



Construction Update

**DAN PYAN, EXECUTIVE DIRECTOR OF FINANCE
AND OPERATIONS**

FEBRUARY 1, 2024

Bond Summary



Question 1 (\$160 million)

Cottage Grove Middle School: Secure front entry/office: \$3.8 million

Lake Middle School: Secure front entry/office: \$3.8 million

Oltman Middle School: Construction of classroom additions and cafeteria expansion: \$25.8 million

Woodbury Middle School: Construction of new secure entry and new bus road and conversion of pool area to classroom space: \$9.2 million

East Ridge: Construction of new classroom addition, cafeteria expansion, expansion of CTE, biomed and STEM spaces: \$35.8 million

Park: Construction of new cafeteria and kitchen, expansion and renovation of CTE, Robotics, STEM, biomed and learning spaces: \$38.6 million

Woodbury High School: Construction of new cafeteria and kitchen, additional science classrooms, expansion and renovation of CTE, STEM, biomed and robotics spaces, and creation of multipurpose learning spaces: \$42.7 million

Question 2 (\$40 million)

Bailey Elementary: Construction of classroom addition and new cafeteria and kitchen: \$8.7 million

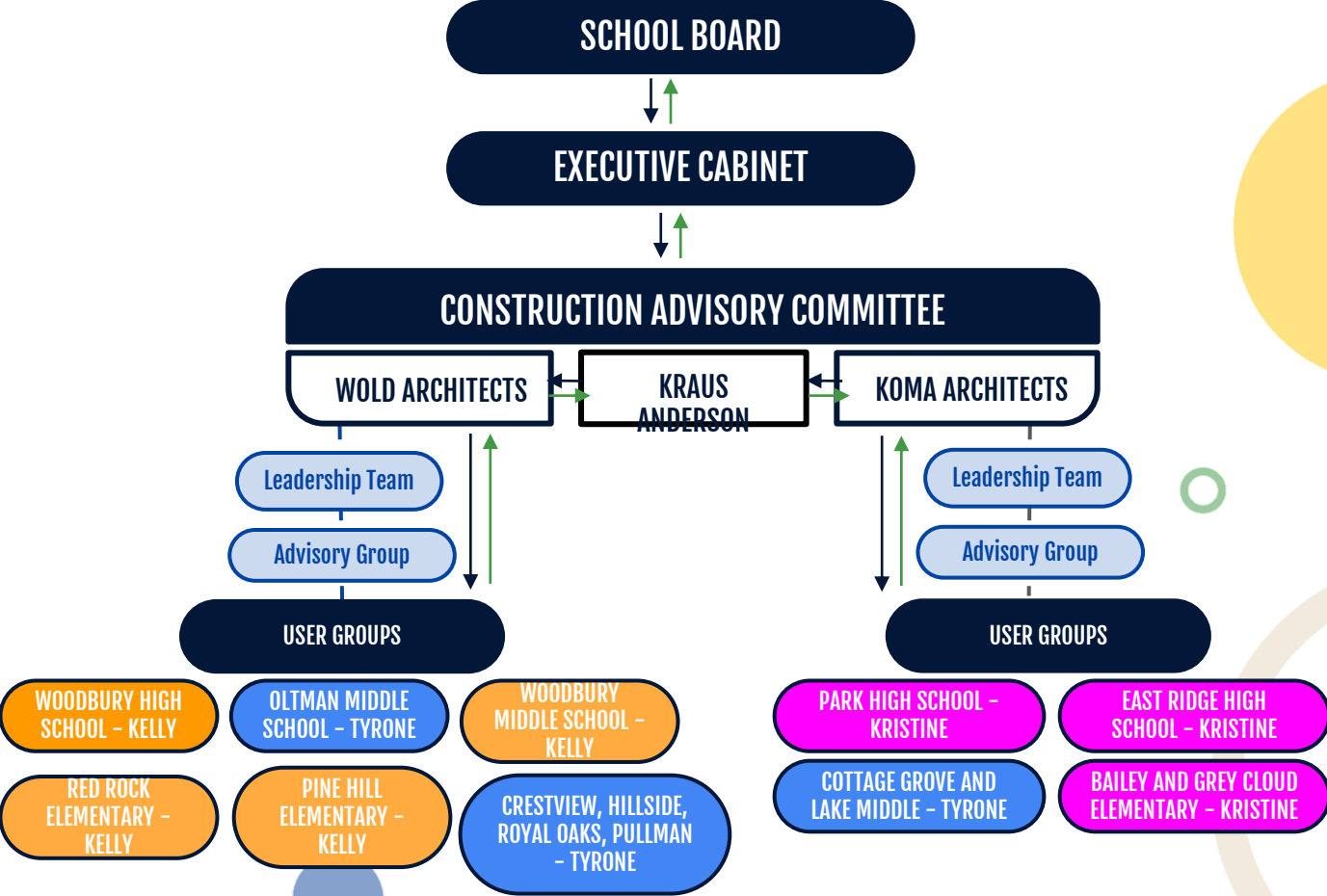
Grey Cloud Elementary: Construction of classroom addition and new cafeteria and kitchen: \$9.4 million

Pine Hill Elementary: New classroom additions, gym space addition and new bathrooms: \$10.9 million

Red Rock Elementary: Construction of new classroom addition: \$4.3 million

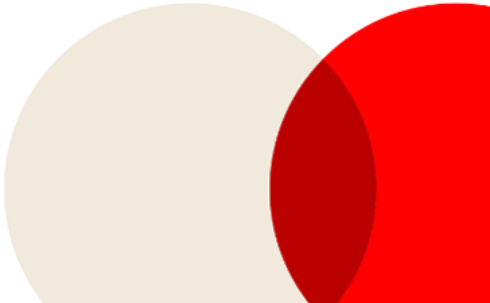
Construction of new bathrooms at Crestview, Hillside, Pullman and Royal Oaks elementary schools: \$6.9 million

Bond 2023 Design Process



A large yellow circle is positioned at the top center of the slide, partially overlapping the title.


Construction Plan Phasing

- Recently began the design and planning process for 15 construction projects across the district.
 - The highest priority items in the bond election will be the first to start the design process – addressing safety and security and overcrowding in our secondary schools.
 - This winter, and continuing for the next year, architects are meeting with groups of staff to gather input, feedback and start the design work for additions and renovations at Cottage Grove, Lake, Oltman and Woodbury middle schools, as well as East Ridge, Park and Woodbury high schools.
 - In January 2025, design and planning work will begin for our elementary school construction projects at Bailey, Crestview, Grey Cloud, Hillside, Pine Hill, Pullman, Red Rock and Royal Oaks elementary schools.
- 
- Two large decorative circles are located in the bottom right corner. One is a light beige circle, and the other is a red circle that overlaps the beige one.



Construction Update


Park High School User Groups

- Kitchen Cafe User Group met to identify and discuss needs within close proximity to the cafeteria
 - Front Entry/Student Services User Group met to identify primary and secondary priorities of locations for services in the front entryway
 - Career and Technical Education User Group met to discuss space needs for Science, Art, Business, Family and Consumer Sciences (FACS) and Robotics
 - Beginning conversations about improving traffic flow
- 



Construction Update


East Ridge High School User Groups

- Classroom addition User Group met to discuss:
 - Functionality of pod layouts
 - Space for science classrooms
 - Space needs for online learners.
 - Career and Technical Education User Group met to discuss space needs for Science, Art, Business, Family and Consumer Sciences (FACS) and Robotics
- 

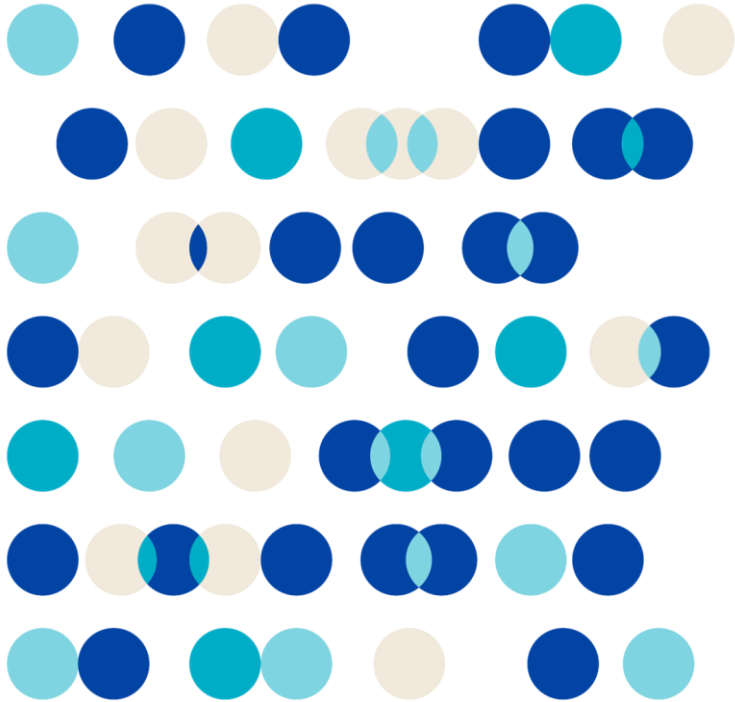


Construction Update

Oltman Middle School User Group

- Oltman Middle School User Group held their first meeting on Jan. 17.
 - Discussed roles of the User Groups
 - Reviewed the scope and schedule for the project
 - Began to identify priorities of the classroom addition:
 - Science
 - Science, Technology, Engineering and Math (STEM)
 - Special Education space
 - Support staff space
 - Discussed kitchen and cafeteria space needs and flow
- 

Construction Update



- Held meetings with Trade and Industry Partners to gather feedback, identify current and upcoming trends in Career and Technical Education (CTE) and to begin discussions about needs and wants for current CTE and Trade and Industry education spaces in our high schools.
- Working to organize virtual tours of contemporary high schools in the area

Construction Update

- Held Construction Standards meetings to create consistency across the district for products used in our buildings.
 - **Safety and Security Construction Standards**
 - Collected feedback about security ideals and norms, safety and security infrastructure and hardware standards
 - **Nutrition Services Construction Standards**
 - Collected feedback from Nutrition Services staff about kitchen equipment standards, plumbing standards and began discussions about layout and flow of serving spaces
 - **Technology Construction Standards**
 - Collected feedback from Technology team to begin to develop instructional technology and infrastructure standards.
 - **Mechanical, Electrical and Plumbing Construction Standards**
 - Collected feedback from maintenance teams, previous engineers and partners
 - **Core, Shell and Finishes Construction Standards**
 - Collected feedback from carpenter and maintenance staff about construction standards for doors, windows, roofing, hardware and flooring.

Swimming Pool Decision



- The swimming pools at Woodbury Middle School and Woodbury High School will be permanently closed after the 2024-25 boys swimming season is complete.
- Working with school administration and coaches to create equitable practice and competition times for the East Ridge High School and Woodbury High School swimming and diving teams at Lake and Oltman middle schools.
- **There will not be any cuts to our swimming programs.** All of our swim teams will have a space to practice and compete.
- There will not be any changes to Park High School swimming and diving.
- Plan is to reopen the Community Pool in St. Paul Park before the Woodbury High School pool is decommissioned.
- The Community Pool will be available to Community Education for swim lessons and to other renters interested in using our district pool space.
- Will monitor the use and cost of maintaining the Community Pool over the next two years, before determining next steps.

Construction Update



- User Group Meetings will begin at Woodbury High School and Woodbury Middle School in February
- User Group Meetings at Cottage Grove Middle School will begin in April
- Site surveys and soil boring drilling is happening at several sites across the district.

For construction updates visit sowashco.org.

Questions?