



January 2024

---

Dear Cielo Families,

Happy New Year and welcome back to Cielo!

January is the month of cold and dark mornings making it difficult for children to get out of bed and get ready for school. We do see an increase in student tardies, so we are asking families to make every effort to get your child to school by **7:25am** before the gates close. Students who arrive after 7:30 will be marked tardy. Our teachers begin instruction promptly at 7:30, and it's important that children don't miss important content.

**School Quality Survey:** On January 10th, the annual **School Quality Survey** will be sent to all Cielo families via email. Or you may follow this link.

<https://survey.k12insight.com/survey1.aspx?k=RQsVTUYPsQWUsPsPsP&data=&lang=0&Uid=752537473>

We greatly appreciate your participation and feedback.

**Registration** for the 24/25 school year opens January 9th. Current Cielo students are automatically enrolled for next year and placed in their next grade level, and fifth grade students are rolled to their middle school (for Cielo students, their registration is rolled over to Aprende).

**Kindergarten:** New students entering kindergarten must complete online registration at:

<https://www.kyrene.org/Page/44101> Students must be 5 years old by September 1 to enroll in kindergarten. If you know someone that might be interested in enrolling their children at Cielo, have them call our office 480-541-2400 and make a reservation to attend one of our school tours!

**Field trips** are exciting events for students. All Cielo students attend at least one field trip each year and these are funded primarily through tax credit donations. So far this year, classes have visited the Phoenix Zoo, the Herberger Theater, Arizona Science Center and Shamrock Farms. The tax credit donations fund the entrance fees along with the cost of transportation using our Kyrene buses.

**Tax Credit:** Arizona residents may contribute money to public schools as a tax credit donation for extra-curricular activities and then deduct that amount directly from their state income taxes through a tax credit. Contributions for 2023 must be postmarked by April 15. Individuals and couples filing jointly may take advantage of this tax credit. A maximum of \$200 can be deducted per individual tax return, or couples filing jointly may deduct up to \$400. Donations can be made online at <https://az-kyrene.intouchrecepting.com/> or by dropping off a check made out to "Kyrene School District-Cielo" to the school. We appreciate your tax credit donations!

**Kyrene Play Day:** Please join us on Saturday, January 20, 2024 from 8:00 a.m. - 12:00 p.m. at Kyrene Centennial Middle School for Kyrene Community Education's signature *PlayDay* event. The lineup includes over 40 booths, activities, food trucks and musical performances to keep the entire family entertained. More information can be found at <https://www.kyrene.org/playday>.

**Coffee Chat w/ Mrs. Kingsland:** Please join us on Friday, Jan. 12th at 7:45 in the staff lounge. We will be sharing information about tax credit donations and have Mr. Lockery, the Director of Finance, will be presenting.

January 15th is Martin Luther King, Jr. Day, so school will be closed.

Warmly,  
Kristin Kingsland  
Principal

*"The mission at Kyrene del Cielo Elementary School is to inspire every child to learn, grow, and achieve."*

---



### Kyrene Positive Parenting - January Presentations

#### Love and Logic for Families

Parents are invited to learn about the Love and Logic approach to parenting, which is built around the science of caring and respectful relationship. An authentic, loving connection between parents and their children forms the foundation of good behavior and healthy decision-making.

#### Presenter:

Larry Kerby

#### Date and Time:

January 11, 2024  
6:00 - 7:00pm

#### Location:

Centennial Middle School -Library  
13808 S. 36th St.  
Phoenix, AZ 85044

[Registration Link](#)

---



## Tax Credit Donations 2023-2024

Tax credit money is donated money to public schools to support extracurricular activities, character education, student consumable health office supplies, and playground equipment.

Here at Cielo, the Site Council Committee makes decisions on how to spend the money. The Site Council Committee has 10 members that consists of parents, teachers, classified staff, community members and administrators. To maintain the expenses below, we need to keep a balance of \$50,000 for each school year.

At Cielo, your tax credit contributions pay for:

- Field Trips
- Assemblies and Author visits
- PBIS incentives and materials
- Junior Coaches
- No Place for Hate Club
- Discovery Room
- Student Council club
- Online book subscriptions i.e. *BookFlix*, *TIME For Kids*
- Online software tools i.e. *PearDeck*, *Starfall*
- Playground equipment

For more information and to donate, visit our Cielo tax credit website:

<https://www.kyrene.org/Page/49332>

Individuals - \$200    Couples - \$400

Any amount is appreciated 😊

Deadline: **April 15, 2024**

-----  
Tax Payer Name: \_\_\_\_\_ Phone No. \_\_\_\_\_

Address: \_\_\_\_\_

Donation Amount: \_\_\_\_\_

---



***Important: Sign up for Text Messages***

*In the event of an emergency, text messages are the fastest and most effective way to communicate information to families. You must opt in to receive text communications! Text “Y” or “yes” to 67587 to begin receiving text messages from our school and Kyrene School District.*

***Families must OPT-IN to Text Message.***

---

Dear Cielo Families,

The mission at Cielo is to inspire every child to learn, grow and achieve. Building strong partnerships between schools and families is crucial for the overall well-being and success of our students.

Please look over the attached PDF document that contains a few friendly reminders from our Kyrene Family Handbook. These are some recent, common and helpful topics for parents and students.

The full handbook is located on the Kyrene website: <https://www.kyrene.org/familyhandbook>

---



# ATTENDANCE MATTERS

Missing a day of school here and there may not seem like much, but absences add up!

**When a student misses 2 days a month..**

They will miss **20 DAYS** a year.

They will miss **30 HOURS** of math over the school year.

They will miss **60 HOURS** of reading & writing over the school year.

They will miss over **1 YEAR** of school by graduation.

**When a student misses 4 days a month..**

They will miss **40 DAYS** a year.

They will miss **60 HOURS** of math over the school year.

They will miss **120 HOURS** of reading & writing over the school year.

They will miss over **2 YEARS** of school by graduation.

## Electronic Devices at School

Please read the information below from our Kyrene Family Handbook regarding students with electronic devices at school. We understand that many students bring cell phones to school and wear smart watches. We are communicating and reminding the students that both cell phones and smart watches need to stay in their backpack during the school day. This school year we have seen an increase in students wearing smart watches and not using them appropriately during the school day, so we are trying to tighten up our procedures and follow the Kyrene School District policy.

## Students and Electronic Devices

Many parents choose to have their child carry a cellular telephone or other electronic devices (such as an Apple watch or Fitbit) as a means of before and/or after school communication and for safety purposes. Electronic devices can be disruptive in an educational environment, but may also be used to enhance instruction. If parents have decided that it's necessary for a child to carry a cell phone or electronic device, parents and students must be aware of the following:

Kyrene School District [Policy 3-401](#) states that the District does not assume responsibility for the loss of, or damage to, personal property. If your child has a cell phone on campus or on the bus and it is damaged or stolen, we will not be able to utilize administrative time to investigate the incident, nor will the District be able to take any financial responsibility for the cell phone or cell phone charges.

Cellular phones must be turned off and kept in backpacks at all times on campus, except for prior to the ringing of the first bell for the start of the instructional day and after the ringing of the last bell for the end of the instructional day.



**Enroll in Arizona's Top Elementary District.**

**Registration for 2024-25 school year begins January 9**

**Kyrene kids are at the top of the class,** consistently outperforming students in peer districts and charter schools.

**Kyrene kids aspire to become leaders, scientists, artists and more,** through a variety of PreK-8 program offerings, from computer science immersion to project-based learning.

**Kyrene kids get a global education** with world languages (Spanish and Mandarin) and an International Baccalaureate Middle Years Programme.

**Make a Plan. Visit Kyrene Online.**

To help with your planning for next year, be sure to visit us online:

- Learn about Kyrene's [Choice Opportunities](#).
- Explore what it means to be a [Kyrene Kid](#).
- Share the vision of a Kyrene student who is [Ready for the Future](#).

**Open Enrollment**

Kyrene School District offers online enrollment for new students and any student applying to change schools. New or transferring students who live outside of a school's boundaries must fill out an application via the online registration portal. Open Enrollment must be approved before registration is considered final.

### **Current Students**

Current families with no school changes and no new students will not need to re-register. Children in grades K-4 and 6-7 will continue to be registered at the same school they currently attend. Current 5th graders will automatically be registered at the middle school assigned to follow their current elementary school.

Families who want to make an enrollment change to a school other than the one assigned are strongly encouraged to submit applications for your preferred school by **January 15**. To make a change, log into your ParentVUE account and select the "change school" option.

For **current families with new students** entering school, online registration will be available through your existing ParentVUE account.

Enrollment links will be made available for the 2024-25 school year at [kyrene.org/enroll](https://kyrene.org/enroll) on January 9. Kyrene looks forward to welcoming your students next year!

---

### **Traffic at North Gate/Back Gate on Knox Rd.**

This message is to inform you that the North Gate/BackGate on our campus near Knox Rd. is intended for students who walk from the neighborhood or ride their bike. This was never intended to be a drop-off or pick-up area for vehicles. We have observed safety concerns with the number of vehicles that are using this area to drop-off and pick-up students.

If you drive your child/children to school, we ask you to please use the school drop-off/pick-up drive through lane in our west parking lot. You can enter this lane on Lakeshore Drive. Please look for the orange cones that mark the lane. We are a very large elementary school and the majority of our students are driven to and from school. This is one of the reasons we had the new construction completed to allow for a longer drive through lane to accommodate the amount of traffic and help the drop-off and pick-up procedures run smoothly.

Thank you for following our procedures and supporting the safety of our students.

---

### ***Kyrene Dress Code Reminder.***

*We want to remind families that Kyrene School District made adjustments to dress code guidelines last year, and we recommend families review current procedures with your students. The guidelines can be found in the Governing Board Policy Manual online, under Procedure [5-302.A Student Attire - Student Dress](#).*

*The guidelines are also available in the Kyrene Family Handbook.*

---



## Dates to Remember:

### January

- 11 Panera Bread Restaurant Night
- 12 Coffee Chat with Mrs. Kingsland - Special Guest Mr. Lockery, Director of Finance
- 16 PTO Board Meeting 2:30pm - 4:30pm
- 26 - Family Dance, 6:00pm - 8:00pm

### February

- 6 - Panda Express Restaurant Night
- 20 - PTO Board Meeting 2:30pm - 4:30pm
- 24 - Spring Carnival, 2:00pm - 5:00pm
- 28 - Rubio's Restaurant Night
- 29 - March 7 - Scholastic Book Fair (lunch time only)

### March

- 26 - PTO Board Meeting 2:30pm - 4:30pm

### April

- 2 - PTO Board Election Social 6:00pm - 8:00pm
- 11 - Raising Cane's Restaurant Night
- 16 - PTO Board Meeting 2:30pm - 4:30pm
- 29 - May 3 BOGO Scholastic Book Fair (lunch time only)

### May

- 6-10 - Teacher Appreciation Week
  - 20 - Yearbook Party at Peter Piper Pizza
  - 21 - PTO Board Meeting 2:30pm - 4:30pm
  - 23 - Jeremiah's
-



**Panera**  
**FUNDRAISING**



*Help support us!*

# KYRENE DEL CIELO PTO

**20%**  
**OF SALES**  
**WILL BE**  
**DONATED**

**January 11, 2024**  
**4:00 pm to 8:00 pm MST**  
**3141 West Frye Rd**

Use code FUND4U at online checkout, in the Panera App,  
or at the kiosk in-cafe.\*

Bring this flyer or show a digital copy to your cashier when ordering at the cafe or enter the  
promo code FUND4U at checkout on Panerabread.com or the Panera App to ensure your  
organization gets a portion of the proceeds.\*\*

Learn more at [fundraising.panerabread.com](http://fundraising.panerabread.com)

©2022 Panera Bread. All Rights Reserved.

\*Gift card and catering order placed on Panerabread.com, and delivery orders placed through third-party sites are excluded and will not count towards the event. Other restrictions apply. For complete details, visit: <http://fundraising.panerabread.com/terms-conditions/>. \*\*Services vary by café.



*Help support us!*

# KYRENE DEL CIELO PTO



**January 11, 2024  
4:00 pm to 8:00 pm MST  
3141 West Frye Rd**

**Use code FUND4U at online checkout, in the Panera App, or at  
the kiosk in-cafe.\***

Bring this flyer or show a digital copy to your cashier when ordering at the cafe or enter the promo code FUND4U at checkout on Panerabread.com or the Panera App to ensure your organization gets a portion of the proceeds.\*\* Learn more at [fundraising.panerabread.com](http://fundraising.panerabread.com)

\*Gift card and catering order placed on Panerabread.com, and delivery orders placed through third-party sites are excluded and will not count towards the event. Other restrictions apply. For complete details, visit: <http://fundraising.panerabread.com/terms-conditions/>. \*\*Services vary by café.

©2022 Panera Bread. All Rights Reserved.



# **Winter Wonderland Family Dance**

**Friday, January 26th**

**6:00 pm - 8:00 pm**

**Come enjoy a night of fun, dancing and hot chocolate!**



**Scan the QR Code to buy \$5  
presale tickets**

**\$7 dollar tickets available at night of event**







### **Student Attendance**

We know from research and experience that regular attendance and being on time to school are two factors that help shape a child's attitude and performance at school. These are also lifelong habits that are important for your child. Therefore, we consider school attendance a very important factor in your children's academic success. Please review the following procedures for school attendance.

### **Absences**

Parents must call the attendance line at 480-541-2401 (24 hour message machine) when your child is absent. We can no longer accept email notifications from parents or messages from teachers. This information must be conveyed via a phone call to our front office staff or a recorded message left on our attendance line. If the school does not hear from you or cannot get in touch with you, your child will be marked unexcused truant until our attendance clerk has made contact with you. For your child's safety, it is important for the school to be notified of an absence. You may check your child's absences and tardies through your ParenVue account.

### **Have You Moved?**

If you have moved, please log in to ParentVue and update your new information. You will also need to upload your new utility bill/lease/mortgage agreement. We also will need families to sign a new State of Arizona Residence form that is located in the front office. We appreciate your assistance with this.

---



**Breakfast:** Breakfast is served in the cafeteria from 7:00-7:20. The kitchen closes at 7:20. Please get your child here early enough if they are getting breakfast.

**Gates:** When the first bell rings at 7:25, students should be getting in line. The gates will close promptly at 7:27. Students who arrive after 7:30 will be marked tardy.

**Parking Lot:** Please drive slowly in our parking lot and drop-off lane. Also, students should not be dropped off in the parking lot. **Safety is our #1 priority!!!**

---

## **National School Lunch Program**

The National School Lunch Program is a program sponsored by the U.S. Department of Agriculture. Through this program, eligible students may be offered free or reduced-price meals. We also participate in the School Breakfast Program at all schools. Meal payments may be made online, as this program operates in all of the schools in the Kyrene School District. Meal application information is distributed and made available to every student in the district at the beginning of the school year. Application information will remain confidential and will be used only to determine eligibility for free or reduced-priced meals. Applications are also available at all school offices or by clicking on the meal application links.

Please visit [Linq Connect](#) to submit an online meal application to our district. You may turn in paper meal applications to any school office. We strongly encourage all families to apply. The free, reduced-price, and paid meal information is used to qualify the school district for other student qualifications and funding. You will receive an eligibility letter via email once your application has been processed that includes the status of your student(s) meal eligibility. If you have a concern regarding the decision of your meal application, please email [kbs@kyrene.org](mailto:kbs@kyrene.org).

## **Payment Options**

- **Online** (Please visit [In-Touch](#) to pay using your credit or debit card).
- **Check** (Please make checks payable to Kyrene School District, checks are accepted at all school sites).
- **Cash** (Please send cash in a sealed envelope labeled for the student. Cash is accepted at all school sites).

## **Online Lunch Payment Instructions**

We offer an optional online payment option via [In-Touch](#) to submit meal account payments. Choose meal account to apply money to your student(s) meal accounts. Payments will be applied to your students meal account at 6:50 AM, 9:35 AM, 11:05 AM, 12:05 PM and at night at 11:35PM daily to update the meal account balance. Balances can be checked at any time by visiting [linqconnect.com](http://linqconnect.com). Negative balance notices will be emailed weekly to parents during the school year. Meal account balance notices are sent on Friday to notify you of the current amount as your student(s) may/or may not spend money to purchase 2nd meals or Al-a-Carte items.

An account needs to be created to view your child's meal balance at [linqconnect.com](http://linqconnect.com). Linq Connect/Titan IT support is available by dialing 1-844-467-4700 (Option 2 Option 1 for assistance).

Contact Maribel Olivas-Smith, NSLP Specialist, for meal account issues by phone at 480-541-1350 or email at [kbs@kyrene.org](mailto:kbs@kyrene.org).

## **Unpaid Meal Policy**

- [Unpaid Meal policy](#)

**SMART SNACKS:** Please contact the SFE office by calling 480-541-1660 or by email for information regarding Smart Snacks and the current list of items.

Email: [foodservice@kyrene.org](mailto:foodservice@kyrene.org).



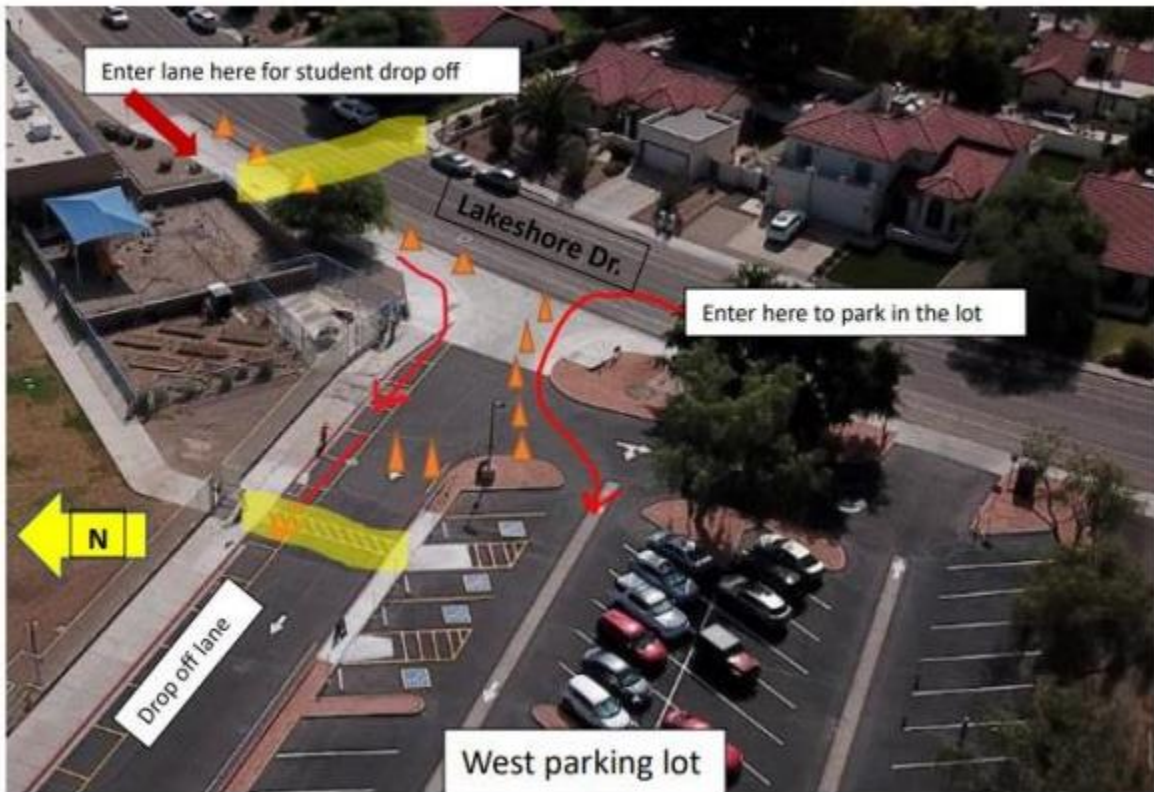
This institution is an equal-opportunity provider.

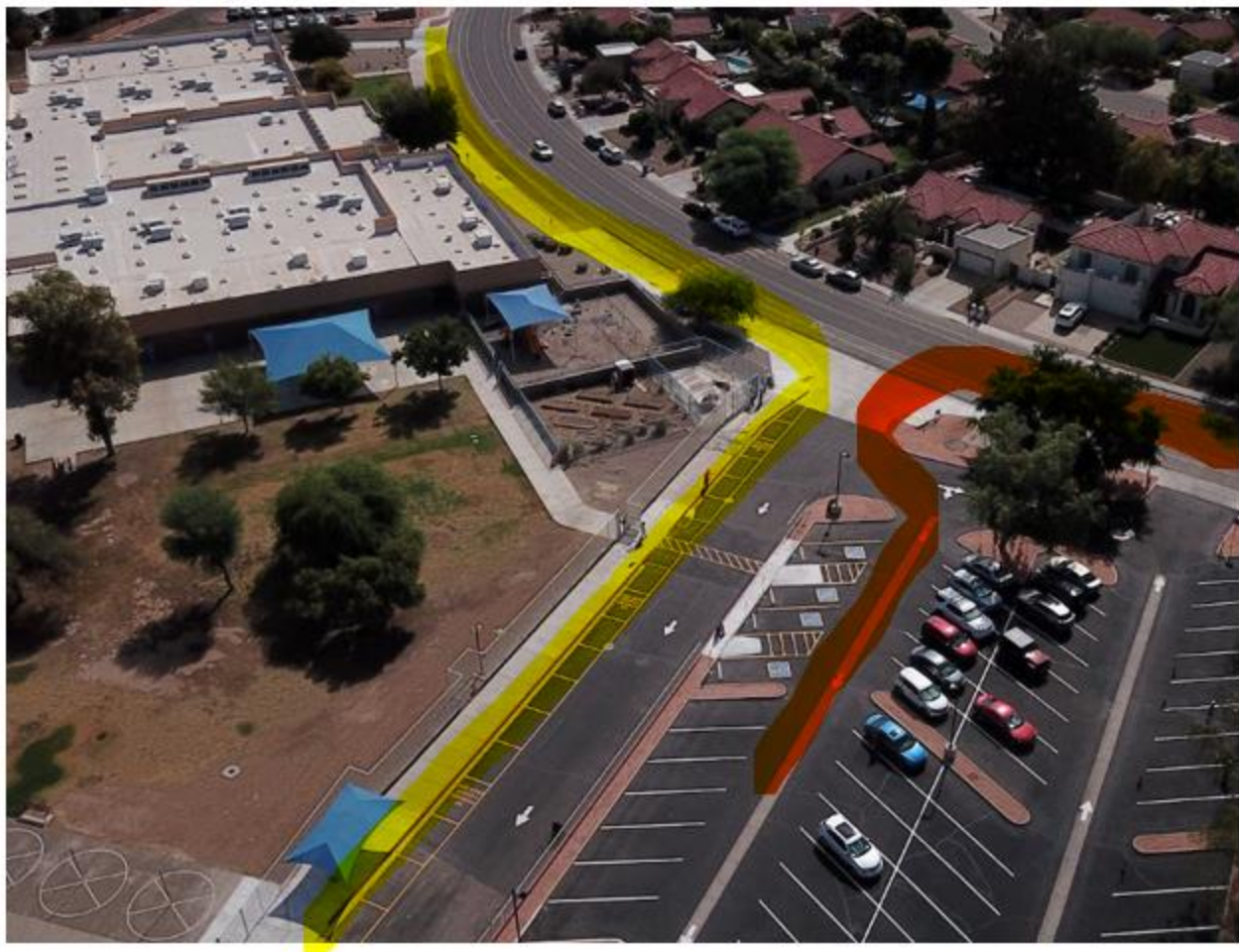
---

## Entrance to Parent Lot

From **McClintock east from Post to Lakeshore** - car lane drop off line, stay in car. Pull all the way up, past crosswalk before letting students out of car (passenger side only)

From **Ray Rd north up Lakeshore** - turn left into parking lot to the car parking lanes, walk students to crosswalk to gates.





## Quick Links

[School Website](#)

[Breakfast/Lunch Menu](#)

[2023-24 Calendar](#)

[2024-25 Calendar](#)

[2025-26 Calendar](#)

[ParentVue](#)

[PTO](#)

## Upcoming Events

### 2024-25

Jan 15: MLK Day, No School

Feb 19: President's Day, No School

Mar 11-22: Spring Break, No School

Mar 25: Teacher Plan, No School

Mar 26: School Resumes



May 22: NO Early Release

May 23: Last Day of School - Early Release Day

# STAY CONNECTED!

Kyrene School District and your child's school want to keep you informed of important news and events.



Kyrene may send text messages in the event of an emergency or for other critical communications, but families must sign up to receive text communications. Text "Y" or "yes" to 67587 to begin receiving text messages from both your child's school and Kyrene School District.



All families are automatically enrolled to receive **email** and **phone calls**. No sign up required!



## ONLINE PAYMENTS

**CONVENIENT AND FAST!**

- Purchase an item
- Pay an athletic or activity fee
- Pay for a lost or damaged library book
- Make a tax credit donation



Kyrene Online Payment Center

Click here to access the [Payment Center](#)

---

Follow us on Facebook: [www.facebook.com/kyrenedelcielo](http://www.facebook.com/kyrenedelcielo)



**Kyrene del Cielo**

@kyrenedelcielo · Elementary School

---

## Contact Us

**Kyrene del Cielo**  
1350 N. Lakeshore Drive  
Chandler, AZ 85226

**Phone:** 480-541-2400  
**Fax:** 480-541-2410  
**Attendance:** 480-541-2401

**School Hours:** 7:30am – 2:15 pm  
*Every Wednesday at 12:15 pm*

**Office Hours:** 7:00 am – 3:30 pm  
*Every Wednesday at 1:30 pm*