

Prom Information

Prom Information

- May 3rd at Avion on the Water from 7-11
- Grand March starts at 5:30 in the PAC.
 - You are required to be here by 5:00 in the MS gym or you could lose your spot
- Breathalyzers will be used at Prom
- Tickets are \$40 a person and will be on sale start March 25th through April 9th during all lunch periods. You can see Mrs. Kubas before or after school if you are not at lunch. You may also email Mrs. Kubas to set up a time to pick up tickets from the office.

Prom Information Continued:

- If you are taking a non-Crestview student to Prom, you will have to fill out a guest verification form for them. They are required to follow all of our rules and it is your job to make sure they know the rules. Forms will be available in the office and on Google Classroom starting March 1st and are due by April 5th.
 - Guests have to be at least a freshman in high school and not older than 21.
- Permission slips will be sent home so your parents/guardians can sign off that they have also read the Prom rules and consequences. These are also due by April 9th.
- You may leave school at 11:04 am on May 3rd as long as you have a permission slip in the office by May 1st. You **MUST** be in morning classes if you have them in order to attend Prom.

After Prom

- After prom will take place at Kalahari on Saturday May 4th.
- There is a \$20 deposit per person for After Prom
- You would need to be at the school between 7:45-8:00 am and will arrive back about 8:00 pm.
- Permission slips will be in the office and be on your class google classrooms starting March 1st. They are due by April 9th.

Overall rules for dresses

- Keep private parts private.
- Slits have to be fingertip length if they are in the front and mid thigh if they are on the side
- Open back dresses cannot show any part of the butt and have to be designed that they have support so they will not fall down
- The neckline cannot be too plunging
- Midriff - you can wear a two piece as long as there is no more than a 1 inch gap between the top and bottom of the dress.

Overall dress rules continued

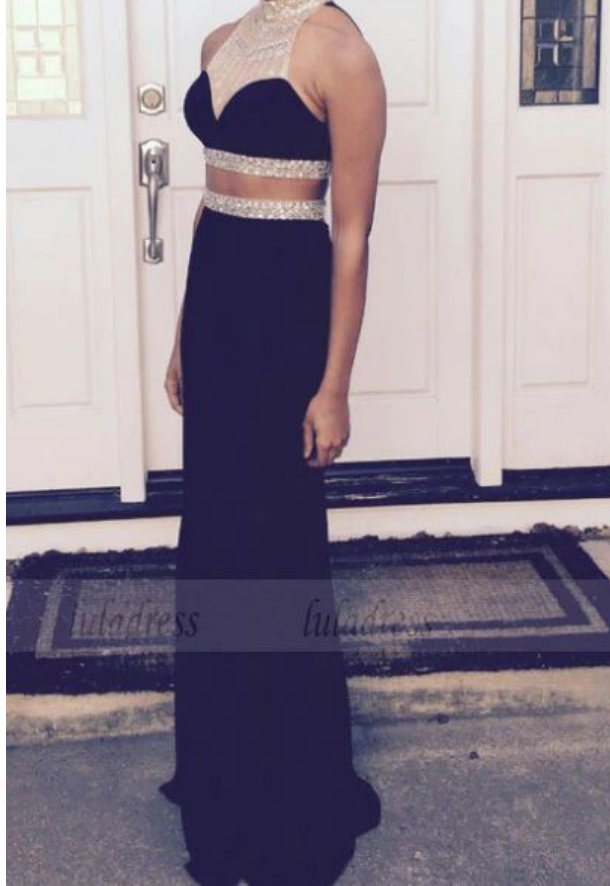
- In terms of mesh:
 - For NUDE colored mesh on the dress - if you remove the mesh and it is not appropriate, then it is not appropriate with nude colored mesh
 - For COLORED mesh - private parts still need covered by OTHER FABRIC
- You will be wearing this outfit and dancing in this outfit in front of many people's parents, other teachers, and Mr. Hill. Try to move in the dress when you buy it to make sure you feel comfortable.



These are all a NO!



These are all a NO!



These are all a YES!

Rules for suits

- Long-sleeve, button down, collared shirts must be worn at Prom.
- Shirts must also stay on at Prom.
- Pants must be worn at Prom.



These are all a NO!



These are all a YES!

Overall Rules

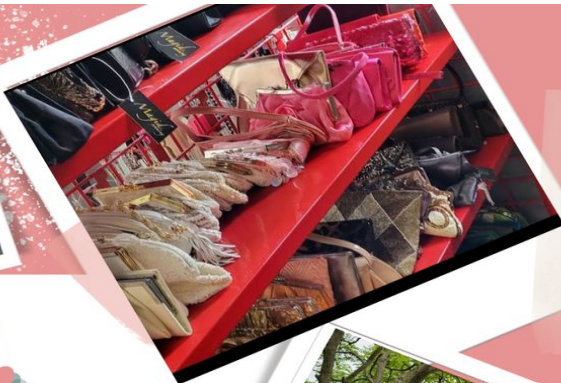
- No sunglasses
- No hats
- No jeans
- Please consider bringing socks or flip flops if you plan on taking your shoes off
- No large bags
- No outside food or drink

Consequences

If we feel you are in an inappropriate outfit at Grand March, you will be required to fix the problem. We will have some solutions to help you, such as giving you a shawl, a cover up, safety pinning the slits, etc.

If we cannot make the outfit appropriate, you will not be permitted to walk and you will have to find a way to make the outfit appropriate before coming to Prom or you will not be allowed to enter Prom.

DIVA Donations



Questions

If you have ANY questions about your outfit (or anything), please direct them to Mrs. Kubas or Mrs. Burnell. We would be happy to check out your outfit before the dance if it makes you feel better but you are not required to show us.