

CLYDE PARK DISTRICT #41

Consolidated with Clyde Park #41: #16 Francis, Cowan, Chadbourne
#22 Sumner
#23 Brackett Creek
#35 Upper Rock Creek, Cole
#50 Middle Rock Creek, Blair,
Pleasant View

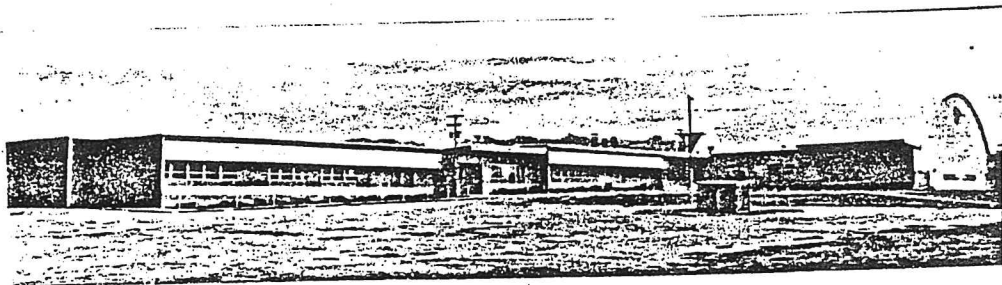
The school building at Clyde Park was built in 1904 at the cost of \$1500. At one time when students out-grew the school facilities, the big house built by Edgar Gibson in 1909, was used as a high school. In 1932 the building added a two-story addition; 22 years later a gym and two more rooms were added. In 1965, a wing was added to house the high school.

In 1989-90 school year the elementary school serves 101 students and the high school has an enrollment of 72. Ed Barich serves as superintendent with trustees Dennis Miller, Thomas Sarrazan, and Robert Queen. Lois Bailey serves as clerk of the district.

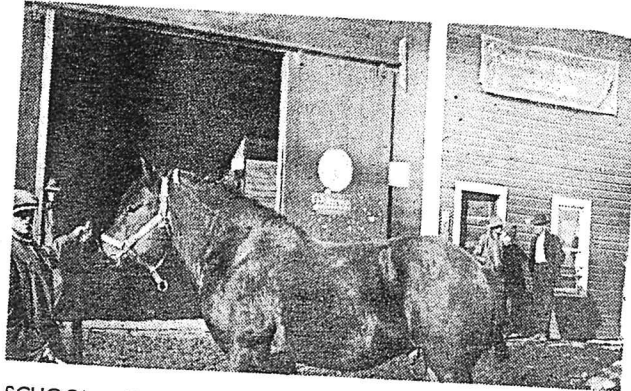
The voters of this district along with Wilsall School District #53 passed a resolution to consolidate into Shields Valley District J12 as of July 1, 1990.



One-room School, Clyde Park, 1907 L to R: Mrs. Nance, Alice Hunter, Paul Wright (visitors) Back: Florence Mize, Leila Nance, Hedwig Uhl, Faith Beckman, Ethel Gideon, Louie Bailey, Clyde Beckman, Millard Gideon, Henry Uhl, ? Bailey, Gorm Miller, Ray Beckman, Meg Terry, Beckman Front: Otto Egeler, Clyde Hurseler, Mary Uhl, Mora O'Leary, Alma Beckman, Deborah Miller, Lillie Miller, Minnie Ellen Marquis, Avis Body, Floyd Bailey, Elmer Beckman, Teacher — Nina Johnson

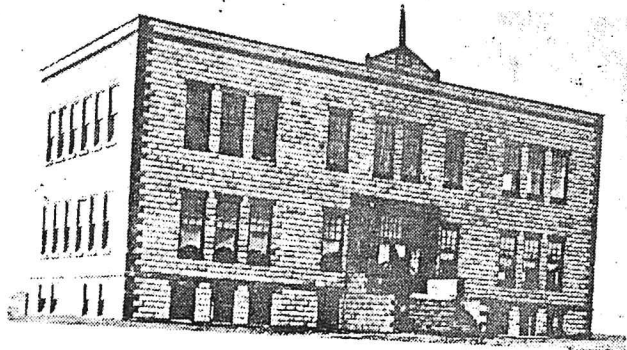


Clyde Park School, 1984



MAMMOTH RED BARN — This livery stable was owned at different times by Gilbert Bros. and by Jim McClarty (later a sheriff in Park Co.). The latter's son-in-law, Jack Haley, operated it at the time of this picture and here advertised Polarine Superior Gasoline, a Conoco product. Demand for kerosene was greater than that for gasoline.

SCHOOL — (1) On April 5, 1913 voters unanimously approved bonds for this building constructed by Carl Yost of the cement blocks that he made himself. In 1919 Wilsall's High School graduated its first class—Mildred Renshaw (Sherwood), Harris Loe, and Bill and Ted Cogswell—and has had a graduating class ever since. School in Wilsall was first held in the Record Building with Mr. Stevens and George Devendorf as teachers. Seats for upper grades faced one way, and for lower grades the other, with a teacher in each end of the room. (2) This log gym, built about 1936 by W.P.A. labor, replaced the one constructed in '17 by Bob Lucas and H. F. Brink. The school now has active football, basketball and track teams, and competition with Clyde Park is keen. Through Bernice Blinn's efforts, the school has six vocal groups and two bands. There are now 50 high school and 106 elementary students served by 12 teachers.



STREETS & HOMES — Principal west-east street is Clark with Lewis and Sacajawea to left and Shields and Shelhamer to right (south). North-south road in right foreground is Hannahford, then Hill, Elliot (Highway 89) and Cooper. To far right were homes of R. W. Lucas and H. F. Brink. On south side along Clark is W. D. Hutchinson's res., Methodist Church, Keyes', Frank Bohart's and Garage. North side of Clark—2 Liquin homes, Denman's, Koldenburg's, Strickland's, McClarty's, Fire Hall. Elevators (l. to r.) Liquin, Farmers Exchange, Gier.

Consolidated with District #53: #15 Rock Creek, Elk Creek
 #31 Cottonwood
 #32 Murphy, Porcupine
 #37 Meyersburg
 #48 Kilorn, Horse Creek
 #62 Antelope
 #68 Green
 #69 Pepper

In 1914, there was no school building. The primary grades were held in the Bruckert Hotel. The teacher was Bessie Brainard. The upper grades were held in the Congregational Church. Etta Brainard was the instructor. In the fall of 1914, the upper grades were moved from the church building to the I.O.O.F. Hall above the Egge Garage, now the Bates Garage. The new school house was near completion though, and was occupied in 1915.

Trustees wanted to start a high school but there were only two students for the freshman class, Ernest Johns and Bill Cogswell. As a result, the students in the 7th grade were given the 8th grade required tests, and students that passed the test were then in the freshman class. The class included Mildred Renshaw, Harris Loe, Bill and Ted Cogswell. The first school superintendent was Earl Speaker.

In 1935, the cement block school building was so damaged by an earthquake, that the upper floor was removed and a two-story, ten room addition was added.

During the 1989-90 school term, the elementary school serves 98 students and the high school has 36. Garret Franks is superintendent with trustees Jacqueline Bright, Ron Arthun and Dwight Pulis, and Anita Lund, clerk. This district has voted to consolidate with the Clyde Park district to form Shields Valley District J12 and High School #5 as of July, 1990. Garret Franks will serve as superintendent of the consolidated district.



0135 Public School, Wilsall, Mont.