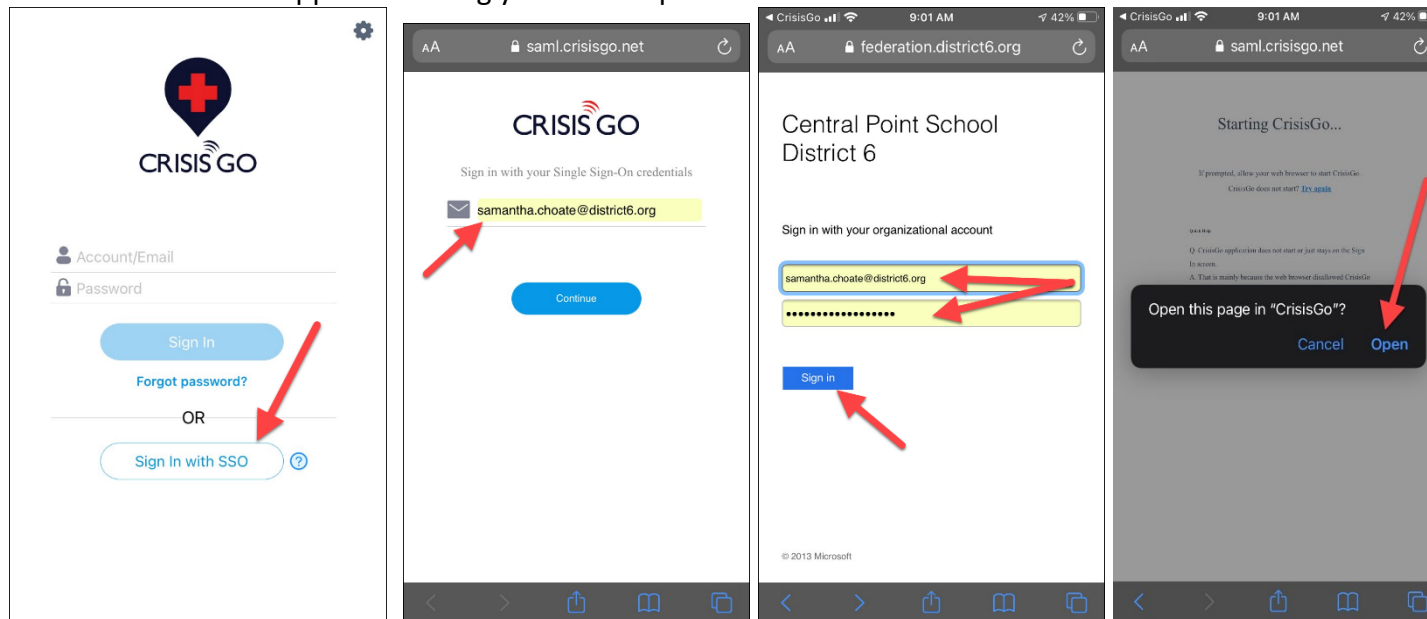


## Here are the instructions on signing into Crisis Go

Via the app

1. Download the app
2. Tap sign in with SSO
3. Input full email address with @district6.org
4. Input full email address with @district6.org again and your district password
5. Tap open
6. The Crisis Go app will now log you in and open

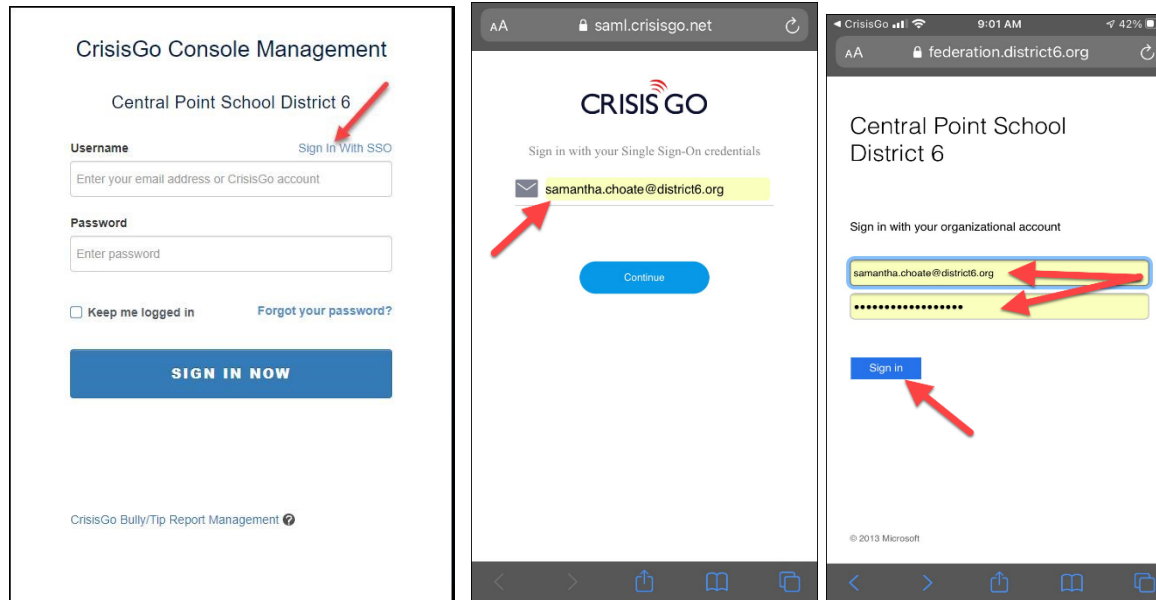


If you follow those instructions and encounter an error will you take a screenshot or let me know the error that you see please.

NEXT PAGE browser sign on instructions

## Via Browser

1. Download the app
2. Tap sign in with SSO
3. Input full email address with @district6.org
4. Input full email address with @district6.org again and your district password
5. Tap open
6. The Crisis Go app will now log you in and open



If you follow those instructions and encounter an error will you take a screenshot or let me know the error that you see please.