

DEVELOPING YOUR HIGH SCHOOL PLAN AND COURSE SELECTION FOR 2024-25



Your LHS Counseling Team



Mrs. Becca Williams
Last names A-Cr



Mrs. Andrea Homruth
Last names Cu-Jam



Mr. Dylan Kochta
Last names Jan-Mi



Mr. Bobby Hinnenkamp
Last names Mo-Set

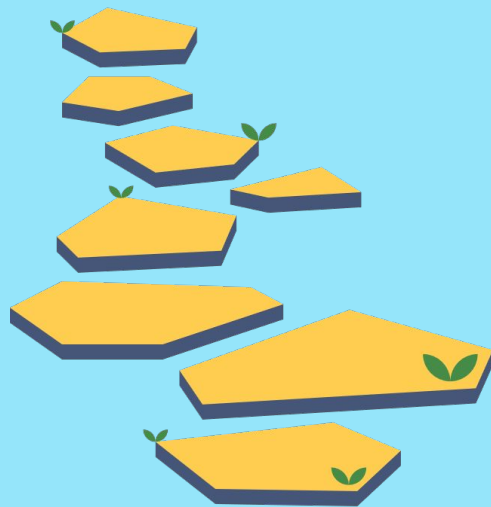


Ms. Angelia Nivens
Last names Seu-Z

Visit our [Counseling website](#) via the LHS website

CHOOSING CLASSES

- There are many classes and programs available.
- Identify your strengths and areas of interest in school and for post high school.
- What is your goal for after high school?
- Do what is right for you.
- Refer back to your Graduation Plan in Skyward or using your Grad Progress Report.



LHS STEAM Program

- **STEAM** integrates traditional STEM (Science, Technology, Engineering and Math) skills with the arts.
- Learn to: Solve novel problems of the future.
- Design, investigate, reason, think and collaborate.



Pathways in:
Environmental Science
Advanced Manufacturing
Computer Science &
Engineering
Health Sciences

COLLEGE CREDIT IN HIGH SCHOOL

Many classes offer the potential for college credit by simply doing well.

- College in the High School classes
- Dual credit Career and Tech classes
- Many Advanced Placement courses



CAREER AND TECHNICAL CLASSES AND COLLEGE CREDIT

Some of our CTE Dual Credit Classes offered at LHS:



MICROSOFT IT ACADEMY MARKETING

ASL CHEF PHOTOGRAPHY

HORTICULTURE SPORTS MEDICINE BIOTECHNOLOGY

INTRO TO ENG DESIGN

WHEN YOU TAKE ONE OF THESE CLASSES, YOUR TEACHER WILL HELP YOU SIGN UP FOR COLLEGE CREDIT

INTRADISTRICT CLASSES - 2 PERIOD BLOCKS

Aerospace Manufacturing & Applied Engineering - at LHS

Architectural Design/CAD - at EWHS

Automotive Technology - at MDH

Carpentry and Construction - at MTHS

Healthcare Professions - at MDH

INTRADISTRICT INFO



COLLEGE IN THE HIGH SCHOOL COURSES

ASL, SPANISH, FRENCH

ETHNIC STUDIES

AP WORLD HISTORY

US HISTORY

PRE-CALCULUS

FINANCIAL ALGEBRA

AP BIOLOGY, PHYSICS AND AP PHYSICS



WHEN YOU TAKE ONE OF THESE CLASSES, YOUR TEACHER WILL HELP YOU SIGN UP FOR COLLEGE CREDIT.

ADVANCED PLACEMENT COURSES

- Challenging college-level classes prepare you for exams at the end of the year.
- Students are not allowed to drop these classes unless extreme circumstance.
- Doing well (3 or higher) on exams can result in college credit or advanced standing once you enroll in college after high school.
- Significant tuition savings.



AP COURSES AT LHS

- Art Studio: 2-D Design (AP Photography)
- AP 3-D Art
- AP English: English Language and Composition(11th), English Literature and Composition(12th)
- AP History: World History (10th), US History(11th), US Government and Politics
- Math and Computer Science: Calculus AB and BC, Statistics, Computer Science
- Sciences: Biology, Physics and Environmental Science



PLANNING ON TAKING CLASSES THROUGH RUNNING START?

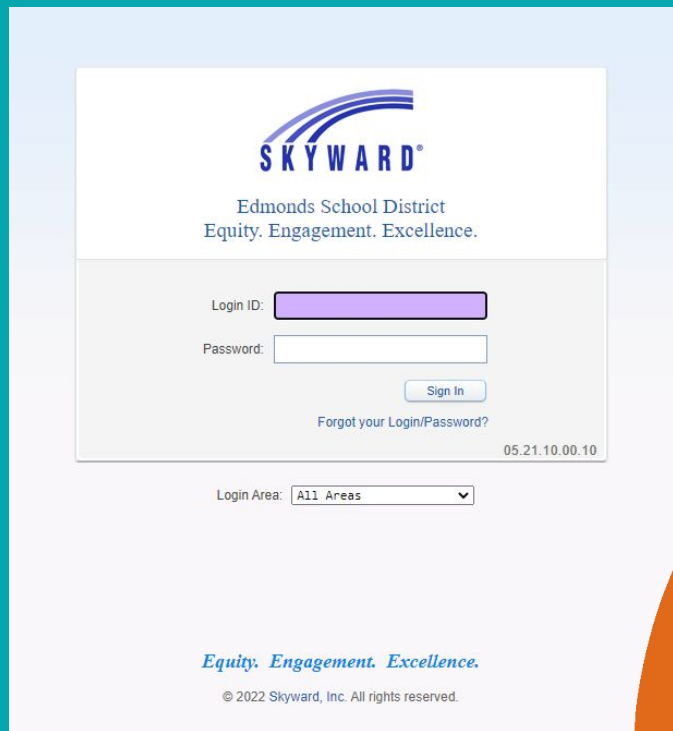
- Running Start is for independent, self-disciplined 11th and 12th graders.
- Learn more by visiting the Running Start websites on each community college's website.
<https://www.edmonds.edu/highschool/runningstart/>
- APRIL 11th, Running Start Information Night on Zoom- more to follow
- Minimum high school GPA of 2.5 or SBA score of 3 in ELA or Math
- Treated as adults at the college. You provide your own transportation.
- The program pays tuition, families pay for fees and books; some programs are available to help
- Grades earned at college are for a lifetime, can affect ability to qualify for financial aid after graduating. Must maintain a "C" or 2.0 GPA.

New RS students - for now sign up for a full load of classes at LHS. Enter **RSA000** as a course request in Skyward during registration.

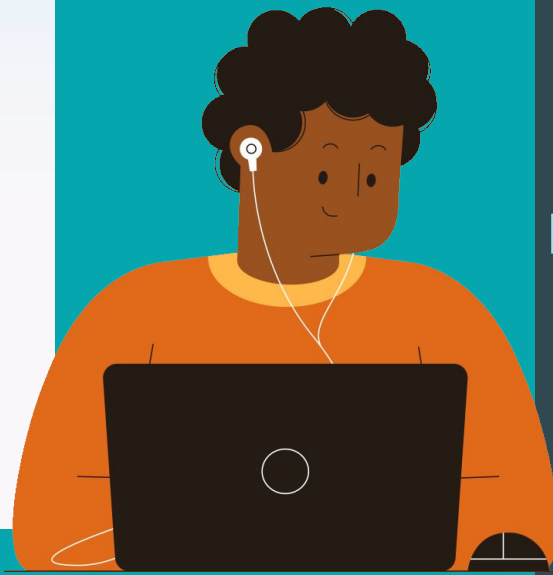
Current RS students, enter **RSA 000** and sign up for ONLY the classes you want to take at LHS.



HOW TO ENTER YOUR CLASS REQUESTS IN SKYWARD



The screenshot shows the Skyward login interface. At the top is the Skyward logo, a stylized rainbow arching over the word 'SKYWARD®'. Below the logo is the text 'Edmonds School District' and 'Equity. Engagement. Excellence.'. The login section contains a 'Login ID:' label with a purple input field, a 'Password:' label with a white input field, and a 'Sign In' button. Below the password field is a link for 'Forgot your Login/Password?'. At the bottom right of the login section is the IP address '05.21.10.00.10'. Below the login section is a 'Login Area:' label with a dropdown menu currently set to 'All Areas'. At the bottom of the page is the text 'Equity. Engagement. Excellence.' and '© 2022 Skyward, Inc. All rights reserved.'



March 11th-14th you will input your course requests in your English class on your Chromebook.

Have your fully-charged computer and your Registration Form ready that day.

QUESTIONS ABOUT REGISTRATION?

**COUNSELORS WILL BE IN THE
AGORA MARCH 6-8TH
DURING LUNCH TO ANSWER
QUESTIONS!**



PLAN CAREFULLY!
**WE USE YOUR REQUESTS TO PLAN
CLASSES. WE CANNOT ACCOMMODATE
PREFERENCE CHANGES ONCE THE
SCHEDULE IS SET.**

QUESTIONS TO THINK ABOUT WHILE REGISTERING...

- **What credits do you need to satisfy toward graduation?**
- **What are your strengths?**
- **What courses/programs might help you further develop these strengths?**
- **What courses/programs might help you improve your weaknesses?**
- **What programs do you want to know more about?**
- **What courses will get you to where you want to go after high school?**