

TODAY WE WILL

GO OVER GRAD REQUIREMENTS &
COLLEGE ENTRANCE REQUIREMENTS

REVIEW
GRADUATION
REQS AND
COLLEGE
ADMISSIONS
REQUIREMENTS

REVIEW YOUR
GRAD REQS
AND LOOK AT
WHAT YOU
STILL NEED TO
TAKE

START YOUR
PLAN FOR NEXT
YEAR

Coming later
THIS week. . . .

Lesson 2:
Programs and
your high school
plan



Your LHS Counseling Team



Mrs. Becca Williams
Last names A-Cr



Mrs. Andrea Homruth
Last names Cu-Jam



Mr. Dylan Kochta
Last names Jan-Mi



Mr. Bobby Hinnenkamp
Last names Mo-Set



Ms. Angelia Nivens
Last names Seu-Z

Visit our [Counseling website](#) via the LHS website

Graduation Requirements

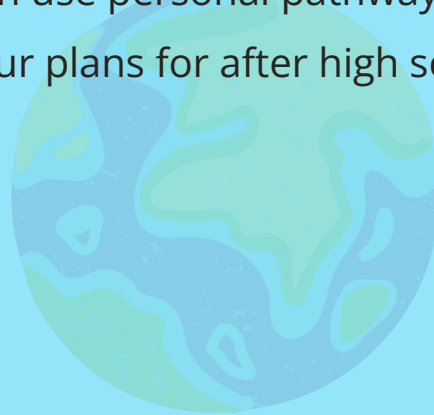
ART

Graduation requirement:
1.0 Credit



WORLD LANGUAGES

Required for 4 year college admissions.
Can use personal pathway of courses suited to
your plans for after high school, if not applying
to a 4 year college. .



Graduation Requirements

ENGLISH

Graduation requirement

4.0 credits

SOCIAL STUDIES

Graduation requirement:

3.5 credits

WA State History requirement can be
met in US History, AP US History
or in Middle School



Graduation Requirements

Math

Graduation requirements:

3.0 credits

- Algebra 1
- Geometry
- 3rd Yr. Math: Financial Algebra, Algebra 2, or Algebra 2 Honors

Students with IEP plans will meet with their case managers and follow their path established with their case managers.

Graduation Requirements

SCIENCE

Graduation requirement

3.0 credits

CAREER & TECH ED

Graduation requirement:

1.5 credits

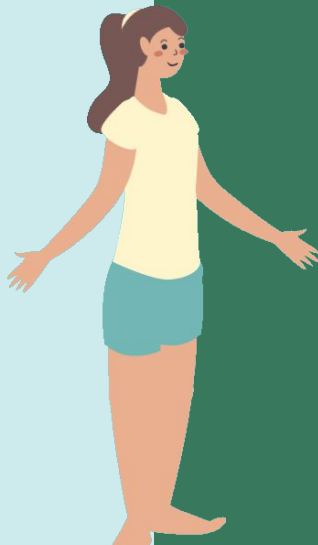
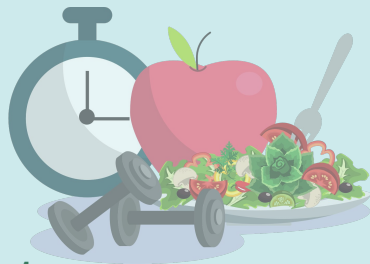


Graduation Requirements

HEALTH

Graduation requirement:

0.5 credit



PE

Graduation requirement:

1.5 credits

Graduation Requirements

PERSONAL FINANCE

Graduation requirement:

.5 credit

- Take in 12th grade
- Accounting 1 or Financial Algebra are equivalencies

GENERAL ELECTIVES

Graduation requirement:

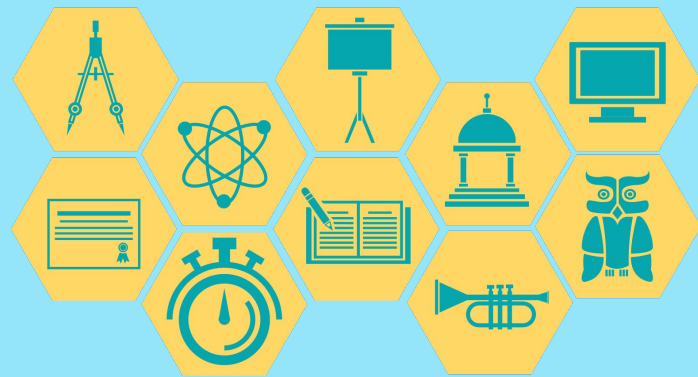
5.5 credits

General Electives also include any math, science or world language/ASL that you take above what is required to graduate.



If you want to go to a 4 Year College or University You Need:

- Consecutive 2 years/credits of one world language or ASL
- World Language test credits are also accepted (up to 4)
- Take math or a math-based science class senior year



WHAT ELSE DO I HAVE TO DO TO GRADUATE?

1. Complete High School and Beyond Plan (HSBP) in Naviance

2. Pass State Tests - SBA English, Math, take Science

-OR-

Pass 2.0 credits in one CTE Pathway

-OR-

Pass college level English and math classes
(CHS or Running Start)

-OR-

Take/pass Bridge to College English and Math

-OR-

Take/pass AP English/Math and/or
earn passing grade on AP Tests

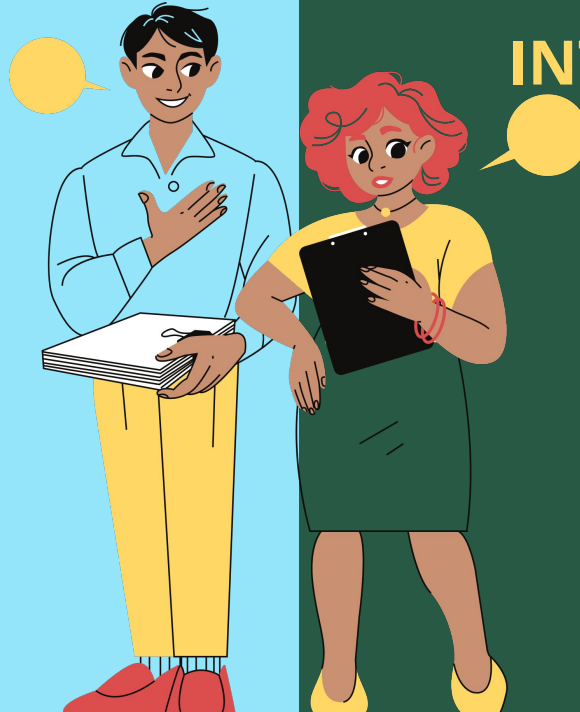


GRADUATION CTE PATHWAYS

2.0 CREDITS IN ONE PROGRAM

PATHWAYS AT LHS

ASL/Sign Language Interpreter
Business, Marketing, and IT
Comp. Science and Engineering
Culinary Arts
Education and Human Services
Healthcare Professions (1.0)
Horticulture
Sports Medicine, Biotechnology
Visual Communications



PATHWAYS THROUGH INTRADISTRICT CLASSES

Aerospace Manufacturing
Architectural Design/CAD
Automotive Technology
Carpentry and Construction
Healthcare Professions (1.0)

ALL SNO-ISLE PROGRAMS

[Career and Technical Pathways Home](#)

WHAT DO I DO NOW?

Using the supplied worksheet and the Grad Progress Report, review your Graduation Requirements to figure out what classes you need to take next year.

It is your responsibility to make sure you are meeting all graduation requirements!

Refer back to these requirements as you go through the registration process.



If you lose your Grad Progress Report

Where to
find this
in
Skyward

The image shows a web browser window displaying the Skyward login page for Edmonds School District. The page has a white header with the Skyward logo (a blue arc above the word "SKYWARD" in blue) and the district's name and motto: "Edmonds School District" and "Equity. Engagement. Excellence." Below the header is a light gray login area. It contains two input fields: "Login ID:" with a purple placeholder and "Password:" with a white placeholder. To the right of the password field is a blue "Sign In" button. Below the button is a link that says "Forgot your Login/Password?". In the bottom right corner of the login area is the date "05.21.10.00.11". At the bottom of the page is a "Login Area:" label followed by a dropdown menu currently set to "All Areas" with a downward arrow.

LYNNWOOD HIGH SCHOOL - 485

SKYWARD

STUDENT ACCESS

Student Access

LYNNWOOD HIGH SCHOOL (12/13/2023)
2023-2024

Academic History


Activities

Assignments

Graduation Plan

Portfolio

Schedule



Click on "Graduation Plan"



HOW TO READ THE GRADUATION REQUIREMENTS SCREEN

1. "In progress" = classes you are in now
2. "Remaining" = what you still need
3. If "In Progress" and "Remaining" are the same amount = currently taking all you need
4. Once you pass "in progress" classes, the credits move to "Completed" column
5. If a class is remaining, and not in progress - you need to take/pass this course to graduate

DISREGARD THE "FUTURE CREDITS" COLUMN



ON TRACK TO GRADUATE?

You should have...

3

Credits Earned
9th Graders

9

Credits Earned
10th Graders

15

Credits Earned
11th Graders

If you have not earned these credits, please contact your counselor to talk about what credit retrieval options will be best for you.

REGISTRATION TIMELINE

1. GRADUATION REQUIREMENT LESSON - WHAT CLASSES/CREDITS DO YOU NEED TO GRADUATE? - Today's lesson!

2. LESSON ON HIGH SCHOOL PROGRAMS

- MARCH 7th IN ADVISORY

3. REGISTRATION INPUT IN ENGLISH CLASSES

- MARCH 11TH - CURRENT 11TH GRADERS
- MARCH 12TH - CURRENT 10TH GRADERS
- MARCH 13TH - CURRENT 9TH GRADERS
- MARCH 14TH - MLL STUDENTS

**IF STUDENTS DO NOT INPUT
THEIR REQUESTS BY 3PM
MARCH 18TH , YOUR
COUNSELOR WILL
DEVELOP A SCHEDULE FOR
YOU BASED ON YOUR
GRADUATION
REQUIREMENTS AND CAN
NOT BE CHANGED.**

**COUNSELORS WILL BE AT ALL
LUNCHEES MARCH 6th, 7th, and
8th TO ANSWER
QUESTIONS-COME VISIT US!**

