

Whole Note  
4 beats



Quarter Note  
1 beat

**Music  
Memory**

**Music  
Memory**

**Music  
Memory**

**Music  
Memory**



Half Note  
2 beats



Eighth Note  
1/2 beat

**Music  
Memory**

**Music  
Memory**

**Music  
Memory**

**Music  
Memory**



Half Rest  
2 silent beats



Eighth Rest  
1/2 silent beat

**Music  
Memory**

**Music  
Memory**

**Music  
Memory**

**Music  
Memory**



Whole Rest  
4 silent beats



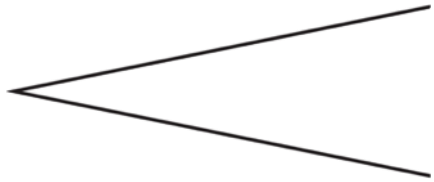
Quarter Rest  
1 silent beat

**Music  
Memory**

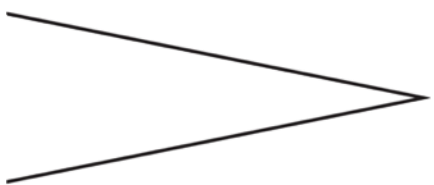
**Music  
Memory**

**Music  
Memory**

**Music  
Memory**



**Crescendo**  
**Gradually getting**  
**louder**



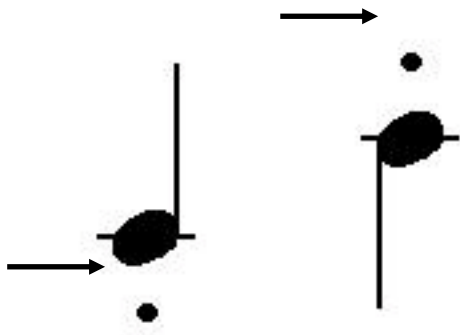
**Decrescendo**  
**Gradually getting**  
**softer**

Music  
Memory

Music  
Memory

Music  
Memory

Music  
Memory



Staccato  
Detached and  
separated



Legato  
Smooth and  
connected

Music  
Memory

Music  
Memory

Music  
Memory

Music  
Memory



## Tempo

How fast or slow  
to perform a piece



## Fermata

Hold indefinitely  
(until the  
conductor says  
stop)

Music  
Memory

Music  
Memory

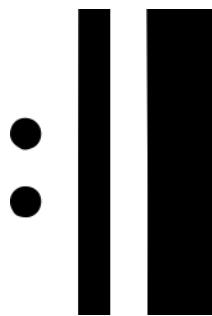
Music  
Memory

Music  
Memory



## Segno

Indicates a place  
in the music to  
return to when  
seeing D.S. al  
segno



Repeat Sign  
Repeat section  
once

Music  
Memory

Music  
Memory

Music  
Memory

Music  
Memory



Time Signature  
How many beats  
per  
measure/which  
note gets the beat



Key Signature  
Tells which notes  
to play sharp or  
flat

Music  
Memory

Music  
Memory

Music  
Memory

Music  
Memory

*f*

Forte  
Perform loudly

*p*

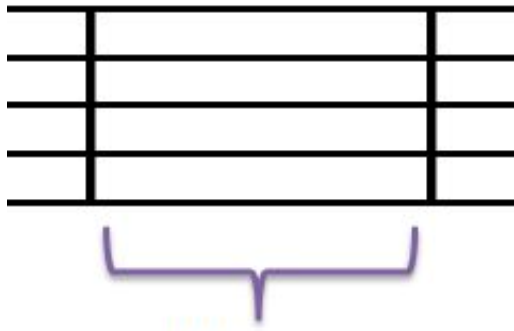
Piano  
Perform softly

Music  
Memory

Music  
Memory

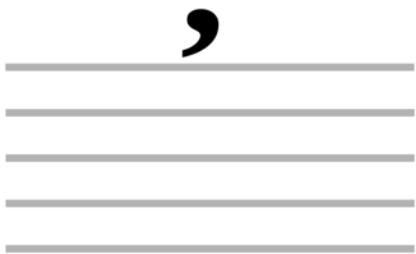
Music  
Memory

Music  
Memory



## Measure

Section of music  
between barlines



## Breath Mark

Collective breath

Music  
Memory

Music  
Memory

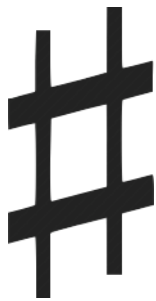
Music  
Memory

Music  
Memory

The flat symbol, a lowercase letter 'b' with a vertical stem and a curved bottom.

Flat

Lowers the note  
1/2 step

The sharp symbol, a hash mark consisting of two parallel horizontal lines and two parallel vertical lines.

Sharp

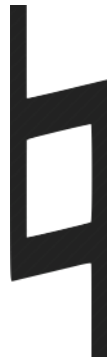
Raises the note  
1/2 step

Music  
Memory

Music  
Memory

Music  
Memory

Music  
Memory



Natural  
Cancels a sharp  
or flat

A musical score for the song "Happy Birth Day" in 3/4 time, featuring four vocal parts: Soprano, Alto, Tenor, and Bass. The tempo is marked as ♩ = 85. The lyrics are "Hap-py birth - day". A large black oval is drawn around the first two notes of each vocal line, with an arrow pointing to it from the left. This oval highlights the voicing or voice part for the first measure of the piece.

Voicing/Voice  
Part  
Notes will be  
performed within  
a specific range

Music  
Memory

Music  
Memory

Music  
Memory

Music  
Memory



Treble Clef



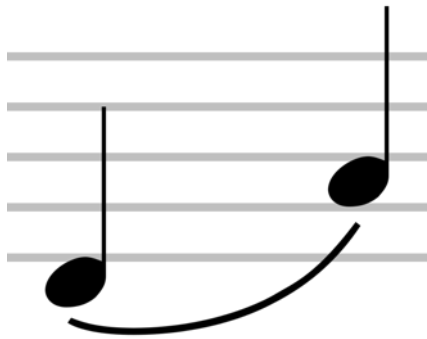
Bass Clef

Music  
Memory

Music  
Memory

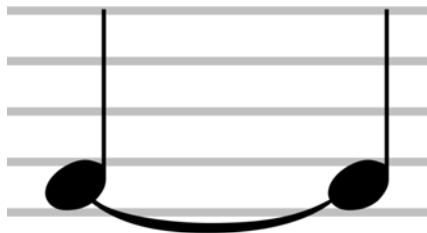
Music  
Memory

Music  
Memory



## Slur

Notes sung or  
played  
connectedly



## Tie

Adds the values  
of two of the  
same note

Music  
Memory

Music  
Memory

Music  
Memory

Music  
Memory