


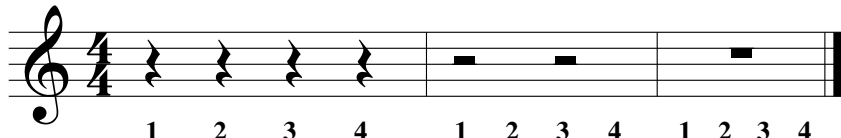


Lesson 7: Basic Rhythm - Rests and Stems

The duration of musical silence is indicated by different types of rests.

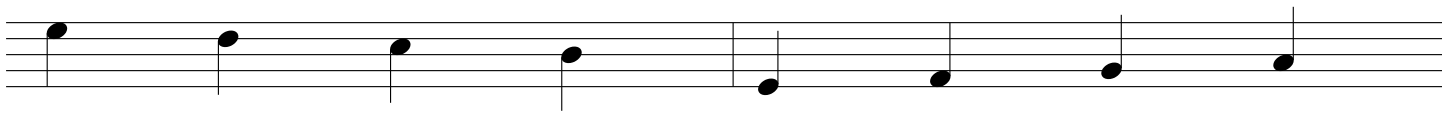
quarter rest 1 beat 	half rest 2 beats 	whole rest 4 beats 
--	--	---



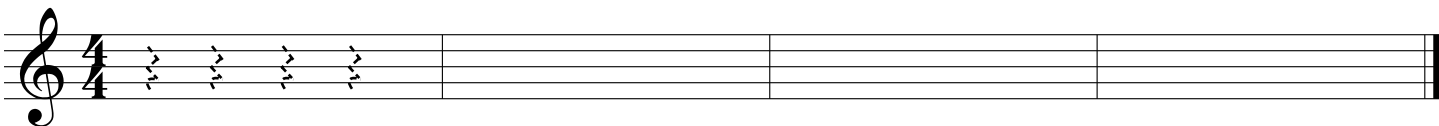
There are rules to follow when drawing **stems** on half notes and quarter notes.

If the notes are on or above the third line, the stems for half notes and quarter notes are drawn downward on the left side of the notehead.

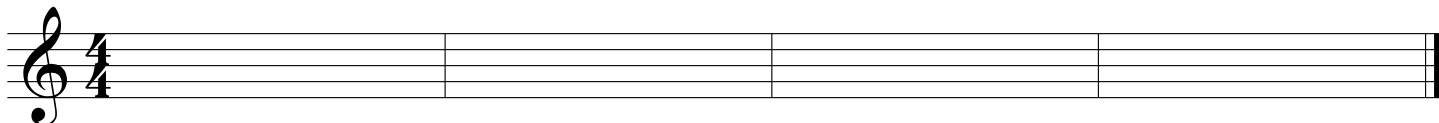
If the notes are below the middle line, the stems are drawn upward on the right side of the notehead.




1. Practice drawing quarter rests by tracing over the dotted lines. Draw four quarter rests in each blank measure.



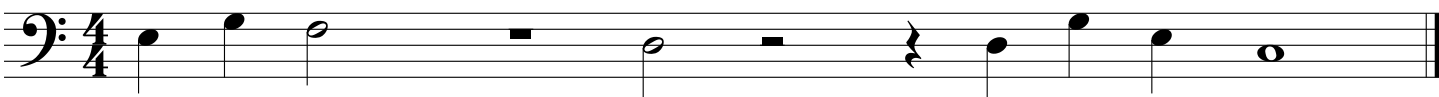
2. Draw two half rests in each of the first 2 measures. Then draw one whole rest in each of the last 2 measures.



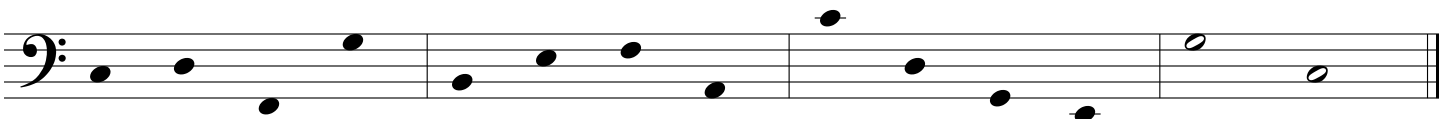
3. Write the count below the rests.



4. Write the count below the notes and rests, then add the missing bar lines.



5. Draw the appropriate stems on the following noteheads.



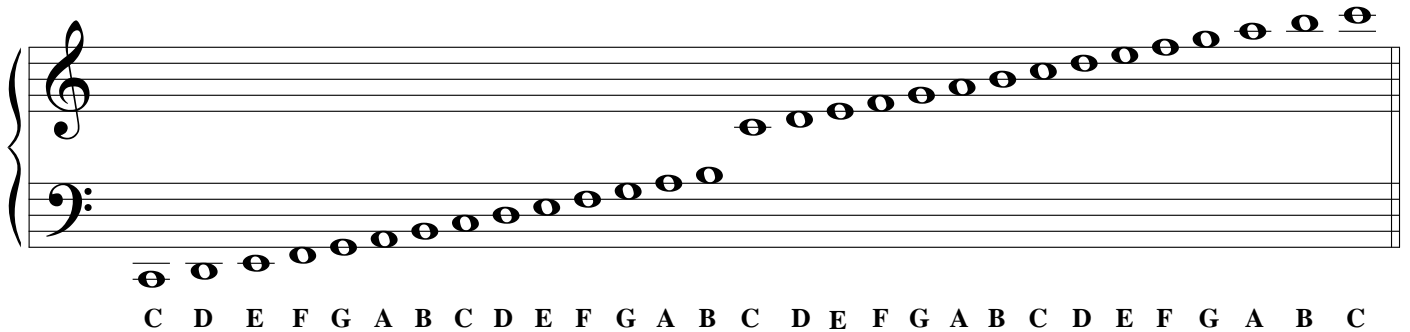
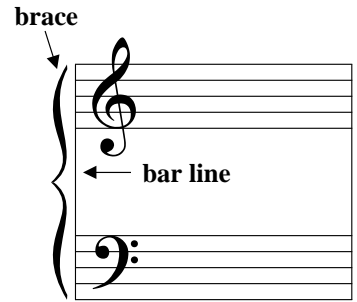
Lesson 8: The Grand Staff

The **grand staff** represents the treble staff and bass staff joined together.

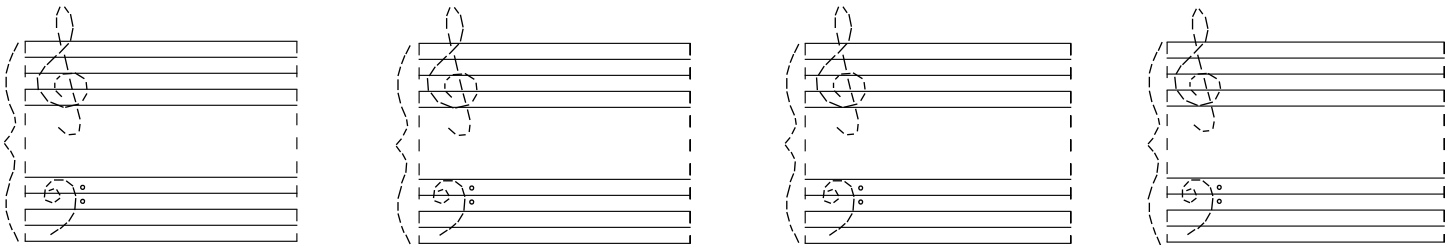
The brace is a curved line and bar line that combines the treble and bass staff.

A ledger line is a small line added to the note when it is either above or below the staff.

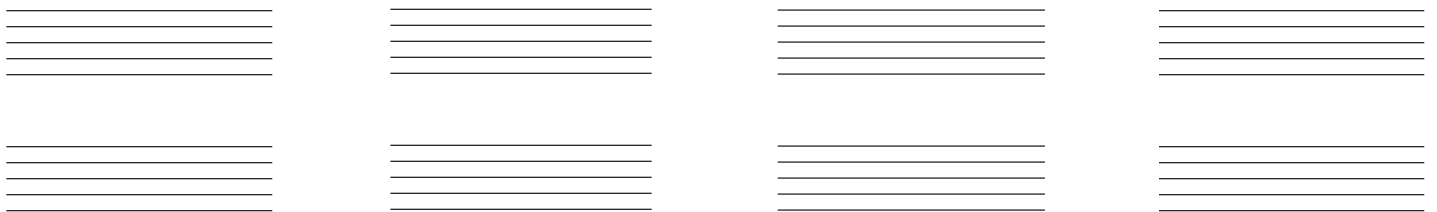
The Middle C note is on the ledger line that is between the treble and bass staff.



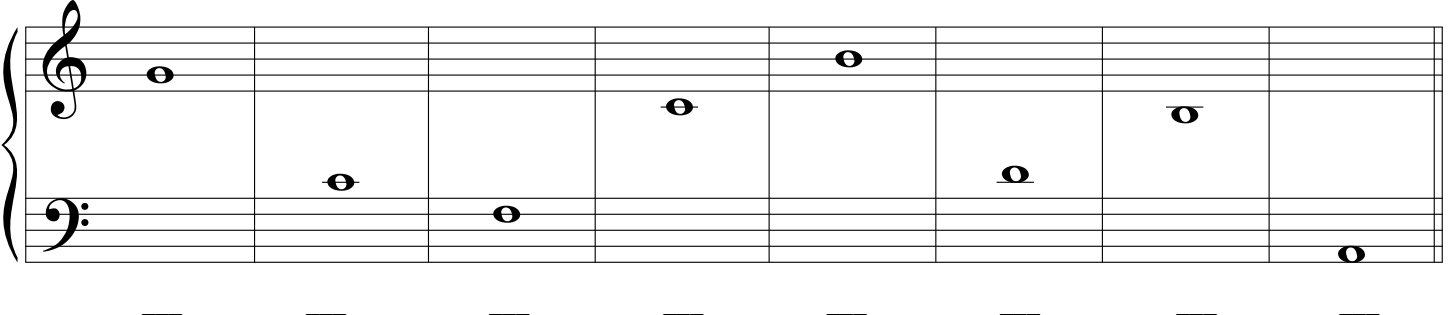
1. Draw the grand staff by tracing the braces, bar lines, and clefs.



2. Turn the following staff into grand staff by adding braces, bar lines, and clefs.



3. Write the letter name for each note.



Lesson 9: Ledger Lines

Ledger lines extend the staff upward and downward, to allow notes to be written beyond the five lines of the staff. The following shows examples of notes that can be written above and below the staff using ledger lines.

A B C D G A B C C D E F B C D E

1. Draw a treble clef at the beginning of the staff and write the letter name of each note.

2. Draw a bass clef at the beginning of the staff and write the letter name of each note.

3. Draw the indicated notes. Use ledger lines to draw the specified number of pitches without duplication.

Example

3 Cs

3 Ds

3 As

3 Es

2 Fs

3 Bs

2 Gs

3 Cs