

Lesson 1: The Staff

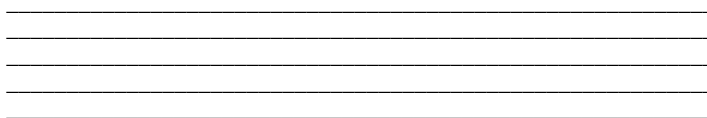
The musical **staff** is made up of five **lines** and four **spaces**.

Line 5 _____ Space 4
Line 4 _____ Space 3
Line 3 _____ Space 2
Line 2 _____ Space 1
Line 1 _____

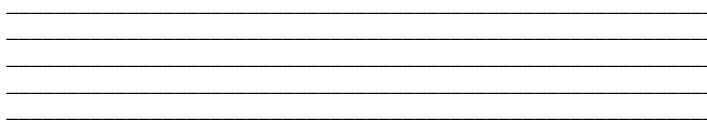
1. Practice drawing a staff by connecting the hyphens.



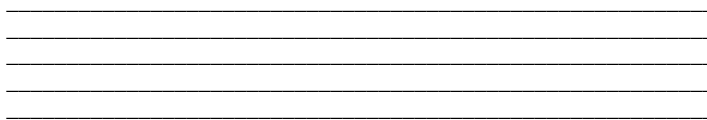
2. On this staff, number the lines from low to high.



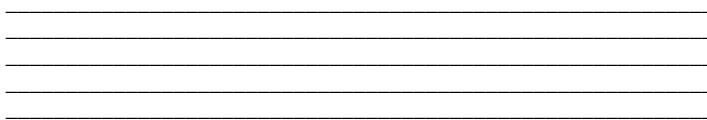
3. On this staff, number the spaces from low to high.



4. Draw a note on each line of the staff below.

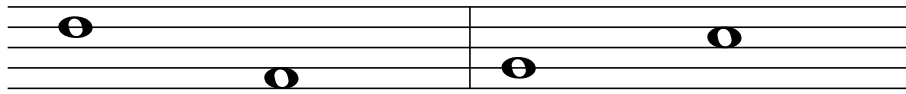


5. Draw a note on each space of the staff below.



The Staff - High and Low

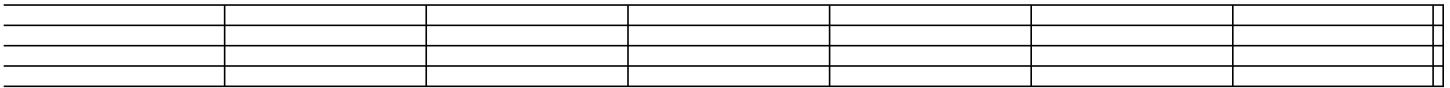
Musical sounds (low or high) are shown by the position of notes on the staff. Notes that are higher on the staff have a higher sound or pitch than those that are lower on the staff.



The first note sounds higher than the second note.

The first note sounds lower than the second note.

1. Draw a note on the indicated line or space, then circle the highest note you drew on the staff.



Line 3

Line 4

Space 1

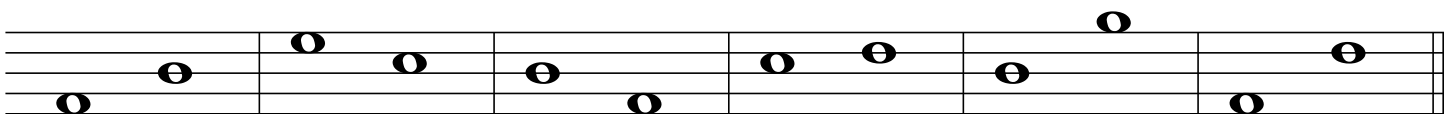
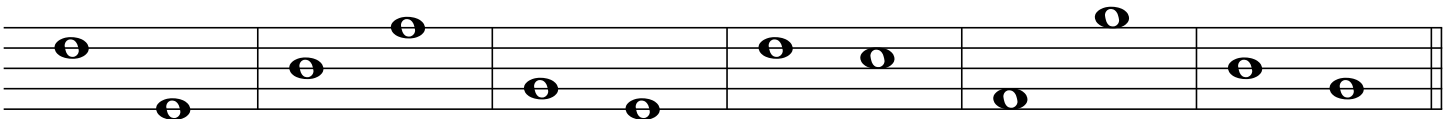
Line 5

Line 2

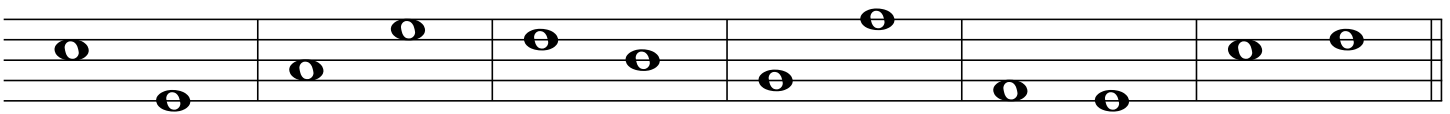
Space 3

Line 1

2. Use an arrow to indicate whether the second note of each measure sounds higher or lower in pitch than the first note.



3. Use the letters H and L to indicate whether the first note of each measure sounds higher (H) or lower (L) in pitch than the first note.



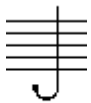
The Staff - Treble Clef

At the beginning of each staff there is a clef. The treble clef (also known as G clef) looks like this:



The treble clef gives establishes a landmark on the note G on the 2nd line of the treble staff.

To draw the treble clef, draw:
the line and tail



1.

the top loop



2.

the left loop



3.

the right loop



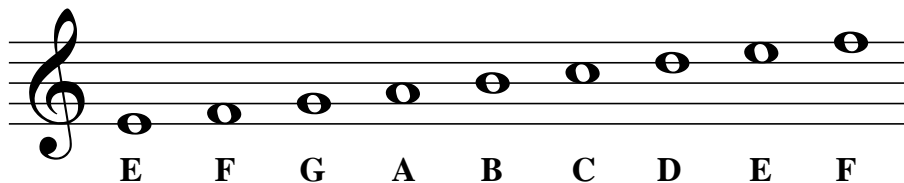
4.

the curl

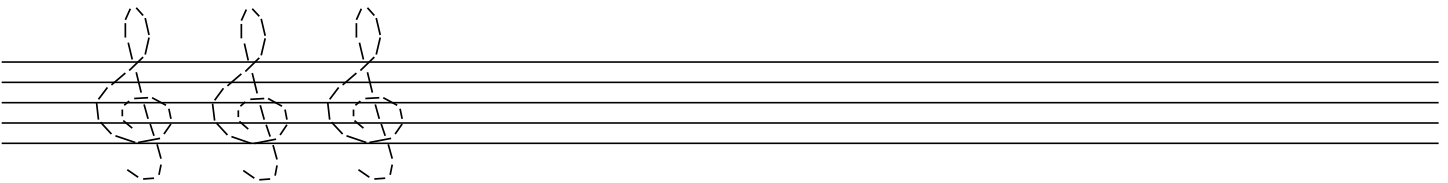


5.

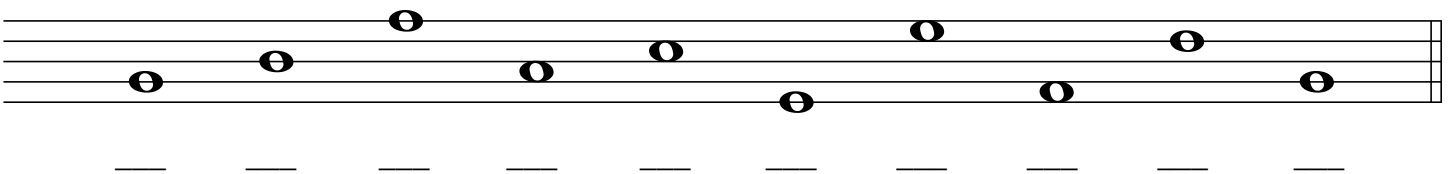
Notes are named after the first seven letters of the alphabet (A through G).



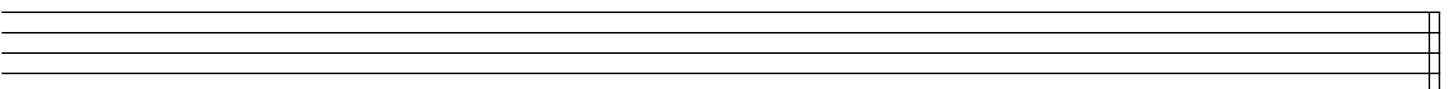
1. Try drawing the treble clef sign by tracing over the dotted lines. Then draw five more of your own.



2. Draw a treble clef at the beginning of the staff. Then write the letter names of each note.



3. Draw a treble clef at the beginning of the staff. Then draw the notes indicated. If a note can be written on more than one place on the staff, choose one.



G E B C D B A C D F

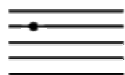
The Staff - Bass Clef

The bass clef (also known as F clef) looks like this:



The bass clef gives a landmark on the note F on the 4th line of the bass staff.

To draw the bass clef, draw:
a black dot



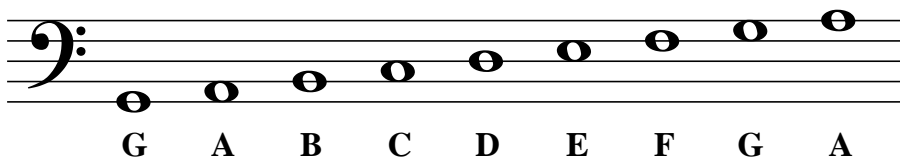
a curve



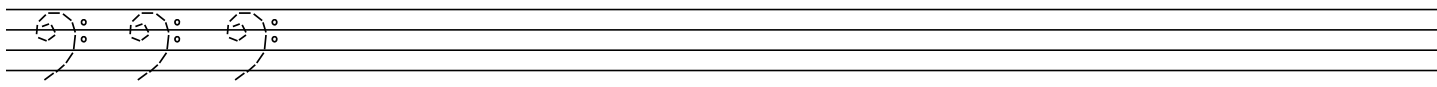
two dots



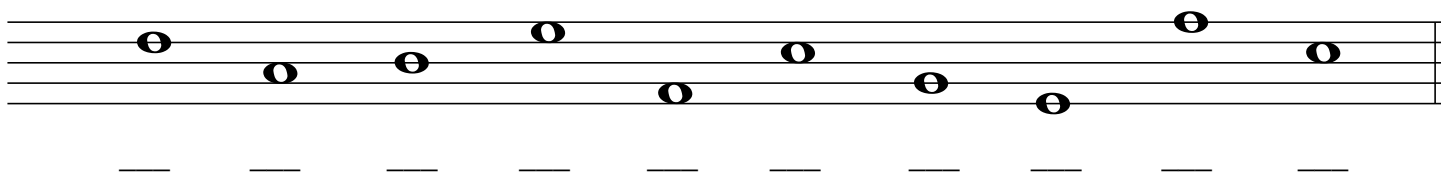
Notes are named after the first seven letters of the alphabet (A through G).



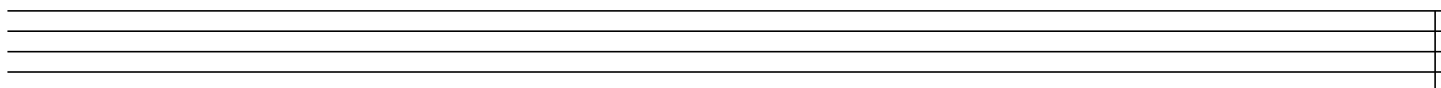
1. Try drawing the bass clef sign by tracing over the dotted lines. Then draw five more of your own.



2. Draw a bass clef at the beginning of the staff. Then write the letter names of each note.



3. Draw a treble clef at the beginning of the staff. Then draw the notes indicated. If a note can be written on more than one place on the staff, choose one.



F G A D F C B G D E

Lesson 5: Note Reading Worksheet

Treble Clef Line Notes

E G B D F

Every Good Boy Does Fine

Treble Clef Space Notes

F A C E

F A C E

Bass Clef Line Notes

G B D F A

Great Big Dragons Fly Around

Bass Clef Space Notes

A C E G

All Cows Eat Grass

Please indicate the following notes on the indicated space.

❖ Challenge! Please indicate the following notes that lie outside of the staff.
