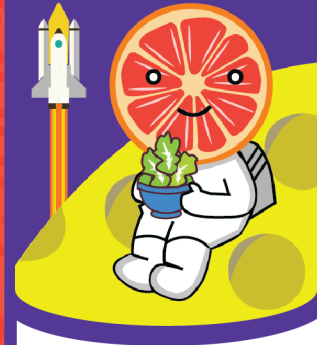


# KILGORE PRIMARY Kinder and 1<sup>st</sup> grade BREAKFAST MENU

# FEB

MENU 2024

## JOHNSON SPACE CENTER



### ANNOUNCEMENTS:

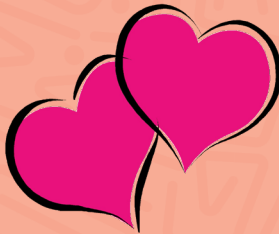
Water is available at every meal  
Beverage  
Org juice (4oz) 13g  
Apple (4oz)-14g  
1% white (8oz)-12g  
FF chocolate (8oz)-23g  
FF strawberry (8oz) 22g  
Condiments (1each)  
Grape jelly-9g, ketchup-3g, Maple syrup-31g, salsa 1g



**MONDAY**



**TUESDAY**



**WEDNESDAY**

cornflakes 18g  
Cherrios 21g  
Cinnamon chex 23g  
Cin toast crunch 22g  
Frosted mini wheats 24g  
Multigrain cheerios 21g  
Cinnamon frosted flakes 24g  
Honey cherrios 22g

**THURSDAY**

**1<sup>ST</sup> Entree**  
French toast minis 37g  
w/bacon 0.34g  
**Fruit/Vegetable choice**  
Applesauce 15g

**FRIDAY**

**2<sup>ND</sup> Entree**  
Yogurt bowl 48g (total)  
Yogurt, 16g blueberries, 10g capital grahams 22g  
**Fruit/Vegetable choice**  
Fruit cocktail 15g

**5<sup>TH</sup> Entree**  
Sausage 1g  
w/a biscuit 26g  
**Fruit/Vegetable choice**  
Diced pears 19g

**6<sup>TH</sup> Entree**  
Banana muffin 20g  
w/bacon 0.34g  
**Fruit/Vegetable choice**  
Pineapple tidbits 18g

**7<sup>TH</sup> Entree**  
Cereal variety 22g  
**Fruit/Vegetable choice**  
Diced peaches 17g

**8<sup>TH</sup> Entree**  
Scrambled eggs 1.2g  
Served w/cinnamon toast 23g  
**Fruit/Vegetable choice**  
Applesauce 15g

**9<sup>TH</sup> Entree**  
Chicken slider 6g  
w/a biscuit 26g  
**Fruit/Vegetable choice**  
Fruit cocktail 15g

**12<sup>TH</sup> Entree**  
Chicken chunks 15g  
Served w/maple waffkes 36g  
**Fruit/Vegetable choice**  
Diced pears 19g

**13<sup>TH</sup> Entree**  
Sausage bfast bites (5) 17g  
**Fruit/Vegetable choice**  
Pineapple tidbits 18g

**14<sup>TH</sup> Entree**  
Cereal variety 22g  
**Fruit/Vegetable choice**  
Diced peaches 17g

**15<sup>TH</sup> Entree**  
Confetti pancakes 36g  
w/bacon 0.34g  
**Fruit/Vegetable choice**  
Applesauce 15g

**16<sup>TH</sup> Entree**  
Strawberry flds parf 52g  
served w/grahams 22g  
**Fruit/Vegetable choice**  
Fruit cocktail 15g

**19<sup>TH</sup>**  
PRESIDENTS DAY HOLIDAY!  
NO SCHOOL!

**20<sup>TH</sup> Entree**  
Breakfast tacos (2) 31g  
**Fruit/Vegetable choice**  
Pineapple tidbits 18g

**21<sup>ST</sup> Entree**  
Cereal variety 22g  
**Fruit/Vegetable choice**  
Diced peaches 17g

**22<sup>ND</sup> Entree**  
French toast minis 37g  
w/bacon 0.34g  
**Fruit/Vegetable choice**  
Applesauce 15g

**23<sup>RD</sup> Entree**  
Yogurt bowl 76g  
Yogurt 16g, strawberries 38g & grahams 22g  
**Fruit/Vegetable choice**  
Fruit cocktail 15g

**26<sup>TH</sup> Entree**  
Sausage 1g  
w/a biscuit 26g  
**Fruit/Vegetable choice**  
Diced pears 19g

**27<sup>TH</sup> Entree**  
Banana muffin 20g  
w/bacon 0.34g  
**Fruit/Vegetable choice**  
Pineapple tidbits 18g

**28<sup>TH</sup> Entree**  
Cereal variety 22g  
**Fruit/Vegetable choice**  
Diced peaches 17g

**29<sup>TH</sup> Entree**  
Scrambled eggs 1.2g  
Served w/cinnamon toast 23g  
**Fruit/Vegetable choice**  
Applesauce 15g



Food and Nutrition Division  
National School Lunch Program



TEXAS DEPARTMENT OF AGRICULTURE  
**COMMISSIONER SID MILLER**

This product was funded by USDA.  
This institution is an equal opportunity provider.



Updated 2/1/2024  
www.SquareMeals.org