

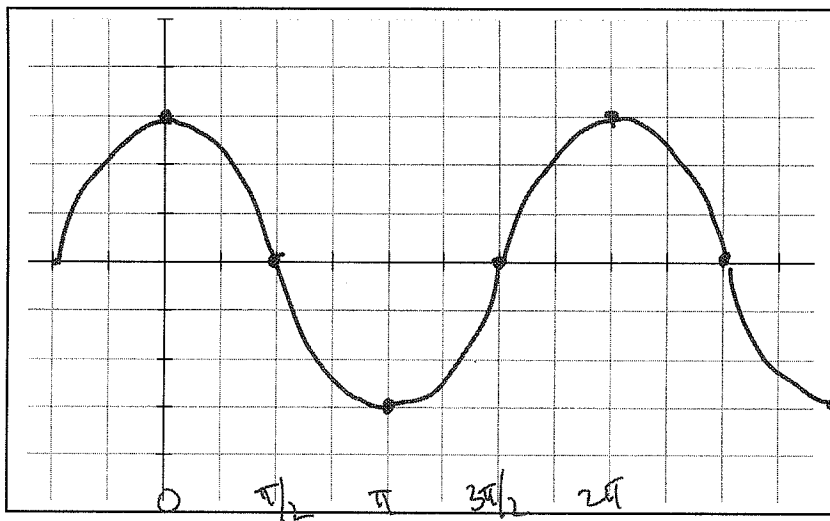
Writing Equations of Trig Functions

Use the given graph to find the key information and write the equation of the function.

1. Equation: $f(x) = 3\cos x$

Vertical shift: none Sinusoidal axis: $y=0$ Reflected? no

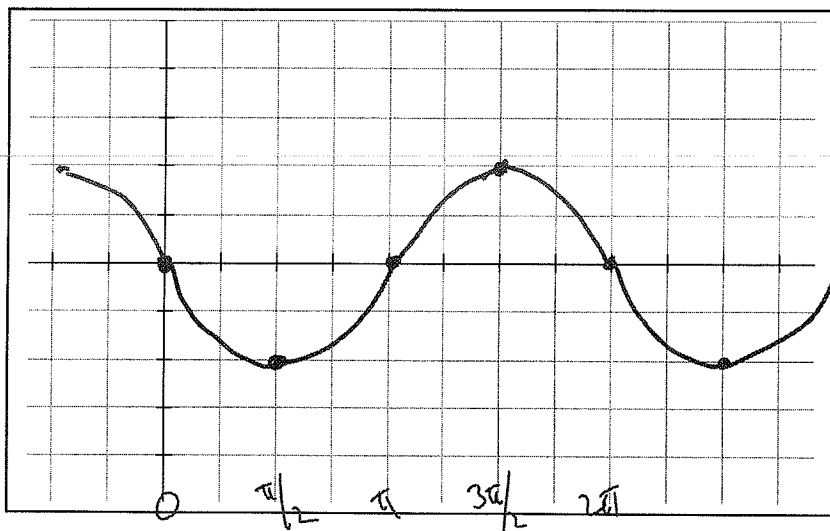
Amplitude: 3 Domain: $(-\infty, \infty)$ Range: $[-3, 3]$



2. Equation: $f(x) = -2\sin x$

Vertical shift: none Sinusoidal axis: $y=0$ Reflected? yes

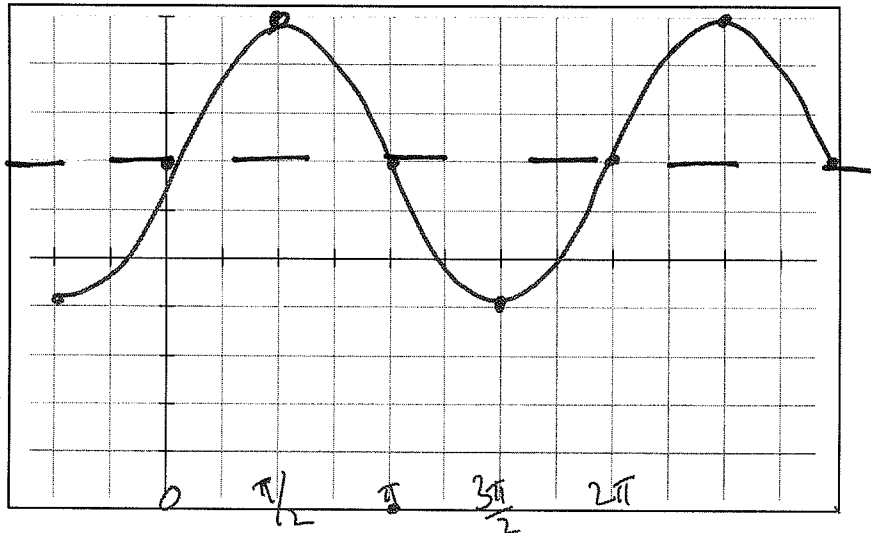
Amplitude: 2 Domain: $(-\infty, \infty)$ Range: $[-2, 2]$



3. Equation: $f(x) = 2 + 3\sin x$

Vertical shift: up 2 Sinusoidal axis: $y = 2$ Reflected? no

Amplitude: 3 Domain: $(-\infty, \infty)$ Range: $[-1, 5]$



4. Equation: $f(x) = -1 + 4\cos x$

Vertical shift: down 1 Sinusoidal axis: $y = -1$ Reflected? no

Amplitude: 4 Domain: $(-\infty, \infty)$ Range: $[-5, 3]$

