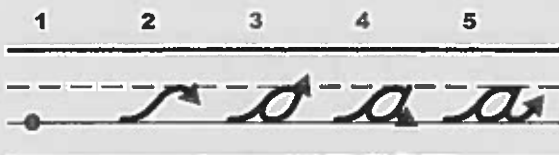


Cursive Letter Formation Verbalizations

Letter Formation for **c**

c is a two o'clock letter.

It starts on the (grass line).

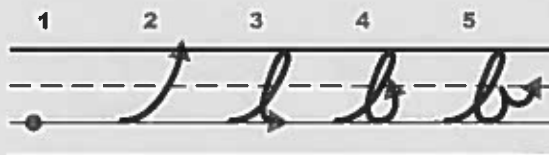


1. Point to the grass line.
2. Glide up towards the plane line, then around to two o'clock.
3. Trace back around to the grass line, then straight up to the plane line.
4. Trace down to the grass line,
5. and make a tail.

Letter Formation for **b**

b is a loop letter.

It starts on the (grass line).

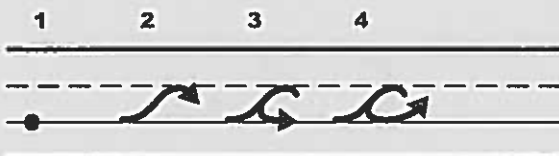


1. Point to the grass line.
2. Glide up to the sky line.
3. Loop back down to the grass line,
4. Make a big belly,
5. and make a swinging bridge.

Letter Formation for **c**

c is a two o'clock letter.

It starts on the (grass line).

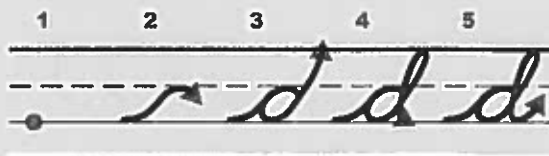


1. Point to the grass line.
2. Glide up towards the plane line, then around to two o'clock.
3. Trace back around to the grass line,
4. and make a tail.

Letter Formation for **d**

d is a two o'clock letter.

It starts on the (grass line).



1. Point to the grass line.
2. Glide up towards the plane line, then around to two o'clock.
3. Trace back around to the grass line, then way up to the sky line.
4. Loop back down to the grass line,
5. and make a tail.

Cursive Letter Formation Verbalizations

Letter Formation for e

e is a loop letter.

It starts on the (grass line).

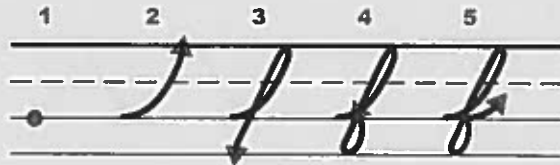


1. Point to the grass line.
2. Glide up to the plane line.
3. Loop back down to the grass line,
4. and make a tail.

Letter Formation for f

f is a loop letter.

It starts on the (grass line).

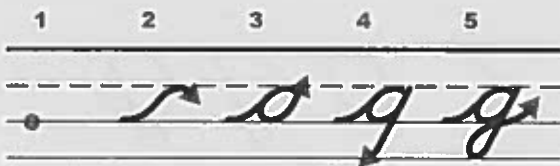


1. Point to the grass line.
2. Glide up to the sky line.
3. Loop back all the way down to the worm line.
4. Loop back up to the grass line,
5. and make a tail.

Letter Formation for g

g is a two o'clock letter.

It starts on the (grass line).



1. Point to the grass line.
2. Glide up towards the plane line, then around to two o'clock.
3. Trace back around to the grass line, then straight up to the plane line.
4. Trace way down to the worm line,
5. loop back up to the grass line and make a tail.

Letter Formation for h

h is a loop letter.

It starts on the (grass line).



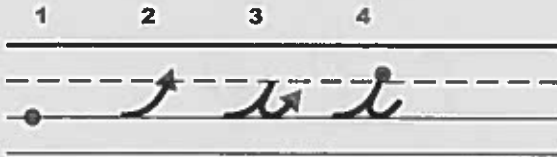
1. Point to the grass line.
2. Glide up to the sky line.
3. Loop back down to the grass line,
4. Trace up to the plane line, make a hump.
5. Go back to the grass line and make a tail.

Cursive Letter Formation Verbalizations

Letter Formation for **i**

i is an up/down letter.

It starts on the (grass line).

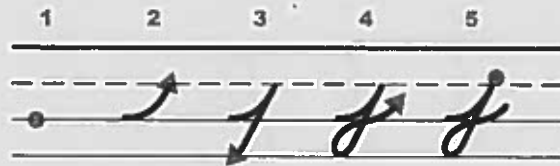


1. Point to the grass line.
2. Glide up to the plane line.
3. Trace down to the grass line and make a tail.
4. Add a dot.

Letter Formation for **j**

j is an up/down letter.

It starts on the (grass line).

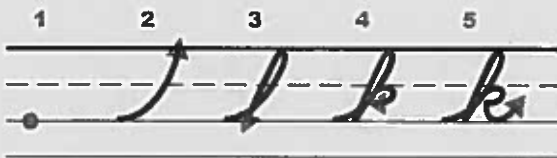


1. Point to the grass line.
2. Glide up to the plane line.
3. Go all the way down to the worm line.
4. Loop back up to the grass line, and make a tail.
5. Add a dot.

Letter Formation for **k**

k is a loop letter.

It starts on the (grass line).

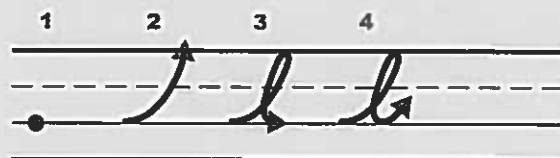


1. Point to the grass line.
2. Glide up to the sky line.
3. Loop back down to the grass line,
4. Trace up to the plane line and make a little belly.
5. Go back to the grass line and make a tail.

Letter Formation for **l**

l is a loop letter.

It starts on the (grass line).



1. Point to the grass line.
2. Glide up to the sky line.
3. Loop back down to the grass line,
4. and make a tail.

Cursive Letter Formation Verbalizations

Letter Formation for m

m is a hump letter.

It starts on the (grass line).

1 2 3 4 5



1. Point to the grass line.
2. Glide up to the plane line and make a hump.
3. Trace back up to the plane line, make a hump,
4. Trace back up to the plane line, make another hump,
5. and make a tail.

Letter Formation for n

n is a hump letter.

It starts on the (grass line).

1 2 3 4



1. Point to the grass line.
2. Glide up to the plane line and make a hump.
3. Trace back up to the plane line, make another hump,
4. and make a tail.

Letter Formation for o

o is a two o'clock letter.

It starts on the (grass line).

1 2 3 4



1. Point to the grass line.
2. Glide up towards the plane line, then around to two o'clock.
3. Trace back around to the grass line, then up around to connect the lines,
4. and make a swinging bridge.

Letter Formation for p

p is an up/down letter.

It starts on the (grass line).

1 2 3 4 5

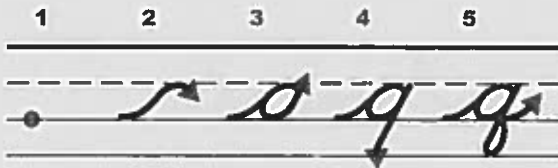


1. Point to the grass line.
2. Glide up to the plane line.
3. Go all the way down to the worm line,
4. Trace up to the plane line, make a big belly,
5. and make a tail.

Cursive Letter Formation Verbalizations

Letter Formation for Q

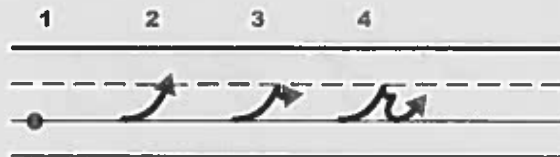
q is a two o'clock letter.
It starts on the (grass line).



1. Point to the grass line.
2. Glide up towards the plane line, then around to two o'clock.
3. Trace back around to the grass line, then straight up to the plane line.
4. Trace way down to the worm line,
5. loop back up to the grass line and make a tail.

Letter Formation for r

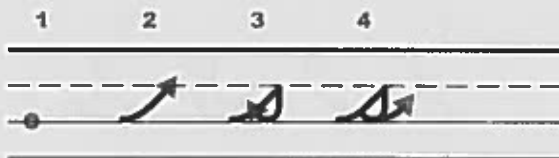
r is an up/down letter.
It starts on the (grass line).



1. Point to the grass line.
2. Glide up to the plane line.
3. Make half of a swinging bridge,
4. go back to the grass line and make a tail.

Letter Formation for s

s is an up/down letter.
It starts on the (grass line).



1. Point to the grass line.
2. Glide up to the plane line.
3. Go straight down to the grass line, connect the lines,
4. and make a tail.

Letter Formation for t

t is an up/down letter. This letter goes way up, all the way to the skyline.
It starts on the (grass line).

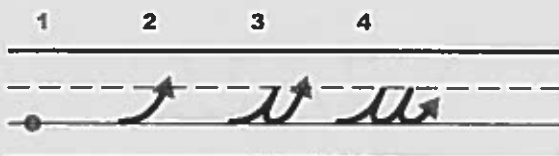


1. Point to the grass line.
2. Glide way up to the sky line.
3. Trace back down to the grass line,
4. and make a tail.
5. Cross it on the plane line.

Cursive Letter Formation Verbalizations

Letter Formation for U

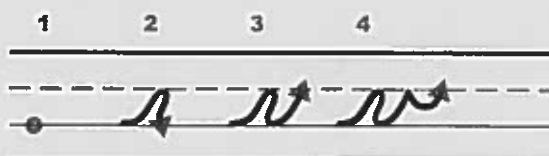
u is an up/down letter.
It starts on the (grass line).



1. Point to the grass line.
2. Glide up to the plane line.
3. Trace down to the grass line, swing back up to the plane line.
4. Trace down to the grass line, make a tail.

Letter Formation for V

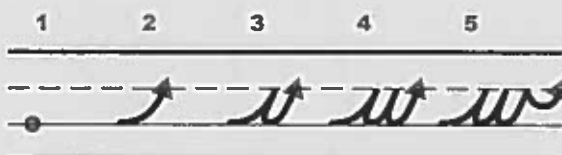
v is a hump letter.
It starts on the (grass line).



1. Point to the grass line.
2. Glide up to the plane line and make a hump.
3. Curve back up to the plane line,
4. and make a swinging bridge.

Letter Formation for W

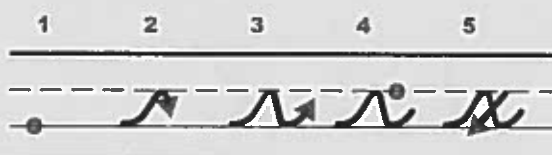
w is an up/down letter.
It starts on the (grass line).



1. Point to the grass line.
2. Glide up to the plane line.
3. Trace down to the grass line, swing back up to the plane line.
4. Trace down to the grass line, swing back up to the plane line.
5. Make a swinging bridge.

Letter Formation for X

x is a hump letter.
It starts on the (grass line).



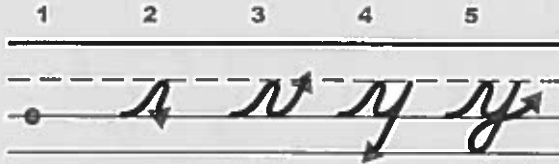
1. Point to the grass line.
2. Glide up to the plane line, make a wide hump,
3. sliding to the grass line, and make a tail.
4. Leave a space at the plane line.
5. Slide back to the grass line.

Cursive Letter Formation Verbalizations

Letter Formation for **y**

y is a hump letter.

It starts on the (grass line).

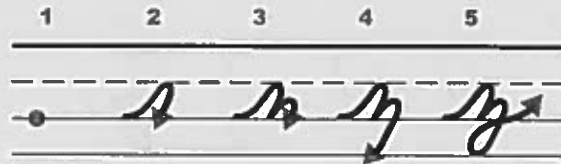


1. Point to the grass line.
2. Glide up to the plane line and make a hump.
3. Curve up to the plane line,
4. Trace way down to the worm line,
5. loop back up to the grass line and make a tail.

Letter Formation for **z**

z is a hump letter.

It starts on the (grass line).



1. Point to the grass line.
2. Glide up to the plane line and make a hump.
3. Trace up and make a smaller hump.
4. Go way down to the worm line,
5. loop back up to the grass line and make a tail.