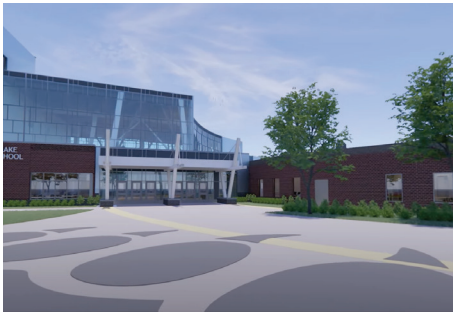


PHASE 1 Progress

White Bear Lake Area High School

Moving toward a Grades 9-12 high school



West Entrance

At the West Entrance, new additions bookend the former 400s wing. The tall glass wall provides the Union space with a large amount of natural light. An outdoor entry plaza connects the new student drop-off area and bus lane to the Activities Entrance on the right and the West Entrance on the left. The West Entrance has served as the Main Building Entrance since January 2023, when students moved into the new space to allow for renovations and additions to take place in the other half of the building. The entry is marked by columns inspired by sailboat masts, a design element that continues into the Union. Once guests step inside the entrance, they will be met by a greeter at the secure entry point. Upon entry, the finished portion of the Union is directly ahead and the Temporary Main Office Space is just to the left.



Union

Standing just inside the West Entrance, to the right is the entry to the main gym, which is being renovated and is nearly complete. The open Union area serves as a large gathering space and walkway, as well as doubling as the school's cafeteria. The far wall is the former 100s/200s wing, which kept its windows to allow the abundance of natural light to filter into those rooms. The connection to the new classroom addition from the existing building is beyond the new Learning Stairs, which provide an area to sit and work on and an area to travel to and from the second floor.

When school begins in the fall of 2024, the Union will offer a variety of furniture and seating options and ceiling treatments reminiscent of sails build upon the water and lake-based theme design found throughout the building. On the right, serving lines with different colored entries will highlight the variety of foods offered. Looking back toward the entry, the wood wall is the site of a future student-run coffee shop.



Game Gym

Clerestory windows were added to the existing game gym in order to provide natural light into the space. Seating is expanded to incorporate bleachers on all four sides of the court, increasing our capacity to approximately 1900. The new wood floor is striped to accommodate a variety of activities, both on the main court and on the side courts. Spectators will be able to enter from both the Union area and the Field House area. Before the 2024-25 school year begins, a student-run store and concession area will be located in the hallways approaching the game gym from the Union and Field House. We are excited to begin using the game gym during the 40th anniversary year of the high school's back-to-back undefeated state championship basketball teams.



This High School renovation and addition project was made possible by community support of the 2019 Bond Referendum and is one of many comprehensive facilities plan projects happening throughout the district. Additional info and updates about the district's comprehensive facilities planning projects can be found at www.isd624.org/BuildingOurFuture.

www.isd624.org



651-407-7500



/isd624



Learning Studio

Each of the building's Learning Studios are shared by a team of teachers, with students entering the space and checking the display monitor at the entrance to see which of the spaces their class is using that day. Continuing inside the studio, the variety found within the space supports the different needs of students. Conference rooms allow for small group work and individual student support sessions, and a central flex area offers shared access to technology. The many different types of furniture and furniture configurations make the Learning Studios flexible and support student agency and choice.

Moving further back into the Learning Studio, various quiet and individual work spaces support focused learning, while larger class spaces allow teachers and students to use the areas that best support their needs for each activity. Some spaces can be closed off or opened up to one another, supporting team teaching and larger group work while still allowing for separation of sound when needed. Visibility among the spaces allows learning to happen beyond the boundaries of a typical room and walls.



Fieldhouse

From the outdoor entry plaza, the Athletics Entrance is marked with complementary ship mast-inspired columns. The new weight room fitness center can be seen through the vertical windows that line the external wall proudly donning the large Bear Paw. This separate entrance allows specific access to this part of the building, including the new fieldhouse, for evening and weekend events.

The Athletics Entrance lobby connects the new addition to the existing building. In the fall of 2024, this lobby will connect to the renovated competition gym to the left. For the time being, the lobby provides access to the new weight room fitness center highlighted by glass on the right, to the new auxiliary gym on the left, and to the upper level walking track straight ahead. The staircase featuring the large Bear Paw leads to the fieldhouse floor, which is at the same level as the current gym floor.



A four-lane walking track is available on the upper level of the fieldhouse and provides views of the courts below. Spirit graphics on the walls and acoustically-absorbing panels in school colors bring a sense of Bear Pride and comfort to the space. Staircases located in the corners of the fieldhouse are framed by natural light and vibrant colors. The track is currently open for free community use in the evenings.

The fieldhouse floor features five new full-sized court surfaces - three wood courts and two with multipurpose flooring. Each court can be separated off with curtains, providing flexibility for both PE and activities. A five-lane indoor track, complete with a long jump pit, supports practice and training for a variety of activities and allows White Bear Lake Area High School to host indoor track meets.



Fields and Stadium

The new 1500-seat Stadium features a state-of-the-art track and artificial turf field, a Main Entry gate near the main building and a combined concessions stand, bathroom, and storage building. Additional site updates include various multipurpose artificial turf fields for PE class, athletics practices, and competitions.

When all projects are finished in the fall of 2024, the outdoor spaces will support the needs of students and the community with new tennis courts, space for a full set of field events with dedicated bleachers for fans and a reconfiguration of Price Field.

FUN FACTS: It is rumored that the district's unusual high school set-up was a "temporary fix" when it was implemented in the 1980s, honoring the community's wishes for one high school while overcoming the challenge that no district building could accommodate all students. Since that time, White Bear Lake Area High School has implemented the two-campus system with one campus housing grades 9-10 and the other housing grades 11-12.

District residents supported a 2019 bond referendum that allows us to create a single high school by adding on to the building that currently houses grades 9-10. The grades 9-12 high school will open in the fall of 2024.

A Few of Our Favorite Things
Enjoy a highlight of some favorite
elements of the building project:

