

# Facilities Advisory Committee

The background image shows a spacious, modern school library. On the left, there are long wooden study tables with bookshelves underneath. A student is sitting at one of the tables, looking at a book. In the center, a tall vertical sign reads "JUANITA HIGH SCHOOL". To the right, there are more study tables and blue armchairs. Two students are sitting at a table, looking at a laptop. Large windows on the right side of the room provide a view of the outside. The ceiling has exposed wooden beams and modern lighting fixtures.

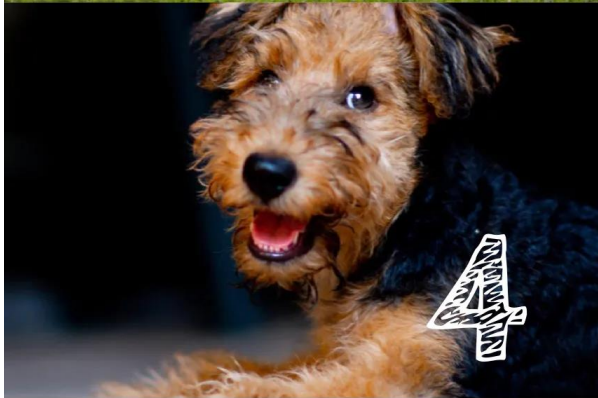
Welcome to Juanita High School!

Thursday, January 18, 2024

5:00-7:00



# Check-in



On the dog  
scale, how  
are we  
feeling?



- ❖ Which dog represents how you're feeling tonight?
- ❖ If you could replace the picture with a different pet, who would that be?



# Agenda

**Focus: Developing communication strategies to strengthen community understanding of LWSD construction plans, processes and projects**

- **5:00-5:45:**
  - FAC Member Survey Results and FAQ
  - Board Funding Recommendation Update
  - Project Considerations in Current Projects *w/Brian Buck & Laura DeGooyer*
    - Site considerations
    - Structural considerations
    - Responsive strategy shifts
    - Working with municipalities
- **5:45-5:50: Break**
- **5:50-6:30: Current Information Sharing Strategies *w/Shannon Parthemer***
  - Current strategies
  - Input on strengthening strategies
- **6:30-7:00: Juanita High School – Rebuild Information and Tour**



---

## FAC Survey Results:

*What topics/Information would you like to learn more about?*

- Communication
  - Success stories
  - How we share information
- Construction Considerations
  - Renovating vs. rebuilding aging facilities
  - Portables
- Rules and regulations
  - How many students per class is ideal
  - Demographic analysis and 10-year enrollment forecast



---

## FAC Survey Results:

*What topics would you like to provide input on?*

- Communication
  - Messages and highlights
  - Information provided to voters
- Levy processes and next steps
  - Contingency plans
  - Long-term funding strategy
- Future of education



---

## FAC Survey Results: *Recommendations for effective meetings*

### ***Recommendations for effective meetings***

- Publish agenda/slides ahead of time
- Keep up the collaboration and laughter
- Similar structure to first two meetings
- Have discussions surrounding school improvements and ballot measures





---

## Interests & Questions

- Typical school and class sizes
- Levy planning
- How construction decisions are made
- Communicating plans & progress with the community



# LWSD School and Class Sizes

## School Size – Current educational specification capacity by Level

- Elem – 690 students
- Middle - 900 students
- High School – 1800 students
- *All schools designed with 4-classroom addition options*

## Class Size – Target Student/Teacher Ratio

- Grades K-1 – 20:1
- Grades 2-3 – 23:1
- Grades 4-5 – 27:1
- Grades 6-8 – 30:1
- Grades 9-12 – 32:1

❖ Teacher ratios represent target/average class sizes. Actual class size may be smaller or larger depending on the enrollment at each school. Refer to Capital Facilities Plan Section I and III for additional information.



# Levy Planning: Follow up from November Board Study Session

---

- Recommendations
- Timelines



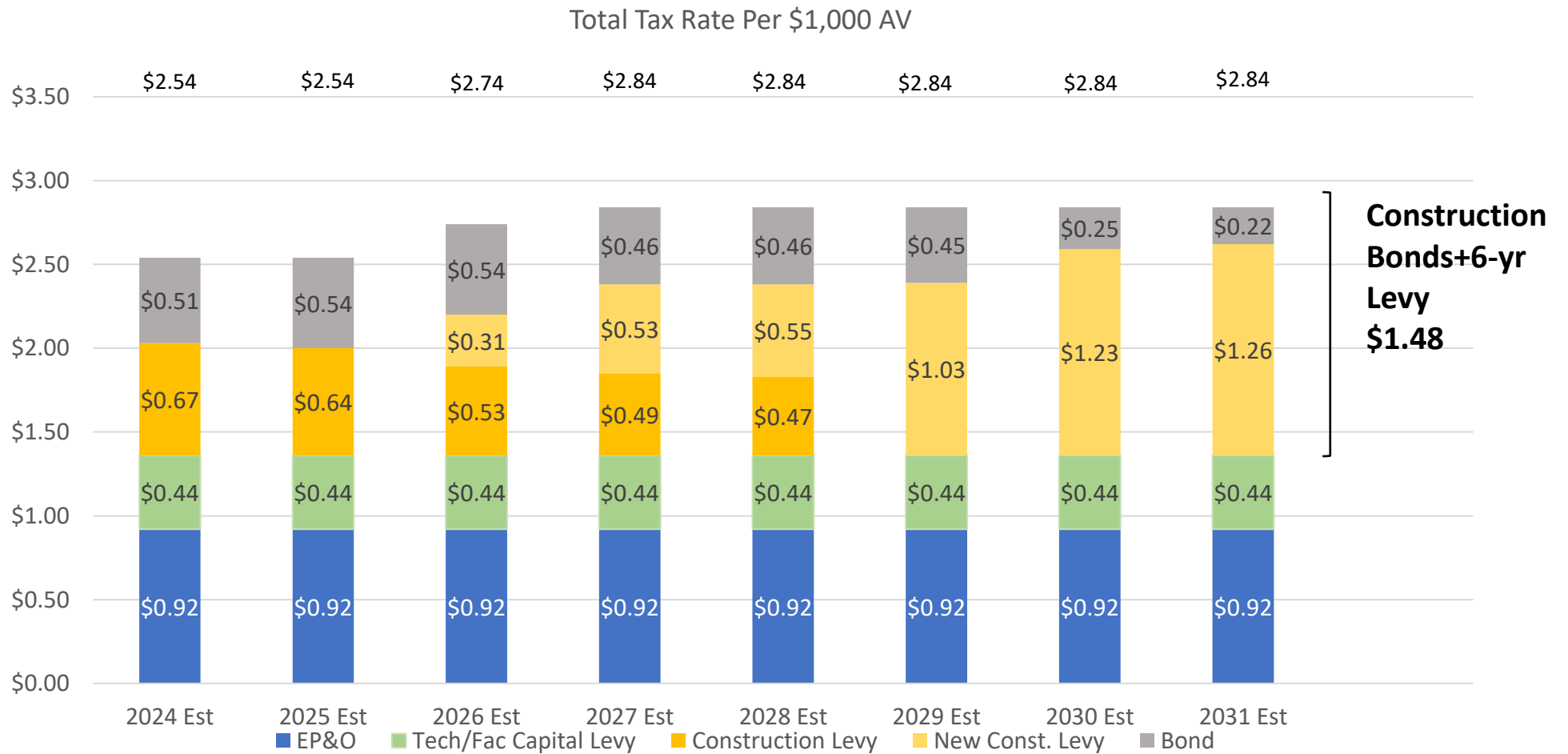
# Funding Recommendation

## November 2024 Six-Year Levy

Collection year	Amount	Total Rate/\$1,000 AV
2026	\$32,900,000	\$0.31/\$1,000 AV
2027	\$59,700,000	\$0.53/\$1,000 AV
2028	\$65,700,000	\$0.55/\$1,000 AV
2029	\$128,575,000	\$1.03/\$1,000 AV
2030	\$161,629,000	\$1.23/\$1,000 AV
2031	\$172,944,000	\$1.26/\$1,000 AV

The overall tax rate for construction will remain stable as past bonds are paid off and prior construction levies expire.

# District Levy and Bond Rates – with Proposed Levy

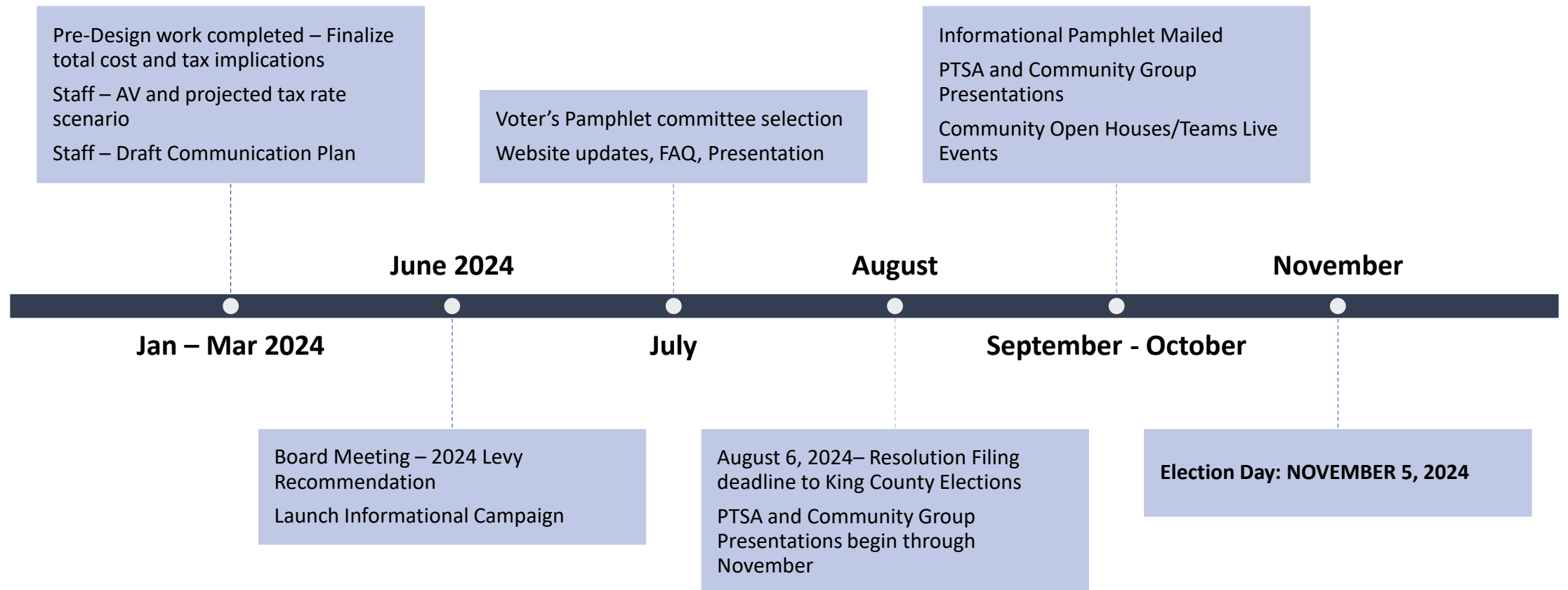




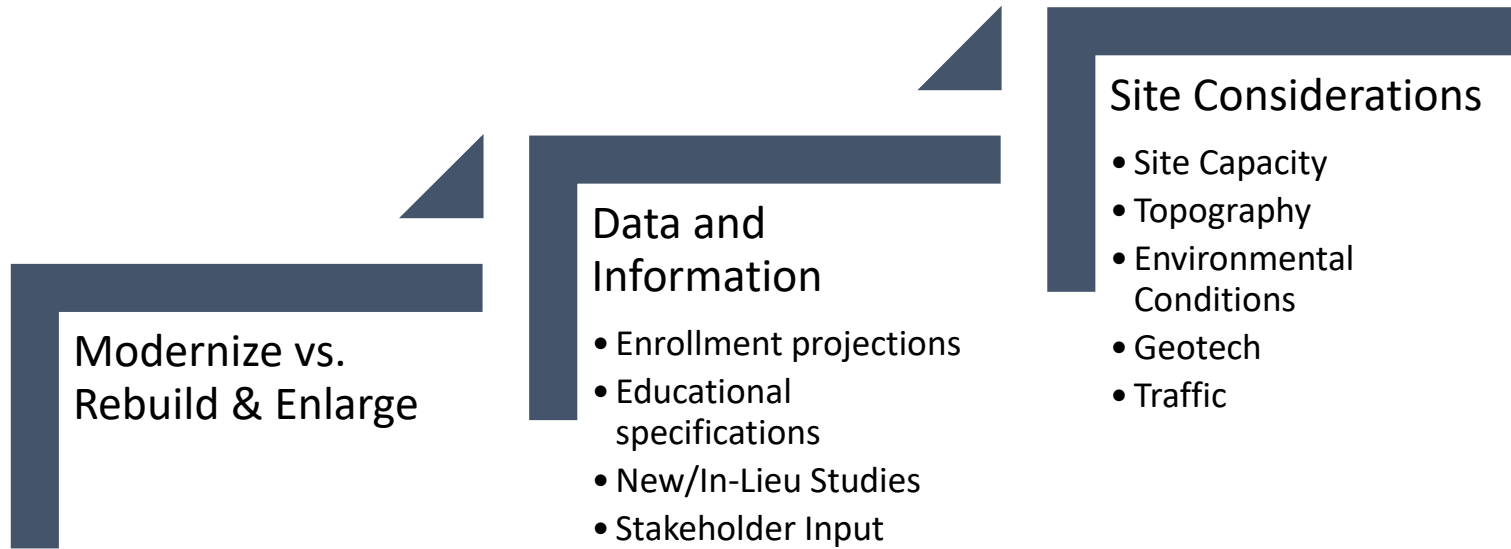
# Construction Levy Timeline

## November 2024 Election

*Work Items and Milestones: November 2023 – November 2024*



# Common Variables Impacting Construction



# Variables Impacting Construction: Gathering Input



LYDIG

April 27, 2023

Ina Holzer  
Lake Washington School District  
Kirkland, WA 98052

Attn: Ina Holzer

RE: **LWSD Rockwell Elementary School  
2013 Modernization/Replacement Study – 2023 Update**

Ina,

Thank you for the opportunity to review the 2013 Modernization/Replacement Study of Rockwell Elementary School. Based upon our review of the information provided, we have utilized the Maximum Allowable Construction Costs (MACC) 2012 cost estimates as a baseline comparison. We have escalated the 2012 budgets based on historical cost indexes within the Puget Sound area and projected out to the mid-point of construction in 2025.

1) Here are the baseline numbers we utilized from the 2013 study which utilized costs from 2012 to provide a MACC comparison:

MACC COMPARISON 2012 COSTS			
MODERNIZATION		REPLACEMENT	
Modernize Existing Building	\$ 9,815,864	New Construction	\$ 16,905,000
New Additions	\$ 7,666,540	Site Redevelopment (On/Off Site)	\$ 2,820,000
Site Redevelopment	\$ 2,820,000	Relocation/Safety Coord.	\$ 600,000
Temporary Housing/Relocation	\$ 650,000	Local Conditions	\$ 900,000
Local Conditions	\$ 900,000	Demolition/Abatement	\$ 518,485
Partial Demolition Existing Structure	\$ 27,500		
Totals	\$ 21,879,904	Totals	\$ 21,743,485

2) In consideration of the 2022 Levy program, Rockwell Elementary School was evaluated to determine whether modernization/additions or replacement of the existing school onsite was the better approach to meet the District's long-range education and facilities goals. The 24 teaching stations (550 students), 2012 Education Specification Standards was applied to

5180 139th Ave SE Ste 110 Bellevue WA 98005  
425.885.3314 | www.lydig.com

Modernize vs.  
Rebuild &  
Enlarge

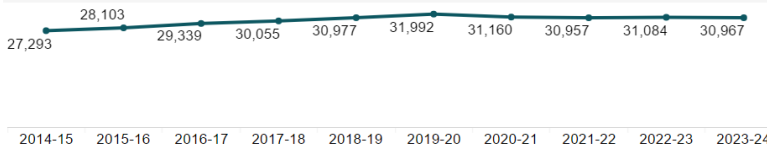
## Data and Information

- Enrollment projections
- Educational specifications
- New/In-Lieu Studies
- Stakeholder input

## Site Considerations

- Site Capacity
- Topography
- Environmental Conditions
- Geotech
- Traffic

### Total Student Enrollment





# Variables Impacting Construction: Alcott & Smith

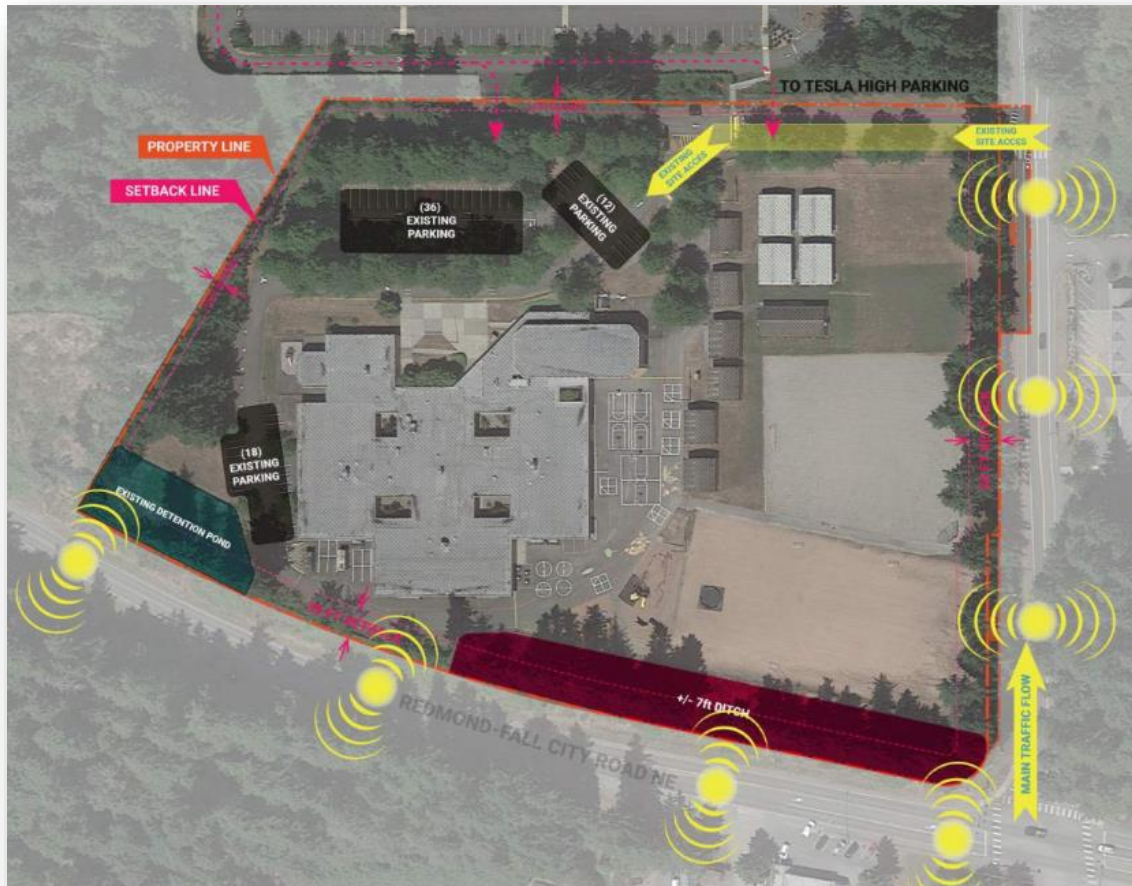
Modernize vs.  
Rebuild &  
Enlarge

Data and  
Information

- Enrollment projections
- Educational specifications
- New/In-Lieu Studies
- Stakeholder Input

Site  
Considerations

- Site Capacity
- Topography
- Environmental Conditions
- Geotech
- Traffic





# Common Variables Impacting Construction: EMS & KaMS

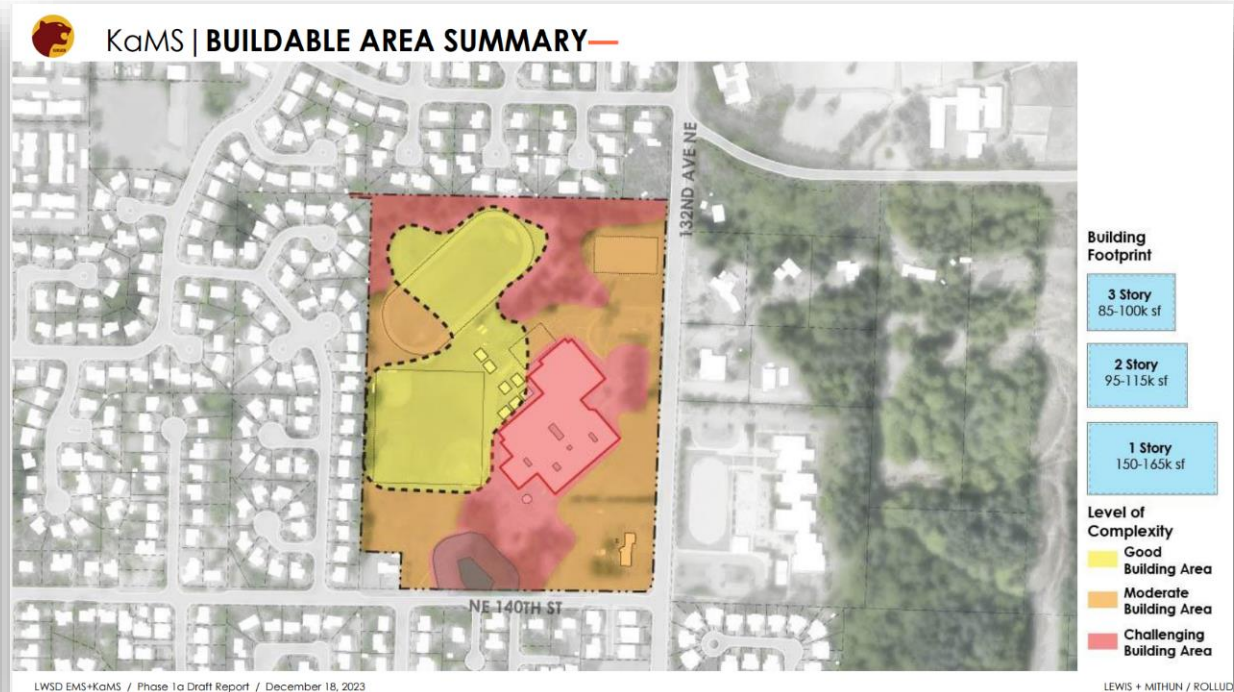
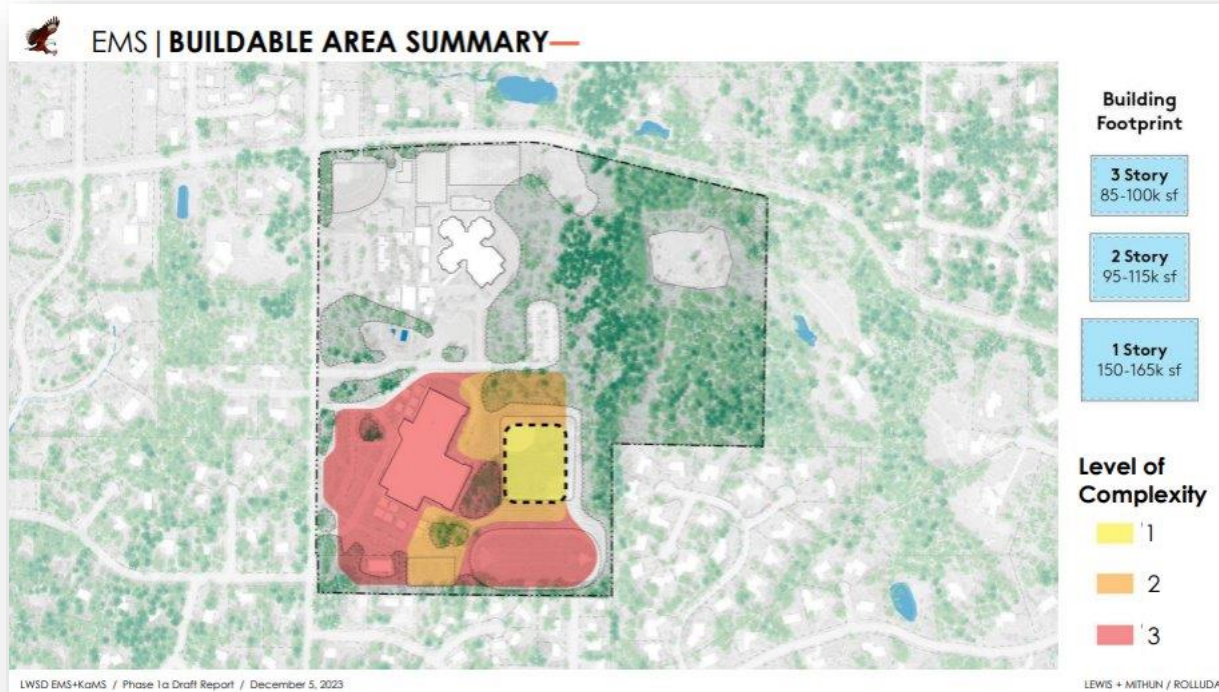
Modernize vs.  
Rebuild &  
Enlarge

Data and  
Information

- Enrollment projections
- Educational specifications
- New/In-Lieu Studies
- Stakeholder Input

Site  
Considerations

- Site Capacity
- Topography
- Environmental Conditions
- Geotech
- Traffic



# Common Variables Impacting Construction: EMS & KaMS

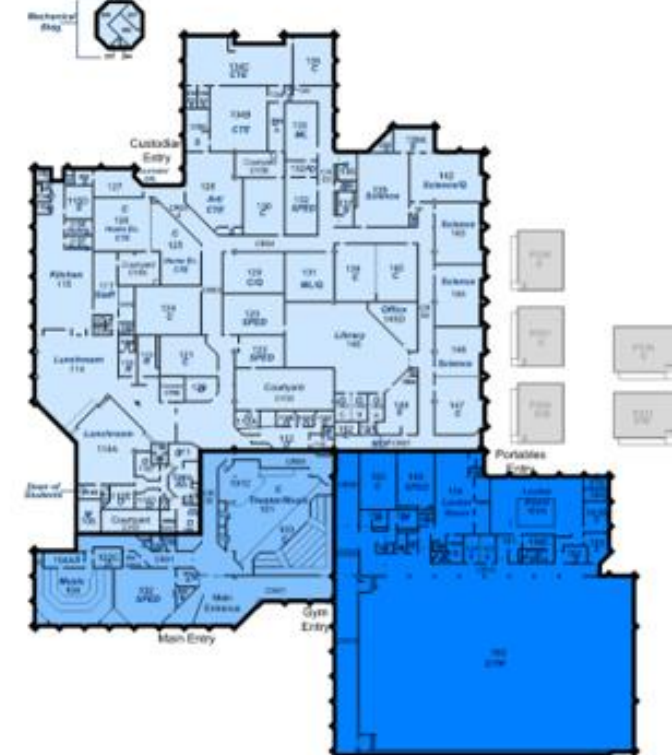
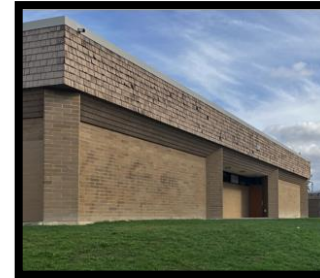
## Modernize vs. Rebuild & Enlarge

### Data and Information

- Enrollment projections
- Educational specifications
- New/In-Lieu Studies
- Stakeholder Input

### Site Considerations

- **Site Capacity**
- Topography
- Environmental Conditions
- Geotech
- Traffic





# Break!

Coming Up:

- **5:50-6:30: Current Information Sharing Strategies w/Shannon Parthemer**
  - Current strategies
  - Input on strengthening strategies
- 6:30-7:00: Juanita High School – Rebuild Information and Tour



# Current Information- Sharing Strategies

Shannon Parthemer, APR  
Director of Communications  
[sparthemer@lwsd.org](mailto:sparthemer@lwsd.org)

## OVERVIEW:

- Review current strategies, tools
- Aging Facilities Communications Plan
- Consider successes and challenges/suggestions for improvement



# Input on Communication Strategies

- **Current strategies:**
  - Webpage - [Construction - Lake Washington School District \(lwsd.org\)](https://lwsd.org)
  - Videos – Alcott/Smith SCIT Team, more to come...
  - Social media – regular posts with advertising boosts
  - Printed mailer (2x per year – first in December; next in Spring)
  - *Connections* e-newsletter (2x per month – at least one article about Building Excellence)



# Aging Facilities Communications Plan – Key Elements

## Key Messages:

- Growth has slowed in LWSD, so the community-based Facility Advisory Committee has helped us determine that now is the time to focus on our remaining aging facilities – Evergreen Middle School, Kamiakin Middle School, Alcott Elementary, Smith Elementary and the fieldhouse/pool at Juanita High School.
- LWSD uses data to drive our decisions, ensuring that we have appropriately planned for future facility needs.

## Objectives:

- Ensure the community is aware of aging schools and why a levy would be needed to support the modernization or rebuild of older facilities.
- Help the community understand that these aging facilities need to be replaced and enlarged for future students.

## Strategies:

- Utilize social media, website and other communications tools to share information about aging facilities and why upgrades are needed at these schools.
- Film videos at each aging facility sharing how the current school does not meet our educational specifications.
  - Evergreen M.S., Kamiakin M.S., Alcott El., Smith El., Fieldhouse/Pool at Juanita High School

## Timeline:

- Throughout Spring 2024.



# FAC Input: Strengthening Communication

- **Your input needed:**
  - How does current plan meet needs?
    - What is missing?
  - Suggested revisions?
  - What other information should be shared?
    - How should this information be shared?
- In table groups, discuss the above questions and put your response on chart paper. We'll share out the responses as a whole group.

# Future Work Plan Outline

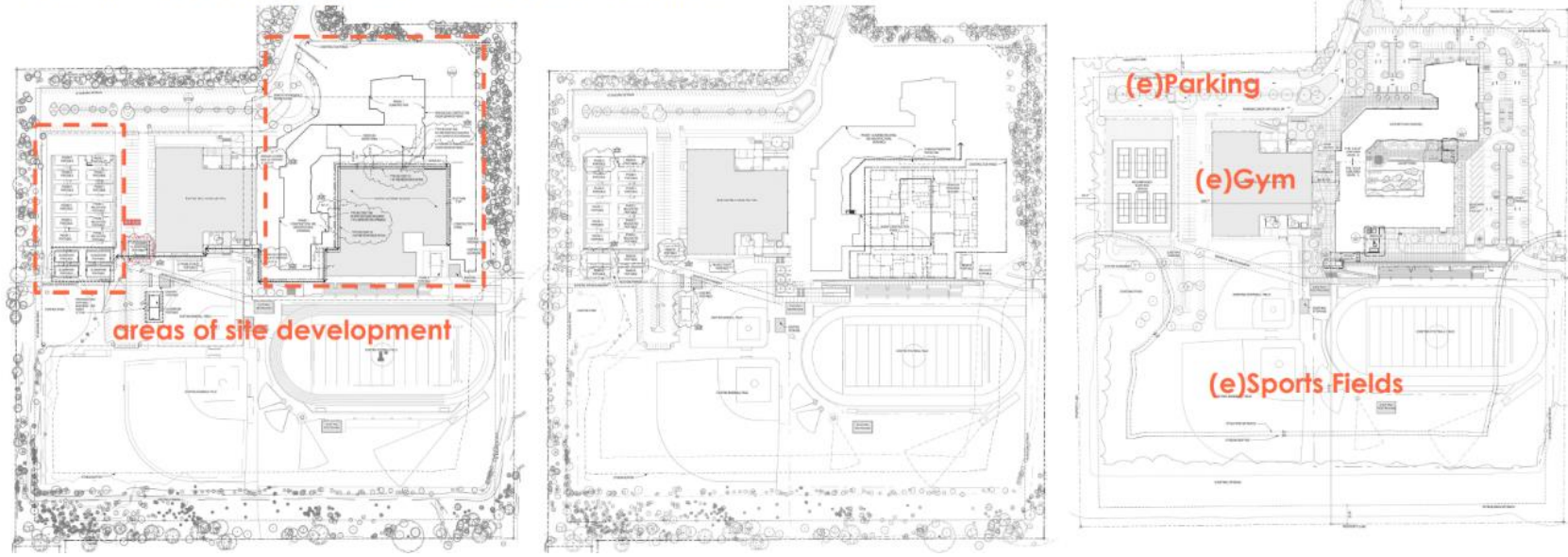
Date	Location	Topics
February 22	Alcott Elementary	<ul style="list-style-type: none"><li>• Communication Plan Update; SCIT team updates; Aging school designs; Tour of portables – old and new</li></ul>
March 21	Kamiakin Middle School	<ul style="list-style-type: none"><li>• Building Excellence – Phase 1 Updates; New in lieu studies; Emerson HS</li></ul>
April 18	Redmond High School	<ul style="list-style-type: none"><li>• Building Excellence – Phase 2 Updates</li></ul>
May 16	Mead Elementary	<ul style="list-style-type: none"><li>• Funding measure update</li></ul>
June 20	Kirkland Middle School	<ul style="list-style-type: none"><li>• Maintaining facilities; Maintaining vs. expanding vs. rebuilding; Construction Tour – Modular Addition</li></ul>

❖ *Content of agendas may evolve*





Example: Juanita High School - Phased Construction



# Juanita High School Tour

- Age and design
  - 1971 – Open concept, multiple entrances/exits
- Structural Analysis
  - Older building, not a candidate for remodel, required a rebuild of academic building
  - Field House with Pool Retained
- Site Topography
  - Land considerations
  - Phased rebuild on existing footprint while maintaining existing athletic spaces and facilities
- School and community engagement influenced design
  - More open spaces, improved flow, specialty classrooms and a counseling center, spaces for community and collaboration, improved security
- Efficiencies during the project allowed additional improvements to existing athletic spaces and facilities