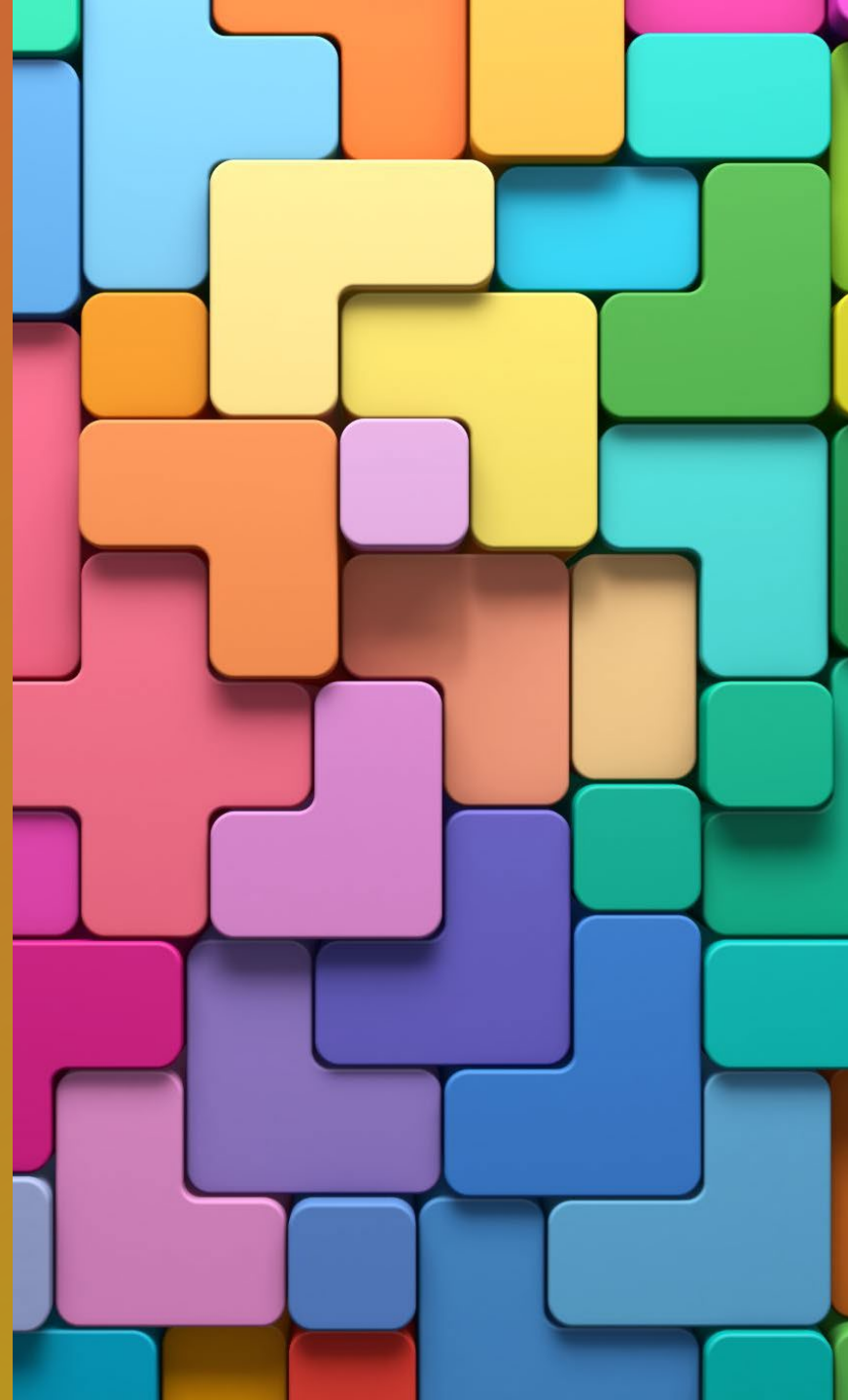


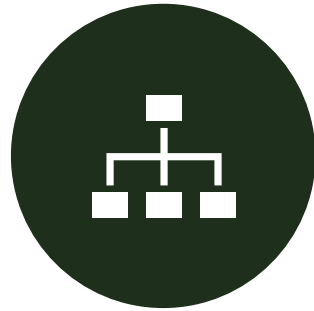
PBIS REBOOT



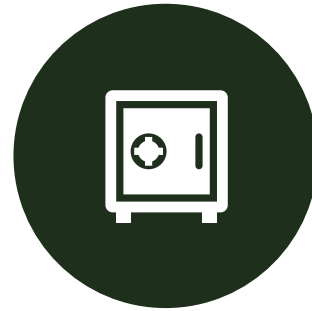
PILLAR #1—CLASSROOM EXPECTATIONS



RESPECTFUL



RESPONSIBLE



SAFE



KIND

On January 15th teachers re-establish these expectations.

Classroom Expectations Charts

Respectful	
Responsible	
Safe	
Kind	

What to Expect

What if...

<i>What if I do?</i>	<i>What if I don't?</i>
Chill/happy teacher	Verbal warning
Positive phone call home	Seat change
Pick your seat	Cool down conversation with teacher
Food rewards/Lynx Tickets	Buddy room with reflection
Class music	Call home
Class party	Lunch detention
Etc...	Office referral

PILLAR #2 —
BEHAVIOR
EXPECTATIONS
OUTSIDE OF
CLASSROOM



ALL LYNX ARE:

RESPECTFUL

- USE SCHOOL APPROPRIATE LANGUAGE

SAFE

- KEEP YOUR HANDS, FEET, AND OTHER OBJECTS TO YOURSELF

RESPONSIBLE

- LISTEN TO DIRECTIONS THE FIRST TIME

KIND

- TREAT OTHERS WITH KINDNESS AND PATIENCE



IN THE BATHROOM, LYNX ARE:

RESPECTFUL

- RESPECT PRIVACY
- RESPECT PROPERTY

RESPONSIBLE

- TAKE SHORTEST PATH
- FLUSH, WASH, GO BACK TO CLASS

SAFE

- KEEP YOUR HANDS, FEET, AND OTHER OBJECTS TO YOURSELF

KIND

- KEEP THE BATHROOMS CLEAN AND WORKING - WE ALL NEED THEM!



OUTSIDE, LYNX ARE:

RESPECTFUL

- USE SCHOOL APPROPRIATE LANGUAGE

RESPONSIBLE

- NO FOOD OUTSIDE
- COME INSIDE WHEN CLEANUP BELL RINGS

SAFE

- KEEP YOUR HANDS, FEET, AND OTHER OBJECTS TO YOURSELF
- PLAY SAFELY

KIND

- BE NICE TO OTHERS WHILE YOU PLAY



IN THE CAFETERIA, LYNX ARE:

RESPECTFUL

- USE SCHOOL APPROPRIATE LANGUAGE

SAFE

- KEEP YOUR HANDS, FEET, AND OTHER OBJECTS TO YOURSELF

RESPONSIBLE

- NO FOOD OUTSIDE
- CLEANUP YOUR MESS AT YOUR TABLE

KIND

- NO BUTTING IN LINE
- SAY PLEASE AND THANK YOU

CELLPHONE POLICY

- No phones, headphones, or other electronics that are distractions can be used from 8:00 - 2:30.



PILLAR #3—SCHOOL ECONOMY



- If all students were on time, give them a ticket
- Lynx store
- Lynx Raffle
- Spirit Bowl points
- Pick song in passing period
- Etc...

PILLAR #4--CONSEQUENCES



MAYBE NOT NECESSARY
FOR SCC

TARDY DATA

- Maybe include current and previous tardy data???

TARDY POLICY

- Positive rewards over consequences
- Early out lunch for classes with zero tardies - pick a random day and period each week and all the classes with zero tardies would release their students five minutes early for lunch.
- Music—turn off = 1 minute left
- Tardy reflection sheet for students to fill out.

HALL PASSES

- The number of hall passes a teacher gives out is up to the individual teacher.
- Hall passes should be limited during 4th period. Because of lunch.
- No hall passes during the first 10 minutes nor the last 10 minutes of class.