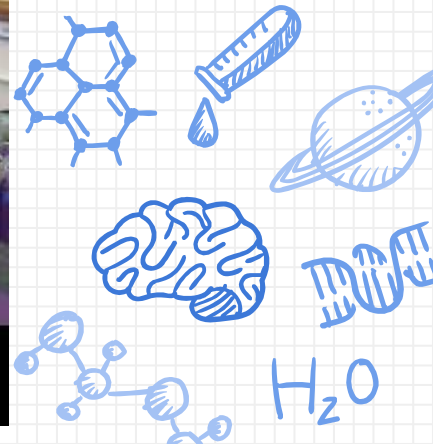
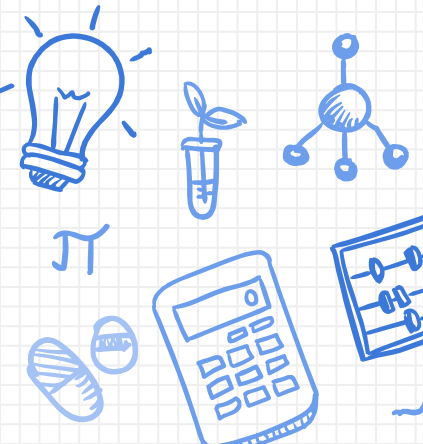


Choosing a Middle School



Choosing a Middle School – Open Enrollment

- ✗ What is open enrollment?
 - ✗ Open enrollment is the time in which you and your family can choose a middle school if you want
 - ✗ Now through Mar. 4th, 2022
- ✗ By the end January you will receive a postcard in the mail with your reserved spot
 - ✗ All students have a saved (reserved spot) in a middle school
 - ✗ If you want to change, then you and your family need to:
 - APPLY



Choosing a Middle School – Open Enrollment

Everyone has a reserved school

- ✗ This means you don't have to do anything unless you want to
- ✗ Your reserved spot is in a middle school that is closest to you
 - Most students from DB go to Battle Creek MS
 - Open House [Link](#)
- ✗ Have more questions?
 - Go to the next slide and tap the link



Helpful Online Resources

[LEARN](#) about SPSS Open Enrollment

[EXPLORE](#) SPSS Schools

[Middle School Cheat Sheets](#)

[APPLY](#) to an SPSS School

[\(Online Application\)](#)

[Student Placement Center](#)

Open House Dates

IP= In-person, V=Virtual

- **American Indian Magnet**
 - Jan. 25, 9:00am (IP)
- **Battle Creek Middle**
 - Jan. 27, 5:30pm (V)
- **Capitol Hill**
 - 10:15 AM on Jan. 20, 25 & 27 and Feb. 3 & 10. Reservations required <https://forms.gle/B5rWRPoLGD0v7AYA>
- **Creative Arts Secondary (6-12)**
 - Thu, February 24, 2022, 5pm – 7pm (V)
- **E-STEM Middle School**
 - Feb. 3, 6:00pm (V)
- **Farnsworth Aerospace**
 - Feb. 8, 5:00pm (V)
- **Global Arts- Upper**
 - Feb. 17, 5:30pm (V)
- **Hazel Park Preparatory**
- **Highland Park Middle**
 - Thu, January 13, 2022, 6:00pm – 7:30pm (V)
- **Humboldt Secondary (6-12)**
 - Thurs. Feb. 24th 6:00pm-7:00pm (V)
- **Murray Middle**
 - Feb. 8, 5:30pm (V)
- **Open World Learning**
 - Jan. 20, 6:30pm (IP)
- **Ramsey Middle**
 - January 27, 2022, 5:00pm – 6:30pm (IP)
- **Washington Technology**
 - Jan. 27, 6:00pm (IP/V)

Middle School Open Enrollment Period

Now through MARCH 4th, 2022

LEARN + EXPLORE + APPLY

What is Open Enrollment?

Every 5th grade SPSS student automatically has a reserved seat at a Middle School for 2022-2023 school year. *By the end of January, you should receive a postcard in the mail informing you of the school your student currently has a seat reserved at for the 2022-2023 school year.* If you do not receive this postcard, I suggest calling the Student Placement Center, 651-632-3700, to inquire.

SPSS values families and students having choices in programs that meet their student's needs, so they offer an [open enrollment](#) period to allow families to apply for a school *other* than the one their student was automatically assigned. During the open enrollment period, all schools will be offering virtual open houses and presentations to prospective parents about their school to help with the decision-making process.

What if my student wants to attend the school where they have a reserved seat?

If you and your student want them to attend the school as indicated on their seat reservation card mailed to your home- **no need to do anything further!** However, I still strongly suggest attending the [virtual open house presentations](#) to learn more about your student's future school!

Can I apply to any SPSS Middle School for my student?

Yes, you can apply to any school. However, not all schools will provide transportation, depending on where you live. To learn more about schools with transportation available to your student, insert your home address into the SPSS School Finder: <https://apply.spps.org/>

How do I choose the best fit for my student?

The Student Placement Center has [workshops](#) you can attend online for support. They will be in several languages. Do not hesitate to contact me directly if you have any specific questions!

Mrs. Hardman
School Counselor
brooke.hardman@spps.org
651-744-2018 (Office)

Tap me



Text

Tap me



Videos

A decorative border of various science-related icons surrounds the central text. The icons include a lightbulb, a brain, a DNA helix, a globe, a microscope, a test tube, a beaker, a rocket, a star, a magnifying glass, a book, a calculator, a graph, a chemical structure, a cell, a virus, a leaf, a water molecule (H2O), a square root symbol (√2), a lightbulb, a brain, a DNA helix, a globe, a microscope, a test tube, a beaker, a rocket, a star, a magnifying glass, a book, a calculator, a graph, a chemical structure, a cell, a virus, a leaf, a water molecule (H2O), a square root symbol (√2), a lightbulb, a brain, a DNA helix, a globe, a microscope, a test tube, a beaker, a rocket, a star, a magnifying glass, a book, a calculator, a graph, a chemical structure, a cell, a virus, a leaf, a water molecule (H2O), and a square root symbol (√2).

**Do you and your family have
questions?**

Contact Mrs. Hardman

brooke.hardman@spps.org

Call - 651-744-2018