



Wilson High

GRADES

9-12

ENROLLMENT

1225

CLASS SIZE

25

AVERAGE

STUDENT TO
TEACHER
RATIO

25:1

PRINCIPAL

Dr. Eric
Robinson

1411 Old Marion Hwy
Florence SC 29506
843-664-8440 O
843-664-8176 F

MISSION

To mold young minds to be creative, knowledgeable, productive citizens of good character in an ever-changing, challenging world.

f1s.org/wilson

NOTEWORTHY

International Baccalaureate Diploma

The only high school in F1S to offer the IB Diploma, Wilson High School is internationally certified to provide the IB curriculum to highly motivated students. The program consists of a rigorous, college preparatory curriculum, a profound commitment to learning, and significant community service requirements.

Early College Program

Wilson students benefit from an Early College Program partnership with Florence-Darlington Technical College that allows them to complete a high school diploma, along with an Associate Degree. Additionally, students have the option of earning certifications in key vocational areas, such as welding, nurse assisting, and machine tooling.

ACADEMIC EXCELLENCE

State-of-the-Art Engineering Lab

Students at Wilson High School take virtual classes from a number of colleges and universities.

Electives

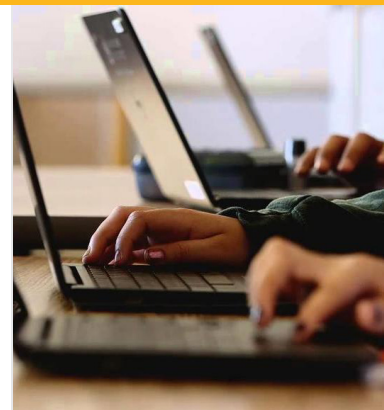
Our academic electives are directly tied to the interests of our students. We encourage them to tap into their creativity through an expanding roster of engaging courses that include everything from health sciences to coding to drones. Our world-class teachers help students build foundational knowledge in an area or areas of their choice.

Faculty & Staff

We're a dedicated team of 86 teachers and staff; 72% of our teachers hold advanced degrees.

Extracurricular Activities

Extracurricular competitions allow students to represent their school and earn recognition for their achievements. Extracurricular activities give students a chance to learn something new or learn more about something that interests them, to develop a talent, or to perform with their peers. Extracurricular activities also give students a chance to develop and demonstrate leadership.



Technology

1:1 Chromebooks

WilsonHighS
WilsonHighSchoolF1S

MASCOT **Tiger**

COLORS



FOUNDED **1866**

COMMUNICATIONS & COMMUNITY INVOLVEMENT

Communications

We're committed to clear, concise, and consistent communication. We utilize Blackboard for automated phone calls, text messages, and emails to keep families informed of events at the school, as well as emergency closings, school attendances, and low-balance calls from our cafeteria. We also encourage all students and families to use the F1S app for critical messages from the District. 60% of parents indicate satisfaction with school-home relations.

Community Involvement

Community and parent involvement are vital to our School's success. We're fortunate to have an active Parent Teacher Association and School Improvement Council, as well as a growing number of business partners and mentors.

Wilson High School celebrates a strong Alumni Association and we're the only high school in the state with a branded license tag. Proceeds from the tags provide academic scholarships.

SAFETY

The safety of our students is a top priority. We continually learn and evaluate best practices to strengthen formal Safety Plans. We work with law enforcement and state safety officials to train all members of our faculty and staff, and we conduct periodic drills to ensure everyone on campus understands his or her role during a crisis. Our School is equipped with metal detectors, and we follow a strict protocol with visitors.

76%

of parents indicate their children feel safe at school

90%

of teachers feel safe at school before and after hours

ENHANCED LEARNING

High-Tech Communication

During the 2019–20 academic year, our 1:1 Chromebook initiative is being enhanced by the Google Classroom web-based learning environment, which allows students to collaborate seamlessly with peers and teachers. Google Classroom provides a digital safe space to view class announcements, access posted course content, access posted class assignments, and turn in completed work.



Wilson High School Report Card 2018–2019

ENGLISH
LANGUAGE
ARTS & MATH

BELOW
AVERAGE

SCIENCE
& SOCIAL
STUDIES

BELOW
AVERAGE

GRADUATION
RATE

GOOD

STUDENT
ENGAGEMENT

EXCELLENT



Overall, performance meets the criteria to ensure all students meet the Profile of the SC Graduate

2018–19 SCHOOL REPORT CARD RATING

AVERAGE