

NYSED 2022-2023 Grades 3-8 ELA and Math Data

Dr. K. Veronica Smith

Acting Superintendent of Schools

Dr. Jamal Doggett

*Assistant Superintendent for Elementary
Curriculum and Instruction and Administration*

January 23, 2024 – Board Meeting



Achievement Goals for the Mount Vernon City School District

- For at least 75% of students performing at Accountability Levels 2, 3, and 4 on NYS Grades 3-8 ELA & Math, Grade 5 Science
- Increase (at least 3% subgroup proficiency rate from the previous year) student performance/achievement on NYS 3-8 & Regents
- 50%: NYS 3-8 tests districtwide results (% of students performing at Accountability Levels 2, 3, and 4) are linked to the student performance component of the APPR Plan for K-8 Teachers. Targets were established through collaboration with the union leadership and district leadership and are aligned with the District's academic goals



Mount Vernon City School District

NYSED ELA Grades 3-8

2021-22 NYS ELA All Students								
Test Grade	Tested Students	L1	L2	L3	L4	Proficiency Rate	% L2, L3, L4	Overall Proficiency Rate
3	433	85	161	168	19	43%	72%	39%
4	450	150	150	105	45	33%		
5	450	160	165	72	53	28%		
6	466	129	98	118	121	51%		
7	446	114	174	114	44	35%		
8	379	85	131	99	64	43%		
	2624	723	879	676	346			
		28%	33%	26%	13%			

2022-23 NYS ELA All Students								
Test Grade	Tested Students	L1	L2	L3	L4	Proficiency Rate	% L2, L3, L4	Overall Proficiency Rate
3	445	155	113	129	48	40%	74%	42%
4	430	92	151	130	57	43%		
5	398	119	136	107	36	36%		
6	434	108	144	116	66	42%		
7	476	124	147	146	59	43%		
8	461	90	153	155	63	47%		
	2644	688	844	783	329			
		26%	32%	30%	12%			

Data Trends

% L2, L3, L4	Proficiency Rate
2% ↑	3% ↑

There is a story behind each school's data performance (programming, new students to testing grades, student transfers, increase in subgroup testing, school performance, vacancies, proficient students leaving the district, opt-outs, etc.)

Benjamin Turner Middle School

2021-22 NYS ELA All Students								
Test Grade	Tested Students	L1	L2	L3	L4	Proficiency Rate	% L2, L3, L4	Overall Proficiency Rate
5	34	13	10	8	3	32%	66%	38%
6	35	10	8	8	9	49%		
7	40	13	15	12	0	30%		
8	43	15	11	11	6	40%		
	152	51	44	39	18			
		34%	29%	26%	12%			

2022-23 NYS ELA All Students								
Test Grade	Tested Students	L1	L2	L3	L4	Proficiency Rate	% L2, L3, L4	Overall Proficiency Rate
5	31	9	11	9	2	35%	60%	31%
6	45	15	16	9	5	31%		
7	47	24	10	11	2	28%		
8	51	21	14	14	2	31%		
	174	69	51	43	11			
		40%	29%	25%	6%			

Data Trends

% L2, L3, L4	Proficiency Rate
-6%	-7%

Cecil H. Parker School

2021-22 NYS ELA All Students								
Test Grade	Tested Students	L1	L2	L3	L4	Proficiency Rate	% L2, L3, L4	Overall Proficiency Rate
3	22	10	8	4	0	18%	57%	22%
4	29	12	10	6	1	24%		
5	25	10	12	2	1	12%		
6	43	26	9	8	0	19%		
7	20	5	9	3	3	30%		
8	26	8	10	8	0	31%		
	165	71	58	31	5			
		43%	35%	19%	3%			

2022-23 NYS ELA All Students								
Test Grade	Tested Students	L1	L2	L3	L4	Proficiency Rate	% L2, L3, L4	Overall Proficiency Rate
3	33	13	6	8	6	42%	62%	34%
4	15	4	8	2	1	20%		
5	24	11	7	5	1	25%		
6	23	10	6	6	1	30%		
7	24	9	7	8	0	33%		
8	19	6	4	7	2	47%		
	138	53	38	36	11			
		38%	28%	26%	8%			

Data Trends

% L2, L3, L4	Proficiency Rate
↑ 5%	↑ 12%

Denzel Washington School of the Arts

2021-22 NYS ELA All Students								
Test Grade	Tested Students	L1	L2	L3	L4	Proficiency Rate	% L2, L3, L4	Overall Proficiency Rate
6	29	3	2	7	17	83%	95%	79%
7	41	2	7	20	12	78%		
8	42	1	8	16	17	79%		
	112	6	17	43	46			
		5%	15%	38%	41%			

2022-23 NYS ELA All Students								
Test Grade	Tested Students	L1	L2	L3	L4	Proficiency Rate	% L2, L3, L4	Overall Proficiency Rate
6	22	2	11	3	6	41%	93%	65%
7	32	2	8	16	6	69%		
8	43	3	8	25	7	74%		
	97	7	27	44	19			
		7%	28%	45%	20%			

Data Trends

% L2, L3, L4	Proficiency Rate
-2%	-15%

Local data used to report 2021-22 data

Edward Williams School

2021-22 NYS ELA All Students								
Test Grade	Tested Students	L1	L2	L3	L4	Proficiency Rate	% L2, L3, L4	Overall Proficiency Rate
3	54	21	20	13	0	24%	49%	22%
4	48	32	10	6	0	13%		
5	49	27	15	6	1	14%		
6	54	27	7	12	8	37%		
7	41	19	13	7	2	22%		
8	30	14	11	3	2	17%		
	276	140	76	47	13			
		51%	28%	17%	5%			

2022-23 NYS ELA All Students								
Test Grade	Tested Students	L1	L2	L3	L4	Proficiency Rate	% L2, L3, L4	Overall Proficiency Rate
3	48	36	6	5	1	13%	56%	22%
4	49	11	24	10	4	29%		
5	33	17	12	3	1	12%		
6	41	18	14	8	1	22%		
7	53	21	18	11	3	26%		
8	32	9	13	10	0	31%		
	256	112	87	47	10			
		44%	34%	18%	4%			

Data Trends

% L2, L3, L4	Proficiency Rate
↑ 7%	↑ 0%

Graham School

2021-22 NYS ELA All Students								
Test Grade	Tested Students	L1	L2	L3	L4	Proficiency Rate	% L2, L3, L4	Overall Proficiency Rate
3	35	9	12	14	0	40%	62%	29%
4	47	25	11	9	2	23%		
5	52	27	19	2	4	12%		
6	45	12	11	10	12	49%		
7	48	12	19	15	2	35%		
8	31	12	14	4	1	16%		
	258	97	86	54	21			
		38%	33%	21%	8%			

2022-23 NYS ELA All Students								
Test Grade	Tested Students	L1	L2	L3	L4	Proficiency Rate	% L2, L3, L4	Overall Proficiency Rate
3	39	16	12	10	1	28%	67%	34%
4	25	8	6	5	6	44%		
5	25	7	7	7	4	44%		
6	46	18	14	11	3	30%		
7	39	12	15	7	5	31%		
8	61	17	23	11	10	34%		
	235	78	77	51	29			
		33%	33%	22%	12%			

Data Trends

% L2, L3, L4	Proficiency Rate
↑ 4%	↑ 5%

Grimes School

2021-22 NYS ELA All Students								
Test Grade	Tested Students	L1	L2	L3	L4	Proficiency Rate	% L2, L3, L4	Overall Proficiency Rate
3	57	14	29	9	5	25%	69%	28%
4	36	13	14	7	2	25%		
5	49	15	25	7	2	18%		
6	38	14	10	8	6	37%		
7	43	14	13	13	3	37%		
8	38	11	16	8	3	29%		
	261	81	107	52	21			
		31%	41%	20%	8%			

2022-23 NYS ELA All Students								
Test Grade	Tested Students	L1	L2	L3	L4	Proficiency Rate	% L2, L3, L4	Overall Proficiency Rate
3	32	7	8	11	6	53%	74%	37%
4	57	16	22	14	5	33%		
5	32	12	8	11	1	38%		
6	39	7	21	9	2	28%		
7	33	10	13	9	1	30%		
8	41	9	17	10	5	37%		
	234	61	89	64	20			
		26%	38%	27%	9%			

Data Trends

% L2, L3, L4	Proficiency Rate
↑ 5%	↑ 9%

Hamilton School

2021-22 NYS ELA All Students								
Test Grade	Tested Students	L1	L2	L3	L4	Proficiency Rate	% L2, L3, L4	Overall Proficiency Rate
3	31	10	9	11	1	39%	74%	40%
4	35	12	15	8	0	23%		
5	28	9	6	7	6	46%		
6	31	7	7	10	7	55%		
7	28	5	11	10	2	43%		
8	16	1	8	5	2	44%		
	169	44	56	51	18			
		26%	33%	30%	11%			

2022-23 NYS ELA All Students								
Test Grade	Tested Students	L1	L2	L3	L4	Proficiency Rate	% L2, L3, L4	Overall Proficiency Rate
3	35	14	9	9	3	34%	68%	42%
4	33	15	8	9	1	30%		
5	24	7	11	5	1	25%		
6	24	6	3	10	5	63%		
7	33	9	10	11	3	42%		
8	18	3	3	8	4	67%		
	167	54	44	52	17			
		32%	26%	31%	10%			

Data Trends

% L2, L3, L4	Proficiency Rate
-6%	2%

Lincoln School

2021-22 NYS ELA All Students								
Test Grade	Tested Students	L1	L2	L3	L4	Proficiency Rate	% L2, L3, L4	Overall Proficiency Rate
3	42	3	15	22	2	57%	90%	59%
4	48	5	15	17	11	58%		
5	53	9	18	14	12	49%		
6	58	8	14	16	20	62%		
7	39	1	13	11	14	64%		
8	45	3	12	16	14	67%		
	285	29	87	96	73			
		10%	31%	34%	26%			

2022-23 NYS ELA All Students								
Test Grade	Tested Students	L1	L2	L3	L4	Proficiency Rate	% L2, L3, L4	Overall Proficiency Rate
3	54	16	17	19	2	39%	84%	57%
4	36	1	9	19	7	72%		
5	43	5	13	15	10	58%		
6	53	5	12	23	13	68%		
7	56	13	17	20	6	46%		
8	27	3	4	13	7	74%		
	269	43	72	109	45			
		16%	27%	41%	17%			

Data Trends

% L2, L3, L4	Proficiency Rate
-6%	-2%

Mount Vernon Honor Academy

2021-22 NYS ELA All Students								
Test Grade	Tested Students	L1	L2	L3	L4	Proficiency Rate	% L2, L3, L4	Overall Proficiency Rate
3	29	6	13	9	1	34%	80%	41%
4	31	3	16	8	4	39%		
5	35	10	12	5	8	37%		
6	28	2	6	9	11	71%		
7	45	12	20	8	5	29%		
8	26	6	8	3	9	46%		
	194	39	75	42	38			
		20%	39%	22%	20%			

2022-23 NYS ELA All Students								
Test Grade	Tested Students	L1	L2	L3	L4	Proficiency Rate	% L2, L3, L4	Overall Proficiency Rate
3	30	3	11	9	7	53%	87%	49%
4	41	10	16	9	6	37%		
5	35	8	12	10	5	43%		
6	30	2	9	5	14	63%		
7	28	1	10	10	7	61%		
8	39	3	18	15	3	46%		
	203	27	76	58	42			
		13%	37%	29%	21%			

Data Trends

% L2, L3, L4	Proficiency Rate
↑ 7%	↑ 8%

Mount Vernon Leadership Academy

2021-22 NYS ELA All Students								
Test Grade	Tested Students	L1	L2	L3	L4	Proficiency Rate	% L2, L3, L4	Overall Proficiency Rate
3	28	4	10	14	0	50%	77%	39%
4	47	15	21	8	3	23%		
5	31	13	8	8	2	32%		
6	28	3	7	9	9	64%		
7	51	13	24	10	4	27%		
8	41	4	16	15	6	51%		
	226	52	86	64	24			
		23%	38%	28%	11%			

2022-23 NYS ELA All Students								
Test Grade	Tested Students	L1	L2	L3	L4	Proficiency Rate	% L2, L3, L4	Overall Proficiency Rate
3	43	16	5	17	5	51%	76%	43%
4	33	5	16	8	4	36%		
5	48	19	16	12	1	27%		
6	31	9	8	9	5	45%		
7	28	3	13	7	5	43%		
8	42	2	16	17	7	57%		
	225	54	74	70	27			
		24%	33%	31%	12%			

Data Trends

% L2, L3, L4	Proficiency Rate
-1%	↑ 4%

Nelson Mandela Hosea Zollicoffer School

2021-22 NYS ELA All Students								
Test Grade	Tested Students	L1	L2	L3	L4	Proficiency Rate	% L2, L3, L4	Overall Proficiency Rate
3	32	1	8	18	5	72%	80%	49%
4	38	10	11	12	5	45%		
5	29	8	12	3	6	31%		
6	33	7	9	9	8	52%		
7	29	7	9	7	6	45%		
8	35	7	11	11	6	49%		
	196	40	60	60	36			
		20%	31%	31%	18%			

2022-23 NYS ELA All Students								
Test Grade	Tested Students	L1	L2	L3	L4	Proficiency Rate	% L2, L3, L4	Overall Proficiency Rate
3	26	4	9	6	7	50%	79%	46%
4	40	4	18	13	5	45%		
5	43	15	12	12	4	37%		
6	25	7	6	6	6	48%		
7	38	6	11	20	1	55%		
8	28	6	10	5	7	43%		
	200	42	66	62	30			
		21%	33%	31%	15%			

Data Trends

% L2, L3, L4	Proficiency Rate
-1%	-3%

Pennington School

2021-22 NYS ELA All Students								
Test Grade	Tested Students	L1	L2	L3	L4	Proficiency Rate	% L2, L3, L4	Overall Proficiency Rate
3	40	[No Title]		24	4	70%	82%	50%
4	29	9	11	8	1	31%		
5	34	10	16	4	4	24%		
6	41	5	6	14	16	73%		
7	29	8	13	7	1	28%		
8	28	2	9	10	7	61%		
	201	36	65	67	33			
		18%	32%	33%	16%			

2022-23 NYS ELA All Students								
Test Grade	Tested Students	L1	L2	L3	L4	Proficiency Rate	% L2, L3, L4	Overall Proficiency Rate
3	44	13	14	14	3	39%	81%	47%
4	35	4	8	11	12	66%		
5	27	3	11	10	3	48%		
6	24	5	12	7	0	29%		
7	38	8	9	9	12	55%		
8	30	4	13	10	3	43%		
	198	37	67	61	33			
		19%	34%	31%	17%			

Data Trends

% L2, L3, L4	Proficiency Rate
-1%	-3%

Rebecca Turner School

2021-22 NYS ELA All Students								
Test Grade	Tested Students	L1	L2	L3	L4	Proficiency Rate	% L2, L3, L4	Overall Proficiency Rate
3	31	5	11	14	1	48%	82%	54%
4	37	7	8	12	10	59%		
		68	12	19	26	11		
			18%	28%	38%	16%		

2022-23 NYS ELA All Students								
Test Grade	Tested Students	L1	L2	L3	L4	Proficiency Rate	% L2, L3, L4	Overall Proficiency Rate
3	27	6	9	8	4	44%	70%	42%
4	33	12	8	10	3	39%		
5								
6								
7								
8								
		60	18	17	18	7		
			30%	28%	30%	12%		

Data Trends

% L2, L3, L4	Proficiency Rate
-12%	-12%

Traphagen School

2021-22 NYS ELA All Students								
Test Grade	Tested Students	L1	L2	L3	L4	Proficiency Rate	% L2, L3, L4	Overall Proficiency Rate
3	29	0	15	14	0	48%	87%	52%
4	23	5	8	4	6	43%		
5	31	7	12	8	4	39%		
6	26	5	4	4	13	65%		
7	25	2	10	11	2	52%		
8	17	0	4	5	8	76%		
	151	19	53	46	33			
		13%	35%	30%	22%			

2022-23 NYS ELA All Students								
Test Grade	Tested Students	L1	L2	L3	L4	Proficiency Rate	% L2, L3, L4	Overall Proficiency Rate
3	30	9	7	11	3	47%	86%	53%
4	31	2	8	18	3	68%		
5	31	5	16	8	2	32%		
6	30	4	11	10	5	50%		
7	22	2	6	6	8	64%		
8	26	1	9	10	6	62%		
	170	23	57	63	27			
		14%	34%	37%	16%			

Data Trends

% L2, L3, L4	Proficiency Rate
-1%	↑ 1%

Highlights: ELA

Lincoln School	Mount Vernon Honor Academy	Mount Vernon Leadership Academy	Nelson Mandela/Hosea Zollicoffer School	Pennington School	Rebecca Turner Elementary School	Traphagen School
Outperformed the District and NYS average in grades 3-8	Outperformed the District average and tied the NYS average in grades 3-8	Outperformed the District average in grades 3-8	Outperformed the District average in grades 3-8	Outperformed the District average in grades 3-8	Outperformed the District average in grades 3-8	Outperformed the District and NYS average in grades 3-8

Action Steps for Improvement in ELA

Foundations – K-3	Data Analysis – K-8	K-8 Literacy Rollout
<ul style="list-style-type: none"> • Year 2 of implementation - multisensory and systematic phonics, spelling, and handwriting program • Daily learning plan is 30 minutes, consisting of 3-5 activities • Activities address skills in an integrated approach and provide repetition in varied ways • For example: once students have mastered sounds in isolation, they begin to blend and segment letter sounds, leading to decoding (sounding out simple words) and encoding (spelling simple words) 	<ul style="list-style-type: none"> • Administered B.O.Y. and M.O.Y. in i-Ready (M.O.Y. in progress) <ul style="list-style-type: none"> • Will administer E.O.Y. • Data is reviewed and analyzed • Teachers use the information to make informed decisions about instruction and intervention <ul style="list-style-type: none"> • Small Group instruction • Tiers of intervention and progress monitoring (RTI) • Transitioning K and 1 students to the i-Ready platform to reduce the achievement gap prior to students entering 2nd grade • Provide targeted support to high level 1's and 2's 	<ul style="list-style-type: none"> • Literacy approach that integrates reading, writing, word study and elements of the Science of Reading • Mini-lesson <ul style="list-style-type: none"> • Teacher begins with whole group • Teacher explicitly teaches the skill/strategy • Independent Reading (independent level) • Guided Reading (instructional level) • Conferencing and Small Groups (strategy groups – multiple levels) • Share-out • Provide enrichment opportunities for students

Action Steps for Improvement in Math for 2022-23

What did it result in?

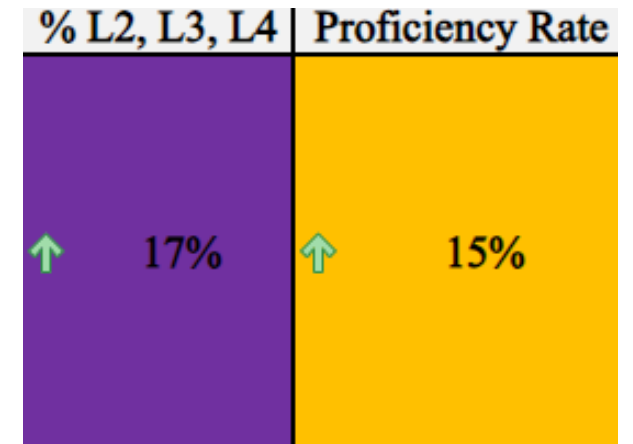
Strategy 1	Strategy 2	Strategy 3 (2024-25)
<p>Strategy 1: Analyze Data to Improve Student Achievement in Math</p> <ul style="list-style-type: none"> Analyze NYSED and common assessment math (local) data to determine if the following are needed: <ul style="list-style-type: none"> Intervention Services Regrouping based on local assessment data, lesson data and observational data Reteaching based on local assessment data, lesson data and observational evidence (via the Intervention / On Level / Advanced activities, Math Diagnosis Intervention System –MDIS, iReady pathway lessons, etc.) Differentiated instructional strategies(Fluency, Tiered questions, Emphasis on Problem Solving Methodologies -Multi-Step Word Problem using QTIPS, KNWS or STAR, Concrete/Pictorial/Abstract Methodology, Vocabulary and Writing in mathematics, etc. Analyze NYSED and common assessment math (local) data to determine if the following are needed 	<p>Strategy 2: Identify and Implement Effective Instructional Strategies Improve Student Achievement in Math</p> <ul style="list-style-type: none"> Continue to develop lessons (based on the workshop model -6 components) and assessments aligned with New Learning standards. Utilize best practices and research-based strategies in math {Fluency, Tiered questions, Emphasis on Problem Solving Methodologies -Multi-Step Word Problem using QTIPS, KNWS or STAR, Concrete/Pictorial/Abstract Methodology, Vocabulary and Writing in mathematics, etc.} <p style="text-align: center;">Summary</p> <ol style="list-style-type: none"> Coherent Lesson Design Emphasis on Problem Solving Methodologies -Multi-Step Word Problem using QTIPS, KNWS or STAR Emphasis on Concrete/Pictorial Representations during mathematics block Small group instruction 	<p>Grade 8 Math Course Offerings for 2023-2024:</p> <p>Grade 8-Math 8 (to strengthen students' foundational skills in Math in preparation for high school Regents courses)</p> <p>Grade 8-Algebra 1**-for selected students who meet criteria</p>

Mount Vernon City School District NYSED Math Grades 3-8

2021-22 NYS Math All Students								
Test Grade	Tested Students	L1	L2	L3	L4	Proficiency Rate	% L2, L3, L4	Overall Proficiency Rate
3	433	139	122	123	49	40%	50%	24%
4	451	210	138	74	29	23%		
5	447	255	101	67	24	20%		
6	460	247	115	69	29	21%		
7	414	256	104	44	10	13%		
8								
Grade 8 Algebra 1	397	182	102	88	25	28%		
	2602	1289	682	465	166			
		50%	26%	18%	6%			

2022-23 NYS Math All Students								
Test Grade	Tested Students	L1	L2	L3	L4	Proficiency Rate	% L2, L3, L4	Overall Proficiency Rate
3	456	81	153	166	56	49%	68%	39%
4	435	135	112	146	42	43%		
5	410	152	110	117	31	36%		
6	431	126	117	137	51	44%		
7	478	165	167	108	38	31%		
Grade 8 Algebra 1	495	213	124	124	34	32%		
	2705	872	783	798	252			
		32%	29%	30%	9%			

Data Trends



Benjamin Turner Middle School

2021-22 NYS Math All Students								
Test Grade	Tested Students	L1	L2	L3	L4	Proficiency Rate	% L2, L3, L4	Overall Proficiency Rate
5	33	18	9	5	1	18%	32%	12%
6	36	27	6	2	1	8%		
7	33	25	6	2	0	6%		
Grade 8 Algebra 1	39	26	7	5	1	15%		
	141	96	28	14	3			
		68%	20%	10%	2%			

2022-23 NYS Math All Students								
Test Grade	Tested Students	L1	L2	L3	L4	Proficiency Rate	% L2, L3, L4	Overall Proficiency Rate
5	31	9	10	7	5	39%	55%	28%
6	45	18	10	14	3	38%		
7	49	22	17	8	2	20%		
Grade 8 Algebra 1	47	29	8	8	2	21%		
	172	78	45	37	12			
		45%	26%	22%	7%			

Data Trends

% L2, L3, L4	Proficiency Rate
↑ 23%	↑ 16%

Cecil H. Parker School

2021-22 NYS Math All Students								
Test Grade	Tested Students	L1	L2	L3	L4	Proficiency Rate	% L2, L3, L4	Overall Proficiency Rate
3	22	10	9	3	0	14%	35%	9%
4	31	19	8	4	0	13%		
5	26	19	5	1	1	8%		
6	46	34	9	3	0	7%		
7	20	12	6	2	0	10%		
Grade 8 Algebra 1	25	17	7	1	0	4%		
	170	111	44	14	1			
		65%	26%	8%	1%			

2022-23 NYS Math All Students								
Test Grade	Tested Students	L1	L2	L3	L4	Proficiency Rate	% L2, L3, L4	Overall Proficiency Rate
3	35	6	13	12	4	46%	53%	26%
4	15	6	6	3	0	20%		
5	24	13	7	3	1	17%		
6	23	15	3	5	0	22%		
7	23	14	6	3	0	13%		
Grade 8 Algebra 1	17	10	2	3	2	29%		
	137	64	37	29	7			
		47%	27%	21%	5%			

Data Trends

% L2, L3, L4	Proficiency Rate
↑ 19%	↑ 17%

Denzel Washington School of the Arts

2021-22 NYS Math All Students								
Test Grade	Tested Students	L1	L2	L3	L4	Proficiency Rate	% L2, L3, L4	Overall Proficiency Rate
							58%	25%
6	28	10	5	8	5	46%		
7	39	13	13	11	2	33%		
Grade 8 Algebra 1	49	26	20	3	0	6%		
	116	49	38	22	7			
		42%	33%	19%	6%			

2022-23 NYS Math All Students								
Test Grade	Tested Students	L1	L2	L3	L4	Proficiency Rate	% L2, L3, L4	Overall Proficiency Rate
							85%	55%
6	20	3	3	10	4	70%		
7	31	4	12	9	6	48%		
Grade 8 Algebra 1	45	7	14	20	4	53%		
	96	14	29	39	14			
		15%	30%	41%	15%			

Data Trends

% L2, L3, L4	Proficiency Rate
↑ 28%	↑ 30%

Local data used to report 2021-22 data

Edward Williams School

2021-22 NYS Math All Students								
Test Grade	Tested Students	L1	L2	L3	L4	Proficiency Rate	% L2, L3, L4	Overall Proficiency Rate
3	54	25	20	6	3	17%	39%	14%
4	47	23	16	6	2	17%		
5	49	34	9	3	3	12%		
6	52	40	8	3	1	8%		
7	40	27	11	2	0	5%		
Grade 8 Algebra 1	30	17	5	5	3	27%		
	272	166	69	25	12			
		61%	25%	9%	4%			

Data Trends

% L2, L3, L4	Proficiency Rate
16%	8%

2022-23 NYS Math All Students								
Test Grade	Tested Students	L1	L2	L3	L4	Proficiency Rate	% L2, L3, L4	Overall Proficiency Rate
3	48	19	19	8	2	21%	55%	22%
4	50	23	16	9	2	22%		
5	33	19	6	6	2	24%		
6	41	14	17	8	2	24%		
7	54	23	19	7	5	22%		
Grade 8 Algebra 1	33	18	8	7	0	21%		
	259	116	85	45	13			
		45%	33%	17%	5%			

Graham School

2021-22 NYS Math All Students								
Test Grade	Tested Students	L1	L2	L3	L4	Proficiency Rate	L2, L3, L4	Overall Proficiency Rate
3	37	21	8	6	2	22%	33%	13%
4	49	32	11	6	0	12%		
5	52	39	7	6	0	12%		
6	45	30	11	3	1	9%		
7	47	34	6	5	2	15%		
Grade 8 Algebra 1	34	20	11	3	0	9%		
	264	176	54	29	5			
		67%	20%	11%	2%			

2022-23 NYS Math All Students								
Test Grade	Tested Students	L1	L2	L3	L4	Proficiency Rate	L2, L3, L4	Overall Proficiency Rate
3	38	6	19	12	1	34%	53%	26%
4	25	10	4	8	3	44%		
5	26	8	6	9	3	46%		
6	46	27	11	7	1	17%		
7	38	22	11	5	0	13%		
Grade 8 Algebra 1	62	38	11	9	4	21%		
	235	111	62	50	12			
		47%	26%	21%	5%			

Data Trends

% L2, L3, L4	Proficiency Rate
↑ 19%	↑ 13%

Grimes School

2021-22 NYS Math All Students								
Test Grade	Tested Students	L1	L2	L3	L4	Proficiency Rate	% L2, L3, L4	Overall Proficiency Rate
3	58	23	16	14	5	33%	44%	18%
4	35	22	8	4	1	14%		
5	50	32	11	6	1	14%		
6	39	20	10	7	2	23%		
7	42	27	9	5	1	14%		
Grade 8 Algebra 1	37	22	13	2	0	5%		
	261	146	67	38	10			
		56%	26%	15%	4%			

2022-23 NYS Math All Students								
Test Grade	Tested Students	L1	L2	L3	L4	Proficiency Rate	% L2, L3, L4	Overall Proficiency Rate
3	32	1	12	10	9	59%	66%	36%
4	57	15	14	25	3	49%		
5	35	9	8	12	6	51%		
6	40	10	19	11	0	28%		
7	34	16	13	4	1	15%		
Grade 8 Algebra 1	41	30	8	3	0	7%		
	239	81	74	65	19			
		34%	31%	27%	8%			

Data Trends

% L2, L3, L4	Proficiency Rate
↑ 22%	↑ 18%

Hamilton School

2021-22 NYS Math All Students								
Test Grade	Tested Students	L1	L2	L3	L4	Proficiency Rate	% L2, L3, L4	Overall Proficiency Rate
3	30	17	6	5	2	23%	47%	22%
4	35	23	11	1	0	3%		
5	25	8	7	9	1	40%		
6	24	12	6	4	2	25%		
7	21	10	6	5	0	24%		
Grade 8 Algebra 1	17	10	3	3	1	24%		
	152	80	39	27	6			
		53%	26%	18%	4%			

2022-23 NYS Math All Students								
Test Grade	Tested Students	L1	L2	L3	L4	Proficiency Rate	% L2, L3, L4	Overall Proficiency Rate
3	39	10	12	14	3	44%	67%	42%
4	34	20	7	6	1	21%		
5	28	6	10	11	1	43%		
6	24	2	3	12	7	79%		
7	30	12	7	10	1	37%		
Grade 8 Algebra 1	30	11	8	8	3	37%		
	185	61	47	61	16			
		33%	25%	33%	9%			

Data Trends

% L2, L3, L4	Proficiency Rate
↑ 20%	↑ 20%

Lincoln School

2021-22 NYS Math All Students								
Test Grade	Tested Students	L1	L2	L3	L4	Proficiency Rate	% L2, L3, L4	Overall Proficiency Rate
3	42	6	9	14	13	64%	66%	38%
4	48	7	13	17	11	58%		
5	53	22	14	12	5	32%		
6	58	28	21	7	2	16%		
7	29	17	7	3	2	17%		
Grade 8 Algebra 1	59	19	17	16	7	39%		
	289	99	81	69	40			
		34%	28%	24%	14%			

2022-23 NYS Math All Students								
Test Grade	Tested Students	L1	L2	L3	L4	Proficiency Rate	% L2, L3, L4	Overall Proficiency Rate
3	55	9	17	20	9	53%	79%	44%
4	39	3	8	16	12	72%		
5	40	6	16	17	1	45%		
6	53	7	19	23	4	51%		
7	57	20	29	8	0	14%		
Grade 8 Algebra 1	43	14	13	11	5	37%		
	287	59	102	95	31			
		21%	36%	33%	11%			

Data Trends

% L2, L3, L4	Proficiency Rate
↑ 14%	↑ 6%

Mount Vernon Honor Academy

2021-22 NYS Math All Students								
Test Grade	Tested Students	L1	L2	L3	L4	Proficiency Rate	% L2, L3, L4	Overall Proficiency Rate
3	29	12	5	10	2	41%	58%	36%
4	31	9	12	7	3	32%		
5	35	20	6	6	3	26%		
6	27	6	5	11	5	59%		
7	40	25	9	5	1	15%		
Grade 8 Algebra 1	26	7	4	12	3	58%		
	188	79	41	51	17			
		42%	22%	27%	9%			

2022-23 NYS Math All Students								
Test Grade	Tested Students	L1	L2	L3	L4	Proficiency Rate	% L2, L3, L4	Overall Proficiency Rate
3	30	5	2	18	5	77%	74%	49%
4	41	14	9	12	6	44%		
5	35	13	10	10	2	34%		
6	29	4	8	10	7	59%		
7	28	5	8	7	8	54%		
Grade 8 Algebra 1	39	11	14	12	2	36%		
	202	52	51	69	30			
		26%	25%	34%	15%			

Data Trends

% L2, L3, L4	Proficiency Rate
↑ 16%	↑ 13%

Mount Vernon Leadership Academy

2021-22 NYS Math All Students								
Test Grade	Tested Students	L1	L2	L3	L4	Proficiency Rate	% L2, L3, L4	Overall Proficiency Rate
3	27	3	7	15	2	63%	50%	24%
4	46	23	15	5	3	17%		
5	32	21	4	5	2	22%		
6	30	9	9	9	3	40%		
7	52	37	8	6	1	13%		
Grade 8 Algebra 1	42	21	17	4	0	10%		
	229	114	60	44	11			
		50%	26%	19%	5%			

2022-23 NYS Math All Students								
Test Grade	Tested Students	L1	L2	L3	L4	Proficiency Rate	% L2, L3, L4	Overall Proficiency Rate
3	45	8	19	15	3	40%	64%	36%
4	34	16	11	7	0	21%		
5	52	26	10	15	1	31%		
6	30	8	6	11	5	53%		
7	30	5	5	17	3	67%		
Grade 8 Algebra 1	41	20	14	6	1	17%		
	232	83	65	71	13			
		36%	28%	31%	6%			

Data Trends

% L2, L3, L4	Proficiency Rate
↑ 14%	↑ 12%

Nelson Mandela Hosea Zollicoffer School

2021-22 NYS Math All Students								
Test Grade	Tested Students	L1	L2	L3	L4	Proficiency Rate	% L2, L3, L4	Overall Proficiency Rate
3	32	2	9	15	6	66%	62%	31%
4	38	17	16	4	1	13%		
5	28	11	9	6	2	29%		
6	33	19	8	3	3	18%		
7	30	14	12	3	1	13%		
Grade 8 Algebra 1	38	13	8	15	2	45%		
	199	76	62	46	15			
		38%	31%	23%	8%			

2022-23 NYS Math All Students								
Test Grade	Tested Students	L1	L2	L3	L4	Proficiency Rate	% L2, L3, L4	Overall Proficiency Rate
3	26	1	5	15	5	77%	72%	47%
4	39	11	12	12	4	41%		
5	45	26	8	10	1	24%		
6	23	5	4	6	8	61%		
7	36	4	17	13	2	42%		
Grade 8 Algebra 1	34	10	5	17	2	56%		
	203	57	51	73	22			
		28%	25%	36%	11%			

Data Trends

% L2, L3, L4	Proficiency Rate
↑ 10%	↑ 16%

Pennington School

2021-22 NYS Math All Students								
Test Grade	Tested Students	L1	L2	L3	L4	Proficiency Rate	% L2, L3, L4	Overall Proficiency Rate
3	39	5	15	13	6	49%	58%	26%
4	30	16	9	5	0	17%		
5	32	19	8	3	2	16%		
6	40	17	15	7	1	20%		
7	29	19	8	1	1	7%		
Grade 8 Algebra 1	29	8	8	12	1	45%		
	199	84	63	41	11			
		42%	32%	21%	6%			

2022-23 NYS Math All Students								
Test Grade	Tested Students	L1	L2	L3	L4	Proficiency Rate	% L2, L3, L4	Overall Proficiency Rate
3	44	7	14	15	8	52%	77%	43%
4	34	3	6	19	6	74%		
5	27	4	10	9	4	48%		
6	26	9	9	7	1	31%		
7	39	11	18	9	1	26%		
Grade 8 Algebra 1	29	11	12	6	0	21%		
	199	45	69	65	20			
		23%	35%	33%	10%			

Data Trends

% L2, L3, L4	Proficiency Rate
↑ 20%	↑ 17%

Rebecca Turner Elementary School

2021-22 NYS Math All Students								
Test Grade	Tested Students	L1	L2	L3	L4	Proficiency Rate	L2, L3, L4	Overall Proficiency Rate
3	32	11	9	9	3	38%	69%	37%
4	36	10	13	6	7	36%		
		68	21	22	15	10		
			31%	32%	22%	15%		

2022-23 NYS Math All Students								
Test Grade	Tested Students	L1	L2	L3	L4	Proficiency Rate	L2, L3, L4	Overall Proficiency Rate
3	30	5	9	14	2	53%	76%	47%
4	32	10	9	12	1	41%		
		62	15	18	26	3		
			24%	29%	42%	5%		

Data Trends

% L2, L3, L4	Proficiency Rate
↑ 7%	↑ 10%

Traphagen School

2021-22 NYS Math All Students								
Test Grade	Tested Students	L1	L2	L3	L4	Proficiency Rate	% L2, L3, L4	Overall Proficiency Rate
3	30	4	8	13	5	60%	78%	47%
4	24	8	6	9	1	42%		
5	32	12	12	5	3	25%		
6	26	2	7	9	8	65%		
7	26	6	15	4	1	19%		
Grade 8 Algebra 1	20	2	2	9	7	80%		
	158	34	50	49	25			
		22%	32%	31%	16%			

2022-23 NYS Math All Students								
Test Grade	Tested Students	L1	L2	L3	L4	Proficiency Rate	% L2, L3, L4	Overall Proficiency Rate
3	30	2	12	11	5	53%	87%	60%
4	32	3	9	16	4	63%		
5	30	10	9	7	4	37%		
6	30	3	5	13	9	73%		
7	23	2	5	7	9	70%		
Grade 8 Algebra 1	34	4	7	14	9	68%		
	179	24	47	68	40			
		13%	26%	38%	22%			

Data Trends

% L2, L3, L4	Proficiency Rate
↑ 8%	↑ 13%

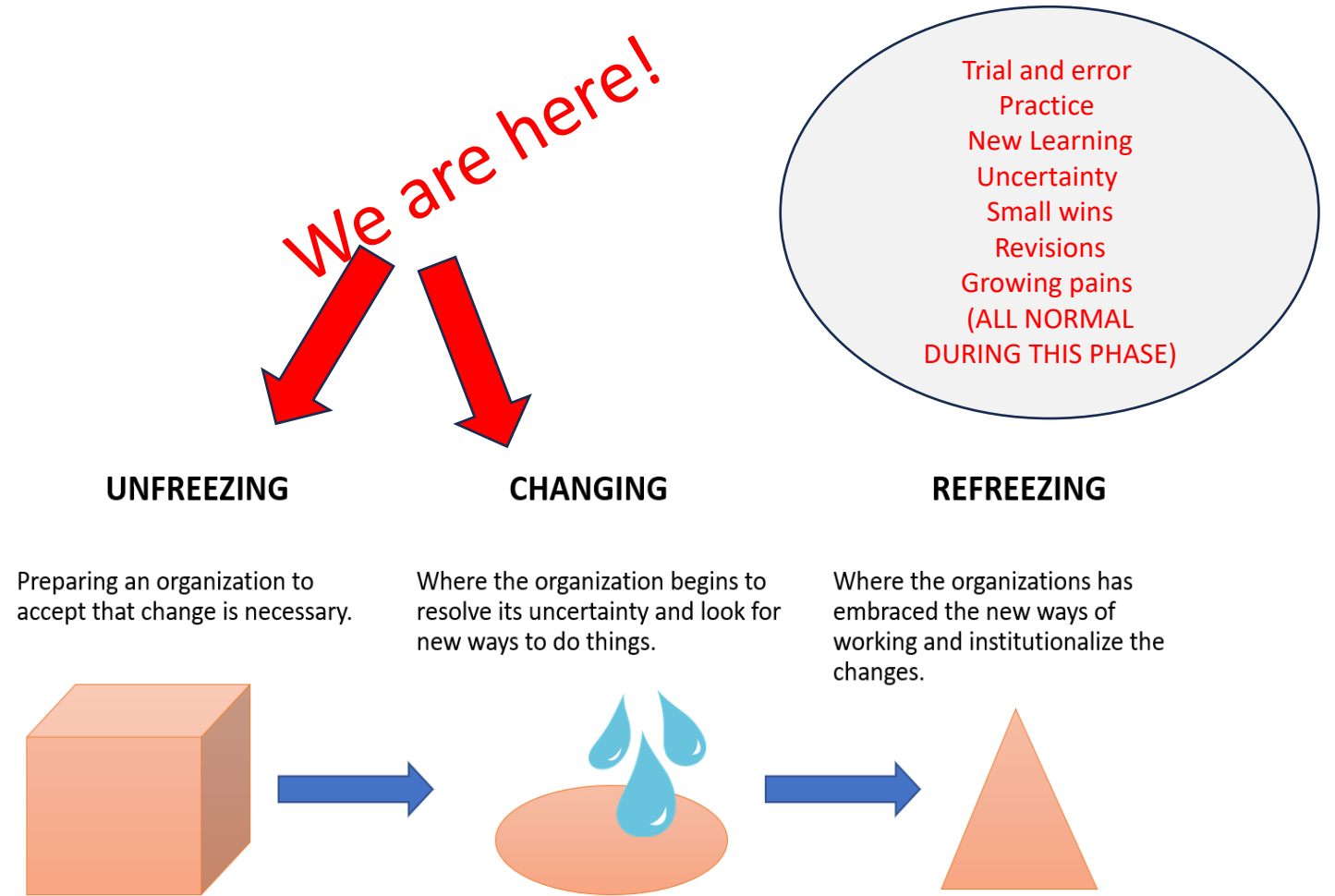
Highlights: Math

All schools are to be commended for their significant increases in student proficiency rates in Math for the 2022-23 school year!

2023-24 Action Steps for Improvement in Math

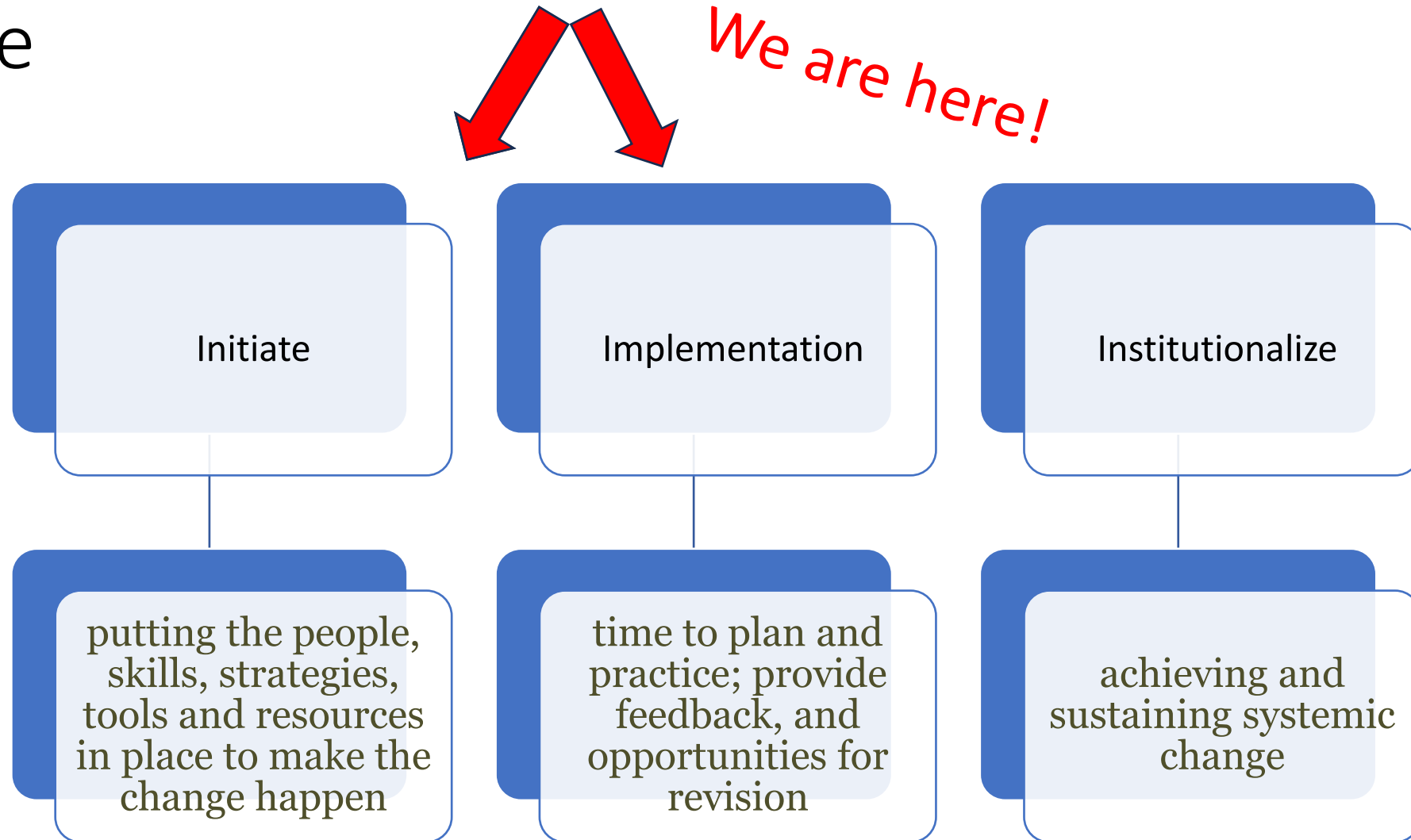
Strategy 1	Strategy 2	Strategy 3
<p>STRATEGY 1: ANALYZE DATA TO IMPROVE STUDENT ACHIEVEMENT IN MATHEMATICS</p> <ul style="list-style-type: none"> Analyze NYSED and common assessment math (local) data to determine if of the following are needed: <ul style="list-style-type: none"> Intervention Services / Small Group Instruction Regrouping Reteaching Differentiated instructional strategies <p>Utilize NYSED and common assessment math (local) data to identify student strengths and weaknesses to adapt curriculum and instruction as appropriate.</p>	<p>STRATEGY 2: IDENTIFY AND IMPLEMENT EFFECTIVE INSTRUCTIONAL STRATEGIES TO IMPROVE STUDENT ACHIEVEMENT IN MATHEMATICS</p> <ul style="list-style-type: none"> Continue to develop lessons (based on the workshop model) and assessments aligned with New Learning standards. Utilize best practices and research-based strategies in math {Fluency, Emphasis on Problem Solving Methodologies - Multi-Step Word Problem using QTIPS, KNWS or STAR, Concrete/Pictorial/Abstract Methodology, Vocabulary and Writing in mathematics} Utilize technology for instructional purposes. (i-Ready, Mathematics tools) Increase professional development (content) and common planning time for teachers Increase tutoring and other focused supplemental instruction Provide on-site support for the math teachers 	<p>STRATEGY 3: COHERENT LESSON DESIGN</p> <ul style="list-style-type: none"> Designing coherent instruction is the heart of planning, reflecting the teacher’s knowledge of the content and the students in the class, the intended outcomes of instruction, and the available resources. Such planning requires that educators have a clear understanding of the state, district, and school expectations for student learning, and the skill to translate these into a coherent plan.

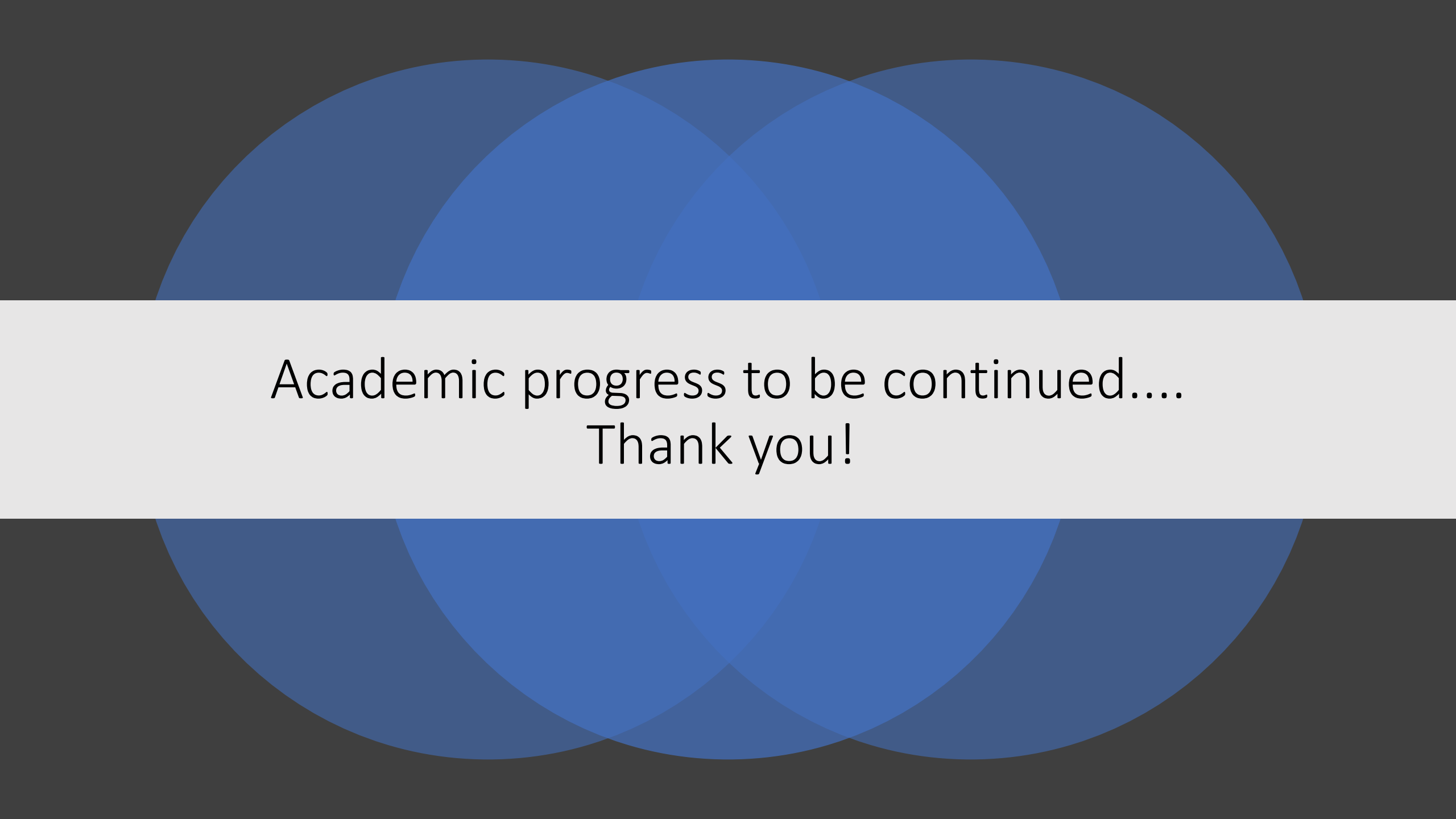
CHANGE AND THE IMPORTANCE OF CHANGE



Kurt Lewin's Change Theory

Michael Fullan's Process of Change





Academic progress to be continued....
Thank you!