



# South Whidbey School District

Design Steering  
Committee

Meeting #1



12.04.2023

**INTEGRUS**  
A COLLABORATION OF YGH & INTEGRUS ARCHITECTURE



# AGENDA

- **Welcome & Introductions**
- **Committee Role & Responsibility**
- **Efforts to Date**
- **Next Steps**



## Land and People's Acknowledgement

South Whidbey School District would like to begin by acknowledging that we gather on the ancestral homelands, originally known as Tscha-kole-chy in Lushootseed, of the Coastal Salish Peoples, on the lands of the lower sqaj̓ətabš (Skagit), dx<sup>w</sup>lilap (Tulalip), swədəbš (Swinomish), sduhubš (Snohomish), stulək<sup>w</sup>abš (Stillaguamish), and suq<sup>w</sup>abš (Suquamish), who have lived in the Salish Sea basin since time immemorial and have hunted, fished, gathered, and taken care of these lands. We respect their sovereignty, their right to self-determination, and we honor their sacred spiritual connection with the land and water. Please join me in expressing our deepest respect and gratitude to the indigenous people of this territory and for their enduring care and protection of the land in which we currently occupy and share through the Treaty of Point Elliott signed by 82 tribes in Múckl-te-óh (Mukilteo) on January 22, 1855.

## WHO WE ARE

- **Vision:** Every South Whidbey School District Student is a lifelong learner who is multi-culturally engaged, literate, and an active community member able to meet the challenges of our global society.
- **Mission:** In collaboration with our community, every student will be supported to be a resilient, innovative, compassionate, and productive graduate prepared for a diverse and dynamic world.
- **Values:** Accountability, Collaboration, Communication, Compassion, Equity, Empathy, Integrity, Resilience, Respect and Responsibility
- **Annual Goal:** Demonstrate foresight and agility to make best use of our district assets (land, facilities, people, money, institutional knowledge, and time).

## WHO WE ARE



# 2023 BOND

# YOU ARE CRITICAL TO THE PROCESS



On November 7, 2023, there will be a 2023 South Whidbey School District Bond Proposal on the Island County Special Election Ballot. The cost of the bond would increase the local tax rate by \$.70/\$1000.

Planned projects for the 2023 South Whidbey School District Capital Bond are:



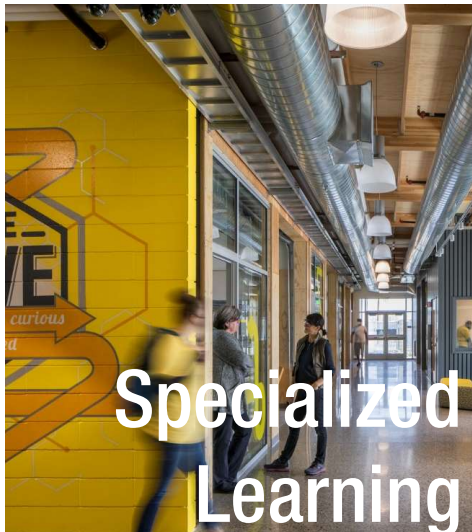
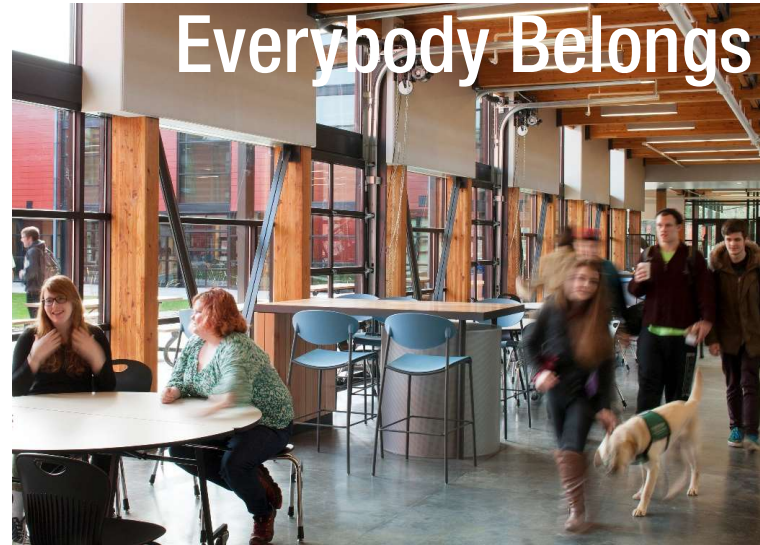
# EXPERIENCE

**INTEGRUS**  
A COLLABORATION OF YGH & INTEGRUS ARCHITECTURE





## DESIGN APPROACH





# GET COMFORTABLE



Introduce yourself and group you represent.  
Then, for fun, share 2 things about yourself, *one false*.



## Expectations

- Represent the community
- Provide input that guides the process
- Test the approach that's been identified by the Bond
- Identify what information is needed to guide the process.
- Make a recommendation to the school board



# GUIDING PRINCIPLES

## 21ST CENTURY LEARNING ENVIRONMENT

Learning happens everywhere.



Modernizations throughout to improve student and community experience, perception, and pride. Re-envisioning existing indoor and outdoor spaces to better serve young learners and expanding usable outdoor space.

## WELCOMING & IDENTITY

Create a welcoming identity.



Refresh school appearance, articulate entries, and enhance spaces of pride that invite students and community in for learning and gathering. Create distinct identities for the middle school and high school under one roof.

## INCLUSIVE ENVIRONMENTS

All environments are inclusive.



Improve ADA compliance and access to inclusive restrooms to support all students. Add inclusive and covered play areas to provide a vibrant and engaging outdoor experience for all and to support athletics and community use.

## CLASSROOMS FOR TODAY'S LEARNING

Set the stage for quality learning.



Update classrooms to improve student learning experience and integrate the latest technology. Creating classrooms that are age appropriate and supportive of multi-modal learning to enhance success of all our learners.

## WAYFINDING & SAFETY

Navigating safely & with ease.



Improve flow outside and inside the schools and enhance safety at entrances and perimeters for a better student and community experience during and after school hours.

## OPERATIONS & MAINTENANCE

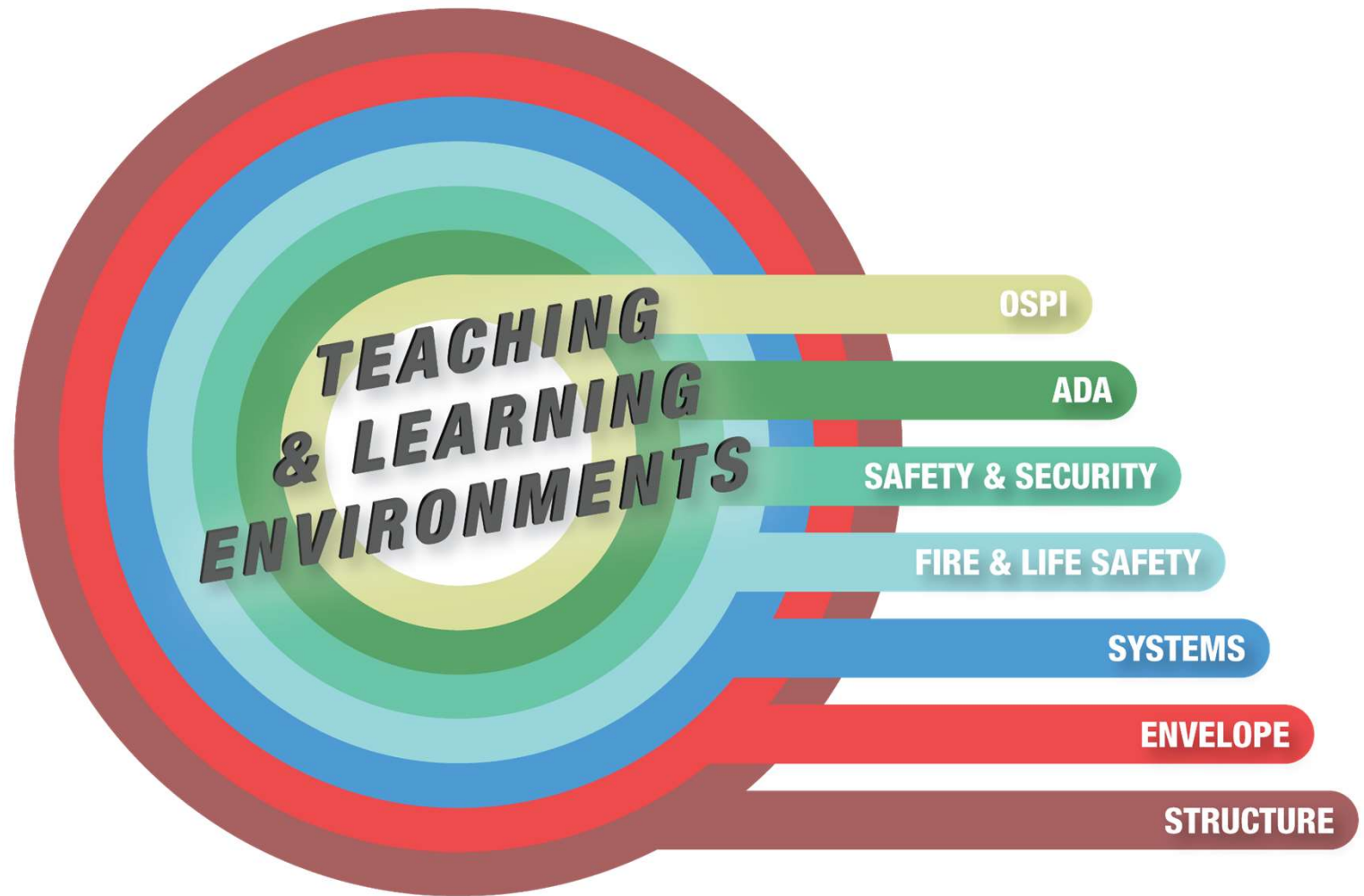
Go clean and green.



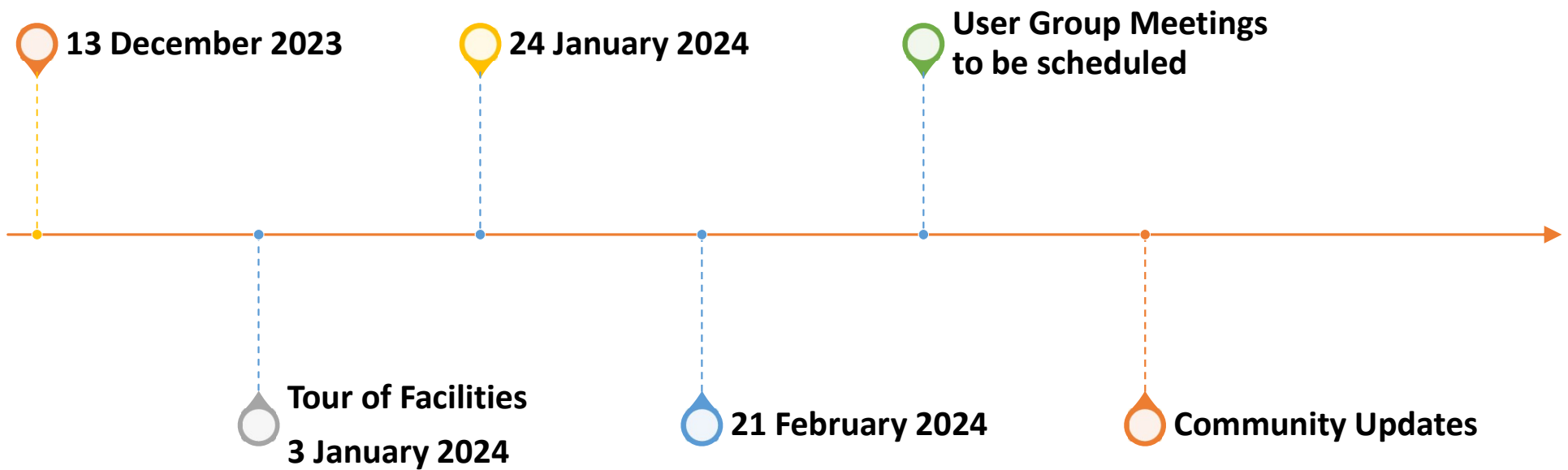
Upgrade mechanical and electrical infrastructure for reduced environmental impact, improve performance, reduce maintenance costs, and increase student comfort and wellness.



## LIFE EXPECTANCY OF A BUILDING



## SCHEDULE





## EFFORTS TO DATE

---



# THE FACILITIES

Reflecting on Building Life

## ACTIVITY

Add 2-3 post-its to the timeline

Note Personal milestones

– for example

Retirement date

Child's graduation

Birthdate

Etc.





# EXISTING CONDITIONS – ELEMENTARY NORTH

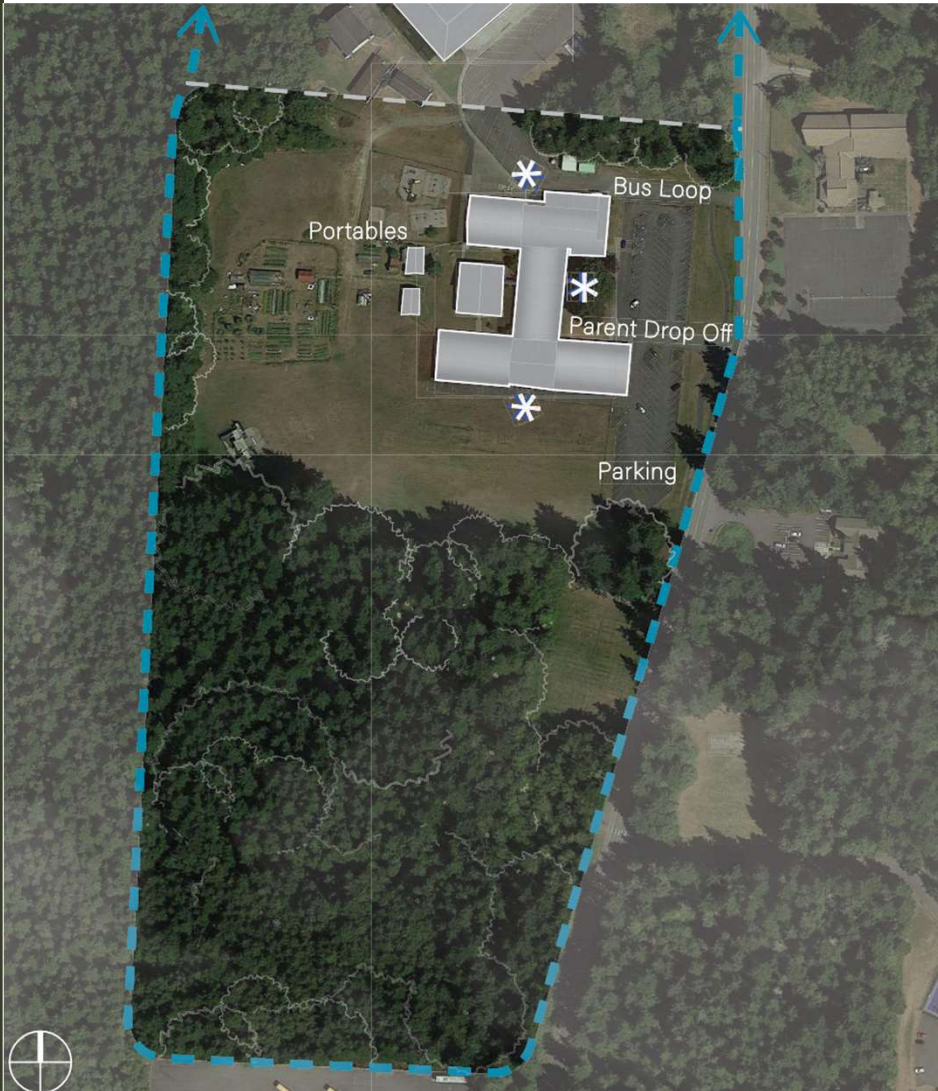


- Built in 1988 (36 years old)
- General deterioration of finishes
- Windows systems are failing
- Needs select systems replacements

Total	Yellow
Site Improvements	Green
Roadways	Green
Parking Lots	Green
Pedestrian Plazas & Walkways	Green
Athletic, Recreational and Playfield	Yellow
Site Development	Green
Landscaping	Green
Liquid and Gas Site Utilities	Green
Electrical Site Improvements	Red

Legend	
Dark Green	Excellent
Light Green	Good
Yellow	Fair
Red	Poor
Dark Purple	Unsatisfactory

## EXISTING CONDITIONS – SOUTH CAMPUS



- Built in 1969 with a 1996 remodel & addition (28 / 55 yrs old)
- General deterioration of finishes
- Not all exterior walls are insulated
- Has single pane glazing throughout original buildings
- Sanitary sewer lines are prone to backup

Total	Fair
Site Improvements	Good
Roadways	Good
Parking Lots	Good
Pedestrian Plazas & Walkways	Fair
Athletic, Recreational and Playfield	Fair
Site Development	Good
Landscaping	Good
Liquid and Gas Site Utilities	Fair
Electrical Site Improvements	Poor

Legend	
Excellent	Good
Fair	Poor
Unsatisfactory	



## EXISTING CONDITIONS – MIDDLE & HIGH SCHOOL



- Built in 1989 with a 1997 remodel & addition (35 / 27 yrs old)
- General deterioration of finishes
- EFIS not an adequate building material for this climate
- Roof leaks
- Building systems need replacement
- Fields and grandstands need updates

Total	Yellow
Site Improvements	Red
Roadways	Yellow
Parking Lots	Yellow
Pedestrian Plazas & Walkways	Red
Athletic, Recreational and Playfield	Red
Site Development	Red
Landscaping	Yellow
Liquid and Gas Site Utilities	Green
Electrical Site Improvements	Red

Legend	
Dark Green	Excellent
Light Green	Good
Yellow	Fair
Red	Poor
Dark Red	Unsatisfactory

## EXISTING CONDITIONS – TRANSPORTATION

- Built in 1996 (28 yrs old)
- General deterioration of finishes
- Moss growth and rust on exterior walls
- Gutter and downs spouts leak
- HVAC distribution is inadequate

Total	Yellow
Site Improvements	Yellow
Roadways	Yellow
Parking Lots	Green
Pedestrian Plazas & Walkways	Green
Athletic, Recreational and Playfield	White
Site Development	Green
Landscaping	Green
Liquid and Gas Site Utilities	Green
Electrical Site Improvements	Red

Legend	
Dark Green	Excellent
Light Green	Good
Yellow	Fair
Red	Poor
Dark Red	Unsatisfactory



# OVERALL CONDITION ASSESSMENT



Elementary - North Campus			
	Main Building	Covered Play - North	Covered Play - South
Structure	Good	Good	Good
Envelope	Poor	Fair	Fair
Interiors	Fair	Fair	Fair
Mechanical	Fair	Fair	Fair
Electrical	Fair	Fair	Fair
FF&E	Fair	Good	Fair

Elementary - South Campus						
A Pod	B Pod	C Pod	D Pod	E Pod	F Pod	Playshed
Fair	Fair	Fair	Fair	Fair	Good	Fair
Poor	Poor	Poor	Poor	Poor	Good	Poor
Fair	Poor	Poor	Fair	Fair	Good	Fair
Poor	Poor	Poor	Poor	Poor	Fair	Fair
Poor	Poor	Poor	Poor	Poor	Fair	Fair
Fair	Fair	Fair	Fair	Fair	Fair	Fair

High School / Middle School	
Main Building	1997 Addition
Fair	Fair
Poor	Poor
Poor	Poor
Poor	Fair
Poor	Poor
Poor	Poor
Poor	Poor

Transportation		
Main Building	Bus Wash	Fueling Station
Good	Good	Good
Fair	Fair	Fair
Fair	Fair	Fair
Fair	Good	Good
Fair	Fair	Fair
Poor	Good	Good

## Legend

Excellent
Good
Fair
Poor
Unsatisfactory

# PROPOSED MIDDLE & HIGH SCHOOL SITE PLAN



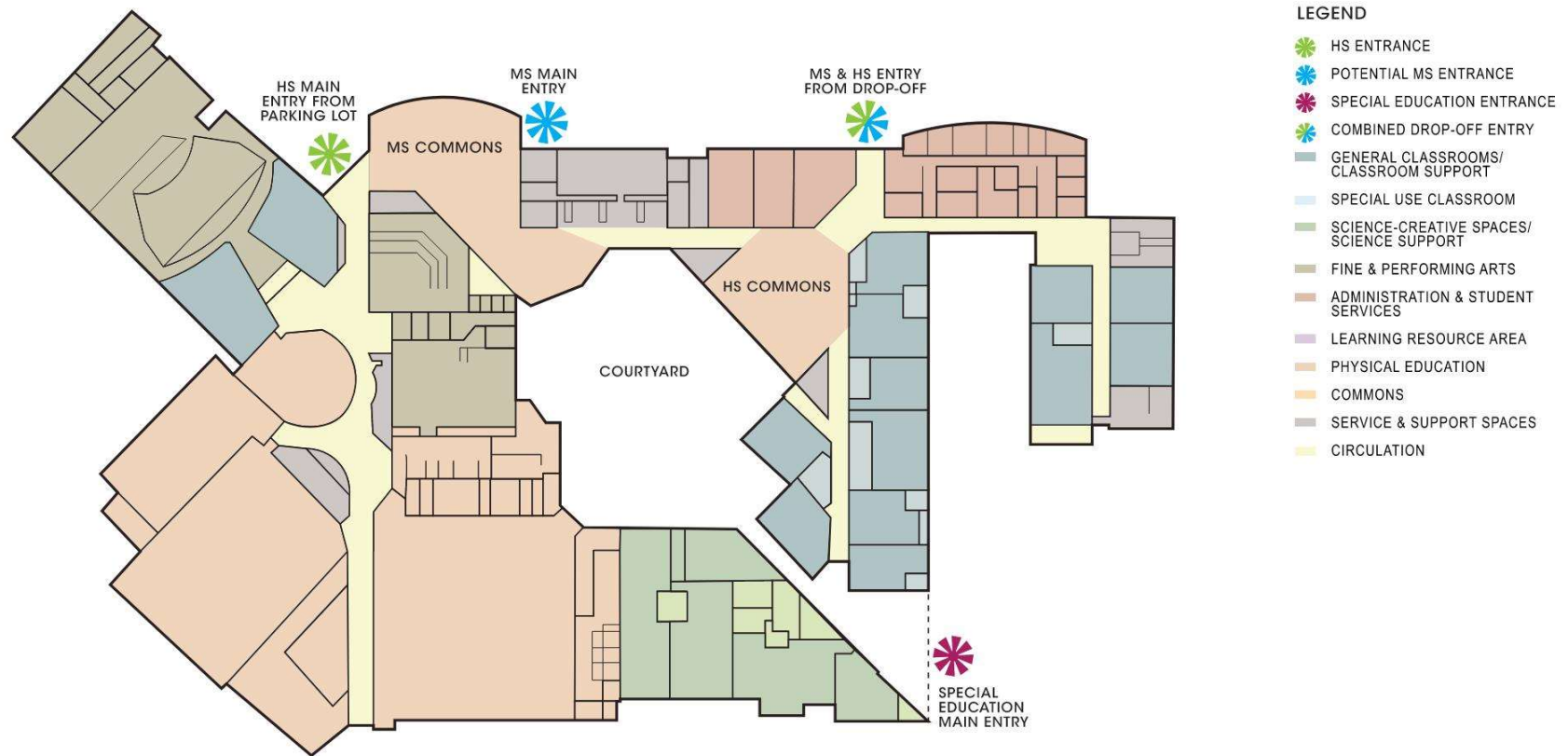
## LEGEND

- HIGH SCHOOL PARKING
- VISITOR PARKING & PARENT DROP-OFF
- BUS LOOP
- HIGH SCHOOL MAIN ENTRY
- MIDDLE SCHOOL MAIN ENTRY
- SPECIAL EDUCATION MAIN ENTRY
- EXISTING COMMUNITY GARDEN
- STORAGE STRUCTURE
- COVERED CANOPIES
- ① WIDEN & ADD MEDIAN AT RIGHT OF WAY
- ② OPERABLE TRAFFIC GATE
- ③ COMMUNITY GARDEN
- ④ BUS PARKING
- ⑤ NEW ENTRY CANOPIES
- ⑥ LEVEL OUT COURTYARD & ADD CANOPY OFF NEW COMMONS
- ⑦ SECURE ENTRY -- FENCE & GATE
- ⑧ COVERED OUTDOOR PLAY OVER EXISTING BASKETBALL COURT
- ⑨ STORAGE STRUCTURE

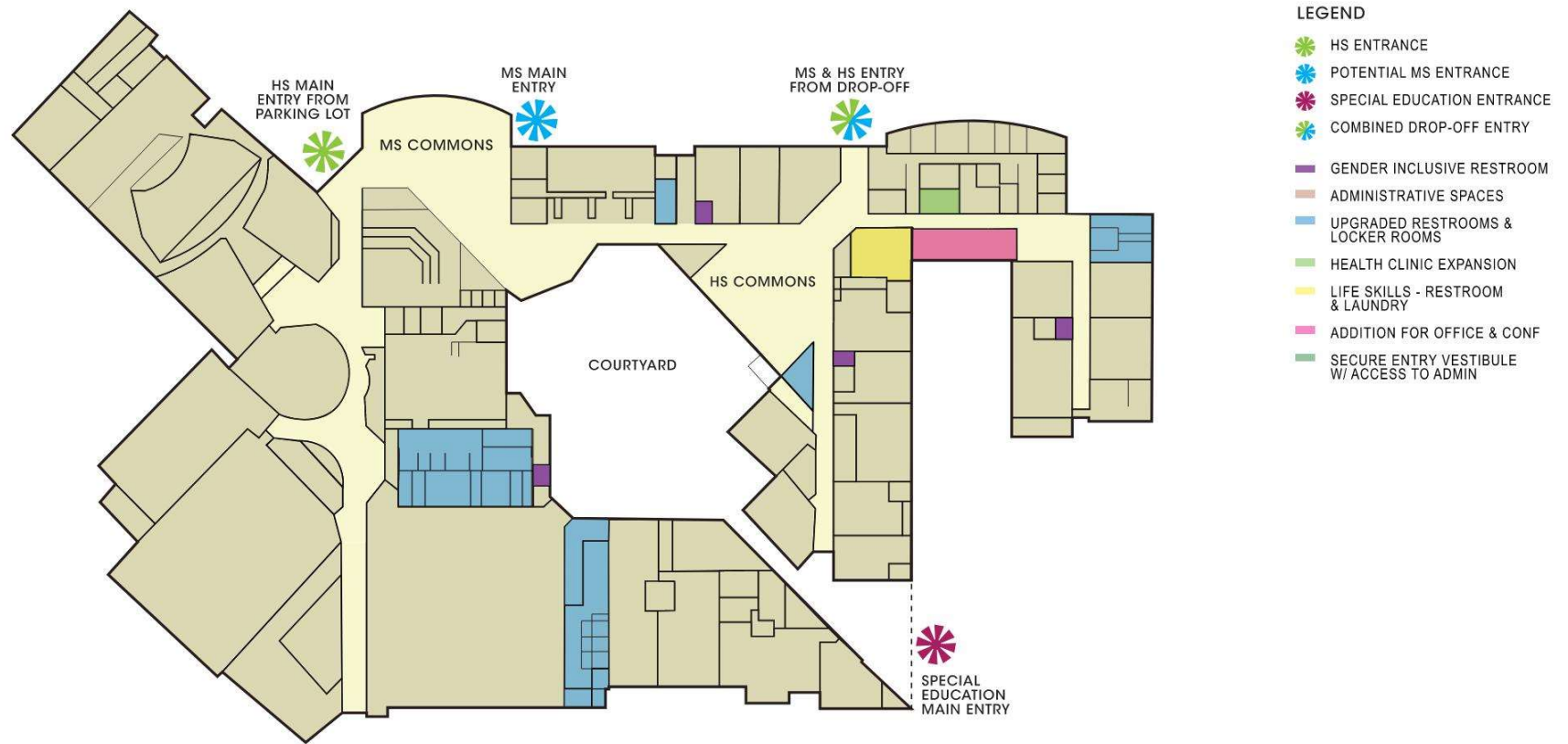
SITE PLAN ⊕N



## level 1 program floor plan

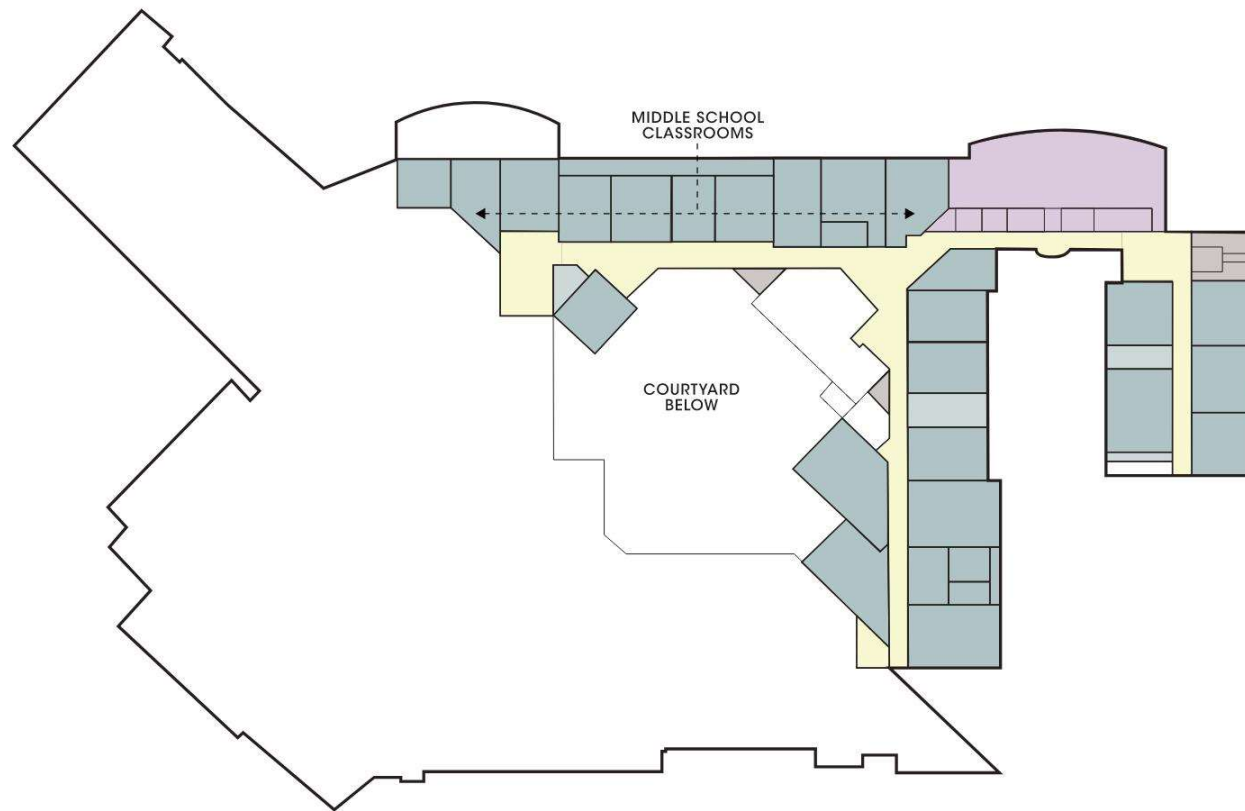


# level 1 scope floor plan





# level 2 program floor plan



## LEGEND

- HS ENTRANCE
- POTENTIAL MS ENTRANCE
- SPECIAL EDUCATION ENTRANCE
- COMBINED DROP-OFF ENTRY
- GENERAL CLASSROOMS/ CLASSROOM SUPPORT
- SPECIAL USE CLASSROOM
- SCIENCE-CREATIVE SPACES/ SCIENCE SUPPORT
- FINE & PERFORMING ARTS
- ADMINISTRATION & STUDENT SERVICES
- LEARNING RESOURCE AREA
- PHYSICAL EDUCATION
- COMMONS
- SERVICE & SUPPORT SPACES
- CIRCULATION

## level 2 scope floor plan

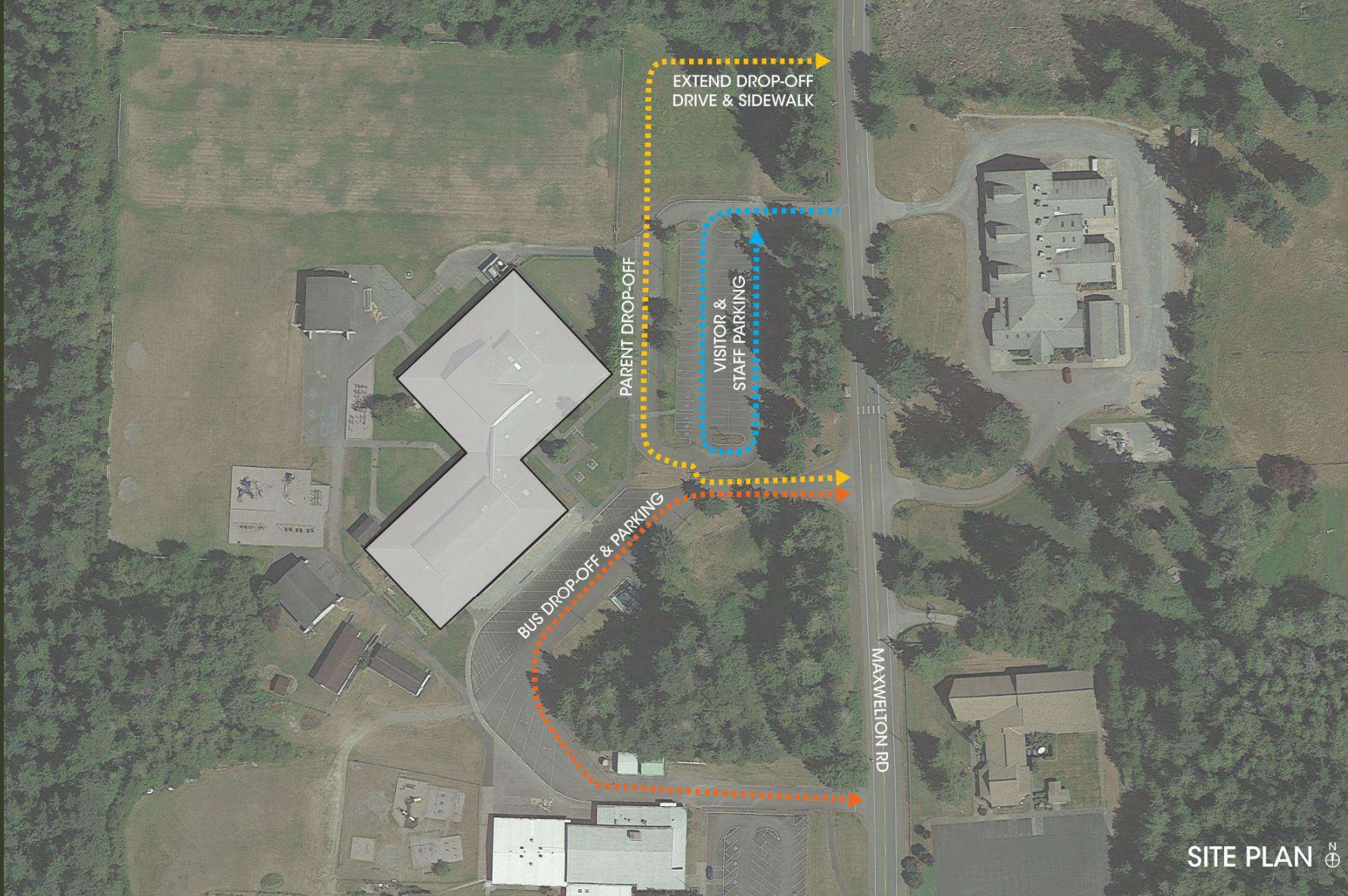


### LEGEND

-  HS ENTRANCE
-  POTENTIAL MS ENTRANCE
-  SPECIAL EDUCATION ENTRANCE
-  COMBINED DROP-OFF ENTRY
-  GENDER INCLUSIVE RESTROOM
-  ADMINISTRATIVE SPACES
-  UPGRADED RESTROOMS & LOCKER ROOMS
-  HEALTH CLINIC EXPANSION
-  LIFE SKILLS - RESTROOM & LAUNDRY
-  ADDITION FOR OFFICE & CONF
-  SECURE ENTRY VESTIBULE W/ ACCESS TO ADMIN



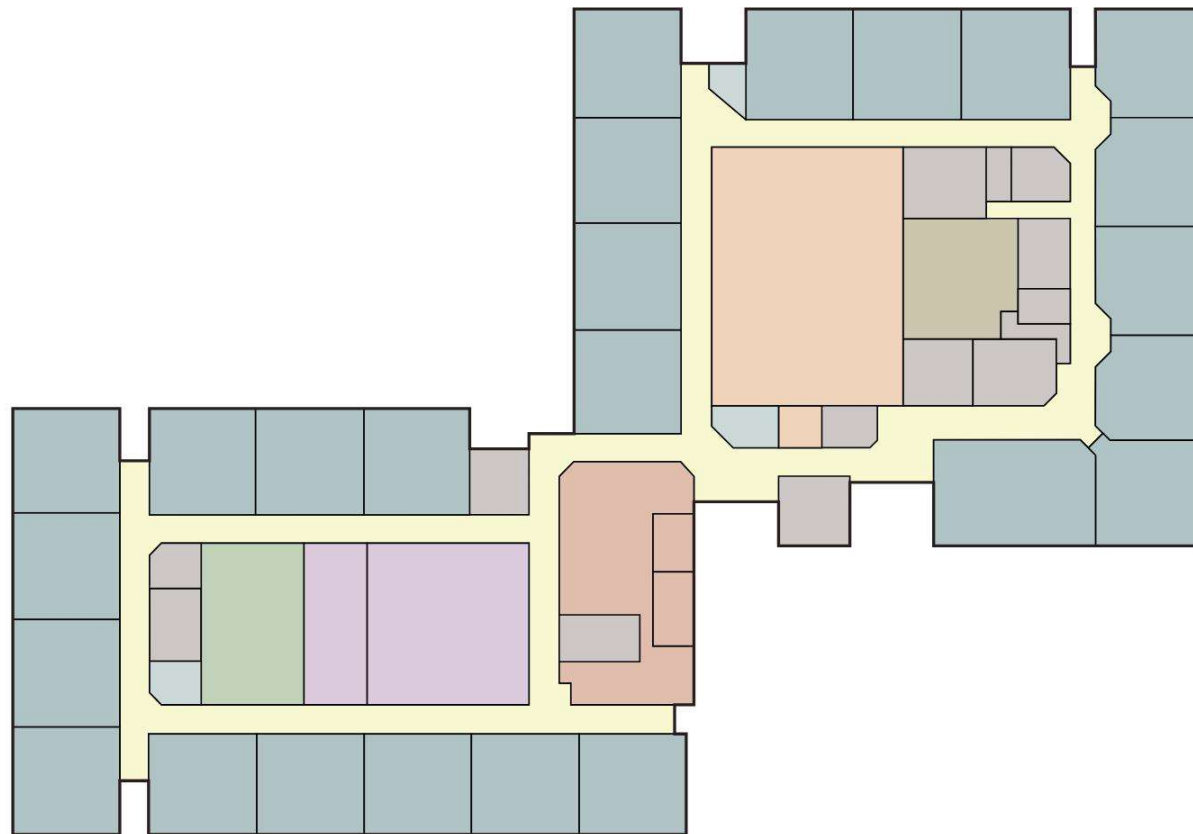
# PROPOSED ELEMENTARY SITE PLAN

















SITE PLAN 

INTEGRUS  
DESIGN FOR THE COMMONS

# elementary program floor plan



## LEGEND

-  HS ENTRANCE
-  POTENTIAL MS ENTRANCE
-  SPECIAL EDUCATION ENTRANCE
-  COMBINED DROP-OFF ENTRY
-  GENERAL CLASSROOMS/  
CLASSROOM SUPPORT
-  SPECIAL USE CLASSROOM
-  SCIENCE-CREATIVE SPACES/  
SCIENCE SUPPORT
-  FINE & PERFORMING ARTS
-  ADMINISTRATION & STUDENT  
SERVICES
-  LEARNING RESOURCE AREA
-  PHYSICAL EDUCATION
-  COMMONS
-  SERVICE & SUPPORT SPACES
-  CIRCULATION



# elementary scope floor plan



## LEGEND

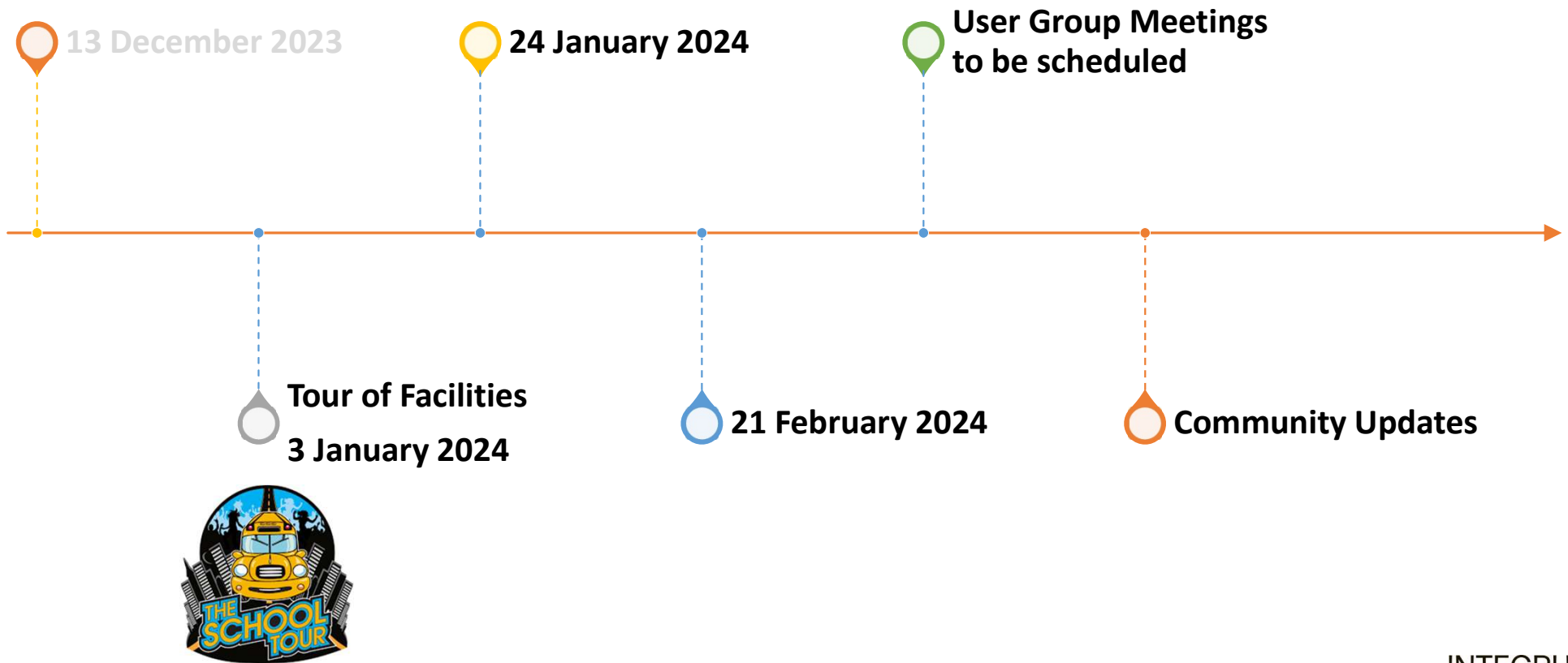
- HS ENTRANCE
- POTENTIAL MS ENTRANCE
- SPECIAL EDUCATION ENTRANCE
- COMBINED DROP-OFF ENTRY
- GENDER INCLUSIVE RESTROOM
- ADMINISTRATIVE SPACES
- UPGRADED RESTROOMS & LOCKER ROOMS
- HEALTH CLINIC EXPANSION
- LIFE SKILLS - RESTROOM & LAUNDRY
- ADDITION FOR OFFICE & CONF
- SECURE ENTRY VESTIBULE W/ ACCESS TO ADMIN



- Please share any items that you would like to discuss further.



# SCHEDULE



## PURPOSE OF SCHOOL TOURS



- to establish a shared understanding of our current reality related to our facilities
- to provide opportunities to compare and contrast different learning environments
- to provide opportunities to compare and contrast building systems
- to create shared perspective to inform future conversations



# THANK YOU!



**INTEGRUS**  
A COLLABORATION OF YGH & INTEGRUS ARCHITECTURE