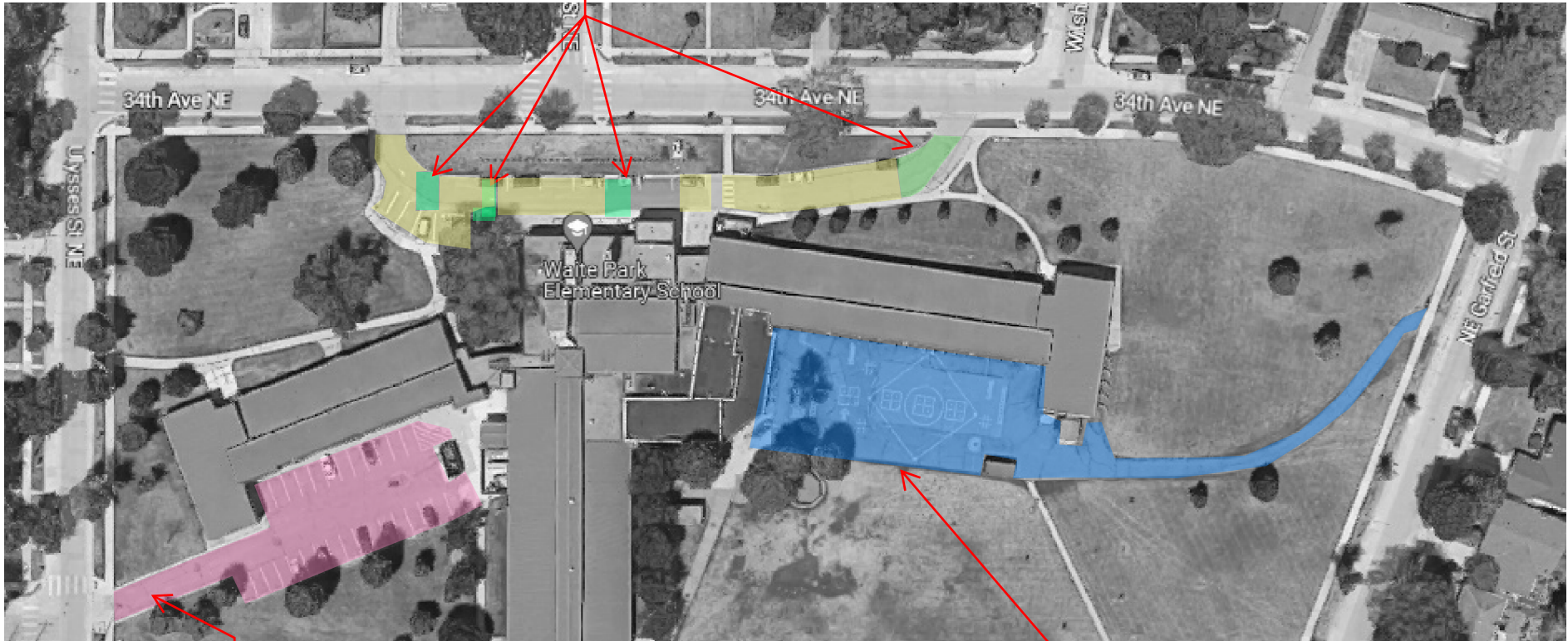


WAITE PARK ELEMENTARY SCHOOL
1800 34th Ave NE, Minneapolis, MN 55418

Remove & Patch Asphalt in areas highlighted green, including around manhole by Hdcp parking stall

Crack fill & Sealcoat areas highlighted yellow
Include restriping



Add Alternate:
Remove & replace asphalt
Heavy Duty: 4.5" in drive lane
Light Duty: 3.5" in parking spots
Include restriping

Add Alternate: Crackfill and sealcoat area highlighted blue, include restriping
Add Alternate: Overlay area highlighted blue, include restriping