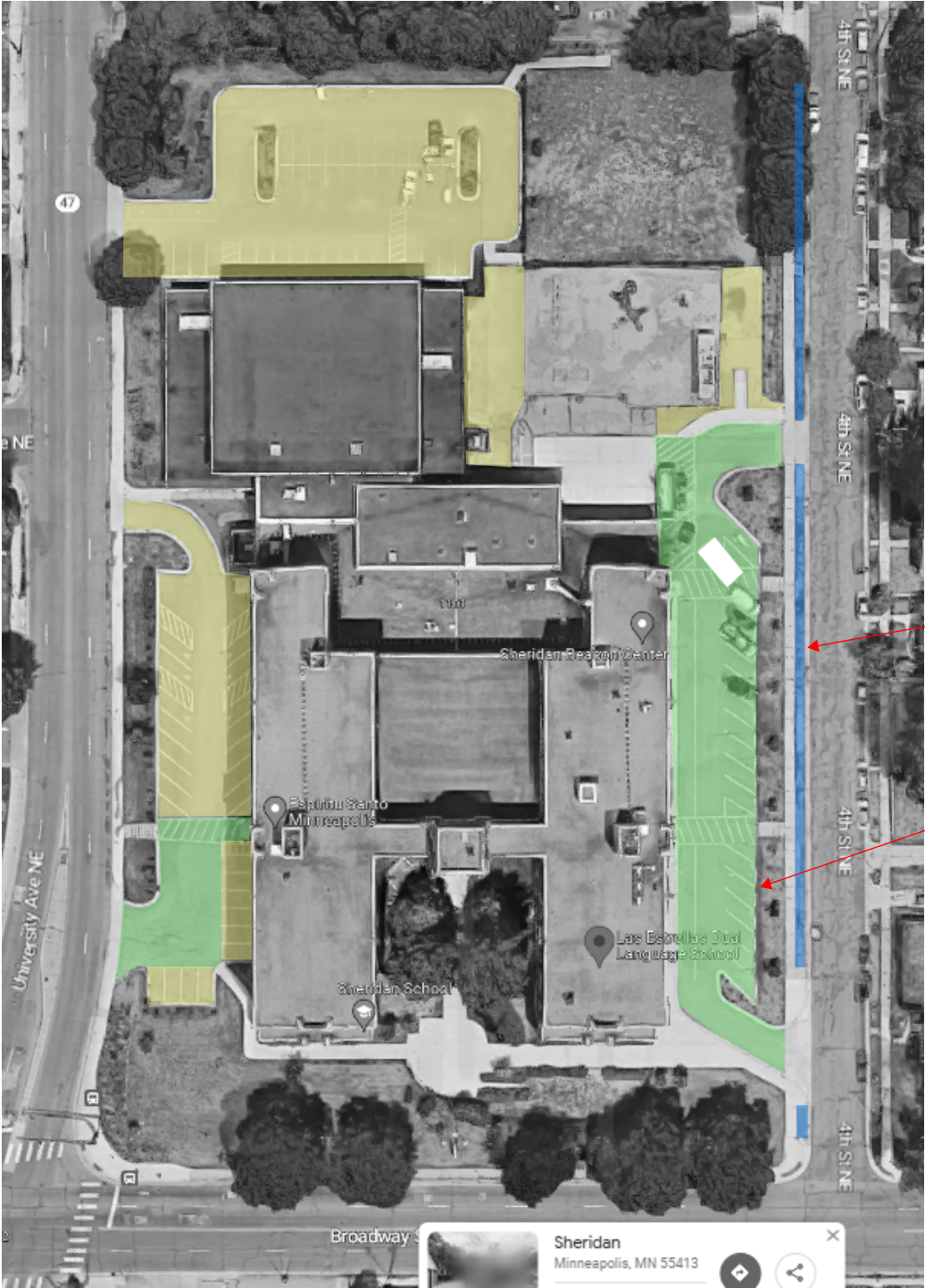


LAS ESTRELLAS ELEMENTARY SCHOOL 1201 University Ave NE, Minneapolis, MN 55413



Remove & Patch Asphalt in areas highlighted green
Heavy Duty: 4.5" in drive lane
Light Duty: 3.5" in parking spots
Include restriping

Crack fill & Sealcoat areas highlighted yellow
Include restriping

Add Alternate:
Remove & replace asphalt between sidewalk and curb area

Provide Add Alternate to replace missing and/or damaged curb stops