

PSEO at CENTURY COLLEGE

Century College Admissions

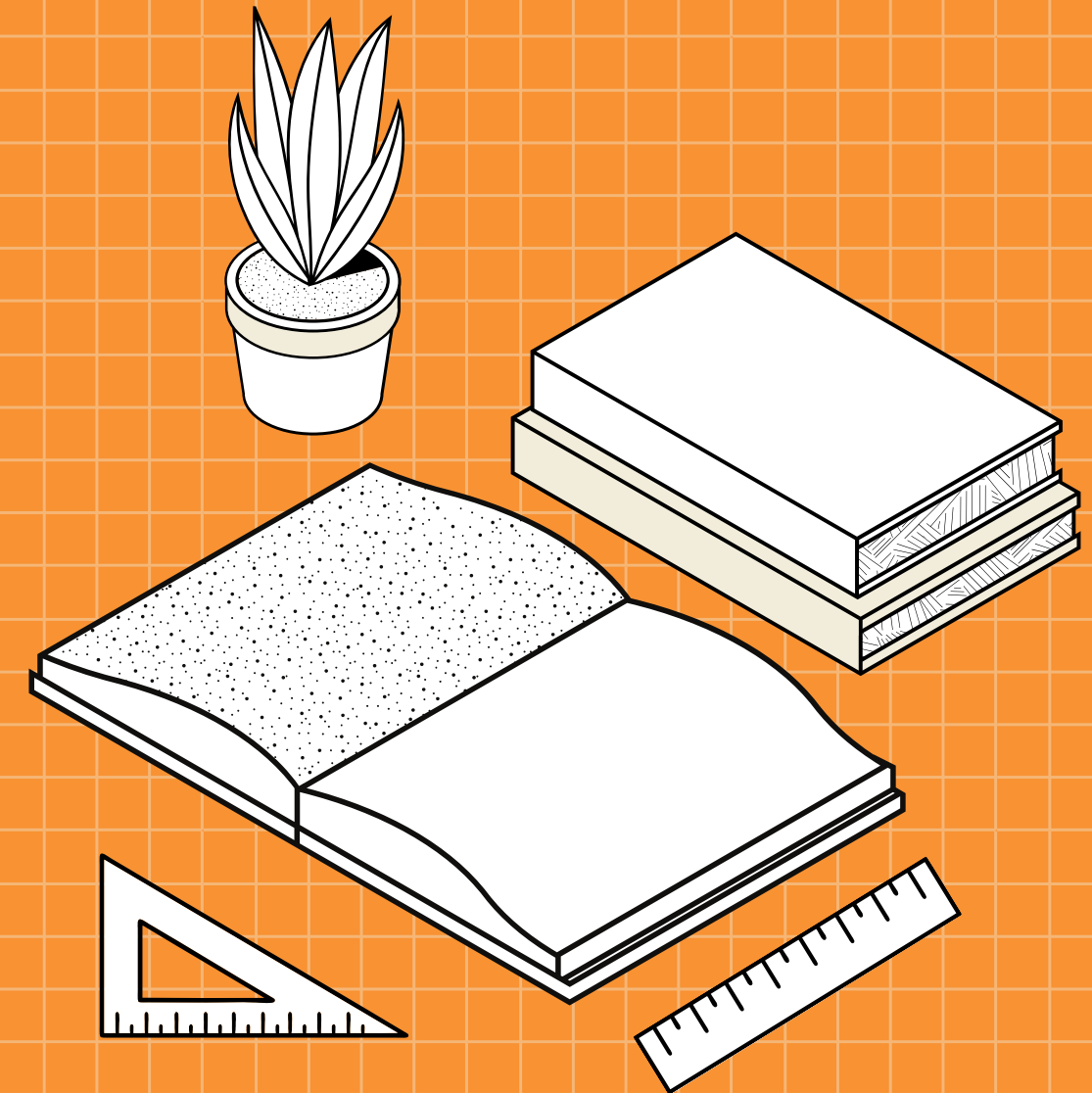
Apply at: <https://www.century.edu/admissions/high-school-options/>

Email at: pseo@century.edu

What Is PSEO?

*PSEO=Post Secondary Enrollment Option

- The goal is to promote rigorous academic pursuits or career exploration through dual enrollment courses.
- Students receive both high school and college credits.
- Students may enroll full-time or part-time.
- Open to Sophomores, Juniors and Seniors.



To be eligible, a student must meet the admissions requirements of the post-secondary institution.

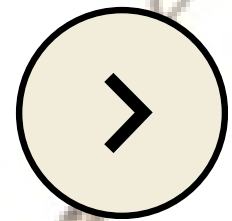


WHAT ARE THE COSTS?

- The State of Minnesota pays for tuition and required text-books and course materials.
- No additional fee for parking.
- **Students pay for:**
 - Nonrequired but recommended text-books
 - Any consumable supplies that will belong to them at the end of the semester (E.g., pens/pencils, notebooks, rubber gloves, etc.)
- Transportation reimbursements are available at the Minnesota Department of Education (MDE).

The Successful PSEO Student

- PSEO is not for everyone
- Must be self-motivated
- Students need to be very organized
- Must be good with time management
- Have a proven track record of academic success
- Possess the maturity level to take on additional responsibilities
- Be prepared for online coursework





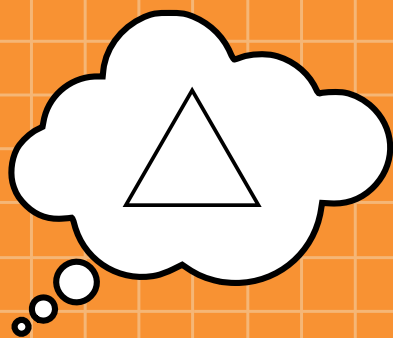
Things to Keep in Mind

PSEO classes will be on both the high school and college transcripts.

Students will follow both the high school and college academic calendars.

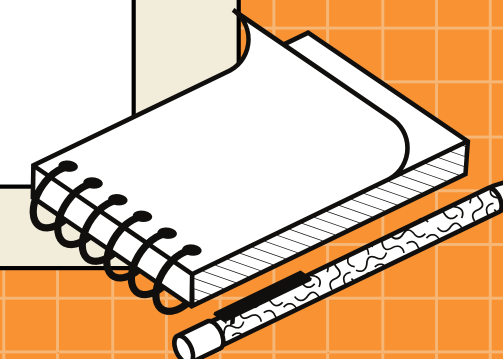
PSEO students need to follow high school and college expectations (E.g., scheduling, attendance, email communication, and technology use).

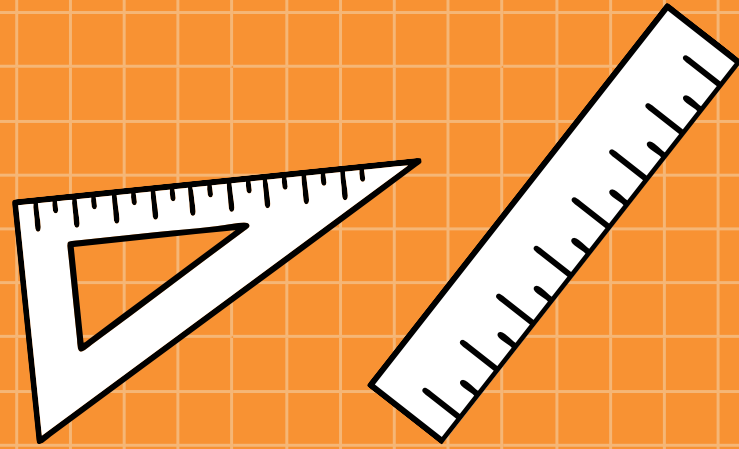
A 2.0 GPA requirement (cumulative) and 67% completion rate is required at Century to meet Satisfactory Academic Progress requirements.



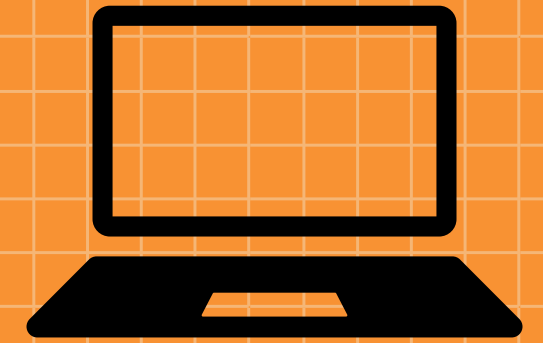
MAY 30TH DEADLINE

- Students are **required** to notify their school district of possible PSEO enrollment by May 30th.
- Schools have the ability to not approve PSEO participation if they are alerted after May 30th.
- Post-Secondary institutions **do not** have the ability to supersede the secondary school's decision.





Application Deadlines

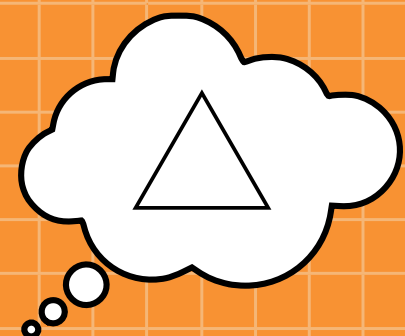
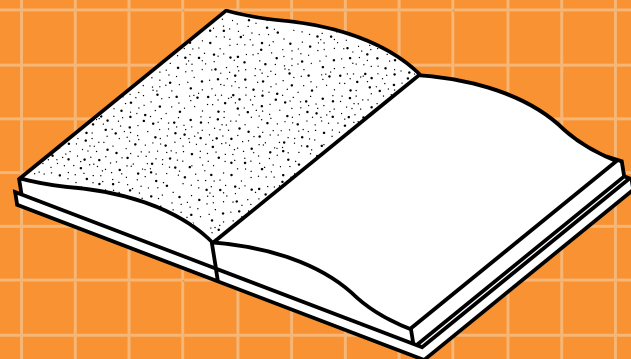


Fall Term 2024

May 1, 2024
and
July 1, 2024

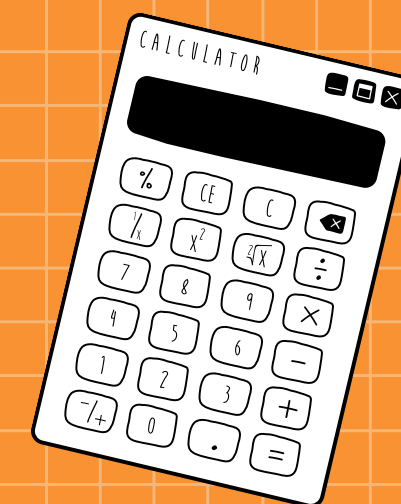
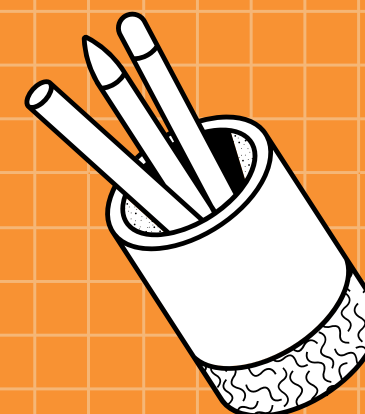
SpringTerm 2025

DECEMBER 1, 2024



APPLICATION PROCESS

Juniors & Seniors



STEP 1: COLLEGE-LEVEL PLACEMENT IN READING/ENGLISH

1. High School GPA

Cumulative GPA of 2.6+

2. Standardized Test Scores

ACT:

- Reading Score of 21+

OR

- English Score of 18+

For **MCA** & **SAT** requirements, please visit the Testing Center website.

3. Appeal

Reading Course Placement Form

Math is Optional

- ACT Math Score of 22+

OR

- Cumulative GPA 2.8+ and high school algebra 2 with C- or better

OR

- MCA Math Score of 1148+



STEP 2: PSEO ADMISSIONS/ OPTION A

Students are only required to meet one of the items listed in Option A

- **Class Rank**
 - Juniors - Top 3rd of class
 - Seniors - Top half of class
- **Decile**
 - Juniors - 3rd decile or higher
 - Seniors - 5th decile or higher
- **GPA**
 - Juniors - 3.0 or higher
 - Seniors - 2.5 or higher [cumulative]



STEP 2: ADMISSIONS/ OPTION B

Nationally Standardized Norm-Referenced Test
ACT, SAT, PSAT & PRE-ACT only

- Juniors - At or above the 70th percentile
- Seniors - At or above the 50th percentile

STEP 2: ADMISSIONS/ OPTION C

Appeal Process

This is for students who do not meet Option A or B

- Letter of recommendation from a high school counselor or teacher.
- Written essay on why the student will benefit from PSEO and what the student can contribute to Century College as a PSEO student.
- Submission of materials does not guarantee admission to the PSEO program.
- Decisions regarding this option are made according to a point system.
 - Letter of recommendation
 - Rigor of transcripts
 - Progressive improvement
 - Essay
 - GPA



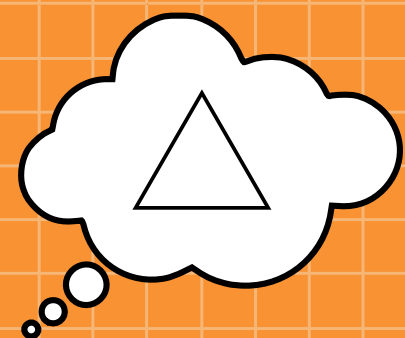
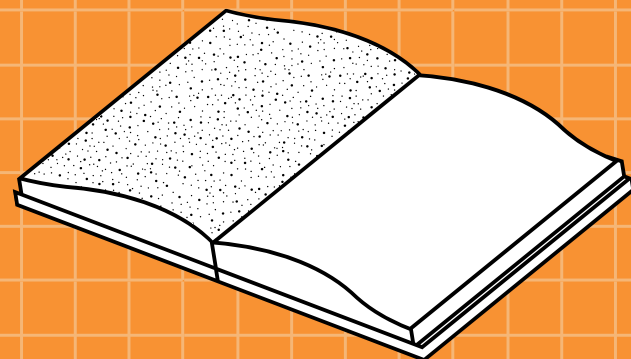
COURSE AVAILABILITY

- General education courses (MnTC Course List)
- Most technical courses
 - **Exceptions:**
 - **Special Application programs**
 - Dental Assistant, Dental Hygiene, Paramedic Science, Paramedic Fire Science, Nursing, Orthotics & Prosthetics and Radiologic Technology
 - However, students may take the **pre-requisite** courses to these programs and apply to the program once the student graduates from high school.



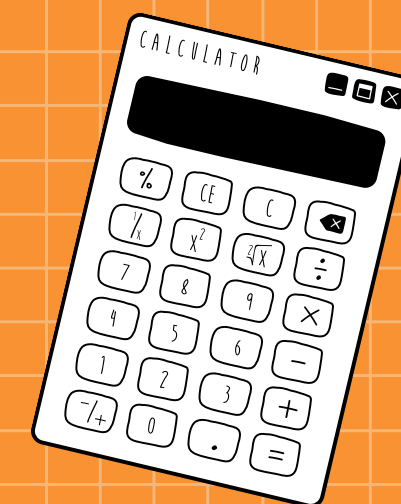
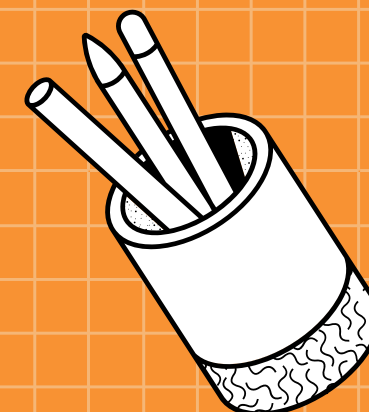
COURSE AVAILABILITY

- Not eligible for Private Music courses.
- Not eligible for any developmental courses.
- Not eligible for any courses taking place off campus.
 - Includes all Certified Nursing Assistant (CNA) courses
- Please review the "**Restricted Courses for PSEO**" list on our website.



APPLICATION PROCESS

Sophomores





ADMISSIONS INFORMATION

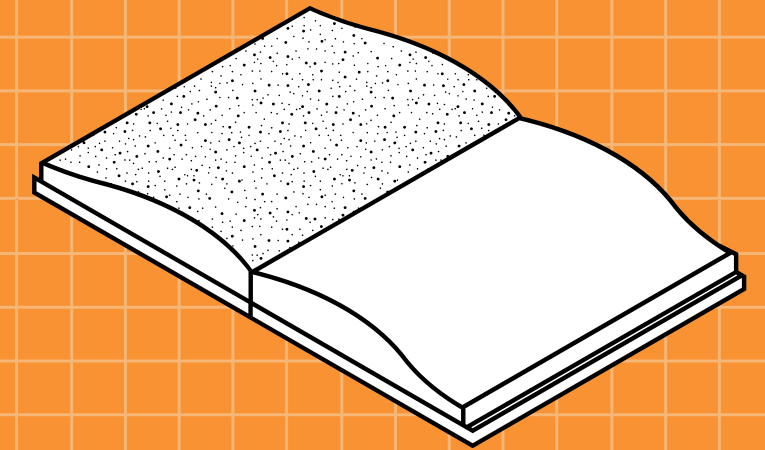
- Designed to introduce students to career & technical education courses.
- Must have achieved proficient score on 8th Grade MCA Reading Section (850 or higher)
 - Can substitute other methods to demonstrate College-Level Reading placement.
- Complete the online application.
- Submit documentation via the **PSEO Application Materials Submission eForm.**



COURSE AVAILABILITY

- 10th graders must select classes from the "**Approved Courses for 10th Grade PSEO**" list.
- May take one course first semester, if grade of C or higher is achieved, may take additional courses next semester.
 - Course selection at that point is not limited to the 10th Grade Course List.

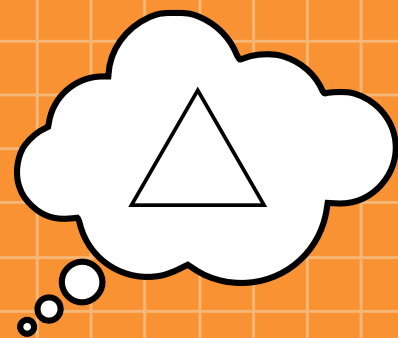
Must reapply to 11th & 12th Grade PSEO



**Online
Only!**

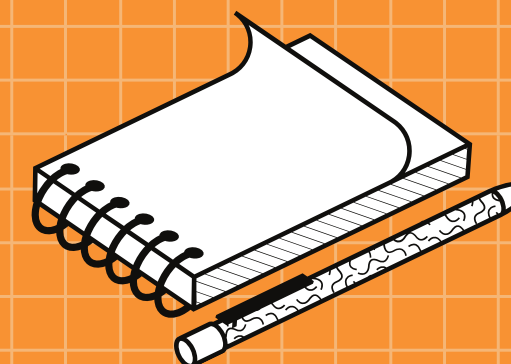
Complete the online
general application

Complete the
**PSEO Applications
Submission eForm**



ALL STUDENTS MUST SUBMIT

- Notice of Student Registration Form (NOSR)
- High School Transcript



Once Accepted to PSEO

- Students will receive an acceptance notification via email.
- **ALL** PSEO students are **required** to go through the PSEO Orientation process.
 - Orientation for PSEO students is currently online.
- **Step 1:** Complete Online PSEO Orientation
- **Step 2:** Register for classes and/or schedule an appointment with your Academic Advisor



**Please watch the start date
as they are not the same as
high school!**

Fall Semester start:
Monday, August 19, 2024

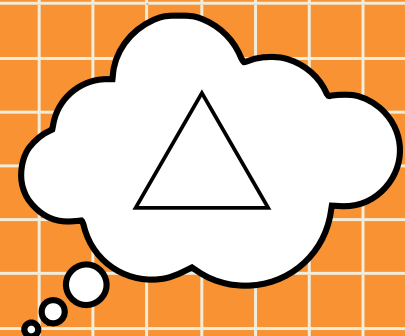
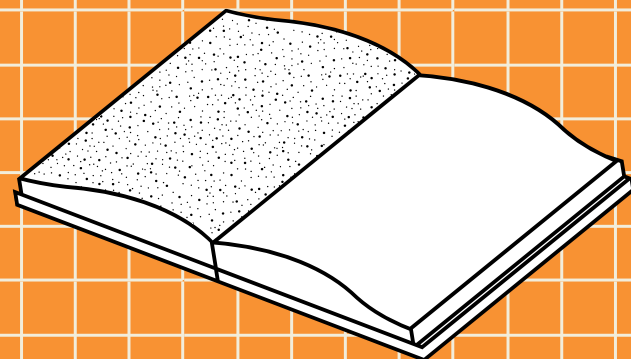


MAKING THE FINAL DECISION

- Your high school counselor is an essential resource in your decision process!
- Review the potential negatives and positives of PSEO with your parents/guardians and your counselor.
- Make sure that all high school requirements are able to be met.

QUESTIONS ?





○○○

+

THANK YOU!

We hope to see you at Century College!
Contact us at pseo@century.edu.

