

**We are now hiring for kitchen jobs!**

- Part-time
  - Medical Benefits
  - Daytime Schedule
  - Holidays off
  - Weekends off
- Visit our website for more details!



**TOMBALL**  
INDEPENDENT SCHOOL DISTRICT  
*Not just a district, a destination.*

### MONDAY

Our unit breakfast consists of all 3 food components placed on the student's tray.

### TUESDAY

Food Components Required at Breakfast:  
Whole Grain  
Fruits & Milk

### WEDNESDAY

All breakfast cereals and pastries contain at least 51% whole grain.

### THURSDAY

1 Chicken & Waffle  
100% fruit juice  
Low-Fat White Milk

### FRIDAY

2 Whole Grain Cereal  
Chilled Fruit  
Low-Fat White Milk

5 Mini-Waffles  
100% fruit juice  
Low-Fat White Milk

6 Whole Grain Cereal  
100% fruit juice  
Low-Fat White Milk

7 Mini-Pancakes  
Fresh Fruit  
Low-Fat White Milk

8 Chicken & Waffle  
100% fruit juice  
Low-Fat White Milk

9 Whole Grain Cereal  
Chilled Fruit  
Low-Fat White Milk

12 Mini-Waffles  
100% fruit juice  
Low-Fat White Milk

13 Whole Grain Cereal  
100% fruit juice  
Low-Fat White Milk

14 Mini-Pancakes  
Fresh Fruit  
Low-Fat White Milk

15 Chicken & Waffle  
100% fruit juice  
Low-Fat White Milk

16 **Staff Development Holiday**

19 **Presidents Day Holiday**

20 Whole Grain Cereal  
100% fruit juice  
Low-Fat White Milk

21 Mini-Pancakes  
Fresh Fruit  
Low-Fat White Milk

22 Chicken & Waffle  
100% fruit juice  
Low-Fat White Milk

23 Whole Grain Cereal  
Chilled Fruit  
Low-Fat White Milk

26 Mini-Waffles  
100% fruit juice  
Low-Fat White Milk

27 Whole Grain Cereal  
100% fruit juice  
Low-Fat White Milk

28 Mini-Pancakes  
Fresh Fruit  
Low-Fat White Milk

29 Chicken & Waffle  
100% fruit juice  
Low-Fat White Milk

1% White Milk is offered daily.



Food and Nutrition Division  
National School Lunch Program

**Student Breakfast:**  
**\$1.50**  
**Adult Breakfast:**  
**\$3.10**



TEXAS DEPARTMENT OF AGRICULTURE  
**COMMISSIONER SID MILLER**  
This product was funded by USDA.  
This institution is an equal opportunity provider.

Meals are Subject to  
Change due to  
Ongoing Supply Chain  
and Staffing Issues



### MONDAY

Our unit lunch consists of all 5 food components placed on the student's tray

### TUESDAY

Food Components:  
Meat/Meat Alternate  
Whole Grain  
Fruits, Vegetables  
Milk

### WEDNESDAY

All lunch rolls, tortillas, rice, pastas and breads contain at least 51% whole grain.

### THURSDAY

1 Pizza Slice or  
Chicken Bites or  
Chicken Popper Salad  
Vegetables, Fruits  
Milk

### FRIDAY

2 Cheeseburger or  
Chicken Sandwich or  
Chicken Popper Salad  
Vegetables, Fruits  
Milk  
Frozen Friday Fun Treat!

5 Teriyaki Beef  
Chow Mein Noodles  
Vegetables, Fruits  
& Milk

6 Soft Taco  
Vegetables, Fruits  
Milk

7 Vegetarian  
Chicken Nuggets  
Vegetables, Fruits  
Breadstick & Milk

8 Baja Fish Sticks  
Vegetables, Fruits  
Milk

9 Cheeseburger  
Vegetables, Fruits  
Milk

12 Rotini & Beef  
Meatsauce  
Vegetables, Fruits  
Milk

13 Crispy Tacos  
Vegetables, Fruits  
Milk

14 Steak Fingers  
Vegetables, Fruits  
Dinner Roll & Milk

15 Pizza  
Vegetables, Fruits  
Milk

16 **Staff  
Development  
Holiday**

19 **Presidents  
Day  
Holiday**

20 Soft Taco  
Vegetables, Fruits  
Milk

21 Vegetarian  
Chicken Nuggets  
Vegetables, Fruits  
Breadstick & Milk

22 Baja Fish Sticks  
Vegetables, Fruits  
Milk

23 Cheeseburger  
Vegetables, Fruits  
Milk

26 Rotini & Beef  
Meatsauce  
Vegetables, Fruits  
Milk

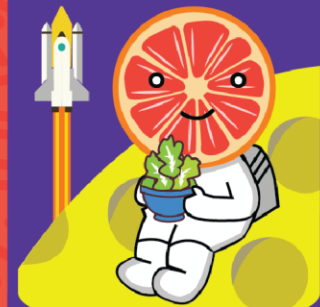
27 Crispy Tacos  
Vegetables, Fruits  
Milk

28 Steak Fingers  
Vegetables, Fruits  
Dinner Roll & Milk

29 Pizza  
Vegetables, Fruits  
Milk

1% White Milk offered daily.

## JOHNSON SPACE CENTER



Families who think they may qualify for free or reduced priced meals can apply at [www.schoolcafe.com](http://www.schoolcafe.com)

To add money to a student's account visit: [www.schoolcafe.com](http://www.schoolcafe.com)



**TOMBALL**  
INDEPENDENT SCHOOL DISTRICT  
Not just a district, a destination.



Food and Nutrition Division  
National School Lunch Program

**Student Lunch:**  
\$2.50  
**Adult Lunch:**  
\$4.60



TEXAS DEPARTMENT OF AGRICULTURE  
**COMMISSIONER SID MILLER**

This product was funded by USDA.  
This institution is an equal opportunity provider.

Meals are Subject to  
Change due to  
Ongoing Supply Chain  
and Staffing Issues

