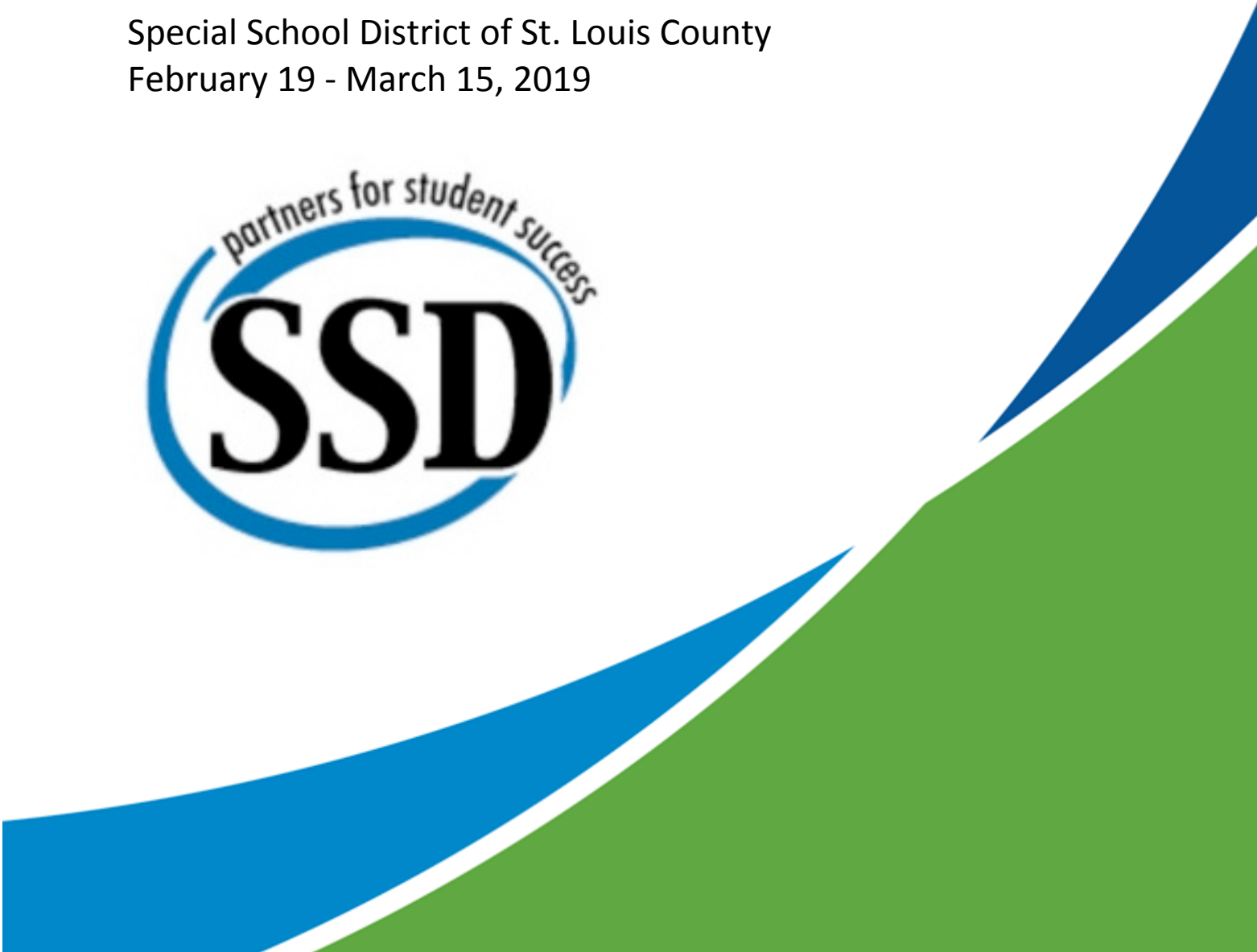


2018-19 Climate Survey Parents/Guardians – SSD Schools Survey Results

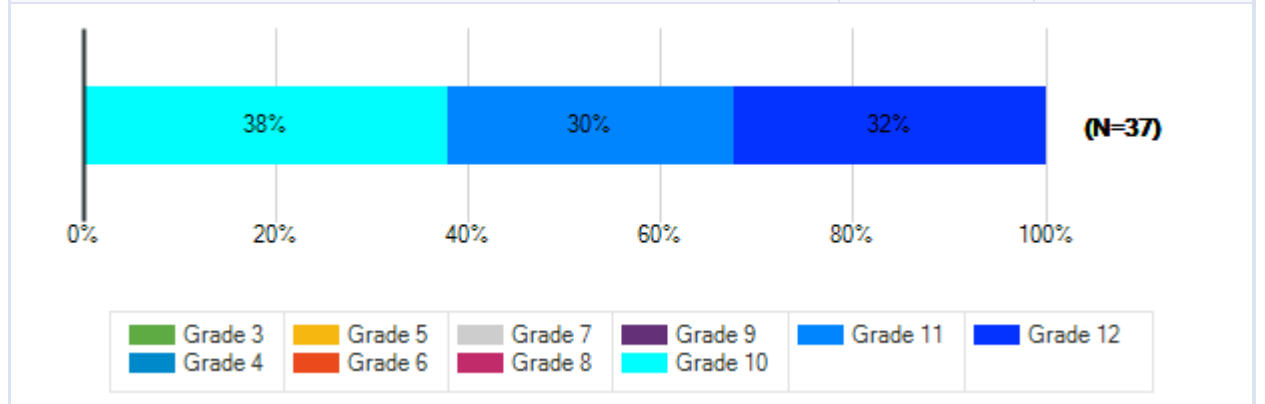
North Technical High School-Full Day

Special School District of St. Louis County
February 19 - March 15, 2019



Q2. Please select your child's grade.

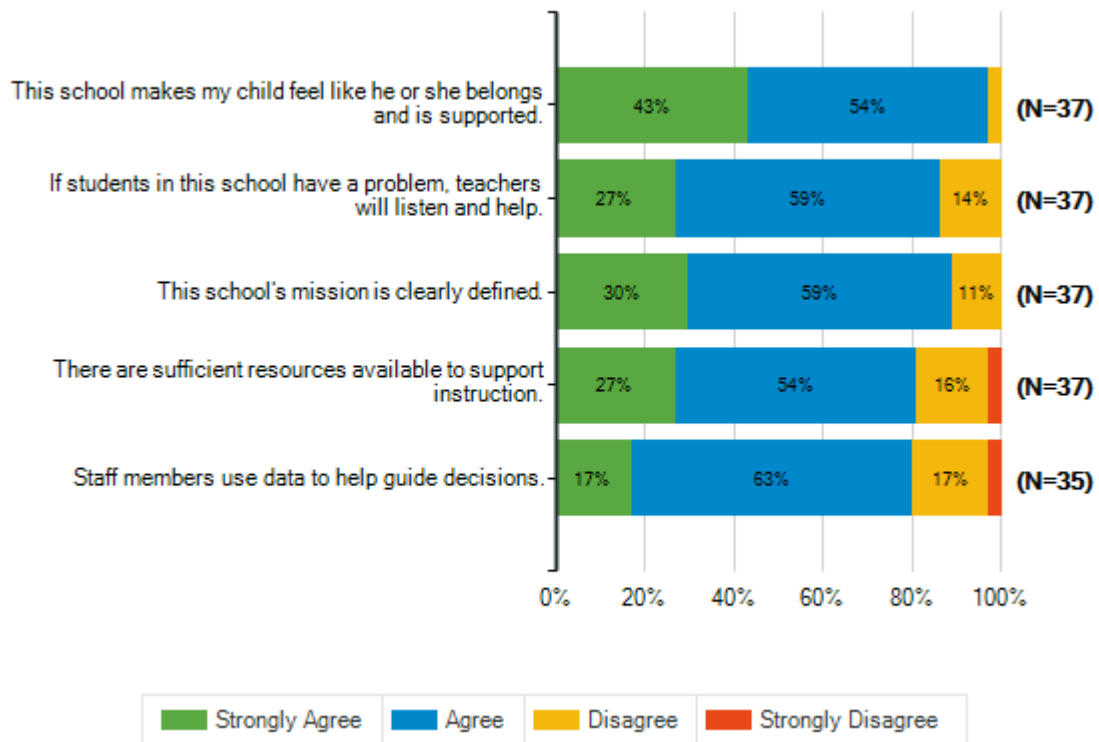
Responses	Count	%
Grade 3	0	0%
Grade 4	0	0%
Grade 5	0	0%
Grade 6	0	0%
Grade 7	0	0%
Grade 8	0	0%
Grade 9	0	0%
Grade 10	14	38%
Grade 11	11	30%
Grade 12	12	32%
Total Responses	37	



School Satisfaction

Q3. How strongly do you agree or disagree with the following statements?

		Strongly Agree	Agree	Disagree	Strongly Disagree	Total Responses
(a)	This school makes my child feel like he or she belongs and is supported.	16 43%	20 54%	1 3%	0 0%	37
(b)	If students in this school have a problem, teachers will listen and help.	10 27%	22 59%	5 14%	0 0%	37
(c)	This school's mission is clearly defined.	11 30%	22 59%	4 11%	0 0%	37
(d)	There are sufficient resources available to support instruction.	10 27%	20 54%	6 16%	1 3%	37
(e)	Staff members use data to help guide decisions.	6 17%	22 63%	6 17%	1 3%	35

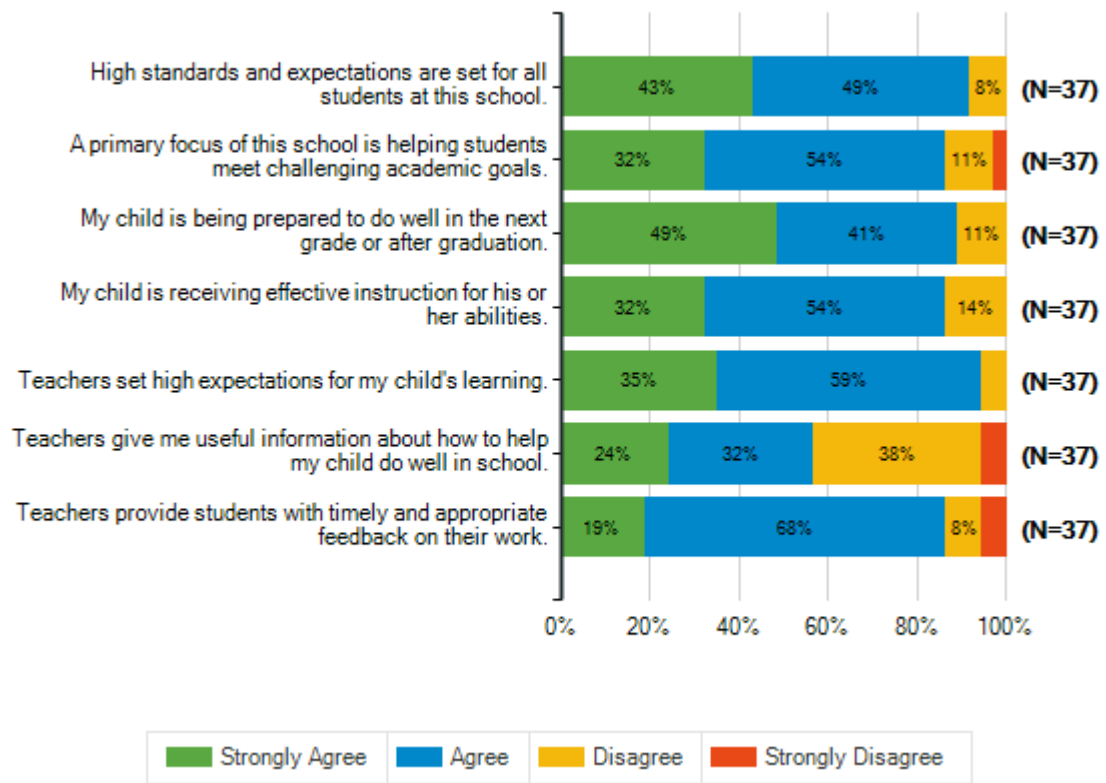


Academic Preparation

Q4. How strongly do you agree or disagree with the following statements?

		Strongly Agree	Agree	Disagree	Strongly Disagree	Total Responses
(a)	High standards and expectations are set for all students at this school.	16 43%	18 49%	3 8%	0 0%	37
(b)	A primary focus of this school is helping students meet challenging academic goals.	12 32%	20 54%	4 11%	1 3%	37
(c)	My child is being prepared to do well in the next grade or after graduation.	18 49%	15 41%	4 11%	0 0%	37
(d)	My child is receiving effective instruction for his or her abilities.	12 32%	20 54%	5 14%	0 0%	37
(e)	Teachers set high expectations for my child's learning.	13 35%	22 59%	2 5%	0 0%	37
(f)	Teachers give me useful information about how to help my child do well in school.	9 24%	12 32%	14 38%	2 5%	37
(g)	Teachers provide students with timely and appropriate feedback on their work.	7 19%	25 68%	3 8%	2 5%	37

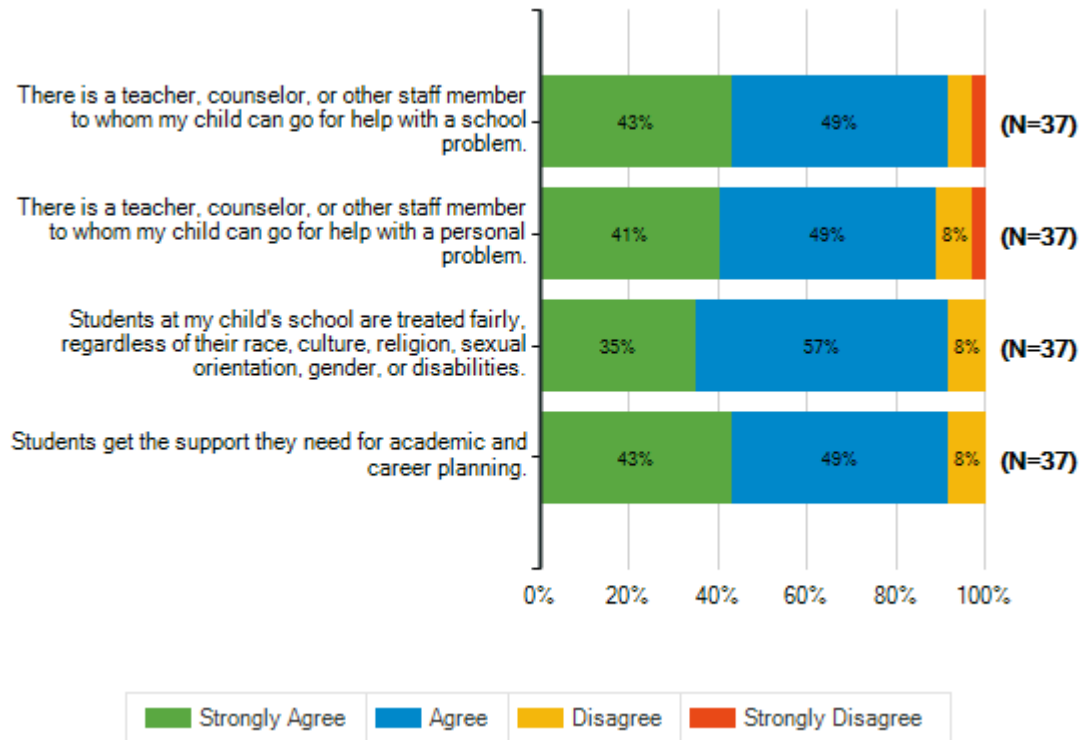
Special School District of St. Louis County
 2018-19 Climate Survey Parents/Guardians – SSD Schools



Student Support

Q5. How strongly do you agree or disagree with the following statements?

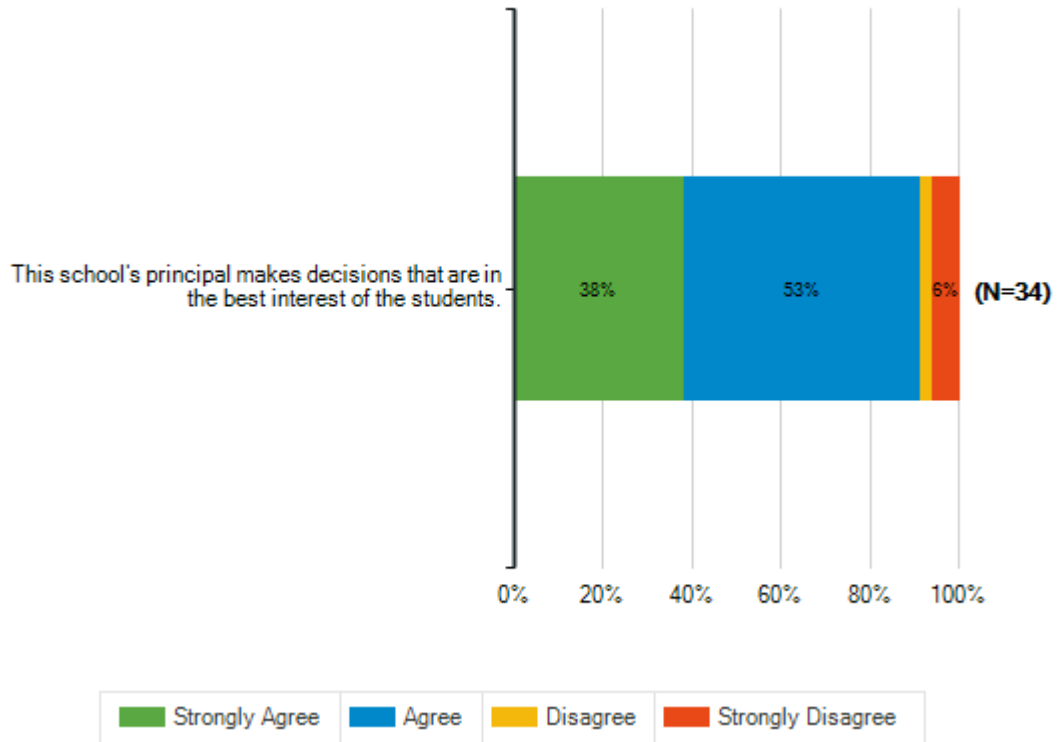
		Strongly Agree	Agree	Disagree	Strongly Disagree	Total Responses
(a)	There is a teacher, counselor, or other staff member to whom my child can go for help with a school problem.	16 43%	18 49%	2 5%	1 3%	37
(b)	There is a teacher, counselor, or other staff member to whom my child can go for help with a personal problem.	15 41%	18 49%	3 8%	1 3%	37
(c)	Students at my child's school are treated fairly, regardless of their race, culture, religion, sexual orientation, gender, or disabilities.	13 35%	21 57%	3 8%	0 0%	37
(d)	Students get the support they need for academic and career planning.	16 43%	18 49%	3 8%	0 0%	37



School Principal

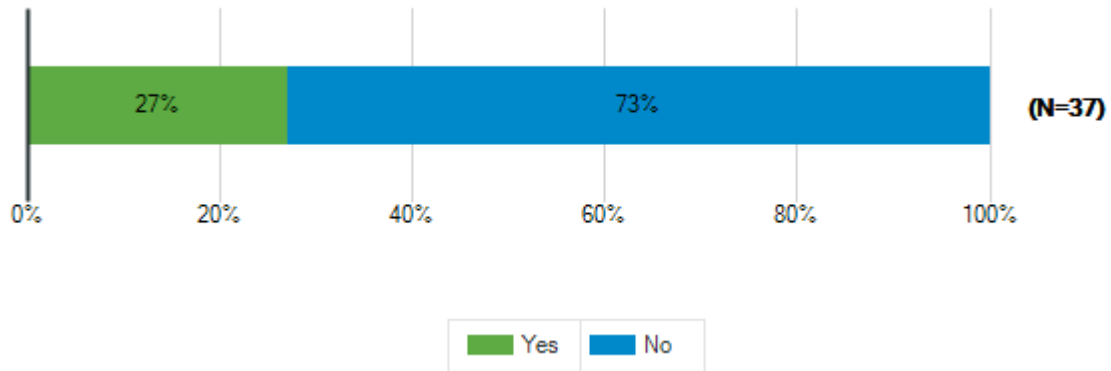
Q6. How strongly do you agree or disagree with the following statement?

		Strongly Agree	Agree	Disagree	Strongly Disagree	Total Responses
(a)	This school's principal makes decisions that are in the best interest of the students.	13	18	1	2	34
		38%	53%	3%	6%	



Q7. Have you had an issue or concern to discuss with the principal or assistant principal this school year?

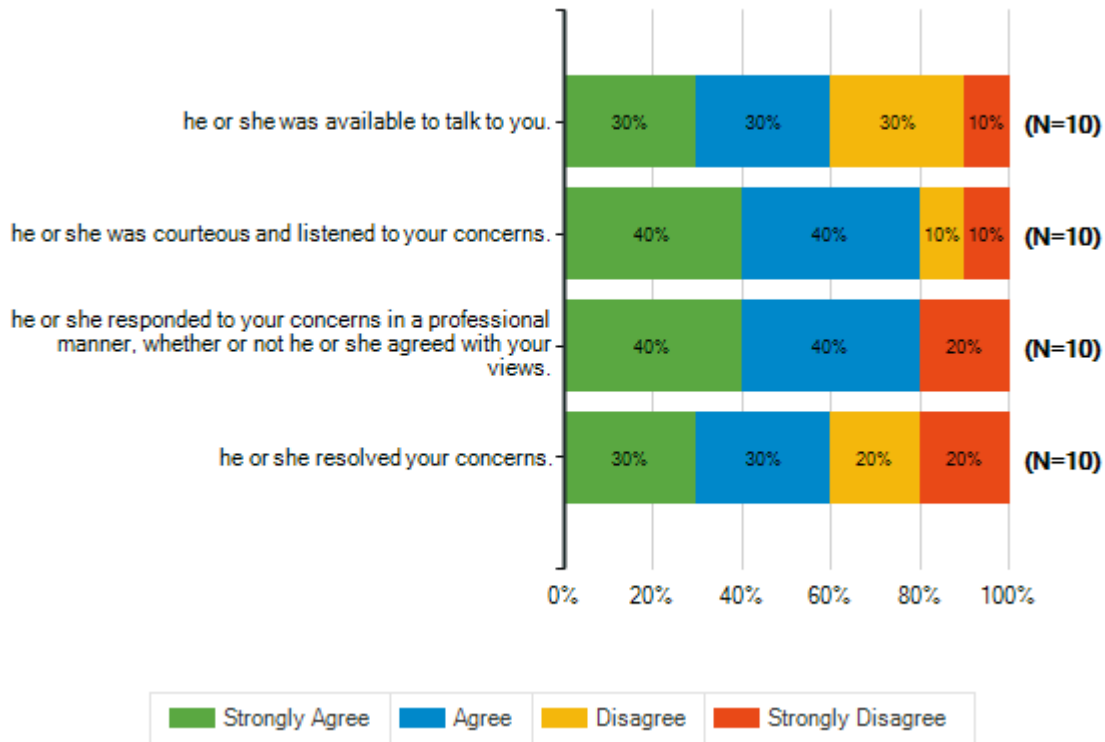
Responses	Count	%
Yes	10	27%
No	27	73%
Total Responses	37	



How strongly do you agree or disagree with the following statements?

Q8. When you have had an issue or a concern to discuss with the principal or assistant principal ...

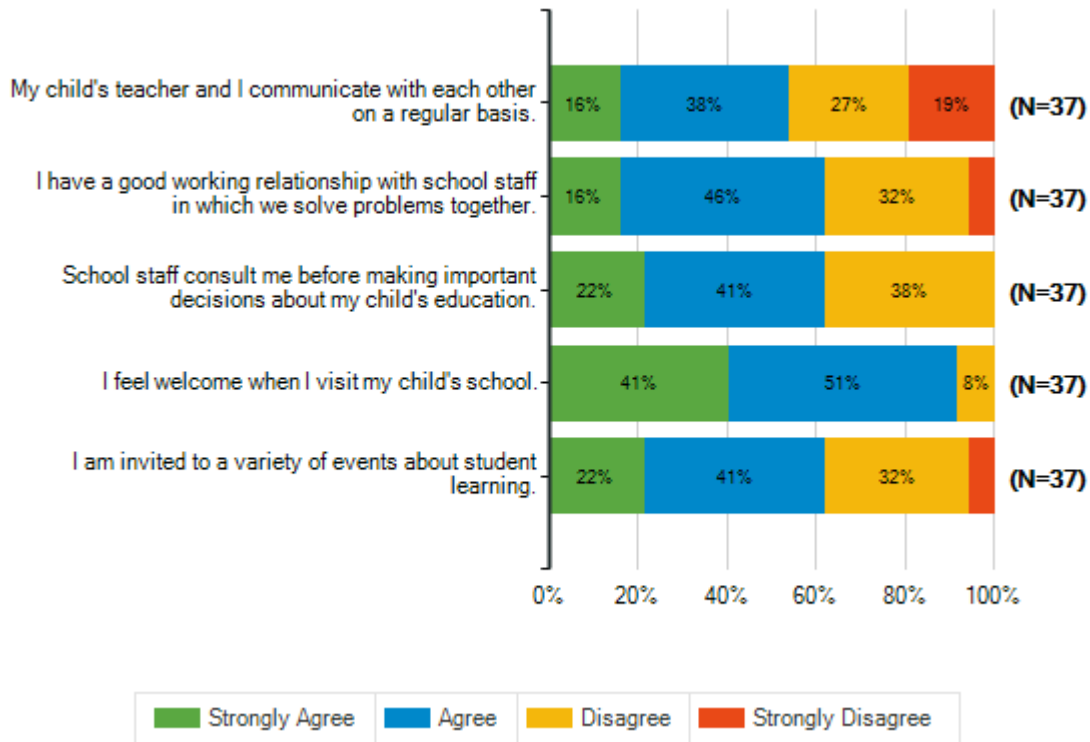
	Strongly Agree	Agree	Disagree	Strongly Disagree	Total Responses
(a) he or she was available to talk to you.	3 30%	3 30%	3 30%	1 10%	10
(b) he or she was courteous and listened to your concerns.	4 40%	4 40%	1 10%	1 10%	10
(c) he or she responded to your concerns in a professional manner, whether or not he or she agreed with your views.	4 40%	4 40%	0 0%	2 20%	10
(d) he or she resolved your concerns.	3 30%	3 30%	2 20%	2 20%	10



Parent and Family Engagement

Q9. How strongly do you agree or disagree with the following statements?

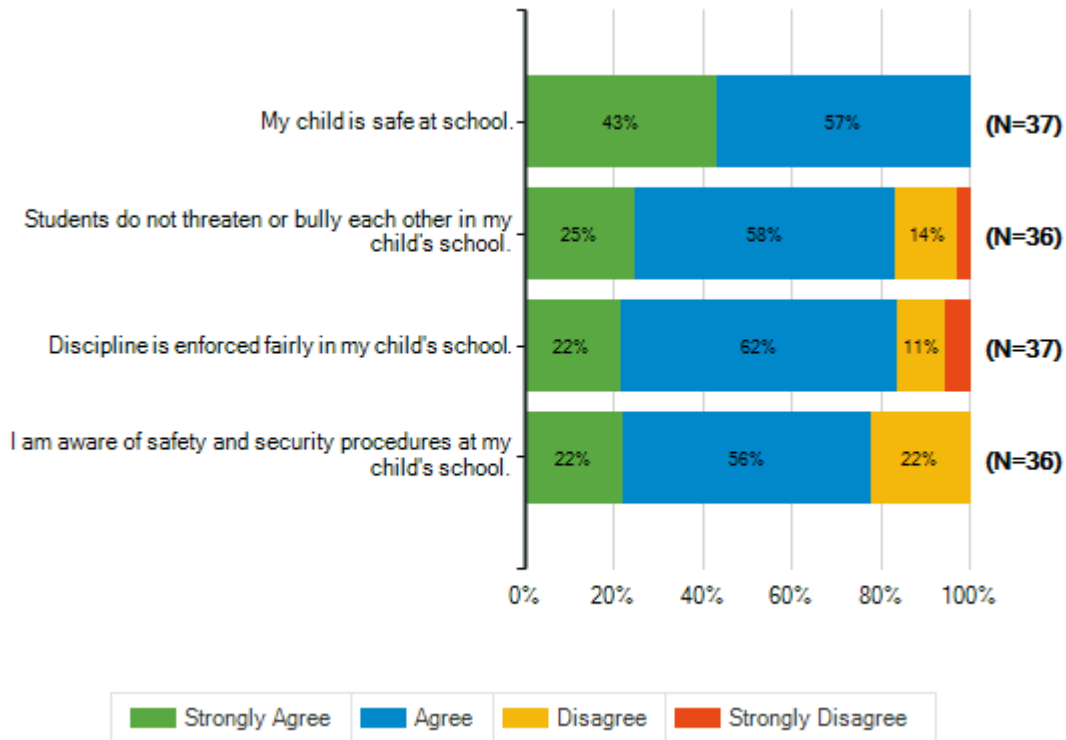
		Strongly Agree	Agree	Disagree	Strongly Disagree	Total Responses
(a)	My child's teacher and I communicate with each other on a regular basis.	6 16%	14 38%	10 27%	7 19%	37
(b)	I have a good working relationship with school staff in which we solve problems together.	6 16%	17 46%	12 32%	2 5%	37
(c)	School staff consult me before making important decisions about my child's education.	8 22%	15 41%	14 38%	0 0%	37
(d)	I feel welcome when I visit my child's school.	15 41%	19 51%	3 8%	0 0%	37
(e)	I am invited to a variety of events about student learning.	8 22%	15 41%	12 32%	2 5%	37



Safety and Behavior

Q10. How strongly do you agree or disagree with the following statements?

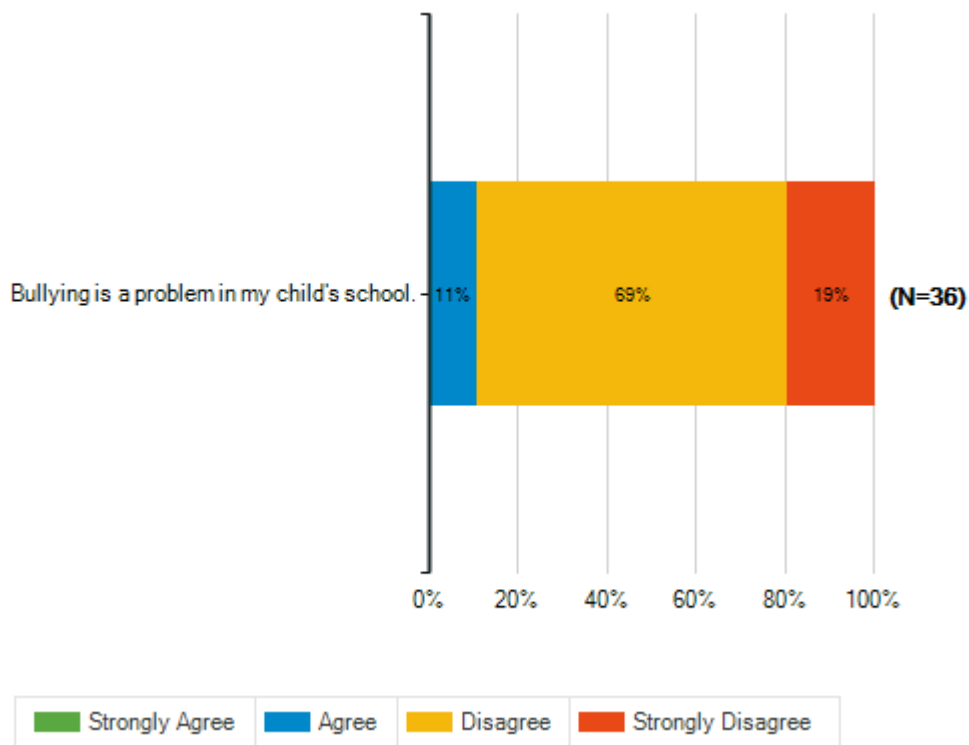
	Strongly Agree	Agree	Disagree	Strongly Disagree	Total Responses
(a) My child is safe at school.	16 43%	21 57%	0 0%	0 0%	37
(b) Students do not threaten or bully each other in my child's school.	9 25%	21 58%	5 14%	1 3%	36
(c) Discipline is enforced fairly in my child's school.	8 22%	23 62%	4 11%	2 5%	37
(d) I am aware of safety and security procedures at my child's school.	8 22%	20 56%	8 22%	0 0%	36



Safety and Behavior

Q11. How strongly do you agree or disagree with the following statement?

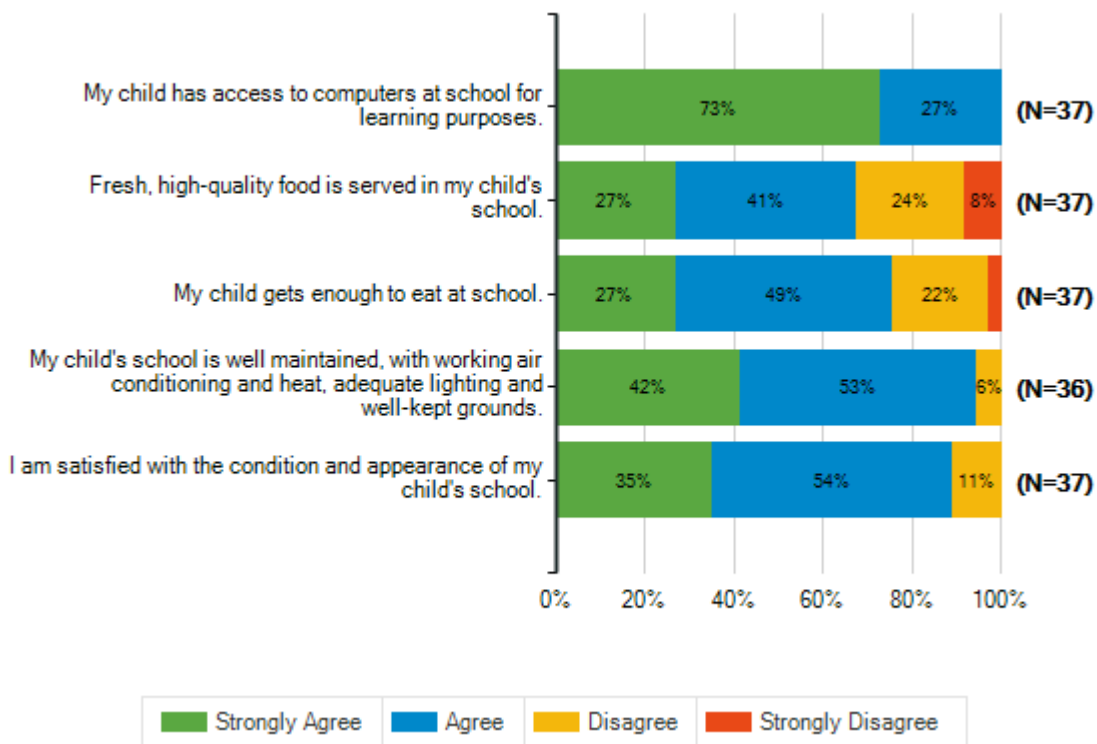
	Strongly Agree	Agree	Disagree	Strongly Disagree	Total Responses
(a) Bullying is a problem in my child's school.	0 0%	4 11%	25 69%	7 19%	36

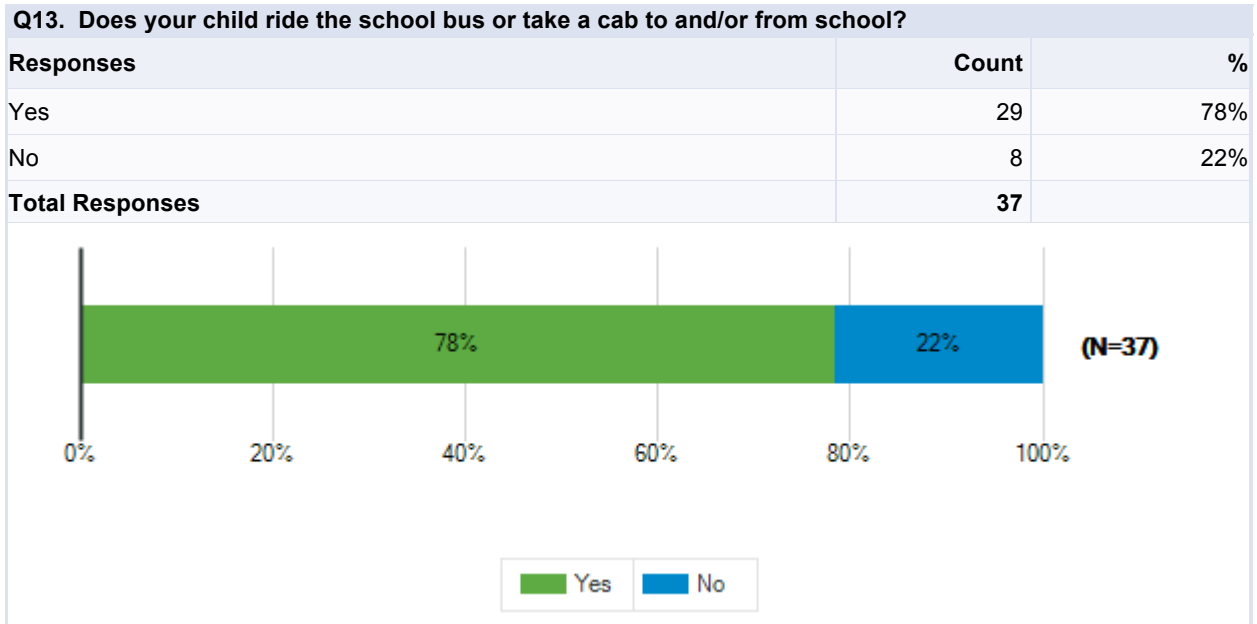


School Operations

Q12. How strongly do you agree or disagree with the following statements?

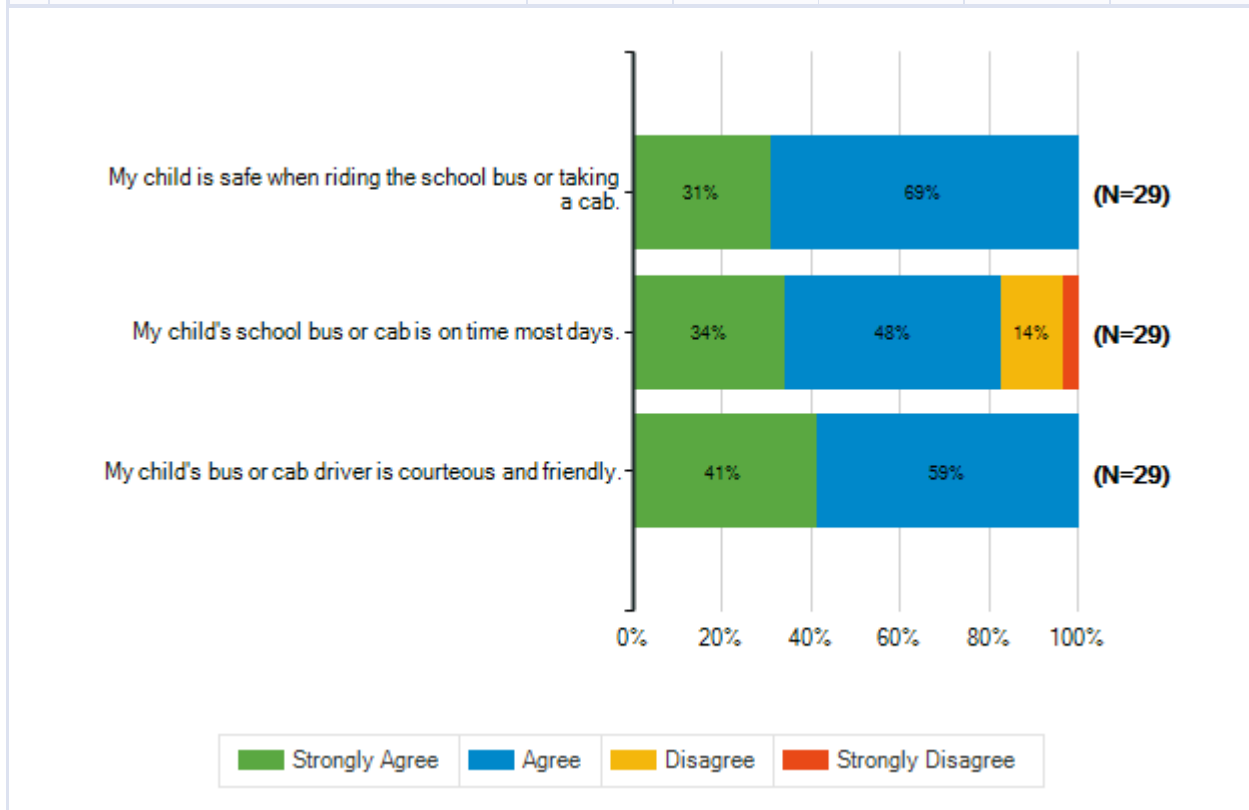
		Strongly Agree	Agree	Disagree	Strongly Disagree	Total Responses
(a)	My child has access to computers at school for learning purposes.	27 73%	10 27%	0 0%	0 0%	37
(b)	Fresh, high-quality food is served in my child's school.	10 27%	15 41%	9 24%	3 8%	37
(c)	My child gets enough to eat at school.	10 27%	18 49%	8 22%	1 3%	37
(d)	My child's school is well maintained, with working air conditioning and heat, adequate lighting and well-kept grounds.	15 42%	19 53%	2 6%	0 0%	36
(e)	I am satisfied with the condition and appearance of my child's school.	13 35%	20 54%	4 11%	0 0%	37





Q14. How strongly do you agree or disagree with the statements below?

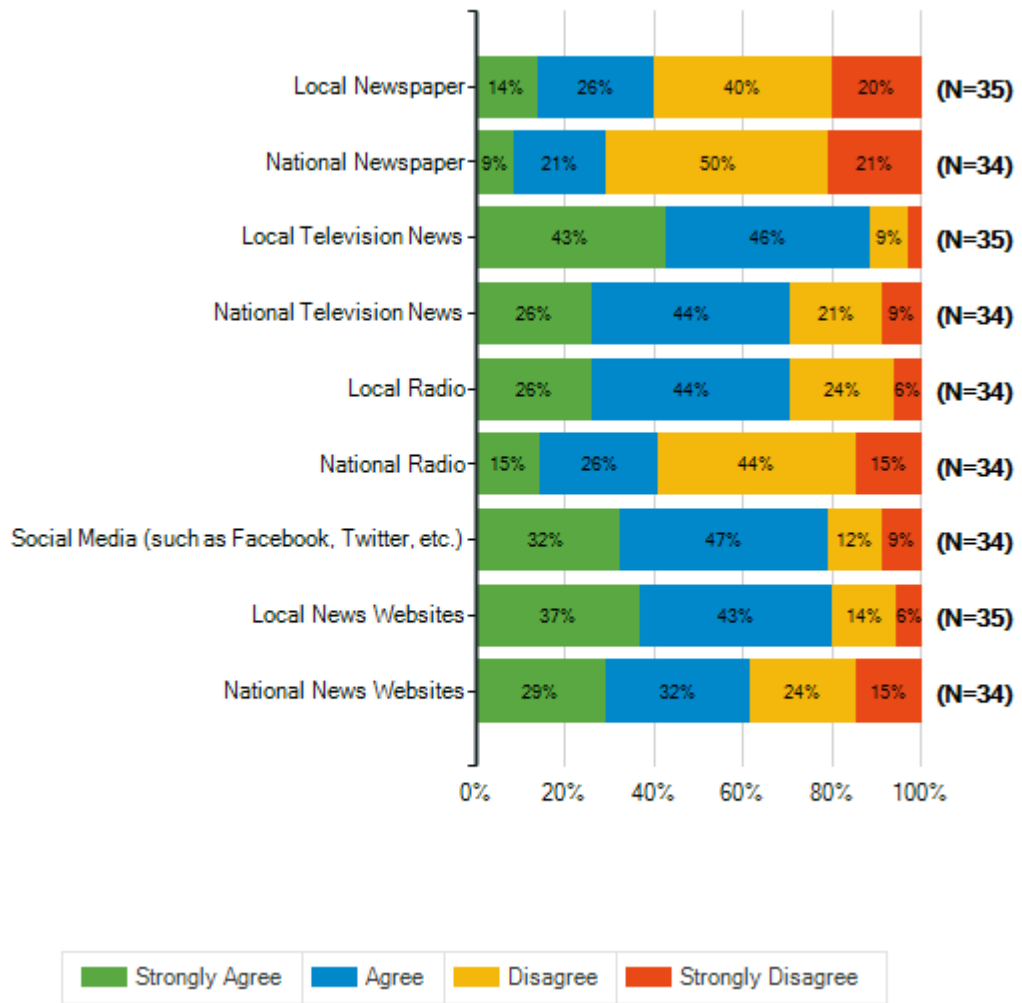
		Strongly Agree	Agree	Disagree	Strongly Disagree	Total Responses
(a)	My child is safe when riding the school bus or taking a cab.	9 31%	20 69%	0 0%	0 0%	29
(b)	My child's school bus or cab is on time most days.	10 34%	14 48%	4 14%	1 3%	29
(c)	My child's bus or cab driver is courteous and friendly.	12 41%	17 59%	0 0%	0 0%	29



Q15. Please indicate the extent to which you agree or disagree that you use the following tools to get general information on a daily basis.

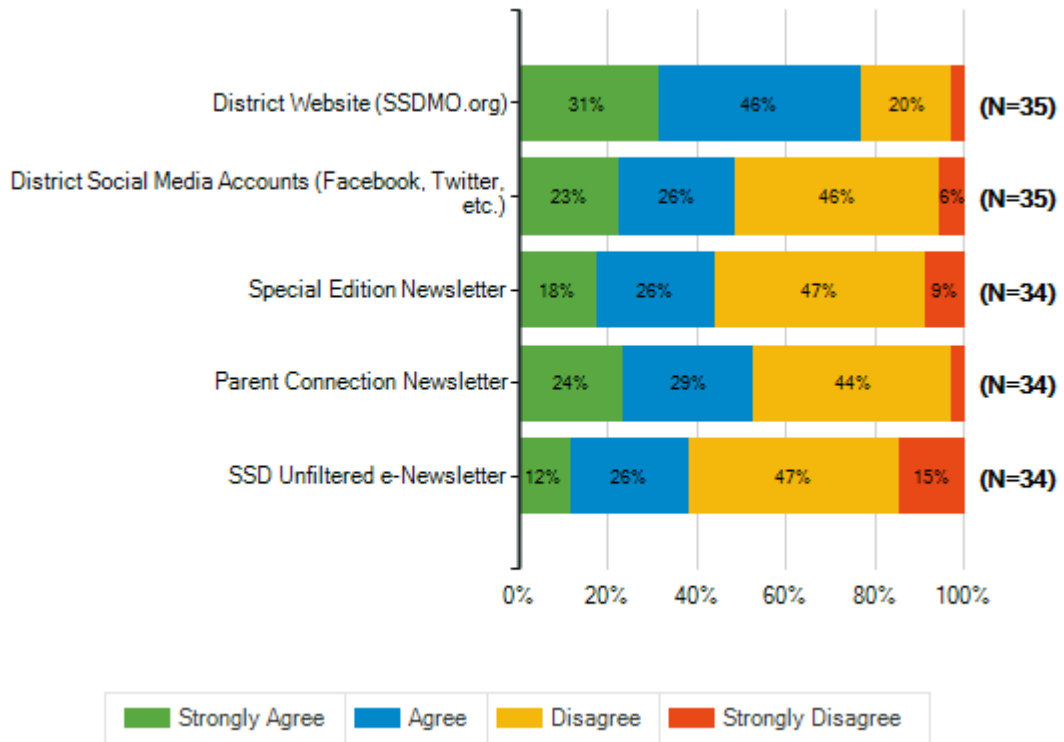
		Strongly Agree	Agree	Disagree	Strongly Disagree	Total Responses
(a)	Local Newspaper	5 14%	9 26%	14 40%	7 20%	35
(b)	National Newspaper	3 9%	7 21%	17 50%	7 21%	34
(c)	Local Television News	15 43%	16 46%	3 9%	1 3%	35
(d)	National Television News	9 26%	15 44%	7 21%	3 9%	34
(e)	Local Radio	9 26%	15 44%	8 24%	2 6%	34
(f)	National Radio	5 15%	9 26%	15 44%	5 15%	34
(g)	Social Media (such as Facebook, Twitter, etc.)	11 32%	16 47%	4 12%	3 9%	34
(h)	Local News Websites	13 37%	15 43%	5 14%	2 6%	35
(i)	National News Websites	10 29%	11 32%	8 24%	5 15%	34

Special School District of St. Louis County
 2018-19 Climate Survey Parents/Guardians – SSD Schools



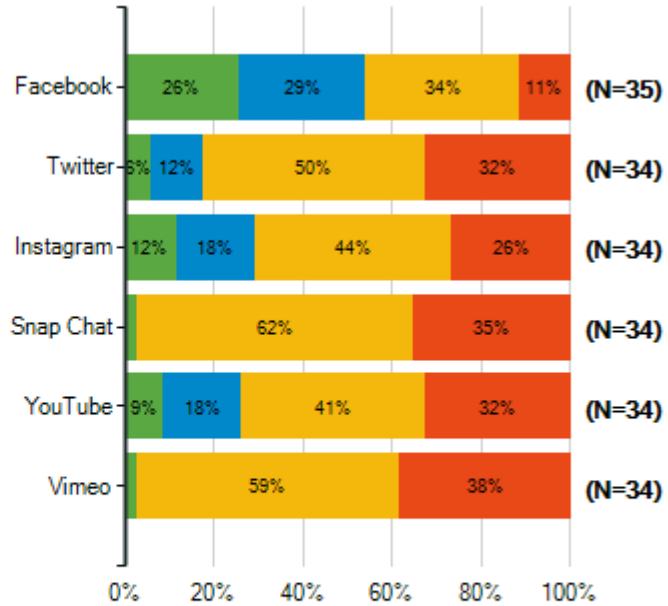
Q16. Please indicate the extent to which you agree or disagree that you use the following tools to get information about Special School District.

	Strongly Agree	Agree	Disagree	Strongly Disagree	Total Responses
(a) District Website (SSDMO.org)	11 31%	16 46%	7 20%	1 3%	35
(b) District Social Media Accounts (Facebook, Twitter, etc.)	8 23%	9 26%	16 46%	2 6%	35
(c) Special Edition Newsletter	6 18%	9 26%	16 47%	3 9%	34
(d) Parent Connection Newsletter	8 24%	10 29%	15 44%	1 3%	34
(e) SSD Unfiltered e-Newsletter	4 12%	9 26%	16 47%	5 15%	34



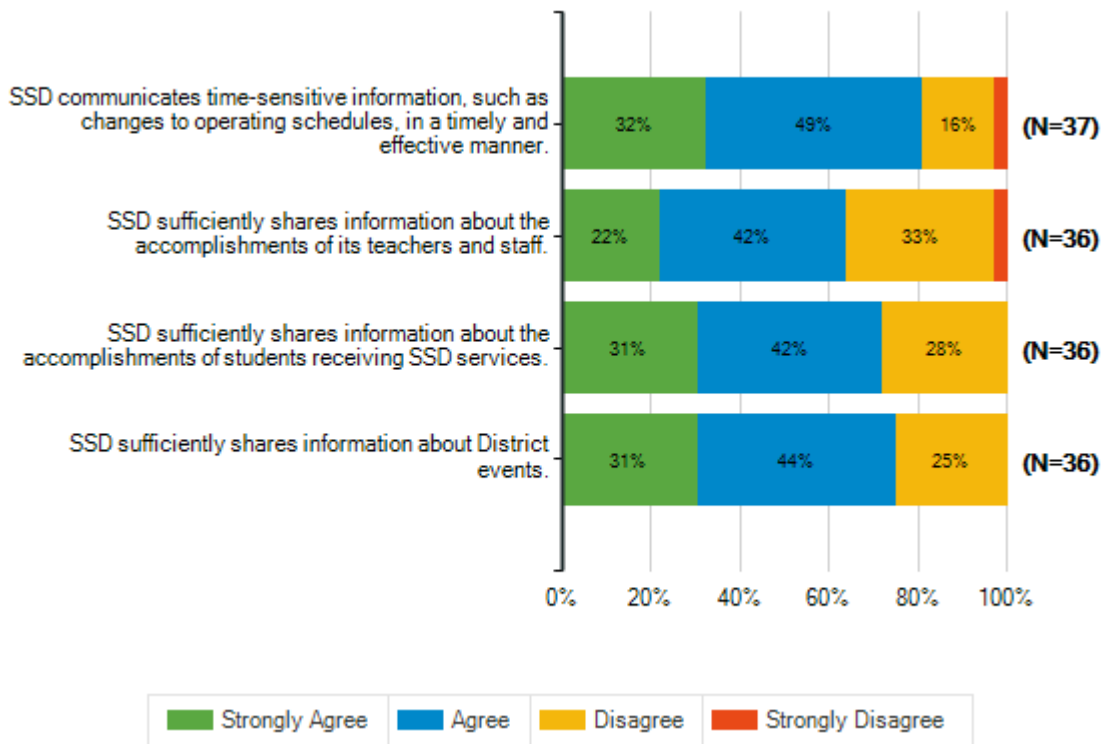
Q17. Please indicate the extent to which you agree or disagree that you would use the following social media channels to get information about Special School District.

	Strongly Agree	Agree	Disagree	Strongly Disagree	Total Responses
(a) Facebook	9 26%	10 29%	12 34%	4 11%	35
(b) Twitter	2 6%	4 12%	17 50%	11 32%	34
(c) Instagram	4 12%	6 18%	15 44%	9 26%	34
(d) Snap Chat	1 3%	0 0%	21 62%	12 35%	34
(e) YouTube	3 9%	6 18%	14 41%	11 32%	34
(f) Vimeo	1 3%	0 0%	20 59%	13 38%	34



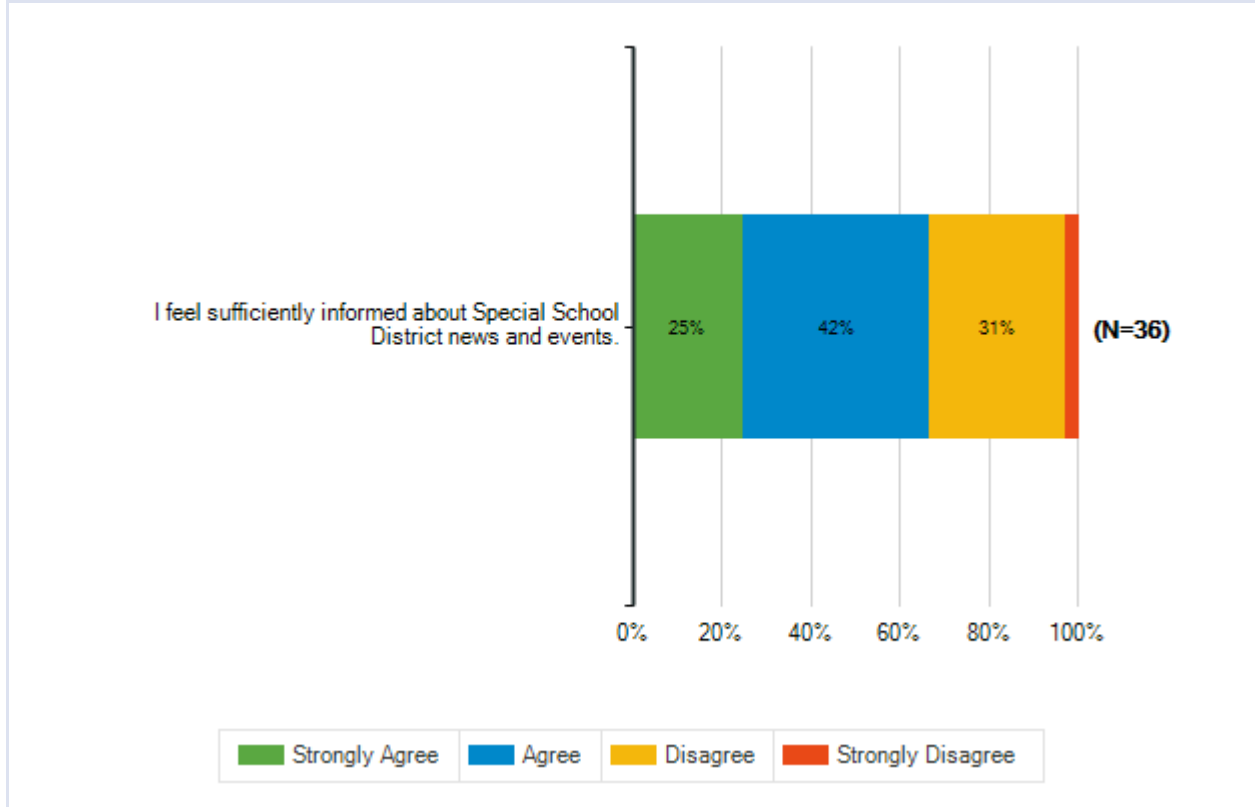
Q18. Please indicate the extent to which you agree or disagree with each of the following statements.

		Strongly Agree	Agree	Disagree	Strongly Disagree	Total Responses
(a)	SSD communicates time-sensitive information, such as changes to operating schedules, in a timely and effective manner.	12 32%	18 49%	6 16%	1 3%	37
(b)	SSD sufficiently shares information about the accomplishments of its teachers and staff.	8 22%	15 42%	12 33%	1 3%	36
(c)	SSD sufficiently shares information about the accomplishments of students receiving SSD services.	11 31%	15 42%	10 28%	0 0%	36
(d)	SSD sufficiently shares information about District events.	11 31%	16 44%	9 25%	0 0%	36



Q19. Please indicate the extent to which you agree or disagree with the following statement.

		Strongly Agree	Agree	Disagree	Strongly Disagree	Total Responses
(a)	I feel sufficiently informed about Special School District news and events.	9	15	11	1	36
		25%	42%	31%	3%	



Q21. Students receive grades of A, B, C, D, or F to report the quality of their work. What grade would you give the overall quality of your child's school? On this scale, an A is outstanding, C is average and F is failing.

Responses	Count	%
A	13	35%
B	18	49%
C	6	16%
D	0	0%
F	0	0%
Total Responses	37	

