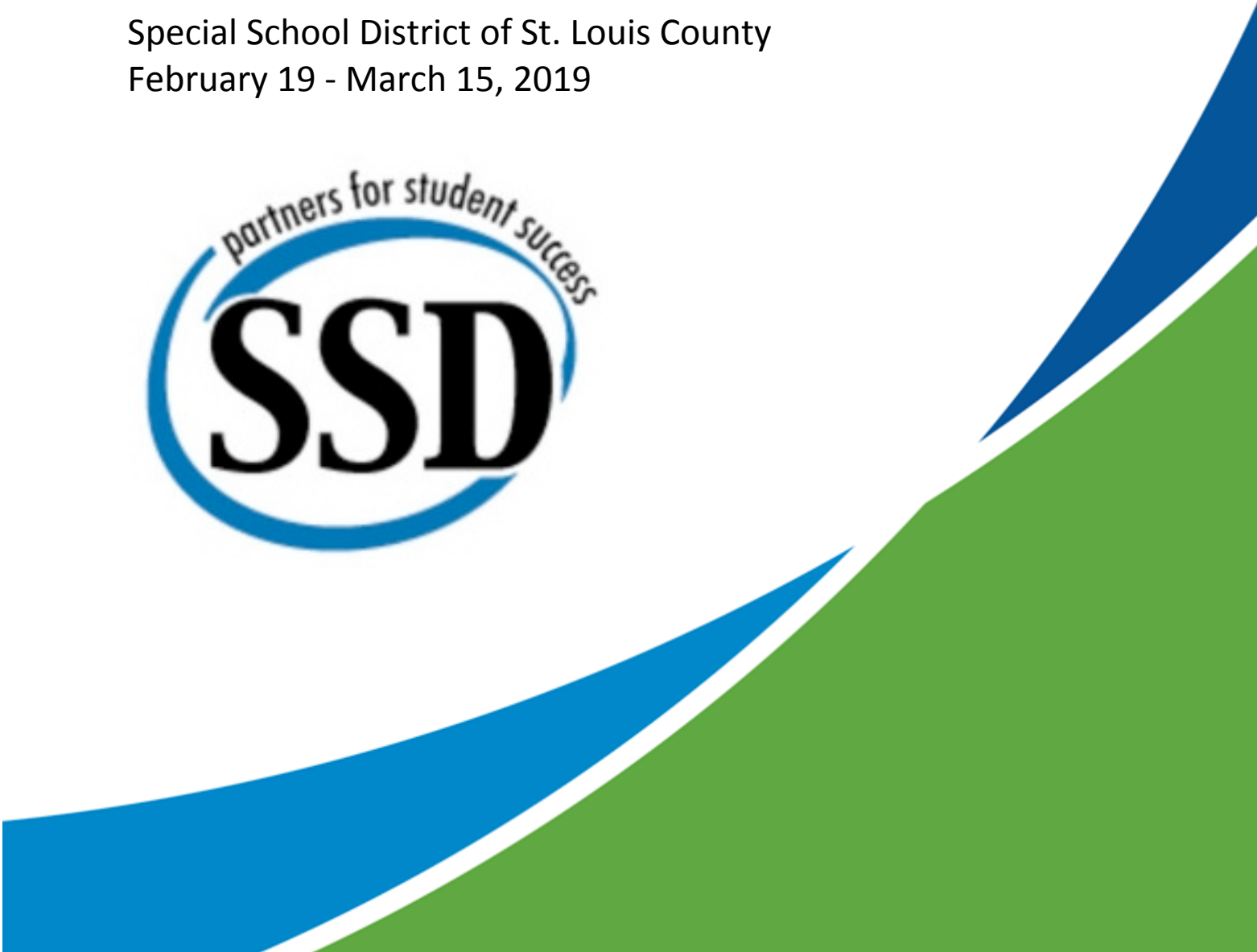


# 2018-19 Climate Survey Parents/Guardians – SSD Schools Survey Results

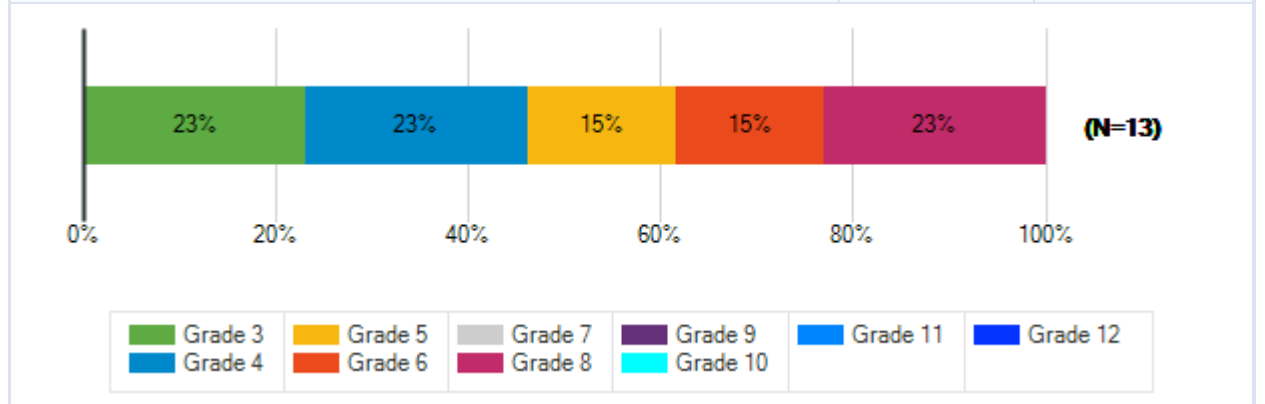
## Litzsinger School

Special School District of St. Louis County  
February 19 - March 15, 2019



**Q2. Please select your child's grade.**

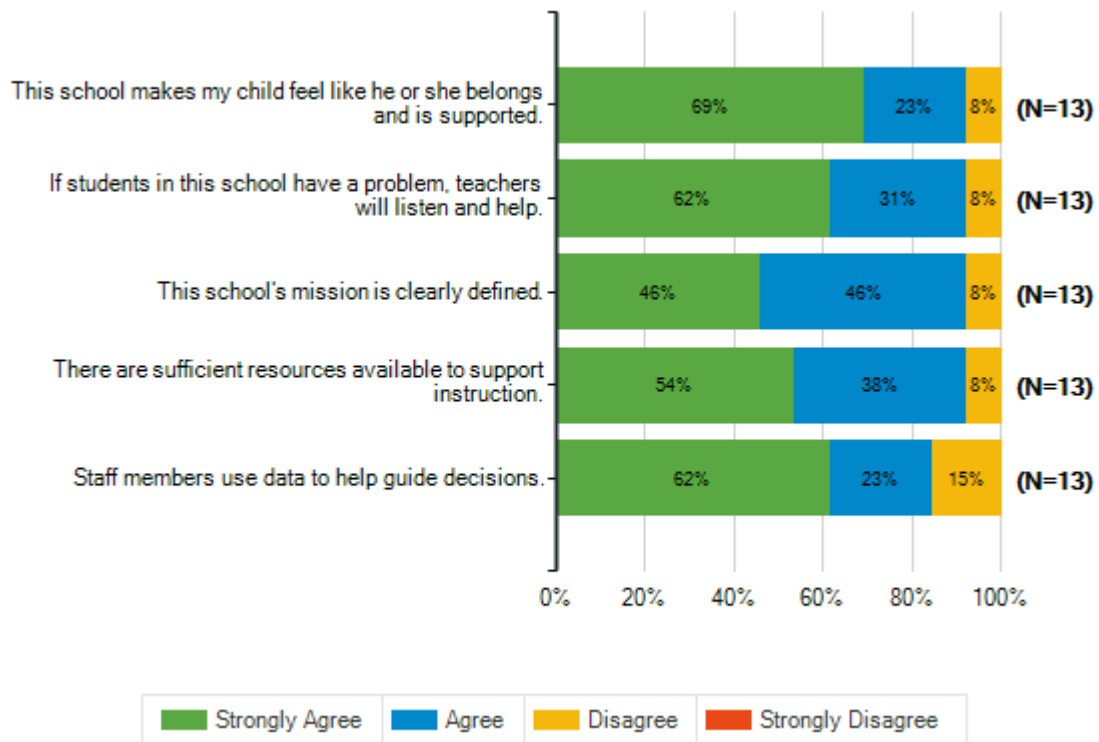
Responses	Count	%
Grade 3	3	23%
Grade 4	3	23%
Grade 5	2	15%
Grade 6	2	15%
Grade 7	0	0%
Grade 8	3	23%
Grade 9	0	0%
Grade 10	0	0%
Grade 11	0	0%
Grade 12	0	0%
<b>Total Responses</b>	<b>13</b>	



**School Satisfaction**

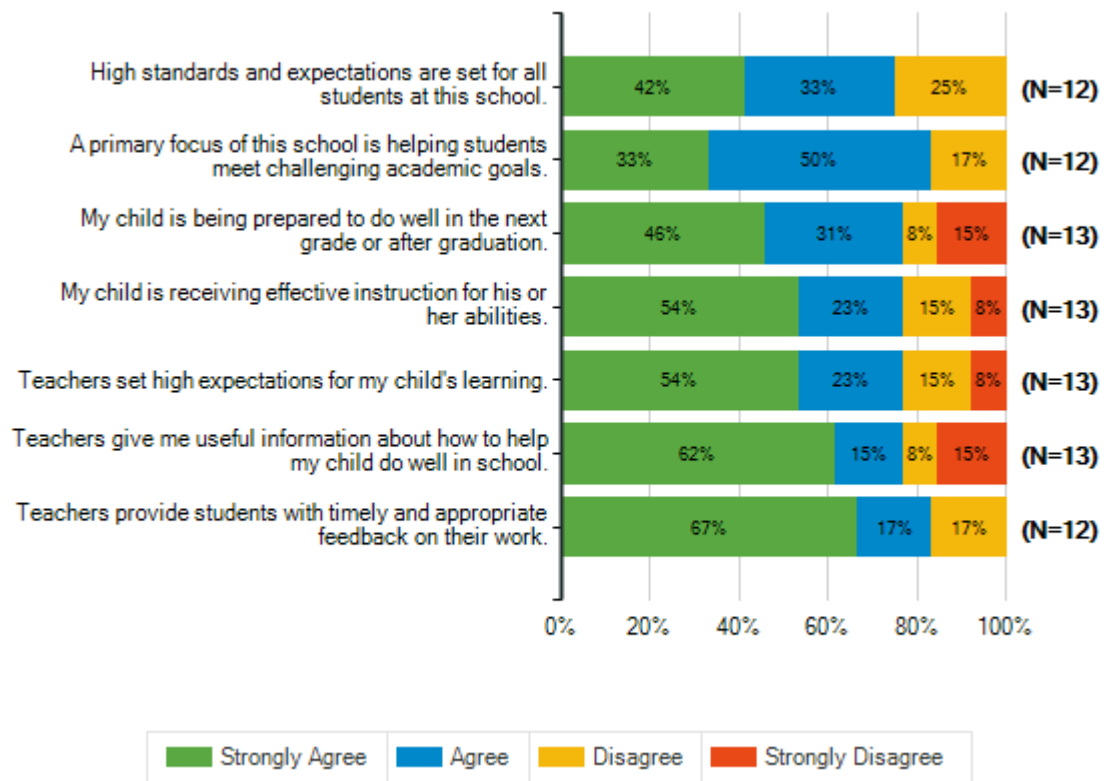
**Q3. How strongly do you agree or disagree with the following statements?**

		<b>Strongly Agree</b>	<b>Agree</b>	<b>Disagree</b>	<b>Strongly Disagree</b>	<b>Total Responses</b>
(a)	This school makes my child feel like he or she belongs and is supported.	9 69%	3 23%	1 8%	0 0%	13
(b)	If students in this school have a problem, teachers will listen and help.	8 62%	4 31%	1 8%	0 0%	13
(c)	This school's mission is clearly defined.	6 46%	6 46%	1 8%	0 0%	13
(d)	There are sufficient resources available to support instruction.	7 54%	5 38%	1 8%	0 0%	13
(e)	Staff members use data to help guide decisions.	8 62%	3 23%	2 15%	0 0%	13



<b>Academic Preparation</b>						
<b>Q4. How strongly do you agree or disagree with the following statements?</b>						
		<b>Strongly Agree</b>	<b>Agree</b>	<b>Disagree</b>	<b>Strongly Disagree</b>	<b>Total Responses</b>
(a)	High standards and expectations are set for all students at this school.	5 42%	4 33%	3 25%	0 0%	12
(b)	A primary focus of this school is helping students meet challenging academic goals.	4 33%	6 50%	2 17%	0 0%	12
(c)	My child is being prepared to do well in the next grade or after graduation.	6 46%	4 31%	1 8%	2 15%	13
(d)	My child is receiving effective instruction for his or her abilities.	7 54%	3 23%	2 15%	1 8%	13
(e)	Teachers set high expectations for my child's learning.	7 54%	3 23%	2 15%	1 8%	13
(f)	Teachers give me useful information about how to help my child do well in school.	8 62%	2 15%	1 8%	2 15%	13
(g)	Teachers provide students with timely and appropriate feedback on their work.	8 67%	2 17%	2 17%	0 0%	12

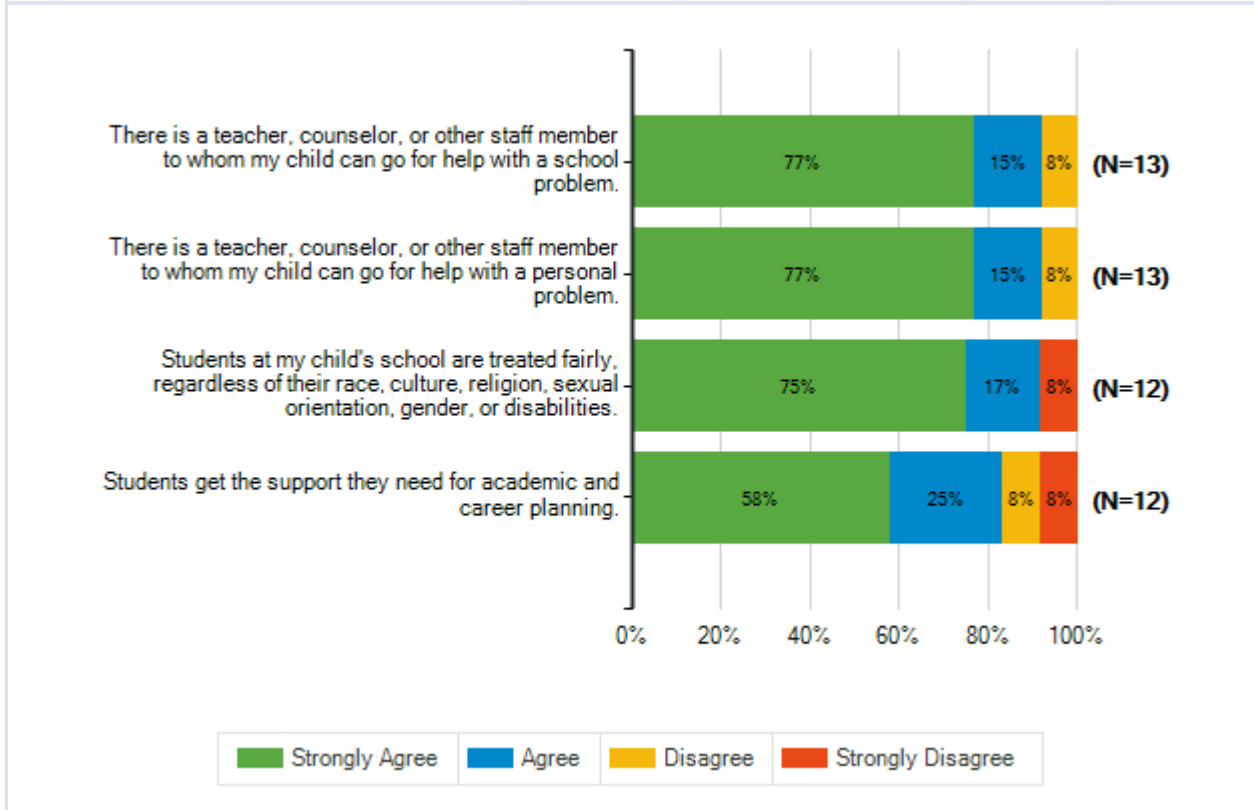
Special School District of St. Louis County  
 2018-19 Climate Survey Parents/Guardians – SSD Schools



**Student Support**

**Q5. How strongly do you agree or disagree with the following statements?**

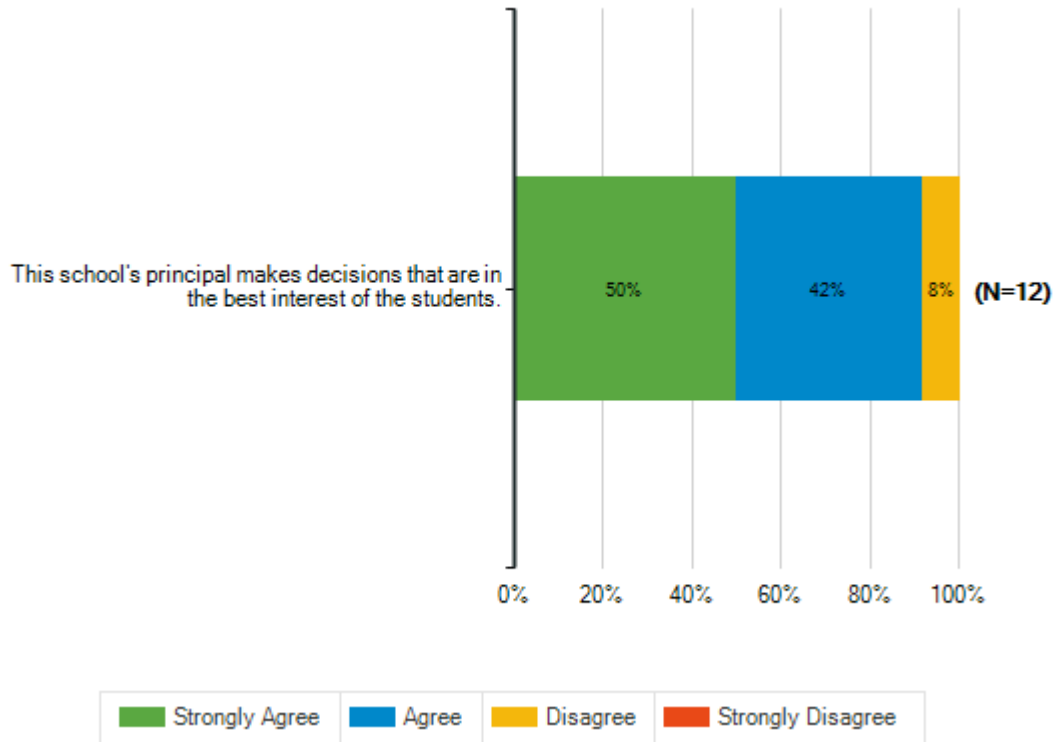
		<b>Strongly Agree</b>	<b>Agree</b>	<b>Disagree</b>	<b>Strongly Disagree</b>	<b>Total Responses</b>
(a)	There is a teacher, counselor, or other staff member to whom my child can go for help with a school problem.	10 77%	2 15%	1 8%	0 0%	13
(b)	There is a teacher, counselor, or other staff member to whom my child can go for help with a personal problem.	10 77%	2 15%	1 8%	0 0%	13
(c)	Students at my child's school are treated fairly, regardless of their race, culture, religion, sexual orientation, gender, or disabilities.	9 75%	2 17%	0 0%	1 8%	12
(d)	Students get the support they need for academic and career planning.	7 58%	3 25%	1 8%	1 8%	12



**School Principal**

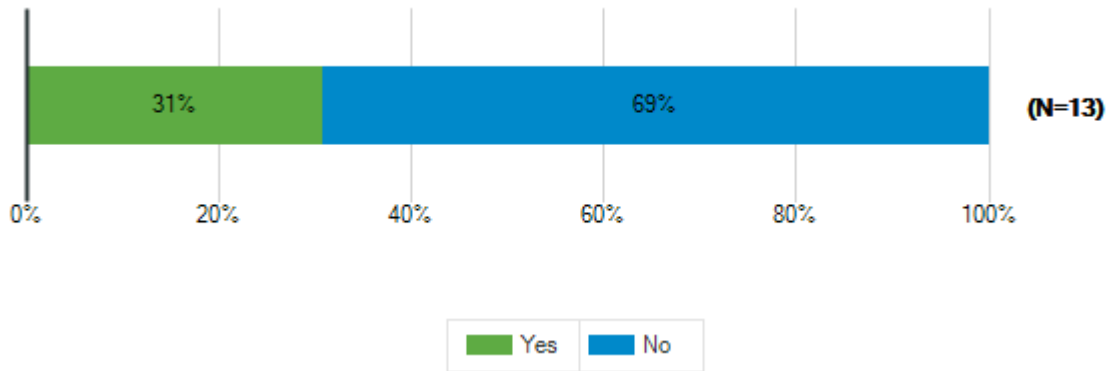
**Q6. How strongly do you agree or disagree with the following statement?**

		<b>Strongly Agree</b>	<b>Agree</b>	<b>Disagree</b>	<b>Strongly Disagree</b>	<b>Total Responses</b>
(a)	This school's principal makes decisions that are in the best interest of the students.	6 50%	5 42%	1 8%	0 0%	12



**Q7. Have you had an issue or concern to discuss with the principal or assistant principal this school year?**

Responses	Count	%
Yes	4	31%
No	9	69%
<b>Total Responses</b>	<b>13</b>	

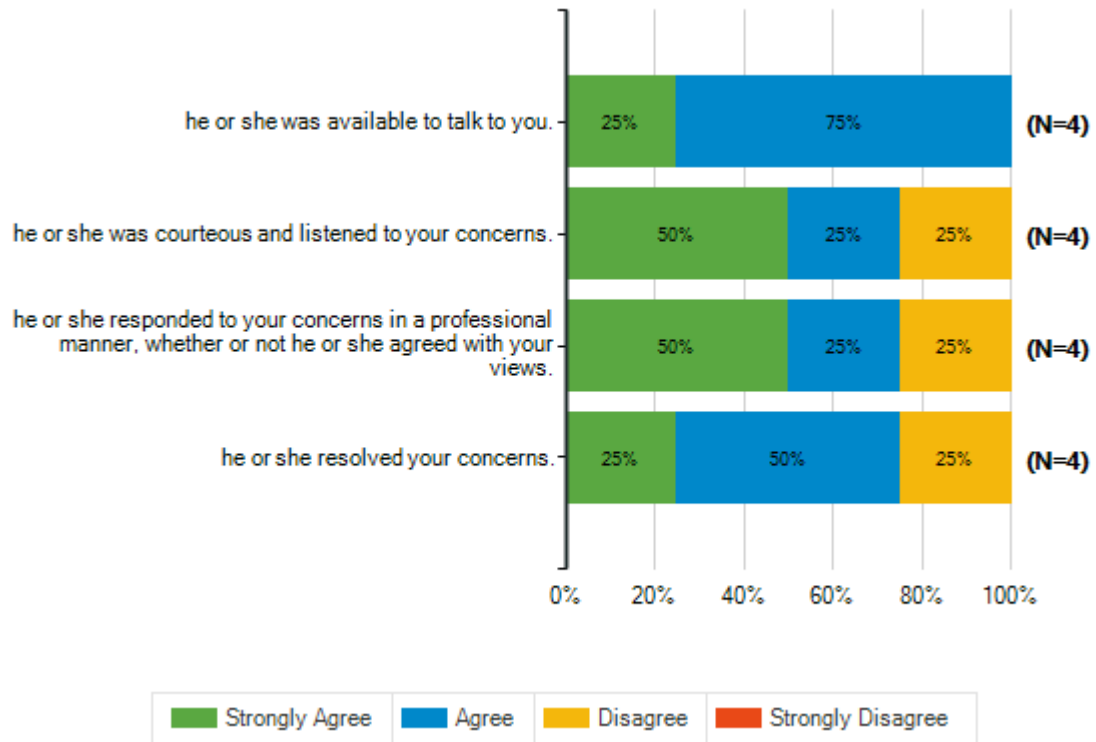




**How strongly do you agree or disagree with the following statements?**

**Q8. When you have had an issue or a concern to discuss with the principal or assistant principal ...**

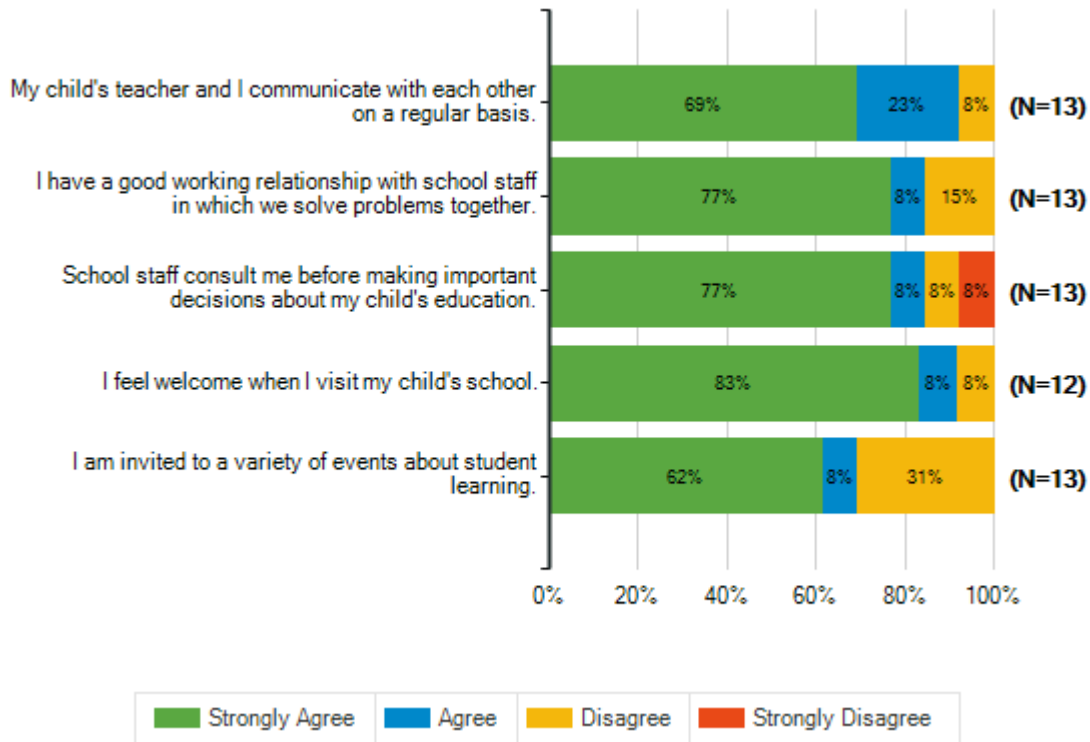
	Strongly Agree	Agree	Disagree	Strongly Disagree	Total Responses
(a) he or she was available to talk to you.	1 25%	3 75%	0 0%	0 0%	4
(b) he or she was courteous and listened to your concerns.	2 50%	1 25%	1 25%	0 0%	4
(c) he or she responded to your concerns in a professional manner, whether or not he or she agreed with your views.	2 50%	1 25%	1 25%	0 0%	4
(d) he or she resolved your concerns.	1 25%	2 50%	1 25%	0 0%	4



**Parent and Family Engagement**

**Q9. How strongly do you agree or disagree with the following statements?**

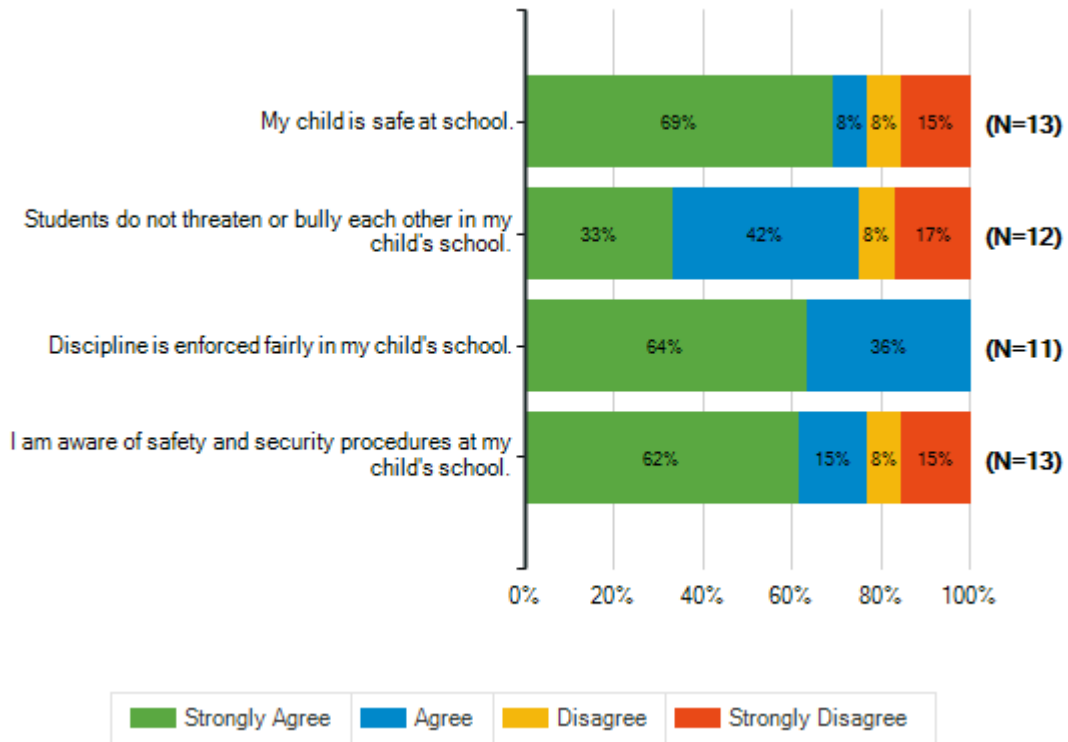
		<b>Strongly Agree</b>	<b>Agree</b>	<b>Disagree</b>	<b>Strongly Disagree</b>	<b>Total Responses</b>
(a)	My child's teacher and I communicate with each other on a regular basis.	9 69%	3 23%	1 8%	0 0%	13
(b)	I have a good working relationship with school staff in which we solve problems together.	10 77%	1 8%	2 15%	0 0%	13
(c)	School staff consult me before making important decisions about my child's education.	10 77%	1 8%	1 8%	1 8%	13
(d)	I feel welcome when I visit my child's school.	10 83%	1 8%	1 8%	0 0%	12
(e)	I am invited to a variety of events about student learning.	8 62%	1 8%	4 31%	0 0%	13



**Safety and Behavior**

**Q10. How strongly do you agree or disagree with the following statements?**

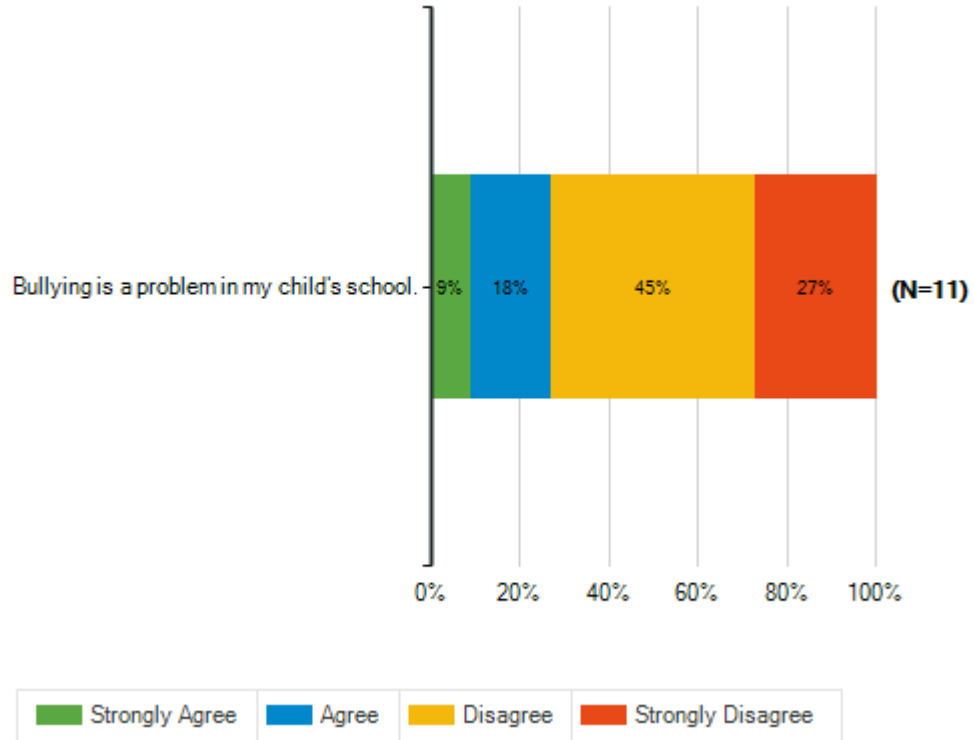
	Strongly Agree	Agree	Disagree	Strongly Disagree	Total Responses
(a) My child is safe at school.	9 69%	1 8%	1 8%	2 15%	13
(b) Students do not threaten or bully each other in my child's school.	4 33%	5 42%	1 8%	2 17%	12
(c) Discipline is enforced fairly in my child's school.	7 64%	4 36%	0 0%	0 0%	11
(d) I am aware of safety and security procedures at my child's school.	8 62%	2 15%	1 8%	2 15%	13



**Safety and Behavior**

**Q11. How strongly do you agree or disagree with the following statement?**

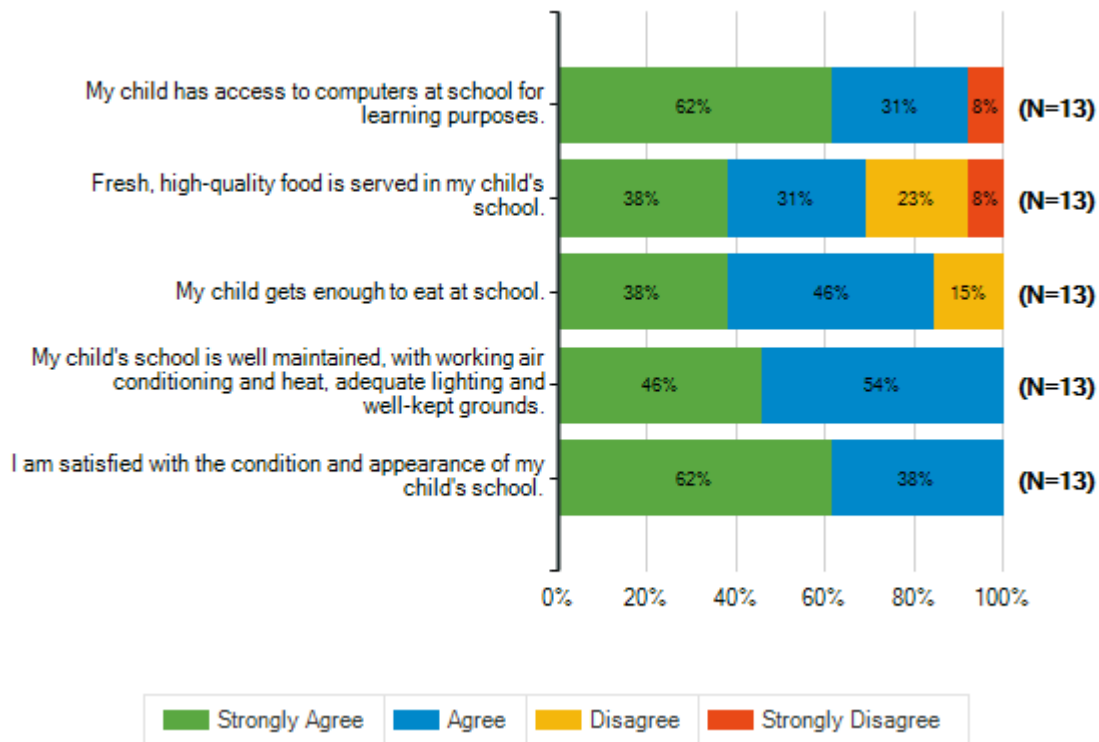
	<b>Strongly Agree</b>	<b>Agree</b>	<b>Disagree</b>	<b>Strongly Disagree</b>	<b>Total Responses</b>
(a) Bullying is a problem in my child's school.	1 9%	2 18%	5 45%	3 27%	11

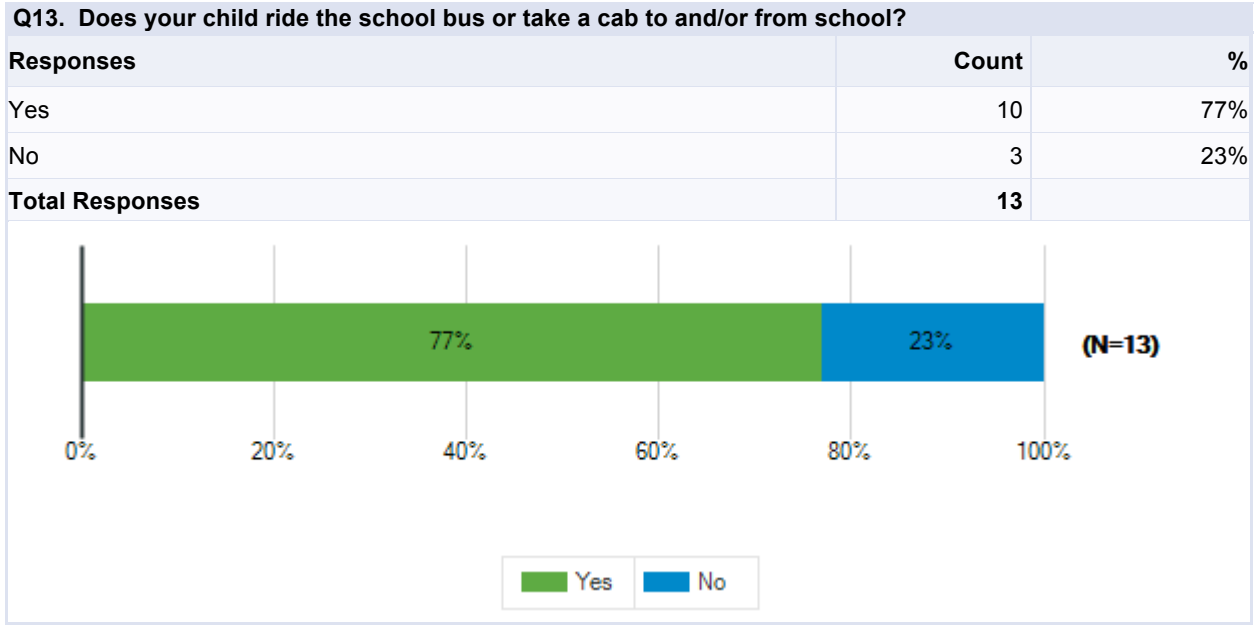


**School Operations**

**Q12. How strongly do you agree or disagree with the following statements?**

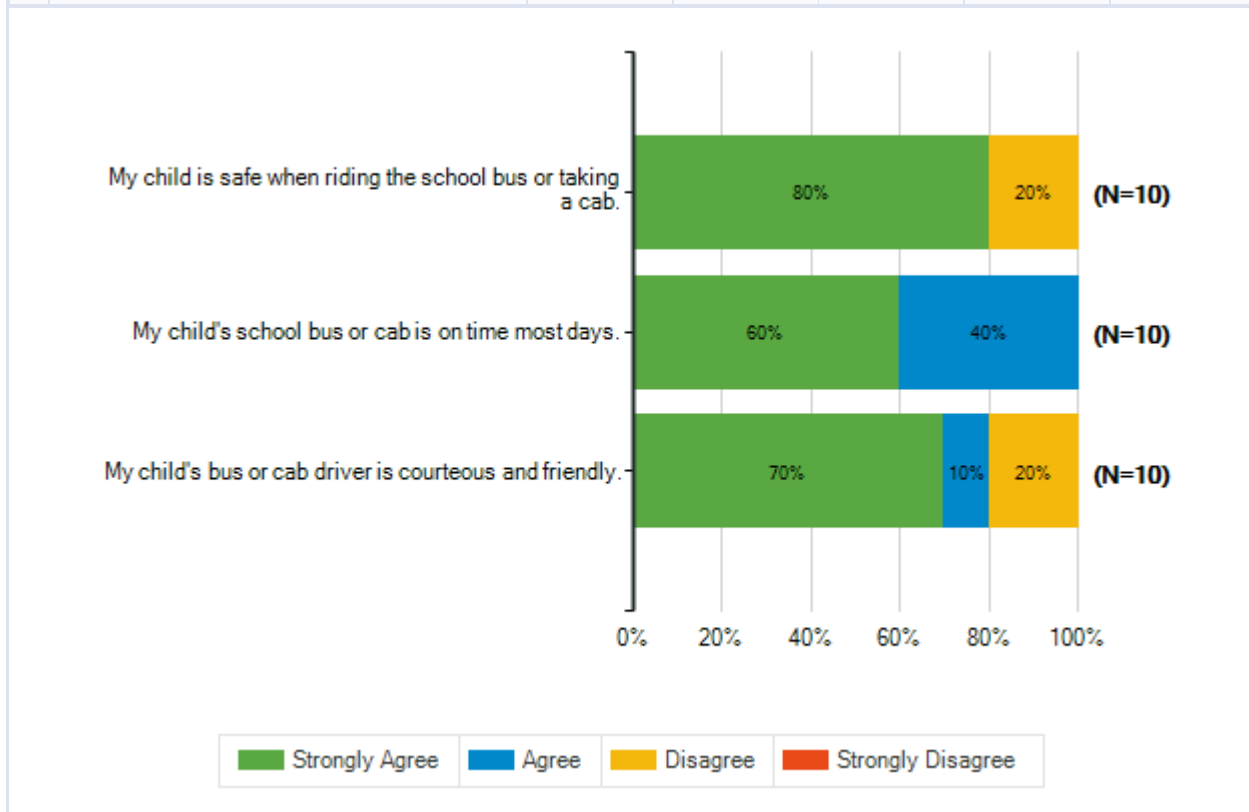
		<b>Strongly Agree</b>	<b>Agree</b>	<b>Disagree</b>	<b>Strongly Disagree</b>	<b>Total Responses</b>
(a)	My child has access to computers at school for learning purposes.	8 62%	4 31%	0 0%	1 8%	13
(b)	Fresh, high-quality food is served in my child's school.	5 38%	4 31%	3 23%	1 8%	13
(c)	My child gets enough to eat at school.	5 38%	6 46%	2 15%	0 0%	13
(d)	My child's school is well maintained, with working air conditioning and heat, adequate lighting and well-kept grounds.	6 46%	7 54%	0 0%	0 0%	13
(e)	I am satisfied with the condition and appearance of my child's school.	8 62%	5 38%	0 0%	0 0%	13





**Q14. How strongly do you agree or disagree with the statements below?**

		<b>Strongly Agree</b>	<b>Agree</b>	<b>Disagree</b>	<b>Strongly Disagree</b>	<b>Total Responses</b>
(a)	My child is safe when riding the school bus or taking a cab.	8 80%	0 0%	2 20%	0 0%	10
(b)	My child's school bus or cab is on time most days.	6 60%	4 40%	0 0%	0 0%	10
(c)	My child's bus or cab driver is courteous and friendly.	7 70%	1 10%	2 20%	0 0%	10

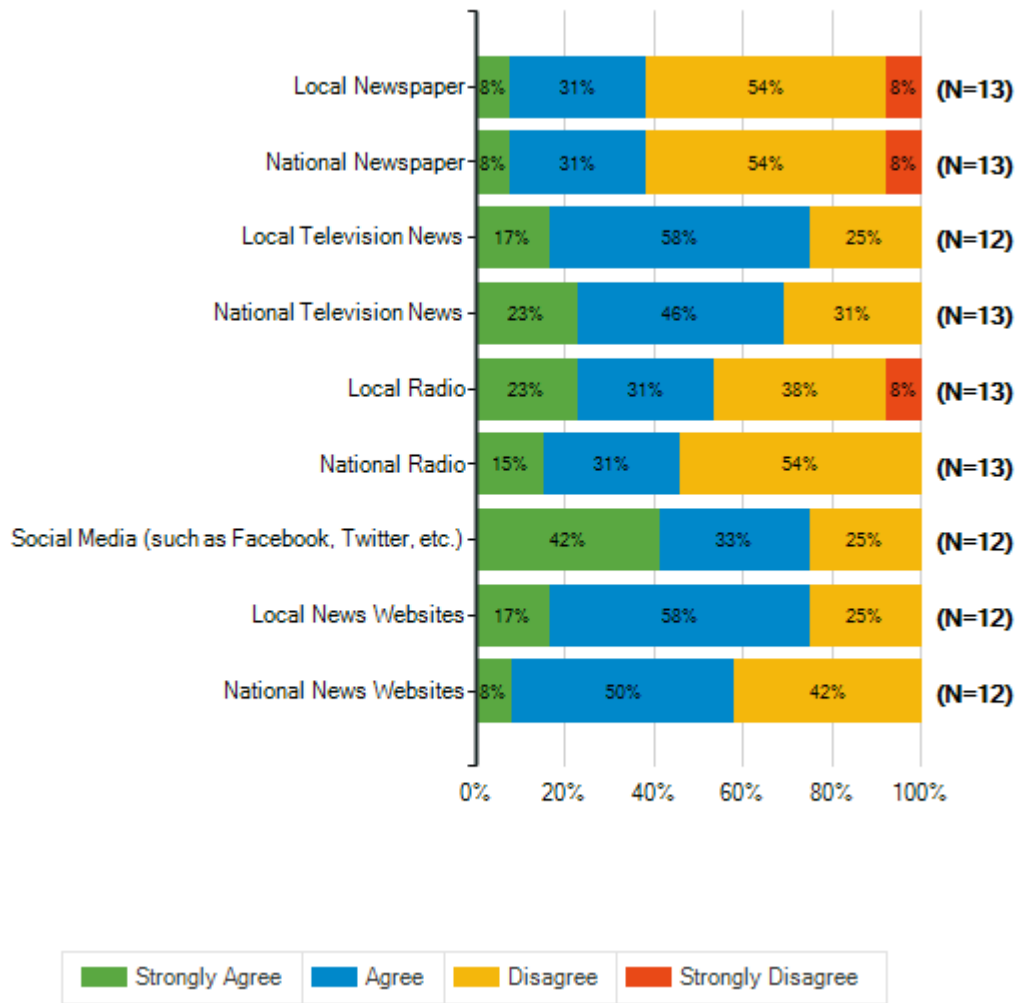


**Q15. Please indicate the extent to which you agree or disagree that you use the following tools to get general information on a daily basis.**

	<b>Strongly Agree</b>	<b>Agree</b>	<b>Disagree</b>	<b>Strongly Disagree</b>	<b>Total Responses</b>
(a) Local Newspaper	1 8%	4 31%	7 54%	1 8%	13
(b) National Newspaper	1 8%	4 31%	7 54%	1 8%	13
(c) Local Television News	2 17%	7 58%	3 25%	0 0%	12
(d) National Television News	3 23%	6 46%	4 31%	0 0%	13
(e) Local Radio	3 23%	4 31%	5 38%	1 8%	13
(f) National Radio	2 15%	4 31%	7 54%	0 0%	13
(g) Social Media (such as Facebook, Twitter, etc.)	5 42%	4 33%	3 25%	0 0%	12
(h) Local News Websites	2 17%	7 58%	3 25%	0 0%	12
(i) National News Websites	1 8%	6 50%	5 42%	0 0%	12

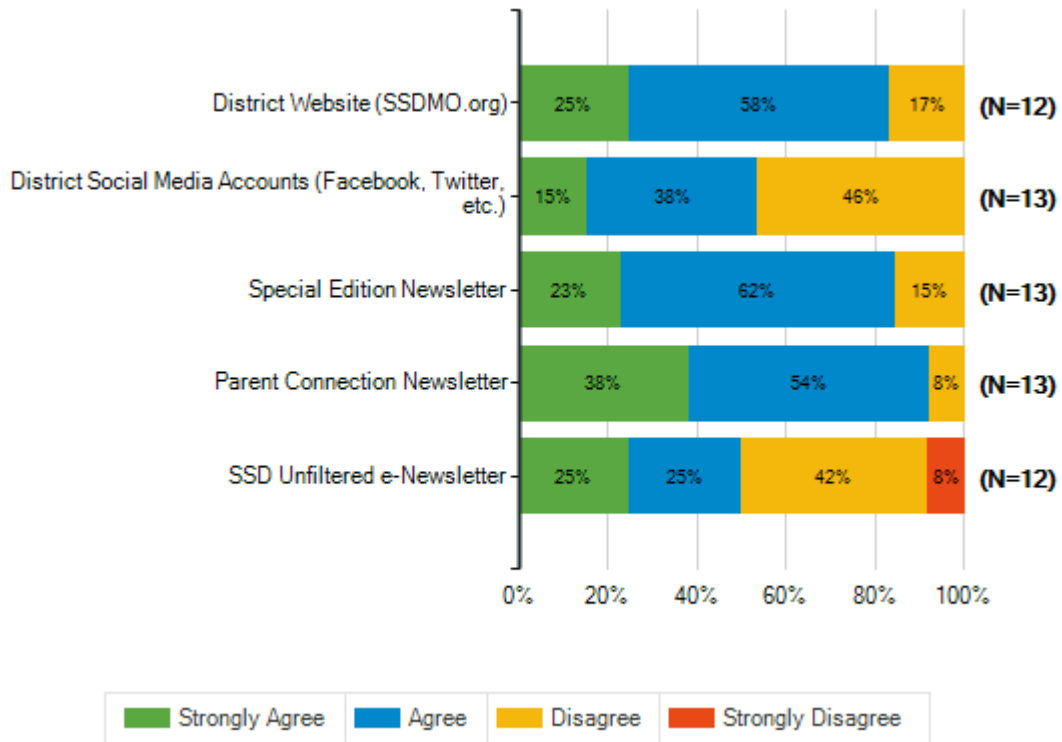


Special School District of St. Louis County  
 2018-19 Climate Survey Parents/Guardians – SSD Schools



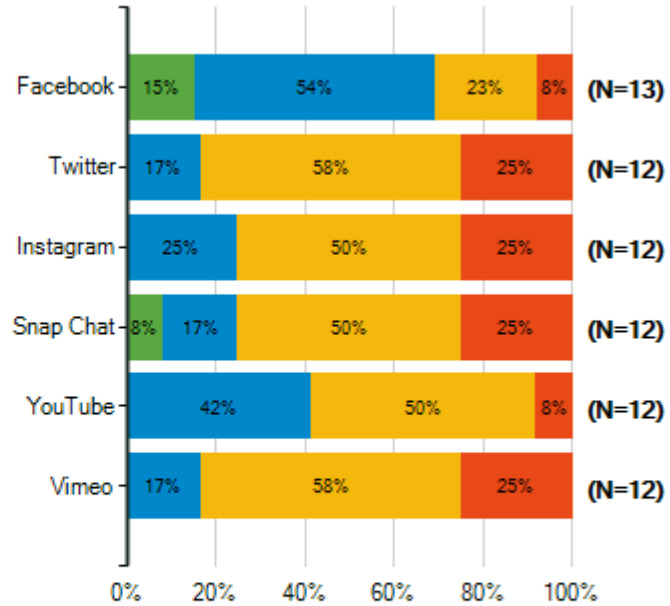
**Q16. Please indicate the extent to which you agree or disagree that you use the following tools to get information about Special School District.**

	Strongly Agree	Agree	Disagree	Strongly Disagree	Total Responses
(a) District Website (SSDMO.org)	3 25%	7 58%	2 17%	0 0%	12
(b) District Social Media Accounts (Facebook, Twitter, etc.)	2 15%	5 38%	6 46%	0 0%	13
(c) Special Edition Newsletter	3 23%	8 62%	2 15%	0 0%	13
(d) Parent Connection Newsletter	5 38%	7 54%	1 8%	0 0%	13
(e) SSD Unfiltered e-Newsletter	3 25%	3 25%	5 42%	1 8%	12



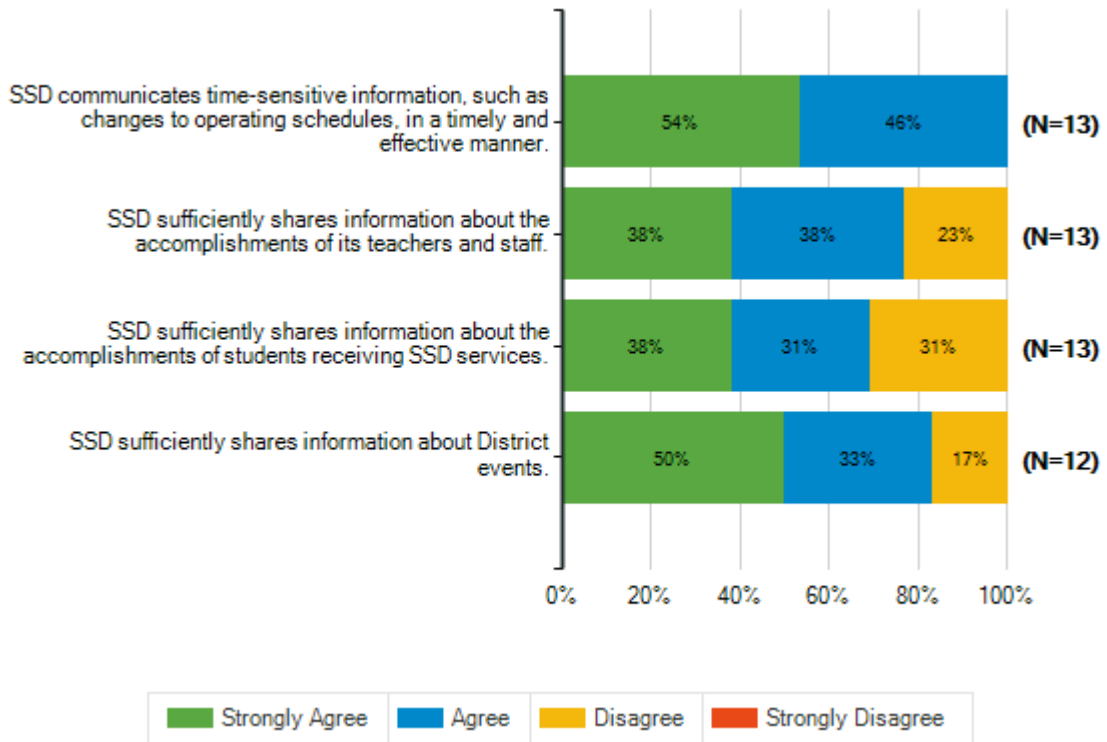
**Q17. Please indicate the extent to which you agree or disagree that you would use the following social media channels to get information about Special School District.**

	Strongly Agree	Agree	Disagree	Strongly Disagree	Total Responses
(a) Facebook	2 15%	7 54%	3 23%	1 8%	13
(b) Twitter	0 0%	2 17%	7 58%	3 25%	12
(c) Instagram	0 0%	3 25%	6 50%	3 25%	12
(d) Snap Chat	1 8%	2 17%	6 50%	3 25%	12
(e) YouTube	0 0%	5 42%	6 50%	1 8%	12
(f) Vimeo	0 0%	2 17%	7 58%	3 25%	12



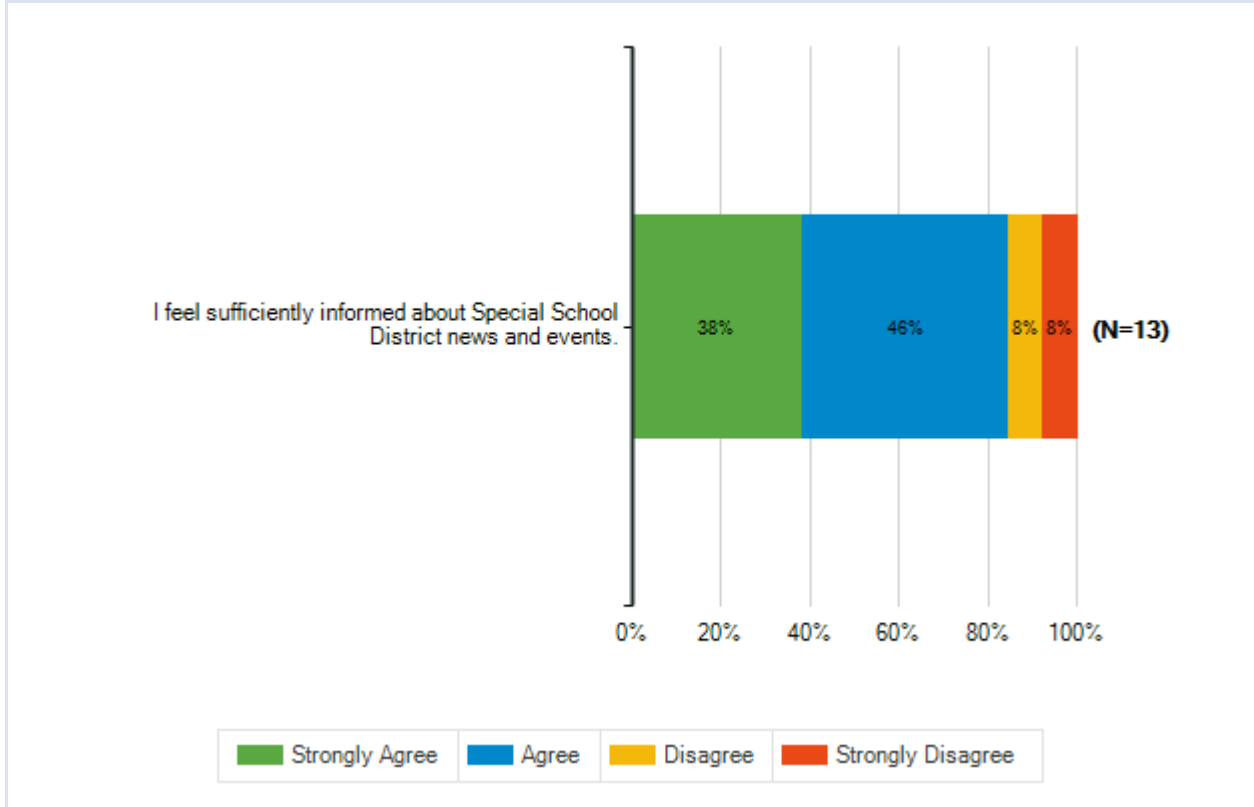
**Q18. Please indicate the extent to which you agree or disagree with each of the following statements.**

		<b>Strongly Agree</b>	<b>Agree</b>	<b>Disagree</b>	<b>Strongly Disagree</b>	<b>Total Responses</b>
(a)	SSD communicates time-sensitive information, such as changes to operating schedules, in a timely and effective manner.	7 54%	6 46%	0 0%	0 0%	13
(b)	SSD sufficiently shares information about the accomplishments of its teachers and staff.	5 38%	5 38%	3 23%	0 0%	13
(c)	SSD sufficiently shares information about the accomplishments of students receiving SSD services.	5 38%	4 31%	4 31%	0 0%	13
(d)	SSD sufficiently shares information about District events.	6 50%	4 33%	2 17%	0 0%	12



**Q19. Please indicate the extent to which you agree or disagree with the following statement.**

		<b>Strongly Agree</b>	<b>Agree</b>	<b>Disagree</b>	<b>Strongly Disagree</b>	<b>Total Responses</b>
(a)	I feel sufficiently informed about Special School District news and events.	5 38%	6 46%	1 8%	1 8%	13



**Q21. Students receive grades of A, B, C, D, or F to report the quality of their work. What grade would you give the overall quality of your child's school? On this scale, an A is outstanding, C is average and F is failing.**

Responses	Count	%
A	9	69%
B	2	15%
C	0	0%
D	2	15%
F	0	0%
<b>Total Responses</b>	<b>13</b>	

