

Pathway to Premier Facilities

Richland School District Two

WELCOME ELECTED OFFICIALS

Agenda

- Lunch
- District Presentation
- Feedback and Questions



RICHLAND TWO'S MISSION, VISION AND CORE VALUES

Our Mission

In partnership with our community, we develop global citizens of tomorrow — citizens who are prepared to lead and excel in their chosen pathways.

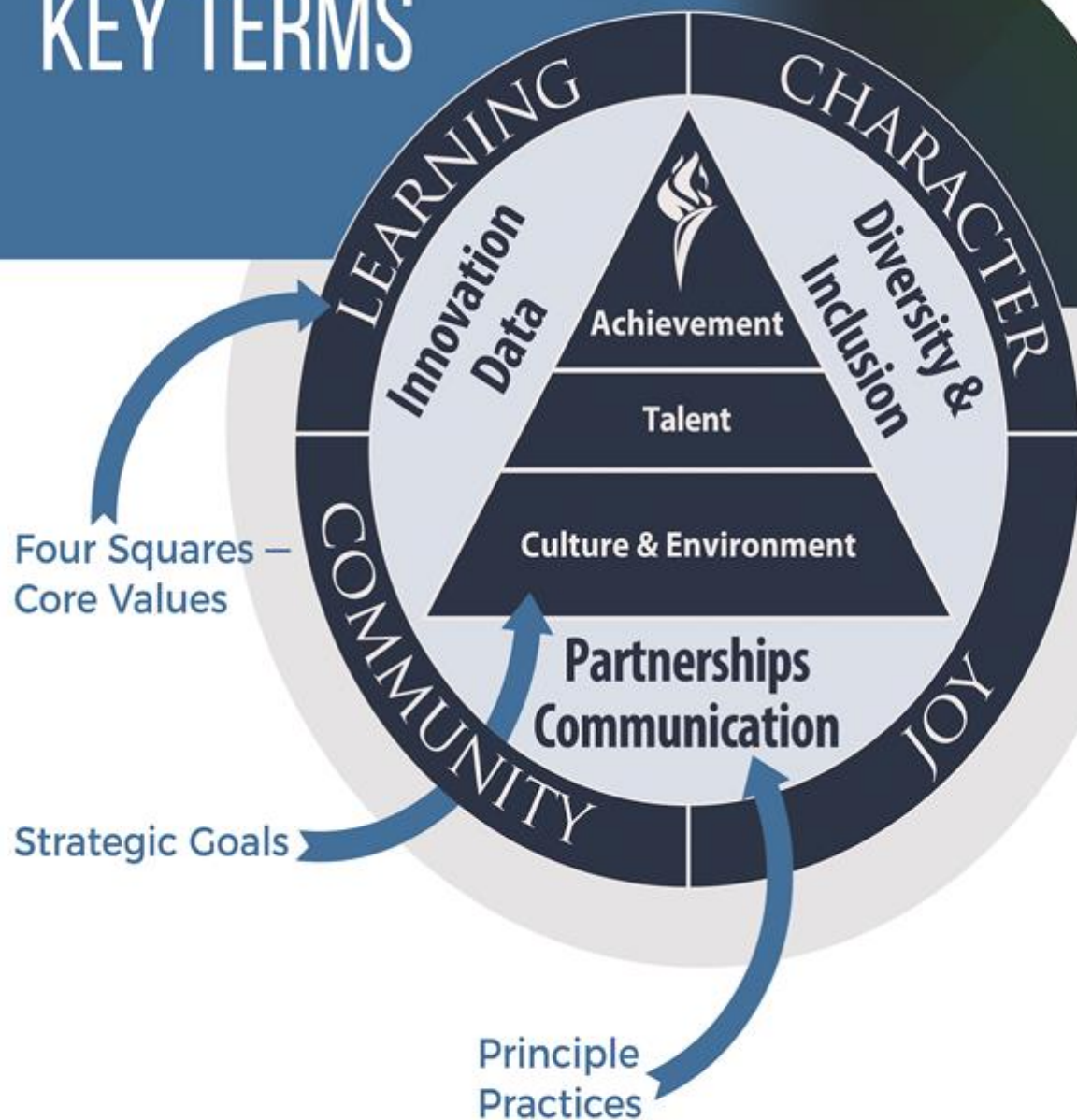
Our Vision

Richland Two strives to be the premier school district — a learning and working environment where all partners are committed to creating, sustaining, and investing in a culture and environment of excellence and where all are afforded the opportunity to maximize their gifts and talents as they pursue their pathways to purpose.

Our Core Values

The Four Squares — Learning, Character, Community and Joy — embody everything that we do.

KEY TERMS



GUIDING PRINCIPLES —

OUR RICHLAND TWO SCHOOL FACILITIES WILL BE:

- Safe and secure
- Student-centered
- Welcoming and supportive to the community
- Flexible and multi-use
- Cutting-edge, innovative and joyful
- Interdisciplinary and collaborative
- Supportive of personal pathways
- Accessible
- Inclusive
- Sustainable
- Reflective of health and wellness
- Cost-effective and efficient



Phase 1 – Data Collection and Analysis (2016–2017)

- Update on Facility Study and 8% needs
(Spring 2016, Fall 2017)
- Demographic Study (*Fall 2017*) – analysis of residential growth
- Programming Study (*Fall 2017*) – analysis of how facilities support instructional programs
- Board Education Sessions
(Fall 2016, Spring 2017)
- Enrollment and Population Projections (*Ongoing*)
- Facility Visits (*2016/2017*)

Phase 2 – Partner Conversations & Feedback

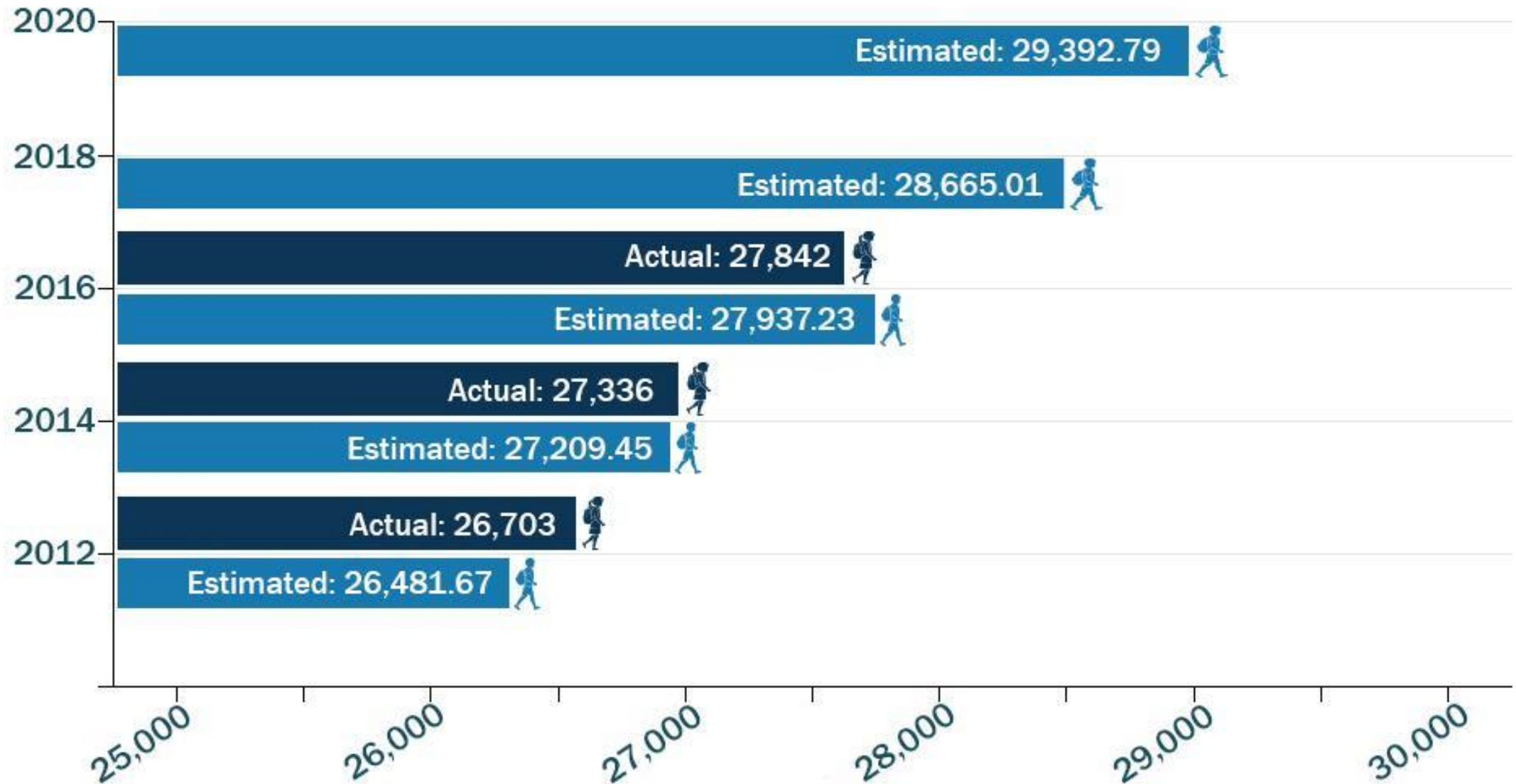
- Five Cluster Meetings (*Fall 2017*)
- Survey (*Fall 2017*)
- Internal and External Understanding and Feedback (*Fall 17, Winter 18*)
- Communications Plan (*Fall 17, Winter 18*)

Phase 3 – Finalize Facility Plan – 2018

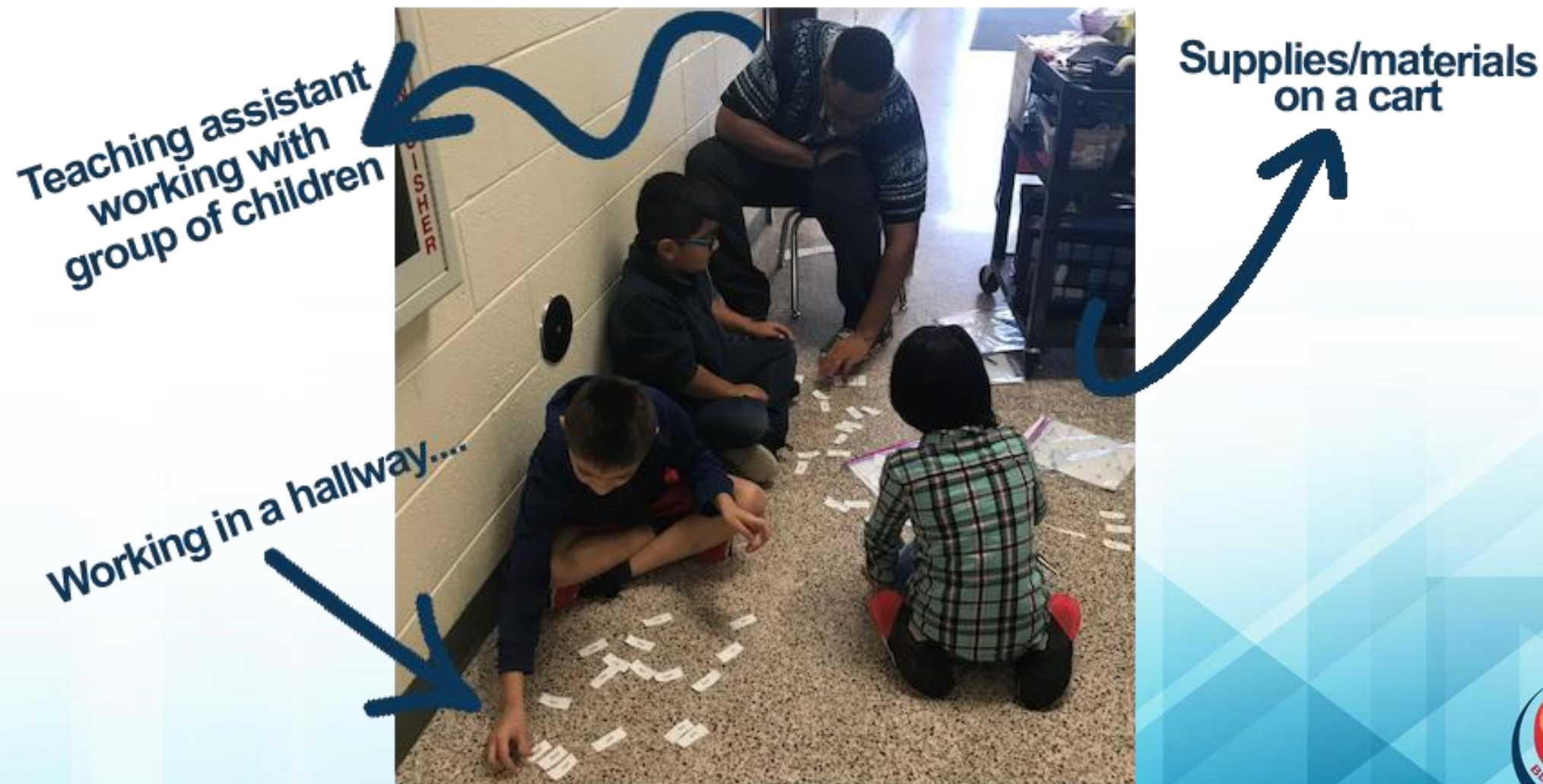
- **Cost Estimates on Projects (February)**
- **Prioritizing Needs/Areas of Focus (January–April)**
 - Safety/Security**
 - Growth**
 - Learning Spaces**
 - Athletic/Arts**
- **Finalization of 10-Year Facility Plan (May)**
- **Development of Funding Plan (Summer)**



Estimated Total Enrollment



Why we need flexible learning spaces?



- Are student-centered
- Adapt to change
- Support 21st century skills
- Are safe and secure
- Support community use
- Are flexible....at many levels
 - curricular
 - spatially
 - group size
 - furniture
- Are sustainable
- Support interdisciplinary projects
- Are connected...at many levels
- Encourage exploration
- Support collaboration and innovation
- Improve student performance

Future Ready Schools



Athletics/Arts



Development of Funding Plan

- **Confirm Priorities**
- **Focus Groups Feedback**
- **Feedback from Safety Summit**
- **Needs of the District**
- **Effect on Taxpayer**

Summary of Feedback Focus Groups

- **Safety and Security Top Priority**
- **Equitable Learning Spaces**
- **Growth only important to those in high growth areas**

Summary of Funding Plan

- **Safety/Security – \$285 million**
 - Secure Entrances,
 - Replacement Schools
 - Maintenance
 - Reduce use of portables
- **Improvements supporting academics – \$57.6 million**
 - Renovations for Equitable Learning Spaces, Magnets, etc
- **Athletics/Arts – \$86 million**
 - Football Stadiums
 - Field Houses
 - Performing Arts
- **Transportation – \$6.5 million**
 - New Buses
 - Security Improvements
 - Facility Improvements
- **Technology – \$25 million**
 - Infrastructure
 - Sustainability
 - School Improvements

Total Cost of Funding Plan

- Total Cost = \$462,252,000
- Impact on Taxpayer
 - Home Owner - \$100,000 home = \$40 a year (\$3 a month)
 - Car Owner - \$20,000 car = \$12 a year (\$1 a month)

Pathway to Premier Facilities

**Richland School District Two
2017 Facility Study**