

Pembroke High School

80 Learning Lane
Pembroke, MA 02359
Telephone: 781-293-9281 / FAX: 781-294-8431
CEEB Code: 221741
www.pembrokek12.org



Pembroke Public Schools

COVID STATEMENT

The 2021-2022 school year began on September 14, 2020 using a hybrid and remote learning model. Students had the option to attend in person classes two times per week and participate in a remote learning model using the Google platform on their remote learning days. Students also had the option to remain fully remote and utilize the online programs including Edgenuity and Fuel Education for their online courses. Grading was based on school policies established as if it were a “normal” school year. Mid-year and final exams were not given.

Pembroke High School Profile (2023-2024)

Location: Pembroke is a suburban community located in the South Shore area of southeastern Massachusetts. The town is located 26 miles south of Boston. Pembroke is a fast growing community with a population exceeding 18,000 residents. The town is accessible to the MBTA commuter rail service into Boston. A majority of Pembroke residents are in professional or business occupations. The Pembroke Public School System consists of three elementary schools, one middle school, and one high school.

School: Pembroke High School is committed to providing rigorous educational programs and services. Pembroke is a dynamic and progressive 9-12 comprehensive high school. Currently, there are approximately 714 students enrolled at Pembroke High School. The school year consists of two semesters and four quarters. Formerly a member of the Silver Lake Regional School District, Pembroke High School opened in 2004.

Advanced Placement Program

AP Biology
AP Calculus AB
AP Calculus BC
AP Chemistry
AP Computer Science A
AP Computer Science Principles
AP European History
AP French
AP Government & Politics
AP Language & Composition
AP Latin
AP Literature & Composition
AP Physics
AP Psychology
AP Spanish
AP Statistics
AP Studio Art
AP US History

Graduation Requirements

In order to qualify for graduation from Pembroke High School, students must earn a minimum of 88 credits. Year-long courses earn 4 credits, semester courses earn 2 credits. Students must also pass the Massachusetts Comprehensive Assessment System (MCAS).

Student must also successfully complete:

4 years of English
4 years of Math
3 years of Science*
3 years of Social Studies**
4 semesters of Wellness
Service Learning: 40 hours over four years
*Must pass Biology and Chemistry
**Must pass World History and US History sequence

Scheduling: Pembroke High School utilizes a seven day rotating schedule. There are seven periods for classes, with six periods meeting each day (one period rotates out each day). Students are enrolled in full year courses (4 credits), semester courses (2 credits). PHS students must enroll in at least the equivalent of six courses per semester.

Athletics: Pembroke High School offers eighteen sports including football, cross country, baseball, softball, field hockey, golf, volleyball, cheerleading, tennis, gymnastics, ice hockey, wrestling, soccer, track and field, indoor track, basketball, lacrosse and swimming.

Clubs: Pembroke High School offers numerous after school clubs and activities. Some of our extracurricular clubs/activities include the following:

Amnesty International, Art Club, Audio Engineering, Best Buddies, Chess Club, DECA, Jazz Band, Key Club, Latin Club, Math Club, Men's Choir, Mock Trial, National Honor Society, Robotics, SAGA, Ski Club, Student Council and Women's Choir

Pembroke High School Courses (2023-2024)

Pembroke High School offers the following levels of courses:

Advanced Placement - Honors - College Preparatory I - College Preparatory II

Independent Study courses are reserved for projects and programs not currently offered at Pembroke High School. Students who are highly motivated and capable of sustaining independent work may apply for an independent study.

English

Full Year - 4 Credits

English 9 – Genre Studies and Composition CP/H
English 10 – Word Literature CP/H
English 11 - American Literature CP/H
AP English Language and Composition
AP English Literature and Composition

Semester - 2 Credits

Literacy Enrichment for High School Success
English 12 - Senior Seminars - CP/H

- Graphic Novels
- Humanities & Philosophy
- Science Fiction & Dystopian Lit
- Sports Lit, Media & Writing
- Survival & Adventure Lit
- Suspense, Mystery & Horror Lit

21st Century Leadership - CP
Creative Writing - CP
Intro to Journalism - CP
Editorial Journalism - CP
Speech and Debate – CP

Math

Full Year - 4 Credits

Advanced Quantitative Reasoning CP
Algebra I CP
Algebra II CP/H
AP Calculus AB
AP Calculus BC
AP Computer Science A
AP Computer Science Principles
AP Statistics
Applied Integrated Math I, II, III - CP II
Calculus CP
Geometry CP/H
Introduction to Engineering CP/H
Pre-Calculus CP/H

Semester - 2 Credits

Advanced Computer Robotics – CP
Cyber Security – CP
Exploring Computer Science Programming - CP
Exploring Computer Science Robotics – CP

Science

Full Year - 4 Credits

Fundamentals of Science - CP
Anatomy and Physiology - H
AP Biology
AP Chemistry
AP Physics C
Biology
Chemistry – CP/H
Physics – CP/H
Physical Science – CP/H
Principles of Biomedical Science CP/H

Science Cont.

Semester - 2 Credits

Environmental Engineering - CP
Forensic Science - CP
Marine Biology - CP
Science Enrichment for High School Success – CP
Zoology - CP

Social Studies

Full Year - 4 Credits

AP European History
AP Government and Politics
AP Psychology
AP US History
Fundamentals of Social Studies - CP
Model United Nations I & II - H
Principles of Economics CP/H
Honors Economics – CP/H
US Government – CP
US History I – CP/H
US History II – CP/H
World History II – CP/H

Semester - 2 Credits

Genocide in History - CP
History of Modern Music – CP
Psychology - CP
Sociology - CP
Street Law - CP

World Language

Full Year - 4 Credits

AP French
AP Latin
AP Spanish
Arabic I, II CP/H
French I – CP
French II, III – CP/H
French III – CP/H
French IV - H
Latin I - CP
Latin II, III – CP/H
Latin III, IV, V – CP/H
Latin IV/V (A or B) – CP
Latin IV - H
Spanish I - CP
Spanish II, III, IV – CP/H

Semester – 2 Credits

Latin for Law & Government - CP
Latin for Medical Terminology – CP

Business

Full Year - 4 Credits

Strategic Marketing & Entrepreneurship - H

Semester - 2 Credits

Exploring Business - CP
Financial Literacy - CP
Intro to Accounting - CP
Intro to Marketing - CP
Microsoft Certification for Business Applications - CP

Music

Full Year - 4 Credits

Chamber Singers - H
Concert Band - CP
Concert Choir - CP
Concert Orchestra - CP
Music Major - H
Ninth Grade Band – CP
Ninth Grade Treble Choir – CP
Wind Ensemble – H

Semester - 2 Credits

Guitar Lab I & II - CP
Music Theory - CP
Piano Lab I & II – CP/H

Art

Full Year - 4 Credits

AP Studio Art
Art Major – CP
Intro to 3D Animation - CP
Portfolio Preparation - CP
Pre-AP Studio Art – H
Studio Art II - CP

Semester - 2 Credits

3D Design - CP
3D Printing Product and Design - CP
Ceramics I, II – CP
Computer Based Advertising Design - CP
Digital Art I, II, III – CP
Digital Photography – CP
Intro to 3D Animation - CP
Multi-Media Design - CP
Painting - CP
Printmaking – CP
Studio Art I - CP/H

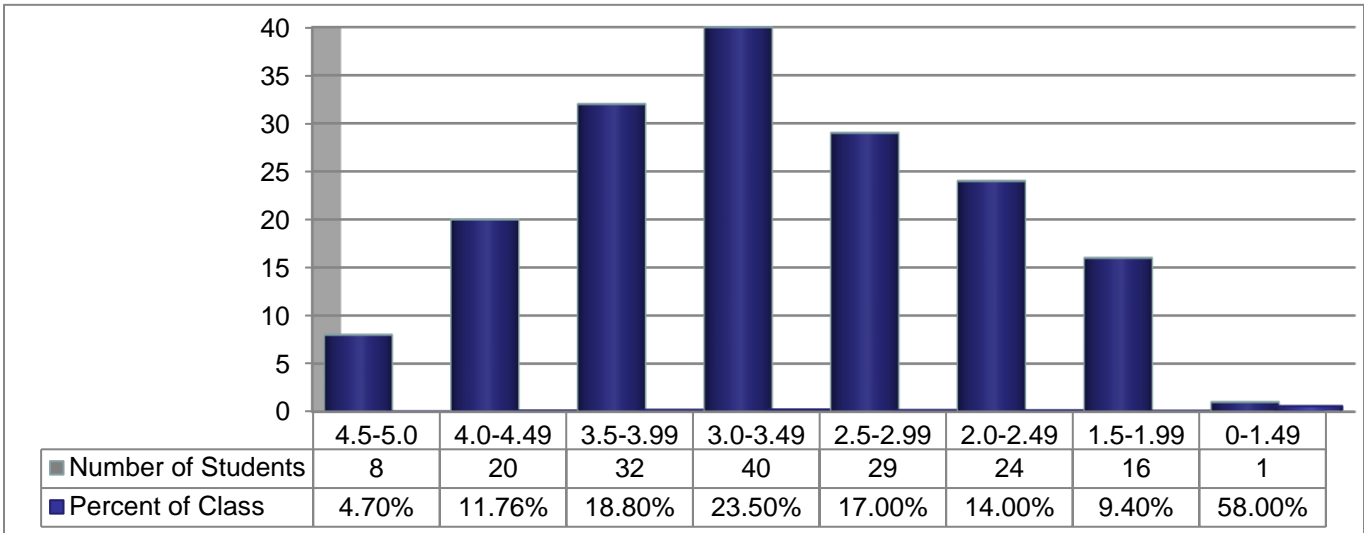
PE/Wellness

Semester - 2 Credits

Alternative Fitness - CP
Health & Wellness 9 - CP
Lifetime Recreational Sports - CP
Personal Fitness - CP

Pembroke High School does not officially report class rank. The histogram below is included to provide comparative information about achievement.

Highest GPA in the Class of 2023 4.7895 170 students are included in the distribution



Weighted GPA Range

Standardized Test Means

Class of 2023:

SAT:
 Evidence Based Reading & Writing (ERW): 582
 Math: 580
 ACT Composite – 25.6

Class of 2022

Post-Secondary Plans:

4 - Year College – 85.1%
 2 - Year College – 4.8%
 Total College
 Matriculation – 89.9%
 Employment – 6.3%
 Military – .5%
 Prof./Trade School – 2.1%
 Post Graduate – .5%

Grade Point Average

Pembroke High School GPA is calculated on a weighted/5.0 scale. The grade point average is calculated by converting grades to their corresponding numerical equivalent according to the chart below:

GRADE	AP	HONORS	CP I	CP II
A+	5.3	4.8	4.3	4.05
A	5.0	4.5	4.0	3.75
A-	4.7	4.2	3.7	3.45
B+	4.3	3.8	3.3	3.05
B	4.0	3.5	3.0	2.75
B-	3.7	3.2	2.7	2.45
C+	3.3	2.8	2.3	2.05
C	3.0	2.5	2.0	1.75
C-	2.7	2.2	1.7	1.45
D+	2.3	1.8	1.3	1.05
D	2.0	1.5	1.0	.75
D-	1.7	1.2	0.7	.45
F	0.0	0.0	0.0	0.0

**The following Post Secondary Institutions have accepted Class of 2023
graduates of Pembroke High School**

American International College	Keene State College
American University	Lafayette College
Anna Maria College	Lasell University
Arizona State University-Tempe	Le Moyne College
Assumption University	Lesley University
Auburn University	Louisiana State University
Bay Path University	Loyola University Chicago
Bentley University	Loyola University Maryland
Boston College	Lynn University
Brandeis University	Macalester College
Bridgewater State University	Maine College of Art & Design
Bryant University	Maine Maritime Academy
Bryn Mawr College	Marymount Manhattan College
Bucknell University	Massachusetts College of Art and Design
Central Connecticut State University	Massachusetts College of Pharmacy and Health Sciences
Champlain College	Massachusetts Maritime Academy
Chapman University	Merrimack College
Clark University	Miami University
Clarkson University	Michigan State University
Clemson University	Mississippi State University
Coastal Carolina University	Missouri University of Science and Technology
Colby-Sawyer College	Muhlenberg College
College of Charleston	Murray State University
College of the Holy Cross	New England Institute of Technology
Connecticut College	New Jersey Institute of Technology
Curry College	Niagara University
Dartmouth College	North Carolina State University at Raleigh
Davidson College	Northeastern University
Dean College	Norwich University
DePaul University	Pace University, New York City Campus
Drexel University	Palm Beach Atlantic University
East Carolina University	Pennsylvania State University
Elmira College	Pennsylvania State University
Elon University	Plymouth State University
Embry-Riddle Aeronautical University	Point Loma Nazarene University
Emerson College	Providence College
Emmanuel College	Purdue University
Endicott College	Quincy College
Fairfield University	Quinnipiac University
Fitchburg State University	Regis College
Florida Atlantic University	Rensselaer Polytechnic Institute
Florida Gulf Coast University	Rhode Island College
Florida Institute of Technology	Rivier University
Fordham University	Rochester Institute of Technology
Framingham State University	Roger Williams University
Franklin Pierce University	Sacred Heart University
Frostburg State University	Saint Anselm College
Gettysburg College	Saint Joseph's College of Maine
High Point University	Saint Joseph's University
Hobart William Smith Colleges	Saint Louis University-Madrid Campus
Hood College	Saint Michael's College
James Madison University	Salem State University
Johnson & Wales University	Salisbury University
Keene State College	Salve Regina University

**The following Post Secondary Institutions have accepted Class of 2023
graduates of Pembroke High School**

San Diego State University	University of Missouri-St Louis
San Francisco State University	University of New England
Sarah Lawrence College	University of New Hampshire
Savannah College of Art & Design	University of New Haven
Seattle University	University of North Carolina at Charlotte
Seton Hall University	University of North Carolina Wilmington
Siena College	University of Pittsburgh
Simmons University	University of Rhode Island
Skidmore College	University of San Diego
Southern Connecticut State University	University of San Francisco
Southern New Hampshire University	University of Scranton
Spa Tech Institute	University of South Carolina
Stevens Institute of Technology	University of Southern Maine
Stonehill College	University of Utah
Stony Brook University	University of Vermont
Suffolk University	Vermont State University
SUNY College of Environmental Science and Forestry	Virginia Tech
Syracuse University	Wentworth Institute of Technology
Temple University	West Virginia University
The American University of Paris	Western New England University
The George Washington University	Westfield State University
The University of Alabama	Wheaton College - Massachusetts
The University of Tampa	William & Mary
The University of Tennessee	Worcester Polytechnic Institute
Trinity College	Worcester State University
Union College	
University at Albany	
University at Buffalo	
University of Aberdeen	
University of Arizona	
University of California-San Diego	
University of California-Santa Cruz	
University of Colorado Boulder	
University of Connecticut	
University of Delaware	
University of Edinburgh	
University of Florida	
University of Hartford	
University of Illinois Chicago	
University of Kentucky	
University of Maine	
University of Maine at Farmington	
University of Maryland-College Park	
University of Massachusetts-Amherst	
University of Massachusetts-Amherst	
University of Massachusetts-Boston	
University of Massachusetts-Dartmouth	
University of Massachusetts-Lowell	
University of Memphis	
University of Miami	
University of Mississippi	
University of Missouri-Kansas City	