

ENROLLMENT GRAPHS & TABLES

1/19/24

ST. LOUIS PARK

283

Method

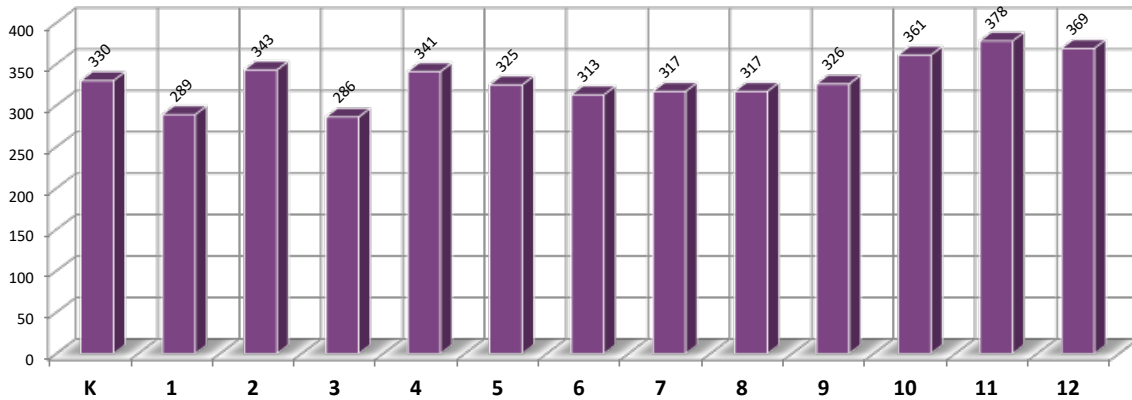
The selected History for Tables & Graphs was: **FALL ENROLLMENT DATA**

with **MERGED**

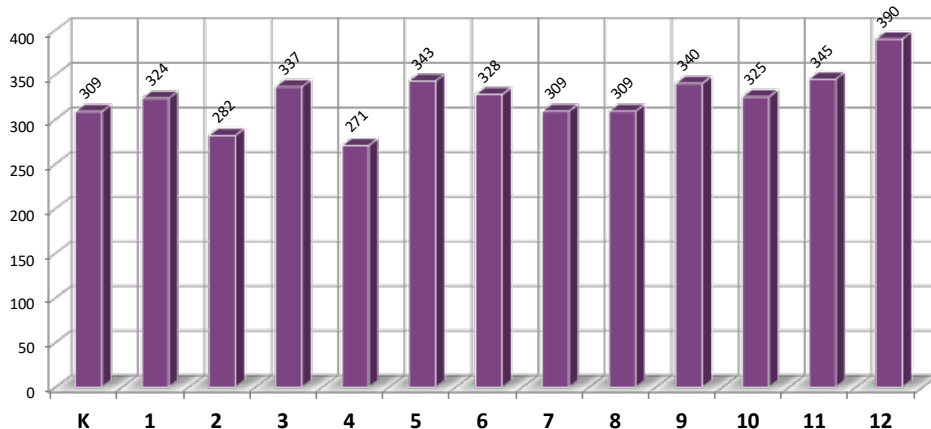
(8)

	Enrollment History - FALL ENROLLMENT DATA						Enrollment Projections - FALL ENROLLMENT DATA					
	2017-18	2018-19	2019-20	2020-21	2021-22	2022-23	2023-24	2024-25	2025-26	2026-27	2027-28	2028-29
EC	96.0	115.0	136.0	99.0	107.0	128.0	128.0	119.8	117.0	114.1	111.3	108.5
VPK	0.0	0.0	0.0	0.0	0.0	0.0	0.0	0.0	0.0	0.0	0.0	0.0
K	362.0	332.0	391.0	302.0	351.0	298.0	330.0	308.9	301.6	294.3	287.0	279.7
1	345.0	351.0	329.0	384.0	309.0	345.0	289.0	323.7	302.9	295.7	288.5	281.2
2	346.0	333.0	338.0	319.0	365.0	294.0	343.0	282.1	316.2	295.6	288.4	281.2
3	360.0	355.0	334.0	325.0	319.0	364.0	286.0	336.6	276.0	309.9	289.5	282.3
4	355.0	357.0	346.0	322.0	315.0	316.0	341.0	270.9	320.8	261.3	294.6	274.5
5	363.0	359.0	347.0	345.0	312.0	303.0	325.0	343.0	272.3	322.4	262.7	296.1
6	334.0	356.0	358.0	323.0	330.0	320.0	313.0	327.9	344.8	273.7	324.1	264.1
7	344.0	323.0	357.0	340.0	331.0	322.0	317.0	309.2	323.7	340.6	269.8	319.9
8	349.0	340.0	333.0	338.0	331.0	316.0	317.0	309.2	301.0	315.5	332.2	261.9
9	403.0	392.0	370.0	374.0	399.0	361.0	326.0	340.4	333.6	325.3	340.1	357.2
10	350.0	390.0	380.0	366.0	383.0	393.0	361.0	325.4	339.8	333.0	324.7	339.5
11	361.0	337.0	378.0	356.0	352.0	364.0	378.0	345.2	309.9	324.1	317.4	309.2
12	372.0	374.0	339.0	388.0	377.0	385.0	369.0	390.0	356.9	321.2	335.6	328.8
K-12	4,644.0	4,599.0	4,600.0	4,482.0	4,474.0	4,381.0	4,295.0	4,212.4	4,099.6	4,012.6	3,954.4	3,875.8
Pre K-12	4,740.0	4,714.0	4,736.0	4,581.0	4,581.0	4,509.0	4,423.0	4,332.2	4,216.6	4,126.7	4,065.8	3,984.3
% Change K-12		-0.97%	0.02%	-2.57%	-0.18%	-2.08%	-1.96%	-1.92%	-2.68%	-2.12%	-1.45%	-1.99%

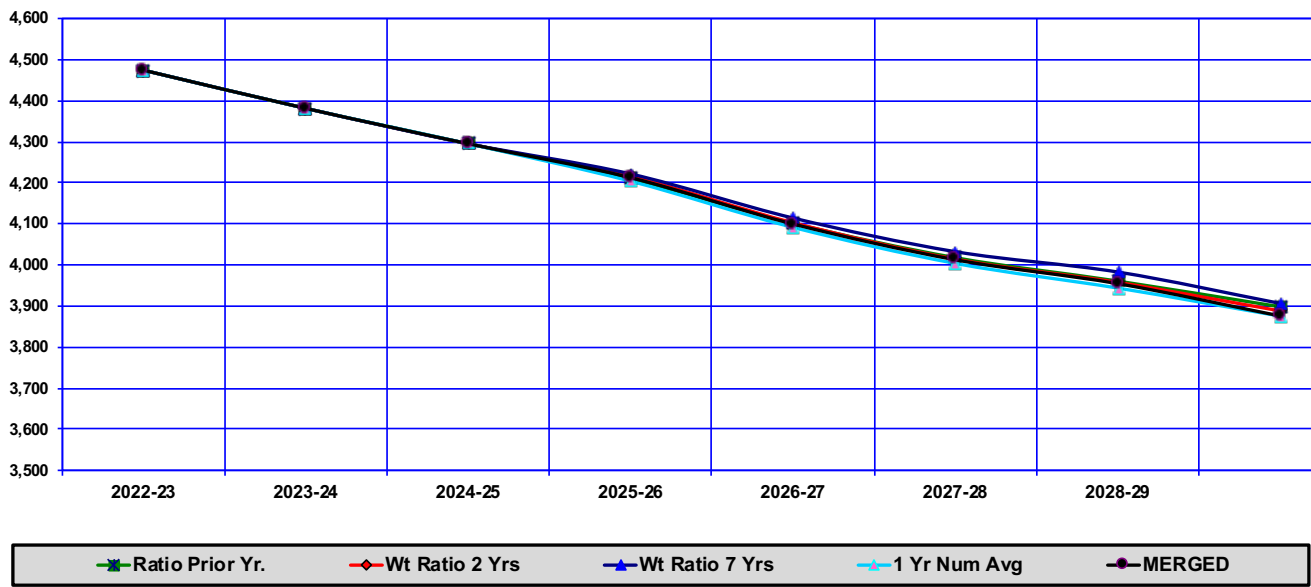
Enrollment by Grade for Current Year 2023-24



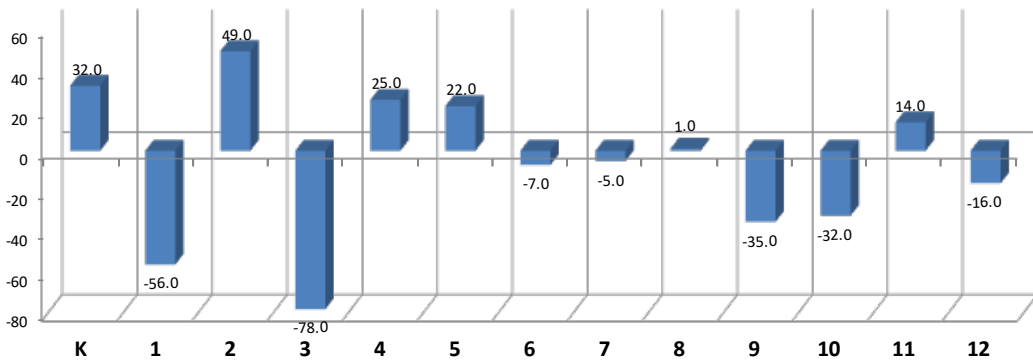
Enrollment by Grade for 1st Projection Year 2024-25



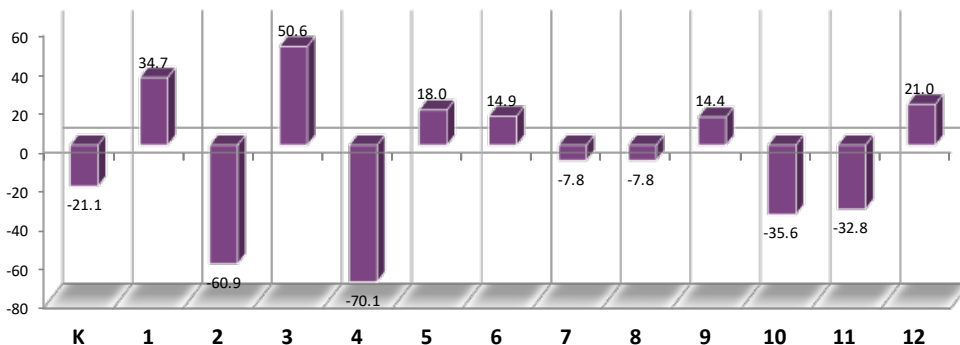
Enrollment Graph of Projections Selected on the DATA Worksheet.



Enrollment Change by Grade for the Current Year 2023-24



Enrollment Change by Grade for the 1st Projection Year 2024-25



Projecting Enrollment from Prior Enrollments is a Computational Process

To understand the components programmed into this system the user must understand Cohort Survival, Weighted Cohort Survival, and the Numerical Survival or Change Methodology

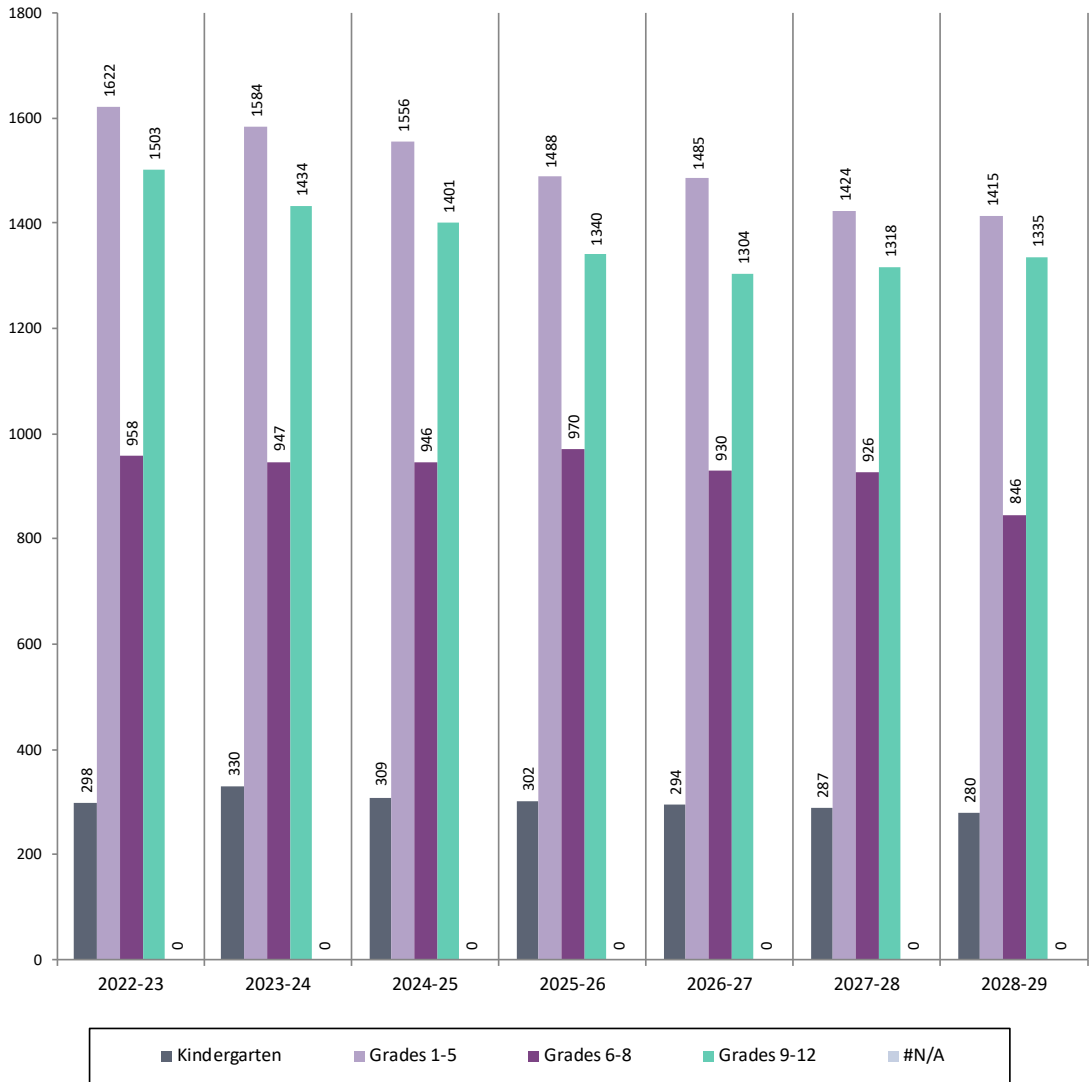
The Projection used in this result is for ST. LOUIS PARK 283
The methodology used for this report is MERGED

The projection for K-12 anticipates an enrollment change of -82.6 From 2023-24 to 2024-25 (1) yr.
The projection for K-12 anticipates an enrollment change of -419.2 From 2023-24 to 2028-29 (5) yrs.
Enrollment Projections by District Grade Groupings present these changes by grouping.

Grade Groupings

1	Kindergarten
	Grades K-1
	Grades K-2
	Grades K-3
	Grades 1-2
	Grades 1-3
	Grades 1-4
2	Grades 1-5
	Grades 1-6
	Grades 1-7
	Grades 1-8
	Grades 2-3
	Grades 2-4
	Grades 2-5
	Grades 2-6
	Grades 3-4
	Grades 1-3
	Grades 3-6
	Grades 3-7
	Grades 4-5
	Grades 4-6
	Grades 4-7
	Grades 4-8
	Grades 5-6
	Grades 5-7
	Grades 5-8
	Grades 6-7
3	Grades 6-8
	Grades 6-9
	Grades 7-8
	Grades 7-9
	Grades 7-12
	Grades 8-9
	Grades 8-10
	Grades 8-12
	Grades 9-10
4	Grades 9-12
	Grades 10-12
	Grades 11-12
	Grade 12

Current and Projected Enrollment by Grade Groupings



	Grade Group	Prior Yr.	Current Yr.	Projection Years				
		2022-23	2023-24	2024-25	2025-26	2026-27	2027-28	2028-29
1	Kindergarten	298.0	330.0	308.9	301.6	294.3	287.0	279.7
2	Grades 1-5	1,622.0	1,584.0	1,556.3	1,488.3	1,484.9	1,423.6	1,415.4
3	Grades 6-8	958.0	947.0	946.3	969.6	929.8	926.0	845.9
4	Grades 9-12	1,503.0	1,434.0	1,400.9	1,340.1	1,303.6	1,317.8	1,334.7
5	#N/A	0.0	0.0	0.0	0.0	0.0	0.0	0.0
	Total K-12	4,381.0	4,295.0	4,212.4	4,099.6	4,012.6	3,954.4	3,875.8

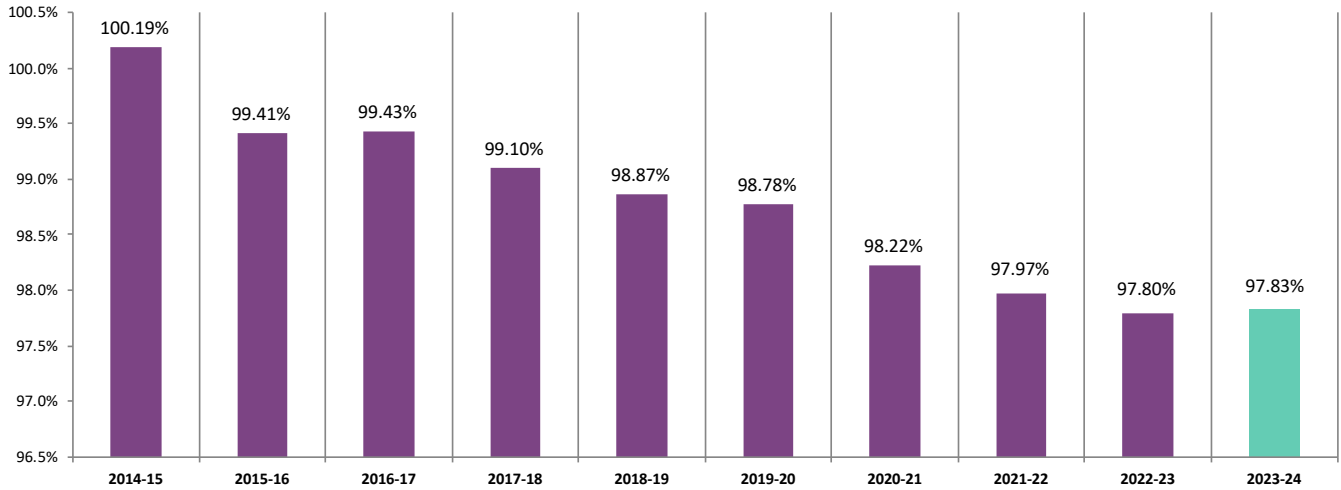
ST. LOUIS PARK

283

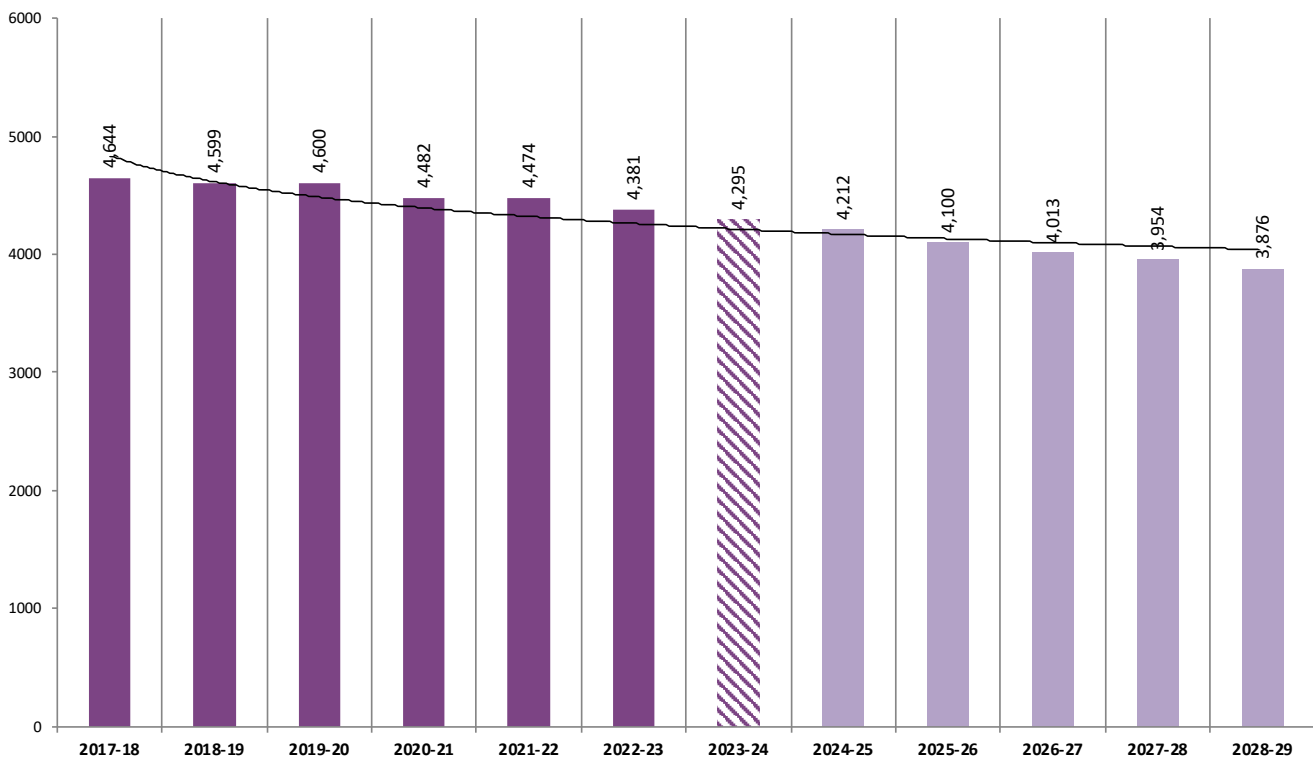
Data is taken from ENHIST DATA to Compute Change in Enrollment During the Year and Percent

	2014-15	2015-16	2016-17	2017-18	2018-19	2019-20	2020-21	2021-22	2022-23	2023-24
Fall Data K-12	4,605	4,627	4,627	4,644	4,599	4,600	4,482	4,474	4,381	4,295
EOY ADM K-12	4,613.78	4,599.70	4,600.43	4,602.21	4,546.89	4,543.84	4,402.28	4,382.97	4,284.40	4,201.73
% Fall to End-of-Yr	100.19%	99.41%	99.43%	99.10%	98.87%	98.78%	98.22%	97.97%	97.80%	97.83%

Percent of End-of-Year Adjusted ADM to Fall Enrollment



K-12 ENROLLMENT HISTORY & PROJECTED TOTAL ENROLLMENT



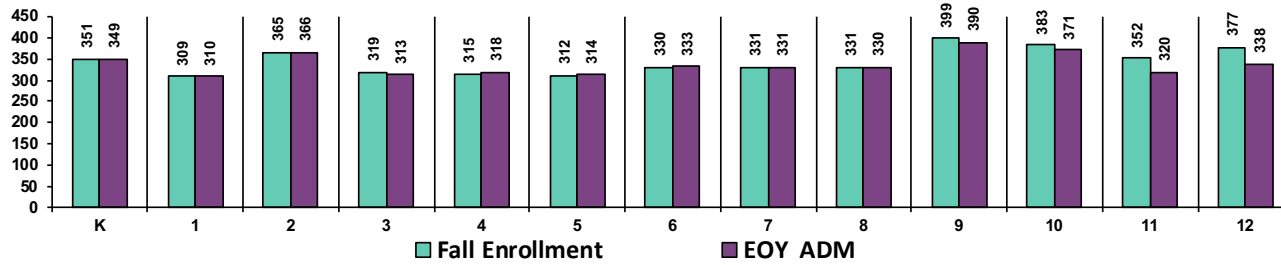
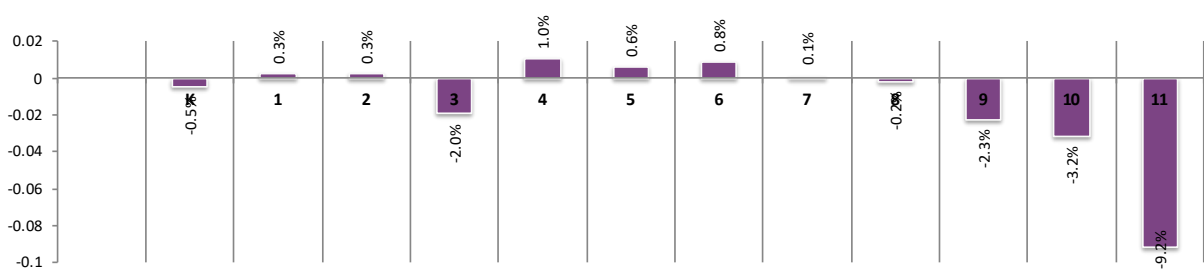
Enrollment History Graphs

These graphs are drawn from ENHIST and would not include Enrollment Adjustments

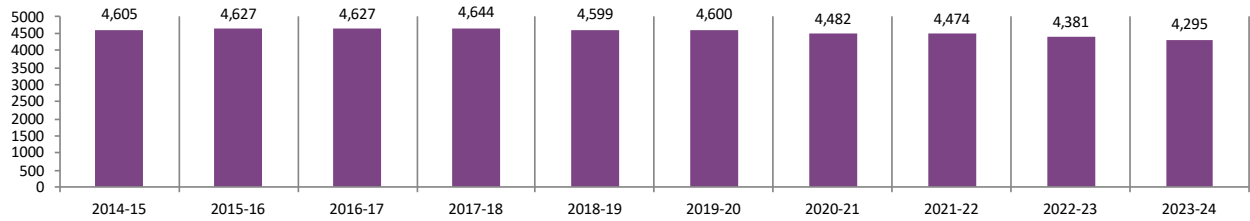
ST. LOUIS PARK

283

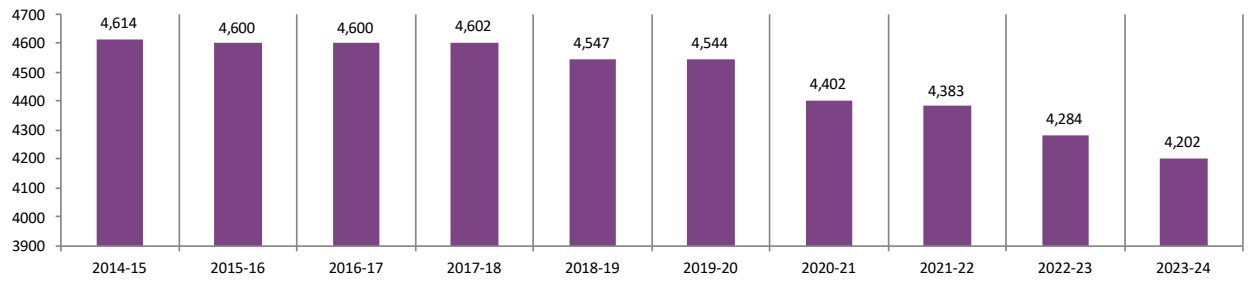
2021-22 % Change in Fall Enrollment /Est. EOY Adjusted ADM by Grade



Total K-12 Fall Seat Count from the Gender Ethnicity by Grade by District File of the MDE



Total K-12 Adjusted Average Daily Membership K-12 by Year



Fall Seat Count and EOY ADM for 2014-15 through 2023-24

