





# Emmett Transportation Dept.

Review for the month of  
November 2023







# State Required Emergency Evacuations

- Each year the State requires our drivers to complete two emergency evacuation drills on the buses.
  - They each carry out a front and rear door evacuation, one in the fall and one in the spring.
  - Drivers pick students and assign them a task in the event of an emergency. They might be assigned to grab the fire extinguisher, 1<sup>st</sup> aid kit, or emergency triangles. They also pick a couple of students to learn how to operate the radio to call in for help and how to set the parking brake.
  - All of our buses have completed the fall evacuations by the end of November.
- 
- 
- 
- 



# Bus Safety Training

- Each year we provide School Bus Safety Training for all of our Kindergarten and 1<sup>st</sup> grade students.
  - Our lead trainer Pepper Yanzuk and her friend Tiggy visit the elementary schools along with several transportation staff to have the students help teach Tiggy the safe and correct way to ride a school bus.
  - They learn how to watch the bus driver to know when it is safe to cross the road.
  - How to sit the correct way and keep noise levels low so as not to distract the bus driver.
  - Each Student receives a safety coloring book and a treat.
  - We will begin training the beginning of December.
- 
- 
- 
- 

# Fuel Bid Process

## Step 1 Prepare Notice

- Review and update previous notice.
- Check past years fuel gallons used.

## Step 2 Advertising

- Call for Fuel Bids submitted to Idaho Press Tribune/ Messenger-Index and will run for 2 weeks.
- The Call for Fuel Bids notice and bid sheets are mailed out to each gas station in Emmett.

## Step 3 Opening /Accepting

- All sealed bids will be opened on the designated date at the District Office.
- At the next School Board Meeting, the bid will be awarded to the lowest bidder that met the bid requirements.

# PREVENT Stop Arm Violations

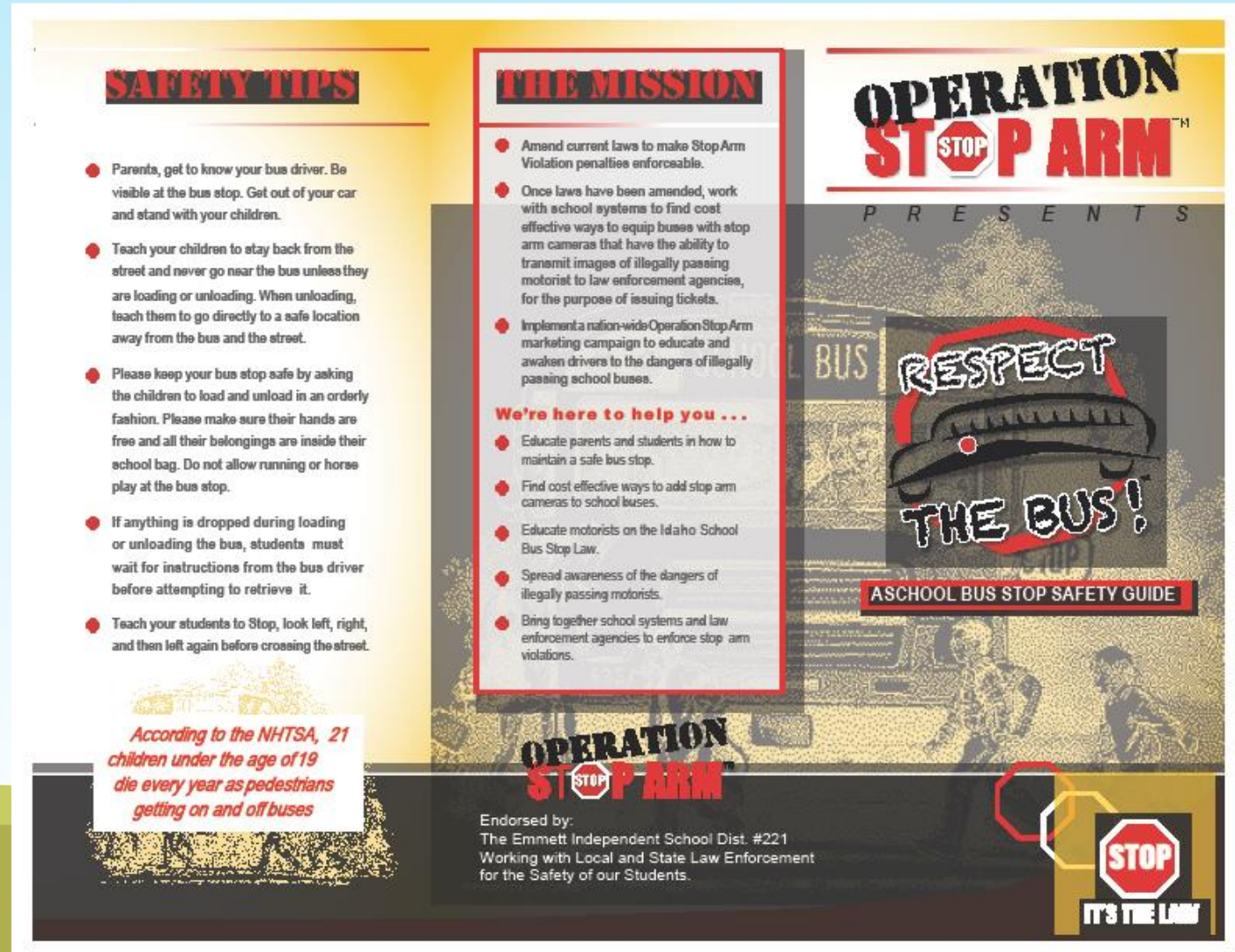
## Rules of the Road: What to do when you see a school bus with flashing overhead lights:

Almost daily our school buses continue to have vehicles in our county passing when they are stopped to pick up or drop off students.

We do have some buses with exterior cameras now and they help get license plate numbers that we turn into Gem County Sheriff's Department and the Emmett City Police.

If you see a bus with yellow lights flashing on top you need to be prepared to stop, the red lights and stop arm are ready to activate. They are no different than a traffic light, yellow flashing lights you should be slowing down and prepared to stop for the red lights.

**PLEASE HELP US TO KEEP OUR STUDENTS SAFE!**



The poster is titled "OPERATION STOP ARM" and "PRESENTS". It features a central graphic of a school bus with the word "RESPECT" written on its side and "THE BUS!" written below it. The poster is divided into several sections:

- SAFETY TIPS**
  - Parents, get to know your bus driver. Be visible at the bus stop. Get out of your car and stand with your children.
  - Teach your children to stay back from the street and never go near the bus unless they are loading or unloading. When unloading, teach them to go directly to a safe location away from the bus and the street.
  - Please keep your bus stop safe by asking the children to load and unload in an orderly fashion. Please make sure their hands are free and all their belongings are inside their school bag. Do not allow running or horse play at the bus stop.
  - If anything is dropped during loading or unloading the bus, students must wait for instructions from the bus driver before attempting to retrieve it.
  - Teach your students to Stop, look left, right, and then left again before crossing the street.
- THE MISSION**
  - Amend current laws to make Stop Arm Violation penalties enforceable.
  - Once laws have been amended, work with school systems to find cost effective ways to equip buses with stop arm cameras that have the ability to transmit images of illegally passing motorists to law enforcement agencies, for the purpose of issuing tickets.
  - Implement a nation-wide Operation Stop Arm marketing campaign to educate and awaken drivers to the dangers of illegally passing school buses.
- We're here to help you ...**
  - Educate parents and students in how to maintain a safe bus stop.
  - Find cost effective ways to add stop arm cameras to school buses.
  - Educate motorists on the Idaho School Bus Stop Law.
  - Spread awareness of the dangers of illegally passing motorists.
  - Bring together school systems and law enforcement agencies to enforce stop arm violations.

According to the NHTSA, 21 children under the age of 19 die every year as pedestrians getting on and off buses

Endorsed by:  
The Emmett Independent School Dist. #221  
Working with Local and State Law Enforcement for the Safety of our Students.

**STOP**  
IT'S THE LAW



## Stop Arm Violations

\* Each year we have over 100 Stop Arm Violations.

\* Know the laws.

\* Be aware of traffic.

\* Avoid a fine.

\* When in doubt STOP.

\* Save the life of a student.

### KNOW THE LAW OBEY THE LAW

On July 1st, 2019 a new law went into effect, that will have a dramatic impact on keeping our children safe when loading and unloading school buses.

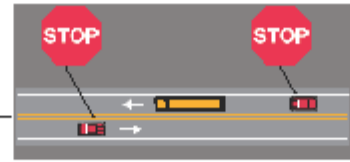
#### here's what the new law does:

- Allows stop arm cameras to be placed on the outside of school buses to capture images of motorist illegally passing.
- Ticket will be issued to the owner of the vehicle that illegally passed a school bus.
- Makes this a civil offense, resulting in a fine of \$200.00 for the first offense, \$400.00 for the second offense, and \$800.00 for the third offense, within a five year period.
- Allows the revenue from these tickets to be shared with school systems.
- Exempts the bus driver from the burden of reporting violations leaving them to focus on the children.

The new law allows law enforcement to issue tickets resulting in up to \$800 fine, up to 4 points on driving record, and a mandatory court appearance if caught illegally passing a stopped school bus.

*On average, each school bus is illegally passed once every day.*

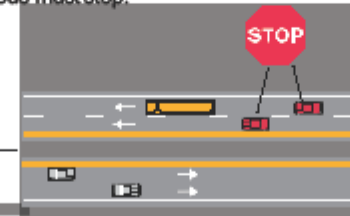
**Two-lane roadway:**  
When school bus stops for passengers, **ALL** traffic from both directions must stop.



**Two-lane roadway with a center turning lane or medi:**  
When school bus stops for passengers, **ALL** traffic from both directions must stop.



**Divided highway of four lanes or more with or without a median separation:** When school bus stops for passengers, only traffic following the bus must stop.



All traffic must stop for school buses on Gem County roads.

**OPERATION  
STOP ARM™**



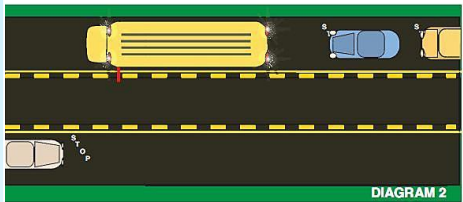
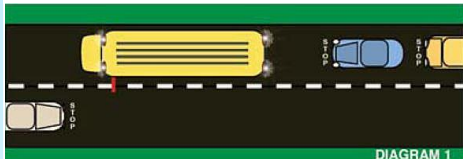
**STOP  
IT'S THE LAW**

# Stop Arm Violations

## Here's When You Do Have to Stop for a School Bus in Idaho

Here's a quick lesson on when you do and don't have to stop for a school bus.

**You Must Stop** when approaching a school bus that is displaying flashing red lights while stopped to pick up or drop off children. You must remain stopped until all children are clear of the roadway and the bus turns off the red lights and moves again.

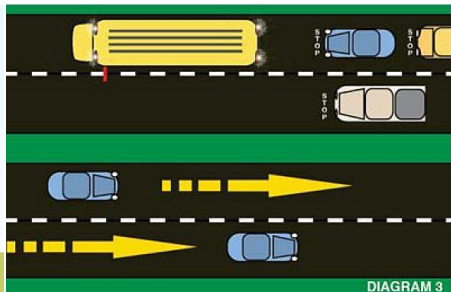


idt.idaho.gov

If you're on any road with two lanes of traffic, with each lane going in opposite directions, both following and oncoming traffic must stop for the bus. This would also apply to roads and highways that have a middle, turn lane between the two roads traveling in opposite directions. The above illustration is a screenshot taken from the [Idaho State Drivers Manual](#).

## And Don't Have to Stop for a School Bus in Idaho

Roads Outside of Gem County.



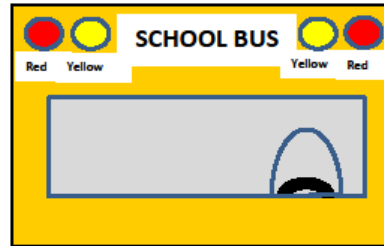
idt.idaho.gov

In Idaho, you do not have to stop if you are traveling in the opposite direction on roads with **four or more lanes**, if two lanes are going in each direction. The screenshot above from the [Idaho State Drivers Manual](#) above clearly illustrates this scenario.

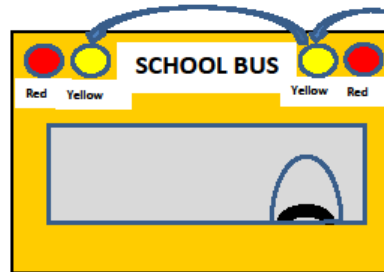
### In Gem County you **MUST** Stop on **ALL** Roads.

STOP for a school bus that is stopped as long as the red light near the top of the bus are flashing and/or the stop arm on the left side of the bus is extended. Remain stopped until all children have cleared the roadway, red lights are turned off and the bus moves again.

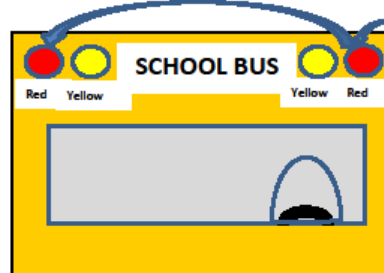
### School Bus Overhead Eight-Way Light System



2 Yellows and 2 Reds on the Front of the Bus  
2 Yellows and 2 Reds on the Rear of the Bus  
The EIGHT LIGHT SYSTEM is only used when picking up or dropping off children.



Yellow Lights are activated and flash alternating as a caution that the bus is going to stop. These are activated at least @ 200 feet most of the time before the bus is going to stop to load or unload children.



Red lights are activated when the bus stops, canceling the yellow alternating lights and starting the red alternating lights which also includes the stop arm and red strobe lights at the same time.

ALL TRAFFIC in roadways of 1 to 3 lanes **MUST STOP**. Bus drivers are not to cancel the Red lights until all children are sat down in the bus when loading or all children have crossed the roadway or exited a safe distance from the bus when unloading.

For roadways with 4 or more lanes, all traffic moving in the same direction of the bus **MUST STOP**. All oncoming traffic may proceed.

**ALL ROADS IN GEM COUNTY FALL UNDER ALL TRAFFIC MUST STOP 1 to 3 Lane RULE!**

PLEASE HELP US KEEP OUR CHILDREN SAFE!  
**Not Stopping is Putting A Child's Life At Risk!**

If you have any questions please call 208-365-3207.

Emmett School Dist #221

THANK YOU!

# Student Counts 2023-2024

- Secondary Eligible Riders: 836  
EHS-411 EMS-408 BCHS-17
- Elementary Eligible Riders: 797  
Shadow Butte-415 Carberry-208 Butte View-116  
Sweet-45 Ola-13
- Educational Shuttle Riders:  
Day 1 - 305 Day 2 - 234





# New Storage Shed

Our new storage shed arrived this month and we couldn't be happier! We will no longer have to rent a storage unit to store extra tires and parts.

