

# PRIMARY ANNEX BREAKFAST MENU

## MONDAY

## TUESDAY

## WEDNESDAY

## THURSDAY

## FRIDAY

5<sup>TH</sup> Breakfast Pizza,  
Fruit, Juice, Milk

6<sup>TH</sup> Pancake Wrap,  
Fruit, Juice, Milk

7<sup>TH</sup> Yogurt, Graham  
Crackers, Fruit, Juice,  
Milk

8<sup>TH</sup> Biscuit w/jelly, Fruit,  
Juice, Milk

2<sup>ND</sup> Pancakes w/syrup,  
Fruit, Juice, Milk

9<sup>TH</sup> Cheerios Cereal,  
Fruit, Juice, Milk

12<sup>TH</sup> Strawberry Cream  
Cheese Bagel, Fruit,  
Juice, Milk

13<sup>TH</sup> Muffin, Fruit,  
Juice, Milk

14<sup>TH</sup> Mini Waffles,  
Fruit, Juice, Milk

15<sup>TH</sup> Sausage Roll, Fruit,  
Juice, Milk

16<sup>TH</sup> NO SCHOOL, In-  
Service

19<sup>TH</sup> NO SCHOOL,  
President's Day

20<sup>TH</sup> Corn Flake Cereal,  
Fruit, Juice, Milk

21<sup>ST</sup> Banana Bread,  
Fruit, Juice, Milk

22<sup>ND</sup> Ham & Egg Bar,  
Toast, Fruit, Juice, Milk

23<sup>RD</sup> Mini Pancakes,  
Fruit, Juice, Milk

26<sup>TH</sup> Breakfast Pizza,  
Fruit, Juice, Milk

27<sup>TH</sup> Biscuit w/jelly,  
Fruit, Juice, Milk

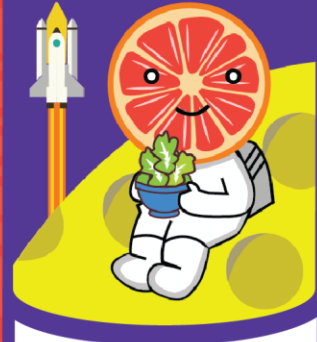
28<sup>TH</sup> Pancake Wrap,  
Fruit, Juice, Milk

29<sup>TH</sup> Cinnamon Chex  
Cereal, Fruit, Juice, Milk

# FEB

MENU 2024

## JOHNSON SPACE CENTER



### ANNOUNCEMENTS:

- Menu Subject to Change!
- Breakfast Free to All Students!
- Adults - \$3.10



Food and Nutrition Division  
National School Lunch Program



TEXAS DEPARTMENT OF AGRICULTURE  
**COMMISSIONER SID MILLER**

This product was funded by USDA.  
This institution is an equal opportunity provider.



Updated 2/1/2024  
www.SquareMeals.org