



# PROGRAM INFORMATION NIGHT

North Ridgeveille High School  
January 23, 2023





## WHAT IS COLLEGE CREDIT PLUS?



Ohio's dual enrollment credit program



Courses count for both high school and college credit



Tuition is FREE at public institutions



Books and Fees are covered for students attending public colleges or universities

# PARTICIPATION

## OPEN

to grades 7-12

## DEMONSTRATE

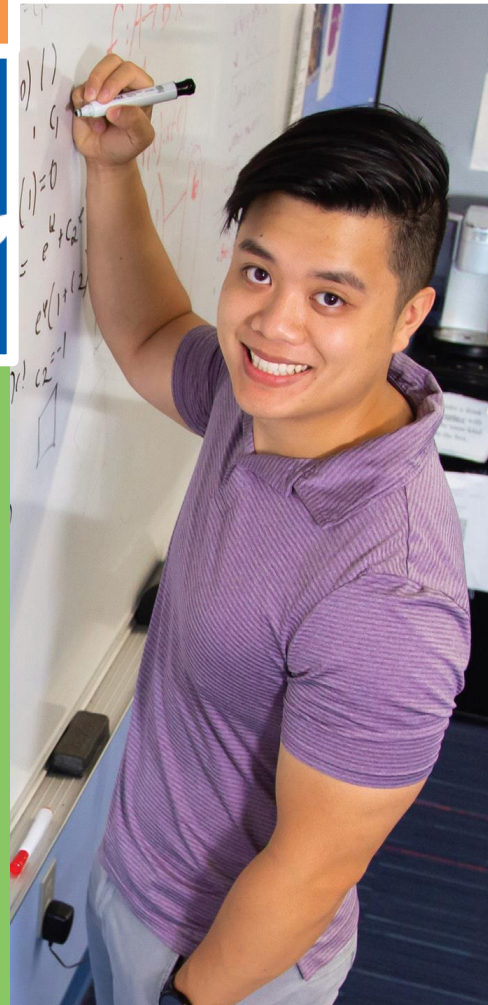
College Readiness (test scores/GPA)

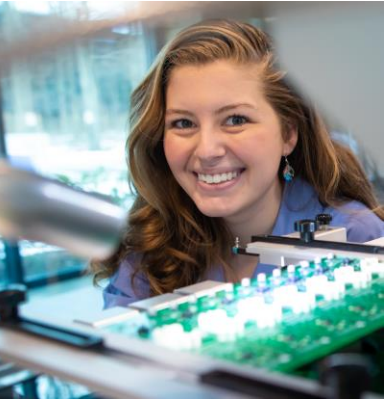
## ENROLL

In real college courses

## MEET

College requirements and academic standards





# GRADES, GPA & TRANSCRIPTS

Grades appear on college AND high school transcript.

Calculated into BOTH high school & college GPA

PERMANENT college record – must send to destination college/university if transferring

CCP Grades weighted same as AP/IB course in same subject area

# ENROLLING IN CLASSES

- Summer, Fall and Spring Semesters
- Online, on campus, learning centers, or at your high school\*

*\* This option is available if the school has partnered with a college/university to offer courses at the high school.*



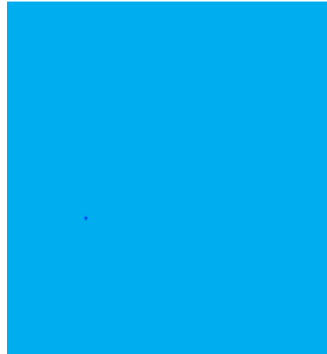
## PLAN CAREFULLY!

### Be Sure to Consider:

- 30 Credit Hour Limit per year- See your guidance counselor!
- Transportation is not provided
- Be realistic about time commitment
- Technology/Internet Access
- Athletic/Extra Curricular Eligibility – Minimum Credits







# ADVANTAGES OF CCP

Local families have saved  
**\$99 million**  
in tuition/textbook costs  
through CCP at LCCC since 2013



**Save time!**

Courses can count for high school graduation & college degree at the same time.

**Explore!** Take courses in your major.

**Build Confidence!** Experience the college environment.

**You're not alone!** You'll have access to both high school and LCCC support services.

**Flexibility!** You decide when to begin, how many or how few courses to take.

# ADVANTAGES OF CCP



## TRANSFERRING CREDITS

### Transfer 36

Visit [transfercredit.ohio.gov](http://transfercredit.ohio.gov) for information about guaranteed transfer of applicable credits among Ohio's public colleges and universities

### Check with Destination College/University

To confirm transferability & applicability to program.

### Helpful Websites

- [www.transferology.com](http://www.transferology.com)
- [www.lorainccc.edu/transfer](http://www.lorainccc.edu/transfer)
- [transfercredit.ohio.gov](http://transfercredit.ohio.gov)





## CCP: THINGS TO CONSIDER



# ACADEMIC UNDERPERFORMANCE:

## Understand the Risks



School districts can charge families to recover tuition for courses that are not successfully completed.



Grades are recorded on high school and college transcripts – permanent record.



Future Financial Aid could be impacted.



Academic Probation and Dismissal



High School Graduation Delayed



# COLLEGE READINESS – MORE THAN A TEST SCORE!

Is the STUDENT

- ☒ Prepared to self-advocate?
- ☒ Independent?
- ☒ Organized?
- ☒ Ready to ask for help?



Is this  
**THEIR** goal?



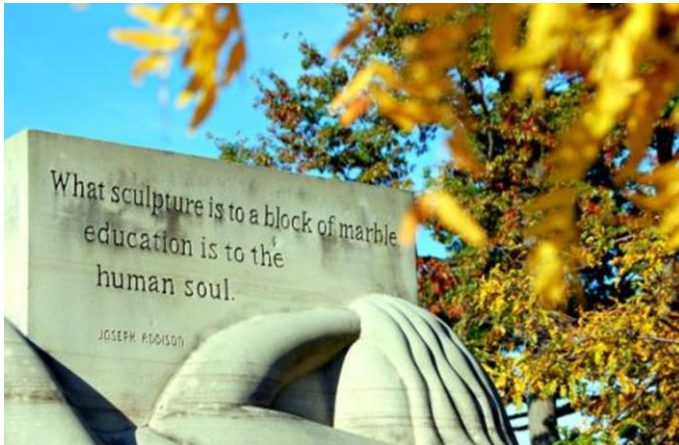
CCP: THINGS TO  
CONSIDER



CCP:  
Things  
to  
Consider



CollegeCredit  
PLUS



## CCP Coursework

# Maturity & Content

**Courses are designed for adult learners.**

Course content is not modified for CCP students.

**Grading Criteria & Academic Rigor.**

Are not adjusted for CCP students.

**College Environment.**

CCP students will attend classes with adult learners on a college campus.

**College Expectations.**

College faculty and staff will treat CCP students SAME as other college students.

# K-12 VS COLLEGE

They are Different!

## FEWER OPPORTUNITIES TO EARN POINTS

Tests, quizzes, assignments are often less frequent and cover more material.

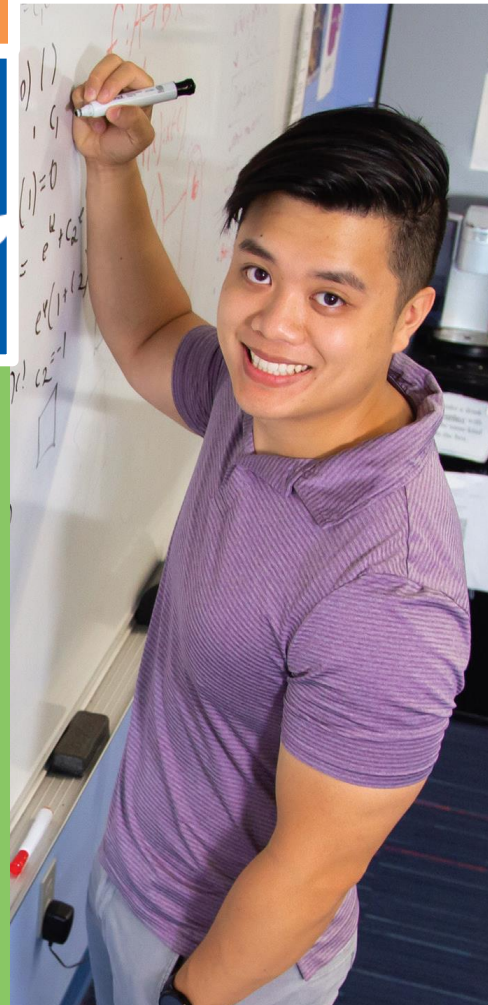
## STUDY SKILLS!

Students can expect to spend more time outside of class preparing, reading, studying. Study skills are important due to pace, amount of material covered.

## PARENT ROLE

Colleges treat students as primary decision-maker. Parents assume supporting role. FERPA and other policies may limit access to information.

**Students are in the driver's seat! Are you ready?**





1

## Apply

CCP application is FREE

[www.lorainccc.edu/ccp](http://www.lorainccc.edu/ccp)



Click Link to “CCP Application”

DEADLINE

*June*

*1*



## Applications must be COMPLETE!



Signatures



Permission Slip



Social Security Number

(Required for state reporting)





## 2

## Eligibility

**Ask Your Counselor to Submit High School Transcript** (send to [ahorning@lorainccc.edu](mailto:ahorning@lorainccc.edu))

- 3.0 Unweighted Cumulative High School GPA
- Or meet statewide remediation free test scores. Visit [www.lorainccc.edu/testingcenter](http://www.lorainccc.edu/testingcenter) for testing information

	ENGLISH	READING	MATH
<b>ACCUPLACER</b> (Next Generation)	<b>263</b>	<b>250</b>	<b>ALEKS Math*</b>
<b>ACT</b>	<b>18</b>	<b>22</b>	<b>22</b>
<b>SAT*</b>	<b>480 (EBRW)</b>	<b>480 (EBRW)</b>	<b>530</b>

*\* see your academic advisor for course placement*





3

## Admission

Watch your mailbox for your LCCC Welcome Letter!

### Follow Instructions



Creating Student Accounts



Complete an Orientation



Save your Student Number

### State-Required Maturity Questionnaire

Check the email you used on your application to complete this mandatory state-required CCP Admission step.



# Scheduling Classes

## High School Site Classes

Your guidance counselor will work with your CCP advisor to register students taking a CCP class at a high school. Books will be provided by your school.

High school site classes will follow your school district calendar.

## Online Classes or Classes at an LCCC Campus

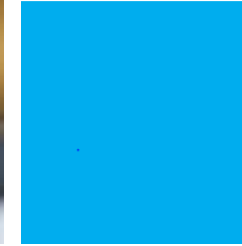
You will need to meet with your high school guidance counselor to request a course authorization form.

You will need to contact an LCCC Advisor to register for your course. Your advisor will provide instructions for ordering textbooks.

LCCC online/on-campus classes will follow the LCCC Academic calendar ([www.lorainccc.edu/calendar](http://www.lorainccc.edu/calendar))

CollegeCredit  
PLUS





**CollegeCredit**  
PLUS

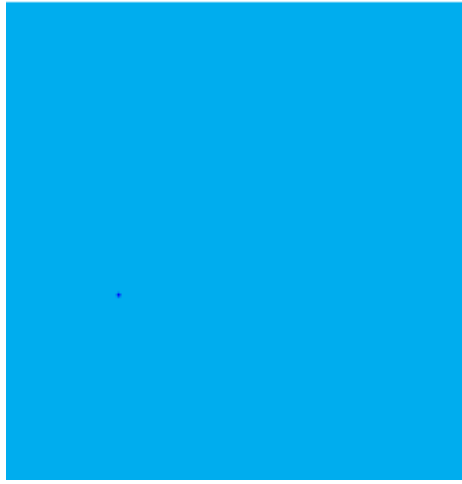
# WHAT CLASSES CAN I TAKE?

Academic Advisors will help students choose classes based on placement scores & academic goals.

**CCP LEVEL I COURSES** - [www.lorainccc.edu/ccp](http://www.lorainccc.edu/ccp).

**CURRICULUM GUIDES & PROGRAMS** - [www.lorainccc.edu/programs](http://www.lorainccc.edu/programs)

**CLASS SCHEDULE** - [www.lorainccc.edu](http://www.lorainccc.edu) and click "Academics" menu.



[www.lorainccc.edu/ccp](http://www.lorainccc.edu/ccp)

