



SAN MATEO-
FOSTER CITY
SCHOOL DISTRICT



NCSM SCHOOL DESIGN:

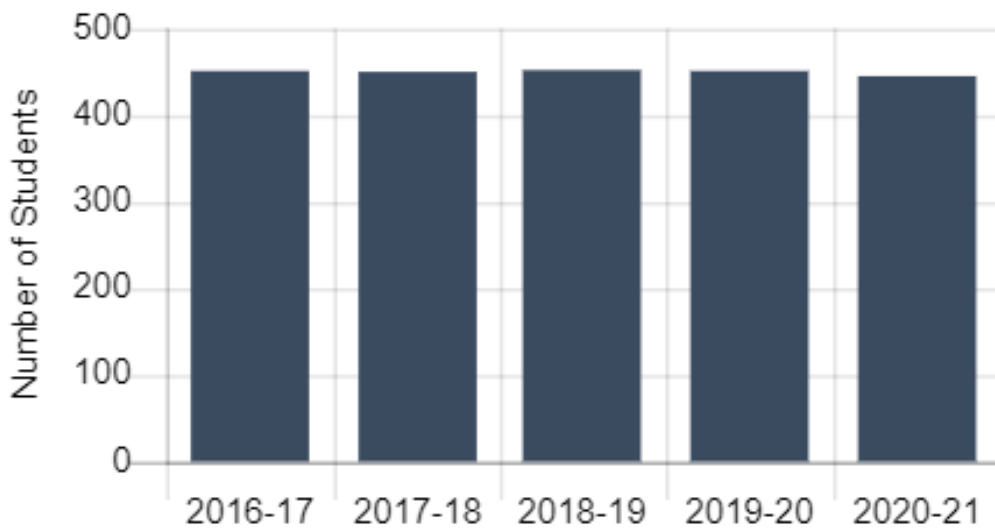


IMPLICATIONS FOR COLLEGE PARK & FIESTA GARDENS



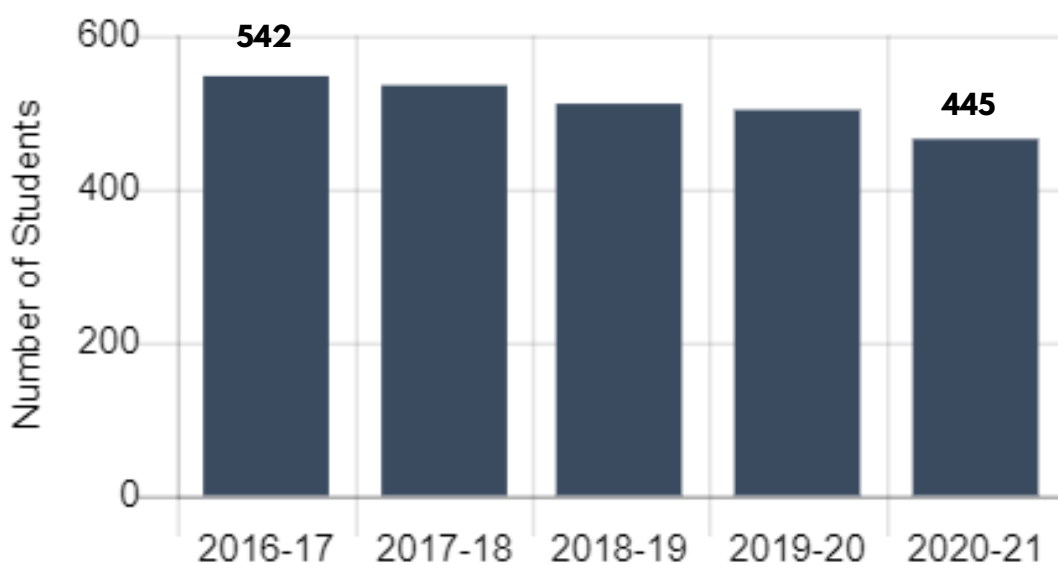
WHAT DOES OUR DATA AND ENROLLMENT TELL US?

College Park Elementary



434

Fiesta Gardens International Elementary

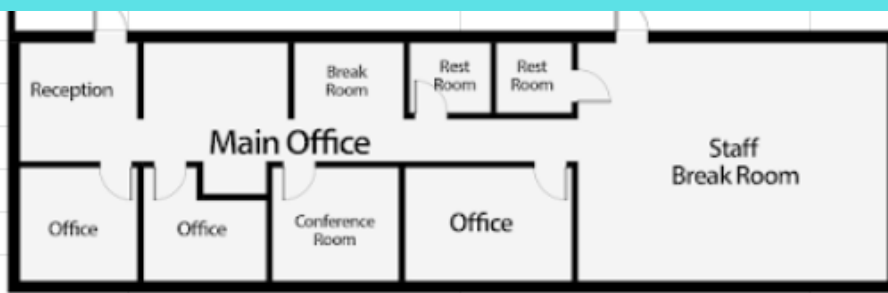


426

ARE SCHOOL FACILITIES ABLE TO MAINTAIN CURRENT ENROLLMENT?



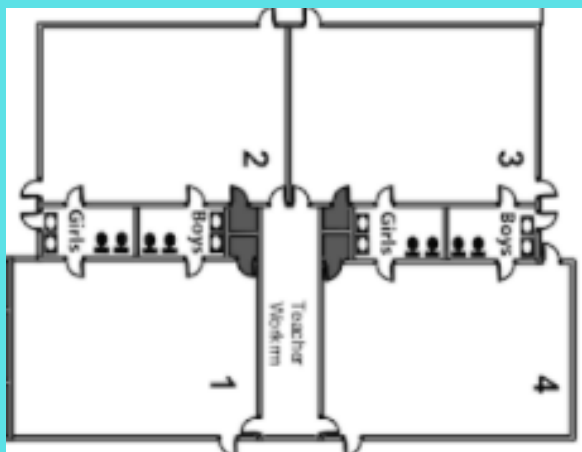
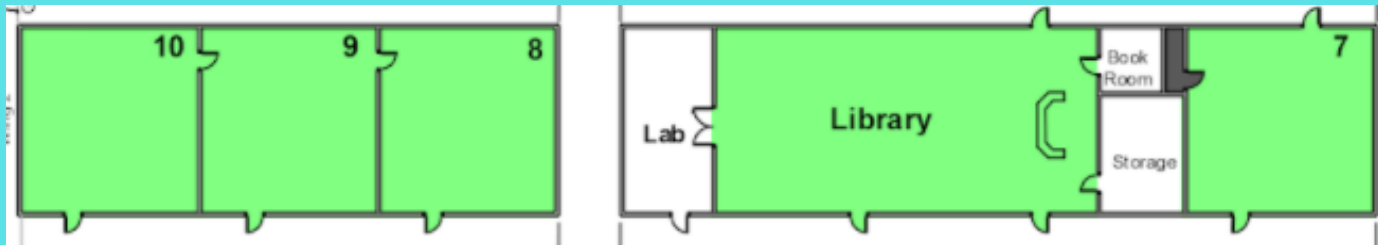
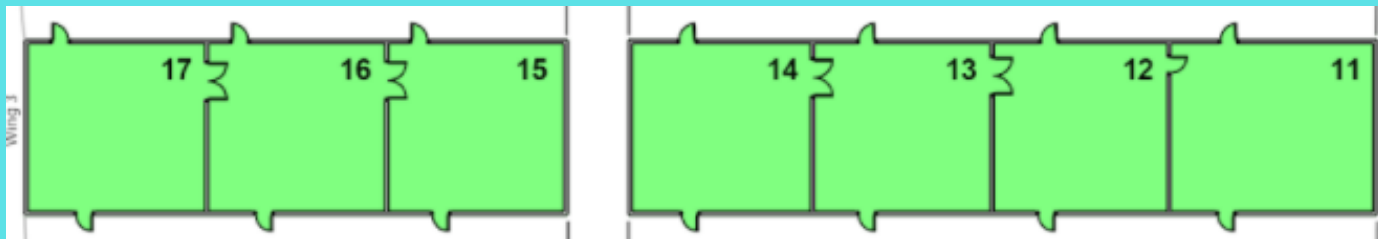
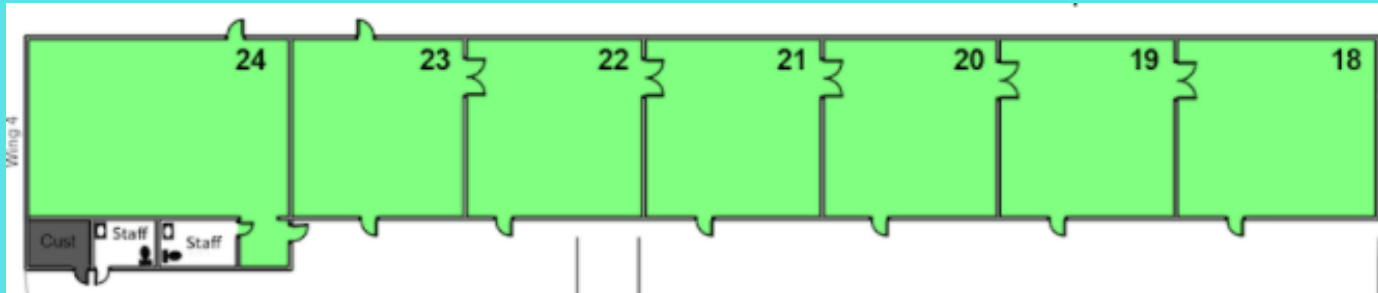
TURNBULL





ARE SCHOOL FACILITIES ABLE TO MAINTAIN CURRENT ENROLLMENT?

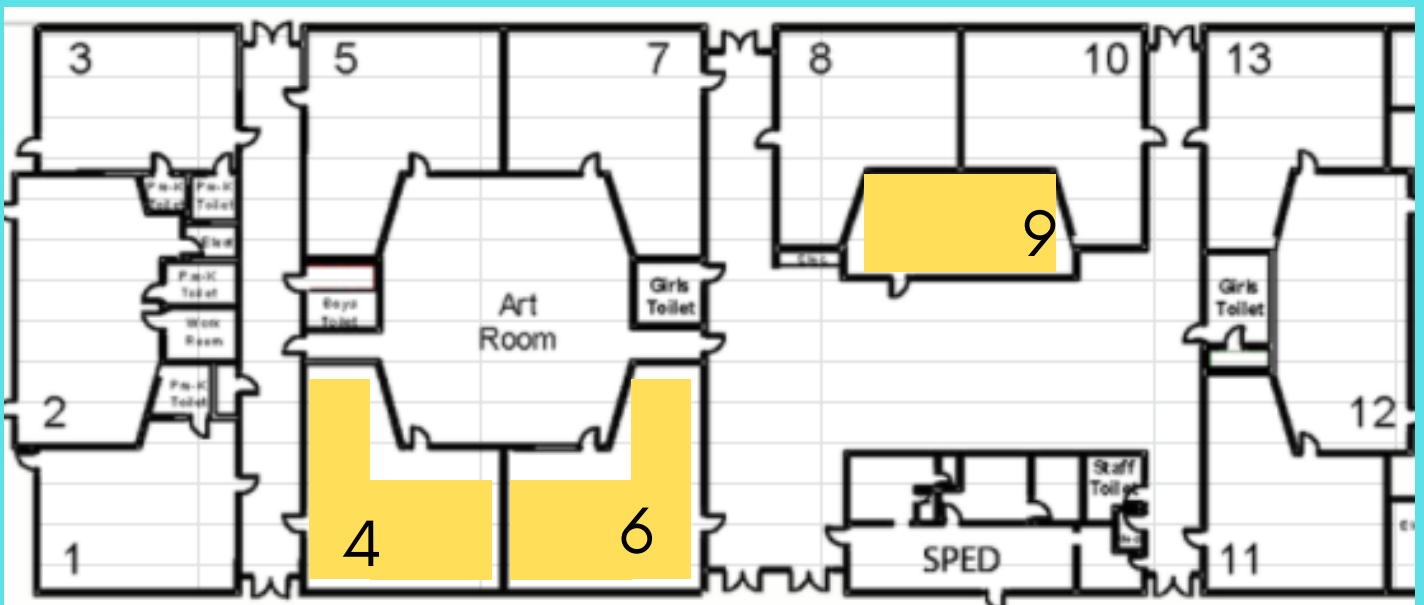
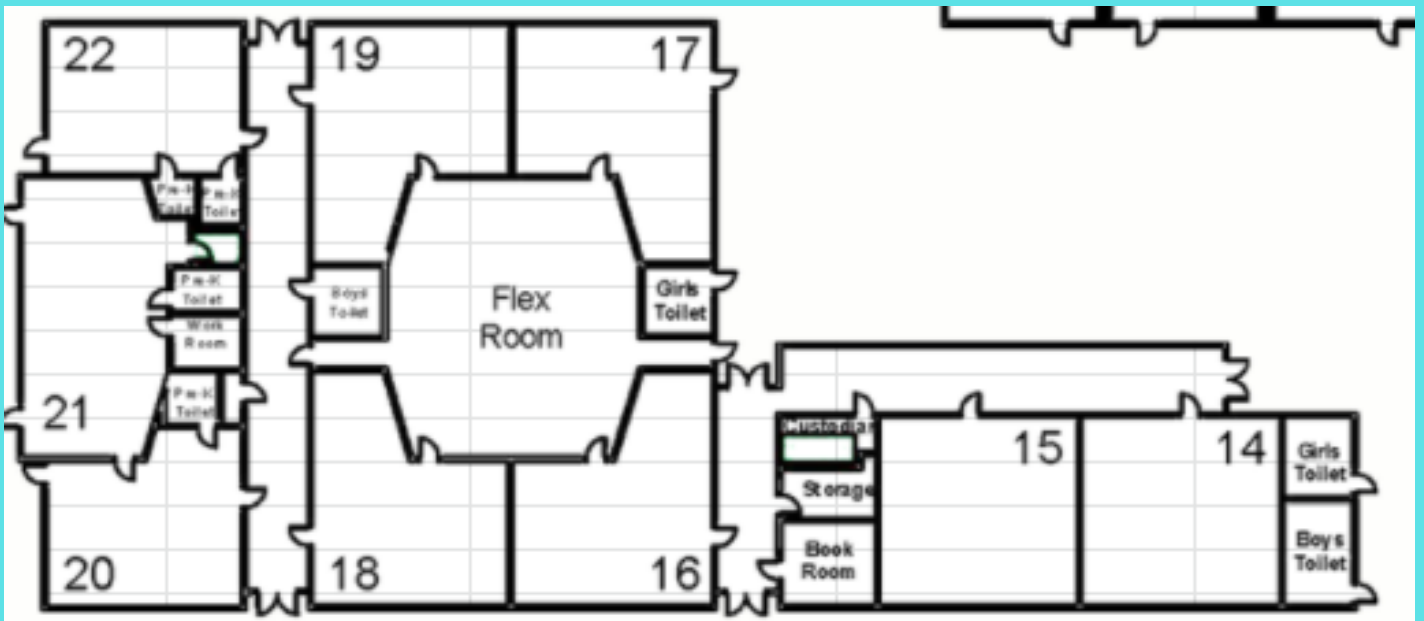
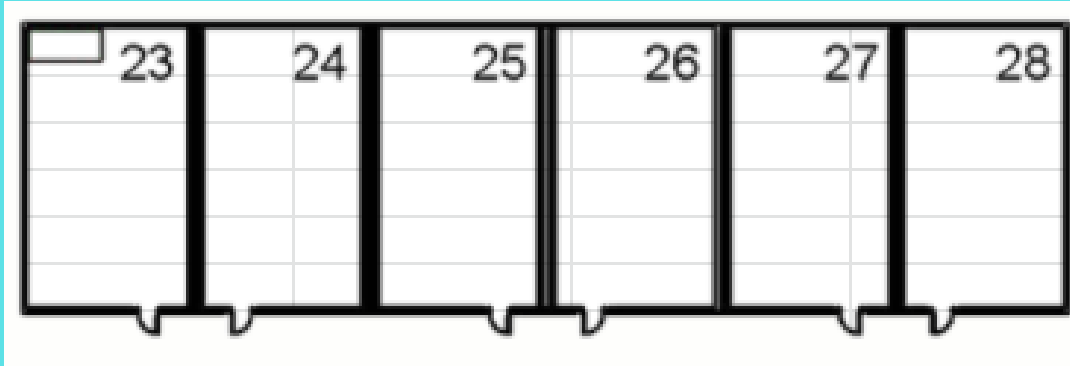
COLLEGE PARK





ARE SCHOOL FACILITIES ABLE TO MAINTAIN CURRENT ENROLLMENT?

FIESTA GARDENS



WOULD THE NCSM SCHOOL BE ABLE TO ACCOMMODATE MORE THAN 425 STUDENTS?

KEY CONSIDERATIONS

-The current College Park campus has sufficient space to house more than 450 students.

-Measure X (passed in 2015) has allocated \$23 million for constructing a new school in NCSM.

-The NCSM school location has a large undeveloped piece of land connected to what is now College Park & Turnbull.

Possible Scenarios should the NCSM school accommodate more than 425 students.

KEY CONSIDERATIONS

-The NCSM school could accommodate grade levels beyond 5th grade.

-The NCSM school could accommodate more than 3 teachers per grade level.

-The NCSM school location could include facilities that promote dedicated community school-based after-school programs.