



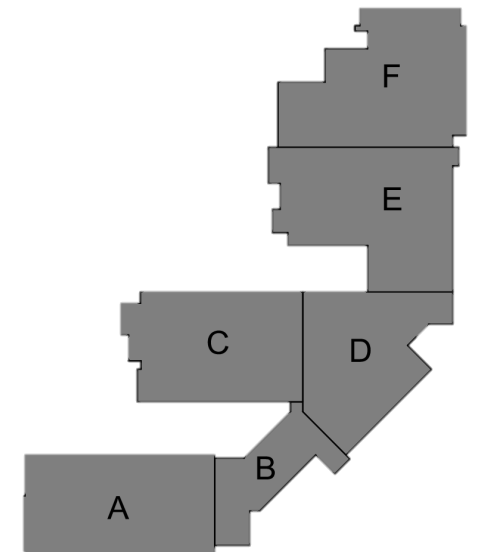
Mary E. Britton Middle School

➤ Completed Work:

- Set up Temporary Heaters in Gym and Area A Complete
- Continue ICF Area E – Pour 1/18/2024
- Continue Masonry at Area E and Area B/D to roof bearing elevation
- Continue MEP and Sprinkler Rough Ins
- Continue Geothermal System

➤ Upcoming Work/Look Ahead:

- Start Block Fill in Gym and locker Room (Test dependent for acceptable conditions)
- Finish 4" CMU at Mechanical Room
- Finish Roof Joist and Decking Areas A and C
- Deck and Joist at Cafeteria
- Grout remaining Hollow Core Planks
- Set up for next topping slab pour
- Continue Roof Joist and Decking in Area A, C and Cafeteria





Mary E. Britton Middle School

Area A – Above Ceiling Roughins and Soffits

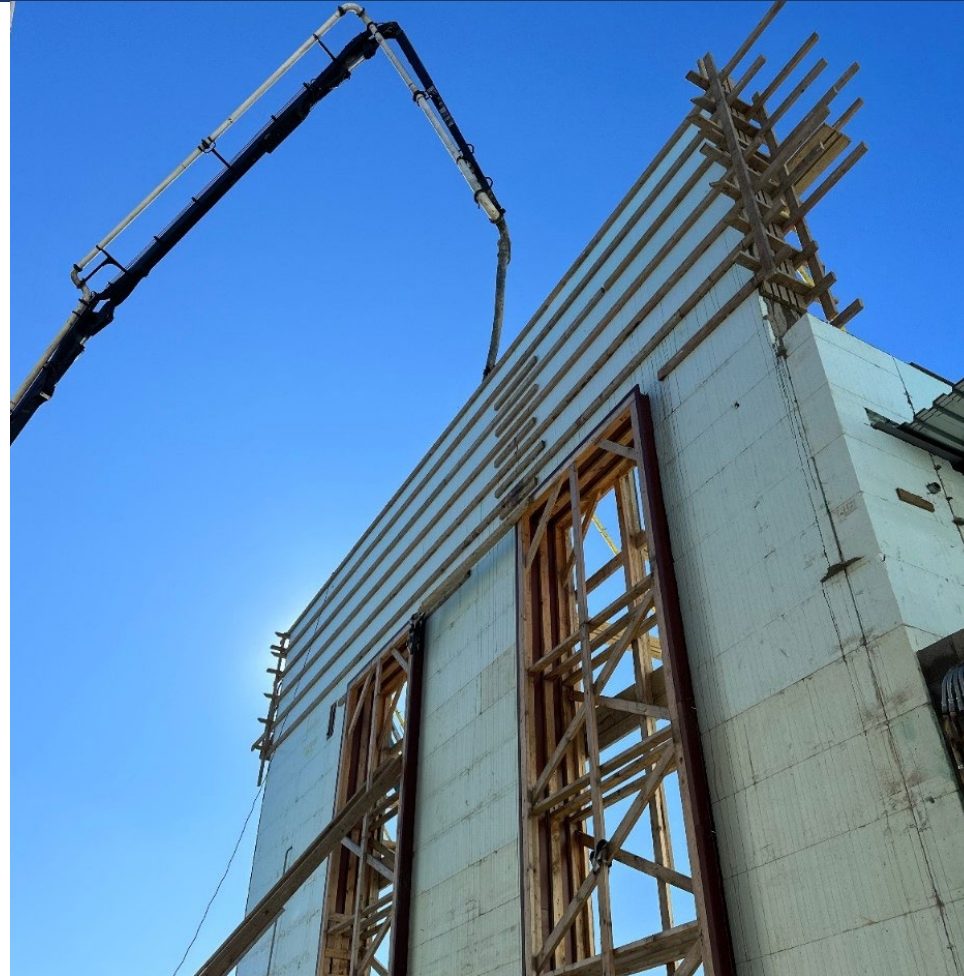


Week Ending January 18, 2024

Mary E. Britton Middle School



Area B – Entry Vestibule ICF Concrete Pour



Week Ending January 18, 2024

Mary E. Britton Middle School



Area C – Mezzanine Work Continues



Week Ending January 18, 2024



Mary E. Britton Middle School

Area E – Cafeteria Roof Framing Complete



Week Ending January 18, 2024

Mary E. Britton Middle School



Area E – Cafeteria Stage CMU Continuing



Week Ending January 18, 2024

Mary E. Britton Middle School



Area E – Storm Shelter ICF Continuing



Week Ending January 18, 2024



Mary E. Britton Middle School

Area F – Brick and Limestone at Gym Locker Room



Week Ending January 18, 2024



Mary E. Britton Middle School

Overall – Steel Decking on Area A and C Wings



Week Ending January 18, 2024