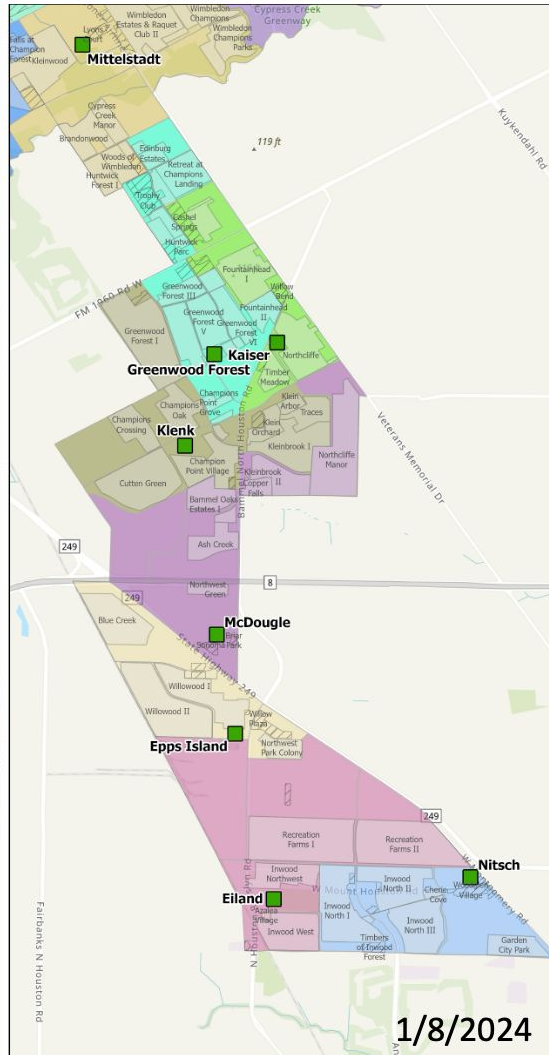
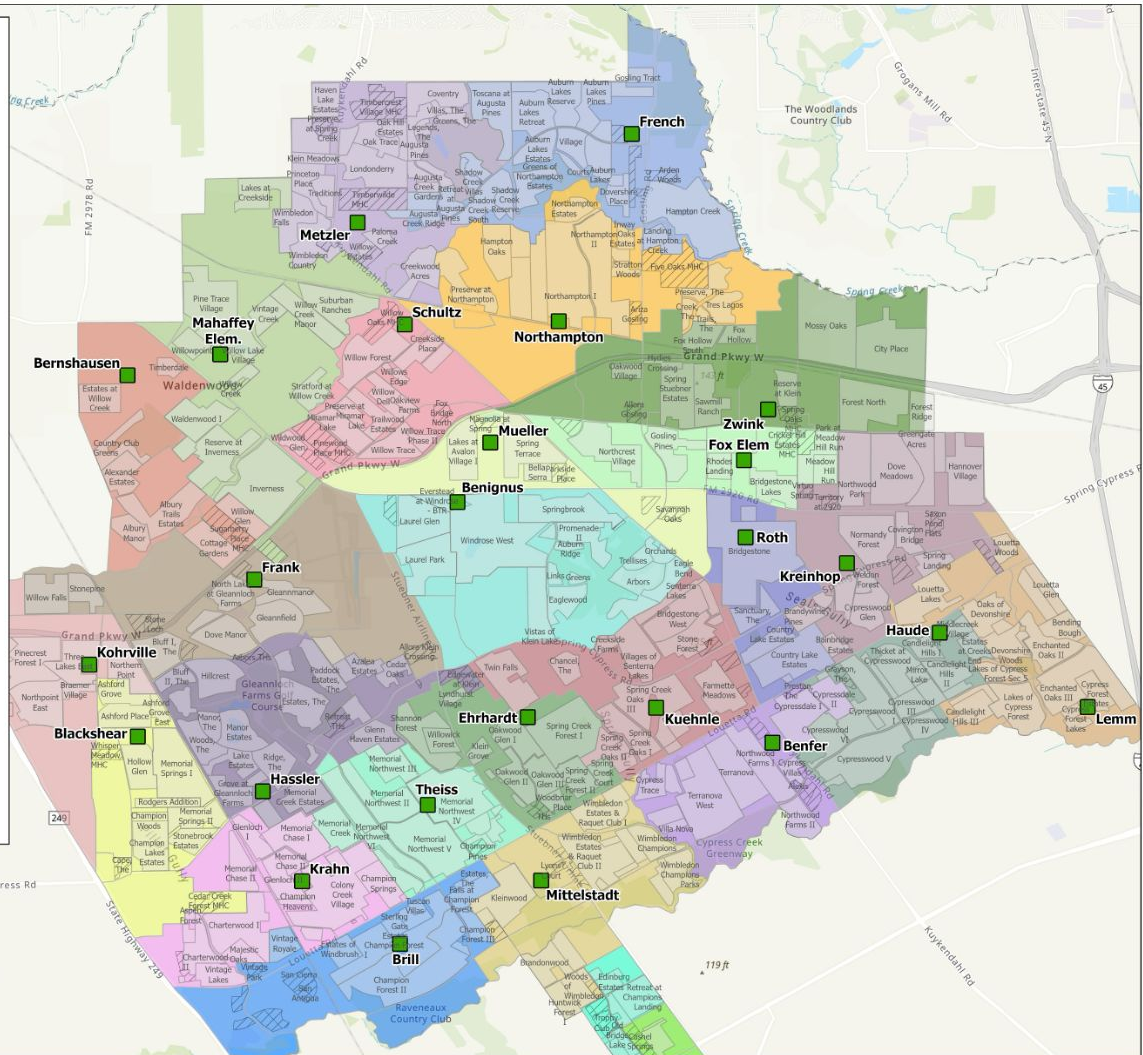


- Proposed Elementary Boundaries**
- Benfer
 - Benignus
 - Bernshausen
 - Blackshear
 - Brill
 - Ehrhardt
 - Eiland
 - Epps Island
 - Fox
 - Frank
 - French
 - Greenwood Forest
 - Hassler
 - Haude
 - Kaiser
 - Klenk
 - Kohrville
 - Krahn
 - Kreinhop
 - Kuehnle
 - Lemm
 - Mahaffey
 - McDougle
 - Metzler
 - Mittelstadt
 - Mueller
 - Nitsch
 - Northampton
 - Roth
 - Schultz
 - Theiss
 - Zwick
- Subdivisions**
- Multi-Family
 - Single-Family



1/8/2024

Final Recommended Elementary Relief Rezoning School Utilization Percentages

	24-25	25-26	26-27	27-28	28-29
Benfer	94%	92%	92%	90%	89%
Benignus	88%	90%	88%	90%	91%
Bernshausen	87%	87%	85%	86%	87%
Blackshear	83%	84%	88%	89%	91%
Brill	87%	90%	92%	93%	93%
Ehrhardt	95%	94%	95%	94%	96%
Fox	91%	91%	90%	89%	88%
Frank	73%	70%	71%	70%	73%
French	86%	83%	82%	82%	82%
Hassler	73%	68%	66%	65%	61%
Haude	81%	80%	79%	79%	80%
Kohrville	81%	79%	77%	78%	80%
Krahn	88%	89%	83%	82%	82%
Kreinhop	73%	78%	82%	82%	80%
Kuehnle	94%	95%	93%	89%	88%
Lemm	81%	83%	85%	88%	88%
Mahaffey	90%	93%	93%	93%	94%

	24-25	25-26	26-27	27-28	28-29
Metzler	97%	96%	95%	93%	91%
Mittelstadt	87%	84%	82%	80%	78%
Mueller	56%	55%	57%	57%	57%
Northampton	82%	86%	91%	94%	100%
Roth	92%	91%	90%	91%	88%
Schultz	91%	91%	93%	96%	97%
Theiss	99%	93%	89%	86%	86%
Zwink	83%	81%	82%	81%	83%
Eiland	84%	84%	83%	82%	82%
Epps Island	97%	93%	90%	89%	88%
Greenwood Forest	82%	81%	80%	81%	82%
Kaiser	87%	87%	87%	85%	84%
Klenk	88%	85%	81%	80%	79%
McDougle	72%	69%	69%	66%	67%
Nitsch	75%	76%	73%	73%	73%