

A. Relief Rezoning



Purpose and Focus of Relief Rezoning

- Provide relief to elementary and intermediate schools facing **capacity challenges**
- **Maximize** the utilization of existing district facilities
- **Defer the timing** of future school construction



TIMELINE FOR REZONING

2024-2025 RELIEF REZONING

MARCH - SEPTEMBER 2023

Collection of demography studies, enrollment capacity, and program information began and continued for 6 months prior to committee meetings.

OCTOBER 2023

1

- Review enrollment, programs, and capacity utilization from district snapshot.
- Principals provide one staff and two engaged parents to represent each school in rezoning meetings.
- Rezoning website launches.

NOVEMBER 2023

2

- Present demography data at November board meeting.
- District holds rezoning committee meetings.
- Collateral and feedback from rezoning meetings are shared with community through website.

DECEMBER 2023

3

- Committee recommends elementary and intermediate rezoning options to the community for final feedback.

JANUARY 2024

4

- Community survey and results are finalized.
- Zoning committee presents a report to the Klein ISD Board of Trustees.
- Recommended elementary and intermediate school rezoning options are presented to the Board of Trustees.

FEBRUARY 2024

5

- Request Board of Trustees approval on final zoning recommendations.

SPRING 2024

6

- Once rezoning is approved by the Board, communication will be shared with impacted schools and families for the 2024-25 school year.

Relief Rezoning Committee Meeting Dates



Intermediate Meetings	Elementary Meetings
<p>Tuesday, November 14</p> <ul style="list-style-type: none">● 2:00 – Principals and Teachers● 6:00 – Principals and Parents	<p>Tuesday, November 16</p> <ul style="list-style-type: none">● 2:00 – Principals and Teachers● 6:00 – Principals and Parents
<p>Thursday, November 28</p> <ul style="list-style-type: none">● 2:00 – Principals and Teachers● 6:00 – Principals and Parents	<p>Thursday, November 30</p> <ul style="list-style-type: none">● 2:00 – Principals and Teachers● 6:00 – Principals and Parents

170 Committee Members

Parents, Principals, and Teachers
Representing Every Elementary and Intermediate School

Relief Rezoning Committee Members

- The committee was comprised of parents, teachers, and principals representing **every elementary and intermediate school**
- Members were asked to not only represent their school but to also be **objective about making the best decisions for the entire school district**

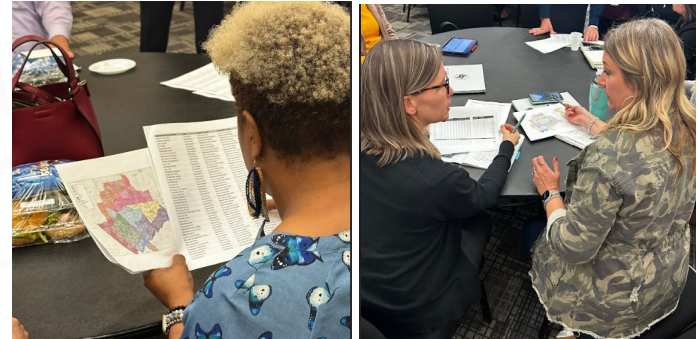


Relief Rezoning Committee Objectives

Committee members were provided information on enrollment, future growth, and school capacity to help committee members objectively analyze information.

They focused on:

- Creating more **balanced student enrollment** at each school
- Keeping building capacity **at or below 95% utilization** throughout the next 5 years



Relief Rezoning Committee Meetings

During the first meeting, committee members

- Learned about **demography data**, **projected growth**, and **school capacity** based on PASA's analysis of the district
- Analyzed **initial draft map** and **capacity utilization** for elementary and intermediate schools
- Objectively reviewed data and **provided feedback to make the best decision for the entire school district**



Relief Rezoning Committee Meetings

During the second meeting, committee members

- **Reviewed feedback themes** from the website form for feasibility of changes
- Discussed **proposed map changes**
- Collaborated and provided final **feedback considerations**



2024-2025 Klein ISD Relief Rezoning



The process of creating new attendance zones is driven by data related to new home construction, campus growth, and other trends. We then use this data to develop multiple scenarios for committee consideration.

Unlike attendance zonings of the past that often centered on the opening of a new school, this upcoming rezoning is meant to accomplish the following main objectives:

- Provide relief to current enrollment numbers
- Maximize the usage of district facilities
- Defer the timing of future school construction

Relief Rezoning Community Updates

- + DEC 4, 2023 - Update #3
- + NOV 17, 2023 - Update #2

Relief Rezoning Meeting Presentations

ELEMENTARY RELIEF REZONING MEETING PRESENTATION - NOV 16

INTERMEDIATE RELIEF REZONING MEETING PRESENTATION - NOV 14

Relief Rezoning Feedback Form

Relief Rezoning Feedback Form

Formulario de Retroalimentación para el Rezoning de Alivio de Klein ISD

Start press Enter

● Takes 45 sec

www.kleinisd.net/zoning

Comprehensive Rezoning Website



SELECT A SCHOOL

DASHBOARD ENROLL CAREERS FIND IT FAST 🔍 KEEP KLEIN SAFE

ABOUT KLEIN DEPARTMENTS  FAMILIES COMMUNITY

2024-2025 Klein ISD Relief Rezoning



The process of creating new attendance zones is driven by data related to new home construction, campus growth, and other trends. We then use this data to develop multiple scenarios for committee consideration.

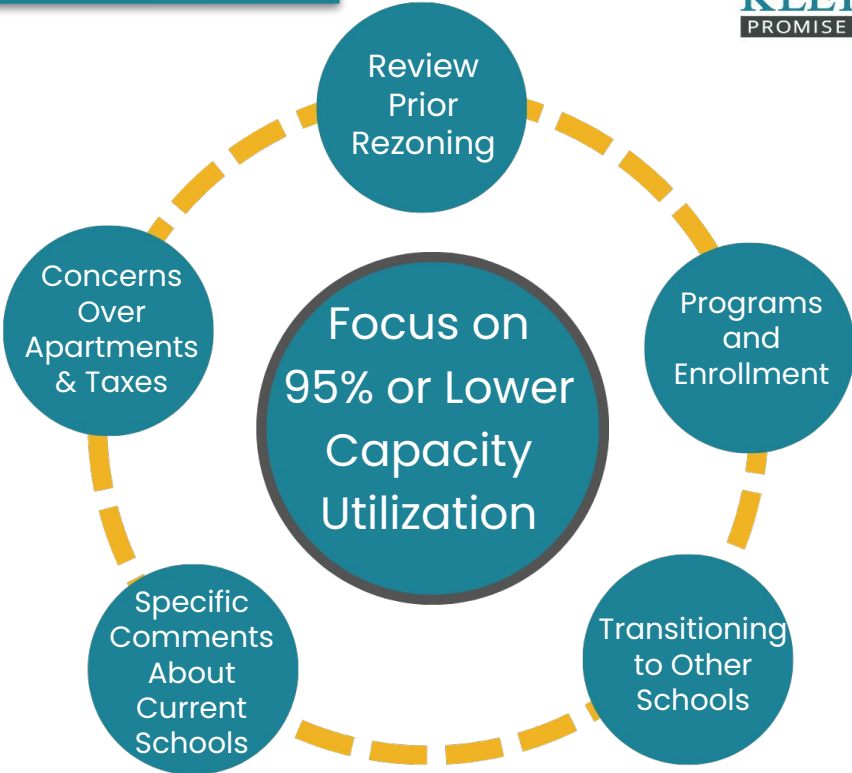
Unlike attendance zonings of the past that often centered on the opening of a new school

IN THIS SECTION

- About Klein ISD >
- Departments ▾
 - Business & Financial Services >
 - Communications & Planning ▾
 - Communications ▾
- Connect with Klein
- Back-to-School Hub
- Bad Weather Information
- Publications
- High School Graduation Ceremonies
- Bond Information
- 2024-2025 Klein ISD Relief Rezoning ▾

1,622

**Klein ISD
Staff &
Parent
Responses**



Every submission has been reviewed and considered to determine feasibility for revisions.

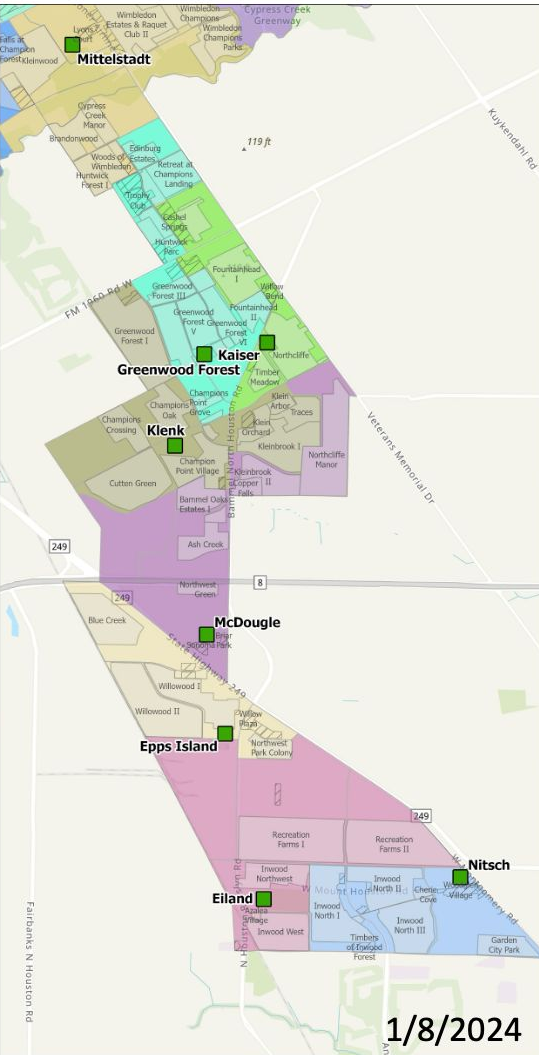
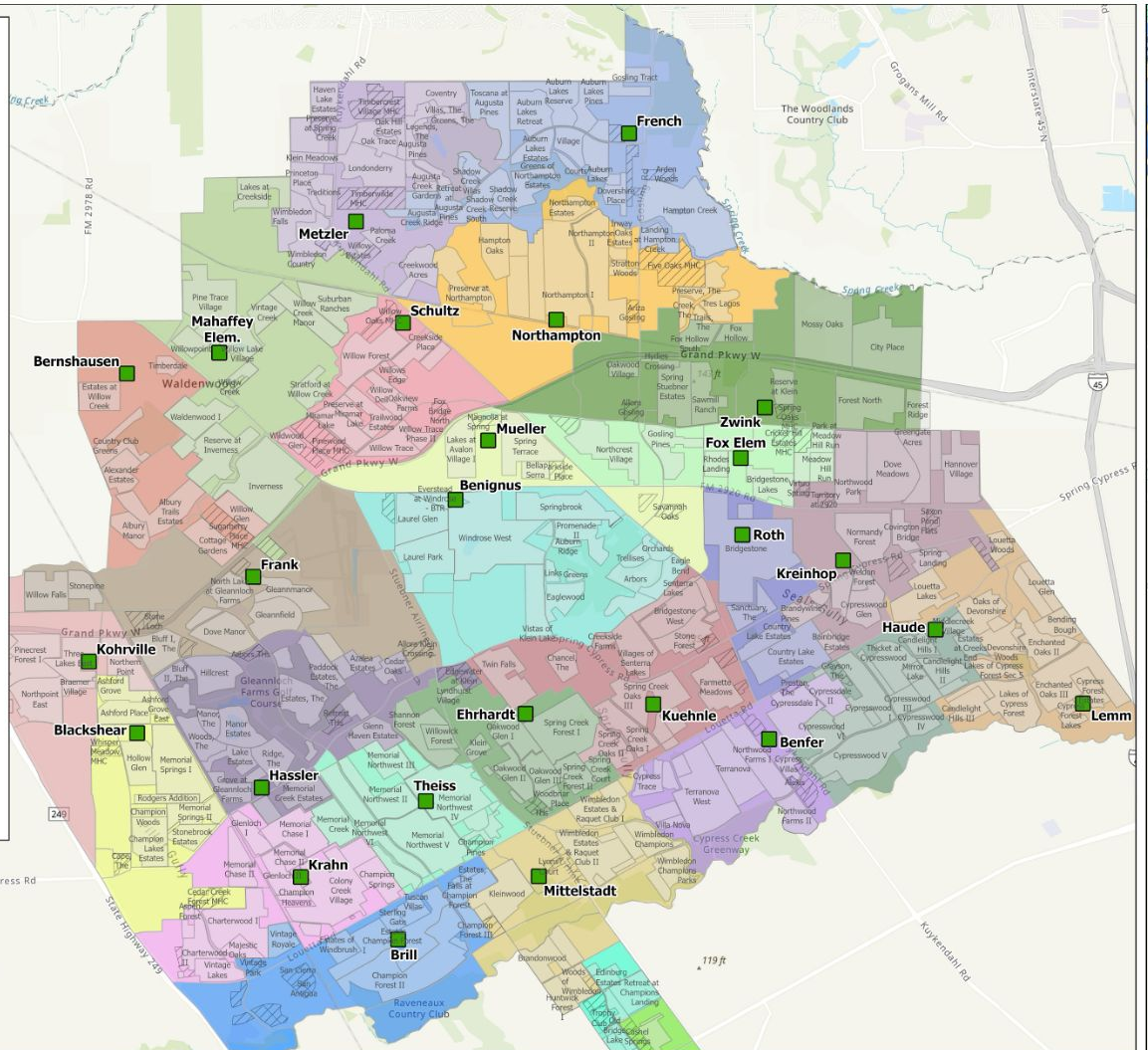
Final Recommended Elementary Relief Rezoning School Utilization Percentages

	24-25	25-26	26-27	27-28	28-29
Benfer	94%	92%	92%	90%	89%
Benignus	88%	90%	88%	90%	91%
Bernshausen	87%	87%	85%	86%	87%
Blackshear	83%	84%	88%	89%	91%
Brill	87%	90%	92%	93%	93%
Ehrhardt	95%	94%	95%	94%	96%
Fox	91%	91%	90%	89%	88%
Frank	73%	70%	71%	70%	73%
French	86%	83%	82%	82%	82%
Hassler	73%	68%	66%	65%	61%
Haude	81%	80%	79%	79%	80%
Kohrville	81%	79%	77%	78%	80%
Krahn	88%	89%	83%	82%	82%
Kreinhop	73%	78%	82%	82%	80%
Kuehnle	94%	95%	93%	89%	88%
Lemm	81%	83%	85%	88%	88%
Mahaffey	90%	93%	93%	93%	94%

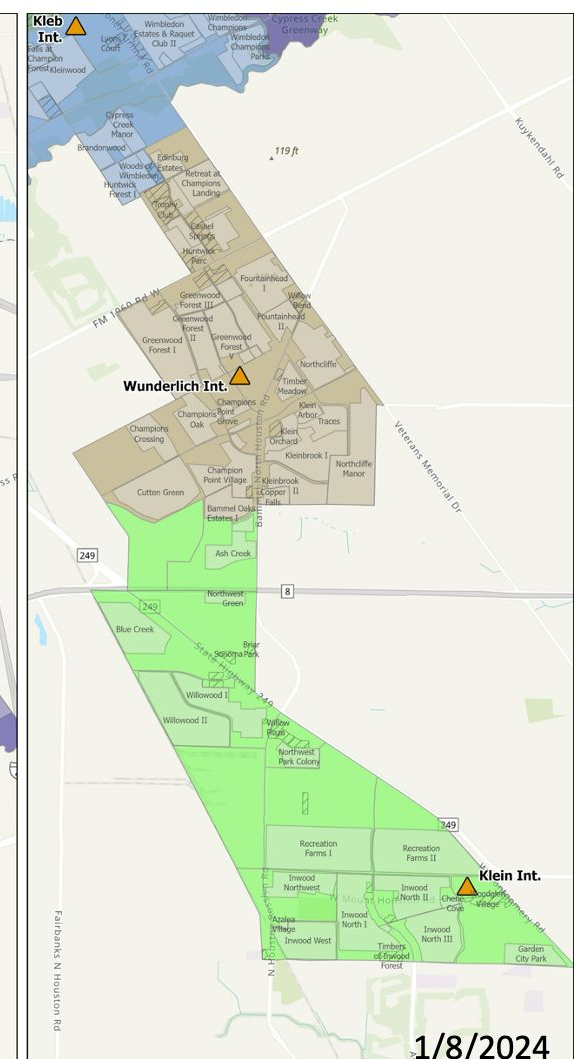
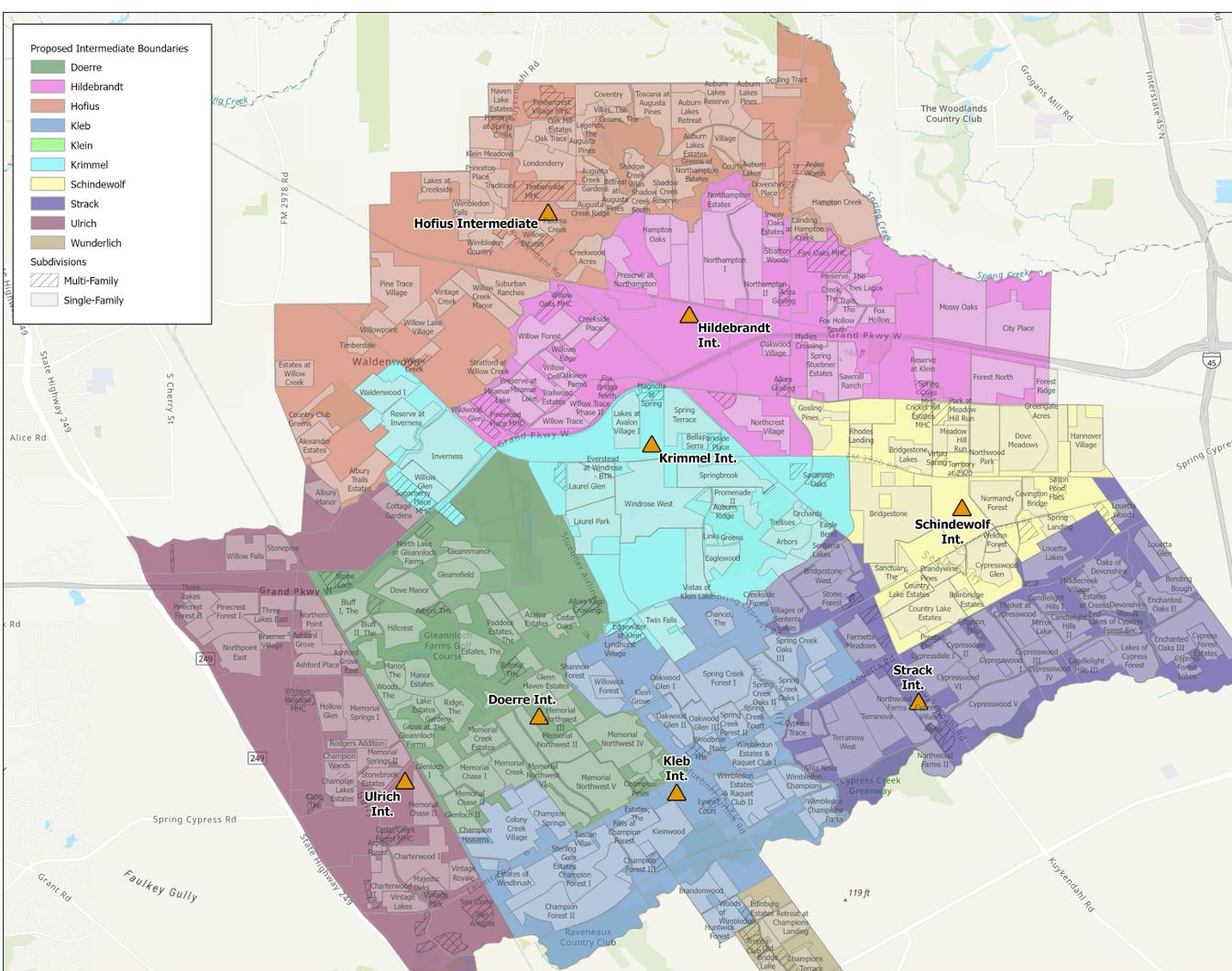
	24-25	25-26	26-27	27-28	28-29
Metzler	97%	96%	95%	93%	91%
Mittelstadt	87%	84%	82%	80%	78%
Mueller	56%	55%	57%	57%	57%
Northampton	82%	86%	91%	94%	100%
Roth	92%	91%	90%	91%	88%
Schultz	91%	91%	93%	96%	97%
Theiss	99%	93%	89%	86%	86%
Zwink	83%	81%	82%	81%	83%
Eiland	84%	84%	83%	82%	82%
Epps Island	97%	93%	90%	89%	88%
Greenwood Forest	82%	81%	80%	81%	82%
Kaiser	87%	87%	87%	85%	84%
Klenk	88%	85%	81%	80%	79%
McDougle	72%	69%	69%	66%	67%
Nitsch	75%	76%	73%	73%	73%

Final Recommended Relief Rezoning Plan **Elementary Schools** 2024-2025

- Proposed Elementary Boundaries**
- Benfer
 - Benignus
 - Bernshausen
 - Blackshear
 - Brill
 - Ehrhardt
 - Eiland
 - Epps Island
 - Fox
 - Frank
 - French
 - Greenwood Forest
 - Hassler
 - Haude
 - Kaiser
 - Klenk
 - Kohrville
 - Krahn
 - Kreinhop
 - Kuehnl
 - Lemm
 - Mahaffey
 - McDougle
 - Metzler
 - Mittelstadt
 - Mueller
 - Nitsch
 - Northampton
 - Roth
 - Schultz
 - Theiss
 - Zwick
- Subdivisions**
- Multi-Family
 - Single-Family



Final Recommended Relief Rezoning Plan **Intermediate Schools** 2024-2025



Final Recommended Intermediate Relief Rezoning School Utilization Percentages

Intermediates					
	24-25	25-26	26-27	27-28	28-29
Doerre	91%	92%	90%	88%	83%
Hildebrandt	78%	77%	79%	84%	88%
Hofius	88%	95%	95%	97%	96%
Kleb	95%	93%	93%	93%	94%
Klein	90%	87%	91%	90%	87%
Krimmel	92%	90%	90%	92%	94%
Schindewolf	86%	82%	81%	81%	84%
Strack	93%	92%	91%	94%	92%
Ulrich	92%	94%	98%	98%	95%
Wunderlich	87%	86%	84%	84%	84%

Thank You
and
Questions