

# RPS 205

# Organizational Chart

Board Date 12/19/23



# Table of Contents

## **Superintendent**

[Superintendent's Cabinet](#)

[Superintendent's Office](#)

## **Academics**

[Director Overview](#)

[Bilingual](#)

[College & Career Readiness](#)

[Curriculum](#)

[MTSS](#)

[Early Childhood](#)

[Improvement & Innovation](#)

## **Communications**

[Director & Manager Overview](#)

[Communications & Family](#)

[Engagement](#)

[Process Improvement](#)

[Welcome Center](#)

[Athletics & Fine Arts](#)

## **Diversity, Equity, and Inclusion**

[Department Overview](#)

## **Finance**

[Director Overview](#)

[Finance & Budgeting](#)

[Payroll & Purchasing](#)

## **Human Resources**

[Director & Manager Overview](#)

[Human Resources](#)

[Talent Development](#)

[Allocations & Compliance](#)

[Benefits & Accountability](#)

## **Information and Technology**

[Director Overview](#)

[Educational Technology](#)

[Information Services](#)

[IT/IS Security](#)

[Technology Services](#)

## **Operations**

[Director Overview](#)

[Design & Construction](#)

[Facilities](#)

[Nutrition Services](#)

[Operations](#)

[Transportation](#)

## **Schools Team**

[Director Overview](#)

[School](#)

[Breakdowns](#)

## **Student Services**

[Director Overview](#)

[Special Education](#)

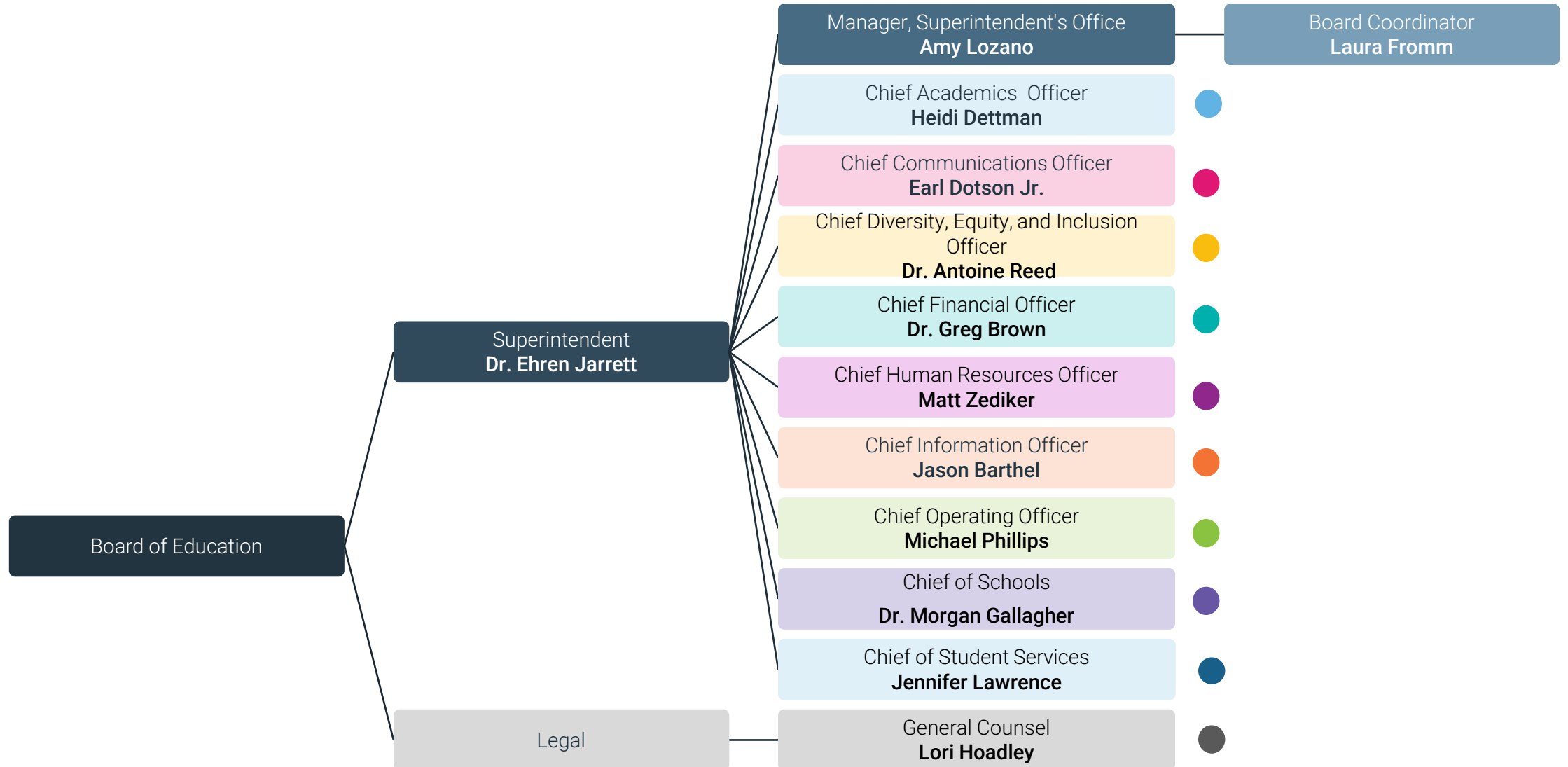
[Discipline and Compliance](#)

[Adaptive Learning](#)

## **Legal**

[Department Overview](#)

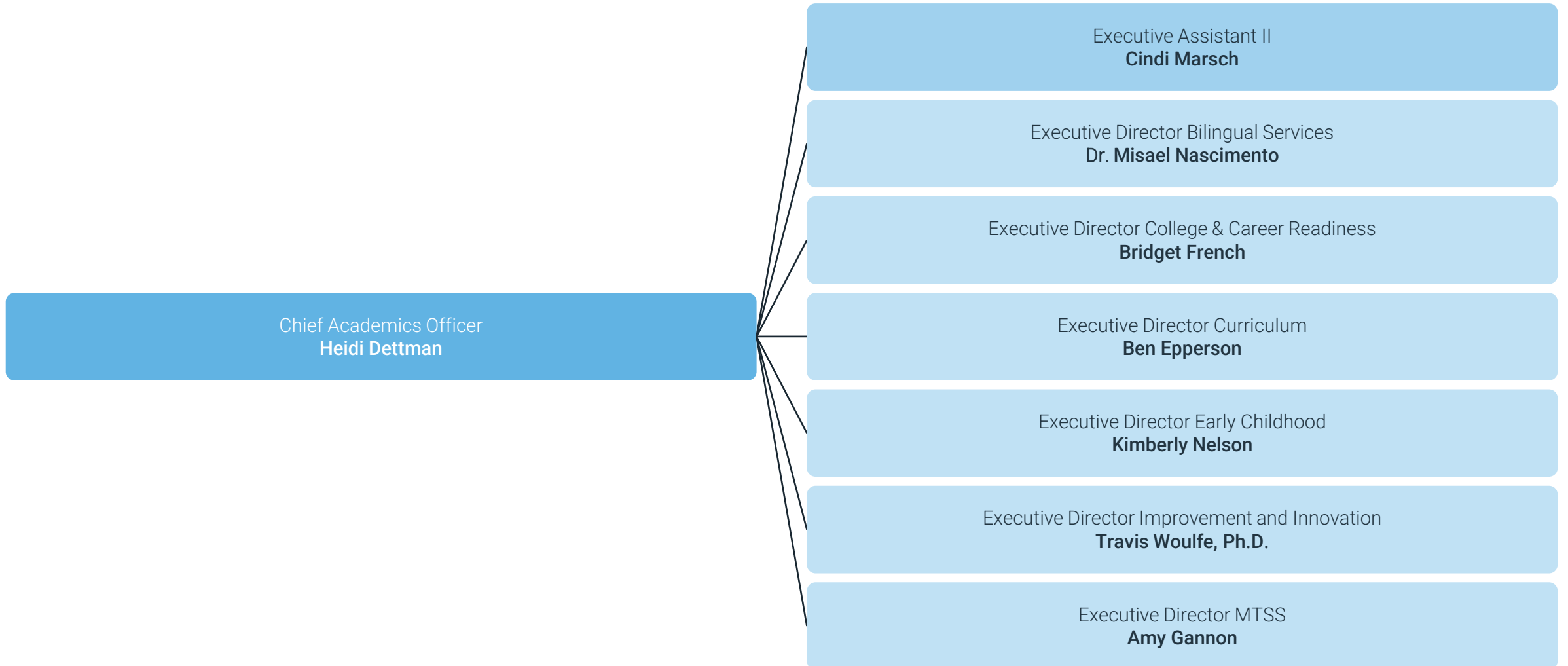
# Superintendent's Cabinet



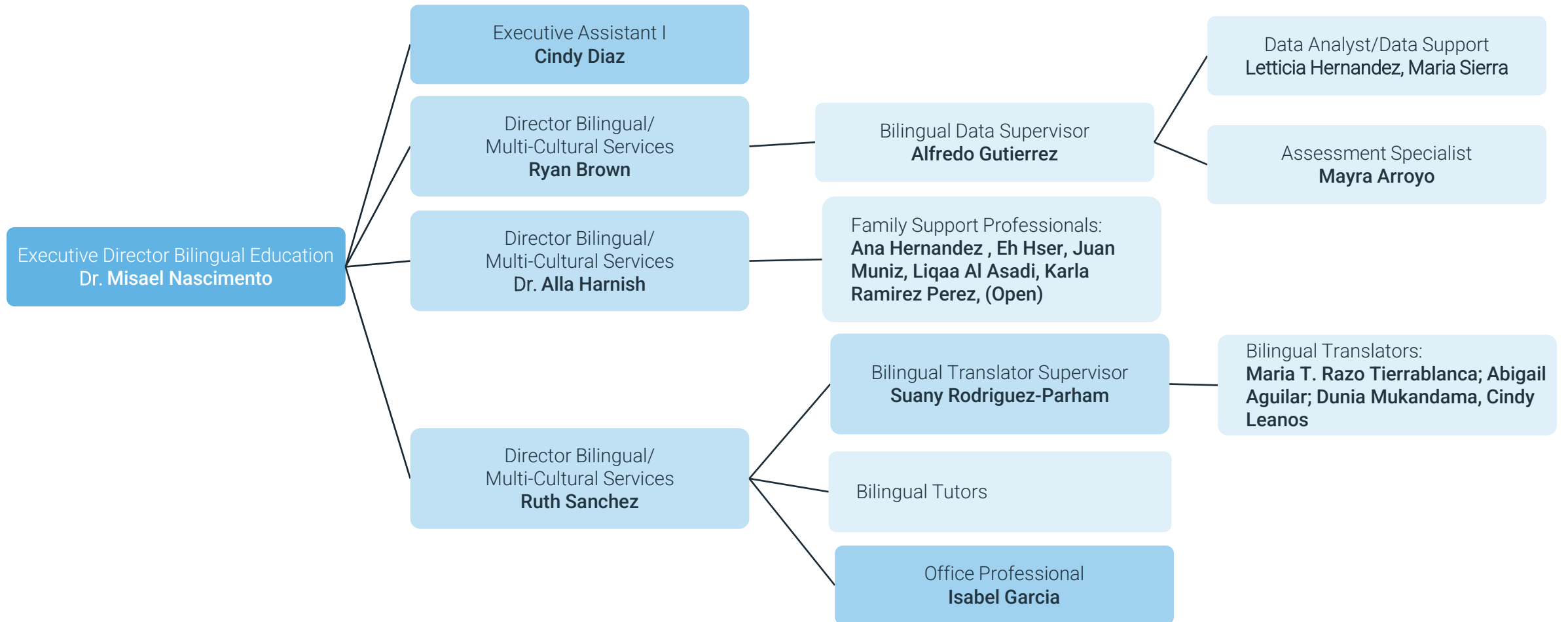
# Superintendent's Office



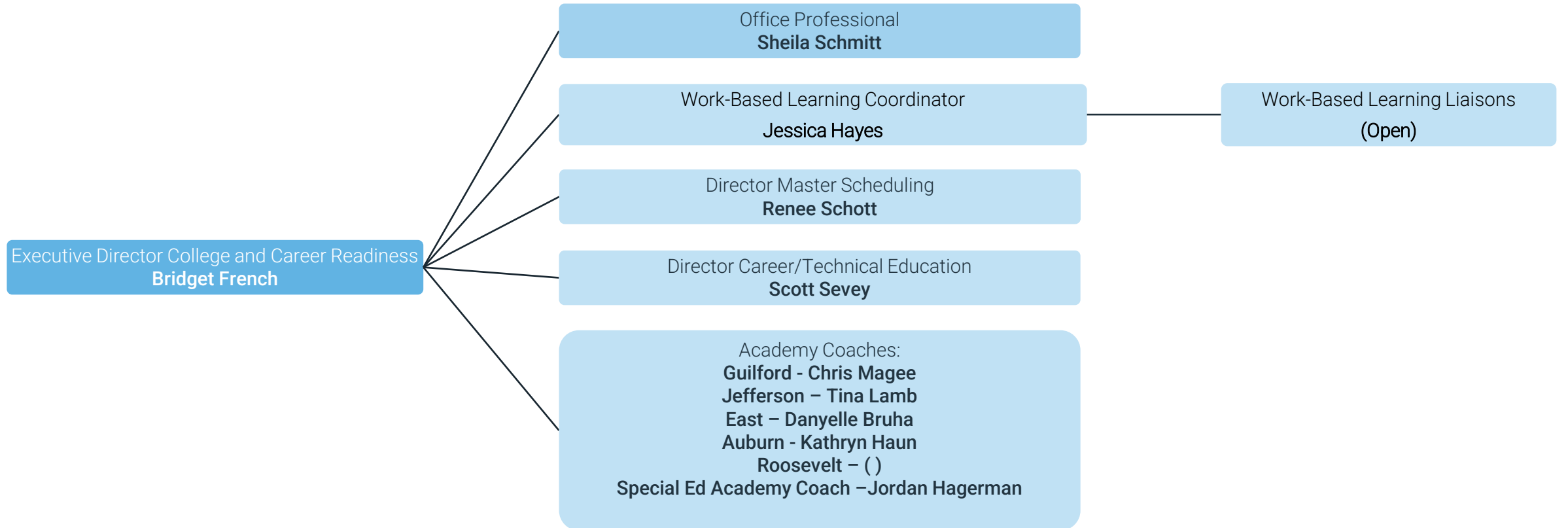
# Academics: Director Overview



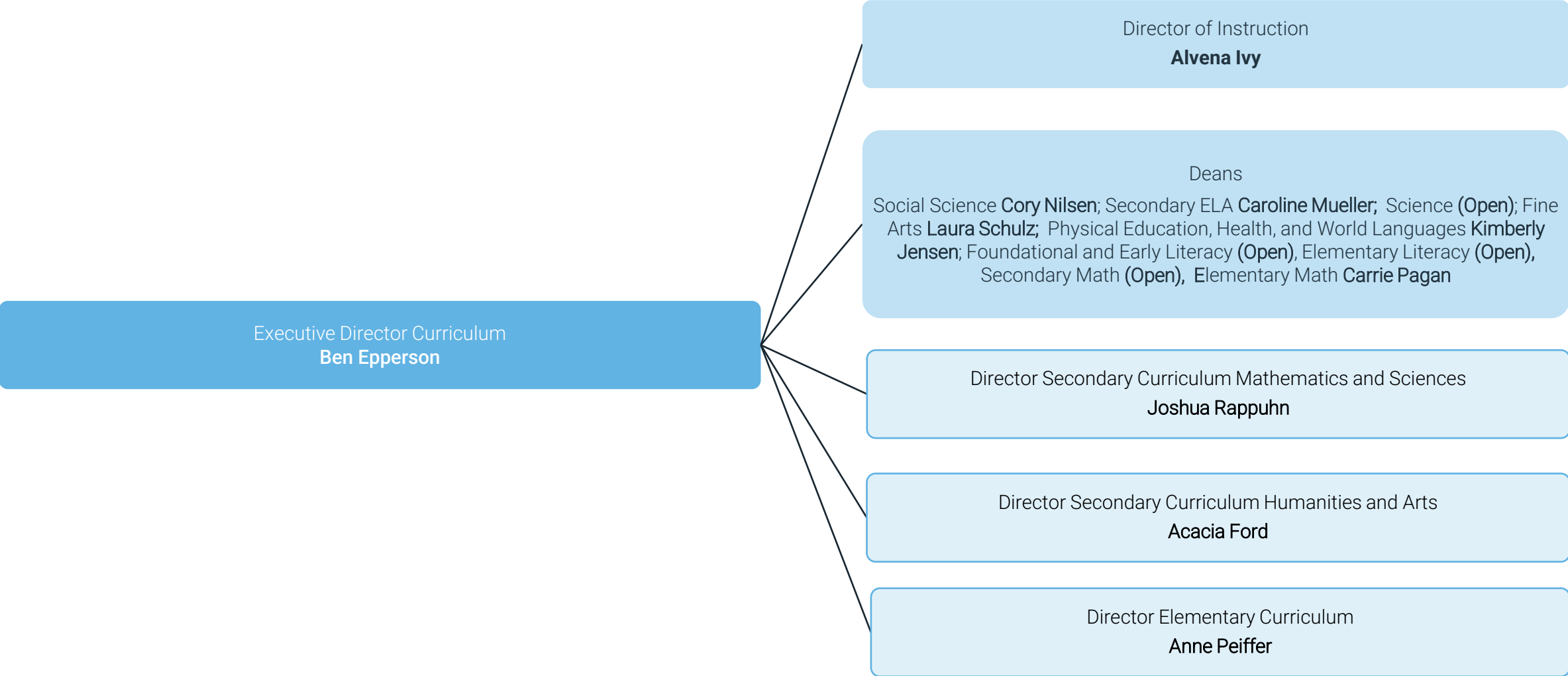
# Academics: Bilingual Department



# Academics: College & Career Readiness



# Academics: Curriculum





# Academics: MTSS

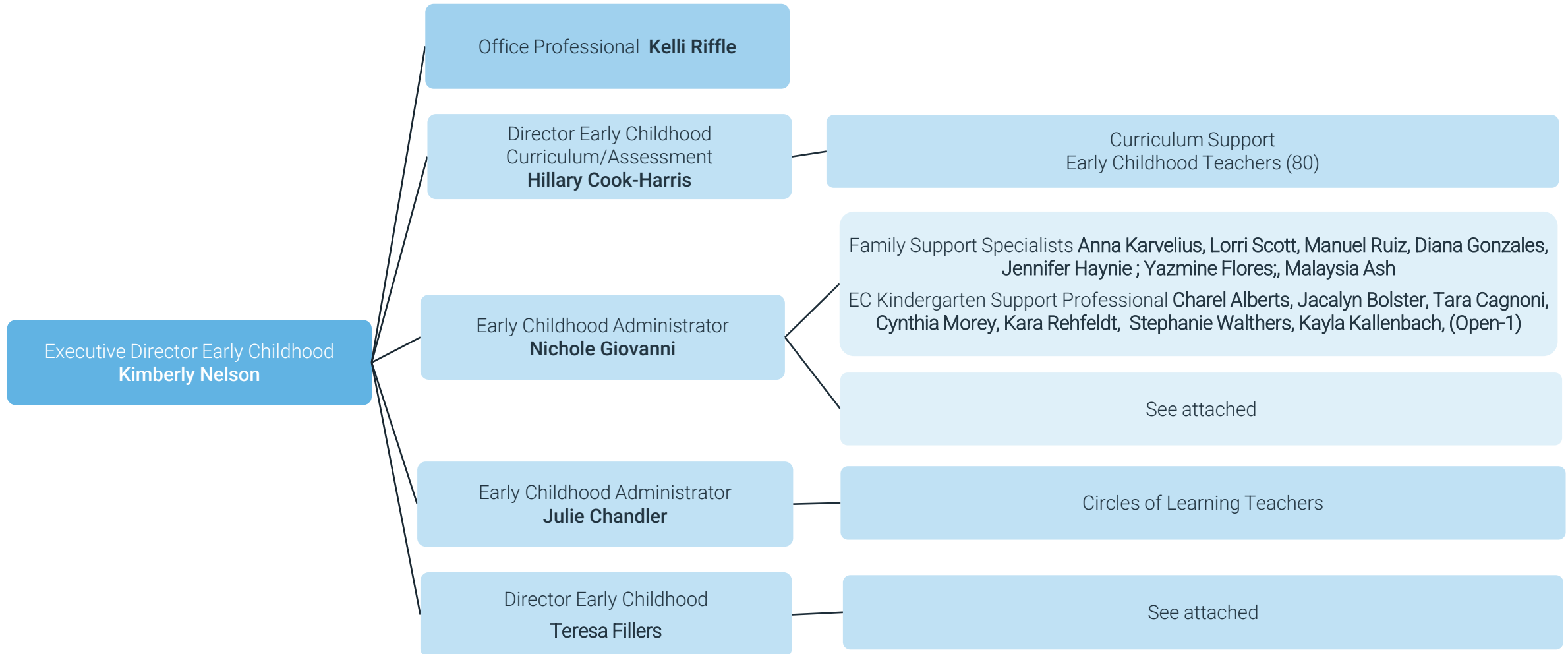
|

Executive Director MTSS  
**Amy Gannon**

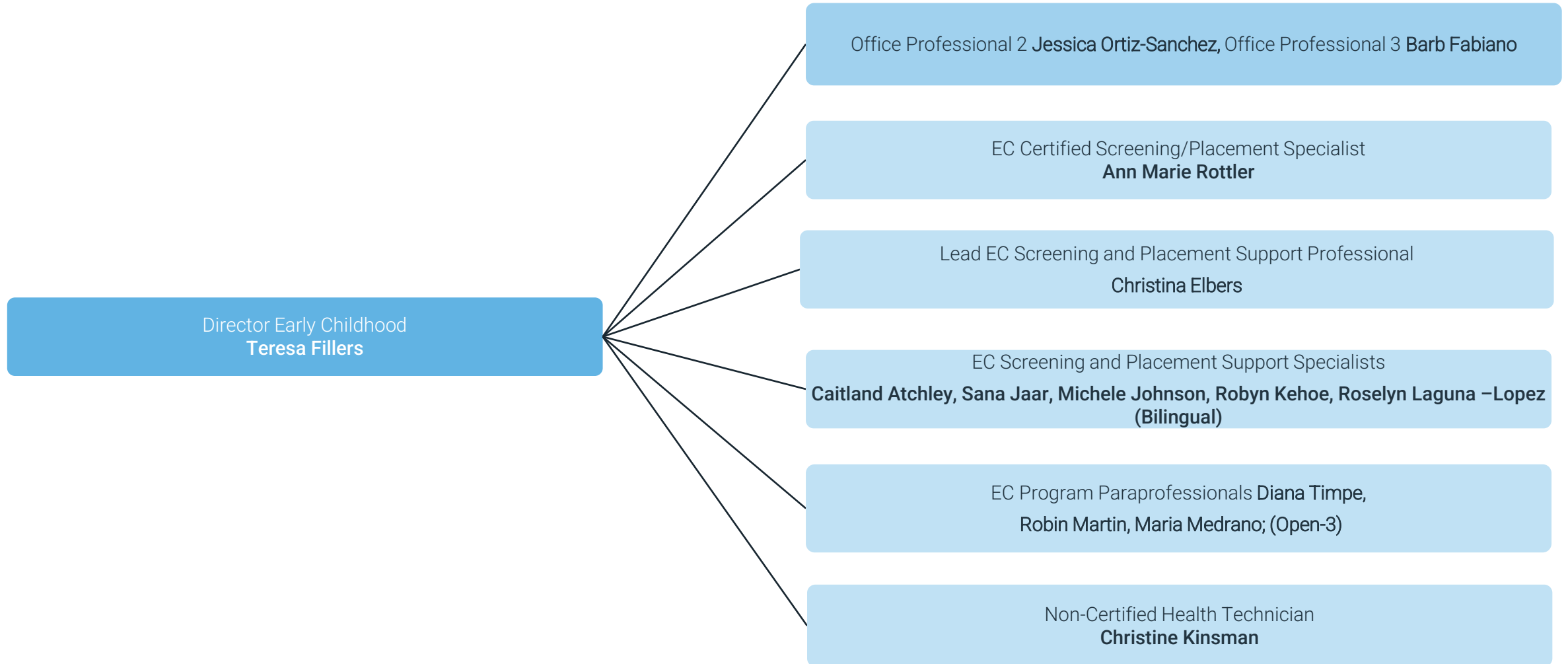
Dean of MTSS  
Mickey Ryall, Dawn Monge, Sonya Oefelein, Sarah McCusker

Title I Teachers; MTSS Behavior Coaches **Megan Holmberg; Karen Brunner; Allison Slama; Katherine Andrews**

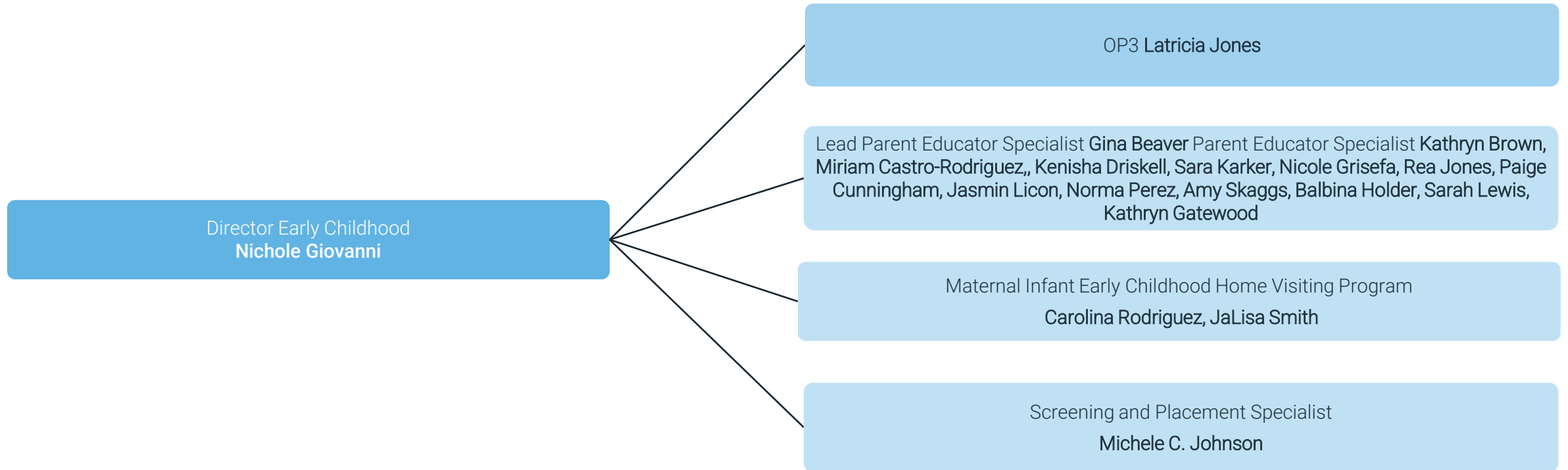
# Academics: Early Childhood



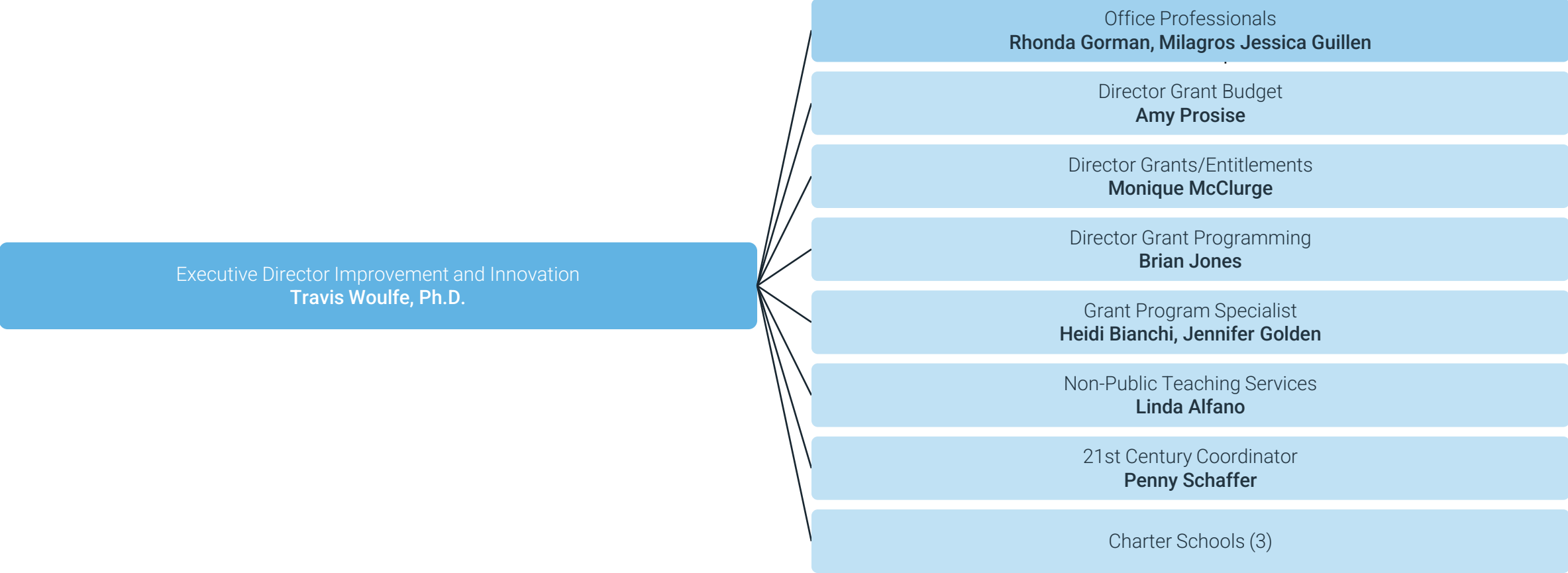
# Academics: Early Childhood



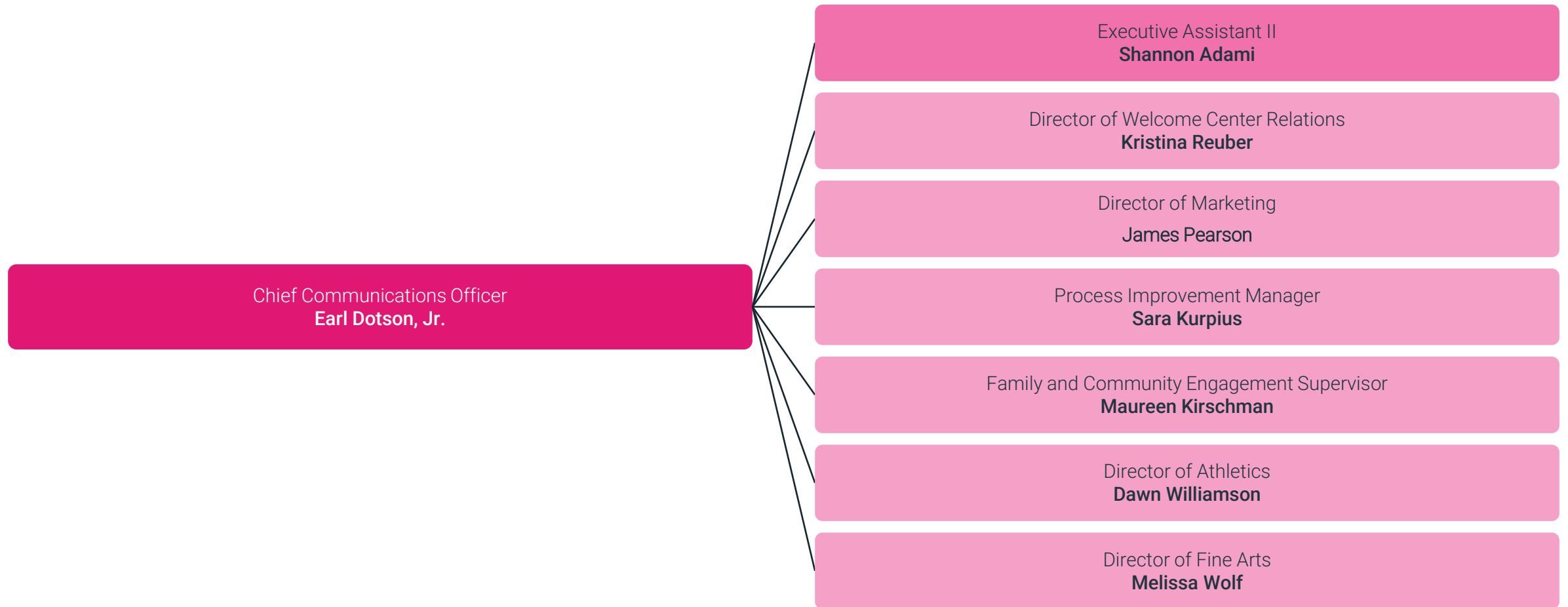
# Academics: Early Childhood



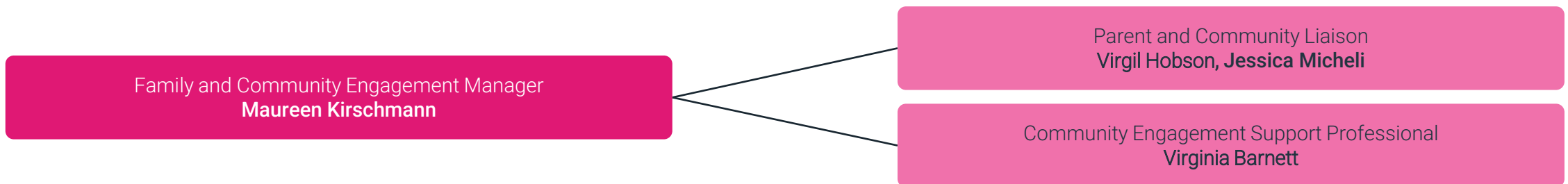
# Academics: Improvement & Innovation



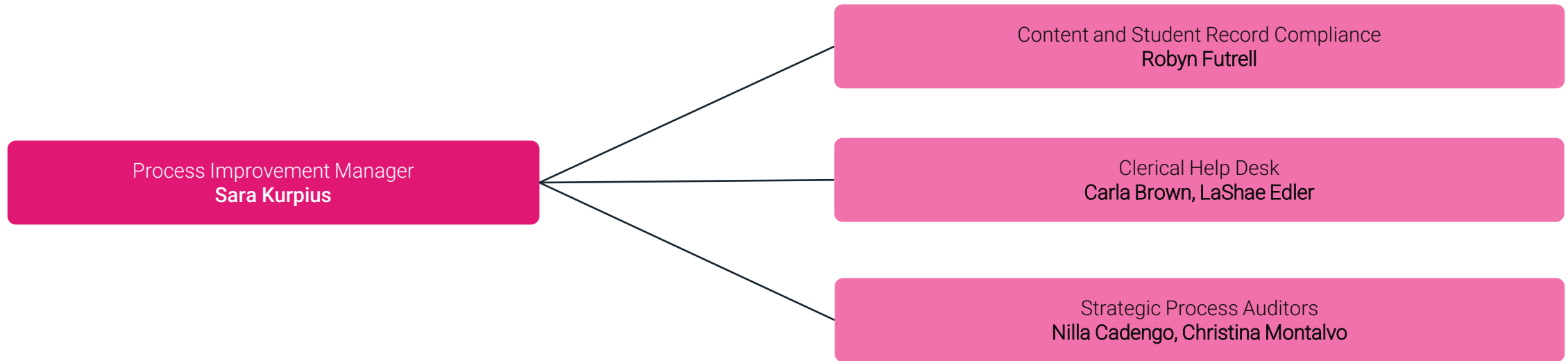
# Communications Director Overview



# Communications & Family and Community Engagement

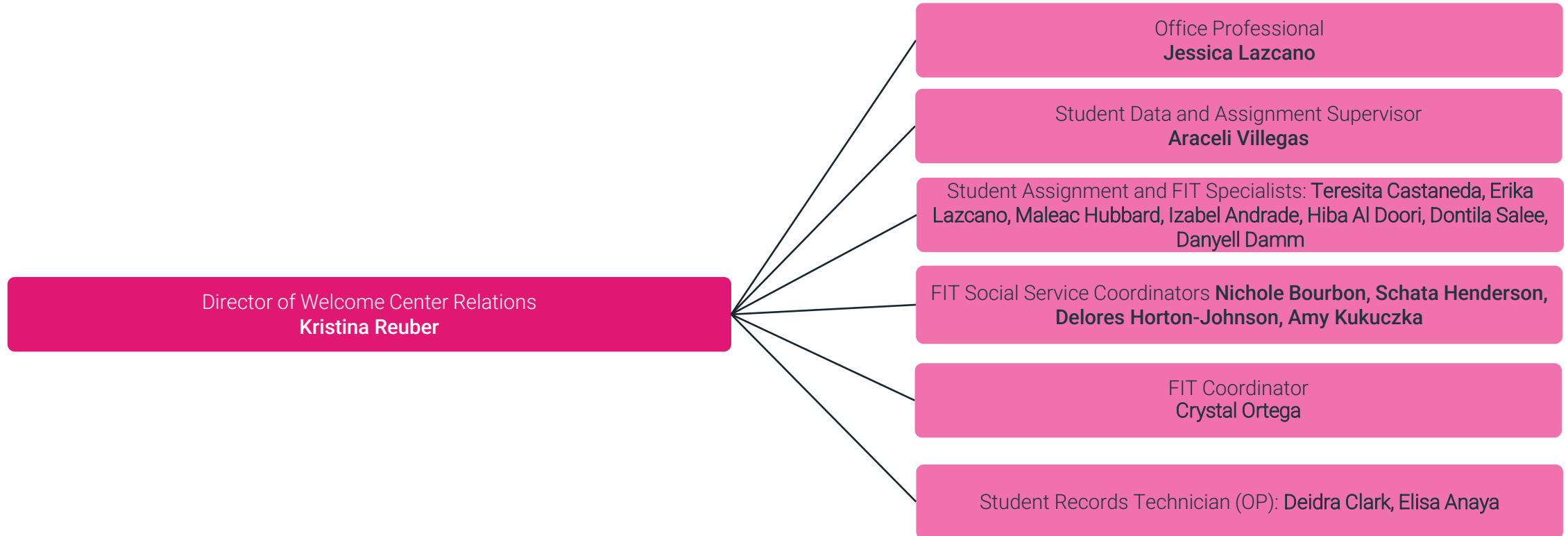


# Process Improvement





# Welcome Center



# Athletics & Fine Arts

Director of Athletics  
**Dawn Williamson**

Athletic Support Specialist  
**Abby Oleson**

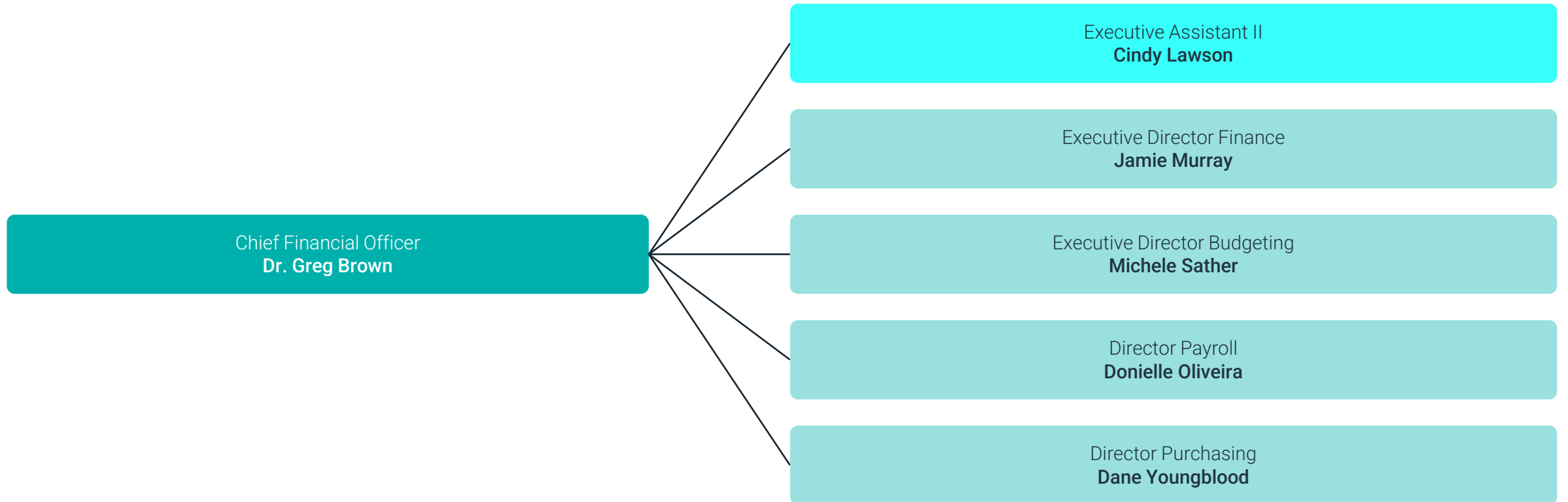
Director of Fine Arts  
**Melissa Wolf**

Fine Arts Specialist  
**Simon Davis**

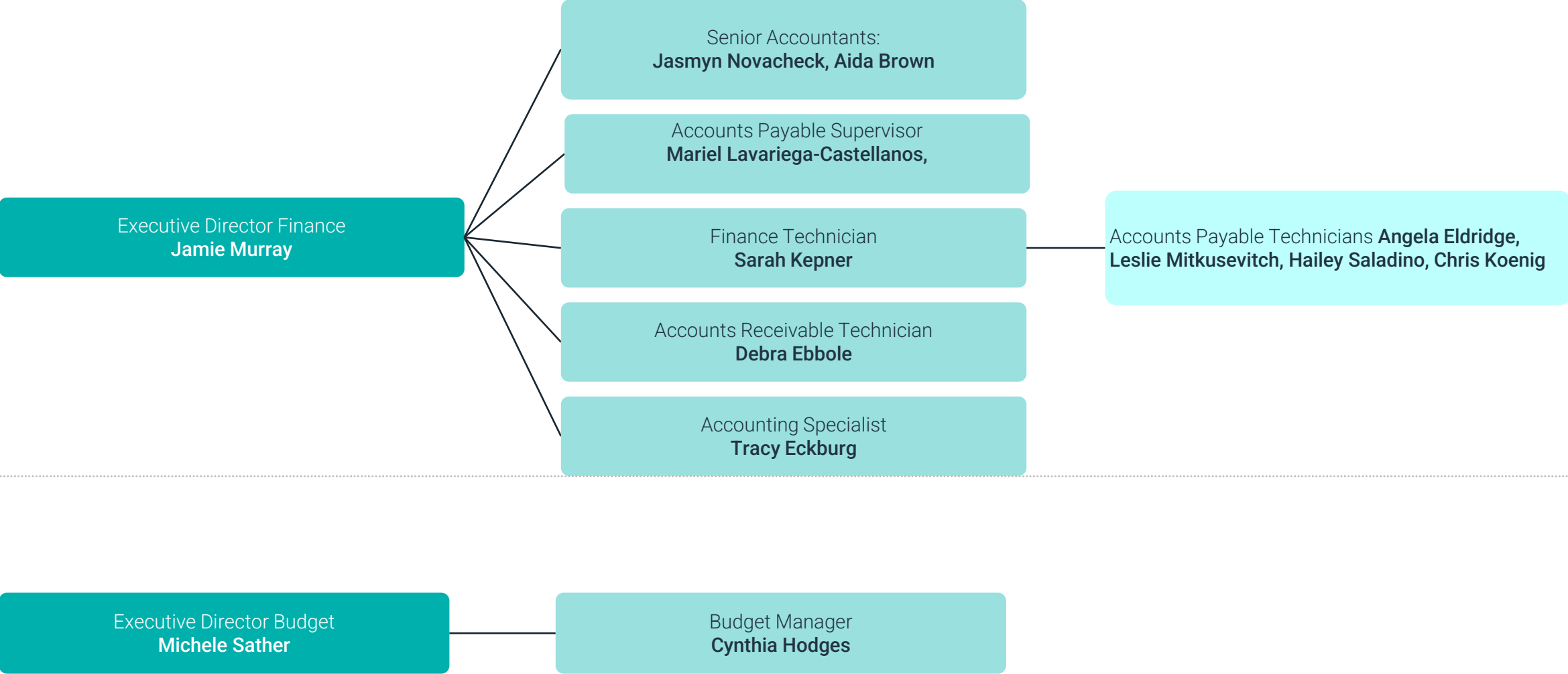
# Diversity, Equity & Inclusion: Department Overview



# Finance: Director Overview



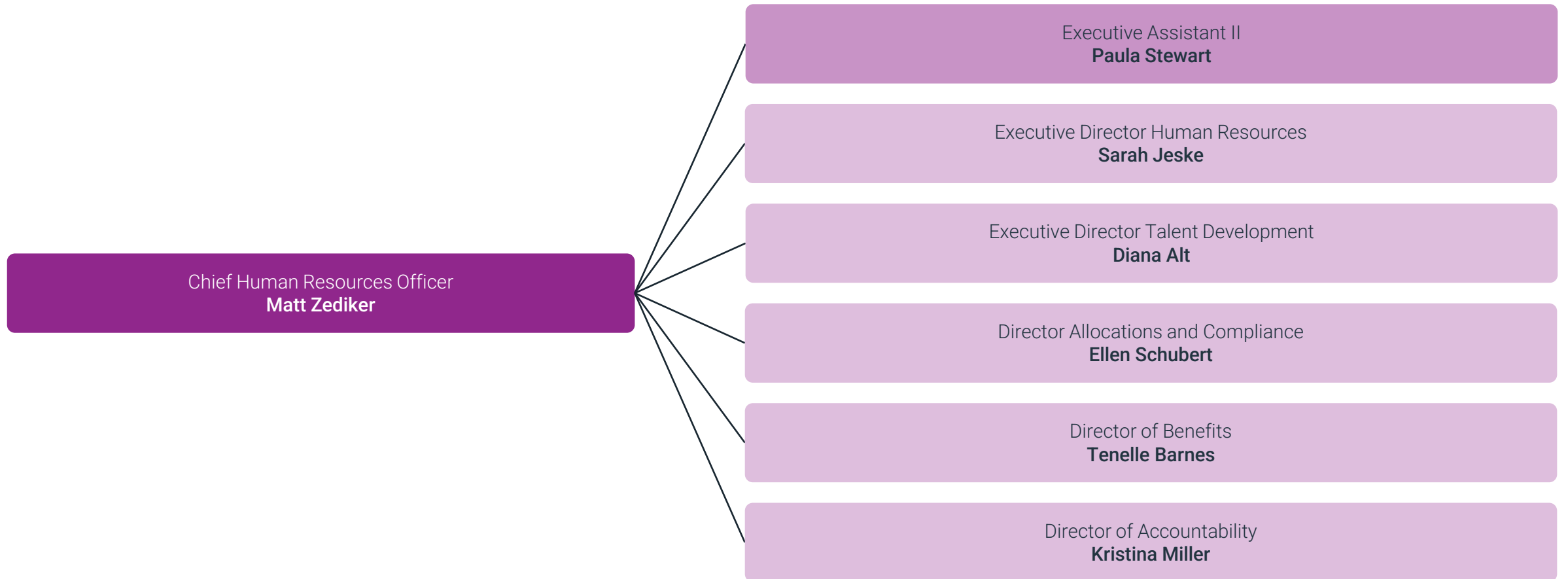
# Finance & Budget



# Payroll & Purchasing



# Human Resources: Director Overview

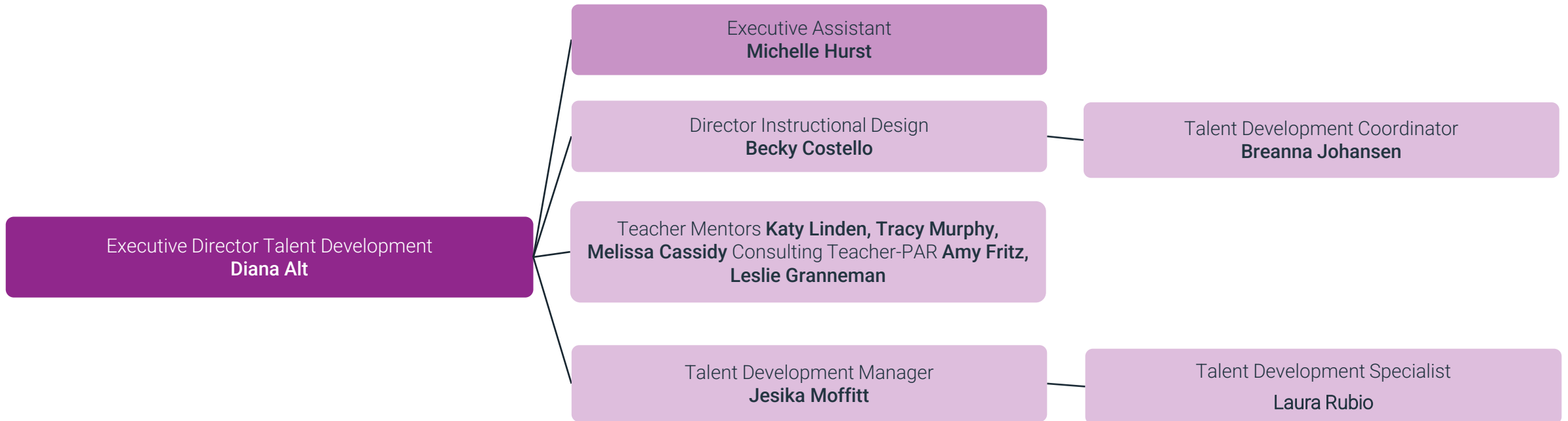


# Human Resources

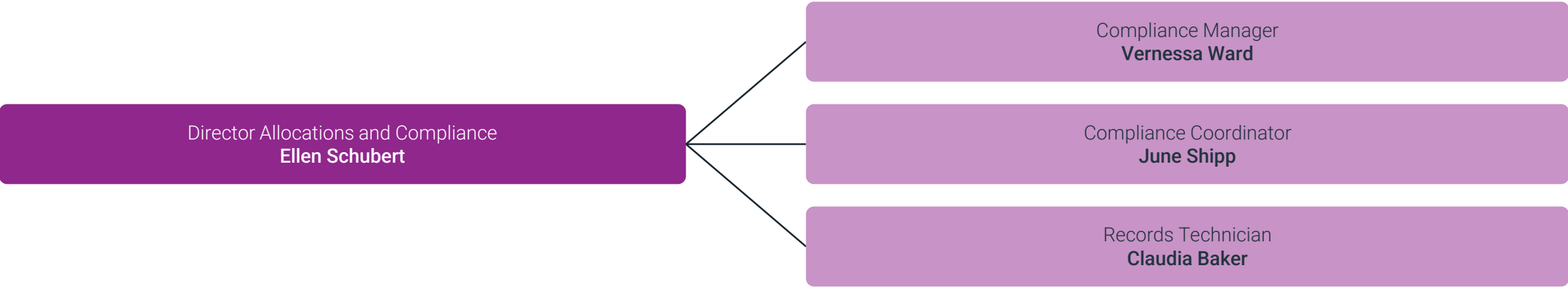




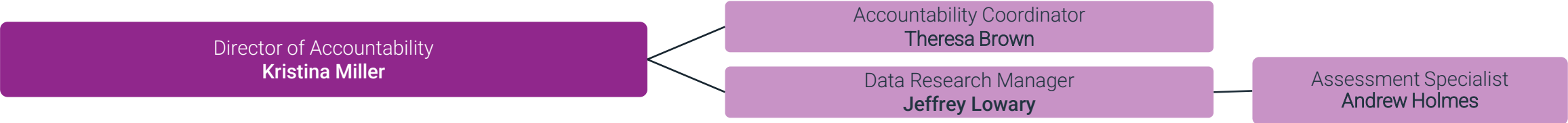
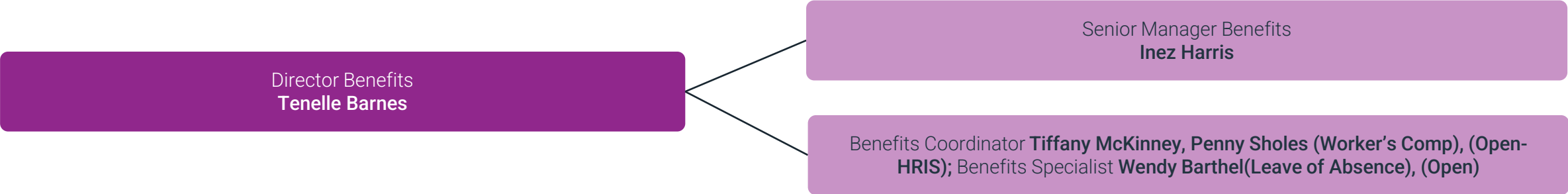
# Human Resources: Talent Development



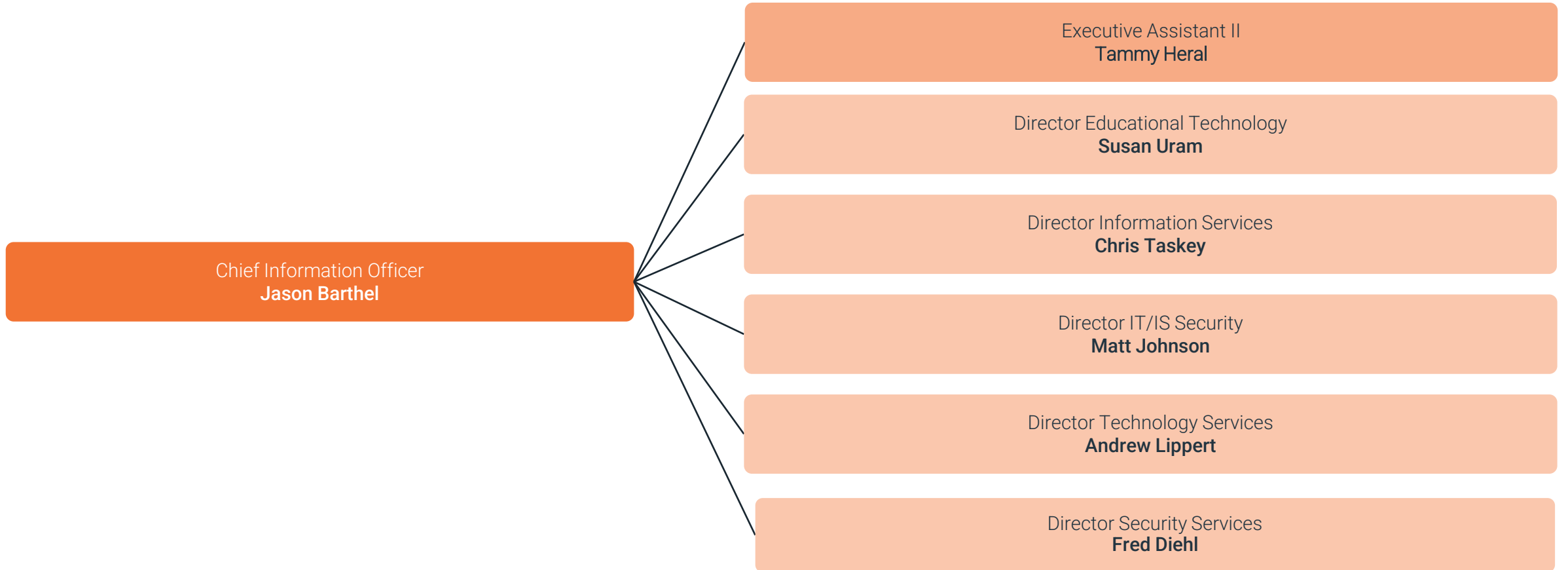
# Human Resources: Allocations and Compliance



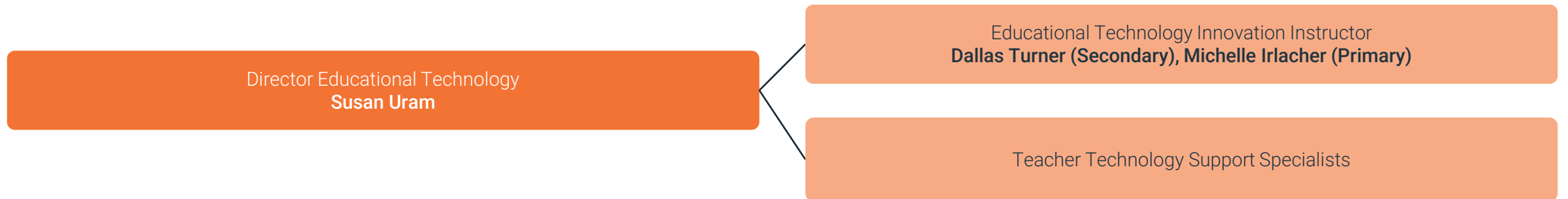
# Human Resources: Benefits & Accountability



# Information & Technology: Director Overview



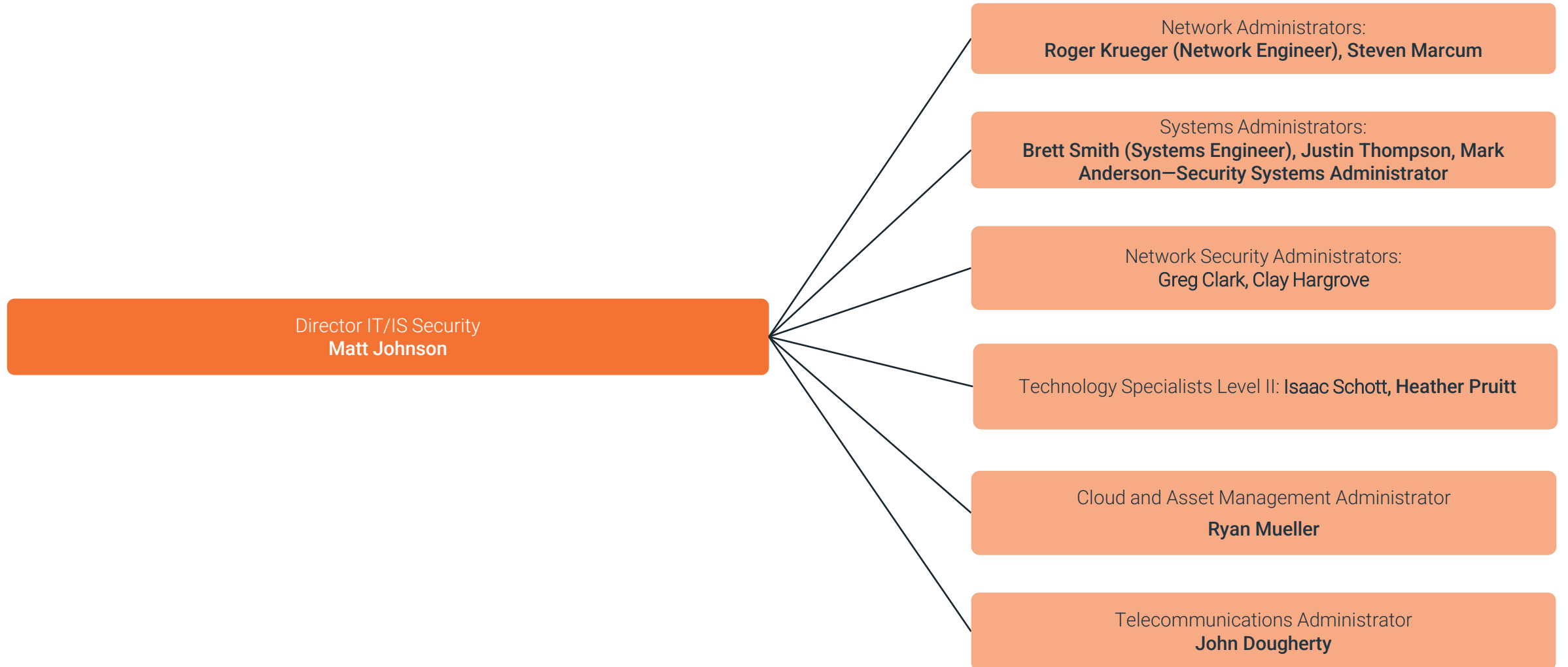
# Information & Technology: Educational Technology



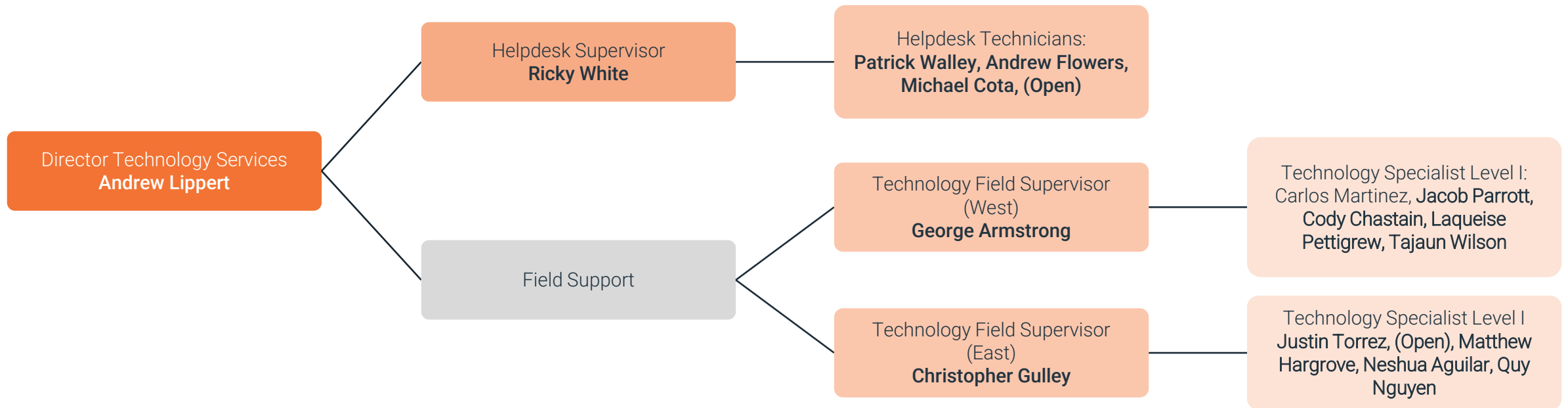
# Information & Technology: Information Services



# Information & Technology: IT/IS Security

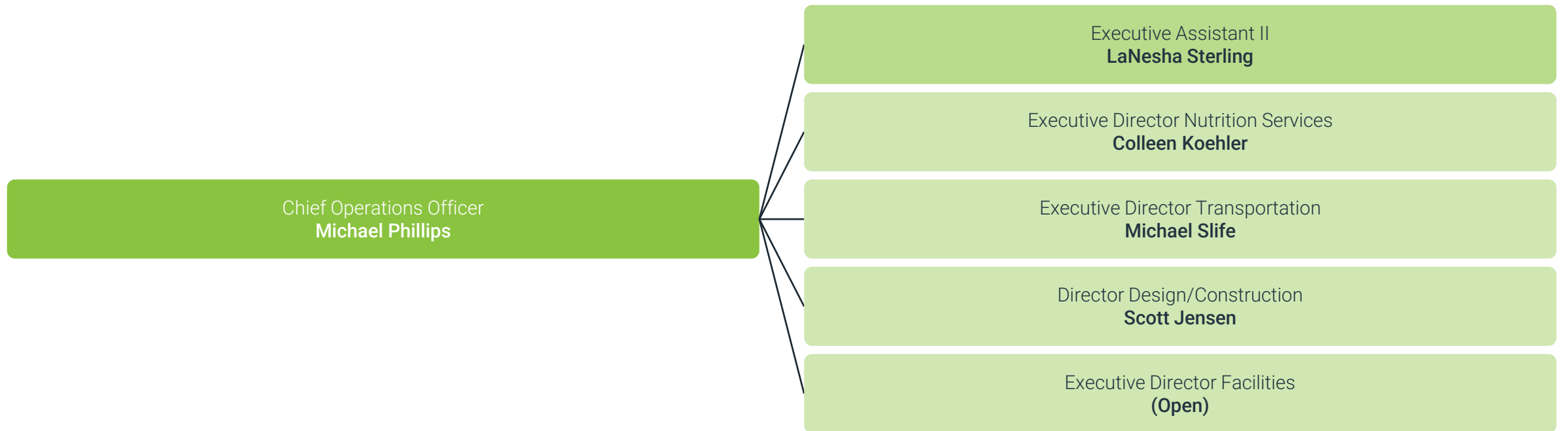


# Information & Technology: Technology Services





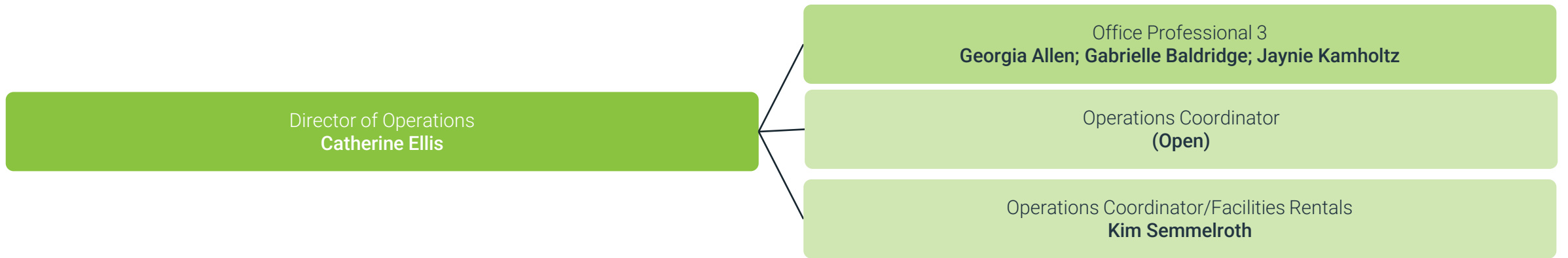
# Operations: Director Overview



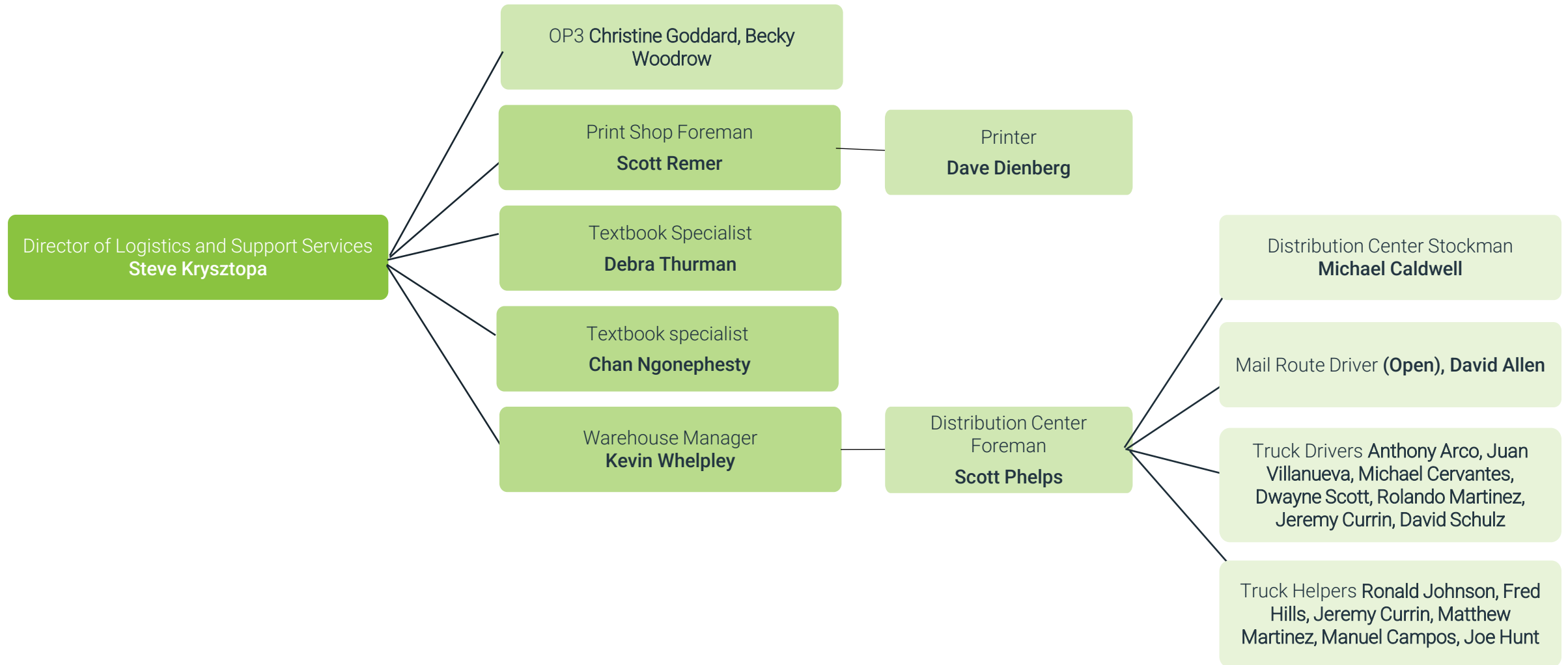
# Operations: Facilities



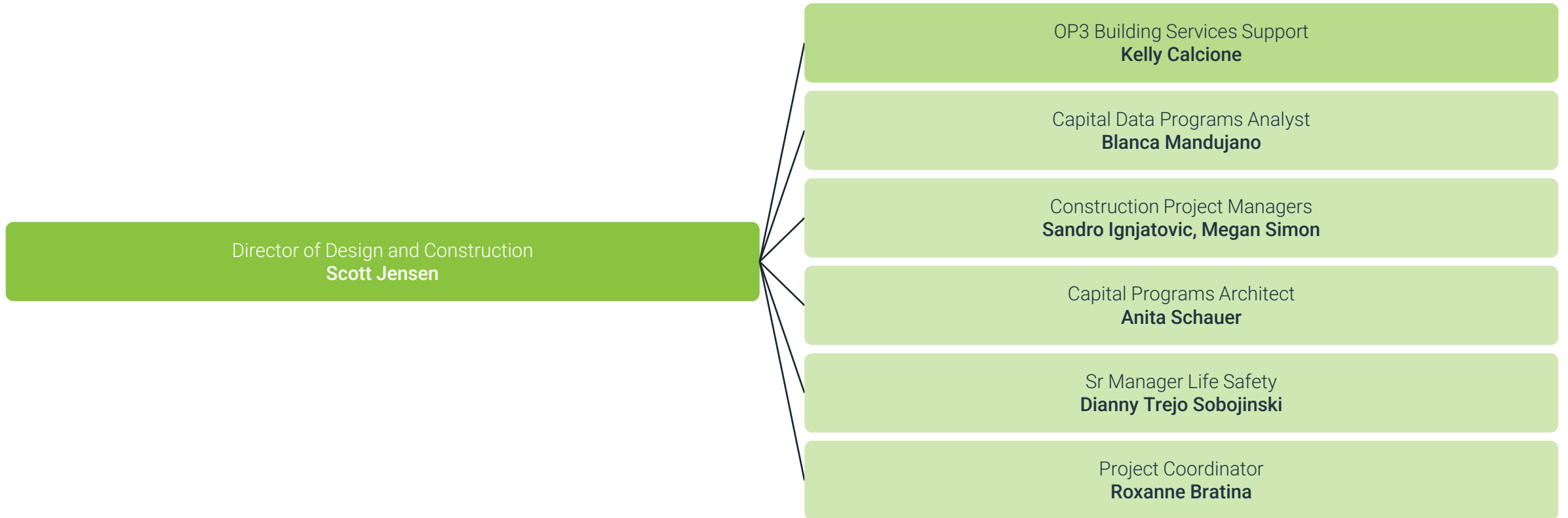
# Operations



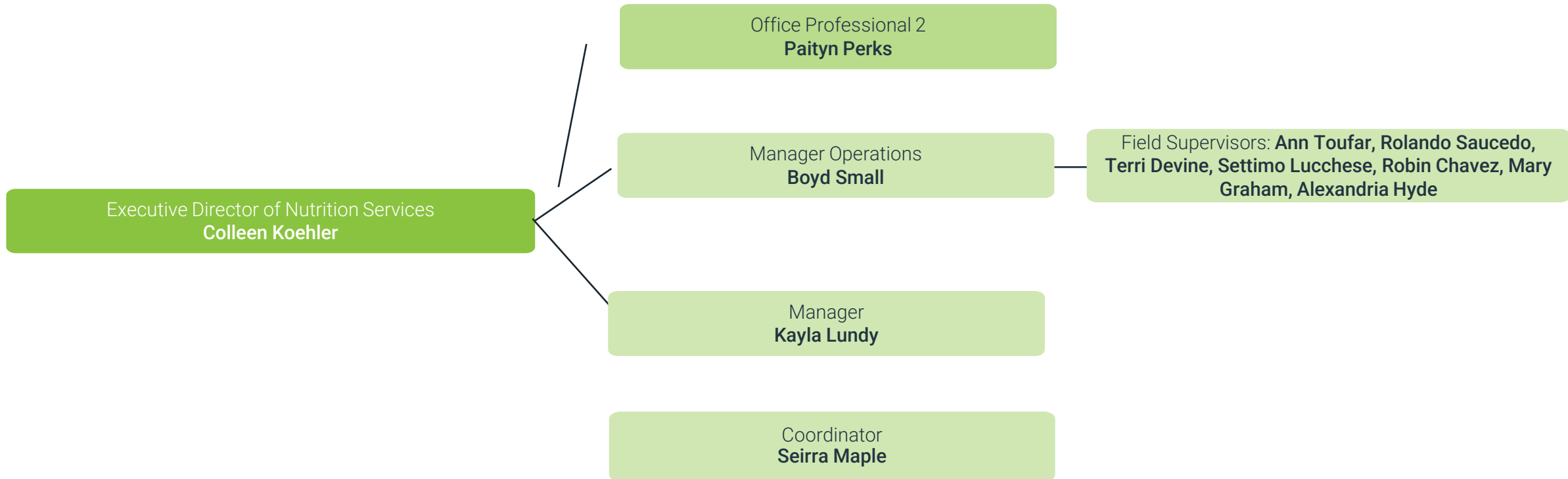
# Operations: Logistics and Support Services



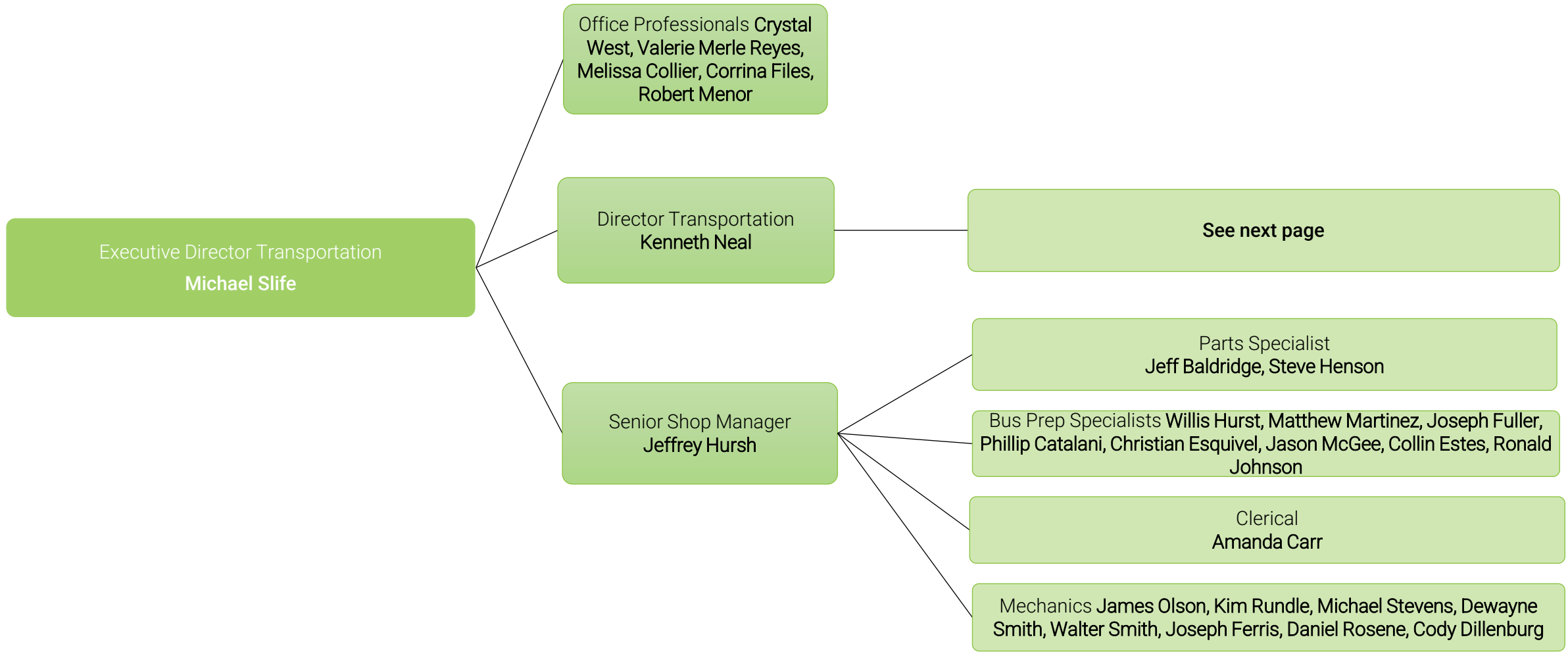
# Operations: Design & Construction



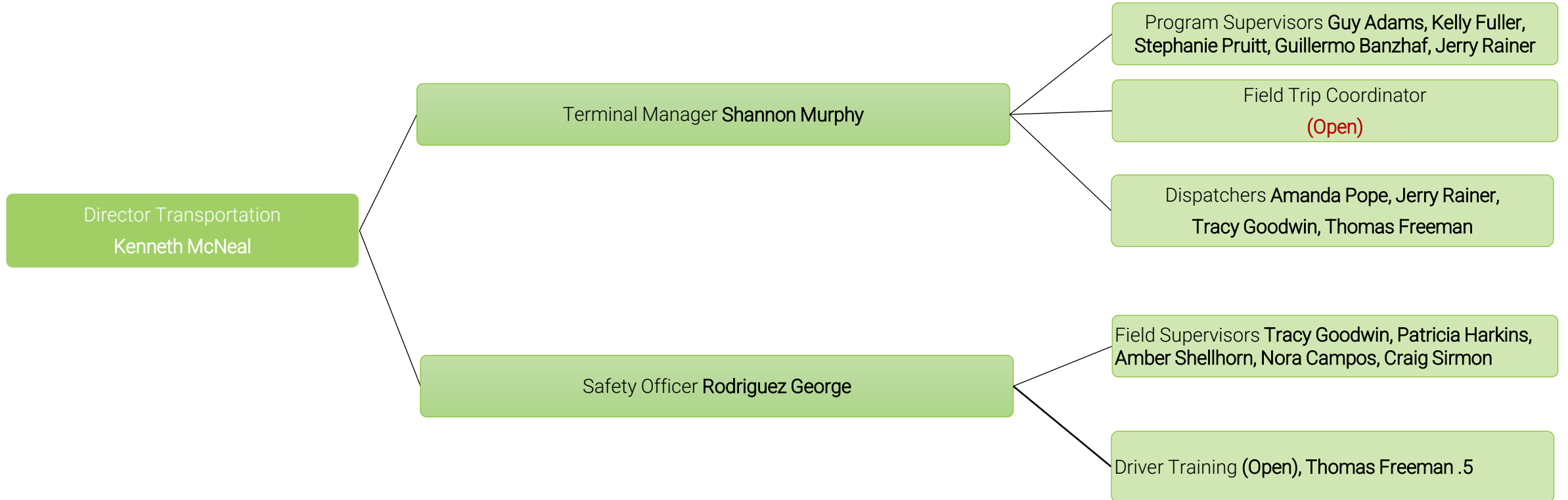
# Operations: Nutrition Services



# Operations: Transportation

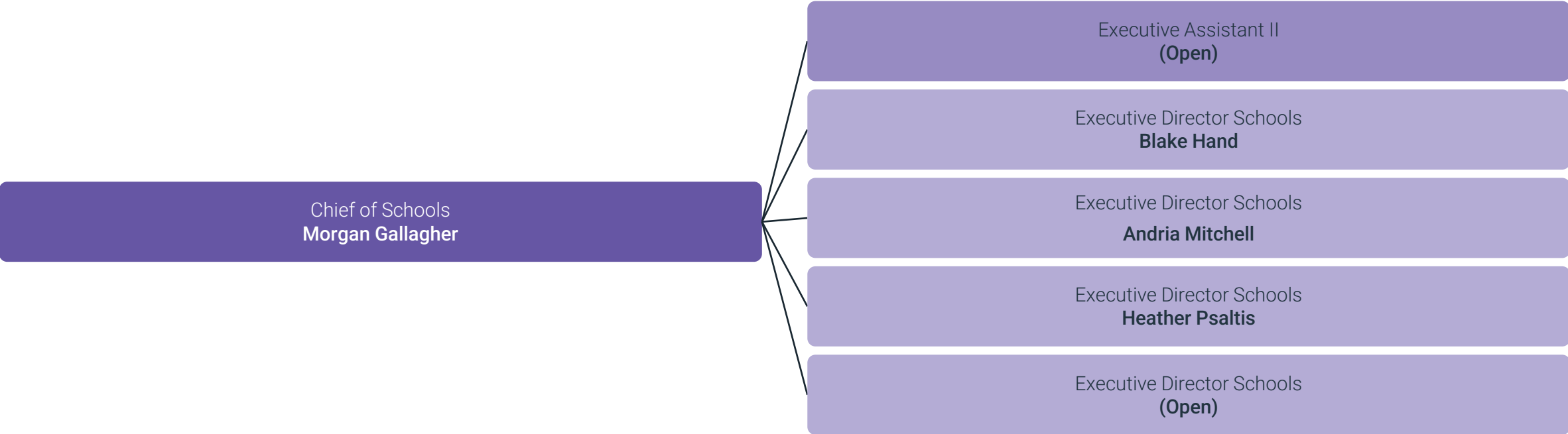


# Operations: Transportation

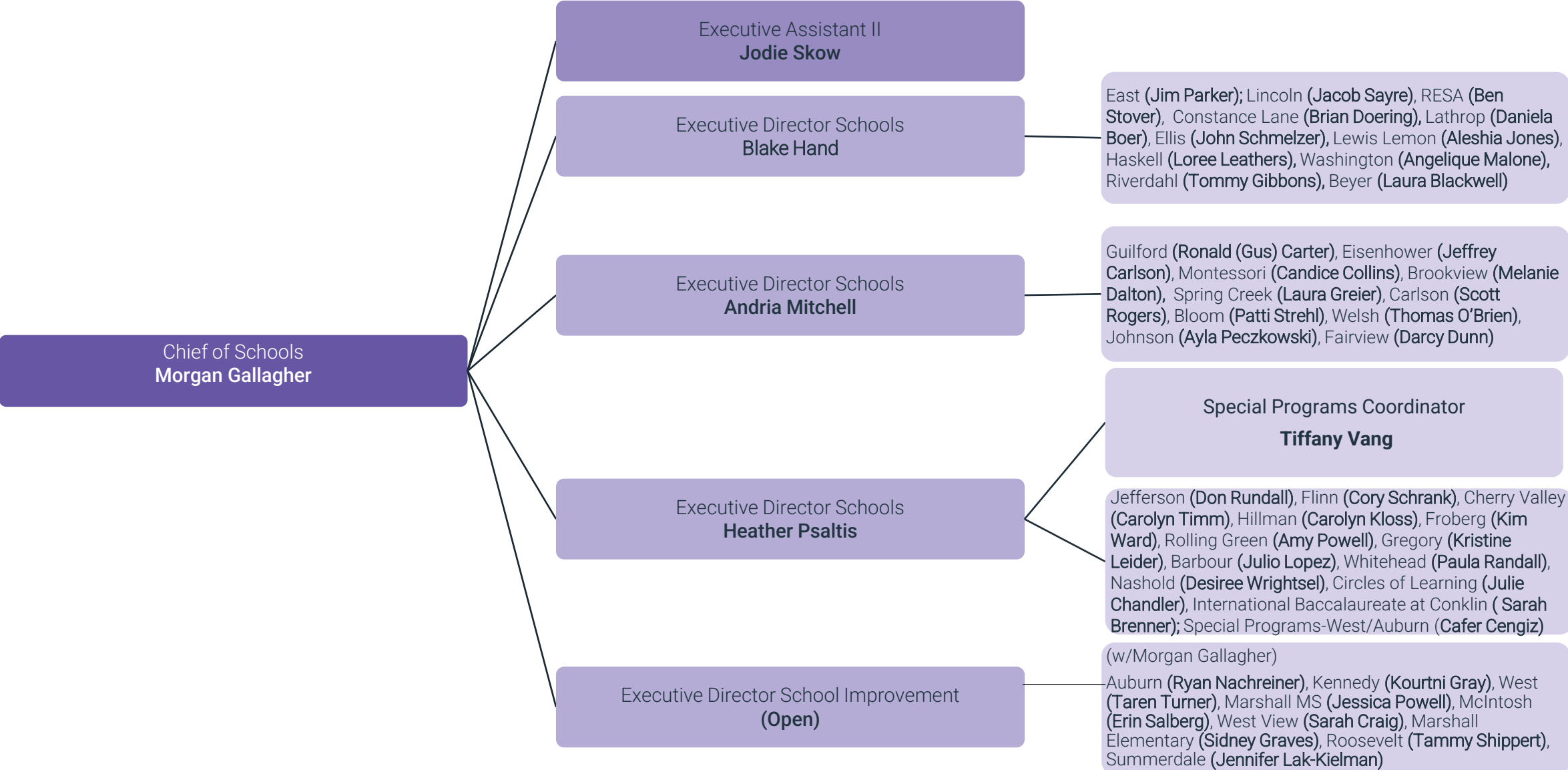




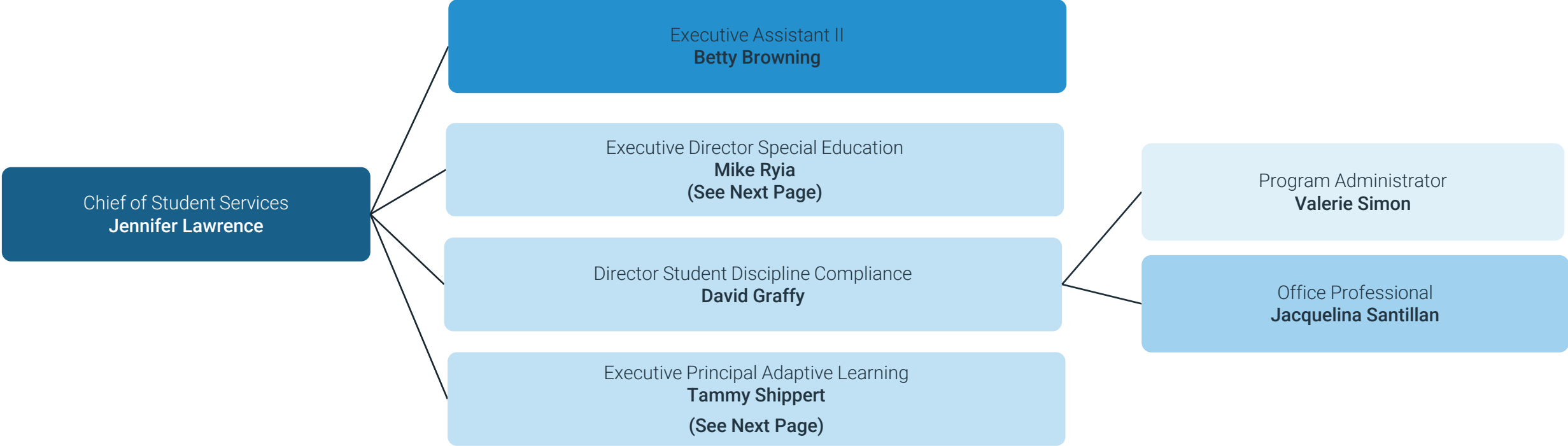
# Schools Team: Director Overview



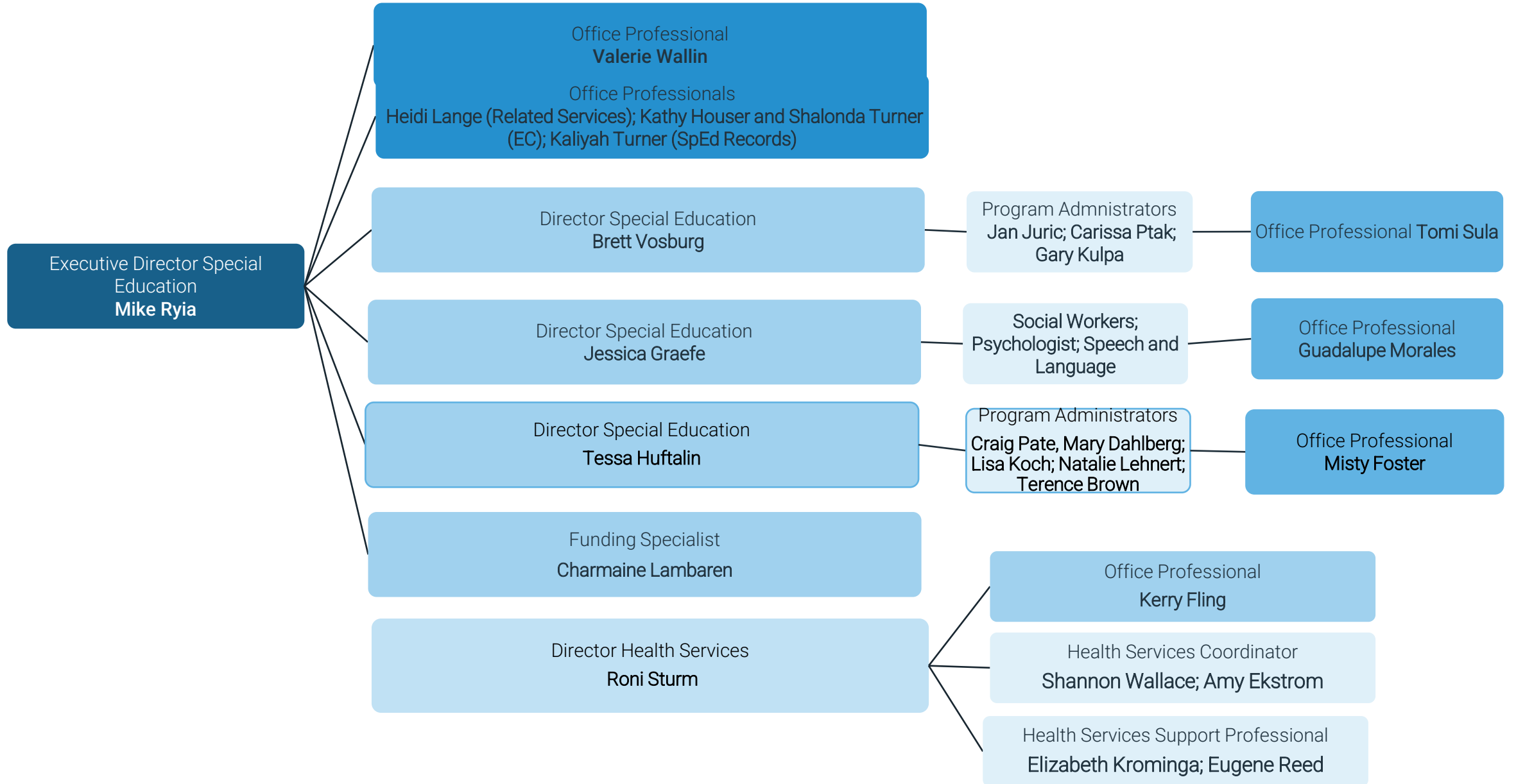
# Schools Team: School Breakdowns



# Student Services: Director Overview



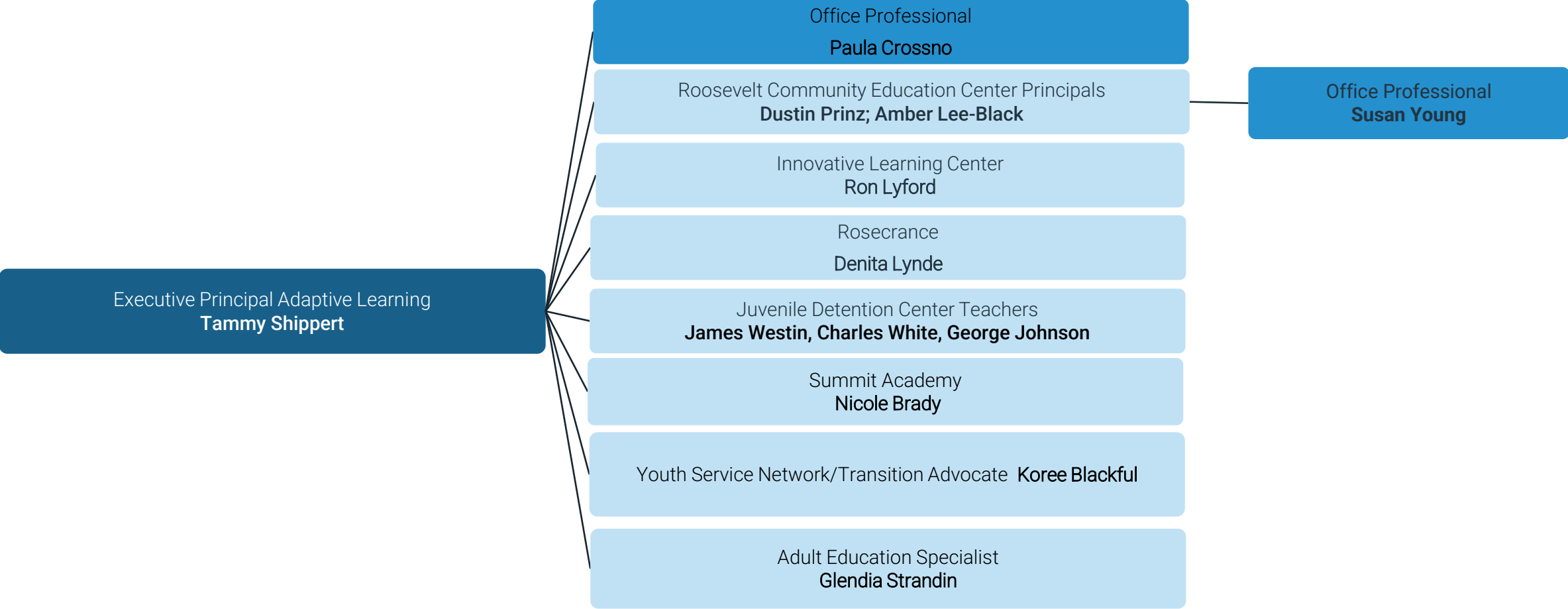
# Student Services: Special Education



# Student Services: Student Discipline Compliance



# Student Services: Adaptive Learning



# Legal: Department Overview

