

The background image shows the exterior of Kirkland Middle School (KiMS) at dusk. The building features a prominent curved section with blue vertical siding and large windows that are illuminated from within, showing interior spaces like a library. To the left, a portion of a building with grey stone masonry is visible. In the foreground, there are some red-leafed plants and a paved area. A semi-transparent white rectangular box with a thin white border is centered over the image, containing the text.

**Welcome to  
Kirkland Middle  
School (KiMS)!**



# HELLO & WELCOME

## Administrative Team



**Niki Cassaro,**  
Principal



**Katie Chaubal,**  
Associate Principal



**Ashley Rowe,**  
Dean of Students



## Counseling Team



**Jordan White,**  
Counselor, A - Kt



**Maddie Rogers,**  
Counselor, Ku - Z



**Karter Perkins,**  
Registrar



# HELLO & WELCOME

## Additional KiMS Staff



**Katie Adams,**  
Athletic Director &  
6th Science Teacher



**Darioush Mansourzadeh,**  
Activities Director &  
6th LA/SS Teacher



**Liz Haggerty,**  
Librarian



## ASB Board Members



Rumi Nurani, Kate Reynolds, Vien Pogue, Laura Souza  
Jonathan Yang, Ilyan Kurji, Olivia Lee

Coming together as one!



PETER KIRK Elementary – Home of the Eagles



LAKEVIEW Elementary – Home of the Leopards



MARK TWAIN Elementary – Home of the Bobcats







*Proud  
to be a*  
**PANTHER**



Let's take a look  
at a day in the  
life at KiMS

- Schedule
- Student Experiences
- House System
- Panther Way



## What does the day look like at KiMS?

Note: It's possible there might be a third lunch next year due to school size.

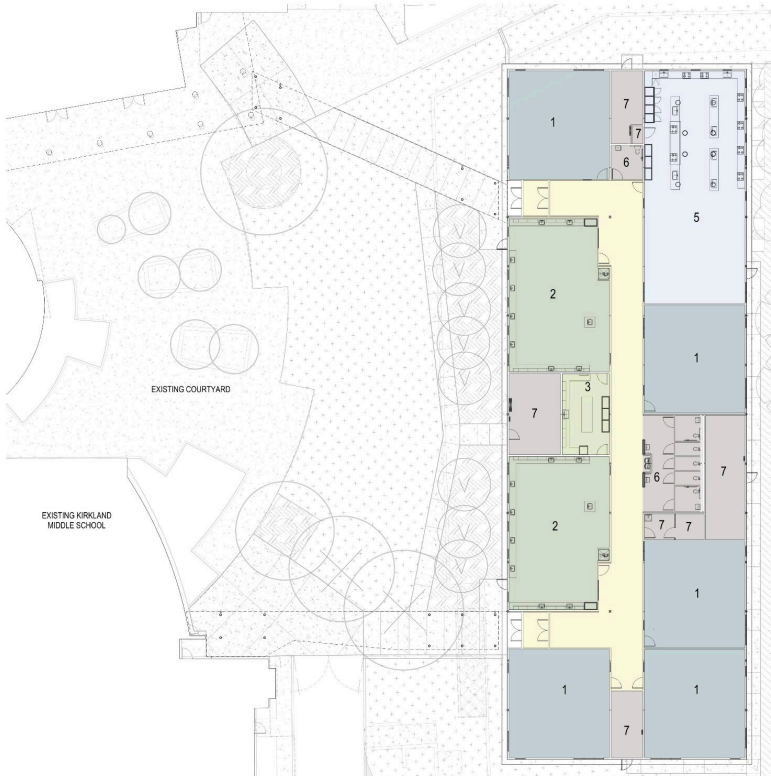
## DAILY SCHEDULE

1st Period	7:50	-	8:40
2nd Period	8:45	-	9:35
PT/AP	9:40	-	10:10
3rd Period	10:15	-	11:05
"A" Lunch	11:05	-	11:35
"A" 4th Period	11:40	-	12:30
"B" 4th Period	11:10	-	12:00
"B" Lunch	12:00	-	12:30
5th Period	12:35	-	1:25
6th Period	1:30	-	2:20



Program Spaces

- 1. Classroom
- 2. Science Classroom
- 3. Science Prep
- 5. Food Program Classroom
- 6. Restrooms
- 7. Building Support





# Life at KiMS

Let's hear from **Rumi** and **Vien**, two of our ASB Representatives, about what a typical day looks like at KiMS!

## **Highlights:**

- 6 class periods
- PT/AP period
- Extracurricular opportunities
- House Meetings
- Reward Days





# The Panther Way

KIND  RESPONSIBLE  RESPECTFUL



Let's hear from **Ilyan** about the Panther Way here at KiMS!

- Clear expectations around being kind, respectful, and responsible in each school environment
- Supports a welcoming and inclusive environment
- No guessing about expectations
- Reward Day Information

# KiMS House System

Let's hear from **Kate** about Houses at KiMS.

We have a super cool House system (think Harry Potter or Divergent). We implemented the House system to:

- Promote positive peer-to-peer relationships
- Create a sense of belonging for each student
- Foster a sense of community among peers & school staff
- Teach students how to engage in healthy competition (we have LOTS of House competitions & prizes!!!!)





*Proud*

*to be a*

**PANTHER**

Let's take a look at what a 6<sup>th</sup> grader will experience at KiMS.

- Academics
- Extracurriculars



# YOUR 6TH GRADE ELECTIVE OPTIONS - PICK ONE!

## OPTION 1:

### PANTHER ACADEMY QUEUE (PA-Q)

4 classes, lasting  
10 weeks in length  
*(switching each  
quarter)*

- Q - Foods
- Q - Art
- Q - STEM
- Q - Leadership

## OPTION 2:

### MUSIC

A year-long  
music class

- Choir
- Orchestra
- Band

## OPTION 3:

### DIGITAL MUSIC + PANTHER ACADEMY QUEUE

1 semester of Digital Music  
Production &  
2 terms of Panther  
Academy classes

## OPTION 4:

### GUITAR + PANTHER ACADEMY QUEUE

1 semester of Guitar &  
2 Panther Academy  
classes



# Sample Schedule: Panther Academy (PA)

Period	Semester 1		Semester 2	
1	Math		Math	
2	Science		Science	
3	PE/Health		PE/Health	
4	English		English	
5	Social Studies		Social Studies	
6	<b>TERM 1:</b> <b>Art</b>	<b>TERM 2:</b> <b>Foods</b>	<b>TERM 3:</b> <b>CTE</b>	<b>TERM 4:</b> <b>Leadership</b>

4 terms of PA (*two classes per semester*)



# Sample Schedule: Music

Period	Semester 1	Semester 2
1	Math	Math
2	Science	Science
3	PE/Health	PE/Health
4	English	English
5	Social Studies	Social Studies
6	<b>Music (Band, Choir or Orchestra)</b>	<b>Music (Band, Choir or Orchestra)</b>

2 semesters worth of music (*yearlong class*)



## Sample Schedule:

### Guitar OR Digital Music + 2 PA classes

Period	Semester 1		Semester 2
1	Math		Math
2	Science		Science
3	PE/Health		PE/Health
4	English		English
5	Social Studies		Social Studies
6	<b>TERM 1:</b> Art	<b>TERM 2:</b> Foods	<b>Guitar OR Digital Music Production</b>

1 semester of Guitar or Digital Music and 2 terms of PA



# ARE THERE AFTER SCHOOL SPORTS?

Let's hear from **Laura & Ilyan** about our sports programs at KiMS.

## **Season 1 | Sept. 11 - Oct. 27**

- Basketball - Boys
- Cross Country - Co-Ed
- Tennis - Boys

## **Season 2 | Oct. 30 - Dec. 15**

- Badminton - Girls
- Soccer - Co-Ed

## **Intramurals - Three Sessions**

### **• Session 1: Jan. 8 - 19**

Co-Ed Badminton/Pickleball

### **• Session 2: Jan. 22 - Feb. 2**

Co-Ed Volleyball

### **• Session 3: Mar. 25 - Apr. 5**

Co-Ed Outdoor Sports

## **Season 3 | Feb. 5 - Mar. 22**

- Basketball - Girls
- Wrestling - Co-Ed

## **Season 4 | Apr. 22 - Jun. 7**

- Tennis - Girls
- Track - Co-Ed
- Volleyball - Girls

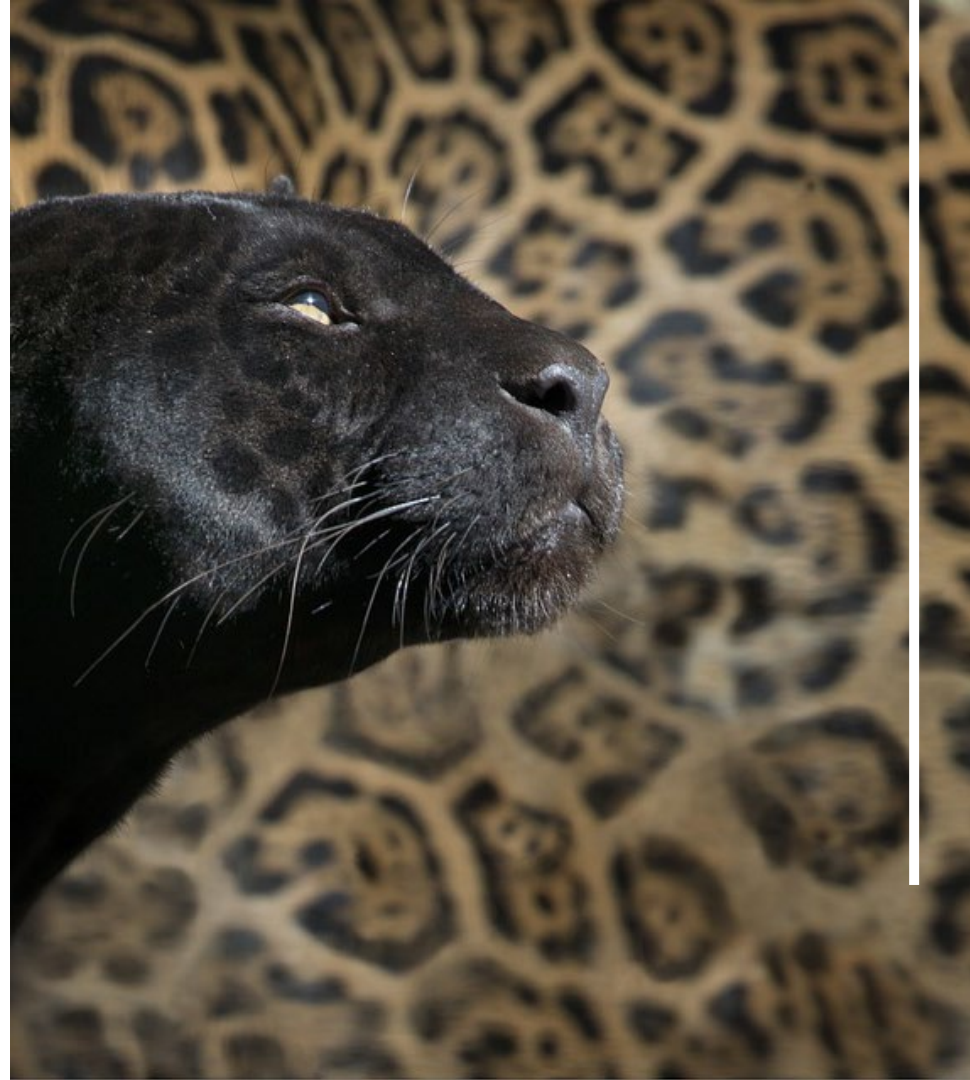




# Clubs & Extracurricular Activities

Let's hear from some of our **ASB board** about a few of the clubs & interest groups at KiMS.

- Battle of the Books & Pages for Pancakes
- Builder's Club
- Dungeons & Dragons Club
- Gay-Straight Alliance (GSA)
- Green Team
- National Junior Honor Society
- Panther Partners
- Panther Playhouse
- Technology Student Association
- Yearbook



A close-up profile of a black panther's head, looking towards the left. The panther has yellow eyes and is set against a plain white background.

# *Proud* *to be a* **PANTHER**

Let's take a look  
at what's coming  
up

- 🐾 Registration
- 🐾 Preparing for Fall
- 🐾 PTSA
- 🐾 FAQs

# Registering for 6th Grade Classes

The Course Catalog is available on the KiMS website.

When signing up for Music classes:

- No prior experience is necessary!
- We have instrument rentals available
- We have financial aid available to help with music fees

Elective Request Survey Form will be emailed to parent(s)/guardian(s) tonight.

Please complete this survey together with your student.

ALL SURVEYS MUST BE SUBMITTED ONLINE BY JANUARY 26, 2024



## KIRKLAND MIDDLE SCHOOL 6TH GRADE ELECTIVE REFERENCE SHEET 2024-2025 SCHOOL YEAR

Welcome to Kirkland Middle School (KiMS)!

You will use the information included on this form to complete a Microsoft Forms survey to indicate what elective your student(s) will take in Grade 6. The Microsoft Forms survey will be emailed out to parents/guardians on Tuesday, January 16<sup>th</sup>, 2024 immediately following our Future Panther Family Night. This document does not get submitted; it is just for your reference.

Your student will take the following required classes, all of which last an entire school year, in Grade 6.

English 6  
Science 6

Social Studies 6  
Fitness & Health

Math 6+  
Elective Options\*

### Elective Options:

6<sup>th</sup> grade students have the option to take a year-long music class, the year-long Panther Academy queue (PA-Q), or a combination of semester long music classes and Panther Academy classes. Kirkland Middle School's music program offers year-long Concert Choir, Concert Band, Orchestra and semester-long Guitar and Digital Music Production. The Panther Academy queue, each class one quarter in duration, includes Foods, Leadership, Art, and STEM. The Panther Academy queue allows students to explore a new elective each quarter designed to support students' academic success.

Please determine which of the below options your student(s) would like to take:

### YOU WILL CHOOSE ONE ELECTIVE OPTION\*:

OPTION 1 Panther Academy Queue (PA-Q)	OPTION 2 Music	OPTION 3 Digital Music + Panther Academy Queue	OPTION 4 Guitar + Panther Academy Queue (PA-Q)
4 classes lasting 10 weeks in length (1 quarter each class) switching at the quarter change <ul style="list-style-type: none"><li>• Q Foods</li><li>• Q Art</li><li>• Q STEM</li><li>• Q Leadership</li></ul>	A year-long music class (no experience required) <ul style="list-style-type: none"><li>• Choir</li><li>• Orchestra</li><li>• Band</li></ul>	1 Semester (2 quarters) of Digital Music Production (DMP) + 2 Panther Academy Queue Classes  *Students will be auto-enrolled in the PA-Q. Specific PA-Q classes cannot be selected.	1 Semester of Guitar + 2 Panther Academy Queue Classes  *Students will be auto-enrolled in the PA-Q. Specific PA-Q classes cannot be selected.

KiMS students who are currently enrolled in Concert Band have the opportunity to audition for Jazz Band. This class meets before school; district transportation is not provided. Students enrolled in Jazz Band must also be enrolled in Concert Band.

As a reminder, a Microsoft Forms survey will be emailed out to parents/guardians the evening of Tuesday, January 16<sup>th</sup> (following our Future Panther Family Night). Please use that form to indicate your student's elective preference.

SURVEYS MUST BE SUBMITTED NO LATER THAN FRIDAY, JANUARY 26<sup>TH</sup>, 2024!



## Preparing for the Fall

- Laptops & Planners provided for every student
- Cell Phone Free School – “Off and Away All Day”
- No lockers – students carry bags
- Uniforms required for PE (sold by KiMS) + PE lockers
- Lunch purchased with ID card or Student ID Number
- You will receive communication over the summer about the first day of school!





- © Less of a time commitment than in elementary school
- © Get involved
  - We need you!
  - Your kids need you!



*Proud*

*to be a*

**PANTHER**

Now, you can take  
a look around KiMS

- 🐾 Tour the school
- 🐾 Meet some staff  
and current  
students
- 🐾 Meet other  
incoming 6<sup>th</sup>  
graders