

WMS Paw Print 2024.01.12

Bringing you the middle school scoop...

Principal's Message

January 12, 2024

Today I met with each grade separately to review important topics and set up students for success for the second half of the year. I talked about reflecting and growing, setting goals and a positive school environment. Students had some great feedback and we ask you to highlight and amplify their voice in your conversations at home.



When asked to think about something positive they did to make the school a good environment for everyone. Many students shared times when they helped others. They shared things like helping others in class with academics and helping students when social situations were tough.

The most poignant feedback came from students who contributed positively by including others. Several students shared that they have invited students to join their group in class or at lunch and recess. I encourage all families to talk about how we can be more inclusive by thinking about how it feels to be left out and the benefits of including all. As I say to 8th Grade Students and Families, by the end of 8th Grade the students always seem to come together as one.

Students also shared examples of when they were resilient, particularly not only bouncing back, but growing as a result of challenges. There was no shortage of examples of growing after struggling on a test or quiz. I was proud of students who shared the times they bounced back from difficult social situations.

Most importantly, I am appreciative of how receptive each grade was. Let's all continue to reflect and stay positive for the rest of the year. Below are some connections to today's assemblies and our PTA Book Study and other things going on in the school.

KEEP THE PAW PRINT BOOKMARKED!

Once you have access to the newsletter the link will update automatically, so go back at any time to see the latest version.

CLICK HERE: Older Versions Of The Paw Print Are Archived On Our Webpage

A glance at the upcoming week...

Week of 1/15-1/19

Monday - School is Closed for Martin Luther King Jr. Day

Tuesday - Day E

- 2:15-3:15 pm: Peer Tutoring (Chess)
- 2:30-3:30 pm: Crew Meeting Elf Jr.
- 2:30-6:00 pm: Elf Jr. Rehearsal Green Cast
- 2:45-4:00 pm: Science Olympiad

Wednesday - Day F

- 2:15-3:15 pm: Peer Tutoring (ELA)
- 2:20-3:20 pm: Environmental Club
- 2:45-4:00 pm: Science Olympiad
- 3:00-6:00 pm: Elf Jr. Rehearsal Red Cast

Thursday - Day A

- 2:15-3:15 pm: Peer Tutoring (Social Studies)
- 2:30-3:15 pm: Yearbook Meeting
- 2:30-3:30 pm: Crew Meeting Elf Jr.
- 3:00-6:00 pm: Elf Jr. Rehearsal Green Cast

Friday - Day B

- 3:00-6:00 pm: Elf Jr. Rehearsal Red Cast

Upcoming Dates:

- January 17-19th: Winter STAR Assessment
- January 25-28th: WMS Musical Elf Jr.

Weekly
Bulletin

Ticket Link: <http://www.showtix4u.com/events/WMSElfJr>

Important New Information, Upcoming Events, and Reminders

PTA Book Study

At our most recent meeting we discussed resilience and agency. When students have the opportunity to shape their environment positively and there are long term positive effect for them. This is a significant part of what our Community Leadership Project and Principal's Leadership Group does. Students volunteer their time and energy to make our school better. "Kids who volunteer gain perspective, find purpose, and get to experience the ripple effects of their actions. Doing work that makes kids feel good can boost self-esteem."



Mt. Pleasant Recreation Department

Mt. Pleasant Recreation Department is planning a trip to The Cave. See the flyer for details.



January 30th at 7:00 p.m. - WMS Incoming 8th Course Selection Parent Meeting

We will be hosting a meeting on January 30th at 7:00 p.m. in the WMS Cafeteria to share information about Mathematics and Science courses available in 8th Grade. Students will receive information in school prior to this meeting and we will share additional information in the coming weeks.



Course Selections for 7th Grade 2024 - 2025 School Year

6th Grade Students and parents will receive information about course selections for next year at the end of February. This includes Music and Language Courses. We encourage students to take an active role in course selections as they prepare for more diverse selections in high school and college.



Our Language Teachers will be guiding students in making a selection. Students should be thinking about what language and culture motivates them to want to learn another language. Selections should be based on interest. All languages are difficult to learn so motivation and interest should be factors in the decision.

Principal's Leadership Group - Snapshots of What's Happening

8th Grade Community Leadership Project - CLP

Our 8th Graders spent the first half of the year developing ideas for projects, researching careers, and making connections between the two. Now the fun begins. Students are putting their ideas into action. Some students are creating program cards with students' jersey numbers decided to help make life easier when they come to watch a game. We'll have more to share as the projects unfold.



Star Assessments - Incentives from Our Principal's Leadership Group - PLG

Students will be taking the winter Reading and Math benchmarks. We encourage students to try their hardest to show us how much they have grown. The PLG met this week to decide on some incentives for students who have the most growth, with an emphasis on the fact that no matter where we start, we all can grow. They will help find fun ways to celebrate the students with the most growth.



What's Happening in The Math Lab?

Our 6th grade students have been learning about Ratios and Rates in their classrooms! During our Math Lab sessions this week, our mathematicians have been collaborating to find the answers to challenging multi-step problems. Their tenacity to succeed is commendable!


Our 7th graders have been working hard to write multi-step equations from word problems in their classrooms. During our sessions together, the students are using their problem solving skills in order to find solutions to more challenging types of



problems. These problems involve multi "let statements" as well as solving equations with variables on both sides.

It takes collaboration and resilience to make it through some "uncomfortable" math challenges.

Save The Dates



THE CAVE

Located in Bethel, CT

For Grades 6, 7, and 8


FEBRUARY 21st

Join us for mini-golf, laser tag, ropes course, bumper cars! Each participant will receive a \$10 game card!

The bus will leave the Mt. Pleasant Community Center at 10am and return at 4pm

Resident Fee: \$60
Non Resident Fee: \$72
Activity #: 911234 A

Scan to register!



Register with the Mt. Pleasant Recreation Department!

Made with PosterMyWall.com



Registration is now open for the following:

Tee-Ball 5 & 6 (Co-Ed)

Baseball AA/AAA 7 & 8

Minors Baseball 9 & 10

Majors Baseball 11 & 12

Softball 8U, 10U & 12U

Please visit Shermanparkll.com to register

Early Bird discount ends 1/15/24

Registration closes 2/24/24

Westlake Middle School

CLASS OF
2024

Save the Date

8th Grade Moving Up Dance

Sponsored by the WMS PTA

Club Infinity

404 Irvington Street
Pleasantville

June 25th

7:00-10:00

Full Buffet Dinner

&

DJ



Westlake Wildcat Sports

Please check the Westlake Wildcats Sports Calendar for ANY updates or changes.

CALENDAR: <http://www.westlakewildcats.org/calendar>

Athletic Office contacts:

Shawn Baumann, Athletic Director at sbaumann@mtplcsd.org

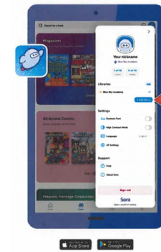
Maria DiNota, Athletic Secretary at mdinota@mtplcsd.org



Sora Access

Keep reading! Sora is a digital reading option that all students have. Students can access Sora through Classlink or by following these instructions. Thank you Ms. Rotanelli.

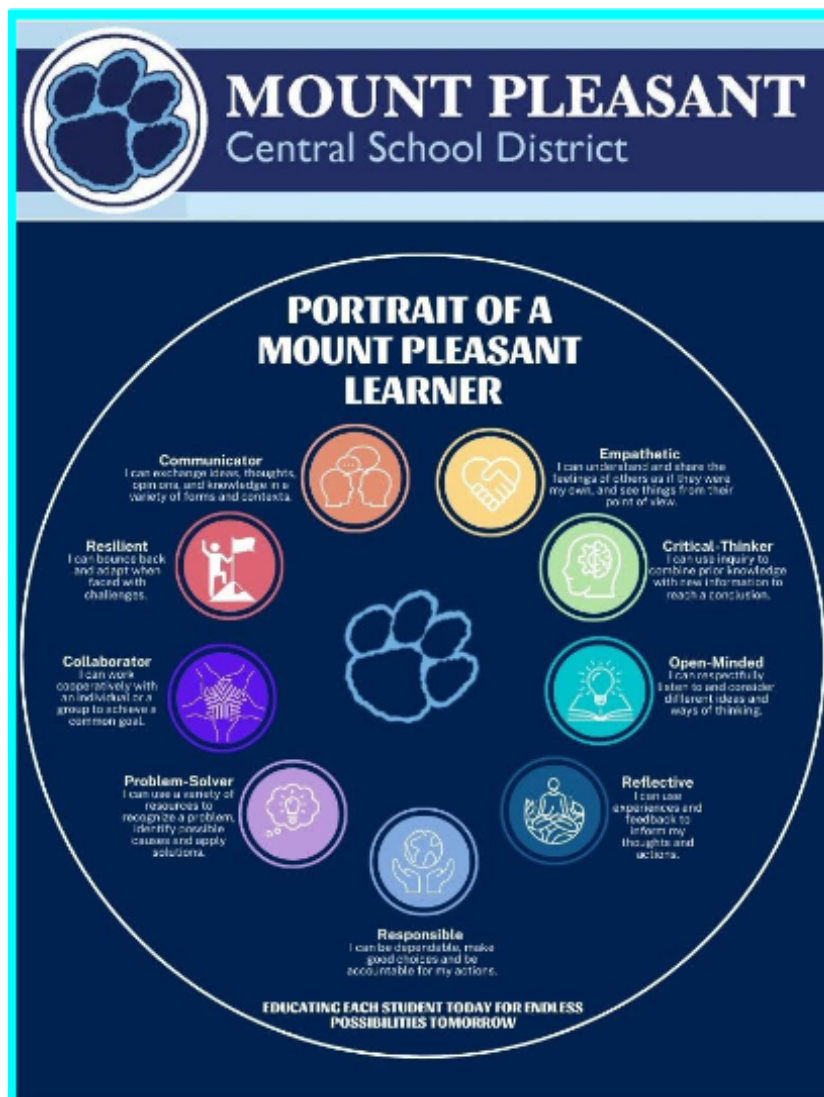
Sora offers the ability for students to explore age-appropriate digital books from NY Reads



- Here's how to access titles from this State-wide collection through Sora:
1. In Sora, sign into Southern Westchester BOCES with your school district credentials.
 2. Click or tap menu icon and select Add library.
 3. Use the search box to find and select NY Reads.
 4. Find and select your school district to continue.
 5. Sign in with your school credentials.
 6. Now when you search for books, it will look in both collections. When browsing, you can choose which collection to look at.

Westlake Middle School Website

Mount Pleasant Central School District Website



Anthony Mungoli

Anthony is using Smore to create beautiful newsletters

