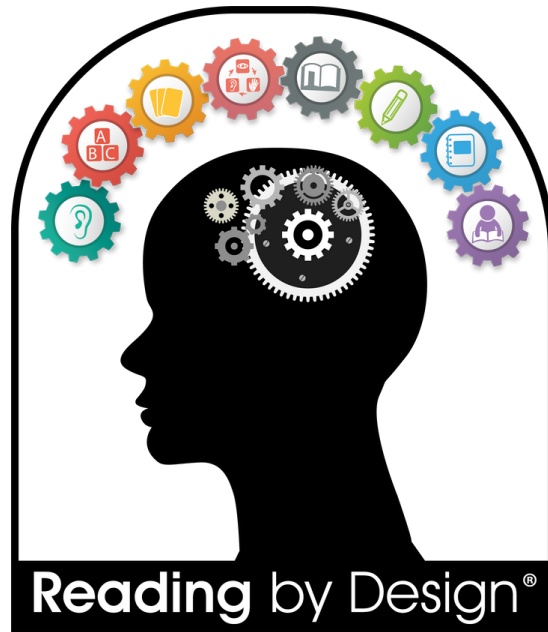


READING BY DESIGN



SYSTEMATIC, EXPLICIT, AND INTENSIVE READING INTERVENTION

Reading by Design: An Individualized Literacy Intervention is a systematic, multisensory approach aligned with research-based practices for developing literacy. This intervention follows an intensive, explicit, and cumulative design for remediation of reading and writing skills at all grade levels. This comprehensive program addresses the following components: phonological awareness, sound-symbol association, six syllable types, written spelling patterns, morphology, syntax, reading fluency, and comprehension. Progress monitoring and review lessons are embedded throughout the program to inform student progress and promote reading and writing automaticity. Reading by Design may be used with students in kindergarten through grade 12 in a small, homogeneous group setting. (Teacher training required.)





JUST THE FACTS

Reading by Design is a **FIVE** volume set

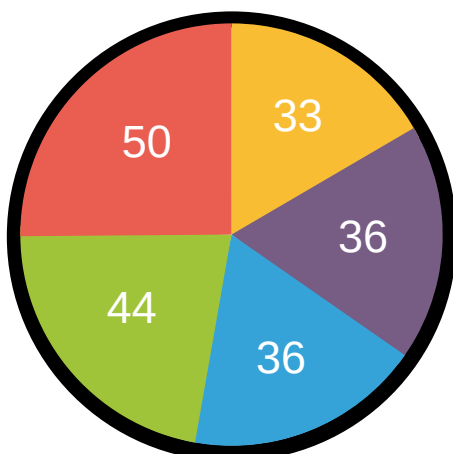
- Volume 1: Alphabetic principle
- Volumes 2–4: Six syllable types, digraphs, diphthongs, vowel pairs, consonant clusters, special situations, etc.
- Volume 5: Greek and Latin roots, morphology

Reading by Design

- May Be Used K–12
- Recommended Delivery
 - 4–5 days per week
 - One lesson per day (30–45 minutes)
- Mastery Checks
 - Progress monitoring
 - Placement in program
 - Pre- and post-assessment
- Bridge Lessons
- Review Lessons



Reading by Design is made up of **199** lessons



- Volume 1: 33 Lessons
- Volume 2: 36 Lessons
- Volume 3: 36 Lessons
- Volume 4: 44 Lessons
- Volume 5: 50 Lessons

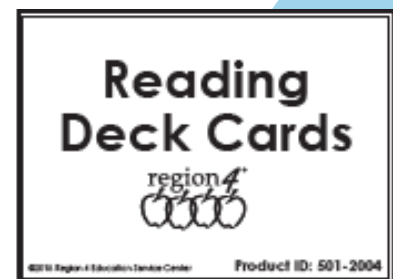
Reading by Design follows a

PREDICTABLE LESSON ROUTINE



Reading by Design includes the following **Ancillary Materials**

- Reading by Design Lessons (Volumes 1–5)
- Linking Spelling to Reading Dictionary
- Reading Rules Posters
- Deck Cards
 - Spelling Deck (purple)
 - Reading Deck (white)
 - High-Frequency Word Deck (blue)
 - Morpheme Deck (green)
 - What's Missing Cards (yellow)





Does *Reading by Design* Align with the Dyslexia Handbook, 2021 Update?

This document (click [here](#)) explains each of the components of instruction and methods of delivery outlined in the Dyslexia Handbook, 2021 Update. It details each part of the Reading by Design daily lesson cycle which aligns with this criterion.

Training Requirements:

- The intended audience includes individuals who will be providing dyslexia or basic reading skills reading intervention in a school setting.
- Registration cost covers eight days of professional development and teaching materials.
- Participants must attend all eight days of training which include initial five-day basic training and three follow-up sessions.
- Participants must complete pre-course and daily assignments that requires outside of session hours to complete.
- Participants must demonstrate mastery of content with daily assignments and successful practicum model lesson completion.

In order to receive the Reading by Design Certificate of completion from Region 10 ESC, participants must attend the full 5-day session, complete all coursework assignments, and successfully pass the practicum model lesson.

REGISTRATION

Find Upcoming Reading by Design Training Dates [HERE](#)

Questions:

Contact - Amie Davenport at amie.davenport@region10.org for more information.