

# ASTHMA



# WHAT IS ASTHMA?

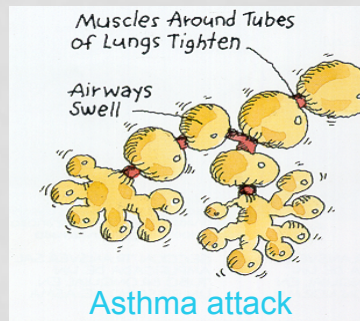
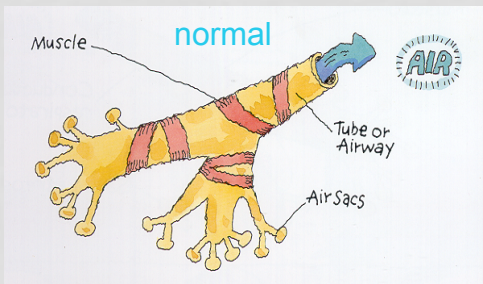


- A reversible, obstructive lung disease caused by an excessive reaction of the airways to certain stimuli or “triggers”
- One of the Reactive Airway Diseases (RAD) that is treatable
- A life-threatening disease if not properly managed

# 3 COMPONENTS OF AN ASTHMA ATTACK

## 1. Bronchospasm

The smooth muscles that wrap around the windpipe (bronchi) tighten, reducing the size of the airway.



# COMPONENTS OF AN ASTHMA ATTACK

## 2. Inflammation

The mucosal lining of the windpipe becomes inflamed and swells, thereby reducing the size of the airway even further.



## 3. Mucus

Increased mucus production takes up more space; now the airway is very constricted.

# ASTHMA IS NOT:

- Contagious – Usually genetic
- Infectious – It is a chronic disease
- A Good Excuse to lead a sedentary life or become a couch potato!



# SIGNS AND SYMPTOMS OF AN ASTHMA ATTACK

- Wheezing, coughing
- Shortness of breath
- Chest feels tight
- Dry mouth
- Fatigue
- Itchy chin or clipped speech
- Headache
- “I don’ t feel well”



# HOW CAN YOU HELP?

- **Recognize** the early signs and symptoms of an asthma attack
- **Relax**, don't panic
- **Reassure** the student and try to calm them
- **Refer** to the student's health care plan



# HOW TO ASSIST THE STUDENT

- Call or have someone call for help
- Ask student if they have an inhaler
- Suggest



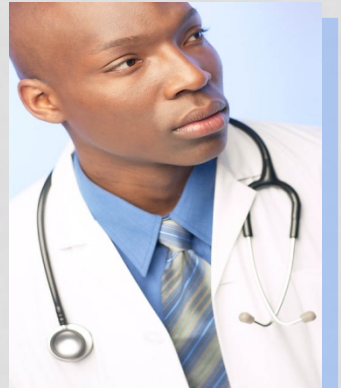
Deep coughing to bring up mucus  
Belly breathe to relax and calm student





# WHEN DO YOU CALL ?

- Wheezing or coughing increases after taking medications
- Difficulty breathing
  - retractions seen
  - hunched over position
- Child has trouble walking or talking, or stops playing and cannot start again
- Lips or fingernails appear “blue”



# PREVENTION: KNOW ASTHMA ATTACK TRIGGERS!

Pets



Weather

Indoor pollution



Exercise



Pollens



## **HOW TO USE THE STUDENT'S HEALTH CARE PLAN**

- Read the health care plan developed by the school nurse
- Know your student's asthma attack triggers
- Be familiar with emergency action plans
- Contact school nurse with questions

