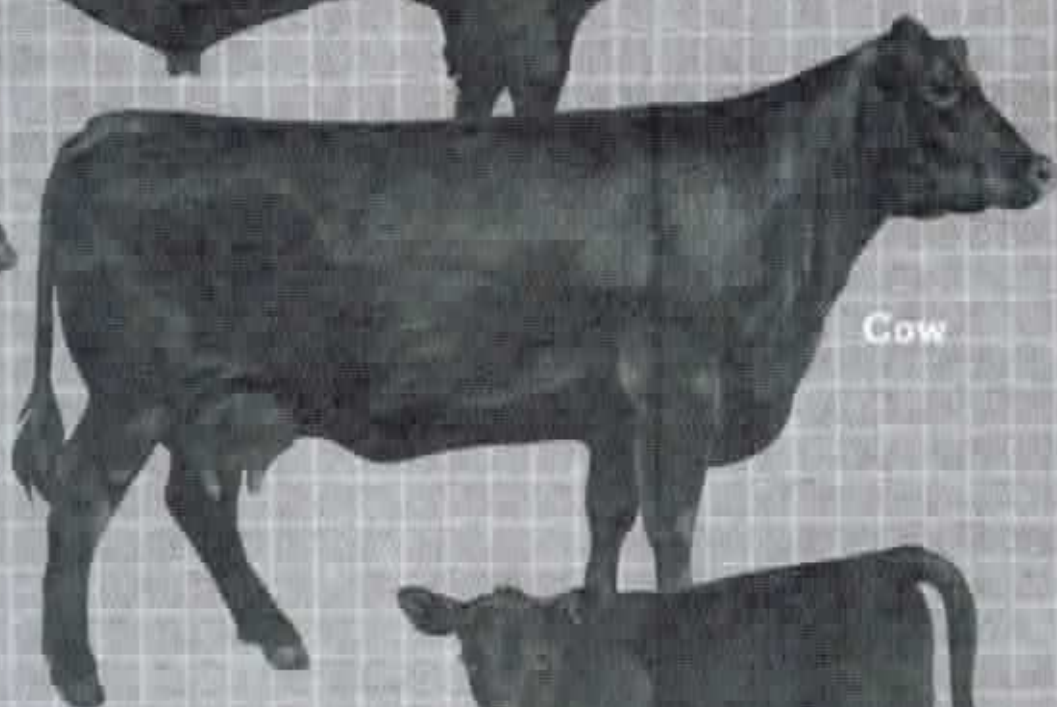


Bull



Cow



Calf

BEEF CATTLE

W. K. ...

BEEF CATTLE

Background Information

The word "cattle" comes from the Old French word "chat-tel" which means possession. It is believed that cattle were first domesticated in Europe and Asia during the Stone Age. Christopher Columbus introduced cattle to the Western Hemisphere on his second voyage to the New World in 1493. The first cattle in Minnesota belonged to soldiers at Fort Snelling, which was established in 1820.

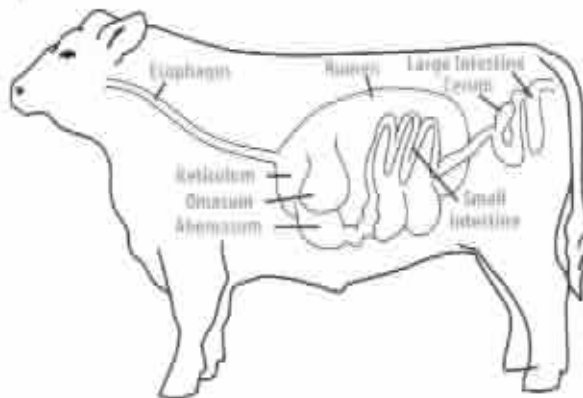
The world has 37.8% grassland suitable for beef cattle. The United States and Australia are the top beef-producing countries in the world. Texas is the leading cattle state. There are many breeds of beef cattle. Hereford and Black Angus are among the most popular. Some cattle are crossbred, which combines the best traits of two or more breeds.

Growth and Feeding

Female cattle are called heifers. After they have given birth they are called cows. Male cattle are either bulls or steers. Bull calves that have grown to full maturity are capable of siring offspring. Steers are male cattle that have been neutered, much like a dog or cat, and are not able to reproduce. They do not become as large or aggressive as bulls.

A cow is pregnant for about nine months. She usually gives birth to one offspring, which is called a calf, but sometimes a cow may have twins. When a cow gives birth, it is called calving. Cows nurse their calves until they are about seven months old. Some heifer calves are kept in the herd to produce the next generation of calves. A heifer may have her first calf when she is two years old. Steers and heifers that are not being kept for breeding will be moved to a feedlot until they are market-ready.

Cattle in the feedlot eat corn, alfalfa and silage. Their diets may also include crop by-products such as cotton seed hulls, corn stalks and sugarbeet pulp. Even leftover bakery products can be ground and used as part of a balanced feed ration. Feedlot cattle are usually ready for market at 18 to 20 months of age and weigh between 1,100 and 1,400 pounds.



Ruminant Digestive System

Ruminant animals have a stomach with four compartments. They swallow food in large pieces into the first stomach compartment, bring the food back into the mouth and chew it again. This is called "chewing the cud." The food is swallowed again and moves through the four stomach compartments. Because they are ruminant animals, cattle can digest grass, roughage, food by-products and other materials people can't eat. They convert these otherwise unusable grasses and other products into nutrients for humans. Camels, deer, sheep and llamas are also ruminant animals.

Products

Top 10 Minnesota Counties with Beef Cows in 2007:
Fillmore, Otter Tail, Morrison, Cass, Todd, Beltrami,
Clearwater, Stearns, Roseau and Houston



Cuts of Beef

Cattle provide cuts of meat such as steaks, roasts and ground beef (hamburger). A market beef that weighs 1,100 pounds will yield about 475 pounds of beef for a grocery store's meat case. The remaining parts of the beef are used in by-products.

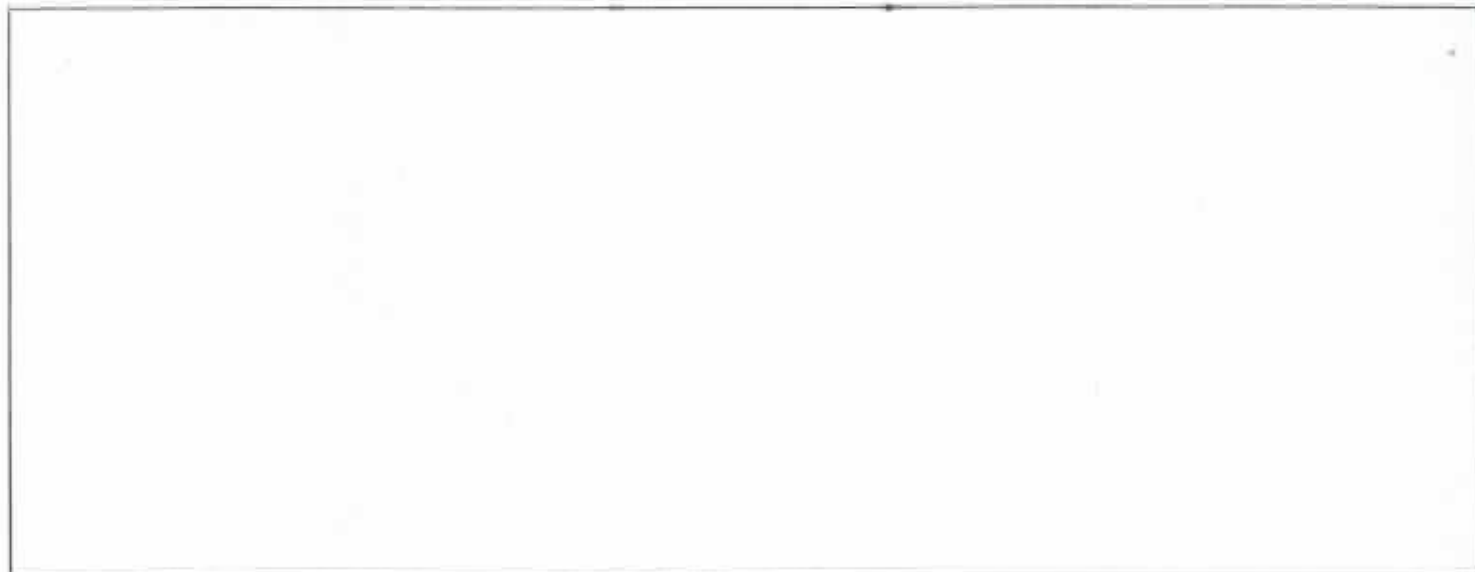
Other Products

Meat from cattle is called beef. Cattle also produce a variety of by-products used in industrial, pharmaceutical and household items. Fats and gelatin are used to make soap, shampoo, cosmetics, desserts and many industrial products such as photographic film and light filters. The pancreas and liver are used for medicines for diseases such as anemia and hypoglycemia.

Hide, hooves and hair are used in products such as sports equipment, leather goods and paint brushes. A football, frequently called a "pigskin," is actually made from cow hide. The hide and hair from a beef animal weighs 100 pounds. In fact, it takes 3,000 cows to supply the National Football League with enough leather for a year's supply of footballs. 99% of every beef animal is used for meat or other products.

BEEF CATTLE

1. In the box provided, draw a bull, cow, and calf.



2. Where does the word cattle come from?
3. Who are the top beef-producing countries and why?
4. What do cattle eat?
5. What are female cattle called before and after giving birth?
6. What are male cattle called?
7. How long is a cow pregnant? Explain the birthing process and what happens after a calf is born.
8. Describe the digestive system of ruminant animals.
9. Draw a picture representing the cuts of beef.
10. What is meat from cattle called?
11. Identify several ~~other~~ by-products cattle produces.
12. Using your map of Minnesota counties, create a symbol for beef cows and mark the top 10 counties that had beef cows in 2007.