



**GROVELAND PARK
ELEMENTARY SCHOOL**

Groveland's Counseling Corner



Contact Us

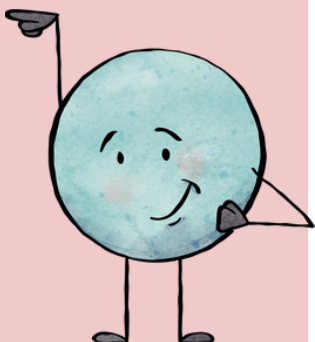
Please contact us with any questions or concerns, or if you feel your student could use additional support in any of these areas.

Ms. Felber:
elina.felber@spps.org
Phone: 651-744-5311

Ms. Emily:
emily.spofford@spps.org
Phone: 651-603-4669

Resources

[Groveland Virtual
Calming Room](#)



HELLO!

Our names are Ms. Felber and Ms. Emily and we are the school counselors at Groveland.

Ellie Felber has been at Groveland since 2020. In the 23-24 school year, she will be supporting students in Kindergarten, 3rd, 4th, and 5th grade.

Emily Spofford joined the counseling team in the 23-24 school year and supports students in 1st and 2nd grade.

Our primary focus is to provide the support students need to be successful in school and in life. We support students in academic, social/emotional, and postsecondary areas through individual meetings, small groups and classroom lessons. We use guidelines and frameworks developed by the American School Counselor Association (ASCA) to inform the work that we do at Groveland Park. We collaborate with teachers and the other support staff to make sure that all students are receiving the support that they need to be successful.

We love being school counselors and feel honored to work with so many wonderful students and families every day! Our hope for all of our students is that they would feel valued and supported in their journey as learners.