

**SCHOOL ENROLLMENT PROJECTIONS**  
**FOR THE**  
**MARCELLUS CENTRAL SCHOOL DISTRICT**

**PREPARED BY:**

**CENTRAL NEW YORK REGIONAL PLANNING & DEVELOPMENT BOARD**  
**126 N. SALINA STREET, 100 CLINTON SQUARE, SUITE 200**  
**SYRACUSE, NEW YORK 12305**

**APRIL, 1998**

## TABLE OF CONTENTS

|      |  |    |
|------|--|----|
| I.   | Introduction   | 1  |
| II.  | Data Base and Assumptions                            | 1  |
| III. | Evaluation of Previous Enrollment Projection Figures | 2  |
| IV.  | Historical Baseline Data and Analysis                | 2  |
|      | 1990 Census Data                                     | 2  |
|      | Historical Enrollment Data                           | 3  |
|      | Birth Rate Data                                      | 6  |
|      | Permit Data  | 7  |
| V.   | Current Development Trends                           | 9  |
|      | Proposed Residential Building Activity               | 9  |
|      | Town of Camillus                                     | 9  |
|      | Town of Marcellus                                    | 10 |
|      | Village of Marcellus                                 | 11 |
|      | Town of Onondaga                                     | 11 |
|      | Residential Summary                                  | 13 |
| VI.  | Observations and Enrollment Projections              | 14 |
|      | Technical Appendices                                 | 18 |
|      | A. School District Demographic Profile               | 19 |
|      | B. Town Population Comparisons 1980 – 1996           | 23 |
|      | C. Grade to Grade Single Family Housing Multipliers  | 24 |
|      | D. Projected Single Family Housing Multipliers       | 25 |
|      | E. Grade To Grade Cohort Survival Ratios             | 26 |
|      | F. Birth to Kindergarten Survival Ratio              | 27 |

## LIST OF TABLES

|    |   |    |
|----|---|----|
| 1. | Projected/Actual Enrollment Figures 1995-96, 1996-97, and 1997-98                                 | 2  |
| 2. | Marcellus Central School District Enrollment 1990-91 Through 1997-98                              | 4  |
| 3. | Marcellus Central School District Aggregate School Enrollment                                     | 4  |
| 4. | Live Births 1984 – 1996 Towns of Camillus, Marcellus, Onondaga, Otisco, Skaneateles, and Spafford | 6  |
| 5. | Housing Units Marcellus Central School District   | 8  |
| 7. | Projected Housing Units Marcellus Central School District 1998-2002                               | 9  |
| 8. | Marcellus Central School District Enrollment Projections Through 2002 – 2003                      | 16 |
| 9. | Aggregate Enrollment Projections Marcellus Central School District Through 2002 – 2003            | 16 |

## LIST OF FIGURES

|    |  |    |
|----|--|----|
| 1. | Marcellus Central School District Aggregated Enrollment                                  | 5  |
| 2. | Marcellus Central School District Historical and Anticipated Single Family Housing Units | 14 |
| 3. | Marcellus Central School District Enrollment 1997 and 2002                               | 17 |

# **ENROLLMENT PROJECTIONS FOR THE MARCELLUS CENTRAL SCHOOL DISTRICT**

## **I. INTRODUCTION**

This study has been completed as part of an agreement between the Central New York Regional Planning & Development Board and the Marcellus Central School District. Contained in this document are District wide school enrollment projections for a five-year period beginning with the 1998-1999 school year through the 2002-2003 school year. A hybrid methodology using age cohort survival and housing multiplier ratios was used to prepare these projections. Outlined below is a discussion of the database, assumptions, activities, and trends that influence the number of students enrolled in the Marcellus Central School District.

## **II. DATA BASE AND ASSUMPTIONS**

The methodology used in the preparation of this projection study combines a cohort survival component and a building multiplier ratio. Supporting data includes the following:

1. 1990 Census of Population and Housing information indicating the number of persons and housing units located within the Marcellus Central School District;
2. historical school enrollment data beginning with the 1990 – 91 school year;
3. annual live birth data from the New York State Department of Health for the period 1984 – 1996;
4. building permit data to determine the number of housing units added due to new construction/rehabilitation, or deleted due to demolition, within the District for the period 1990 – 1997;
5. anticipated residential building activity in the School District through the year 2003;
6. interviews with local government officials and site visits to existing and planned residential developments.

During the preparation of this enrollment projection report the following three assumptions were made:

1. The District's current half-day Kindergarten program will remain in effect throughout the projection period.

2. There will be no significant change in the student dropout rate over the projection period.
3. The number of families within the Marcellus Central School District choosing alternatives to public education, including private, parochial, and home school options will remain constant during the projection period.

### III. EVALUATION OF PREVIOUS ENROLLMENT PROJECTION FIGURES

Initial District enrollment projections were completed in June of 1995. The projected and actual enrollment figures for 1995 - 96 through 1997 - 98 are presented in Table 1.

TABLE 1.

|       | 1995 - 96 |        |         | 1996 - 97 |        |         | 1997 - 98 |        |         |
|-------|-----------|--------|---------|-----------|--------|---------|-----------|--------|---------|
|       | Projected | Actual | % Diff. | Projected | Actual | % Diff. | Projected | Actual | % Diff. |
| K     | 174       | 190    | -9      | 178       | 182    | -2      | 167       | 182    | -9      |
| 1     | 188       | 195    | -4      | 198       | 215    | -9      | 205       | 212    | -3      |
| 2     | 178       | 172    | 3       | 152       | 155    | -2      | 164       | 174    | -6      |
| 3     | 156       | 165    | -6      | 174       | 162    | 7       | 150       | 158    | -5      |
| 4     | 156       | 151    | 3       | 158       | 175    | -11     | 176       | 167    | 5       |
| 5     | 174       | 168    | 3       | 156       | 153    | 2       | 159       | 178    | -12     |
| 6     | 163       | 160    | 2       | 175       | 171    | 2       | 157       | 153    | 3       |
| 7     | 132       | 133    | -1      | 169       | 160    | 5       | 181       | 186    | -3      |
| 8     | 178       | 179    | -1      | 130       | 137    | -5      | 167       | 155    | 7       |
| 9     | 143       | 153    | -7      | 186       | 174    | 6       | 136       | 151    | -11     |
| 10    | 148       | 143    | 3       | 133       | 141    | -6      | 175       | 165    | 6       |
| 11    | 135       | 135    | 0       | 141       | 140    | 1       | 126       | 132    | -5      |
| 12    | 132       | 129    | 2       | 133       | 131    | 2       | 140       | 135    | 4       |
| Total | 2,057     | 2073   | -1      | 2083      | 2093   | -1      | 2103      | 2148   | -2      |

District-wide, the projected enrollment figures were lower than the actual enrollment figures for all verifiable years. Although the projected and actual figures varied little, the frequency of low-grade projections increased over time, as did the percent difference between low-grade projections and actual enrollment figures for that grade.

### IV. HISTORICAL BASELINE DATA AND ANALYSIS

#### 1990 Census Data

The 1990 Census of Population and Housing provides base year data from which to review activities and trends through 1997. Census data is useful in providing the total number of housing units, and housing types, within the District. Marcellus School District officials have ensured that the School District boundaries have not changed significantly since the 1990 Census.

Population and housing data for the six towns partially or entirely within the School District boundary were obtained from the 1990 Census. These towns are Camillus,



Marcellus, Onondaga, Otisco, Skaneateles, and Spafford. 1990 Census data was also obtained for the Village of Marcellus. Original 1990 Census data for the Marcellus Central School District can be found in Appendix A. For a more detailed discussion of 1990 Census data refer to the original 1995 enrollment projection report.

Appendix B contains updated population estimates through July 1, 1996 for each District Town. Between 1990 and 1996, School District enrollment increased by 154 students, or 7.9 percent, while the total town populations increased by an estimated 8.9 percent.

### **Historical Enrollment Data**

Analysis of District enrollment trends provides the foundation from which to project future enrollment. Historic enrollment data for the period 1990 – 91 through 1997 – 98 was obtained from the Marcellus School District office and is presented in Table 2. This data provides a means to track grade-to-grade survival ratios and to assess cohort survival from year to year. It should be noted that these figures represent the October 1 enrollment for each of the given school years.

The 1997 - 98 enrollment for the Marcellus Central School District was 2,148 students. With the exception of the 1994 – 95 school year, enrollment in the District has increased steadily over the past eight years. The total net enrollment increase is approximately 11 percent, or 209 students.

Analysis of aggregated enrollment data for the past eight years (Table 3) reveals annual fluctuation at the elementary level (grades K-3). The 1997 – 98 elementary enrollment of 726 students represents a net enrollment increase of approximately 6 percent (39 students) over the eight year study period. The current enrollment also represents the maximum number of elementary students enrolled over the study period. This enrollment level was also attained during the 1993 – 94 school year. Since that time, elementary enrollment has fluctuated annually.

Enrollment at the middle school level (grades 4 – 8) increased steadily since the 1992 – 93 school year. The 1997 – 98 middle school enrollment of 839 students represents a net increase of approximately 19 percent (136 students) over the base year enrollment of 703 students.

High school enrollment (grades 9 – 12) exhibits the greatest degree of stability over the study period with a net increase of only 34 students or 6 percent. The 1997 – 98 high school enrollment was 583 students. This represents a .5 percent decrease (3 students) from the previous year. The maximum variation between low enrollment (540 students in 1991-92) and high enrollment (586 students in 1996-97) was 8.5 percent.

Given the current trends in elementary and middle school enrollment, it can be reasonably expected that high school enrollment will increase over the next several years.

Variation in annual, aggregate enrollment figures is graphically presented in Figure 1.

| <p align="center"><b>TABLE 2</b><br/> <b>MARCELLUS CENTRAL SCHOOL DISTRICT ENROLLMENT</b><br/> <b>1990-1991 THROUGH 1997-1998*</b></p> |              |              |              |              |              |              |              |              |
|--|--------------|--------------|--------------|--------------|--------------|--------------|--------------|--------------|
| Grade  | 1990-91      | 1991-92      | 1992-93      | 1993-94      | 1994-95      | 1995-96      | 1996-97      | 1997-98      |
| K  | 186          | 171          | 181          | 188          | 166          | 190          | 182          | 182          |
| 1  | 194          | 219          | 194          | 199          | 219          | 195          | 215          | 212          |
| 2  | 139          | 158          | 175          | 159          | 159          | 172          | 155          | 174          |
| 3  | 168          | 137          | 147          | 180          | 154          | 165          | 162          | 158          |
| 4  | 139          | 167          | 135          | 159          | 174          | 151          | 175          | 167          |
| 5  | 141          | 139          | 173          | 128          | 162          | 168          | 153          | 178          |
| 6  | 144          | 142          | 144          | 168          | 128          | 160          | 171          | 153          |
| 7  | 144          | 147          | 148          | 146          | 180          | 133          | 160          | 186          |
| 8  | 135          | 151          | 146          | 147          | 137          | 179          | 137          | 155          |
| 9  | 173          | 159          | 147          | 150          | 159          | 153          | 174          | 151          |
| 10   | 138          | 146          | 132          | 153          | 140          | 143          | 141          | 165          |
| 11   | 122          | 120          | 142          | 131          | 134          | 135          | 140          | 132          |
| 12   | 116          | 115          | 129          | 143          | 125          | 129          | 131          | 135          |
| <b>Total</b>   | <b>1,939</b> | <b>1,971</b> | <b>1,993</b> | <b>2,051</b> | <b>2,037</b> | <b>2,073</b> | <b>2,096</b> | <b>2,148</b> |

\*Note: totals do not include ungraded Handicapped, Special Education, or BOCES students

Source: Marcellus Central School District

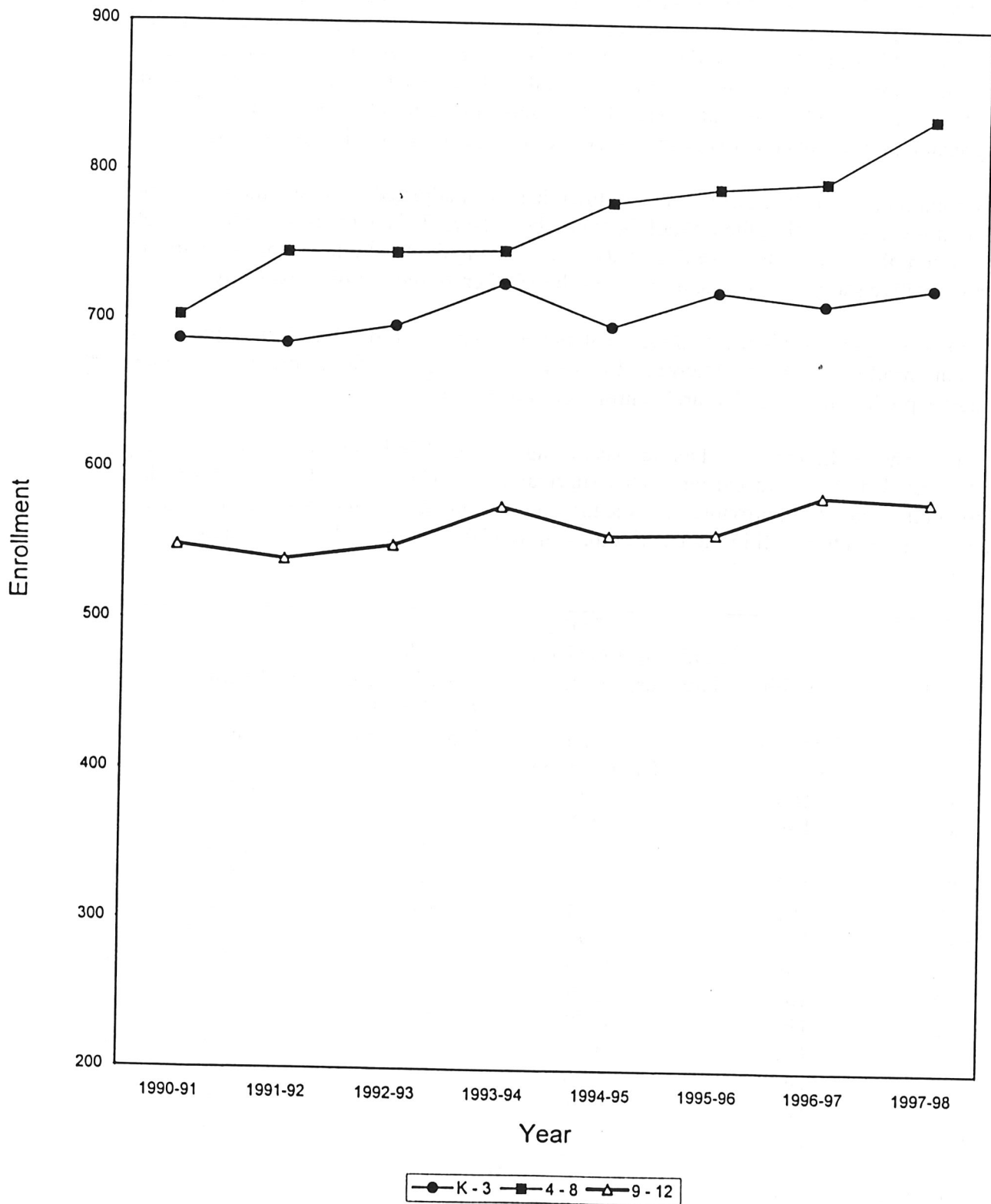
| <p align="center"><b>TABLE 3</b><br/> <b>MARCELLUS CENTRAL SCHOOL DISTRICT</b><br/> <b>AGGREGATE SCHOOL ENROLLMENT</b><br/> <b>1990 - 1991 THROUGH 1997 - 1998*</b></p> |              |              |              |              |              |              |              |              |
|---|--------------|--------------|--------------|--------------|--------------|--------------|--------------|--------------|
| Grade   | 1990-91      | 1991-92      | 1992-93      | 1993-94      | 1994-95      | 1995-96      | 1996-97      | 1997-98      |
| K - 3   | 687          | 685          | 697          | 726          | 698          | 722          | 714          | 726          |
| 4 - 8   | 703          | 746          | 746          | 748          | 781          | 791          | 796          | 839          |
| 9 - 12  | 549          | 540          | 550          | 577          | 558          | 560          | 586          | 583          |
| <b>Total</b>  | <b>1,939</b> | <b>1,971</b> | <b>1,993</b> | <b>2,051</b> | <b>2,037</b> | <b>2,073</b> | <b>2,096</b> | <b>2,148</b> |

\*Note: totals do not include ungraded Handicapped, Special Education, or BOCES students

Source: Marcellus Central School District

Figure 1.

Marcellus Central School District Aggregated Enrollment



## Birth Rate Data

Live Birth Data obtained from the New York State Department of Health is used to assess the relationship between births within School District Towns and the number of children entering Kindergarten. Typically, a high number of births in a given year will result in a high number of students entering Kindergarten five or six years later. Live birth data for the Towns of Camillus, Marcellus, Onondaga, Otisco, Skaneateles and Spafford were used in the analysis of the Marcellus Central School District. This aggregation represents the towns entirely, or partially, within the District's boundary.

The total number of live births for each town has been adjusted to reflect the percentage of total town area within the School District's boundary. This generates a more accurate prediction of Kindergarten size than that obtained using the total number of births from a representative sample of towns, as done for the 1995 enrollment projection study.

Five and six year survival ratios were calculated from live birth data and Kindergarten student enrollment. It was determined that the six-year cohort figure provides the most accurate prediction of Kindergarten enrollment for the District.

Over the past eight years, the District has averaged .9463 Kindergarten students for every birth recorded six years earlier. This survival ratio, when applied to live birth data through the year 1996, provides an indication of the number of Kindergarten students that can be expected to enroll in the District through the 2002 – 2003 school year, as shown in Table 4.

| Year<br>Of Birth | Number of<br>Births | Year To<br>Kindergarten | Number of<br>Kindergarten<br>Students | Survival<br>Ratio |
|------------------|---------------------|-------------------------|---------------------------------------|-------------------|
| 1984             | 188                 | 1990                    | 186                                   | 0.9894            |
| 1985             | 199                 | 1991                    | 171                                   | 0.9894            |
| 1986             | 206                 | 1992                    | 181                                   | 0.8786            |
| 1987             | 193                 | 1993                    | 188                                   | 0.9741            |
| 1988             | 197                 | 1994                    | 166                                   | 0.8426            |
| 1989             | 189                 | 1995                    | 190                                   | 1.0053            |
| 1990             | 196                 | 1996                    | 182                                   | 0.9286            |
| 1991             | 189                 | 1997                    | 182                                   | 0.9630            |
| 1992             | 180                 | 1998                    | <b>170</b>                            | <b>0.9444</b>     |
| 1993             | 187                 | 1999                    | <b>177</b>                            | <b>0.9465</b>     |
| 1994             | 161                 | 2000                    | <b>152</b>                            | <b>0.9440</b>     |
| 1995             | 180                 | 2001                    | <b>170</b>                            | <b>0.9444</b>     |
| 1996*            | 149                 | 2002                    | <b>141</b>                            | <b>0.9463</b>     |

\*Note: 1996 Provisional Data – May Be Subject To Revision

**BOLD NUMBERS** are projected

Source: New York State Department of Health

## Permit Data

A major factor that influences School District enrollment is the change in the number of housing units within the District. Residential building activity was assessed for each town within the Marcellus Central School District beginning with the base year 1990. The assessment focused on building permit records maintained by each town in the District, and on conversations with local town officials.

The results of the building permit analysis indicate that residential building activity within the Marcellus Central School District since 1990 has consisted primarily of single-family detached structures (Table 5). Between 1990 and 1997, there has been a net increase in new residential construction building permits issued within the District. During this period, permits for 237 single family units, and 12 mobile home units were issued

To better determine the impact new residential construction has had on student enrollment, a housing multiplier ratio was developed for each housing type in the District. The Housing Enrollment Multiplier is the number of students, by grade level, that have occupied each type of housing unit in the District between 1990 and 1997. For example, during the 1997 – 98 school year, based on student enrollment and the number of single family detached housing units in the District; each single family home housed approximately 0.0460 Kindergarten students. In other words, one in approximately every 21 single-family homes in the District has a child in Kindergarten this year.

A complete listing of the single family detached housing multipliers for the Marcellus Central School District can be found in Appendix C.



## V. CURRENT DEVELOPMENT TRENDS

### **Proposed Residential Building Activity**

Given the historical trends in residential construction within the Marcellus Central School District, it is estimated that a total of 83 new units of housing will be constructed in the District over the next five years. Of these units, 74 will be single family dwellings, and 9 will be mobile homes.

The annual breakdown for projected housing construction over the next five years is presented in Table 7. A discussion of recent building activity and local planning policies in each of the School District's constituent communities is presented in support of residential construction projections.

| TABLE 7<br>PROJECTED HOUSING UNITS<br>MARCELLUS CENTRAL SCHOOL DISTRICT 1998 - 2002 |               |           |        |           |             |
|---|---------------|-----------|--------|-----------|-------------|
|   | Single Family | Townhouse | Duplex | Apartment | Mobile Home |
| 1998  | 14            | 0         | 0      | 1         | 38          |
| 1999  | 17            | 0         | 0      | 2         | 38          |
| 2000  | 17            | 0         | 0      | 2         | 38          |
| 2001  | 14            | 0         | 0      | 2         | 38          |
| 2002  | 12            | 0         | 0      | 2         | 38          |

### **Town of Camillus**

Only a small portion of the Town of Camillus is located within the Marcellus Central School District. The Camillus portion of the District includes the Hamlet of Martisco and portions of Munro Road, Lime Ledge Road, and Lyons Road.

- **Maestri Manor**

The original plan for the Maestri Manor Subdivision consisted of 116 single-family building lots. The project is located off of Munro Road, just north of the Tuscarora Country Club. The development was first approved in 1990. Since 1995, a total of 6 additional lots have been developed, bringing the total number of developed lots to 24. Costs associated with excavation significantly add to the cost of constructing a home in the Maestri Manor Subdivision. The projections included in this report anticipate the development of less than one lot annually in the Maestri Manor Subdivision.

- **Twilight Acres**

The Twilight Acres Subdivision was approved by the Town of Camillus in 1992, and consists of six single-family building lots. The development is located along Lyons

Road. Since 1995, one lot has been developed, bringing the total number of developed lots to three. The remaining three lots are located on the south side of Lyons Road. Each is approximately 7 to 10 acres in size. All of the remaining lots have extremely steep slopes and will require a great deal of excavation prior to development. Given these conditions, no further development is expected in the Twilight Acres subdivision over the next five years.

Information pertaining to the Town of Camillus was obtained from interviews with Town Zoning and Code Enforcement Officer, Tom Price.

### **Town of Marcellus**

Approximately ninety percent of the Town of Marcellus is located in the Marcellus Central School District. Listed below are developments that will have future impact on enrollment patterns within the Marcellus Central School District.

- **Campbell Farm Subdivision**

The Campbell Farm Subdivision is located between Marble and Slate Hill Roads. Since 1995, one additional lot has been developed, bringing the total number of developed lots to two. At the present time, there are no plans to develop the remaining five lots.

- **Clark Terrace**

The Clark Terrace Subdivision has been completed for several years. No additional construction is expected to take place in the development or on the adjacent vacant land.

- **Douglas Perry Subdivision**

This three-lot subdivision off of Cedarvale Road has been completed. No additional development is planned.

- **Drexler Tract**

The Drexler Tract is located on Frank Gay Road. This four-lot subdivision was approved in 1995. Since that time, two lots have been developed, and the remaining two lots are expected to be completed within the next three years.

- **Folkways Tract**

The Folkways Tract is located off of Northwest Town Line Road and includes Browsing Lane, Deer Path, and Deer Circle. A total of 27 lots are located in the development, and one lot is vacant at this time. The vacant lot is owned by an adjacent landowner, and is not expected to be developed.

An eight-lot extension of the development received final approval by the Marcellus Planning Board and construction has begun. One lot has been developed and two more will be completed this year. These projections anticipate the development of the remaining five lots by the end of 2003.



- **Gallinger Farms**

Four of the eight lots in the Gallinger Farms Subdivision have been developed. The subdivision is located on the south side of Seneca Turnpike, just west of the Town Line Road intersection. No interest in additional development within the subdivision has been expressed. A landowner within the development bought 30 acres adjacent to his existing property. Development of this land is not expected.

No additional subdivision of the 100-acre parcel of land located south of the Gallinger Farms subdivision is anticipated.

- **Lathrop Heights**

This eight-lot subdivision located on Lathrop Drive is complete, and no additional development of the adjacent vacant land is anticipated at this time.

- **Louis Gooden Farm**

A total of six lots were approved in the Louis Gooden Farm Subdivision, which is located on Route 174, just south of the Seal Road intersection. To date, three single-family lots have been developed. The remaining three lots are projected to be developed over the next three years.

- **Haley Farm Subdivision**

This subdivision is located at the intersection of Amber and Brewer Roads. Twelve of the 13 approved lots have been developed. The remaining lot is owned by an out of state resident. Development of this lot is not expected.

Information pertaining to the Town of Marcellus was obtained through interviews with Sharon Volcko, Town Planning Board, and Joyce Potucek, Deputy Town Clerk

### **Village of Marcellus**

Since 1995, a total of three single-family homes have been constructed in the Village of Marcellus.

The only active subdivision within the Village is Marcellus Village Woods. The development consists of 28 single-family building lots. To date five homes have been constructed and one additional building permit has been issued. These projections assume that one home will be constructed in the Marcellus Woods Subdivision annually over the next five years.

Information pertaining to the Village of Marcellus was obtained from Gary March, Village Clerk.

### **Town of Onondaga**

Although only a small percentage of the Town of Onondaga's total land area is within the Marcellus Central School District boundary, 32 percent of the new single family construction that has taken place within the District since 1995 was located in the Town

of Onondaga. The availability of vacant land in the proximity of public utilities suggests new residential development within the School District will remain focused in this Town.

- **Buxton Woods**

Development in the Buxton Woods subdivision began in 1991. To date, 34 single family homes have been completed. The subdivision is located off of Cedarvale Road, just south of Kelly's Corners. Development interest in this subdivision remains very high, as indicated by ongoing construction activity. These projections assume all of the remaining vacant lots will be completed during the next five years at a rate of approximately five per year.

- **Cedarvale Ridge**

Cedarvale Ridge is a 33-lot subdivision located off of Cedarvale Road. Section one consists of 19 one-acre lots. To date, only one lot has been developed, and one lot has been sold. At the present time, no additional development is planned. These projections assume that one new home will be constructed annually over the next five years.

- **Eagle's Nest**

Final approval for this eight lot subdivision located on Beef Street was granted in 1995. Construction of the first single family home is expected to be completed by the end of 1998. Over the next five years, three of the remaining 4 lots are projected to be developed. Development of the remaining two lots is unlikely due to existing Niagara Mohawk easements.

- **Fagan's Farm**

Approval for this two-lot subdivision located at Beef Street and Route 175, was granted in 1990. To date, the vacant land remains for sale.

- **Howlett Hill Farms Extension**

Although the Howlett Hill Farms Development has been completed for many years, there are adjacent parcels that may be desirable as market conditions improve. There are several vacant lots along Collin Road, which runs north off of Corporal Welch Road. One owner controls five lots consisting of over 20 acres. This land would permit access to a 180-acre tract of land owned by Hazelwood Development Inc. The 180-acre parcel is located in an agricultural district. Under current zoning regulations, residential development is restricted. No expansion of the Howlett Hill Farms Subdivision is projected within the next five years, however, the District should continue to monitor the site.

- **Kencrest Estates**

Although the Kencrest Estates Subdivision was approved several years ago, there are still three vacant lots in the development. Two of the lots are owned by adjacent homeowners and are not expected to be developed. The remaining vacant lot is owned by one of the residents of the development and contains 43 acres. Although no new construction is planned, the adjacent parcel could accommodate a 20 to 30 lot extension of the Kencrest Estates development.

- **Miller Estate**

The Miller Estate is a four-lot subdivision located on the East Side of Kasson Road. The property owner's primary residence is the only home in the subdivision. It is unlikely that any further development will occur within the next five years.

- **Pumpkin Hollow**

Forty of the forty-one single-family building lots in the Pumpkin Hollow Subdivision have been completed. The remaining vacant lot is owned by an adjacent homeowner and is not expected to be developed.

A 29-acre parcel of land adjacent to the subdivision is owned by the Cedarvale Development Corporation and could accommodate an extension of the development. The enrollment projections contained in this report do not include any further construction in the Pumpkin Hollow subdivision, however, the District should continue to monitor the adjacent, vacant land.

- **Sycamore Hill**

The Sycamore Hill subdivision, located on Kasson Road, was started over 10 years ago and consists of thirty single-family building lots. Five lots remain vacant. These projections anticipate the development of one lot annually through 2003.

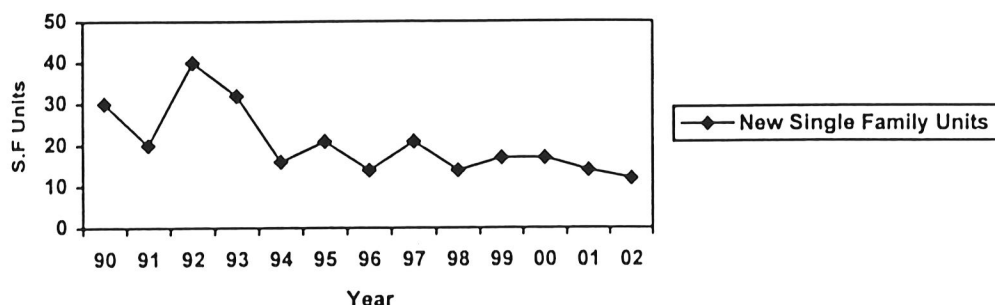
Another potential area for future development in the Town of Onondaga portion of the Marcellus Central School District is the 110 acres of land located at the intersection of Howlett Hill and Cedarvale Roads. The vacant land is located on the northwest corner of this intersection and is owned by B.H. & J. Development Corporation. These projections assume that the owners of this parcel will begin subdivision discussion within the next five years, however, no new home construction is projected over the next five years. The proximity of existing water and sewer services will enhance this location's desirability for development as market conditions improve.

Information pertaining to the Town of Onondaga was obtained through interviews with Joanie Jawarski, Planning & Zoning Secretary, and Ronald Ryan, Building Inspector/Zoning Enforcement Officer.

## **Residential Summary**

The sharp fluctuations in new residential construction exhibited throughout much of the 1990's are expected to taper off considerably over the next five years, as shown in Figure 2. Given the current climate for new home sales in Onondaga County, it is expected that new home construction will slowly decline through the 2002 – 03 school year. As a result, school enrollment will be influenced more by the low birth rates of the past several years than it will by the in-migration of new families to the District.

Figure 2.  
Marcellus Central School District  
Historical & Anticipated Single Family Housing Units



## VI. OBSERVATIONS AND ENROLLMENT PROJECTIONS

The previous sections have been used as a source of data from which to project the future enrollment of the Marcellus Central School District. Enrollment projections have been calculated by analyzing the data in relation to historical trends within the School District, projecting the future residential building activity, and individually weighing each component.

District-wide projections through the 2002-03 school year are presented in Tables 8 and 9 on the following page. A comparison of the current school year enrollment and the projected enrollment for the 2002-03 school year is shown in Figure 3. Some of the highlights expected for the next five years are listed below.

- District Enrollment is projected to fluctuate over the next 5 years resulting in a net increase of 1.5 percent.
- Kindergarten enrollment for the 1998-99 school year is projected to be 170 students. This represents a 6.5 percent decrease over the current years Kindergarten enrollment total.
- Kindergarten enrollment is projected to decrease by 22.5 percent over the next five years.
- The Kindergarten class size is expected to average 162 students over the next five years.
- Enrollment at the elementary school level (grades K – 3), is projected to remain quite stable at 727 students during the 1998 – 99 school year before decreasing to 641 students during the 2002 – 03 school year. District-wide, this represents a net decrease in enrollment at the elementary level of almost 12 percent (82 students) from the 1997 – 98 enrollment

- Middle school enrollment (grades 4 – 8), is projected to increase approximately 1.5 percent over the next five years. The projected enrollment of 854 students for the 2002-03 school year represents an increase of approximately 2 percent, or 15 students, over the current middle school enrollment of 839 students.
- Middle school enrollment is projected to peak at 872 students during the 2000 – 01 school year. This represents an increase of approximately 4 percent over the current middle school enrollment.
- The most substantial change in enrollment is projected to occur at the high school level (grades 9 – 12). Over the next five years, high school enrollment is projected to increase 17.5 percent (102 students).
- The average high school enrollment over the next five years is projected to be 641 students.

| TABLE 8<br>MARCELLUS CENTRAL SCHOOL DISTRICT<br>ENROLLMENT PROJECTIONS THROUGH 2002 - 2003 |         |              |              |              |              |              |
|--|---------|--------------|--------------|--------------|--------------|--------------|
| Grade  | 1997-98 | 1998-99      | 1999-00      | 2000-01      | 2001-02      | 2002-03      |
| K  | 182     | <b>170</b>   | <b>177</b>   | <b>152</b>   | <b>170</b>   | <b>141</b>   |
| 1  | 212     | <b>211</b>   | <b>196</b>   | <b>204</b>   | <b>175</b>   | <b>196</b>   |
| 2  | 174     | <b>171</b>   | <b>169</b>   | <b>157</b>   | <b>164</b>   | <b>140</b>   |
| 3  | 158     | <b>175</b>   | <b>171</b>   | <b>169</b>   | <b>157</b>   | <b>164</b>   |
| 4  | 167     | <b>161</b>   | <b>178</b>   | <b>174</b>   | <b>172</b>   | <b>160</b>   |
| 5  | 178     | <b>167</b>   | <b>161</b>   | <b>177</b>   | <b>173</b>   | <b>170</b>   |
| 6  | 153     | <b>179</b>   | <b>167</b>   | <b>161</b>   | <b>177</b>   | <b>173</b>   |
| 7  | 186     | <b>159</b>   | <b>186</b>   | <b>174</b>   | <b>168</b>   | <b>184</b>   |
| 8  | 155     | <b>186</b>   | <b>159</b>   | <b>186</b>   | <b>173</b>   | <b>167</b>   |
| 9  | 151     | <b>168</b>   | <b>200</b>   | <b>171</b>   | <b>199</b>   | <b>185</b>   |
| 10   | 165     | <b>140</b>   | <b>154</b>   | <b>185</b>   | <b>157</b>   | <b>184</b>   |
| 11   | 132     | <b>154</b>   | <b>131</b>   | <b>144</b>   | <b>173</b>   | <b>148</b>   |
| 12   | 135     | <b>128</b>   | <b>150</b>   | <b>127</b>   | <b>140</b>   | <b>168</b>   |
| Total  | 2,148   | <b>2,169</b> | <b>2,199</b> | <b>2,181</b> | <b>2,198</b> | <b>2,180</b> |

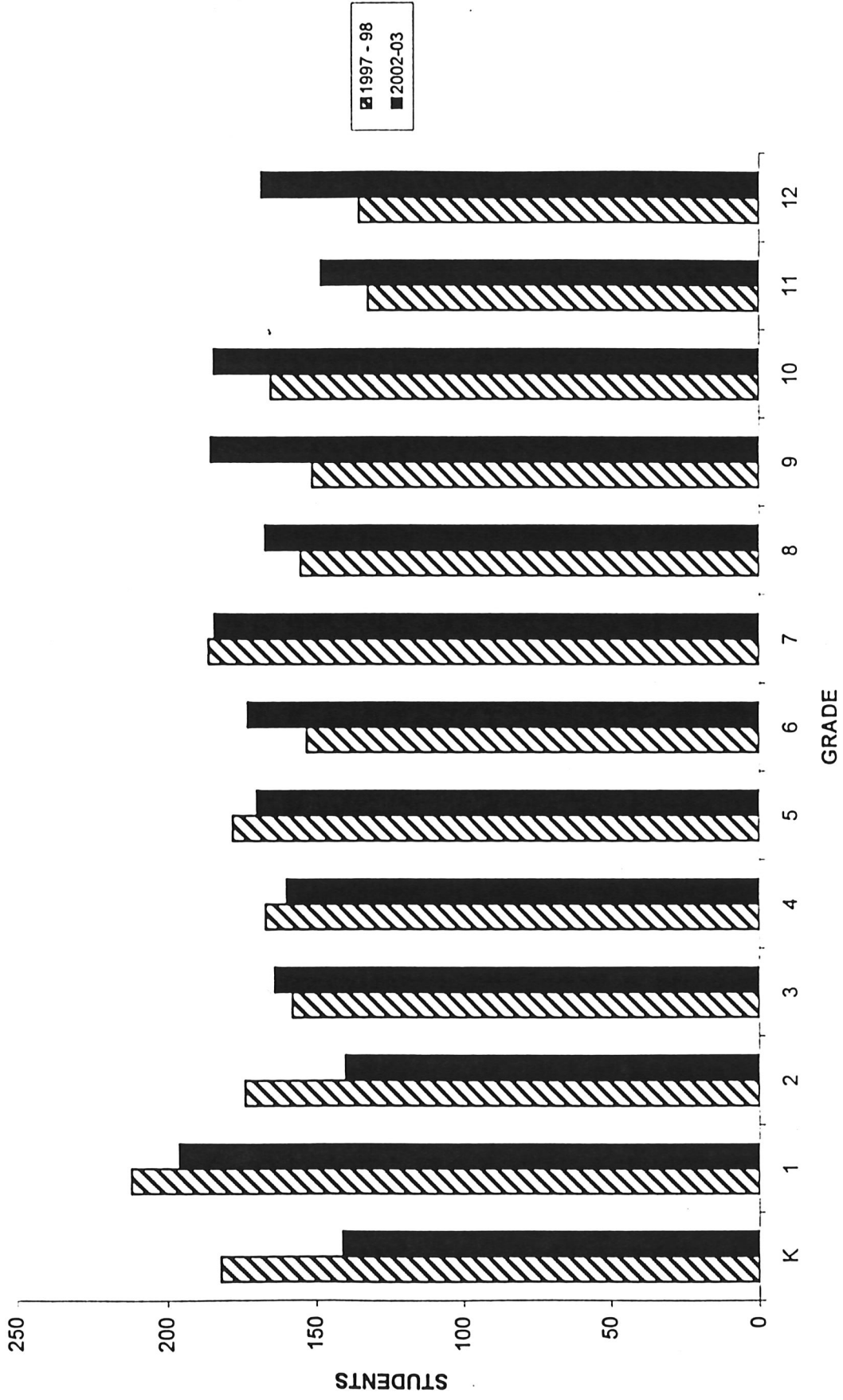
Note: Totals do not include ungraded Handicapped, Special Education, or BOCES students.  
Numbers in **BOLD** are projected.

| TABLE 9<br>AGGREGATE ENROLLMENT PROJECTIONS<br>MARCELLUS CENTRAL SCHOOL DISTRICT<br>THROUGH 2002 - 2003 |         |              |              |              |              |              |
|---|---------|--------------|--------------|--------------|--------------|--------------|
| Grade   | 1997-98 | 1998-99      | 1999-00      | 2000-01      | 2001-02      | 2002-03      |
| K - 3   | 726     | <b>727</b>   | <b>713</b>   | <b>682</b>   | <b>666</b>   | <b>641</b>   |
| 4 - 8   | 839     | <b>852</b>   | <b>851</b>   | <b>872</b>   | <b>863</b>   | <b>854</b>   |
| 9 - 12  | 583     | <b>590</b>   | <b>635</b>   | <b>627</b>   | <b>669</b>   | <b>685</b>   |
| Total   | 2,148   | <b>2,169</b> | <b>2,199</b> | <b>2,181</b> | <b>2,198</b> | <b>2,180</b> |

Note: Totals do not include ungraded Handicapped, Special Education, or BOCES students.  
Numbers in **BOLD** are projected.

Figure 2.

MARCELLUS CENTRAL SCHOOL DISTRICT ENROLLMENT 1997 AND 2002



## **TECHNICAL APPENDICES**

The following tables provide additional quantitative components used in the preparation of the enrollment projections for the Marcellus Central School District. Prior to the preparation of the final set of projections, a qualitative evaluation of all projection sets found in this report was conducted.



## APPENDIX A

## SCHOOL DISTRICT DEMOGRAPHIC PROFILE

Page 1.

## DISTRICT SUMMARY PROFILE FOR MARCELLUS CENTRAL SCHOOL

State: 36 District: 18480 Grade Range: KG-12

|                                   |           |       |   |       |       |
|-----------------------------------|-----------|-------|---|-------|-------|
| Total Population                  | 10,808    | 100.0 | Children (Total Relevant)               | 2,545 | 100.0 |
| White                             | 10,738    | 99.4  | Male                                    | 1,283 | 50.4  |
| Black                             | 27        | 0.2   | Female                                  | 1,262 | 49.6  |
| American Indian, Eskimo, or Aleut | 24        | 0.2   |   |       |       |
| Asian or Pacific Islander         | 19        | 0.2   | Children by Race                        |       |       |
| Other race                        | 0         | 0.0   | White                                   | 2,524 | 99.2  |
| Persons of Hispanic Origin        | 63        | 0.6   | Black                                   | 11    | 0.4   |
|                                   |           |       | American Indian, Eskimo, or Aleut       | 0     | 0.0   |
| Persons in Households             | 10,808    | 100.0 | Asian or Pacific Islander               | 10    | 0.4   |
| Persons in Non-Household Settings | 0         | 0.0   | Other race                              | 0     | 0.0   |
|                                   |           |       | Children of Hispanic Origin             | 28    | 1.1   |
| Persons in Poverty in 1989        | 381       | 3.5   |   |       |       |
| Total Housing Units               | 4,316     | 100.0 | Children by Enrollment Status           |       |       |
| Owner Occupied                    | 3,231     | 74.9  | Enrolled                                | 2,241 | 88.1  |
| Renter Occupied                   | 634       | 14.7  | Public                                  | 2,048 | 80.5  |
| Vacant                            | 451       | 10.4  | Private                                 | 193   | 7.6   |
|                                   |           |       | Not Enrolled                            | 304   | 11.9  |
| Total Households                  | 3,865     | 100.0 | Children by Urban/Rural                 |       |       |
| Urban                             | 173       | 4.5   | Urban                                   | 102   | 4.0   |
| Rural                             | 3,692     | 95.5  | Rural                                   | 2,443 | 96.0  |
|                                   |           |       | Children in Non-Household Settings      | 0     | 0.0   |
| Median Household Income           | \$ 38,376 |       | At Risk Pre-School Children             | 9     | 0.4   |
| Per Capita Income in 1989         | \$ 16,721 |       |   |       |       |
| Employment Status                 |           |       | At Risk Children, Ages 6-19             | 24    | 0.9   |
| (Persons 16 years & over)         |           |       | Children in Poverty, 1989               | 172   | 6.8   |
| Total Persons 16 years & over     | 8,104     | 100.0 | Dropouts                                | 21    |       |
| In labor force:                   |           |       | Dropout Rate                            | 3.63  |       |
| In Armed Forces                   | 7         | 0.1   |   |       |       |
| Civilian:                         |           |       | Children by Language Spoken at Home     |       |       |
| Employed                          | 5,483     | 67.7  | (Relevant Children 5 yrs & over):       | 2,250 | 100.0 |
| Unemployed                        | 218       | 2.7   | Speak only English                      | 2,195 | 97.6  |
| Not in labor force                | 2,396     | 29.6  | Spanish or Spanish Creole               | 49    | 2.2   |
|                                   |           |       | Other                                   | 6     | 0.3   |
| Educational Attainment            |           |       | Children by Language Spoken at home     |       |       |
| (Persons 20 years & over)         |           |       | and Ability to Speak English            |       |       |
| Total Persons, 20 years and over  | 7,542     | 100.0 | (Relevant Children 5 yrs & over):       | 2,250 | 100.0 |
| 12th grade or less, no diploma    | 831       | 11.0  | Speak only English                      | 2,195 | 97.6  |
| High school graduate              | 2,203     | 29.3  | Speak Spanish:                          |       |       |
| Some college, no degree           | 2,373     | 31.5  | Speak English "very well"               | 37    | 1.6   |
| Bachelor's or higher degree       | 2,130     | 28.2  | Speak English "well"                    | 0     | 0.0   |
|                                   |           |       | Speak English not well/not              | 12    | 0.5   |
|                                   |           |       | Speak Asian or Pacific Island language: |       |       |
|                                   |           |       | Speak English "very well"               | 0     | 0.0   |
|                                   |           |       | Speak English "well"                    | 0     | 0.0   |
|                                   |           |       | Speak English not well/not              | 0     | 0.0   |
|                                   |           |       | Speak other language:                   |       |       |
|                                   |           |       | Speak English "very well"               | 3     | 0.1   |
|                                   |           |       | Speak English "well"                    | 0     | 0.0   |
|                                   |           |       | Speak English not well/not              | 3     | 0.1   |

42-11-01-06-0000

MARCELLUS CSD  
C/O-SUPRTNDNT-PAUL E BRISTOL  
REED PKY  
MARCELLUS N Y 13108

## DISTRICT DETAILED PROFILE FOR MARCELLUS CENTRAL SCHOOL

State: 36 District: 18480 Grade Range: KG-12

|  |           |       |  |       |       |
|--|-----------|-------|--|-------|-------|
| Total Housing Units                          | 4,316     | 100.0 | Educational Attainment                   |       |       |
| Owner Occupied                               | 3,231     | 74.9  | (Persons 20 years and over)              |       |       |
| Median Value                                 | \$ 93,364 |       | Total Persons, 20 years and over         | 7,542 | 100.0 |
| Renter Occupied                              | 634       | 14.7  | 12th grade or less, no diploma:          |       |       |
| Median Gross Rent                            | \$ 441    |       | Male                                     | 438   | 5.8   |
| Unweighted Sample Count                      | 1,141     | 26.4  | Female                                   | 393   | 5.2   |
| 100-Percent Count                            | 4,297     | 99.6  | High school graduate:                    |       |       |
|  |           |       | Male                                     | 955   | 12.7  |
| Total Persons                                | 10,808    | 100.0 | Female                                   | 1,253 | 16.6  |
| Unweighted Sample Count of Persons           | 2,725     | 25.2  | Some college, no degree:                 |       |       |
| 100-Percent Count of Persons                 | 10,741    |       | Male                                     | 1,127 | 14.9  |
|  |           |       | Female                                   | 1,246 | 16.5  |
| Total Households                             | 3,865     | 100.0 | Bachelor's or higher degree:             |       |       |
| Urban, Inside Urbanized Areas                | 173       | 4.5   | Male                                     | 1,122 | 14.9  |
| Urban, Outside Urbanized Areas               | 0         | 0.0   | Female                                   | 1,008 | 13.4  |
| Rural, Farm                                  | 44        | 1.1   |  |       |       |
| Rural, Nonfarm                               | 3,648     | 94.4  | Children                                 |       |       |
| Metro-In Central City                        | 0         | 0.0   | (Total Relevant):                        | 2,545 | 100.0 |
| Metro-Not in Central City, Urban             | 173       | 4.5   | Male                                     | 1,283 | 50.4  |
| Metro-Not in Central City, Rural             | 3,692     | 95.5  | Female                                   | 1,262 | 49.6  |
| Outside Metro, Urban                         | 0         | 0.0   |  |       |       |
| Outside Metro, Rural                         | 0         | 0.0   | Children by Race                         |       |       |
| Median Household Income                      | \$ 38,376 |       | (Total Relevant)                         |       |       |
| Per Capita Income in 1989                    | \$ 16,721 |       | White                                    | 2,524 | 99.2  |
|  |           |       | Black                                    | 11    | 0.4   |
| Households with Children < 18 Yrs            | 1,561     | 100.0 | American Indian, Eskimo, or Aleut        | 0     | 0.0   |
| 1-person                                     | 0         | 0.0   | Asian or Pacific Islander                | 10    | 0.4   |
| 2-person                                     | 55        | 3.5   | Other race                               | 0     | 0.0   |
| 3-person                                     | 440       | 28.2  | Children of Hispanic Origin              | 29    | 1.1   |
| 4-person                                     | 591       | 37.9  | (Total Relevant)                         |       |       |
| 5-person                                     | 345       | 22.1  | Children by Race                         |       |       |
| 6-person                                     | 113       | 7.2   | (Total Relevant - Enrolled):             | 2,241 | 89.1  |
| 7 or more persons                            | 17        | 1.1   | White                                    | 2,220 | 87.2  |
| Persons by Race                              | 10,808    | 100.0 | Black                                    | 11    | 0.4   |
| White  | 10,738    | 99.4  | American Indian, Eskimo, or Aleut        | 0     | 0.0   |
| Black  | 27        | 0.2   | Asian or Pacific Islander                | 10    | 0.4   |
| American Indian, Eskimo, or Aleut            | 24        | 0.2   | Other race                               | 0     | 0.0   |
| Asian or Pacific Islander                    | 19        | 0.2   | Children of Hispanic Origin              | 29    | 1.1   |
| Other race                                   | 0         | 0.0   | (Total Relevant - Enrolled)              |       |       |
| Persons of Hispanic Origin                   | 63        | 0.6   | Children by Race                         |       |       |
| Persons in Group Quarters                    | 0         | 0.0   | (Total Relevant-Enrolled Public):        | 2,048 | 83.5  |
| Institutionalized persons:                   |           |       | White                                    | 2,027 | 79.6  |
| Correctional institutions                    | 0         | 0.0   | Black                                    | 11    | 0.4   |
| Nursing homes                                | 0         | 0.0   | American Indian, Eskimo, or Aleut        | 0     | 0.0   |
| Mental (Psychiatric) hospitals               | 0         | 0.0   | Asian or Pacific Islander                | 10    | 0.4   |
| Juvenile institutions                        | 0         | 0.0   | Other race                               | 0     | 0.0   |
| Other institutions                           | 0         | 0.0   | Children of Hispanic Origin              | 29    | 1.1   |
| Other persons in group quarters:             |           |       | (Total Relevant - Enrolled Public)       |       |       |
| College dormitories                          | 0         | 0.0   | Children by Race                         |       |       |
| Military quarters                            | 0         | 0.0   | (Total Relevant-Enrolled Private):       | 193   | 7.6   |
| Emergency shelters for homeless              | 0         | 0.0   | White                                    | 193   | 7.6   |
| Visible in street locations                  | 0         | 0.0   | Black                                    | 0     | 0.0   |
| Other noninstitutional                       | 0         | 0.0   | American Indian, Eskimo, or Aleut        | 0     | 0.0   |
|  |           |       | Asian or Pacific Islander                | 0     | 0.0   |
| Households with                              | 3,865     | 100.0 | Other race                               | 0     | 0.0   |
| Public Assistance Income in 1989             | 97        | 2.5   | Children of Hispanic Origin              | 0     | 0.0   |
| No Public Assistance Income 1989             | 3,719     | 96.2  | (Total Relevant - Enrolled Private)      |       |       |
| Employment Status (Persons 16 yrs & over)    |           |       | Children by Race                         |       |       |
| Total Persons 16 Years & Over                | 8,104     | 100.0 | (Total Relevant - Not Enrolled):         | 304   | 11.9  |
| Male:  |           |       | White                                    | 304   | 11.9  |
| In labor force:                              |           |       | Black                                    | 0     | 0.0   |
| In Armed Forces                              | 5         | 0.1   | American Indian, Eskimo, or Aleut        | 0     | 0.0   |
| Civilian:                                    |           |       | Asian or Pacific Islander                | 0     | 0.0   |
| Employed                                     | 2,975     | 36.7  | Other race                               | 0     | 0.0   |
| Unemployed                                   | 141       | 1.7   | Children of Hispanic Origin              | 0     | 0.0   |
| Not in labor force                           | 818       | 10.1  | (Total Relevant - Not Enrolled)          |       |       |
| Female:                                      |           |       | Children by Urban/Rural (Total Relevant) |       |       |
| In labor force:                              |           |       | Urban:                                   | 102   | 100.0 |
| In Armed Forces                              | 2         | 0.0   | Inside urbanized area:                   |       |       |
| Civilian:                                    |           |       | Male                                     | 72    | 70.6  |
| Employed                                     | 2,508     | 30.9  | Female                                   | 30    | 29.4  |
| Unemployed                                   | 77        | 1.0   | Outside urbanized area:                  |       |       |
| Not in labor force                           | 1,578     | 19.5  | Male                                     | 0     | 0.0   |
|  |           |       | Female                                   | 0     | 0.0   |
| Poverty Status in 1989                       |           |       | Rural:                                   | 2,443 | 100.0 |
| (Persons for whom poverty status determined) |           |       | Farm:                                    |       |       |
| Total Persons                                | 10,792    | 100.0 | Male                                     | 11    | 0.5   |
| Income in 1989 above poverty level:          |           |       | Female                                   | 8     | 0.3   |
| Male   | 5,146     | 47.7  | Nonfarm:                                 |       |       |
| Female                                       | 5,265     | 48.8  | Male                                     | 1,200 | 49.1  |
| Income in 1989 below poverty level:          |           |       | Female                                   | 1,224 | 50.1  |
| Male   | 202       | 1.9   |  |       |       |
| Female                                       | 179       | 1.7   |  |       |       |

## DISTRICT DETAILED PROFILE FOR MARCELLUS CENTRAL SCHOOL

State: 36 District: 18480 Grade Range: KG-12

|   |    |       |
|---|----|-------|
| At Risk Pre-School Children<br>(Children less than 6 years living with<br>mother, mother not high school graduate<br>and single, divorced, or separated,<br>and is below poverty level in 1989) | 9  | 100.0 |
| Child less than 4 years:  |    |       |
| Child enrolled in school:   |    |       |
| Mother speaks only English  | 0  | 0.0   |
| Mother speaks other language:   |    |       |
| Speak English "very well"   | 0  | 0.0   |
| Speak English "well"  | 0  | 0.0   |
| Speak English not well/not  | 0  | 0.0   |
| Child not enrolled in school:   |    |       |
| Mother speaks only English  | 0  | 0.0   |
| Mother speaks other language:   |    |       |
| Speak English "very well"   | 0  | 0.0   |
| Speak English "well"  | 0  | 0.0   |
| Speak English not well/not  | 0  | 0.0   |
| Child 4 or 5 years:   |    |       |
| Child enrolled in school:   |    |       |
| Mother speaks only English  | 3  | 33.3  |
| Mother speaks other language:   |    |       |
| Speak English "very well"   | 0  | 0.0   |
| Speak English "well"  | 0  | 0.0   |
| Speak English not well/not  | 0  | 0.0   |
| Child not enrolled in school:   |    |       |
| Mother speaks only English  | 6  | 66.7  |
| Mother speaks other language:   |    |       |
| Speak English "very well"   | 0  | 0.0   |
| Speak English "well"  | 0  | 0.0   |
| Speak English not well/not  | 0  | 0.0   |
| At Risk School Age Children<br>(Children 6 to 19 years living with<br>mother, mother not high school graduate<br>and single, divorced, or separated,<br>and is below poverty level in 1989)     | 24 | 100.0 |
| Child 6 to 19 years:  |    |       |
| Child enrolled in school:   |    |       |
| Mother speaks only English  | 24 | 100.0 |
| Mother speaks other language:   |    |       |
| Speak English "very well"   | 0  | 0.0   |
| Speak English "well"  | 0  | 0.0   |
| Speak English not well/not  | 0  | 0.0   |
| Child not enrolled in school:   |    |       |
| Mother speaks only English  | 0  | 0.0   |
| Mother speaks other language:   |    |       |
| Speak English "very well"   | 0  | 0.0   |
| Speak English "well"  | 0  | 0.0   |
| Speak English not well/not  | 0  | 0.0   |

|   |       |       |
|---|-------|-------|
| Total Persons, less than 20 years   | 3,266 |       |
| Persons for whom poverty status is<br>determined, less than 20 years:   | 3,250 | 100.0 |
| Under 1 year  | 127   | 3.9   |
| 1 year  | 223   | 6.9   |
| 2 years   | 195   | 6.0   |
| 3 years   | 147   | 4.5   |
| 4 years   | 146   | 4.5   |
| 5 years   | 214   | 6.6   |
| 6 years   | 171   | 5.3   |
| 7 years   | 169   | 5.2   |
| 8 years   | 194   | 6.0   |
| 9 years   | 151   | 4.6   |
| 10 years  | 208   | 6.4   |
| 11 years  | 111   | 3.4   |
| 12 years  | 123   | 3.8   |
| 13 years  | 187   | 5.8   |
| 14 years  | 135   | 4.2   |
| 15 years  | 187   | 5.8   |
| 16 years  | 125   | 3.8   |
| 17 years  | 134   | 4.1   |
| 18 years  | 163   | 5.0   |
| 19 years  | 140   | 4.3   |
| Persons in Poverty Universe in 1989<br>(Persons for whom poverty status is<br>determined, less than 20 years) | 172   | 100.0 |
| Under 1 year  | 8     | 4.7   |
| 1 year  | 2     | 1.2   |
| 2 years   | 11    | 6.4   |
| 3 years   | 2     | 1.2   |
| 4 years   | 5     | 2.9   |
| 5 years   | 22    | 12.8  |
| 6 years   | 15    | 8.7   |
| 7 years   | 4     | 2.3   |
| 8 years   | 13    | 7.6   |
| 9 years   | 14    | 8.1   |
| 10 years  | 10    | 5.8   |
| 11 years  | 0     | 0.0   |
| 12 years  | 2     | 1.2   |
| 13 years  | 4     | 2.3   |
| 14 years  | 4     | 2.3   |
| 15 years  | 13    | 7.6   |
| 16 years  | 3     | 1.7   |
| 17 years  | 3     | 1.7   |
| 18 years  | 21    | 12.2  |
| 19 years  | 16    | 9.3   |
| Dropout Analysis  |       |       |
| Persons 16-19 years in Households<br>Not Enrolled in School and<br>Not High School Graduate:                  | 21    |       |
| Persons 14-17 years in Households   | 579   |       |
| Persons 14-17 years in Grp Girs   | 0     |       |
| Dropout Rate  | 3.63  |       |

## DISTRICT DETAILED PROFILE FOR MARCELLUS CENTRAL SCHOOL

State: 36 District: 18480 Grade Range: KG-12

## Children by Language Spoken at Home

|                                   |       |       |
|-----------------------------------|-------|-------|
| (Relevant Children 5 yrs & over): | 2,250 | 100.0 |
| Speak only English                | 2,195 | 97.6  |
| German                            | 0     | 0.0   |
| Yiddish                           | 0     | 0.0   |
| Other West Germanic language      | 0     | 0.0   |
| Scandinavian                      | 0     | 0.0   |
| Greek                             | 0     | 0.0   |
| Indic                             | 0     | 0.0   |
| Italian                           | 0     | 0.0   |
| French or French Creole           | 3     | 0.1   |
| Portuguese or Portuguese Creole   | 0     | 0.0   |
| Spanish or Spanish Creole         | 49    | 2.2   |
| Polish                            | 0     | 0.0   |
| Russian                           | 0     | 0.0   |
| South Slavic                      | 0     | 0.0   |
| Other Slavic language             | 0     | 0.0   |
| Other Indo-European language      | 0     | 0.0   |
| Arabic                            | 3     | 0.1   |
| Tagalog                           | 0     | 0.0   |
| Chinese                           | 0     | 0.0   |
| Hungarian                         | 0     | 0.0   |
| Japanese                          | 0     | 0.0   |
| Mon-Khmer                         | 0     | 0.0   |
| Korean                            | 0     | 0.0   |
| Native North American languages   | 0     | 0.0   |
| Vietnamese                        | 0     | 0.0   |
| Other and unspecified languages   | 0     | 0.0   |

## Children by Language Spoken at Home and Ability to Speak English

|                                   |       |       |
|-----------------------------------|-------|-------|
| (Relevant Children 5 yrs & over): | 2,250 | 100.0 |
| Male:                             |       |       |
| Speak only English                | 1,133 | 50.4  |
| Speak Spanish:                    |       |       |
| Speak English "very well"         | 12    | 0.5   |
| Speak English "well"              | 0     | 0.0   |
| Speak English not well/not        | 3     | 0.1   |
| Speak Asian or Pac Isl language:  |       |       |
| Speak English "very well"         | 0     | 0.0   |
| Speak English "well"              | 0     | 0.0   |
| Speak English not well/not        | 0     | 0.0   |
| Speak other language:             |       |       |
| Speak English "very well"         | 0     | 0.0   |
| Speak English "well"              | 0     | 0.0   |
| Speak English not well/not        | 3     | 0.1   |
| Female:                           |       |       |
| Speak only English                | 1,062 | 47.2  |
| Speak Spanish:                    |       |       |
| Speak English "very well"         | 25    | 1.1   |
| Speak English "well"              | 0     | 0.0   |
| Speak English not well/not        | 9     | 0.4   |
| Speak Asian or Pac Isl language:  |       |       |
| Speak English "very well"         | 0     | 0.0   |
| Speak English "well"              | 0     | 0.0   |
| Speak English not well/not        | 0     | 0.0   |
| Speak other language:             |       |       |
| Speak English "very well"         | 3     | 0.1   |
| Speak English "well"              | 0     | 0.0   |
| Speak English not well/not        | 0     | 0.0   |

## Children in Group Quarters

|                                  |   |     |
|----------------------------------|---|-----|
| (Total Relevant)                 | 0 | 0.0 |
| Institutionalized persons:       |   |     |
| Correctional institutions        | 0 | 0.0 |
| Nursing homes                    | 0 | 0.0 |
| Mental (Psychiatric) hospitals   | 0 | 0.0 |
| Juvenile institutions            | 0 | 0.0 |
| Other institutions               | 0 | 0.0 |
| Other persons in group quarters: |   |     |
| College dormitories              | 0 | 0.0 |
| Military quarters                | 0 | 0.0 |
| Emergency shelters for homeless  | 0 | 0.0 |
| Visible in street locations      | 0 | 0.0 |
| Other noninstitutional           | 0 | 0.0 |

## Children by Poverty Status in 1989

|                                     |       |       |
|-------------------------------------|-------|-------|
| (Total Relevant)                    |       |       |
| Total Relevant Children             | 2,529 | 100.0 |
| Income in 1989 above poverty level: |       |       |
| Male                                | 1,193 | 47.2  |
| Female                              | 1,203 | 47.6  |
| Income in 1989 below poverty level: |       |       |
| Male                                | 81    | 3.2   |
| Female                              | 52    | 2.1   |

## Children by Race by Sex by

|                                    |       |       |
|------------------------------------|-------|-------|
| Hispanic Origin (Total Relevant)   | 2,545 | 100.0 |
| Total Relevant Children            |       |       |
| White:                             |       |       |
| Male:                              |       |       |
| Not of Hispanic Origin             | 1,256 | 49.4  |
| Hispanic Origin                    | 8     | 0.3   |
| Female:                            |       |       |
| Not of Hispanic Origin             | 1,240 | 48.7  |
| Hispanic Origin                    | 20    | 0.8   |
| Black:                             |       |       |
| Male:                              |       |       |
| Not of Hispanic Origin             | 9     | 0.4   |
| Hispanic Origin                    | 0     | 0.0   |
| Female:                            |       |       |
| Not of Hispanic Origin             | 2     | 0.1   |
| Hispanic Origin                    | 0     | 0.0   |
| American Indian, Eskimo, or Aleut: |       |       |
| Male:                              |       |       |
| Not of Hispanic Origin             | 0     | 0.0   |
| Hispanic Origin                    | 0     | 0.0   |
| Female:                            |       |       |
| Not of Hispanic Origin             | 0     | 0.0   |
| Hispanic Origin                    | 0     | 0.0   |
| Asian or Pacific Islander:         |       |       |
| Male:                              |       |       |
| Not of Hispanic Origin             | 10    | 0.4   |
| Hispanic Origin                    | 0     | 0.0   |
| Female:                            |       |       |
| Not of Hispanic Origin             | 0     | 0.0   |
| Hispanic Origin                    | 0     | 0.0   |
| Other race:                        |       |       |
| Male:                              |       |       |
| Not of Hispanic Origin             | 0     | 0.0   |
| Hispanic Origin                    | 0     | 0.0   |
| Female:                            |       |       |
| Not of Hispanic Origin             | 0     | 0.0   |
| Hispanic Origin                    | 0     | 0.0   |

## Children by Household Type and Relationship by Sex (Total Relevant)

|                          |       |       |
|--------------------------|-------|-------|
| Total Relevant Children  | 2,545 | 100.0 |
| In family households:    |       |       |
| Householder or spouse:   |       |       |
| Male                     | 0     | 0.0   |
| Female                   | 0     | 0.0   |
| Child:                   |       |       |
| Natural-born or adopted: |       |       |
| Male                     | 1,213 | 47.7  |
| Female                   | 1,187 | 46.6  |
| Step:                    |       |       |
| Male                     | 26    | 1.0   |
| Female                   | 29    | 1.1   |
| Grandchild:              |       |       |
| Male                     | 29    | 1.1   |
| Female                   | 29    | 1.1   |
| Other relatives:         |       |       |
| Male                     | 0     | 0.0   |
| Female                   | 0     | 0.0   |
| Nonrelatives:            |       |       |
| Male                     | 12    | 0.5   |
| Female                   | 4     | 0.2   |
| In nonfamily households: |       |       |
| Householder:             |       |       |
| Male                     | 3     | 0.1   |
| Female                   | 0     | 0.0   |
| Nonrelatives:            |       |       |
| Male                     | 0     | 0.0   |
| Female                   | 13    | 0.5   |
| In group quarters:       |       |       |
| Male                     | 0     | 0.0   |
| Female                   | 0     | 0.0   |

## APPENDIX B

### TOWN POPULATION COMPARISONS MARCELLUS CENTRAL SCHOOL DISTRICT

| Town               | % Change           |                    |               |                  |                  | % Change         |                  |                  |                  |               |
|--------------------|--------------------|--------------------|---------------|------------------|------------------|------------------|------------------|------------------|------------------|---------------|
|                    | 1980<br>Population | 1990<br>Population | 1980-<br>1990 | 1991<br>Estimate | 1992<br>Estimate | 1993<br>Estimate | 1994<br>Estimate | 1995<br>Estimate | 1996<br>Estimate | 1990-<br>1996 |
| Camillus, Town     | 24333              | 23,625             | -2.91         | 23,975           | 24,159           | 14,303           | 24,255           | 24,196           | 24,089           | 1.96          |
| Marcellus, Town    | 6180               | 6,465              | 4.61          | 6,532            | 6,570            | 6,593            | 6,566            | 6,581            | 6,561            | 1.48          |
| Marcellus, Village | 1870               | 1,840              | -1.60         | 1,833            | 1,833            | 1,825            | 1,804            | 1,829            | 1,828            | -0.65         |
| Onondaga, Town     | 17824              | 18,396             | 3.21          | 18,829           | 19,133           | 19,370           | 19,452           | 19,515           | 19,459           | 5.78          |
| Otisco, Town       | 2112               | 2,255              | 6.77          | 2,248            | 2,255            | 2,270            | 2,270            | 2,269            | 2,263            | 0.35          |
| Skaneateles, Town  | 7795               | 7,526              | -3.45         | 7,596            | 7,627            | 7,648            | 7,611            | 7,580            | 7,534            | 0.11          |
| Spafford, Town     | 1596               | 1,675              | 4.95          | 1,680            | 1,686            | 1,686            | 1,677            | 1,672            | 1,672            | -0.18         |
| Onondaga County    | 463920             | 468,973            | 1.09          | 472,338          | 473,844          | 474,762          | 472,318          | 469,540          | 466,675          | -0.49         |

Source: 1980 and 1990 Census of Population and Housing.

Annual Population Estimates, 1990 To 1996 For NYS Governmental Units, U.S. Census Bureau and NYS Data Center, 1997.

Note: Village of Marcellus total included in the Town of Marcellus total.

# APPENDIX C

## MARCELLUS CENTRAL SCHOOL DISTRICT

### GRADE TO GRADE SINGLE FAMILY HOUSING MULTIPLIERS

1990 - 91 THROUGH 1997 - 98

| Grade | 1990-91 | 1991-92 | 1992-93 | 1993-94 | 1994-95 | 1995-96 | 1996-97 | 1997-98 |
|-------|---------|---------|---------|---------|---------|---------|---------|---------|
| K     | .05008  | .04518  | .04787  | .04935  | .04282  | .04838  | .04622  | .04608  |
| 1     | .05278  | .05945  | .05200  | .05257  | .05787  | .04966  | .05460  | .05368  |
| 2     | .03599  | .04161  | .04609  | .04117  | .04050  | .04380  | .03936  | .04406  |
| 3     | .04499  | .03507  | .03782  | .04702  | .03935  | .04202  | .04114  | .04001  |
| 4     | .03599  | .04429  | .03457  | .04117  | .04484  | .03845  | .04444  | .04229  |
| 5     | .03689  | .03567  | .04550  | .03183  | .04166  | .04278  | .03886  | .04507  |
| 6     | .03749  | .03686  | .03723  | .04351  | .03153  | .04074  | .04343  | .03874  |
| 7     | .03839  | .03864  | .03900  | .03796  | .04716  | .03387  | .04063  | .04710  |
| 8     | .03629  | .04072  | .03871  | .03884  | .03559  | .04558  | .03479  | .03925  |
| 9     | .04739  | .04310  | .03930  | .03942  | .04195  | .03896  | .04419  | .03824  |
| 10    | .03809  | .03983  | .03546  | .04147  | .03732  | .03642  | .03581  | .04178  |
| 11    | .03329  | .03240  | .03871  | .03475  | .03559  | .03438  | .03555  | .03342  |
| 12    | .03149  | .03091  | .03486  | .03855  | .03269  | .03285  | .03327  | .003418 |

## APPENDIX D

### PROJECTED SINGLE-FAMILY HOUSING MULTIPLIERS BY GRADE MARCELLUS CENTRAL SCHOOL DISTRICT

| GRADE | 1998-99 | 1999-00 | 2000-01 | 2001-02 | 2002-03 |
|-------|---------|---------|---------|---------|---------|
| K     | 0.0415  | 0.0424  | 0.0367  | 0.0411  | 0.0341  |
| 1     | 0.0518  | 0.0473  | 0.0494  | 0.0423  | 0.0475  |
| 2     | 0.0420  | 0.0410  | 0.0382  | 0.0391  | 0.0343  |
| 3     | 0.0430  | 0.0415  | 0.0414  | 0.0377  | 0.0394  |
| 4     | 0.0396  | 0.0432  | 0.0426  | 0.0418  | 0.0388  |
| 5     | 0.0410  | 0.0390  | 0.0433  | 0.0420  | 0.0418  |
| 6     | 0.0440  | 0.0405  | 0.0394  | 0.0430  | 0.0424  |
| 7     | 0.0390  | 0.0451  | 0.0426  | 0.0408  | 0.0451  |
| 8     | 0.0457  | 0.0386  | 0.0455  | 0.0420  | 0.0410  |
| 9     | 0.0413  | 0.0485  | 0.0418  | 0.0483  | 0.0454  |
| 10    | 0.0343  | 0.0373  | 0.0453  | 0.0382  | 0.0451  |
| 11    | 0.0379  | 0.0317  | 0.0352  | 0.0420  | 0.0363  |
| 12    | 0.0315  | 0.0364  | 0.0311  | 0.0340  | 0.0412  |

## APPENDIX E

### GRADE TO GRADE COHORT SURVIVAL RATIOS

The following grade to grade survival ratios were used in the preparation of School District projections. An explanation of the birth to Kindergarten survival ratio can be found in Appendix F.

|                         |        |
|-------------------------|--------|
| Kindergarten to Grade 1 | 1.1535 |
| Grade 1 to Grade 2      | 0.8020 |
| Grade 2 to Grade 3      | 0.9972 |
| Grade 3 to Grade 4      | 1.0198 |
| Grade 4 to Grade 5      | 0.9948 |
| Grade 5 to Grade 6      | 1.0013 |
| Grade 6 to Grade 7      | 1.0399 |
| Grade 7 to Grade 8      | 0.9965 |
| Grade 8 to Grade 9      | 1.0750 |
| Grade 9 to Grade 10     | 0.9301 |
| Grade 10 to Grade 11    | 0.9473 |
| Grade 11 to Grade 12    | 0.9696 |



## APPENDIX F

### BIRTH TO KINDERGARTEN SURVIVAL RATIO

As stated in the text on page 6, a six-year survival ratio appears to be a good indicator of future Kindergarten enrollment for the Marcellus Central School District. A birth to Kindergarten survival ratio of .9463 was used in the generation of the projection figures. The resulting number of students was coupled with the anticipated growth from new residential construction activity to generate final enrollment projections through the 2002–03 school year.