



STUDENT POTENTIAL ANALYSIS REPORT

OLENTANGY LOCAL SCHOOL DISTRICT

SEPTEMBER 27, 2023



TABLE OF CONTENTS

SECTION	PAGE
ACKNOWLEDGEMENTS	2
EXECUTIVE SUMMARY	3
2023-24 ATTENDANCE BOUNDARY MAPS	6
EXISTING LAND USE	9
YIELD MODEL	11
HOUSING	12
STUDENT POTENTIAL	32
POTENTIAL ENROLLMENT BY BOUNDARY	44
CONCLUSION	49

ACKNOWLEDGMENTS

On behalf of Cooperative Strategies, we would like to extend our appreciation to the Olentangy Local School District for the opportunity to assist them in developing this Student Potential Analysis Report. As a planning team, we hope that this document will serve the Olentangy Local School District for years to come.

COOPERATIVE STRATEGIES

Ann Hoffsis, REFP, Chief Operating Officer

Karen Jackson, Senior Director

Stephanie Frank, Associate

4675 Lakehurst Court, Suite 200

Dublin, OH 43016

P. 614.798.8828

www.coopstrategies.com

EXECUTIVE SUMMARY

Introduction

Cooperative Strategies was contracted to study student demographics and develop a student potential analysis of the Olentangy Local School District. This summary is the result of collection, review, and analysis of student demographics and housing information for the Olentangy Local School District.

The purpose of this analysis is to determine the potential growth and/or decline for existing subdivisions, planned housing developments, and undeveloped land, and the impact it has on the Olentangy Local School District student population. By providing this student potential analysis to the District, it will be better equipped to make decisions regarding future enrollment. It is important to note that this report uses a different methodology than an enrollment projection study, therefore the forecasts will not match.

Methodology

To identify areas of the District that are decreasing and increasing in student population, a student yield (ratio = # of students / # of housing units) analysis was completed based on the age of subdivided single-family homes within the District. These yields were calculated using 2023-24 student data provided by the Olentangy Local School District as well as parcel and address point data provided by the Delaware and Franklin county auditors. The table on the following page illustrates and cross-references the yield data. These yields were then applied to a timeline based on the current housing stock data. This yield timeline, or yield model, was then used to “age-out” any existing, planned, and future housing.

Findings

The student yields fluctuate in a predictable pattern. This trend has been observed as a 35-year cycle of first increasing and then decreasing student output by housing unit. Based on land classified within the District, there are 7,275 acres of land that can be developed into residential housing. This land includes tracts greater than 10 acres that are zoned for residential or agricultural use, as this is typically the land that is sold for the purpose of housing development. Nearly 2,600 acres of this land has been identified as having a high potential for development in the short term. This land is considered high potential due to its proximity to sewer and water infrastructure. When the yield model was applied to this as well as all existing and planned housing, the result is continued enrollment growth.

K-12 Single-Family Yields by Age of Home

The table below shows the K-12 yields for single-family homes by age of home within the District. This data was used as a starting point when creating the yield model. The column on the far right of the table shows the overall yield for each age of home up to 35 years. After age 35, these homes become much less volatile in student yield. Therefore, for the purposes of this study, it can be assumed that homes reach student yield maturity at age 35 and then remain at a constant 0.47 student yield for single-family homes beyond that point. This mature yield is based on the average yield of homes older than 35. All subdivided single-family homes within the District, regardless of age or location, were analyzed for this study.

Source: Olentangy Local Schools, Franklin County & Delaware County auditors

K-12 Student Yields	Assessed Value of Home															TOTAL
	No Data	< 50K	50K - 100K	100K - 150K	150K - 200K	200K - 250K	250K - 300K	300K - 350K	350K - 400K	400K - 450K	450K - 500K	500K - 550K	550K - 600K	600K - 650K	> 650K	
> 35	0.61	0.03	0.63	0.33	0.32	0.33	0.47	0.49	0.54	0.52	0.43	0.25	0.41	0.48	0.49	0.47
35	-	-	-	-	-	0.30	0.60	0.41	0.26	0.64	0.56	0.20	0.87	0.83	0.38	0.46
34	-	-	-	-	1.00	0.71	0.45	0.54	0.35	0.38	0.30	0.54	0.30	0.43	0.78	0.52
33	-	-	-	-	-	0.47	0.58	0.44	0.48	0.46	0.33	0.54	0.50	0.63	0.35	0.47
32	-	-	-	-	-	0.18	0.52	0.52	0.63	0.76	0.55	0.38	0.36	0.30	0.39	0.51
31	-	-	-	-	-	0.22	0.63	0.52	0.49	0.63	0.82	0.50	0.60	0.47	0.61	0.55
30	-	-	-	-	-	0.60	0.46	0.65	0.59	0.87	0.58	0.50	0.63	0.58	0.34	0.59
29	-	-	-	-	-	0.11	0.46	0.54	0.58	0.48	0.68	0.58	0.69	0.41	0.32	0.51
28	-	-	-	-	0.00	0.61	0.57	0.58	0.53	0.35	0.37	1.19	1.09	0.70	0.28	0.58
27	-	-	-	-	0.00	0.43	0.52	0.58	0.50	0.70	0.71	0.75	0.75	0.10	0.62	0.55
26	-	-	-	-	0.00	0.50	0.64	0.56	0.73	0.49	0.41	0.65	1.00	0.17	0.14	0.58
25	-	-	-	-	0.00	0.38	0.57	0.66	0.56	0.55	0.64	0.33	0.85	0.23	0.50	0.58
24	-	-	-	-	0.50	0.44	0.65	0.68	0.72	0.76	0.56	0.67	0.83	0.63	0.46	0.65
23	-	-	-	-	-	0.58	0.74	0.73	0.72	0.66	0.67	0.70	0.53	0.60	0.65	0.71
22	-	-	-	-	0.00	0.50	0.64	0.68	0.79	0.59	0.71	0.56	0.70	0.45	0.55	0.66
21	-	-	-	-	0.50	0.66	0.76	0.77	0.97	0.76	0.67	0.59	0.75	0.68	0.70	0.78
20	-	-	-	-	1.00	0.77	0.83	0.73	0.83	0.87	0.66	0.67	0.71	0.56	0.40	0.76
19	-	-	-	-	-	0.41	0.92	0.93	0.86	0.90	0.90	0.59	0.72	0.67	0.78	0.85
18	-	-	0.00	-	0.50	0.56	0.84	0.89	0.86	0.76	0.91	0.87	0.43	0.76	0.80	0.82
17	-	-	-	-	0.00	0.00	0.92	0.67	0.69	0.97	1.00	1.09	0.76	1.20	0.69	0.85
16	-	-	-	-	0.20	0.38	1.21	0.86	1.10	0.94	1.09	0.67	1.30	0.90	0.45	0.95
15	-	-	-	-	2.00	0.44	1.06	1.10	1.18	1.03	0.91	1.00	1.33	0.86	0.79	1.02
14	-	-	-	-	0.00	0.71	1.41	1.28	1.28	1.20	0.93	1.00	1.08	0.50	1.00	1.15
13	-	-	-	-	0.00	0.00	1.35	1.20	1.22	1.37	1.30	1.30	0.83	1.00	1.50	1.22
12	-	-	-	-	0.00	1.00	1.06	1.07	0.85	1.06	1.24	1.06	0.96	0.62	1.10	1.02
11	-	-	-	-	-	0.67	1.10	1.42	1.25	1.25	1.14	1.22	1.10	1.55	0.96	1.23
10	-	-	-	-	-	1.00	1.18	1.14	1.11	1.26	1.29	1.11	1.45	1.05	0.86	1.18
9	-	-	-	-	-	-	0.75	1.45	1.33	1.39	1.25	1.05	1.31	0.84	1.13	1.25
8	-	-	-	-	-	-	1.12	1.36	1.24	1.12	1.05	1.21	1.07	1.00	0.98	1.16
7	-	-	-	-	-	-	1.25	1.17	1.06	1.26	1.06	0.93	0.72	0.24	1.16	1.07
6	-	-	-	-	-	-	2.00	1.32	1.12	1.07	1.08	1.02	0.81	1.14	1.03	1.09
5	-	-	-	-	-	-	0.00	0.79	0.98	1.05	0.96	0.88	0.92	0.92	1.26	0.97
4	-	-	-	-	-	-	0.18	0.70	1.00	1.07	1.12	0.91	1.32	1.08	0.84	0.98
3	-	-	-	-	-	-	1.00	0.70	0.74	1.02	0.80	1.36	0.74	0.75	0.73	0.87
2	-	0.50	0.68	1.16	0.81	0.75	0.67	0.80	0.83	1.09	0.91	0.63	0.71	1.33	0.43	0.84
1	-	0.40	0.86	-	-	-	-	-	-	-	-	-	-	-	-	0.74
TOTAL	0.61	0.10	0.65	0.64	0.52	0.50	0.73	0.76	0.83	0.91	0.89	0.80	0.83	0.73	0.71	0.78

Single-Family Units by Age of Home

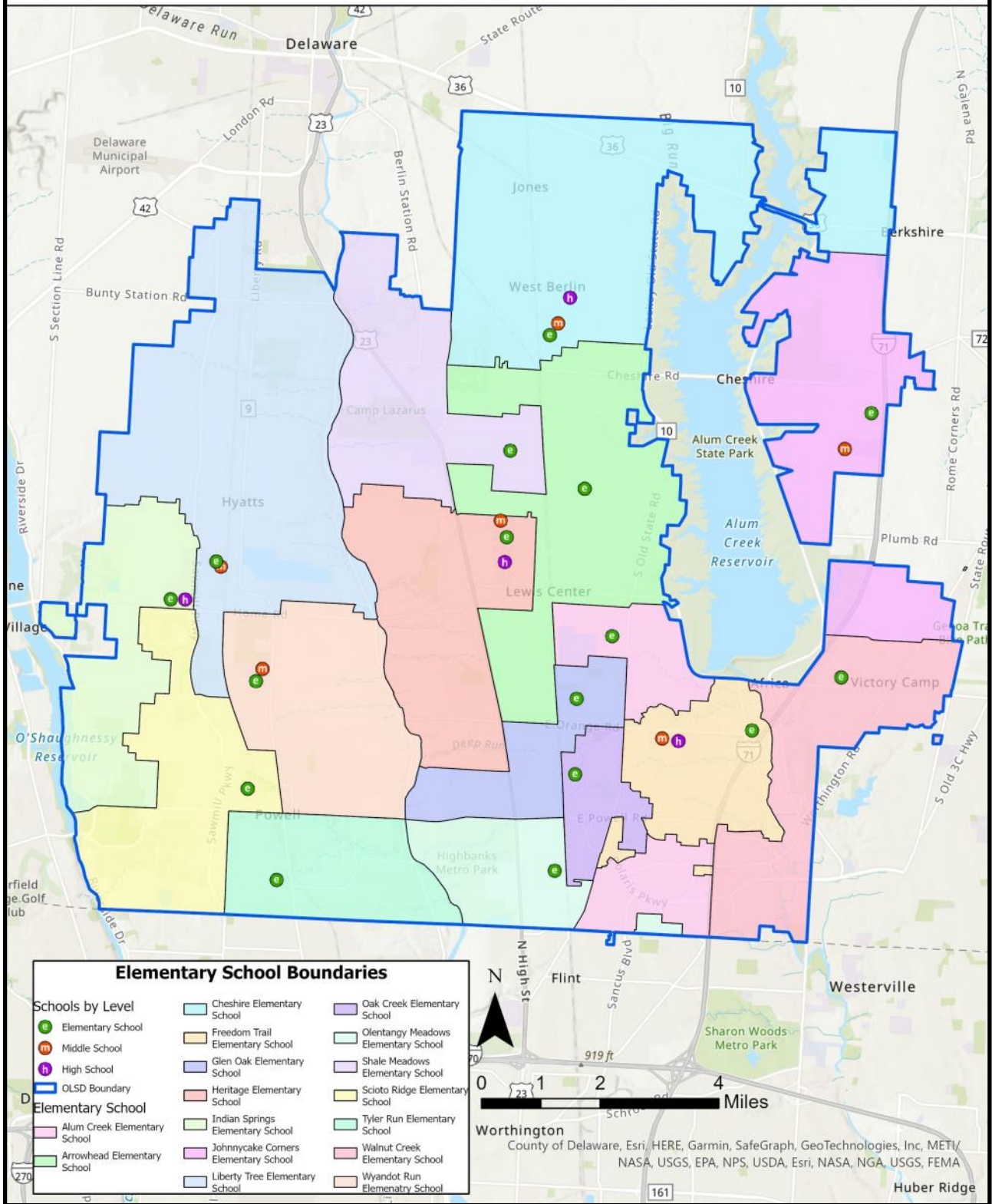
The table below shows the number of housing units within each category. This information can be used to identify any outliers in the data. For example, in the table on the previous page, units that are 6 years of age and assessed between \$250,000 and \$300,000 are showing a student yield of 2.00 students per unit. In the table below, you can see that there are three units in this category, so these units happen to yield 6 students.

Source: Franklin County & Delaware County auditors

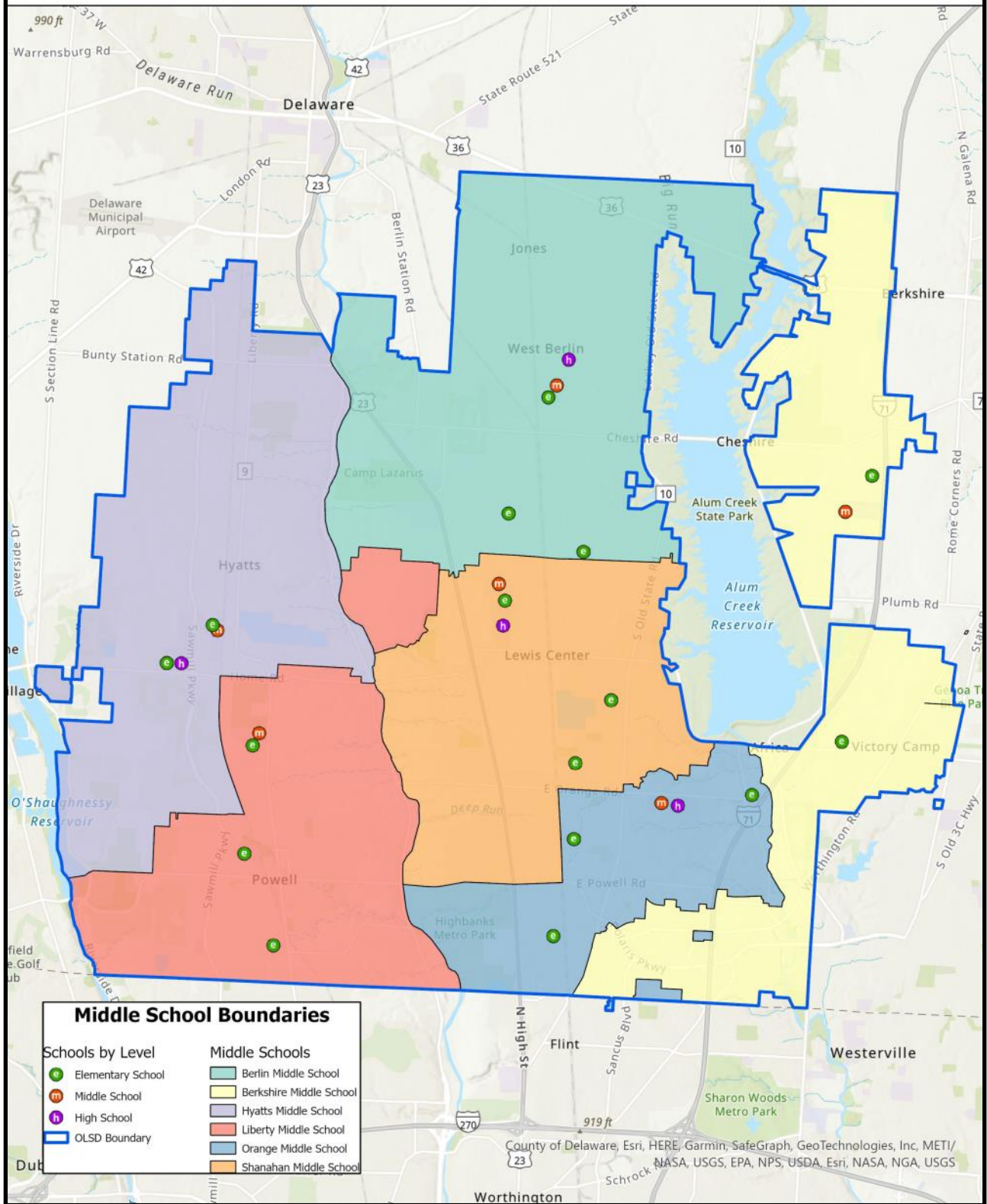
S-F Homes by Year Built	Assessed Value															TOTAL
	No Data	< 50K	50K - 100K	100K - 150K	150K - 200K	200K - 250K	250K - 300K	300K - 350K	350K - 400K	400K - 450K	450K - 500K	500K - 550K	550K - 600K	600K - 650K	> 650K	
> 35	97	33	295	96	121	177	176	209	209	124	81	51	46	31	61	1,807
35	0	0	0	0	0	43	53	61	38	25	27	20	15	12	24	318
34	0	0	0	0	1	28	29	50	23	21	10	13	10	7	27	219
33	0	0	0	0	0	15	19	36	33	13	6	13	10	8	23	176
32	0	0	0	0	0	11	33	33	49	21	20	13	11	10	23	224
31	0	0	0	0	0	9	32	60	65	27	11	14	15	17	36	286
30	0	0	0	0	0	5	46	152	78	46	45	26	24	19	56	497
29	0	0	0	0	0	28	82	197	121	61	25	31	29	22	53	649
28	0	0	0	0	1	62	89	92	80	26	19	21	11	10	18	429
27	0	0	0	0	2	97	174	183	117	47	28	16	16	10	29	719
26	0	0	0	0	2	101	184	258	150	65	34	17	14	6	22	853
25	0	0	0	0	1	48	189	294	142	64	22	15	13	13	32	833
24	0	0	0	0	4	147	383	411	192	80	52	55	24	19	61	1,428
23	0	0	0	0	0	83	320	350	194	61	46	30	19	10	43	1,156
22	0	0	0	0	1	64	340	355	235	104	55	39	23	20	38	1,274
21	0	0	0	0	10	149	246	326	281	140	90	75	32	19	40	1,408
20	0	0	0	0	13	73	238	254	292	180	111	64	45	18	62	1,350
19	0	0	0	0	0	34	285	271	336	191	128	86	53	27	65	1,476
18	0	0	1	0	10	27	192	142	239	225	151	53	40	38	122	1,240
17	0	0	0	0	4	3	62	81	114	154	80	44	34	25	61	662
16	0	0	0	0	5	13	73	66	108	111	57	33	33	20	56	575
15	0	0	0	0	3	9	49	51	50	40	23	18	12	14	43	312
14	0	0	0	0	1	7	34	47	47	44	30	16	13	10	19	268
13	0	0	0	0	3	6	31	65	65	63	44	20	18	8	16	339
12	0	0	0	0	3	11	18	44	55	65	49	35	27	13	42	362
11	0	0	0	0	0	3	30	60	76	99	73	32	30	22	27	452
10	0	0	0	0	0	1	34	71	97	100	89	46	31	19	42	530
9	0	0	0	0	0	0	12	65	81	64	80	41	26	19	55	443
8	0	0	0	0	0	0	25	84	78	58	61	34	28	11	60	439
7	0	0	0	0	0	0	16	84	89	99	85	54	36	17	56	536
6	0	0	0	0	0	0	3	57	108	124	74	45	37	21	40	509
5	0	0	0	0	0	0	3	58	125	135	55	60	37	24	42	539
4	0	0	0	0	0	0	11	69	139	148	75	45	19	13	32	551
3	0	0	0	0	0	0	2	67	132	146	66	39	19	4	30	505
2	0	2	47	57	80	80	46	74	60	76	33	19	14	3	14	605
1	0	5	14	0	0	0	0	0	0	0	0	0	0	0	0	19
TOTAL	97	40	357	153	265	1,334	3,559	4,777	4,298	3,047	1,935	1,233	864	559	1,470	23,988

2023-24 ATTENDANCE BOUNDARY MAPS

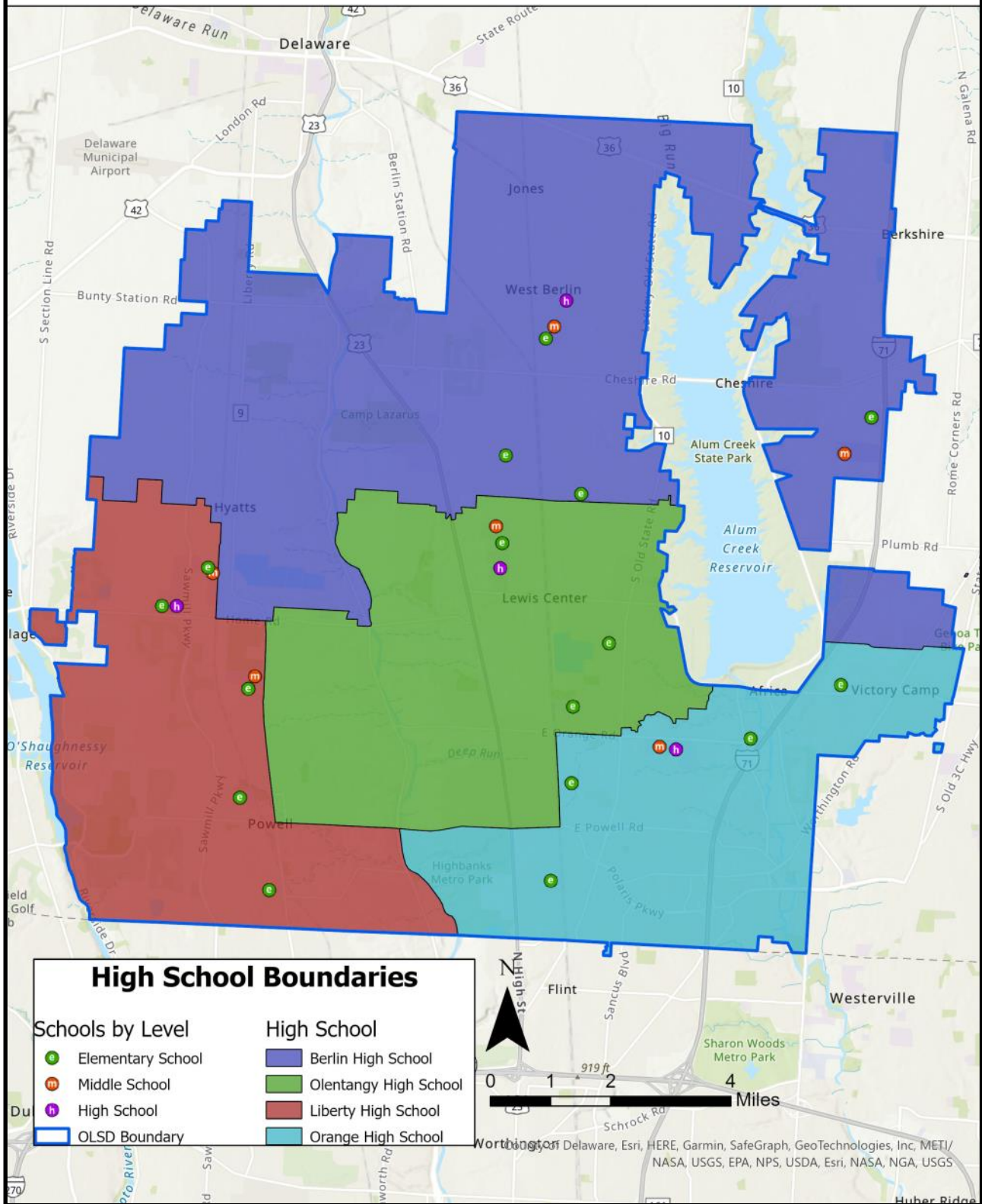
Olentangy Local School District: Elementary School Boundaries



Olentangy Local School District: Middle School Boundaries



Olentangy Local School District: High School Boundaries



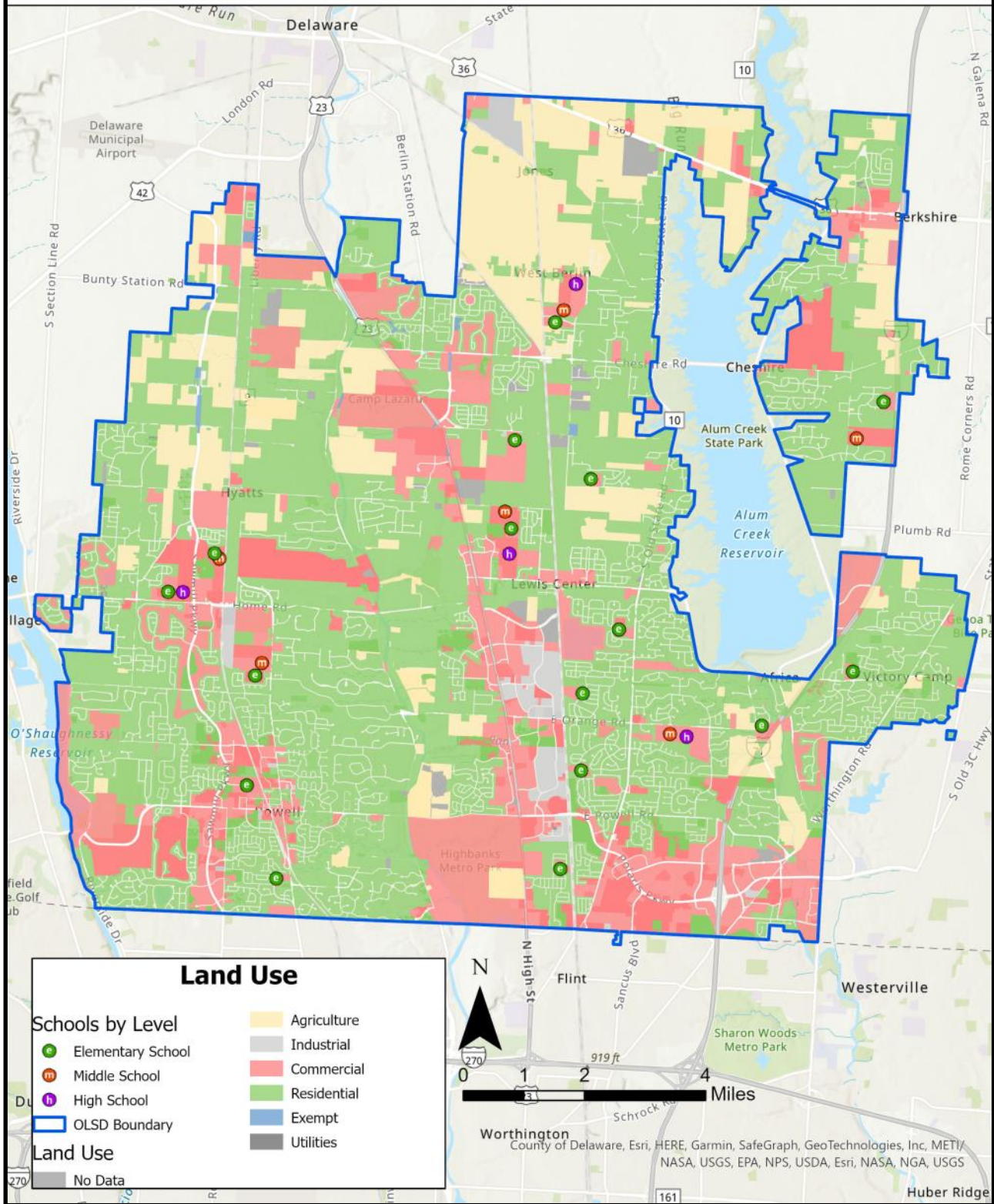
EXISTING LAND USE

Based on analysis of the zoning information provided by the Delaware and Franklin county auditors, the largest percentage of land use in the District falls in the residential category. Land use was analyzed to determine the tracts of land that could be developed in the future. This includes land greater than 10 acres that is already zoned for residential or agricultural use. The table below lists the percentages and acreage of the land use categories in the District. The map on the following page illustrates the land use within the District.

Acreage by Land Use	Acreage			Percentage
	Delaware Co.	Franklin Co.	TOTAL	
Agriculture	3,490	-	3,490	4%
Commercial	13,074	-	13,074	15%
Exempt	5,210	-	5,210	6%
Industrial	1,278	-	1,278	2%
Residential	57,172	12	57,184	68%
Vacant/Other	4,208	-	4,208	5%
TOTAL	84,432	12	84,444	100%

Source: Franklin County & Delaware County auditors

Olentangy Local School District: Parcels by Land Use



YIELD MODEL

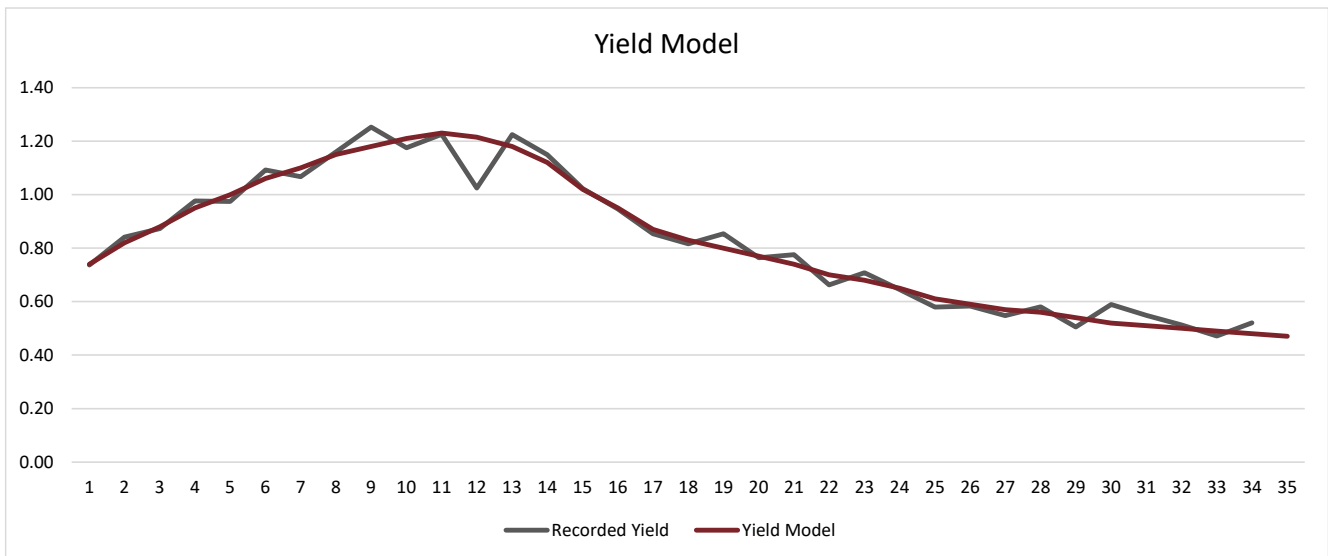
Thirty-Five Year Life-Cycle

Based on the 35-year cycle findings, a student yield model was developed to “age out” existing and future subdivisions. To forecast enrollment from existing single-family homes, the yield model was applied to each unit based on the current age of the home, and then continued through the life-cycle from that point on. The yield model was also applied to all planned development and future subdivisions from vacant developable land to forecast the number of students per unit by year as they move through the life-cycle. The graph below illustrates the yield model, as compared with the actual recorded yields.

According to the yield model, the Olentangy Local School District realizes the highest student yield from single-family homes that are 9 years of age. Although there are slight variations over the next 26 years, the general trend is a decrease in student yield beyond the peak yield.

In this model, a consistent yield of 0.47 students per housing unit is used beyond year 35 when a home matures. This mature yield is based on the average yield of homes older than 35.

There are currently 18,746 students residing in existing subdivided single-family homes. Based on their current positions in the 35-year life-cycle, these homes would mature and that number would decrease to 9,186 by the year 2058.



HOUSING

Housing Stock Types

For this analysis, housing stock and land were divided into the categories below. The corresponding table on the following page shows the overall yields, separated by housing type.

Existing Apartment Units: These are the existing apartment units within the District. There are currently 1,387 students living within these units. For purposes of this study, the current yield of 0.20 students per unit was used due to the transiency associated with multi-family units.

Existing Condominium Units: These are the existing condominium units within the District. This category includes attached, detached and luxury condominium as well as duplex units. There are currently 1,130 students living within these units. For purposes of this study, the current yield of 0.17 students per unit was used due to the transiency associated with multi-family units.

Existing Manufactured Home Park Units: These are the existing manufactured home park units within the District. There are currently 102 students living within these units. For purposes of this study, the current yield of 0.45 students per unit was used due to the transiency associated with multi-family units.

Existing Subdivided Single-Family Units: These are the existing, subdivided single-family homes within the District. There are currently a total of 18,524 students living within these units. All growth models assume that those units will maintain their current pace to maturity. The table on page 4 details the observed yields.

Existing Townhome Units: These are the existing townhome units within the District. There are currently 31 students living within these units. For purposes of this study, the current yield of 0.50 students per unit was used due to the transiency associated with multi-family units.

Existing Hotels: These are the existing number of students residing within hotel units in the 2023-24 school year. For the purposes of this study, the enrollment of this category is expected to remain at 17 students.

Existing Non-Subdivided Single-Family Units: These are the existing single-family homes that do not fall within subdivisions. There are currently 1,203 students living within these units. Because the vast majority of these units fall beyond the yield model (older than 35 years), for purposes of this study the enrollment for this category is expected to remain flat at 1,203 students.

Developing Single-Family: These are planned, single-family subdivisions that are in different phases of development. These units will be released into the yield model based on the timelines provided by housing developers and/or their associated municipalities. The timelines for developments that are still in early planning phases are based on District-wide development trends.

Developing Multi-Family: These are planned apartments, condominiums, and townhome complexes that are in different phases of development. These units will be released into the yield model based on the timelines provided by housing developers and/or their associated municipalities. The timelines for developments that are still in early planning phases are based on District-wide development trends.

Vacant Land with High Development Potential: This is currently undeveloped parcels that can be expected to be developed in the near future. This includes tracts of land adjacent to sewer and water infrastructure. There are currently 2,599 acres of land within this category. The number of units for these tracts of land was calculated by applying a density of 1 housing unit for every acre. The medium density of this category is to allow for roads, parks, greenspace, and utilities to be present within these future neighborhoods. These units are released into the yield model at rates of 400, 500, 600, and 700 units per year, and will follow the yield model through maturity.

Vacant Developable Land: This is currently undeveloped parcels that are larger than 10 acres and can be expected to be developed in the more distant future. There are currently 4,676 acres of land within this category that can be developed into residential housing within the District. The vacant developable land includes land already zoned for residential and agriculture. The number of units for these tracts of land was calculated by applying a density of 1 housing unit for every acre. These units are released into the yield model at rates of 400, 500, 600, and 700 units per year, and will follow the yield model through maturity.

Housing Type	Units	2023-24 Students	Yield
Apartments (Rental)	6,935	1,387	0.20
APARTMENT SUBTOTAL	6,935	1,387	0.20
Condominium (Detached)	868	279	0.32
Condominiums (Attached)	5,502	808	0.15
Duplex	43	22	0.51
Luxury Condominium (Detached)	342	21	0.06
CONDOMINIUM SUBTOTAL	6,755	1,130	0.17
Manufactured Home Park	225	102	0.45
MANUFACTURED HOME SUBTOTAL	225	102	0.45
Subdivided Single-Family	24,056	18,524	0.77
SUBDIVIDED SINGLE-FAMILY SUBTOTAL	24,056	18,524	0.77
Townhomes	62	31	0.50
TOWNHOME SUBTOTAL	62	31	0.50
Hotel	N/A	17	N/A
HOTEL SUBTOTAL	N/A	17	N/A
TOTAL	38,033	21,191	0.56

Student Yields by Boundary

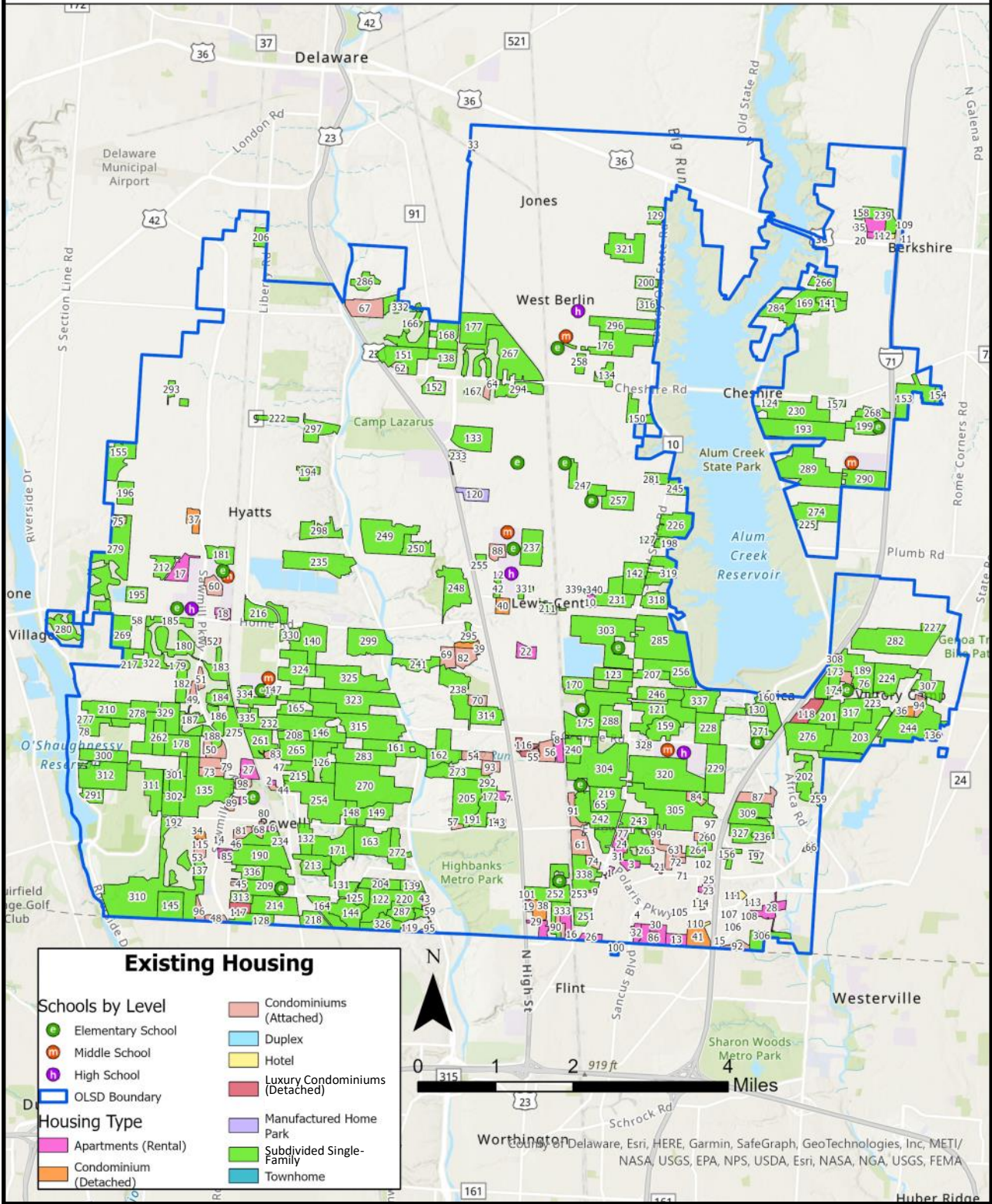
The table below details the student yields by housing type by boundary. Please note that this table is grade configuration specific, meaning that the student yields shown for elementary boundaries represent K-5 student yields, the student yields shown for middle boundaries represent 6-8 student yields, etc.

Student Yields by Boundary	Apartment	Condominium	Manufactured Home Park	Single-Family	Townhomes
Alum Creek ES	0.05	0.14	-	0.28	-
Arrowhead ES	0.08	0.00	0.21	0.28	0.18
Cheshire ES	0.09	0.00	-	0.53	-
Freedom Trail ES	0.09	0.05	-	0.28	-
Glen Oak ES	0.32	0.10	-	0.38	-
Heritage ES	0.00	0.09	-	0.45	-
Indian Springs ES	0.13	0.03	-	0.32	-
Johnnycake Corners ES	-	-	-	0.38	-
Liberty Tree ES	0.13	0.04	-	0.45	-
Oak Creek ES	-	0.13	-	0.28	-
Olentangy Meadows ES	0.13	0.18	-	0.40	-
Scioto Ridge ES	0.12	0.04	-	0.27	-
Shale Meadows ES	-	0.03	-	0.42	-
Tyler Run ES	0.05	0.01	-	0.29	-
Walnut Creek ES	0.05	0.03	-	0.29	-
Wyandot Run ES	-	0.07	-	0.29	-
ELEMENTARY SUBTOTAL	0.10	0.08	0.21	0.34	0.18
Berkshire Middle School	0.03	0.04	-	0.20	-
Hyatts Middle School	0.04	0.02	-	0.21	-
Liberty Middle School	0.05	0.02	-	0.16	-
Orange Middle School	0.06	0.05	-	0.17	-
Shanahan Middle School	0.06	0.04	-	0.19	0.18
Berlin Middle School	0.00	0.03	0.10	0.21	-
MIDDLE SUBTOTAL	0.05	0.04	0.10	0.19	0.18
Berlin High School	0.03	0.03	0.14	0.25	-
Liberty High School	0.07	0.03	-	0.25	-
Olentangy High School	0.08	0.06	-	0.24	0.15
Orange High School	0.04	0.06	-	0.26	-
HIGH SUBTOTAL	0.05	0.05	0.14	0.25	0.15
TOTAL	0.20	0.17	0.45	0.77	0.50

Existing Housing

The map on the following page shows the locations of the existing dwelling types, including attached condominiums (orange), duplexes (light blue), hotels (yellow), luxury detached condominiums (red), manufactured home parks (purple), single family (green), and townhomes (turquoise) subdivisions and complexes within the District. The tables starting on page 17 detail the student yields and other information for each subdivision.

Olentangy Local School District: Existing Housing



The table below details the existing **single-family** subdivisions/neighborhoods within the District.

Subdivision/Complex Information			2023-24 Boundary			Average		Units	K-12 Student Count	K-12 Yield
Map ID	Name	Housing Type	Elementary	Middle	High	Year Built	Assessed Value			
121	Abbey Knoll	Single Family	Alum Creek ES	Shanahan Middle School	Olentangy High School	2005	\$341,758	206	160	0.78
122	Abbott-Shire Of Loch Lomond (The)	Single Family	Tyler Run ES	Liberty Middle School	Liberty High School	1991	\$736,512	113	47	0.42
123	Alum Crossing	Single Family	Glen Oak ES	Shanahan Middle School	Olentangy High School	2011	\$416,759	96	111	1.16
124	Arbors @ Cheshire	Single Family	Johnnycake Corners ES	Berkshire Middle School	Berlin High School	2001	\$275,914	21	11	0.52
125	Ashbury Glen	Single Family	Tyler Run ES	Liberty Middle School	Liberty High School	1995	\$606,046	28	20	0.71
126	Ashmoore	Single Family	Wyandot Run ES	Liberty Middle School	Olentangy High School	1998	\$439,791	182	128	0.70
127	Avonlea	Single Family	Arrowhead ES	Shanahan Middle School	Olentangy High School	2008	\$397,240	20	19	0.95
128	Bainbridge Mills	Single Family	Tyler Run ES	Liberty Middle School	Liberty High School	2000	\$358,321	72	50	0.69
129	Bainbridge Ravines	Single Family	Cheshire ES	Berlin Middle School	Berlin High School	2016	\$744,420	10	14	1.40
130	Bale Kenyon Bluffs	Single Family	Freedom Trail ES	Orange Middle School	Orange High School	1996	\$337,200	31	18	0.58
131	Bartholomew Lakes	Single Family	Tyler Run ES	Liberty Middle School	Liberty High School	1990	\$543,374	42	23	0.55
132	Bartholomew Run	Single Family	Tyler Run ES	Liberty Middle School	Liberty High School	1989	\$336,016	99	61	0.62
133	Belmont Place	Single Family	Shale Meadows ES	Berlin Middle School	Berlin High School	2019	\$318,359	247	235	0.95
134	Berlin Manor	Single Family	Arrowhead ES	Berlin Middle School	Berlin High School	2020	\$485,800	34	24	0.71
135	Big Bear Farms	Single Family	Scioto Ridge ES	Liberty Middle School	Liberty High School	1999	\$338,032	357	237	0.66
136	Blackhawk Forest	Single Family	Walnut Creek ES	Berkshire Middle School	Orange High School	1995	\$385,521	24	7	0.29
137	Braemar @ Wedgewood	Single Family	Scioto Ridge ES	Liberty Middle School	Liberty High School	1995	\$257,816	70	0	0.00
138	Braumiller Woods	Single Family	Shale Meadows ES	Berlin Middle School	Berlin High School	2014	\$354,016	120	115	0.96
139	Briarcliffe	Single Family	Tyler Run ES	Liberty Middle School	Liberty High School	1994	\$585,530	23	5	0.22
140	Bridlespur	Single Family	Wyandot Run ES	Liberty Middle School	Olentangy High School	1988	\$871,800	25	12	0.48
141	Brookview Manor	Single Family	Johnnycake Corners ES	Berkshire Middle School	Berlin High School	2020	\$492,146	26	34	1.31
142	Bryn Mawr	Single Family	Arrowhead ES	Shanahan Middle School	Olentangy High School	2000	\$378,542	113	68	0.60
143	Burn Brae	Single Family	Glen Oak ES	Shanahan Middle School	Olentangy High School	1976	\$269,712	26	12	0.46
144	Calumet Farms	Single Family	Tyler Run ES	Liberty Middle School	Liberty High School	1994	\$440,880	75	39	0.52
145	Campden Lakes	Single Family	Scioto Ridge ES	Liberty Middle School	Liberty High School	1999	\$741,418	73	26	0.36
146	Canterbury	Single Family	Wyandot Run ES	Liberty Middle School	Olentangy High School	1996	\$358,784	160	101	0.63
147	Carraige Trail	Single Family	Wyandot Run ES	Liberty Middle School	Liberty High School	2021	\$214,700	11	0	0.00
148	Chambers Glen	Single Family	Wyandot Run ES	Liberty Middle School	Olentangy High School	1999	\$550,120	35	16	0.46
149	Chase (The)	Single Family	Wyandot Run ES	Liberty Middle School	Olentangy High School	1989	\$448,496	95	53	0.56
150	Cheshire Cove	Single Family	Arrowhead ES	Berlin Middle School	Berlin High School	2002	\$280,669	67	60	0.90
151	Cheshire Crossing	Single Family	Shale Meadows ES	Berlin Middle School	Berlin High School	2006	\$292,714	273	248	0.91
152	Cheshire Crossing (South)	Single Family	Shale Meadows ES	Berlin Middle School	Berlin High School	2005	\$280,763	126	104	0.83
153	Cheshire Woods	Single Family	Johnnycake Corners ES	Berkshire Middle School	Berlin High School	2014	\$420,365	83	85	1.02
154	Cheshire Woods Estates	Single Family	Johnnycake Corners ES	Berkshire Middle School	Berlin High School	2013	\$576,420	5	8	1.60
155	Clarkshaw Moors	Single Family	Liberty Tree ES	Hyatts Middle School	Berlin High School	2020	\$357,466	160	109	0.68
156	Colonial Meadows	Single Family	Walnut Creek ES	Berkshire Middle School	Orange High School	1970	\$255,557	14	1	0.07
157	Corners At Johnnycake	Single Family	Johnnycake Corners ES	Berkshire Middle School	Berlin High School	2019	\$380,465	23	17	0.74
158	Cottages At Northlake Woods North	Single Family	Cheshire ES	Berkshire Middle School	Berlin High School	No Data	\$63,000	100	11	0.11
159	Cross Creek	Single Family	Freedom Trail ES	Orange Middle School	Orange High School	2003	\$362,883	121	111	0.92
160	Crystal Valley	Single Family	Walnut Creek ES	Berkshire Middle School	Orange High School	1998	\$348,131	58	31	0.53
161	Daventry Park	Single Family	Wyandot Run ES	Liberty Middle School	Olentangy High School	2000	\$630,971	77	44	0.57
162	Deep Run @ Riverbend	Single Family	Heritage ES	Shanahan Middle School	Olentangy High School	2003	\$737,837	94	34	0.36
163	Deer Run	Single Family	Tyler Run ES	Liberty Middle School	Liberty High School	1990	\$552,885	89	59	0.66
164	Derby Glen Farms	Single Family	Tyler Run ES	Liberty Middle School	Liberty High School	2014	\$459,974	54	68	1.26
165	Deseret	Single Family	Wyandot Run ES	Liberty Middle School	Olentangy High School	2004	\$883,350	10	8	0.80
166	Dornoch Estates	Single Family	Shale Meadows ES	Berlin Middle School	Berlin High School	2001	\$284,155	233	151	0.65
167	Endave At Glenross	Single Family	Arrowhead ES	Berlin Middle School	Berlin High School	2018	\$398,784	19	20	1.05
168	Estates @ Braumiller (The)	Single Family	Shale Meadows ES	Berlin Middle School	Berlin High School	2014	\$344,886	177	223	1.26
169	Estates @ Sherman Lakes (The)	Single Family	Johnnycake Corners ES	Berkshire Middle School	Berlin High School	2016	\$470,913	101	117	1.16
170	Estates Of Glen Oak	Single Family	Glen Oak ES	Shanahan Middle School	Olentangy High School	2007	\$347,322	195	222	1.14
171	Falcon Ridge	Single Family	Tyler Run ES	Liberty Middle School	Liberty High School	1995	\$444,989	145	91	0.63
172	Foxridge	Single Family	Glen Oak ES	Shanahan Middle School	Olentangy High School	1992	\$268,253	62	43	0.69
173	Glade At Highland Lakes	Single Family	Walnut Creek ES	Berkshire Middle School	Orange High School	2019	\$513,609	23	18	0.78
174	Glade Highland Lakes	Single Family	Walnut Creek ES	Berkshire Middle School	Orange High School	2018	\$545,977	22	19	0.86
175	Glen Oak	Single Family	Glen Oak ES	Shanahan Middle School	Olentangy High School	2007	\$297,992	318	356	1.12
176	Glenmead	Single Family	Cheshire ES	Berlin Middle School	Berlin High School	2019	\$256,998	65	85	1.31
177	Glenross North	Single Family	Cheshire ES	Berlin Middle School	Berlin High School	2019	\$315,027	196	218	1.11
178	Golf Village	Single Family	Scioto Ridge ES	Hyatts Middle School	Liberty High School	2004	\$366,060	142	117	0.82
179	Golf Village - Estates	Single Family	Scioto Ridge ES	Hyatts Middle School	Liberty High School	2005	\$569,984	109	103	0.94
180	Golf Village - Fairways	Single Family	Scioto Ridge ES	Hyatts Middle School	Liberty High School	2004	\$430,238	176	147	0.84
181	Golf Village - Heathers	Single Family	Liberty Tree ES	Hyatts Middle School	Liberty High School	2019	\$337,612	130	115	0.88
182	Golf Village - Links	Single Family	Scioto Ridge ES	Hyatts Middle School	Liberty High School	2007	\$440,647	88	88	1.00
183	Golf Village - Manors	Single Family	Liberty Tree ES	Hyatts Middle School	Liberty High School	2008	\$421,778	108	108	1.00
184	Golf Village - Meadows	Single Family	Liberty Tree ES	Hyatts Middle School	Liberty High School	2003	\$388,488	60	43	0.72
185	Golf Village - Palisades	Single Family	Scioto Ridge ES	Hyatts Middle School	Liberty High School	2010	\$474,121	73	106	1.45
186	Golf Village - Reserve	Single Family	Scioto Ridge ES	Hyatts Middle School	Liberty High School	2006	\$450,172	57	51	0.89
187	Golf Village - Rutherford	Single Family	Scioto Ridge ES	Hyatts Middle School	Liberty High School	2011	\$524,211	87	35	0.40
188	Golf Village - Woods	Single Family	Scioto Ridge ES	Hyatts Middle School	Liberty High School	2006	\$455,717	42	33	0.79
189	Grand Oak	Single Family	Walnut Creek ES	Berkshire Middle School	Orange High School	2004	\$394,703	130	124	0.95
190	Grandshire	Single Family	Tyler Run ES	Liberty Middle School	Liberty High School	1994	\$330,588	297	199	0.67
191	Green Meadows	Single Family	Glen Oak ES	Shanahan Middle School	Olentangy High School	1988	\$252,512	147	68	0.46
192	Greens @ Wedgewood (The)	Single Family	Scioto Ridge ES	Liberty Middle School	Liberty High School	2003	\$441,450	32	9	0.28
193	Harbor Pointe	Single Family	Johnnycake Corners ES	Berkshire Middle School	Berlin High School	2004	\$480,131	189	167	0.88
194	Hardin Woods	Single Family	Liberty Tree ES	Hyatts Middle School	Berlin High School	2000	\$713,000	5	2	0.40
195	Harvest Point	Single Family	Indian Springs ES	Hyatts Middle School	Liberty High School	2019	\$456,089	38	53	1.39

Subdivision/Complex Information			2023-24 Boundary			Average		Units	K-12 Student Count	K-12 Yield
Map ID	Name	Housing Type	Elementary	Middle	High	Year Built	Assessed Value			
196	Heather Ridge	Single Family	Liberty Tree ES	Hyatts Middle School	Berlin High School	2020	\$300,280	75	63	0.84
197	Hickory Ridge	Single Family	Walnut Creek ES	Berkshire Middle School	Orange High School	1989	\$439,657	14	6	0.43
198	Hidden Cove	Single Family	Arrowhead ES	Shanahan Middle School	Olentangy High School	1997	\$325,080	45	24	0.53
199	Hidden Creek	Single Family	Johnnycake Corners ES	Berkshire Middle School	Berlin High School	2011	\$350,340	103	130	1.26
200	Hidden Meadows	Single Family	Cheshire ES	Berlin Middle School	Berlin High School	2002	\$478,054	13	6	0.46
201	Highland Hills	Single Family	Walnut Creek ES	Berkshire Middle School	Orange High School	2002	\$476,383	133	93	0.70
202	Highland Lakes	Single Family	Walnut Creek ES	Berkshire Middle School	Orange High School	1995	\$580,278	128	72	0.56
203	Highland Lakes North	Single Family	Walnut Creek ES	Berkshire Middle School	Orange High School	1998	\$396,465	287	164	0.57
204	Highland View	Single Family	Tyler Run ES	Liberty Middle School	Liberty High School	1964	\$297,059	37	17	0.46
205	Highmeadows Village	Single Family	Glen Oak ES	Shanahan Middle School	Olentangy High School	1987	\$228,881	377	170	0.45
206	Kesslebrooke Station	Single Family	Liberty Tree ES	Hyatts Middle School	Berlin High School	2003	\$214,654	99	93	0.94
207	Lake Shore	Single Family	Alum Creek ES	Shanahan Middle School	Olentangy High School	2008	\$464,790	41	44	1.07
208	Lakes @ Silverleaf (The)	Single Family	Wyandot Run ES	Liberty Middle School	Olentangy High School	2004	\$586,473	30	15	0.50
209	Lakes Of Powell (The)	Single Family	Tyler Run ES	Liberty Middle School	Liberty High School	2000	\$331,369	267	196	0.73
210	Lakeview	Single Family	Indian Springs ES	Hyatts Middle School	Liberty High School	1977	\$330,553	66	22	0.33
211	Lewis Center (Village Of)	Single Family	Arrowhead ES	Shanahan Middle School	Olentangy High School	1934	\$551,541	25	4	0.16
212	Liberty Grand District	Single Family	Indian Springs ES	Hyatts Middle School	Liberty High School	2021	\$139,503	125	72	0.58
213	Liberty Hills	Single Family	Tyler Run ES	Liberty Middle School	Liberty High School	1992	\$369,959	101	62	0.61
214	Liberty Lakes	Single Family	Tyler Run ES	Liberty Middle School	Liberty High School	1999	\$369,187	157	89	0.57
215	Liberty Ridge	Single Family	Wyandot Run ES	Liberty Middle School	Olentangy High School	1999	\$359,434	53	43	0.81
216	Liberty Trace	Single Family	Liberty Tree ES	Hyatts Middle School	Berlin High School	2019	\$443,330	116	133	1.15
217	Liberty Village	Single Family	Indian Springs ES	Berkshire Middle School	Liberty High School	2009	\$551,541	34	45	1.32
218	Libertydale	Single Family	Tyler Run ES	Liberty Middle School	Liberty High School	1999	\$301,013	82	96	1.17
219	Little Bear Village	Single Family	Oak Creek ES	Orange Middle School	Orange High School	2012	\$412,699	93	89	0.96
220	Loch Lomond Estates	Single Family	Tyler Run ES	Liberty Middle School	Liberty High School	2014	\$1,047,533	6	1	0.17
222	Malabar	Single Family	Liberty Tree ES	Hyatts Middle School	Berlin High School	2005	\$541,717	12	6	0.50
223	Manors @ Willow Bend	Single Family	Walnut Creek ES	Berkshire Middle School	Orange High School	2009	\$583,794	16	14	0.88
224	Mansard Estates	Single Family	Walnut Creek ES	Berkshire Middle School	Orange High School	2010	\$581,816	114	142	1.25
225	Maple Glen	Single Family	Johnnycake Corners ES	Berkshire Middle School	Berlin High School	2021	\$555,079	14	14	1.00
226	Marina @ Alum Creek	Single Family	Arrowhead ES	Shanahan Middle School	Olentangy High School	1998	\$331,250	136	99	0.73
227	Marisol	Single Family	Johnnycake Corners ES	Berkshire Middle School	Berlin High School	2017	\$592,972	29	12	0.41
228	Mccammon Chase	Single Family	Freedom Trail ES	Orange Middle School	Orange High School	2009	\$544,661	126	82	0.65
229	Mccammon Estates	Single Family	Freedom Trail ES	Orange Middle School	Orange High School	2007	\$421,482	171	193	1.13
230	Meadows @ Cheshire (The)	Single Family	Johnnycake Corners ES	Berkshire Middle School	Berlin High School	1999	\$327,148	227	137	0.60
231	Meadows @ Lewis Center	Single Family	Arrowhead ES	Shanahan Middle School	Olentangy High School	2015	\$515,813	136	144	1.06
232	Middlebury Estates	Single Family	Wyandot Run ES	Liberty Middle School	Liberty High School	2002	\$384,679	42	27	0.64
233	Midway Gardens	Single Family	Shale Meadows ES	Berlin Middle School	Berlin High School	1970	\$177,105	22	5	0.23
234	Murphy'S Park	Single Family	Tyler Run ES	Liberty Middle School	Liberty High School	2005	\$328,637	118	85	0.72
235	Nelson Farms	Single Family	Liberty Tree ES	Hyatts Middle School	Berlin High School	2015	\$604,134	122	94	0.77
236	Nicoya	Single Family	Freedom Trail ES	Orange Middle School	Orange High School	1992	\$512,176	17	2	0.12
237	North Farms	Single Family	Heritage ES	Shanahan Middle School	Olentangy High School	2017	\$402,845	183	219	1.20
238	North Orange	Single Family	Heritage ES	Shanahan Middle School	Olentangy High School	2006	\$437,174	219	242	1.11
239	Northlake Woods	Single Family	Cheshire ES	Berkshire Middle School	Berlin High School	2020	\$193,254	90	78	0.87
240	Northpoint Meadows	Single Family	Glen Oak ES	Orange Middle School	Orange High School	2006	\$285,723	84	94	1.12
241	Notch (The)	Single Family	Heritage ES	Shanahan Middle School	Olentangy High School	1985	\$640,795	19	2	0.11
242	Oak Creek	Single Family	Oak Creek ES	Orange Middle School	Orange High School	1996	\$273,693	384	230	0.60
243	Oak Creek East	Single Family	Oak Creek ES	Orange Middle School	Orange High School	1999	\$289,356	137	77	0.56
244	Oaks @ Highland Lakes (The)	Single Family	Walnut Creek ES	Berkshire Middle School	Orange High School	2004	\$385,773	214	162	0.76
245	Old Harbor Estates	Single Family	Arrowhead ES	Berlin Middle School	Berlin High School	2017	\$465,444	41	36	0.88
246	Olde State Farms	Single Family	Alum Creek ES	Shanahan Middle School	Olentangy High School	2008	\$445,258	85	80	0.94
247	Oldefield Estates	Single Family	Arrowhead ES	Berlin Middle School	Berlin High School	2006	\$376,338	79	62	0.78
248	Olentangy Crossing (West)	Single Family	Heritage ES	Shanahan Middle School	Olentangy High School	2012	\$481,128	149	164	1.10
249	Olentangy Falls	Single Family	Heritage ES	Liberty Middle School	Olentangy High School	2015	\$540,857	152	196	1.29
250	Olentangy Falls East	Single Family	Heritage ES	Liberty Middle School	Olentangy High School	2021	\$105,700	61	58	0.95
251	Olentangy Glade	Single Family	Olentangy Meadows ES	Orange Middle School	Orange High School	2002	\$239,434	146	96	0.66
252	Olentangy Meadows	Single Family	Olentangy Meadows ES	Orange Middle School	Orange High School	2009	\$291,699	381	392	1.03
253	Olentangy Reserve	Single Family	Oak Creek ES	Orange Middle School	Orange High School	2019	\$420,000	44	54	1.23
254	Olentangy Ridge	Single Family	Wyandot Run ES	Liberty Middle School	Olentangy High School	1987	\$358,278	365	175	0.48
255	Orangewick	Single Family	Heritage ES	Shanahan Middle School	Olentangy High School	1973	\$279,071	14	2	0.14
256	Parkshore	Single Family	Alum Creek ES	Shanahan Middle School	Olentangy High School	1998	\$422,519	145	95	0.66
257	Piatt Meadows	Single Family	Arrowhead ES	Berlin Middle School	Berlin High School	2001	\$295,976	122	71	0.58
258	Piatt Preserve	Single Family	Arrowhead & Cheshire ES	Berlin Middle School	Berlin High School	2021	\$212,105	22	21	0.95
259	Pine Valley	Single Family	Walnut Creek ES	Berkshire Middle School	Orange High School	1994	\$561,608	13	1	0.08
260	Polaris Green	Single Family	Freedom Trail ES	Orange Middle School	Orange High School	2008	\$201,408	71	27	0.38
261	Powell Place	Single Family	Wyandot Run ES	Liberty Middle School	Liberty High School	1997	\$302,469	158	114	0.72
262	Preserve @ Seldom Seen	Single Family	Scioto Ridge ES	Hyatts Middle School	Liberty High School	2009	\$673,297	39	31	0.79
263	Prestwick Commons	Single Family	Oak Creek ES	Orange Middle School	Orange High School	2000	\$251,885	304	206	0.68
264	Prestwick Green	Single Family	Freedom Trail ES	Orange Middle School	Orange High School	2002	\$254,587	134	100	0.75
265	Quail Meadows	Single Family	Wyandot Run ES	Liberty Middle School	Olentangy High School	1995	\$416,744	71	40	0.56
266	Ravines Of Alum Creek (The)	Single Family	Johnnycake Corners ES	Berkshire Middle School	Berlin High School	2018	\$437,870	67	83	1.24
267	Reserve @ Glenross North (The)	Single Family	Cheshire ES	Berlin Middle School	Berlin High School	2014	\$385,679	510	616	1.21
268	Reserve At Hidden Creek	Single Family	Johnnycake Corners ES	Berkshire Middle School	Berlin High School	2019	\$381,750	40	34	0.85
269	Reserve At Scioto Glen (The)	Single Family	Indian Springs ES	Hyatts Middle School	Liberty High School	2016	\$468,602	119	132	1.11
270	Retreat (The)	Single Family	Wyandot Run ES	Liberty Middle School	Olentangy High School	1984	\$546,354	162	59	0.36
271	River'S Edge @ Alum Creek	Single Family	Freedom Trail ES	Orange Middle School	Orange High School	2004	\$288,346	67	59	0.88

Subdivision/Complex Information			2023-24 Boundary			Average		Units	K-12 Student Count	K-12 Yield
Map ID	Name	Housing Type	Elementary	Middle	High	Year Built	Assessed Value			
272	River Run	Single Family	Tyler Run ES	Liberty Middle School	Liberty High School	2010	\$1,194,870	33	25	0.76
273	Riverbend	Single Family	Heritage ES	Shanahan Middle School	Olentangy High School	2003	\$634,445	69	39	0.57
274	Roseland	Single Family	Johnnycake Corners ES	Berkshire Middle School	Berlin High School	1984	\$380,343	31	4	0.13
275	Rutherford Estates	Single Family	Scioto Ridge ES	Hyatts Middle School	Liberty High School	2008	\$419,305	59	68	1.15
276	Sanctuary At The Lakes	Single Family	Walnut Creek ES	Berkshire Middle School	Orange High School	2016	\$510,907	203	165	0.81
277	Scioto Bluffs	Single Family	Indian Springs ES	Hyatts Middle School	Liberty High School	1993	\$526,597	33	16	0.48
278	Scioto Hills	Single Family	Indian Springs ES	Hyatts Middle School	Liberty High School	1985	\$367,155	55	27	0.49
279	Scioto Reserve (North)	Single Family	Indian Springs ES	Hyatts Middle School	Liberty High School	2004	\$375,180	527	497	0.94
280	Scioto Reserve (South)	Single Family	Indian Springs ES	Hyatts Middle School	Liberty High School	2001	\$334,091	160	115	0.72
281	Shadow Creek	Single Family	Arrowhead ES	Berlin Middle School	Berlin High School	1999	\$282,656	54	36	0.67
282	Sheffield Park	Single Family	Johnnycake Corners ES	Berkshire Middle School	Berlin High School	2008	\$411,238	240	258	1.08
283	Sherborne Mews	Single Family	Wyandot Run ES	Liberty Middle School	Olentangy High School	1994	\$703,266	71	32	0.45
284	Sherman Lakes	Single Family	Johnnycake Corners ES	Berkshire Middle School	Berlin High School	2009	\$401,345	117	97	0.83
285	Shores (The)	Single Family	Alum Creek ES	Shanahan Middle School	Olentangy High School	1997	\$383,550	391	243	0.62
286	Stockdale Farms	Single Family	Shale Meadows ES	Berlin Middle School	Berlin High School	No Data	No Data	66	36	0.55
287	Strathshire Hall @ Loch Lomond	Single Family	Tyler Run ES	Liberty Middle School	Liberty High School	1991	\$1,097,894	18	4	0.22
288	Summerfield Village	Single Family	Glen Oak ES	Shanahan Middle School	Olentangy High School	2001	\$306,607	152	107	0.70
289	Summerwood	Single Family	Johnnycake Corners ES	Berkshire Middle School	Berlin High School	2006	\$618,062	136	103	0.76
290	Summerwood Lakes	Single Family	Johnnycake Corners ES	Berkshire Middle School	Berlin High School	2017	\$366,648	100	105	1.05
291	Sunset Cove Estates	Single Family	Indian Springs ES	Hyatts Middle School	Liberty High School	1977	\$265,606	17	6	0.35
292	Sycamore Meadows	Single Family	Glen Oak ES	Shanahan Middle School	Olentangy High School	1994	\$285,844	18	10	0.56
293	Tall Oaks	Single Family	Liberty Tree ES	Hyatts Middle School	Berlin High School	1994	\$403,071	7	2	0.29
294	The Communities At Glenross	Single Family	Arrowhead ES	Berlin Middle School	Berlin High School	2020	\$289,098	158	74	0.47
295	The Courtyards At Clear Creek	Single Family	Heritage ES	Shanahan Middle School	Olentangy High School	2021	\$221,452	48	0	0.00
296	The Pines	Single Family	Cheshire ES	Berlin Middle School	Berlin High School	2020	\$384,950	177	178	1.01
297	Thorton Woods	Single Family	Liberty Tree ES	Hyatts Middle School	Berlin High School	2003	\$669,808	13	6	0.46
298	Timber Lake	Single Family	Liberty Tree ES	Hyatts Middle School	Berlin High School	1981	\$623,428	18	5	0.28
299	Trail'S End	Single Family	Wyandot Run ES	Liberty Middle School	Olentangy High School	2016	\$743,798	92	108	1.17
300	Trotters Gate	Single Family	Indian Springs ES	Hyatts Middle School	Liberty High School	2004	\$849,266	38	23	0.61
301	Verona	Single Family	Scioto Ridge ES	Liberty Middle School	Liberty High School	2019	\$461,973	63	43	0.68
302	Verona Village	Single Family	Scioto Ridge ES	Liberty Middle School	Liberty High School	2017	\$674,502	105	62	0.59
303	Village @ Alum Creek (The)	Single Family	Alum Creek ES	Shanahan Middle School	Olentangy High School	2001	\$331,846	445	382	0.86
304	Villages Of Oak Creek	Single Family	Oak Creek ES	Orange Middle School	Orange High School	1999	\$293,449	576	411	0.71
305	Walker Wood	Single Family	Freedom Trail ES	Orange Middle School	Orange High School	2001	\$378,032	420	270	0.64
306	Walnut Bend	Single Family	Walnut Creek ES	Berkshire Middle School	Orange High School	2001	\$276,639	135	88	0.65
307	Walnut Grove Estates	Single Family	Walnut Creek ES	Berkshire Middle School	Orange High School	2008	\$645,274	73	40	0.55
308	Walnut Woods	Single Family	Walnut Creek ES	Berkshire Middle School	Orange High School	2007	\$420,005	37	28	0.76
309	Waverly Place	Single Family	Freedom Trail ES	Orange Middle School	Orange High School	1994	\$424,445	110	72	0.65
310	Wedgewood	Single Family	Scioto Ridge ES	Liberty Middle School	Liberty High School	1997	\$625,146	478	237	0.50
311	Wedgewood Park	Single Family	Indian Springs ES	Hyatts Middle School	Liberty High School	2005	\$513,424	115	82	0.71
312	Wedgewood Park Estates	Single Family	Indian Springs ES	Hyatts Middle School	Liberty High School	2007	\$743,238	125	119	0.95
313	Wedgewood Place	Single Family	Tyler Run ES	Liberty Middle School	Liberty High School	2001	\$353,061	62	43	0.69
314	West Orange	Single Family	Heritage ES	Shanahan Middle School	Olentangy High School	1975	\$253,034	39	16	0.41
315	Westchester	Single Family	Wyandot Run ES	Liberty Middle School	Olentangy High School	1973	\$449,647	103	48	0.47
316	Whispering Creek	Single Family	Cheshire ES	Berlin Middle School	Berlin High School	2001	\$504,793	14	8	0.57
317	Willow Bend	Single Family	Walnut Creek ES	Berkshire Middle School	Orange High School	2004	\$563,327	123	81	0.66
318	Willow Springs	Single Family	Arrowhead ES	Shanahan Middle School	Olentangy High School	1994	\$336,084	68	27	0.40
319	Willow Springs North	Single Family	Arrowhead ES	Shanahan Middle School	Olentangy High School	2002	\$364,035	102	81	0.79
320	Wilshire	Single Family	Freedom Trail ES	Orange Middle School	Orange High School	2002	\$359,562	373	321	0.86
321	Winding Creek Estates	Single Family	Cheshire ES	Berlin Middle School	Berlin High School	2001	\$357,281	58	23	0.40
322	Windsong	Single Family	Indian Springs ES	Hyatts Middle School	Liberty High School	2009	\$510,909	11	14	1.27
323	Wingate Farms	Single Family	Wyandot Run ES	Liberty Middle School	Olentangy High School	1994	\$922,291	58	44	0.76
324	Woodland Glen	Single Family	Wyandot Run ES	Liberty Middle School	Olentangy High School	2006	\$753,764	73	63	0.86
325	Woodland Hall	Single Family	Wyandot Run ES	Liberty Middle School	Olentangy High School	2011	\$1,192,066	73	70	0.96
326	Woodlands @ Loch Lomond (The)	Single Family	Tyler Run ES	Liberty Middle School	Liberty High School	2004	\$727,098	43	17	0.40
327	Woods @ Bale-Kenyon (The)	Single Family	Freedom Trail ES	Orange Middle School	Orange High School	1987	\$405,067	73	49	0.67
328	Woods @ Cross Creek (The)	Single Family	Freedom Trail ES	Orange Middle School	Orange High School	1999	\$322,585	26	20	0.77
329	Woods @ Seldom Seen (The)	Single Family	Scioto Ridge ES	Hyatts Middle School	Liberty High School	2000	\$580,816	94	72	0.77
330	Woods @ Wildcat Run	Single Family	Wyandot Run ES	Liberty Middle School	Olentangy High School	2014	\$627,620	15	12	0.80
331	Woods At Weeping Rock	Single Family	Heritage ES	Shanahan Middle School	Olentangy High School	2015	\$451,288	24	25	1.04
332	Woods Of Dornoch (The)	Single Family	Shale Meadows ES	Berlin Middle School	Berlin High School	2005	\$362,419	91	54	0.59
333	Woods Of Olentangy (The)	Single Family	Olentangy Meadows ES	Orange Middle School	Orange High School	2000	\$242,731	179	100	0.56
334	Woods Of Powell (North)	Single Family	Wyandot Run ES	Liberty Middle School	Liberty High School	2010	\$455,191	104	132	1.27
335	Woods Of Powell (The)	Single Family	Wyandot Run ES	Liberty Middle School	Liberty High School	2006	\$409,485	65	64	0.98
336	Woods Of Sawmill (The)	Single Family	Tyler Run ES	Liberty Middle School	Liberty High School	1996	\$381,800	74	50	0.68
337	Woodstone	Single Family	Alum Creek ES	Shanahan Middle School	Olentangy High School	1996	\$490,979	61	18	0.30
338	Wynstone	Single Family	Oak Creek ES	Orange Middle School	Orange High School	1998	\$236,028	313	161	0.51

The table below details the existing **apartment** complexes within the District.

Subdivision/Complex Information			2023-24 Boundary			Units	K-12 Student Count	K-12 Yield
Map ID	Name	Housing Type	Elementary	Middle	High			
1	801 Polaris Apartments	Apartment	Freedom Trail ES	Orange Middle School	Orange High School	272	18	0.07
2	Abbotsgate	Apartment	Scioto Ridge ES	Liberty Middle School	Liberty High School	40	0	0.00
3	Antares Park Apartments	Apartment	Freedom Trail ES	Orange Middle School	Orange High School	224	56	0.25
4	Avenue At Polaris	Apartment	Olentangy Meadows ES	Orange Middle School	Orange High School	310	85	0.27
5	Bear Point	Apartment	Scioto Ridge ES	Liberty Middle School	Liberty High School	80	20	0.25
6	Center At Powell (The)	Apartment	Tyler Run ES	Liberty Middle School	Liberty High School	64	9	0.14
7	Cheswick Village	Apartment	Glen Oak ES	Shanahan Middle School	Olentangy High School	56	24	0.43
8	Dooley'S Orchard	Apartment	Glen Oak ES	Shanahan Middle School	Olentangy High School	216	158	0.73
9	Enclave Village	Apartment	Olentangy Meadows ES	Orange Middle School	Orange High School	38	34	0.89
10	Evans Farm Apartments	Apartment	Arrowhead ES	Shanahan Middle School	Olentangy High School	410	9	0.02
11	Fourwinds Place	Apartment	Cheshire ES	Berkshire Middle School	Berlin High School	144	9	0.06
12	Franklin House (Senior Apts.)	Apartment	Heritage ES	Shanahan Middle School	Olentangy High School	21	0	0.00
13	Gardens @ Polaris (The)	Apartment	Olentangy Meadows ES	Orange Middle School	Orange High School	300	92	0.31
14	Greensview	Apartment	Scioto Ridge ES	Liberty Middle School	Liberty High School	95	9	0.09
15	Kenyon Square Apartments	Apartment	Walnut Creek ES	Berkshire Middle School	Orange High School	219	25	0.11
16	Lakes Of Olentangy	Apartment	Olentangy Meadows ES	Orange Middle School	Orange High School	282	40	0.14
17	Liberty Grand Communities	Apartment	Indian Springs ES	Hyatts Middle School	Liberty High School	308	67	0.22
18	Liberty Summit	Apartment	Liberty Tree ES	Hyatts Middle School	Liberty High School	234	57	0.24
19	Miranda Apartments	Apartment	Olentangy Meadows ES	Orange Middle School	Orange High School	259	41	0.16
20	Northlake Summit Apartments	Apartment	Cheshire ES	Berkshire Middle School	Berlin High School	252	52	0.21
21	Northpark Place Apartments	Apartment	Alum Creek ES	Berkshire Middle School	Orange High School	102	0	0.00
22	Orange Grand Communities	Apartment	Arrowhead ES	Shanahan Middle School	Olentangy High School	288	95	0.33
23	Pointe At Polaris Phase II (The)	Apartment	Alum Creek ES	Berkshire Middle School	Orange High School	258	6	0.02
24	Polaris Grand Apartments	Apartment	Freedom Trail ES	Orange Middle School	Orange High School	196	61	0.31
25	Polaris Park Apartments	Apartment	Freedom Trail ES	Orange Middle School	Orange High School	216	11	0.05
26	Polaris View Extended Stay	Apartment	Alum Creek ES	Berkshire Middle School	Orange High School	240	29	0.12
27	Powell Grand (Apartments)	Apartment	Scioto Ridge ES	Liberty Middle School	Liberty High School	279	92	0.33
28	Ravines At Westar	Apartment	Walnut Creek ES	Berkshire Middle School	Orange High School	503	53	0.11
29	Remington Apartments	Apartment	Olentangy Meadows ES	Orange Middle School	Orange High School	337	125	0.37
30	Summerview	Apartment	Olentangy Meadows ES	Orange Middle School	Orange High School	184	33	0.18
31	Tapestry Park Polaris	Apartment	Freedom Trail ES	Orange Middle School	Orange High School	180	37	0.21
32	The Edge At Polaris	Apartment	Alum Creek ES	Berkshire Middle School	Orange High School	300	40	0.13
33	The Preserve At Quail Pass	Apartment	Cheshire ES	Berlin Middle School	Berlin High School	28	0	0.00

The table below details the existing **manufactured home parks** within the District.

Subdivision/Complex Information			2023-24 Boundary			Units	K-12 Student Count	K-12 Yield
Map ID	Name	Housing Type	Elementary	Middle	High			
120	Worthington Arms	Manufactured Home Park	Arrowhead ES	Berlin Middle School	Berlin High School	225	102	0.45

The table below details the existing **townhome** complex within the District.

Subdivision/Complex Information			2023-24 Boundary			Units	K-12 Student Count	K-12 Yield
Map ID	Name	Housing Type	Elementary	Middle	High			
339	Evans Farm Marketplace Townhomes	Townhomes	Arrowhead ES	Shanahan Middle School	Olentangy High School	45	29	0.64
340	Evans Farm Townhomes	Townhomes	Arrowhead ES	Shanahan Middle School	Olentangy High School	17	2	0.12

The table below details the existing **condominium** complexes within the District.

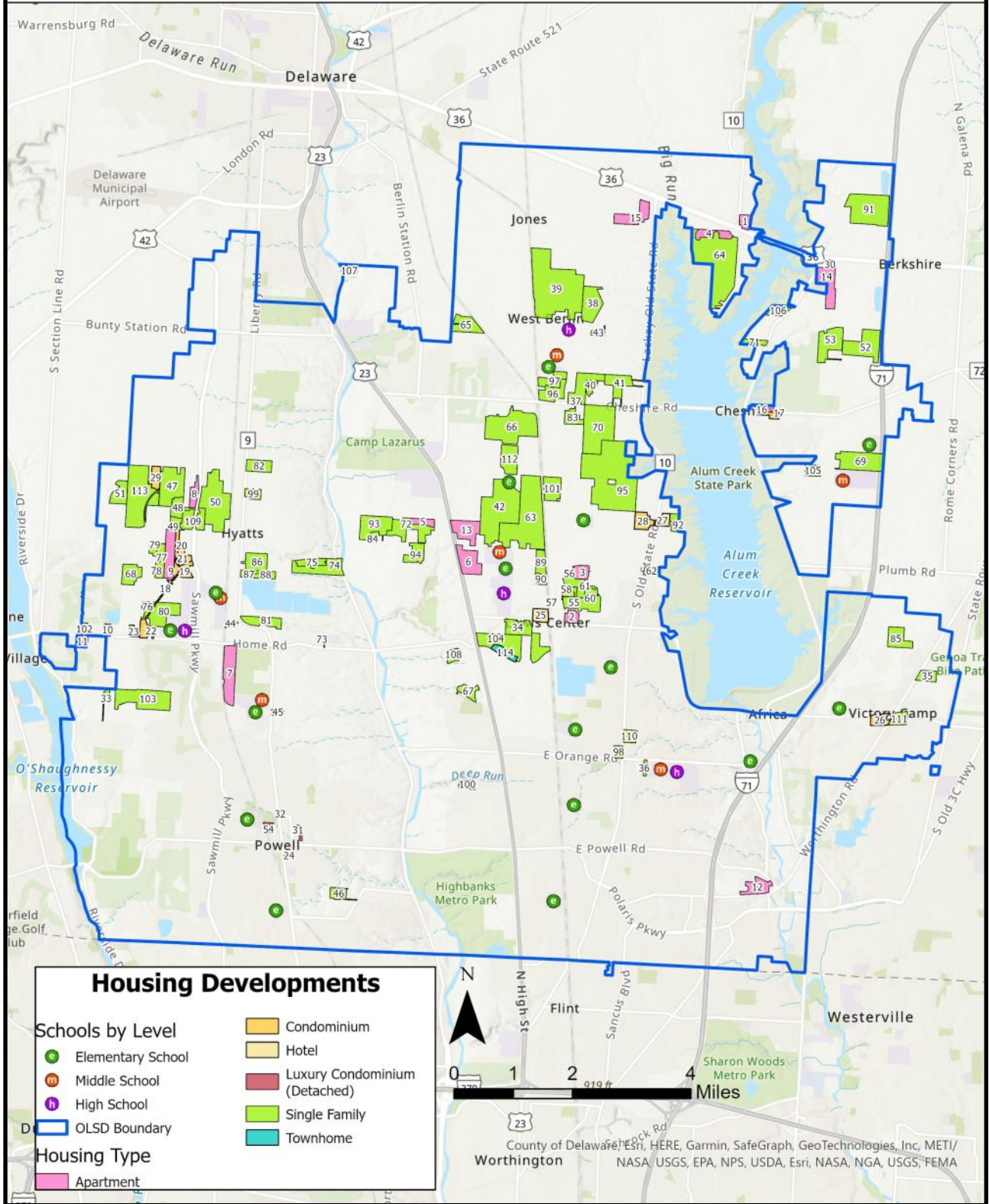
Subdivision/Complex Information			2023-24 Boundary			Units	K-12 Student Count	K-12 Yield
Map ID	Name	Housing Type	Elementary	Middle	High			
34	Bishopsgate	Condominium	Scioto Ridge ES	Liberty Middle School	Liberty High School	39	2	0.05
35	Cottages At Northlake Woods South	Condominium	Cheshire ES	Berkshire Middle School	Berlin High School	57	2	0.04
36	Homestead @ Highland Lakes	Condominium	Walnut Creek ES	Berkshire Middle School	Orange High School	61	4	0.07
37	Hyatts Crossing Condo	Condominium	Liberty Tree ES	Hyatts Middle School	Liberty High School	68	10	0.15
38	Olentangy Meadows (Condos)	Condominium	Olentangy Meadows ES	Orange Middle School	Orange High School	178	95	0.53
39	The Courtyards At Clear Creek	Condominium	Heritage ES	Shanahan Middle School	Olentangy High School	57	1	0.02
40	The Courtyards At The Ravines	Condominium	Heritage ES	Shanahan Middle School	Olentangy High School	55	2	0.04
41	Village @ Polaris Park (The)	Condominium	Alum Creek ES	Berkshire Middle School	Orange High School	294	115	0.39
42	Villas Of Olentangy (Condos)	Condominium	Heritage ES	Shanahan Middle School	Olentangy High School	59	48	0.81
43	Abbott-Shire Village	Condominium	Tyler Run ES	Liberty Middle School	Liberty High School	29	1	0.03
44	Brookehill Village	Condominium	Scioto Ridge ES	Liberty Middle School	Liberty High School	28	0	0.00
45	Commons Of Powell (The)	Condominium	Tyler Run ES	Liberty Middle School	Liberty High School	34	0	0.00
46	Courtyards At Grandshire (The)	Condominium	Tyler Run ES	Liberty Middle School	Liberty High School	23	0	0.00
47	Courtyards Of Powell	Condominium	Wyandot Run ES	Liberty Middle School	Liberty High School	33	2	0.06
48	Emerald Lakes	Condominium	Scioto Ridge ES	Liberty Middle School	Liberty High School	192	36	0.19
49	Golf Village - Lakes Edge	Condominium	Scioto Ridge ES	Hyatts Middle School	Liberty High School	38	1	0.03
50	Golf Village - Stone Bridge	Condominium	Scioto Ridge ES	Hyatts Middle School	Liberty High School	180	5	0.03
51	Golf Village - Village @ Kinsdale	Condominium	Liberty Tree ES	Hyatts Middle School	Liberty High School	51	3	0.06
52	Golf Village - Villas @ Woodcutter (Condo)	Condominium	Liberty Tree ES	Hyatts Middle School	Liberty High School	68	5	0.07
53	Hamptons @ Wedgewood (The)	Condominium	Scioto Ridge ES	Liberty Middle School	Liberty High School	57	0	0.00
54	Hidden Ravines	Condominium	Heritage ES	Shanahan Middle School	Olentangy High School	72	0	0.00
55	Hidden Reserve	Condominium	Glen Oak ES	Shanahan Middle School	Olentangy High School	52	5	0.10
56	Hidden Springs	Condominium	Glen Oak ES	Shanahan Middle School	Olentangy High School	240	62	0.26
57	Highmeadows Village (Condos)	Condominium	Glen Oak ES	Shanahan Middle School	Olentangy High School	38	22	0.58
58	Horsepower Farms Condos	Condominium	Indian Springs ES	Hyatts Middle School	Liberty High School	91	0	0.00
59	Kensborough	Condominium	Tyler Run ES	Liberty Middle School	Liberty High School	4	2	0.50
60	Kinsale Village Condos	Condominium	Liberty Tree ES	Hyatts Middle School	Liberty High School	124	20	0.16
61	Lake Club	Condominium	Oak Creek ES	Orange Middle School	Orange High School	432	102	0.24
62	Lakes @ Cheshire	Condominium	Shale Meadows ES	Berlin Middle School	Berlin High School	108	12	0.11
63	Lakes @ Polaris Condo	Condominium	Alum Creek ES	Berkshire Middle School	Orange High School	90	10	0.11
64	Landings At Glenross	Condominium	Arrowhead ES	Berlin Middle School	Berlin High School	53	2	0.04
65	Little Bear Village (Condos)	Condominium	Oak Creek ES	Orange Middle School	Orange High School	52	4	0.08
66	Maple Creek Condo'S	Condominium	Walnut Creek ES	Berkshire Middle School	Orange High School	52	1	0.02
67	Methesco (Student Housing)	Condominium	Shale Meadows ES	Berlin Middle School	Berlin High School	42	5	0.12
68	Murphy'S Crossing Condo	Condominium	Tyler Run ES	Liberty Middle School	Liberty High School	52	5	0.10
69	North Orange (Condo North)	Condominium	Heritage ES	Shanahan Middle School	Olentangy High School	69	3	0.04
70	North Orange (Condo South)	Condominium	Heritage ES	Shanahan Middle School	Olentangy High School	82	0	0.00
71	Northpark Place (Condos)	Condominium	Alum Creek ES	Berkshire Middle School	Orange High School	264	60	0.23
72	Northpark Place Condos	Condominium	Alum Creek ES	Berkshire Middle School	Orange High School	208	45	0.22
73	Orchards @ Big Bear Farms (The)	Condominium	Scioto Ridge ES	Liberty Middle School	Liberty High School	112	5	0.04
74	Parkview Northeast Condo	Condominium	Oak Creek ES	Orange Middle School	Orange High School	145	37	0.26
75	Ravines At Scioto Reserve	Condominium	Indian Springs ES	Hyatts Middle School	Liberty High School	61	6	0.10
76	Retreat @ Grand Oak (The)	Condominium	Walnut Creek ES	Berkshire Middle School	Orange High School	66	5	0.08
77	Retreat @ Polaris (The)	Condominium	Freedom Trail ES	Orange Middle School	Orange High School	75	10	0.13
78	Roundhill Condominiums	Condominium	Indian Springs ES	Hyatts Middle School	Liberty High School	12	7	0.58
79	Seldom Seen Acres Condo'S	Condominium	Scioto Ridge ES	Liberty Middle School	Liberty High School	132	7	0.05
80	Traditions @ Powell Condos	Condominium	Scioto Ridge ES	Liberty Middle School	Liberty High School	40	13	0.33
81	Village @ Murphy Park (The)	Condominium	Tyler Run ES	Liberty Middle School	Liberty High School	96	4	0.04
82	Village @ North Falls (The)	Condominium	Heritage ES	Shanahan Middle School	Olentangy High School	124	9	0.07
83	Village @ Powell (The)	Condominium	Wyandot Run ES	Liberty Middle School	Liberty High School	36	9	0.25
84	Village @ Walker Woods (The)	Condominium	Freedom Trail ES	Orange Middle School	Orange High School	108	3	0.03
85	Village @ Wedgewood (The)	Condominium	Scioto Ridge ES	Liberty Middle School	Liberty High School	72	2	0.03
86	Village @ Worthington Crossin	Condominium	Olentangy Meadows ES	Orange Middle School	Orange High School	80	2	0.03
87	Village At Bale Kenyon	Condominium	Freedom Trail ES	Orange Middle School	Orange High School	138	28	0.20
88	Village At Olentangy (Condos)	Condominium	Heritage ES	Shanahan Middle School	Olentangy High School	156	90	0.58
89	Village Of Clermont (The)	Condominium	Scioto Ridge ES	Liberty Middle School	Liberty High School	68	5	0.07
90	Village Of Olentangy	Condominium	Olentangy Meadows ES	Orange Middle School	Orange High School	92	13	0.14
91	Villages Of Oak Creek (The)	Condominium	Oak Creek ES	Orange Middle School	Orange High School	304	74	0.24
92	Villas @ Northstar (The)	Condominium	Walnut Creek ES	Berkshire Middle School	Orange High School	74	1	0.01

Subdivision/Complex Information			2023-24 Boundary			Units	K-12 Student Count	K-12 Yield
Map ID	Name	Housing Type	Elementary	Middle	High			
93	Villas @ Riverbend Condos (The)	Condominium	Heritage ES	Shanahan Middle School	Olentangy High School	140	3	0.02
94	Villas @ Walnut Grove	Condominium	Walnut Creek ES	Berkshire Middle School	Orange High School	52	0	0.00
95	Villas At Loch Lomond	Condominium	Tyler Run ES	Liberty Middle School	Liberty High School	25	0	0.00
96	Vistas @ Wedgewood (The)	Condominium	Scioto Ridge ES	Liberty Middle School	Liberty High School	192	37	0.19
97	Walker Park	Condominium	Freedom Trail ES	Orange Middle School	Orange High School	32	8	0.25
98	Woods @ Big Bear Farms (The)	Condominium	Scioto Ridge ES	Liberty Middle School	Liberty High School	88	5	0.06
99	Woods @ Polaris (The)	Condominium	Freedom Trail ES	Orange Middle School	Orange High School	124	12	0.10
100	Talia Court	Condominium	Olentangy Meadows ES	Orange Middle School	Orange High School	43	22	0.51
115	Barringtons @ Wedgewood Villa	Condominium	Scioto Ridge ES	Liberty Middle School	Liberty High School	40	2	0.05
116	Courtyard At Hidden Ravines (Condo)	Condominium	Glen Oak ES	Shanahan Middle School	Olentangy High School	91	2	0.02
117	Courtyards At Bradford Court Condos	Condominium	Tyler Run ES	Liberty Middle School	Liberty High School	68	0	0.00
118	Regency @ Hightland Lakes	Condominium	Walnut Creek ES	Berkshire Middle School	Orange High School	118	17	0.14
119	Villas At Loch Lomond	Condominium	Tyler Run ES	Liberty Middle School	Liberty High School	25	0	0.00

Developing Single- and Multi-Family Areas

The map on the following page illustrates the housing development currently occurring within the District boundaries. The tables starting on page 25 shows a listing of each development. The developments that are shown on this map are in different stages of development. The maximum and mature student potential values are based on the maximum and mature points within the yield model.

Olentangy Local School District: Housing Developments



Development Information				Boundary				Units at Build Out	Maximum Enrollment	Mature Enrollment
Map ID	Name	Housing Type	Status	Approximate Timeline	Elementary	Middle	High			
33	4910 Rutherford Road Cad	Single Family	Approved	Timeline Unavailable	Indian Springs ES	Hyatts Middle School	Liberty High School	3	4	1
34	Aldeia	Single Family	Approved	Timeline Unavailable	Heritage ES	Shanahan Middle School	Olentangy High School	121	149	57
35	Armenian Estates Cad	Single Family	Active	Timeline Unavailable	Walnut Creek ES	Berkshire Middle School	Orange High School	4	5	2
36	Azar Village	Single Family	Approved	Estimated Completion: 2024	Freedom Trail ES	Orange Middle School	Orange High School	10	12	5
37	Berlin Bluffs (Eaststone Crossing)	Single Family	Rezone	Estimated Completion: 2025	Arrowhead ES	Berlin Middle School	Berlin High School	79	97	37
38	Berlin Farm	Single Family	Active	Estimated Completion: 2039	Cheshire ES	Berlin Middle School	Berlin High School	91	112	43
39	Berlin Farm West	Single Family	Approved	Estimated Completion: 2044	Cheshire ES	Berlin Middle School	Berlin High School	486	598	228
40	Berlin Manor, Sec 2	Single Family	Active/Const	Estimated Completion: 2022	Arrowhead ES	Berlin Middle School	Berlin High School	21	26	10
41	Berlin Manor, Sec 3	Single Family	Active/Const	Estimated Completion: 2025	Arrowhead ES	Berlin Middle School	Berlin High School	40	49	19
42	Berlin Meadows	Single Family	Approved	Estimated Completion: 2040	Arrowhead & Shale Meadows ES	Berlin & Shanahan Middle School	Berlin & Olentangy High School	384	472	180
43	Berlin Ridge	Single Family	Approved	Timeline Unavailable	Cheshire ES	Berlin Middle School	Berlin High School	12	15	6
44	Brown Cad	Single Family	Approved	Timeline Unavailable	Liberty Tree ES	Hyatts Middle School	Berlin High School	3	4	1
45	Carriage Farms	Single Family	Active/Const	Estimated Completion: 2025	Wyandot Run ES	Liberty Middle School	Olentangy High School	23	28	11
46	Century Oak	Single Family	Approved	Timeline Unavailable	Tyler Run ES	Liberty Middle School	Liberty High School	7	9	3
47	Clark Shaw Reserve	Single Family	Approved	Estimated Completion: 2031	Liberty Tree ES	Hyatts Middle School	Berlin High School	173	213	81
48	Clark Shaw Reserve South	Single Family	Approved	Timeline Unavailable	Liberty Tree ES	Hyatts Middle School	Berlin High School	86	106	40
49	Clark Shaw Reserve South, Sec 1	Single Family	Approved	Timeline Unavailable	Liberty Tree ES	Hyatts Middle School	Berlin High School	31	38	15
50	Clarkshaw Crossing	Single Family	Approved	Timeline Unavailable	Liberty Tree ES	Hyatts Middle School	Berlin High School	254	312	119
51	Clarkshaw Moors, Sec 5	Single Family	Active/Const	Estimated Completion: 2023	Liberty Tree ES	Hyatts Middle School	Berlin High School	61	75	29
52	Eagle Creek	Single Family	Approved	Estimated Completion: 2033	Johnnycake Corners ES	Berkshire Middle School	Berlin High School	252	310	118
53	Eagle Crest Estates	Single Family	Approved	Timeline Unavailable	Johnnycake Corners ES	Berkshire Middle School	Berlin High School	56	69	26
54	Encore Park	Single Family	Approved	Timeline Unavailable	Sicoto Ridge ES	Liberty Middle School	Liberty High School	19	23	9
55	Evans Farm Sec 1	Single Family	Active/Const	Estimated Completion: 2026	Arrowhead ES	Shanahan Middle School	Olentangy High School	146	180	69
56	Evans Farm Sec 6, Ph B	Single Family	Approved	Estimated Completion: 2026	Arrowhead ES	Shanahan Middle School	Olentangy High School	97	119	46
57	Evans Farm, Sec 2, Ph A, Pt I	Single Family	Active/Const	Estimated Completion: 2024	Arrowhead ES	Shanahan Middle School	Olentangy High School	26	32	12
58	Evans Farm, Sec 2, Ph A, Pt II	Single Family	Active/Const	Estimated Completion: 2024	Arrowhead ES	Shanahan Middle School	Olentangy High School	35	43	16
59	Evans Farm, Sec 2, Ph B	Single Family	Active/Const	Estimated Completion: 2024	Arrowhead ES	Shanahan Middle School	Olentangy High School	18	22	8
60	Evans Farm, Sec 2, Ph C	Single Family	Active/Const	Estimated Completion: 2025	Arrowhead ES	Shanahan Middle School	Olentangy High School	37	46	17
61	Evans Farm, Sec 2, Ph D	Single Family	Active/Const	Estimated Completion: 2024	Arrowhead ES	Shanahan Middle School	Olentangy High School	10	12	5
62	Evans Farm, Sec 3	Single Family	Active/Const	Estimated Completion: 2024	Arrowhead ES	Shanahan Middle School	Olentangy High School	18	22	8
63	Evans Farm, Sec 4	Single Family	Approved	Estimated Completion: 2043	Arrowhead & Shale Meadows ES	Shanahan & Berlin Middle School	Olentangy & Berlin High School	417	513	196
64	Fox Haven Farms Estates	Single Family	Rezone	Timeline Unavailable	Cheshire ES	Berlin Middle School	Berlin High School	245	301	115
65	Glennross North Ph. 5 & 6	Single Family	Active/Const	Estimated Completion: 2027	Cheshire ES	Berlin Middle School	Berlin High School	91	112	43
66	Glennross Pulte Homes	Single Family	Active/Const	Estimated Completion: 2026	Arrowhead ES	Berlin Middle School	Berlin High School	245	301	115
67	Grand Pointe At North Orange	Single Family	Active/Const	Estimated Completion: 2023	Heritage ES	Shanahan Middle School	Olentangy High School	35	43	16
68	Harvest Curve	Single Family	Active/Const	Estimated Completion: 2024	Indian Springs ES	Hyatts Middle School	Liberty High School	38	47	18
69	Hidden Creek	Single Family	Approved	Timeline Unavailable	Johnnycake Corners ES	Berkshire Middle School	Berlin High School	106	130	50
70	Howard Farms	Single Family	Active/Const	Estimated Completion: 2027	Arrowhead ES	Berlin Middle School	Berlin High School	175	215	82
71	Hunter'S Run	Single Family	Reviewed	Timeline Unavailable	Johnnycake Corners ES	Berkshire Middle School	Berlin High School	5	6	2
72	Hyatts Meadows	Single Family	Active/Const	Estimated Completion: 2026	Shale Meadows & Heritage ES	Berlin & Liberty Middle School	Berlin & Olentangy High School	119	146	56
73	Koban Cad	Single Family	Reviewed	Estimated Completion: 2024	Wyandot Run ES	Liberty Middle School	Olentangy High School	3	4	1

Development Information				Boundary				Units at Build Out	Maximum Enrollment	Mature Enrollment
Map ID	Name	Housing Type	Status	Approximate Timeline	Elementary	Middle	High			
74	Liberty Bluff	Single Family	Active/Const	Estimated Completion: 2025	Liberty Tree ES	Hyatts Middle School	Berlin High School	68	84	32
75	Liberty Bluff, Sec 2	Single Family	Active/Const	Estimated Completion: 2023	Liberty Tree ES	Hyatts Middle School	Berlin High School	29	36	14
76	Liberty Grand District Sec 10	Single Family	Approved	Timeline Unavailable	Indian Springs ES	Hyatts Middle School	Liberty High School	38	47	18
77	Liberty Grand District Sec 11	Single Family	Approved	Timeline Unavailable	Indian Springs ES	Hyatts Middle School	Liberty High School	47	58	22
78	Liberty Grand District Sec 7	Single Family	Active	Estimated Completion: 2025	Indian Springs ES	Hyatts Middle School	Liberty High School	33	41	16
79	Liberty Grand District Sec 9	Single Family	Active	Estimated Completion: 2026	Indian Springs ES	Hyatts Middle School	Liberty High School	37	46	17
80	Liberty Grand M Homes	Single Family	Active/Const	Estimated Completion: 2025	Indian Springs ES	Hyatts Middle School	Liberty High School	205	252	96
81	Liberty Trace, Sec 4	Single Family	Approved	Timeline Unavailable	Liberty Tree ES	Hyatts Middle School	Berlin High School	25	31	12
82	Liberty Trails	Single Family	Approved	Timeline Unavailable	Liberty Tree ES	Hyatts Middle School	Berlin High School	17	21	8
83	Maevie Meadows	Single Family	Approved	Estimated Completion: 2025	Arrowhead ES	Berlin Middle School	Berlin High School	43	53	20
84	Meyers Property Cad	Single Family	Active/Const	Timeline Unavailable	Heritage ES	Liberty Middle School	Olentangy High School	4	5	2
85	Mirasol Sec 2	Single Family	Active/Const	Estimated Completion: 2023	Johnnyvake Corners ES	Berkshire Middle School	Berlin High School	57	70	27
86	Nelson Farms North	Single Family	Approved	Estimated Completion: 2025	Liberty Tree ES	Hyatts Middle School	Berlin High School	37	46	17
87	Nelson Farms, Sec 3, Ph A	Single Family	Active/Const	Estimated Completion: 2025	Liberty Tree ES	Hyatts Middle School	Berlin High School	13	16	6
88	Nelson Farms, Sec 3, Ph B	Single Family	Active/Const	Estimated Completion: 2026	Liberty Tree ES	Hyatts Middle School	Berlin High School	21	26	10
89	North Farms Sec 2 & 10	Single Family	Approved	Timeline Unavailable	Arrowhead ES	Shanahan Middle School	Olentangy High School	222	273	104
90	North Farms Sec 9	Single Family	Active/Const	Estimated Completion: 2022	Arrowhead ES	Shanahan Middle School	Olentangy High School	26	32	12
91	Northlake Preserve	Single Family	Active/Const	Estimated Completion: 2026	Cheshire ES	Berkshire Middle School	Berlin High School	300	369	141
92	Old Harbor Estates - Section 2	Single Family	Active/Const	Estimated Completion: 2024	Arrowhead ES	Berlin Middle School	Berlin High School	24	30	11
93	Olentangy Falls 4,5,6	Single Family	Active/Const	Estimated Completion: 2024	Heritage ES	Liberty Middle School	Olentangy High School	40	49	19
94	Olentangy Falls East, Sec 4	Single Family	Active/Const	Estimated Completion: 2026	Heritage ES	Liberty Middle School	Olentangy High School	68	84	32
95	Paykoff / Evans Farm	Single Family	Rezoned	Estimated Completion: 2046	Arrowhead ES	Berlin Middle School	Berlin High School	539	663	253
96	Platt Preserve Extension	Single Family	Active/Const	Estimated Completion: 2022	Cheshire & Arrowhead ES	Berlin Middle School	Berlin High School	57	70	27
97	Platt Preserve, Sec 1	Single Family	Active/Const	Estimated Completion: 2022	Cheshire ES	Berlin Middle School	Berlin High School	49	60	23
98	Porsh Subdivision	Single Family	Approved	Estimated Completion: 2024	Glen Oak ES	Shanahan Middle School	Olentangy High School	22	27	10
99	Rabbit Run	Single Family	Approved	Timeline Unavailable	Liberty Tree ES	Hyatts Middle School	Berlin High School	12	15	6
100	Ravine Run	Single Family	Approved	Timeline Unavailable	Heritage ES	Shanahan Middle School	Olentangy High School	14	17	7
101	Ross Estates	Single Family	Approved	Estimated Completion: 2026	Arrowhead ES	Berlin Middle School	Berlin High School	72	89	34
102	Scioto Reserve Extension	Single Family	Active/Const	Estimated Completion: 2022	Indian Springs ES	Hyatts Middle School	Liberty High School	14	17	7
103	Shelly's Retreat At Carpenter's Mill Sec 1 Pt B	Single Family	Active/Const	Estimated Completion: 2025	Indian Springs ES	Hyatts Middle School	Liberty High School	182	224	86
104	Slate Ridge Residential	Single Family	Active/Const	Timeline Unavailable	Heritage & Arrowhead ES	Shanahan Middle School	Olentangy High School	126	155	59
105	Summer Crest Drive	Single Family	Approved	Timeline Unavailable	Johnnyvake Corners ES	Berkshire Middle School	Berlin High School	10	12	5
106	Sycamore Trail Sub	Single Family	Active/Const	Estimated Completion: 2022	Johnnyvake Corners ES	Berkshire Middle School	Berlin High School	20	25	9
107	Terra Alta	Single Family	Active/Const	Estimated Completion: 2024	Shale Meadows ES	Berlin Middle School	Berlin High School	11	14	5
108	The Courtyards At Clear Creek, Sec 3	Single Family	Active/Const	Estimated Completion: 2024	Heritage ES	Shanahan Middle School	Olentangy High School	41	50	19
109	The Courtyards On Hyatts	Single Family	Active/Const	Timeline Unavailable	Liberty Tree ES	Hyatts Middle School	Berlin High School	84	103	39
110	The Enclave At Abbey Knoll	Single Family	Active/Const	Estimated Completion: 2022	Alum Creek ES	Shanahan Middle School	Olentangy High School	26	32	12
111	The Grove	Single Family	Active	Timeline Unavailable	Walnut Creek ES	Berkshire Middle School	Orange High School	31	38	15
112	Winterbrook Place	Single Family	Active/Const	Estimated Completion: 2027	Shale Meadows ES	Berkshire Middle School	Berlin High School	105	129	49
113	Woodcrest Crossing	Single Family	Active/Const	Estimated Completion: 2029	Liberty Tree ES	Hyatts Middle School	Berlin High School	240	295	113

Development Information				Boundary				Units at Build Out	Maximum Enrollment	Mature Enrollment
Map ID	Name	Housing Type	Status	Approximate Timeline	Elementary	Middle	High			
114	Orange Grand Estates	Townhome	Rezone	Timeline Unavailable	Arrowhead ES	Shanahan Middle School	Olentangy High School	120	60	60
1	Elysian At Alum Creek	Apartment	Approved	Timeline Unavailable	Cheshire ES	Berlin Middle School	Berlin High School	250	50	50
2	Evans Farm Marketplace West	Apartment	Active/Const	Estimated Completion: 2028	Arrowhead ES	Shanahan Middle School	Olentangy High School	900	180	180
3	Evans Farm Sec 6, Ph A	Apartment	Approved	Estimated Completion: 2024	Arrowhead ES	Shanahan Middle School	Olentangy High School	131	26	26
4	Fox Haven Farms Estates	Apartment	Rezone	Estimated Completion: 2028	Cheshire ES	Berlin Middle School	Berlin High School	120	24	24
5	Hyatts Meadows	Apartment	Active/Const	Estimated Completion: 2026	Shale Meadows ES	Berlin Middle School	Berlin High School	78	16	16
6	Orange Summit	Apartment	Active/Const	Estimated Completion: 2027	Heritage ES	Shanahan Middle School	Olentangy High School	400	80	80
7	Redwood	Apartment	Approved	Timeline Unavailable	Wyandot Run ES	Liberty Middle School	Liberty High School	327	65	65
8	Rosewood Village	Apartment	Approved	Timeline Unavailable	Liberty Tree ES	Hyatts Middle School	Berlin High School	208	42	42
9	Sara Crossing	Apartment	Approved	Timeline Unavailable	Liberty Tree & Indian Springs ES	Hyatts Middle School	Liberty High School	231	46	46
10	Scoto Meadows North	Apartment	Active/Const	Timeline Unavailable	Indian Springs ES	Hyatts Middle School	Liberty High School	20	4	4
11	Scoto Meadows South	Apartment	Rezone	Timeline Unavailable	Indian Springs ES	Hyatts Middle School	Liberty High School	25	5	5
12	The Galaxy At Polaris	Apartment	Active	Timeline Unavailable	Walnut Creek ES	Berkshire Middle School	Orange High School	600	120	120
13	The Greenery	Apartment	Rezone	Estimated Completion: 2027	Arrowhead ES	Shanahan & Berlin Middle School	Olentangy & Berlin High School	116	23	23
14	The Ravines At Meadow Ridge	Apartment	Approved	Estimated Completion: 2040	Johnnywake Corners & Cheshire ES	Berkshire Middle School	Berlin High School	792	158	158
15	The Residences At Berlin Township	Apartment	Approved	Timeline Unavailable	Cheshire ES	Berlin Middle School	Berlin High School	368	74	74
16	The Shire	Apartment	Rezone	Timeline Unavailable	Johnnywake Corners ES	Berkshire Middle School	Berlin High School	10	2	2
17	Cheshire Mills	Condo	Approved	Timeline Unavailable	Johnnywake Corners ES	Berkshire Middle School	Berlin High School	46	8	8
18	Liberty Grand Communities, Sec 1	Condo	Active/Const	Estimated Completion: 2024	Indian Springs ES	Hyatts Middle School	Liberty High School	20	3	3
19	Liberty Grand Communities, Sec 1 Ph A	Condo	Approved	Estimated Completion: 2024	Indian Springs ES	Hyatts Middle School	Liberty High School	25	4	4
20	Liberty Grand Communities, Sec 2	Condo	Active/Const	Estimated Completion: 2026	Indian Springs ES	Hyatts Middle School	Liberty High School	38	6	6
21	Liberty Grand Communities, Sec 3	Condo	Active/Const	Estimated Completion: 2028	Indian Springs ES	Hyatts Middle School	Liberty High School	108	18	18
22	Liberty Reserve	Condo	Approved	Timeline Unavailable	Indian Springs ES	Hyatts Middle School	Liberty High School	42	7	7
23	Middlebury Crossing	Condo	Approved	Timeline Unavailable	Indian Springs ES	Hyatts Middle School	Liberty High School	62	10	10
24	Powell Green Townhomes	Condo	Active/Const	Timeline Unavailable	Tyler Run ES	Liberty Middle School	Liberty High School	22	4	4
25	The Cove At Evans Farm	Condo	Active/Const	Estimated Completion: 2027	Arrowhead ES	Shanahan Middle School	Olentangy High School	114	19	19
26	The Nook At Highland Lakes	Condo	Active/Const	Estimated Completion: 2023	Walnut Creek ES	Berkshire Middle School	Orange High School	30	5	5
27	The Villas At Old Harbor East	Condo	Active/Const	Estimated Completion: 2024	Arrowhead ES	Berlin Middle School	Berlin High School	50	8	8
28	The Villas At Old Harbor West	Condo	Active/Const	Estimated Completion: 2024	Arrowhead ES	Berlin Middle School	Berlin High School	90	15	15
29	Woodcrest Crossing	Condo	Active/Const	Estimated Completion: 2023	Liberty Tree ES	Hyatts Middle School	Berlin High School	60	10	10
31	Haiper's Pointe	Luxury Detached Condo	Active/Const	Estimated Completion: 2024	Wyandot Run ES	Liberty Middle School	Olentangy High School	50	3	3
32	Morris Station	Luxury Detached Condo	Active/Const	Estimated Completion: 2023	Scoto Ridge ES	Liberty Middle School	Liberty High School	21	1	1
50	Clarkshaw Crossing	Apartment	Approved	Timeline Unavailable	Liberty Tree ES	Hyatts Middle School	Berlin High School	136	27	27

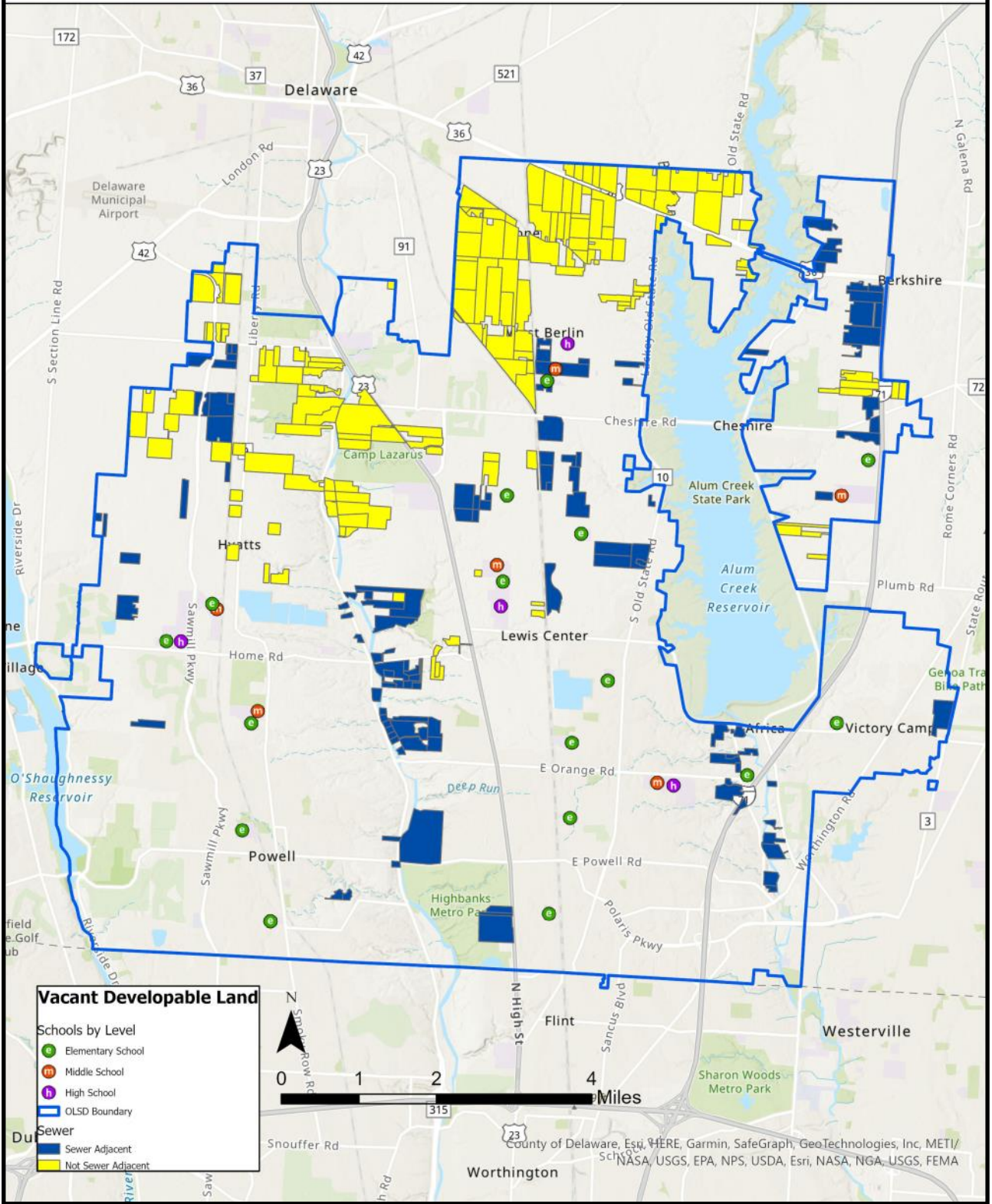
Sewer & Water Infrastructure and Vacant Developable Land

Sewer and water infrastructure is an important consideration for developing communities. Not only can it drive economic and residential development, it can also be considered as an investment in communities that are eager to grow. The installation of this infrastructure can be costly; one must also consider that wastewater treatment plants have a maximum capacity, and improvements need to be made once the maximum capacity is reached. Along with this, sewer and water require different infrastructure, and often water lines can be installed more quickly than sewer due to the sewer requiring additional systems such as lift stations and water reclamation plants.

While this infrastructure is not *required* for housing developments, it is typically utilized for any higher-density housing. This information was used in conjunction with land use data to establish the likelihood of each parcel to become developed.

Currently, there are 7,275 acres of undeveloped land within the District. Of this, 2,599 acres are considered to be highly likely to develop in the near future. This includes tracts of land adjacent to sewer and water infrastructure. Four different models were created to build-out these parcels, 400 units/year, 500 units/year, 600 units/year, and 700 units/year. These values are based on historic number of homes built each year, obtained from the Delaware and Franklin county auditors, which can be found on page 30. The map on the following page illustrates the locations of the developable land, and which tracts of land are currently adjacent to existing infrastructure.

Olentangy Local School District: Vacant Developable Land

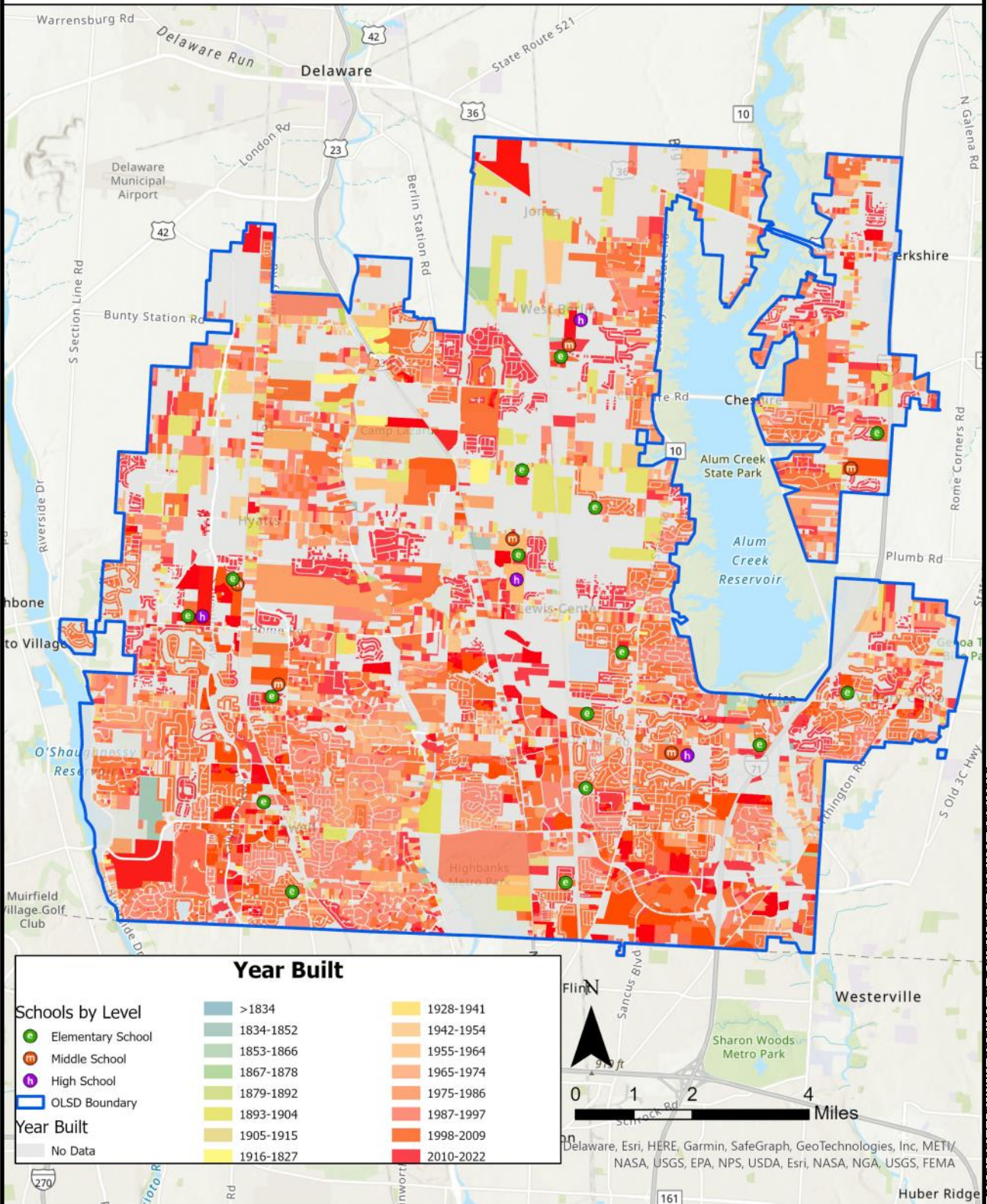


Housing by Year Built

The map on the following page shows the year that homes were built within the District. The color of each parcel shows the year that the home was built. Blue to yellow colors show older homes and orange to red colors show newer homes, as illustrated in the legend below. The table on the right shows the number of single-family units built each year, ranging back to 1988. This data was analyzed to determine the building paces for undeveloped land. Please note that 2022 data is still considered preliminary at the time of this report.

S-F Homes by Year Built	Units Built
<1988	1,807
1988	318
1989	219
1990	176
1991	224
1992	286
1993	497
1994	649
1995	429
1996	719
1997	853
1998	833
1999	1,428
2000	1,156
2001	1,274
2002	1,408
2003	1,350
2004	1,476
2005	1,240
2006	662
2007	575
2008	312
2009	268
2010	339
2011	362
2012	452
2013	530
2014	443
2015	439
2016	536
2017	509
2018	539
2019	551
2020	505
2021	605
2022	19

Olentangy Local School District: Parcels by Year Built



Maximum Enrollment
 Mature Enrollment

STUDENT POTENTIAL

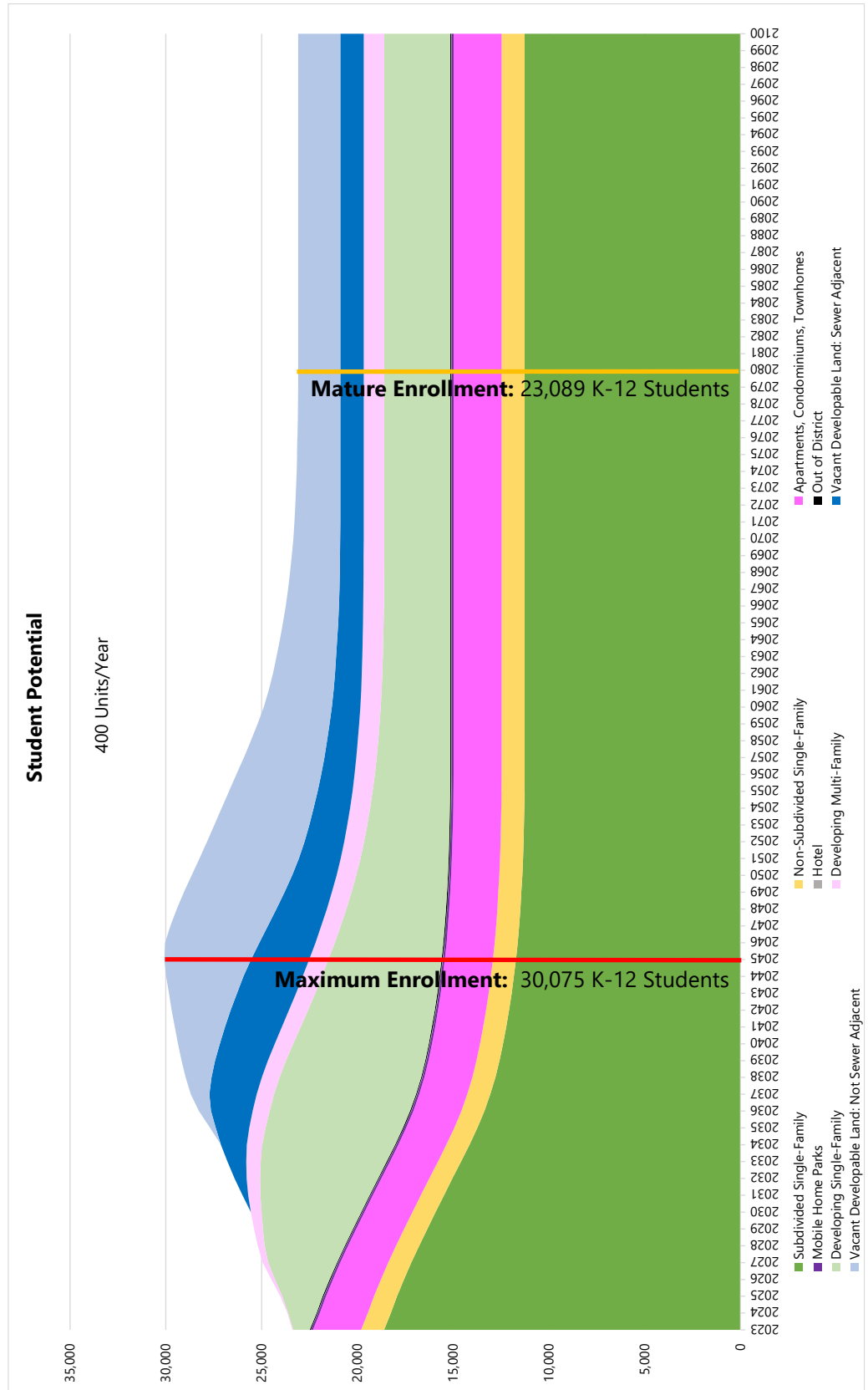
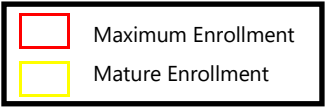
400 Units per Year

The table below and on the following pages illustrate the complete student potential for the **400 units / year** building pace based on the yield model. The maximum enrollment year is 2045 with an enrollment of 30,075; this occurs when the majority of homes are in the higher yield stages of the life cycle. The mature enrollment is in the year 2080 with an enrollment of 23,089. Both the maximum and mature enrollments assume that 400 single-family homes will be built each year until the District is completely built-out. The graph on page 34 illustrates the student potential to the year 2100. Each color in the graph corresponds to a different housing type seen in the table below.

Year	Subdivided Single-Family	Non-Subdivided Single-Family	Multi-Family	Mobile Home Parks	Hotel	Developing Single-Family	Developing Multi-Family	Out of District	Vacant Developable Land: Sewer Adjacent	Vacant Developable Land: Not Sewer Adjacent	Total
2023	18,608	1,203	2,509	102	17	864	38	51	-	-	23,392
2024	18,251	1,203	2,509	102	17	1,484	36	51	-	-	23,654
2025	17,929	1,203	2,509	102	17	2,111	106	51	-	-	24,027
2026	17,568	1,203	2,509	102	17	2,853	188	51	-	-	24,490
2027	17,188	1,203	2,509	102	17	3,589	279	51	-	-	24,938
2028	16,778	1,203	2,509	102	17	4,176	364	51	-	-	25,200
2029	16,352	1,203	2,509	102	17	4,697	465	51	-	-	25,396
2030	15,920	1,203	2,509	102	17	5,195	561	51	-	-	25,558
2031	15,483	1,203	2,509	102	17	5,692	641	51	296	-	25,994
2032	15,040	1,203	2,509	102	17	6,158	707	51	624	-	26,411
2033	14,592	1,203	2,509	102	17	6,568	763	51	976	-	26,781
2034	14,151	1,203	2,509	102	17	6,932	804	51	1,356	-	27,125
2035	13,742	1,203	2,509	102	17	7,171	844	51	1,756	296	27,692
2036	13,371	1,203	2,509	102	17	7,328	883	51	2,180	624	28,268
2037	13,061	1,203	2,509	102	17	7,406	904	51	2,471	976	28,700
2038	12,793	1,203	2,509	102	17	7,389	926	51	2,619	1,356	28,966
2039	12,580	1,203	2,509	102	17	7,264	947	51	2,751	1,756	29,181
2040	12,395	1,203	2,509	102	17	7,072	964	51	2,869	2,180	29,363
2041	12,230	1,203	2,509	102	17	6,847	979	51	2,971	2,620	29,530
2042	12,082	1,203	2,509	102	17	6,612	993	51	3,045	3,080	29,694
2043	11,947	1,203	2,509	102	17	6,375	997	51	3,085	3,552	29,838
2044	11,833	1,203	2,509	102	17	6,147	1,002	51	3,083	4,036	29,983
2045	11,727	1,203	2,509	102	17	5,907	1,007	51	3,025	4,528	30,075
2046	11,632	1,203	2,509	102	17	5,663	1,011	51	2,927	4,922	30,038
2047	11,559	1,203	2,509	102	17	5,430	1,016	51	2,787	5,088	29,762
2048	11,495	1,203	2,509	102	17	5,199	1,020	51	2,630	5,201	29,427
2049	11,442	1,203	2,509	102	17	4,985	1,025	51	2,471	5,248	29,053
2050	11,394	1,203	2,509	102	17	4,779	1,030	51	2,319	5,242	28,646
2051	11,355	1,203	2,509	102	17	4,598	1,034	51	2,187	5,183	28,239
2052	11,328	1,203	2,509	102	17	4,439	1,039	51	2,073	5,086	27,847
2053	11,305	1,203	2,509	102	17	4,295	1,043	51	1,981	4,959	27,467
2054	11,288	1,203	2,509	102	17	4,163	1,048	51	1,901	4,804	27,086
2055	11,277	1,203	2,509	102	17	4,043	1,053	51	1,819	4,624	26,698
2056	11,271	1,203	2,509	102	17	3,937	1,057	51	1,741	4,417	26,306
2057	11,271	1,203	2,509	102	17	3,845	1,062	51	1,667	4,199	25,926
2058	11,271	1,203	2,509	102	17	3,761	1,066	51	1,604	3,978	25,561
2059	11,271	1,203	2,509	102	17	3,689	1,071	51	1,544	3,757	25,214
2060	11,271	1,203	2,509	102	17	3,630	1,062	51	1,486	3,558	24,887
2061	11,271	1,203	2,509	102	17	3,583	1,066	51	1,438	3,386	24,625
2062	11,271	1,203	2,509	102	17	3,546	1,071	51	1,398	3,240	24,407
2063	11,271	1,203	2,509	102	17	3,518	1,076	51	1,362	3,113	24,221
2064	11,271	1,203	2,509	102	17	3,496	1,078	51	1,328	2,993	24,046
2065	11,271	1,203	2,509	102	17	3,478	1,078	51	1,296	2,881	23,885
2066	11,271	1,203	2,509	102	17	3,465	1,078	51	1,272	2,776	23,743

Maximum Enrollment
 Mature Enrollment

Year	Subdivided Single-Family	Non-Subdivided Single-Family	Multi-Family	Mobile Home Parks	Hotel	Developing Single-Family	Developing Multi-Family	Out of District	Vacant Developable Land: Sewer Adjacent	Vacant Developable Land: Not Sewer Adjacent	Total
2067	11,271	1,203	2,509	102	17	3,455	1,078	51	1,254	2,681	23,620
2068	11,271	1,203	2,509	102	17	3,449	1,078	51	1,239	2,596	23,514
2069	11,271	1,203	2,509	102	17	3,445	1,078	51	1,229	2,515	23,420
2070	11,271	1,203	2,509	102	17	3,443	1,078	51	1,223	2,448	23,345
2071	11,271	1,203	2,509	102	17	3,441	1,078	51	1,221	2,395	23,288
2072	11,271	1,203	2,509	102	17	3,441	1,078	51	1,221	2,349	23,241
2073	11,271	1,203	2,509	102	17	3,441	1,078	51	1,221	2,310	23,202
2074	11,271	1,203	2,509	102	17	3,441	1,078	51	1,221	2,277	23,169
2075	11,271	1,203	2,509	102	17	3,441	1,078	51	1,221	2,251	23,143
2076	11,271	1,203	2,509	102	17	3,441	1,078	51	1,221	2,232	23,124
2077	11,271	1,203	2,509	102	17	3,441	1,078	51	1,221	2,217	23,110
2078	11,271	1,203	2,509	102	17	3,441	1,078	51	1,221	2,207	23,099
2079	11,271	1,203	2,509	102	17	3,441	1,078	51	1,221	2,200	23,092
2080	11,271	1,203	2,509	102	17	3,441	1,078	51	1,221	2,197	23,089
2081	11,271	1,203	2,509	102	17	3,441	1,078	51	1,221	2,197	23,089
2082	11,271	1,203	2,509	102	17	3,441	1,078	51	1,221	2,197	23,089
2083	11,271	1,203	2,509	102	17	3,441	1,078	51	1,221	2,197	23,089
2084	11,271	1,203	2,509	102	17	3,441	1,078	51	1,221	2,197	23,089
2085	11,271	1,203	2,509	102	17	3,441	1,078	51	1,221	2,197	23,089
2086	11,271	1,203	2,509	102	17	3,441	1,078	51	1,221	2,197	23,089
2087	11,271	1,203	2,509	102	17	3,441	1,078	51	1,221	2,197	23,089
2088	11,271	1,203	2,509	102	17	3,441	1,078	51	1,221	2,197	23,089
2089	11,271	1,203	2,509	102	17	3,441	1,078	51	1,221	2,197	23,089
2090	11,271	1,203	2,509	102	17	3,441	1,078	51	1,221	2,197	23,089
2091	11,271	1,203	2,509	102	17	3,441	1,078	51	1,221	2,197	23,089
2092	11,271	1,203	2,509	102	17	3,441	1,078	51	1,221	2,197	23,089
2093	11,271	1,203	2,509	102	17	3,441	1,078	51	1,221	2,197	23,089
2094	11,271	1,203	2,509	102	17	3,441	1,078	51	1,221	2,197	23,089
2095	11,271	1,203	2,509	102	17	3,441	1,078	51	1,221	2,197	23,089
2096	11,271	1,203	2,509	102	17	3,441	1,078	51	1,221	2,197	23,089
2097	11,271	1,203	2,509	102	17	3,441	1,078	51	1,221	2,197	23,089
2098	11,271	1,203	2,509	102	17	3,441	1,078	51	1,221	2,197	23,089
2099	11,271	1,203	2,509	102	17	3,441	1,078	51	1,221	2,197	23,089
2100	11,271	1,203	2,509	102	17	3,441	1,078	51	1,221	2,197	23,089



Maximum Enrollment
 Mature Enrollment

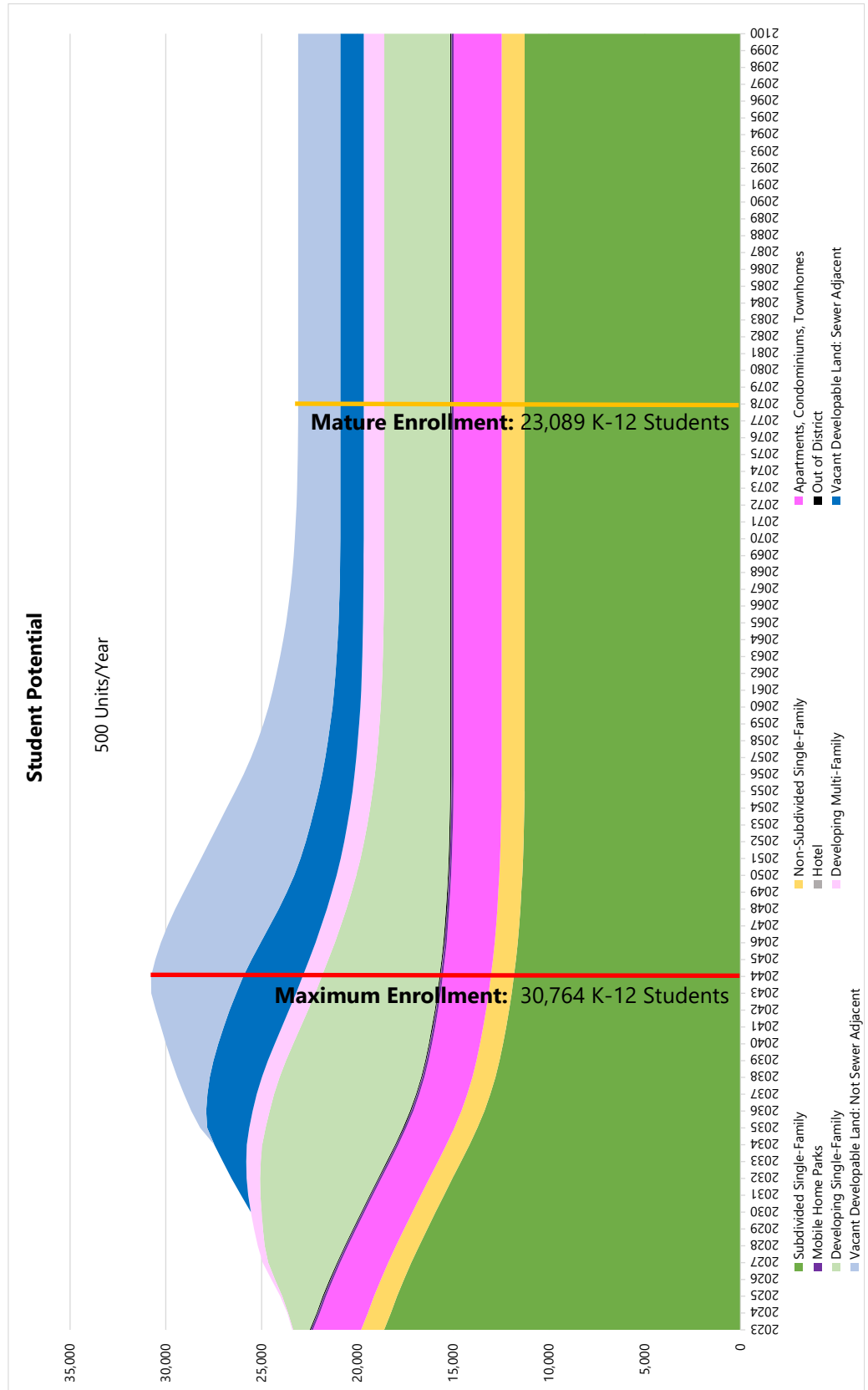
500 Units per Year

The table below and on the following pages illustrate the complete student potential for the **500 units / year** building pace based on the yield model. The maximum enrollment year is 2044 with an enrollment of 30,764; this occurs when the majority of homes are in the higher yield stages of the life cycle. The mature enrollment is in the year 2078 with an enrollment of 23,089. Both the maximum and mature enrollments assume that 500 single-family homes will be built each year until the District is completely built-out. The graph on page 37 illustrates the student potential to the year 2100. Each color in the graph corresponds to a different housing type seen in the table below.

Year	Subdivided Single-Family	Non-Subdivided Single-Family	Multi-Family	Mobile Home Parks	Hotel	Developing Single-Family	Developing Multi-Family	Out of District	Vacant Developable Land: Sewer Adjacent	Vacant Developable Land: Not Sewer Adjacent	Total
2023	18,608	1,203	2,509	102	17	864	38	51	-	-	23,392
2024	18,251	1,203	2,509	102	17	1,484	36	51	-	-	23,654
2025	17,929	1,203	2,509	102	17	2,111	106	51	-	-	24,027
2026	17,568	1,203	2,509	102	17	2,853	188	51	-	-	24,490
2027	17,188	1,203	2,509	102	17	3,589	279	51	-	-	24,938
2028	16,778	1,203	2,509	102	17	4,176	364	51	-	-	25,200
2029	16,352	1,203	2,509	102	17	4,697	465	51	-	-	25,396
2030	15,920	1,203	2,509	102	17	5,195	561	51	-	-	25,558
2031	15,483	1,203	2,509	102	17	5,692	641	51	370	-	26,068
2032	15,040	1,203	2,509	102	17	6,158	707	51	780	-	26,567
2033	14,592	1,203	2,509	102	17	6,568	763	51	1,220	-	27,025
2034	14,151	1,203	2,509	102	17	6,932	804	51	1,695	-	27,464
2035	13,742	1,203	2,509	102	17	7,171	844	51	2,195	370	28,205
2036	13,371	1,203	2,509	102	17	7,328	883	51	2,428	780	28,673
2037	13,061	1,203	2,509	102	17	7,406	904	51	2,576	1,220	29,049
2038	12,793	1,203	2,509	102	17	7,389	926	51	2,717	1,695	29,403
2039	12,580	1,203	2,509	102	17	7,264	947	51	2,839	2,195	29,708
2040	12,395	1,203	2,509	102	17	7,072	964	51	2,949	2,725	29,987
2041	12,230	1,203	2,509	102	17	6,847	979	51	3,040	3,275	30,254
2042	12,082	1,203	2,509	102	17	6,612	993	51	3,102	3,850	30,520
2043	11,947	1,203	2,509	102	17	6,375	997	51	3,122	4,440	30,763
2044	11,833	1,203	2,509	102	17	6,147	1,002	51	3,095	4,805	30,764
2045	11,727	1,203	2,509	102	17	5,907	1,007	51	3,003	5,024	30,549
2046	11,632	1,203	2,509	102	17	5,663	1,011	51	2,865	5,202	30,256
2047	11,559	1,203	2,509	102	17	5,430	1,016	51	2,691	5,330	29,907
2048	11,495	1,203	2,509	102	17	5,199	1,020	51	2,512	5,399	29,507
2049	11,442	1,203	2,509	102	17	4,985	1,025	51	2,346	5,389	29,069
2050	11,394	1,203	2,509	102	17	4,779	1,030	51	2,211	5,321	28,617
2051	11,355	1,203	2,509	102	17	4,598	1,034	51	2,099	5,190	28,159
2052	11,328	1,203	2,509	102	17	4,439	1,039	51	2,006	5,020	27,714
2053	11,305	1,203	2,509	102	17	4,295	1,043	51	1,927	4,820	27,274
2054	11,288	1,203	2,509	102	17	4,163	1,048	51	1,849	4,594	26,825
2055	11,277	1,203	2,509	102	17	4,043	1,053	51	1,766	4,354	26,375
2056	11,271	1,203	2,509	102	17	3,937	1,057	51	1,688	4,108	25,943
2057	11,271	1,203	2,509	102	17	3,845	1,062	51	1,620	3,877	25,556
2058	11,271	1,203	2,509	102	17	3,761	1,066	51	1,558	3,675	25,212
2059	11,271	1,203	2,509	102	17	3,689	1,071	51	1,500	3,492	24,905
2060	11,271	1,203	2,509	102	17	3,630	1,062	51	1,451	3,338	24,633
2061	11,271	1,203	2,509	102	17	3,583	1,066	51	1,409	3,201	24,411
2062	11,271	1,203	2,509	102	17	3,546	1,071	51	1,372	3,076	24,217
2063	11,271	1,203	2,509	102	17	3,518	1,076	51	1,336	2,956	24,037
2064	11,271	1,203	2,509	102	17	3,496	1,078	51	1,304	2,840	23,870
2065	11,271	1,203	2,509	102	17	3,478	1,078	51	1,277	2,738	23,723
2066	11,271	1,203	2,509	102	17	3,465	1,078	51	1,256	2,645	23,595

	Maximum Enrollment
	Mature Enrollment

Year	Subdivided Single-Family	Non-Subdivided Single-Family	Multi-Family	Mobile Home Parks	Hotel	Developing Single-Family	Developing Multi-Family	Out of District	Vacant Developable Land: Sewer Adjacent	Vacant Developable Land: Not Sewer Adjacent	Total
2067	11,271	1,203	2,509	102	17	3,455	1,078	51	1,239	2,559	23,484
2068	11,271	1,203	2,509	102	17	3,449	1,078	51	1,228	2,487	23,395
2069	11,271	1,203	2,509	102	17	3,445	1,078	51	1,222	2,424	23,322
2070	11,271	1,203	2,509	102	17	3,443	1,078	51	1,221	2,370	23,264
2071	11,271	1,203	2,509	102	17	3,441	1,078	51	1,221	2,323	23,216
2072	11,271	1,203	2,509	102	17	3,441	1,078	51	1,221	2,285	23,177
2073	11,271	1,203	2,509	102	17	3,441	1,078	51	1,221	2,256	23,148
2074	11,271	1,203	2,509	102	17	3,441	1,078	51	1,221	2,234	23,126
2075	11,271	1,203	2,509	102	17	3,441	1,078	51	1,221	2,218	23,110
2076	11,271	1,203	2,509	102	17	3,441	1,078	51	1,221	2,206	23,098
2077	11,271	1,203	2,509	102	17	3,441	1,078	51	1,221	2,199	23,091
2078	11,271	1,203	2,509	102	17	3,441	1,078	51	1,221	2,197	23,089
2079	11,271	1,203	2,509	102	17	3,441	1,078	51	1,221	2,197	23,089
2080	11,271	1,203	2,509	102	17	3,441	1,078	51	1,221	2,197	23,089
2081	11,271	1,203	2,509	102	17	3,441	1,078	51	1,221	2,197	23,089
2082	11,271	1,203	2,509	102	17	3,441	1,078	51	1,221	2,197	23,089
2083	11,271	1,203	2,509	102	17	3,441	1,078	51	1,221	2,197	23,089
2084	11,271	1,203	2,509	102	17	3,441	1,078	51	1,221	2,197	23,089
2085	11,271	1,203	2,509	102	17	3,441	1,078	51	1,221	2,197	23,089
2086	11,271	1,203	2,509	102	17	3,441	1,078	51	1,221	2,197	23,089
2087	11,271	1,203	2,509	102	17	3,441	1,078	51	1,221	2,197	23,089
2088	11,271	1,203	2,509	102	17	3,441	1,078	51	1,221	2,197	23,089
2089	11,271	1,203	2,509	102	17	3,441	1,078	51	1,221	2,197	23,089
2090	11,271	1,203	2,509	102	17	3,441	1,078	51	1,221	2,197	23,089
2091	11,271	1,203	2,509	102	17	3,441	1,078	51	1,221	2,197	23,089
2092	11,271	1,203	2,509	102	17	3,441	1,078	51	1,221	2,197	23,089
2093	11,271	1,203	2,509	102	17	3,441	1,078	51	1,221	2,197	23,089
2094	11,271	1,203	2,509	102	17	3,441	1,078	51	1,221	2,197	23,089
2095	11,271	1,203	2,509	102	17	3,441	1,078	51	1,221	2,197	23,089
2096	11,271	1,203	2,509	102	17	3,441	1,078	51	1,221	2,197	23,089
2097	11,271	1,203	2,509	102	17	3,441	1,078	51	1,221	2,197	23,089
2098	11,271	1,203	2,509	102	17	3,441	1,078	51	1,221	2,197	23,089
2099	11,271	1,203	2,509	102	17	3,441	1,078	51	1,221	2,197	23,089
2100	11,271	1,203	2,509	102	17	3,441	1,078	51	1,221	2,197	23,089



	Maximum Enrollment
	Mature Enrollment

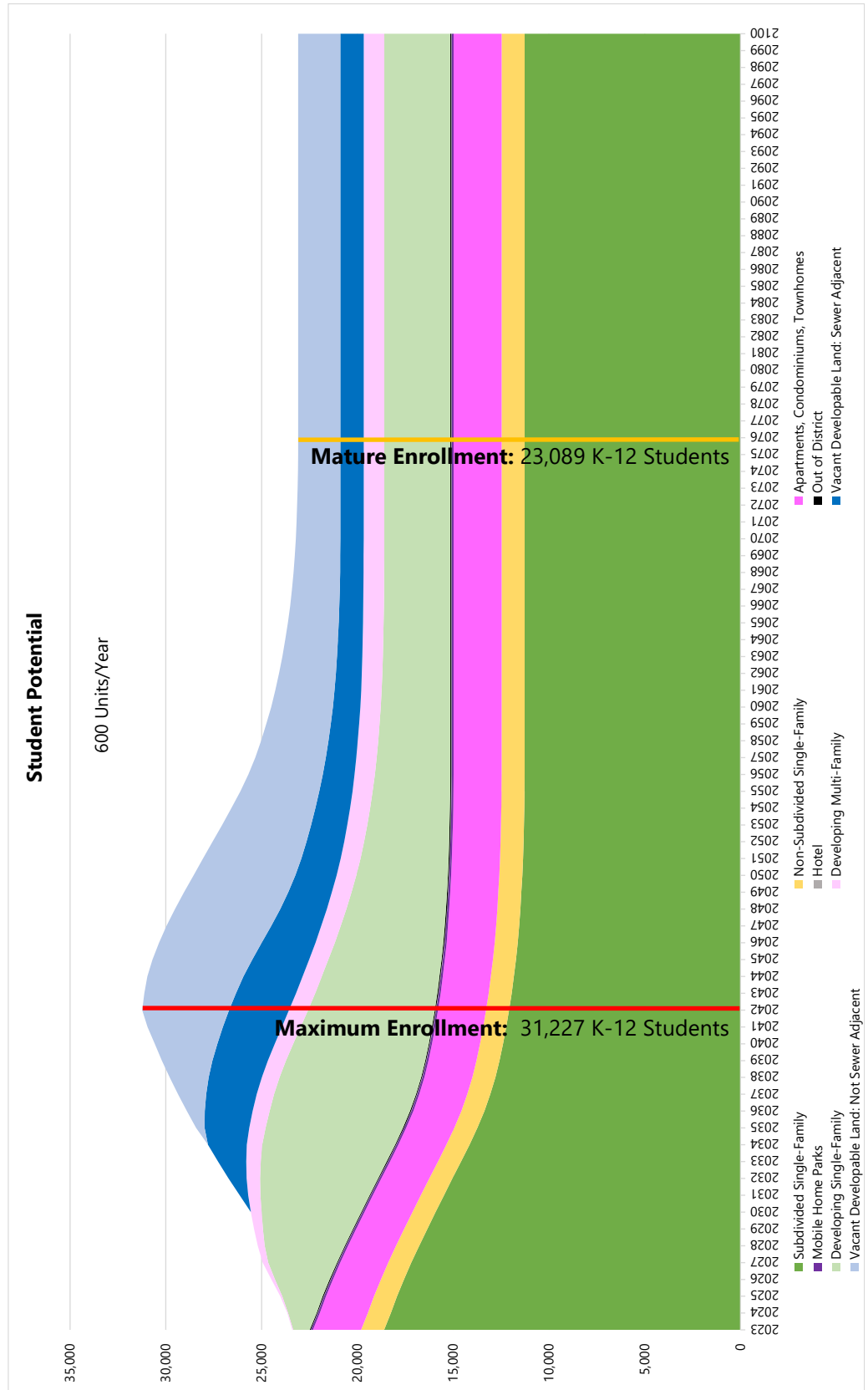
600 Units per Year

The table below and on the following pages illustrate the complete student potential for the **600 units / year** building pace based on the yield model. The maximum enrollment year is 2042 with an enrollment of 31,227; this occurs when the majority of homes are in the higher yield stages of the life cycle. The mature enrollment is in the year 2076 with an enrollment of 23,089. Both the maximum and mature enrollments assume that 600 single-family homes will be built each year until the District is completely built-out. The graph on page 40 illustrates the student potential to the year 2100. Each color in the graph corresponds to a different housing type seen in the table below.

Year	Subdivided Single-Family	Non-Subdivided Single-Family	Multi-Family	Mobile Home Parks	Hotel	Developing Single-Family	Developing Multi-Family	Out of District	Vacant Developable Land: Sewer Adjacent	Vacant Developable Land: Not Sewer Adjacent	Total
2023	18,608	1,203	2,509	102	17	864	38	51	-	-	23,392
2024	18,251	1,203	2,509	102	17	1,484	36	51	-	-	23,654
2025	17,929	1,203	2,509	102	17	2,111	106	51	-	-	24,027
2026	17,568	1,203	2,509	102	17	2,853	188	51	-	-	24,490
2027	17,188	1,203	2,509	102	17	3,589	279	51	-	-	24,938
2028	16,778	1,203	2,509	102	17	4,176	364	51	-	-	25,200
2029	16,352	1,203	2,509	102	17	4,697	465	51	-	-	25,396
2030	15,920	1,203	2,509	102	17	5,195	561	51	-	-	25,558
2031	15,483	1,203	2,509	102	17	5,692	641	51	444	-	26,142
2032	15,040	1,203	2,509	102	17	6,158	707	51	936	-	26,723
2033	14,592	1,203	2,509	102	17	6,568	763	51	1,464	-	27,269
2034	14,151	1,203	2,509	102	17	6,932	804	51	2,034	-	27,803
2035	13,742	1,203	2,509	102	17	7,171	844	51	2,337	444	28,422
2036	13,371	1,203	2,509	102	17	7,328	883	51	2,497	936	28,898
2037	13,061	1,203	2,509	102	17	7,406	904	51	2,641	1,464	29,358
2038	12,793	1,203	2,509	102	17	7,389	926	51	2,775	2,034	29,800
2039	12,580	1,203	2,509	102	17	7,264	947	51	2,893	2,634	30,201
2040	12,395	1,203	2,509	102	17	7,072	964	51	2,995	3,270	30,578
2041	12,230	1,203	2,509	102	17	6,847	979	51	3,081	3,930	30,950
2042	12,082	1,203	2,509	102	17	6,612	993	51	3,130	4,528	31,227
2043	11,947	1,203	2,509	102	17	6,375	997	51	3,136	4,782	31,119
2044	11,833	1,203	2,509	102	17	6,147	1,002	51	3,088	5,009	30,961
2045	11,727	1,203	2,509	102	17	5,907	1,007	51	2,966	5,210	30,698
2046	11,632	1,203	2,509	102	17	5,663	1,011	51	2,804	5,363	30,356
2047	11,559	1,203	2,509	102	17	5,430	1,016	51	2,611	5,464	29,961
2048	11,495	1,203	2,509	102	17	5,199	1,020	51	2,425	5,495	29,516
2049	11,442	1,203	2,509	102	17	4,985	1,025	51	2,273	5,440	29,048
2050	11,394	1,203	2,509	102	17	4,779	1,030	51	2,151	5,317	28,553
2051	11,355	1,203	2,509	102	17	4,598	1,034	51	2,057	5,127	28,054
2052	11,328	1,203	2,509	102	17	4,439	1,039	51	1,971	4,896	27,556
2053	11,305	1,203	2,509	102	17	4,295	1,043	51	1,893	4,640	27,060
2054	11,288	1,203	2,509	102	17	4,163	1,048	51	1,815	4,378	26,574
2055	11,277	1,203	2,509	102	17	4,043	1,053	51	1,731	4,121	26,107
2056	11,271	1,203	2,509	102	17	3,937	1,057	51	1,658	3,882	25,686
2057	11,271	1,203	2,509	102	17	3,845	1,062	51	1,588	3,686	25,333
2058	11,271	1,203	2,509	102	17	3,761	1,066	51	1,528	3,516	25,024
2059	11,271	1,203	2,509	102	17	3,689	1,071	51	1,478	3,365	24,756
2060	11,271	1,203	2,509	102	17	3,630	1,062	51	1,432	3,225	24,501
2061	11,271	1,203	2,509	102	17	3,583	1,066	51	1,392	3,091	24,284
2062	11,271	1,203	2,509	102	17	3,546	1,071	51	1,354	2,968	24,091
2063	11,271	1,203	2,509	102	17	3,518	1,076	51	1,320	2,853	23,919
2064	11,271	1,203	2,509	102	17	3,496	1,078	51	1,292	2,748	23,765
2065	11,271	1,203	2,509	102	17	3,478	1,078	51	1,266	2,649	23,624
2066	11,271	1,203	2,509	102	17	3,465	1,078	51	1,246	2,564	23,505

Maximum Enrollment
 Mature Enrollment

Year	Subdivided Single-Family	Non-Subdivided Single-Family	Multi-Family	Mobile Home Parks	Hotel	Developing Single-Family	Developing Multi-Family	Out of District	Vacant Developable Land: Sewer Adjacent	Vacant Developable Land: Not Sewer Adjacent	Total
2067	11,271	1,203	2,509	102	17	3,455	1,078	51	1,231	2,495	23,412
2068	11,271	1,203	2,509	102	17	3,449	1,078	51	1,223	2,431	23,334
2069	11,271	1,203	2,509	102	17	3,445	1,078	51	1,221	2,373	23,269
2070	11,271	1,203	2,509	102	17	3,443	1,078	51	1,221	2,321	23,215
2071	11,271	1,203	2,509	102	17	3,441	1,078	51	1,221	2,281	23,174
2072	11,271	1,203	2,509	102	17	3,441	1,078	51	1,221	2,252	23,145
2073	11,271	1,203	2,509	102	17	3,441	1,078	51	1,221	2,230	23,122
2074	11,271	1,203	2,509	102	17	3,441	1,078	51	1,221	2,213	23,105
2075	11,271	1,203	2,509	102	17	3,441	1,078	51	1,221	2,202	23,094
2076	11,271	1,203	2,509	102	17	3,441	1,078	51	1,221	2,197	23,089
2077	11,271	1,203	2,509	102	17	3,441	1,078	51	1,221	2,197	23,089
2078	11,271	1,203	2,509	102	17	3,441	1,078	51	1,221	2,197	23,089
2079	11,271	1,203	2,509	102	17	3,441	1,078	51	1,221	2,197	23,089
2080	11,271	1,203	2,509	102	17	3,441	1,078	51	1,221	2,197	23,089
2081	11,271	1,203	2,509	102	17	3,441	1,078	51	1,221	2,197	23,089
2082	11,271	1,203	2,509	102	17	3,441	1,078	51	1,221	2,197	23,089
2083	11,271	1,203	2,509	102	17	3,441	1,078	51	1,221	2,197	23,089
2084	11,271	1,203	2,509	102	17	3,441	1,078	51	1,221	2,197	23,089
2085	11,271	1,203	2,509	102	17	3,441	1,078	51	1,221	2,197	23,089
2086	11,271	1,203	2,509	102	17	3,441	1,078	51	1,221	2,197	23,089
2087	11,271	1,203	2,509	102	17	3,441	1,078	51	1,221	2,197	23,089
2088	11,271	1,203	2,509	102	17	3,441	1,078	51	1,221	2,197	23,089
2089	11,271	1,203	2,509	102	17	3,441	1,078	51	1,221	2,197	23,089
2090	11,271	1,203	2,509	102	17	3,441	1,078	51	1,221	2,197	23,089
2091	11,271	1,203	2,509	102	17	3,441	1,078	51	1,221	2,197	23,089
2092	11,271	1,203	2,509	102	17	3,441	1,078	51	1,221	2,197	23,089
2093	11,271	1,203	2,509	102	17	3,441	1,078	51	1,221	2,197	23,089
2094	11,271	1,203	2,509	102	17	3,441	1,078	51	1,221	2,197	23,089
2095	11,271	1,203	2,509	102	17	3,441	1,078	51	1,221	2,197	23,089
2096	11,271	1,203	2,509	102	17	3,441	1,078	51	1,221	2,197	23,089
2097	11,271	1,203	2,509	102	17	3,441	1,078	51	1,221	2,197	23,089
2098	11,271	1,203	2,509	102	17	3,441	1,078	51	1,221	2,197	23,089
2099	11,271	1,203	2,509	102	17	3,441	1,078	51	1,221	2,197	23,089
2100	11,271	1,203	2,509	102	17	3,441	1,078	51	1,221	2,197	23,089



Maximum Enrollment
 Mature Enrollment

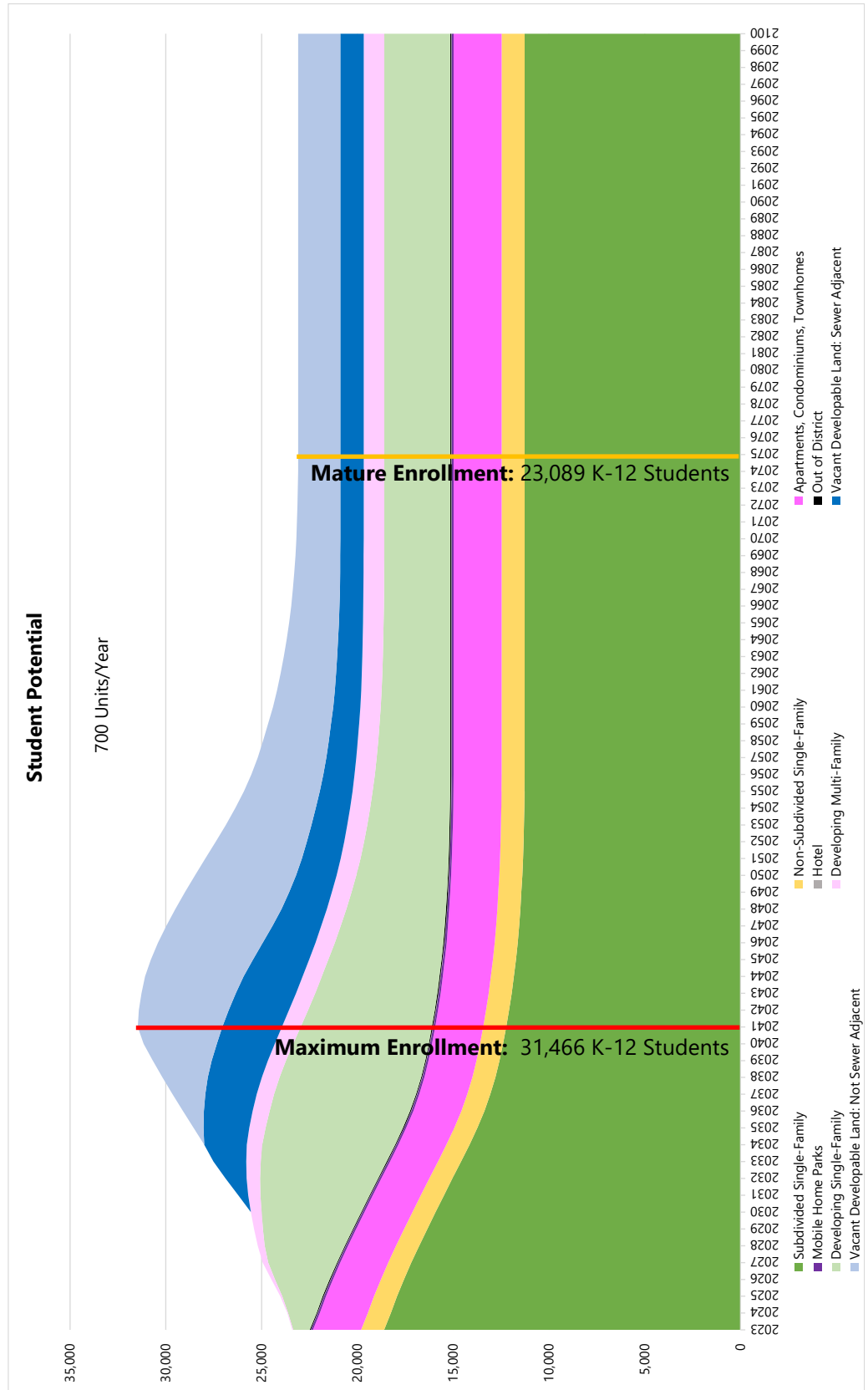
700 Units per Year

The table below and on the following pages illustrate the complete student potential for the **700 units / year** building pace based on the yield model. The maximum enrollment year is 2041 with an enrollment of 31,466; this occurs when the majority of homes are in the higher yield stages of the life cycle. The mature enrollment is in the year 2075 with an enrollment of 23,089. Both the maximum and mature enrollments assume that 700 single-family homes will be built each year until the District is completely built-out. The graph on page 43 illustrates the student potential to the year 2100. Each color in the graph corresponds to a different housing type seen in the table below.

Year	Subdivided Single-Family	Non-Subdivided Single-Family	Multi-Family	Mobile Home Parks	Hotel	Developing Single-Family	Developing Multi-Family	Out of District	Vacant Developable Land: Sewer Adjacent	Vacant Developable Land: Not Sewer Adjacent	Total
2023	18,608	1,203	2,509	102	17	864	38	51	-	-	23,392
2024	18,251	1,203	2,509	102	17	1,484	36	51	-	-	23,654
2025	17,929	1,203	2,509	102	17	2,111	106	51	-	-	24,027
2026	17,568	1,203	2,509	102	17	2,853	188	51	-	-	24,490
2027	17,188	1,203	2,509	102	17	3,589	279	51	-	-	24,938
2028	16,778	1,203	2,509	102	17	4,176	364	51	-	-	25,200
2029	16,352	1,203	2,509	102	17	4,697	465	51	-	-	25,396
2030	15,920	1,203	2,509	102	17	5,195	561	51	-	-	25,558
2031	15,483	1,203	2,509	102	17	5,692	641	51	518	-	26,216
2032	15,040	1,203	2,509	102	17	6,158	707	51	1,092	-	26,879
2033	14,592	1,203	2,509	102	17	6,568	763	51	1,708	-	27,513
2034	14,151	1,203	2,509	102	17	6,932	804	51	2,224	-	27,994
2035	13,742	1,203	2,509	102	17	7,171	844	51	2,390	518	28,548
2036	13,371	1,203	2,509	102	17	7,328	883	51	2,546	1,092	29,103
2037	13,061	1,203	2,509	102	17	7,406	904	51	2,686	1,708	29,647
2038	12,793	1,203	2,509	102	17	7,389	926	51	2,816	2,373	30,180
2039	12,580	1,203	2,509	102	17	7,264	947	51	2,930	3,073	30,677
2040	12,395	1,203	2,509	102	17	7,072	964	51	3,027	3,815	31,155
2041	12,230	1,203	2,509	102	17	6,847	979	51	3,108	4,419	31,466
2042	12,082	1,203	2,509	102	17	6,612	993	51	3,148	4,688	31,404
2043	11,947	1,203	2,509	102	17	6,375	997	51	3,142	4,927	31,269
2044	11,833	1,203	2,509	102	17	6,147	1,002	51	3,075	5,142	31,081
2045	11,727	1,203	2,509	102	17	5,907	1,007	51	2,931	5,327	30,779
2046	11,632	1,203	2,509	102	17	5,663	1,011	51	2,752	5,464	30,405
2047	11,559	1,203	2,509	102	17	5,430	1,016	51	2,547	5,539	29,973
2048	11,495	1,203	2,509	102	17	5,199	1,020	51	2,364	5,542	29,502
2049	11,442	1,203	2,509	102	17	4,985	1,025	51	2,224	5,444	29,003
2050	11,394	1,203	2,509	102	17	4,779	1,030	51	2,114	5,276	28,476
2051	11,355	1,203	2,509	102	17	4,598	1,034	51	2,031	5,034	27,935
2052	11,328	1,203	2,509	102	17	4,439	1,039	51	1,946	4,757	27,392
2053	11,305	1,203	2,509	102	17	4,295	1,043	51	1,868	4,475	26,869
2054	11,288	1,203	2,509	102	17	4,163	1,048	51	1,790	4,201	26,373
2055	11,277	1,203	2,509	102	17	4,043	1,053	51	1,708	3,958	25,920
2056	11,271	1,203	2,509	102	17	3,937	1,057	51	1,635	3,749	25,530
2057	11,271	1,203	2,509	102	17	3,845	1,062	51	1,564	3,578	25,201
2058	11,271	1,203	2,509	102	17	3,761	1,066	51	1,509	3,433	24,922
2059	11,271	1,203	2,509	102	17	3,689	1,071	51	1,464	3,286	24,662
2060	11,271	1,203	2,509	102	17	3,630	1,062	51	1,419	3,146	24,408
2061	11,271	1,203	2,509	102	17	3,583	1,066	51	1,379	3,012	24,193
2062	11,271	1,203	2,509	102	17	3,546	1,071	51	1,341	2,895	24,005
2063	11,271	1,203	2,509	102	17	3,518	1,076	51	1,310	2,788	23,843
2064	11,271	1,203	2,509	102	17	3,496	1,078	51	1,284	2,682	23,692
2065	11,271	1,203	2,509	102	17	3,478	1,078	51	1,258	2,593	23,560
2066	11,271	1,203	2,509	102	17	3,465	1,078	51	1,239	2,521	23,455

	Maximum Enrollment
	Mature Enrollment

Year	Subdivided Single-Family	Non-Subdivided Single-Family	Multi-Family	Mobile Home Parks	Hotel	Developing Single-Family	Developing Multi-Family	Out of District	Vacant Developable Land: Sewer Adjacent	Vacant Developable Land: Not Sewer Adjacent	Total
2067	11,271	1,203	2,509	102	17	3,455	1,078	51	1,226	2,455	23,367
2068	11,271	1,203	2,509	102	17	3,449	1,078	51	1,221	2,395	23,295
2069	11,271	1,203	2,509	102	17	3,445	1,078	51	1,221	2,336	23,233
2070	11,271	1,203	2,509	102	17	3,443	1,078	51	1,221	2,291	23,186
2071	11,271	1,203	2,509	102	17	3,441	1,078	51	1,221	2,259	23,151
2072	11,271	1,203	2,509	102	17	3,441	1,078	51	1,221	2,233	23,125
2073	11,271	1,203	2,509	102	17	3,441	1,078	51	1,221	2,214	23,106
2074	11,271	1,203	2,509	102	17	3,441	1,078	51	1,221	2,202	23,094
2075	11,271	1,203	2,509	102	17	3,441	1,078	51	1,221	2,197	23,089
2076	11,271	1,203	2,509	102	17	3,441	1,078	51	1,221	2,197	23,089
2077	11,271	1,203	2,509	102	17	3,441	1,078	51	1,221	2,197	23,089
2078	11,271	1,203	2,509	102	17	3,441	1,078	51	1,221	2,197	23,089
2079	11,271	1,203	2,509	102	17	3,441	1,078	51	1,221	2,197	23,089
2080	11,271	1,203	2,509	102	17	3,441	1,078	51	1,221	2,197	23,089
2081	11,271	1,203	2,509	102	17	3,441	1,078	51	1,221	2,197	23,089
2082	11,271	1,203	2,509	102	17	3,441	1,078	51	1,221	2,197	23,089
2083	11,271	1,203	2,509	102	17	3,441	1,078	51	1,221	2,197	23,089
2084	11,271	1,203	2,509	102	17	3,441	1,078	51	1,221	2,197	23,089
2085	11,271	1,203	2,509	102	17	3,441	1,078	51	1,221	2,197	23,089
2086	11,271	1,203	2,509	102	17	3,441	1,078	51	1,221	2,197	23,089
2087	11,271	1,203	2,509	102	17	3,441	1,078	51	1,221	2,197	23,089
2088	11,271	1,203	2,509	102	17	3,441	1,078	51	1,221	2,197	23,089
2089	11,271	1,203	2,509	102	17	3,441	1,078	51	1,221	2,197	23,089
2090	11,271	1,203	2,509	102	17	3,441	1,078	51	1,221	2,197	23,089
2091	11,271	1,203	2,509	102	17	3,441	1,078	51	1,221	2,197	23,089
2092	11,271	1,203	2,509	102	17	3,441	1,078	51	1,221	2,197	23,089
2093	11,271	1,203	2,509	102	17	3,441	1,078	51	1,221	2,197	23,089
2094	11,271	1,203	2,509	102	17	3,441	1,078	51	1,221	2,197	23,089
2095	11,271	1,203	2,509	102	17	3,441	1,078	51	1,221	2,197	23,089
2096	11,271	1,203	2,509	102	17	3,441	1,078	51	1,221	2,197	23,089
2097	11,271	1,203	2,509	102	17	3,441	1,078	51	1,221	2,197	23,089
2098	11,271	1,203	2,509	102	17	3,441	1,078	51	1,221	2,197	23,089
2099	11,271	1,203	2,509	102	17	3,441	1,078	51	1,221	2,197	23,089
2100	11,271	1,203	2,509	102	17	3,441	1,078	51	1,221	2,197	23,089



POTENTIAL ENROLLMENT BY GRADE BAND

The tables on the following pages illustrate the current and potential number of students, broken down into the maximum number of students and the mature number of students by school by scenario (400, 500, 600, and 700 units/year). These totals do not include the 51 students that attend the District from outside of the boundaries. Please note that unlike the models shown on the previous pages, the maximum enrollment assumes that all housing units would be at their maximum yield at the same time, which is highly unlikely.

400 Single-Family Units per Year

School Boundary	Existing Housing Stock Students from:						Maximum Housing Stock Students from:						Mature Housing Stock Students from:										
	Single-Family	Multif-Family	Mobile Home Park	Hotel	Developing Single-Family and Multif-Family	Non-Subdivided	Single-Family	Multif-Family	Mobile Home Park	Hotel	Non-Subdivided	Developing Single-Family	Developing Multif-Family	Vacant Developable Land	Single-Family	Multif-Family	Mobile Home Park	Hotel	Non-Subdivided	Developing Single-Family	Developing Multif-Family	Vacant Developable Land	
Alum Creek ES	389	162	0	0	4	6	780	162	0	0	6	9	0	0	298	162	0	0	6	3	0	0	0
Arrowhead ES	351	68	48	0	189	29	701	68	48	0	29	1,192	147	248	268	68	48	0	29	572	147	102	
Cheshire ES	654	37	0	0	95	65	666	37	0	0	65	630	68	1,537	254	37	0	0	65	285	68	630	
Freedom Trail ES	491	116	0	0	0	22	988	116	0	0	22	0	80	0	377	116	0	0	22	2	0	33	
Glen Oak ES	564	127	0	0	0	5	837	127	0	0	5	12	0	111	320	127	0	0	5	4	0	46	
Heritage ES	517	44	0	0	25	33	607	44	0	0	33	136	37	285	232	44	0	0	33	106	37	117	
Indian Springs ES	464	46	0	0	101	37	831	46	0	0	37	155	18	50	317	46	0	0	37	72	18	21	
Johnnyzake Corners ES	591	0	0	0	14	55	881	0	0	0	55	257	78	241	336	0	0	0	55	162	78	99	
Liberty Tree ES	413	42	0	0	73	101	526	42	0	0	101	435	53	754	200	42	0	0	101	237	53	309	
Oak Creek ES	525	120	0	0	0	4	1,051	120	0	0	4	0	0	0	401	120	0	0	4	0	0	0	
Olentang Meadows ES	284	301	0	5	0	6	401	301	0	5	6	0	0	66	153	301	0	5	6	0	0	27	
Scrito Ridge ES	582	112	0	0	0	13	1,218	112	0	0	13	11	0	0	465	112	0	0	13	4	0	0	
Shale Meadows ES	564	5	0	0	22	19	769	5	0	0	19	108	7	386	294	5	0	0	19	45	7	158	
Tyler Run ES	583	7	0	0	0	18	1,155	7	0	0	18	4	1	12	441	7	0	0	18	2	1	5	
Walnut Creek ES	506	51	0	0	0	36	1,000	51	0	0	36	15	57	63	382	51	0	0	36	58	57	26	
Wyandot Run ES	614	5	0	0	0	31	1,209	5	0	0	31	14	31	12	462	5	0	0	31	34	31	5	
ELEMENTARY SUBTOTAL	8,092	1,243	48	5	523	480	976	111	0	0	64	173	67	194	5,202	1,243	48	5	480	1,588	497	1,578	
Berkshire Middle School	692	111	0	0	39	64	850	6	23	0	65	691	42	988	373	111	0	0	64	123	67	80	
Berlin Middle School	626	6	23	0	64	65	850	6	23	0	65	691	42	988	325	6	23	0	65	231	42	405	
Hyatts Middle School	691	36	0	0	65	90	953	36	0	0	90	295	36	402	364	36	0	0	90	155	36	165	
Liberty Middle School	912	54	0	0	7	32	1,577	54	0	0	32	39	16	62	602	54	0	0	32	29	16	25	
Orange Middle School	747	248	0	5	0	20	1,244	248	0	5	20	0	0	73	475	248	0	5	20	1	0	30	
Shanahan Middle School	804	119	0	0	32	23	1,211	119	0	0	23	290	87	204	463	119	0	0	23	195	87	84	
MIDDLE SCHOOL SUBTOTAL	4,472	574	23	5	207	294	2,005	22	31	0	241	1,432	131	2,032	2,601	574	23	5	294	794	249	789	
Berlin High School	1,367	22	31	0	103	241	2,005	22	31	0	241	1,432	131	2,032	765	22	31	0	241	660	131	834	
Liberty High School	1,573	149	0	0	21	77	2,392	149	0	0	77	113	46	47	914	149	0	0	77	83	46	19	
Olentang High School	1,524	159	0	0	47	64	2,358	159	0	0	64	429	117	346	901	159	0	0	64	276	117	142	
Orange High School	1,580	362	0	7	1	47	2,325	362	0	7	47	10	38	139	888	362	0	7	47	40	38	57	
HIGH SCHOOL SUBTOTAL	6,044	692	31	7	172	429	11,271	692	31	7	429	1,052	3,418	3,468	11,271	692	31	7	429	1,059	332	1,052	
TOTAL	18,608	2,509	102	17	902	1,203	18,608	2,509	102	17	902	1,203	1,052	3,418	11,271	2,509	102	17	1,203	3,441	1,078	3,418	

500 Single-Family Units per Year

School Boundary	Existing Housing Stock Students from:						Maximum Housing Stock Students from:						Mature Housing Stock Students from:										
	Single-Family	Multi-Family	Mobile Home Park	Hotel	Developing Single-Family and Multi-Family	Non-Subdivided	Single-Family	Multi-Family	Mobile Home Park	Hotel	Non-Subdivided	Developing Single-Family	Developing Multi-Family	Vacant Developable Land	Single-Family	Multi-Family	Mobile Home Park	Hotel	Non-Subdivided	Developing Single-Family	Developing Multi-Family	Vacant Developable Land	
Alum Creek ES	389	162	0	0	4	6	780	162	0	0	6	9	0	0	298	162	0	0	6	3	0	0	0
Arrowhead ES	351	68	48	0	189	29	701	68	48	0	29	1,192	147	254	268	68	48	0	29	572	147	102	102
Cheshire ES	654	37	0	0	95	65	666	37	0	0	65	630	68	1,571	254	37	0	0	65	285	68	630	630
Freedom Trail ES	491	116	0	0	0	22	988	116	0	0	22	0	0	82	377	116	0	0	22	2	0	33	33
Glen Oak ES	564	127	0	0	0	5	837	127	0	0	5	12	0	114	320	127	0	0	5	4	0	46	46
Heritage ES	517	44	0	0	25	33	607	44	0	0	33	136	37	292	232	44	0	0	33	106	37	117	117
Indian Springs ES	464	46	0	0	101	37	831	46	0	0	37	155	18	51	317	46	0	0	37	72	18	21	21
Johnnyzake Corners ES	591	0	0	0	14	55	881	0	0	0	55	257	78	247	336	0	0	0	55	162	78	99	99
Liberty Tree ES	413	42	0	0	73	101	526	42	0	0	101	435	53	771	200	42	0	0	101	237	53	309	309
Oak Creek ES	525	120	0	0	0	4	1,051	120	0	0	4	0	0	0	401	120	0	0	4	0	0	0	0
Olentangy Meadows ES	284	301	0	0	0	6	401	301	0	5	6	0	0	67	153	301	0	5	6	0	0	27	27
Scrito Ridge ES	582	112	0	0	0	13	1,218	112	0	0	13	11	0	0	465	112	0	0	13	4	0	0	0
Shale Meadows ES	564	5	0	0	22	19	769	5	0	0	19	108	7	394	294	5	0	0	19	45	7	158	158
Tyler Run ES	583	7	0	0	0	18	1,155	7	0	0	18	4	1	12	441	7	0	0	18	2	1	5	5
Walnut Creek ES	506	51	0	0	0	36	1,000	51	0	0	36	15	57	65	382	51	0	0	36	58	57	26	26
Wyandot Run ES	614	5	0	0	0	31	1,209	5	0	0	31	14	31	12	462	5	0	0	31	34	31	5	5
ELEMENTARY SUBTOTAL	8,092	1,243	48	5	523	480	976	111	0	0	64	173	67	199	5,202	1,243	48	5	480	1,588	497	1,578	1,578
Berkshire Middle School	692	111	0	0	39	64	850	6	23	0	65	691	42	1,010	373	111	0	0	64	123	67	80	80
Berlin Middle School	626	6	23	0	64	65	850	6	23	0	65	691	42	1,010	325	6	23	0	65	291	42	405	405
Hyatts Middle School	691	36	0	0	65	90	953	36	0	0	90	295	36	411	364	36	0	0	90	155	36	165	165
Liberty Middle School	912	54	0	0	7	32	1,577	54	0	0	32	39	16	63	602	54	0	0	32	29	16	25	25
Orange Middle School	747	248	0	5	0	20	1,244	248	0	5	20	0	0	75	475	248	0	5	20	1	0	30	30
Shanahan Middle School	804	119	0	0	32	23	1,211	119	0	0	23	290	87	208	463	119	0	0	23	195	87	84	84
MIDDLE SCHOOL SUBTOTAL	4,472	574	23	5	207	294	2,005	22	31	0	241	1,432	131	2,078	2,601	574	23	5	294	794	249	789	789
Berlin High School	1,367	22	31	0	103	241	2,005	22	31	0	241	1,432	131	2,078	765	22	31	0	241	660	131	834	834
Liberty High School	1,573	149	0	0	21	77	2,392	149	0	0	77	113	46	48	914	149	0	0	77	83	46	19	19
Olentangy High School	1,524	159	0	0	47	64	2,358	159	0	0	64	429	117	353	901	159	0	0	64	276	117	142	142
Orange High School	1,580	362	0	7	1	47	2,325	362	0	7	47	10	38	143	888	362	0	7	47	40	38	57	57
HIGH SCHOOL SUBTOTAL	6,044	692	31	7	172	429	11,271	692	31	7	429	1,052	1,052	3,468	692	31	7	429	1,059	332	1,052	1,052	
TOTAL	18,608	2,509	102	17	902	1,203	11,271	2,509	102	17	1,203	3,441	3,441	11,078	11,271	2,509	102	17	1,203	3,441	1,078	3,418	3,418

600 Single-Family Units per Year

School Boundary	Existing Housing Stock Students from:						Maximum Housing Stock Students from:						Mature Housing Stock Students from:										
	Single-Family	Multif-Family	Mobile Home Park	Hotel	Developing Single-Family and Multif-Family	Non-Subdivided	Single-Family	Multif-Family	Mobile Home Park	Hotel	Non-Subdivided	Developing Single-Family	Developing Multif-Family	Vacant	Single-Family	Multif-Family	Mobile Home Park	Hotel	Non-Subdivided	Developing Single-Family	Developing Multif-Family	Vacant	
Alum Creek ES	389	162	0	0	4	6	780	162	0	0	6	9	0	0	298	162	0	0	6	3	0	0	0
Arrowhead ES	351	68	48	0	189	29	701	68	48	0	29	1,192	147	257	268	68	48	0	29	572	147	102	102
Cheshire ES	654	37	0	0	95	65	666	37	0	0	65	630	68	1,592	254	37	0	0	65	285	68	630	630
Freedom Trail ES	491	116	0	0	0	22	988	116	0	0	22	0	0	83	377	116	0	0	22	2	0	33	33
Glen Oak ES	564	127	0	0	0	5	837	127	0	0	5	12	0	115	320	127	0	0	5	4	0	46	46
Heritage ES	517	44	0	0	25	33	607	44	0	0	33	136	37	295	232	44	0	0	33	106	37	117	117
Indian Springs ES	464	46	0	0	101	37	831	46	0	0	37	155	18	52	317	46	0	0	37	72	18	21	21
Johnnyzake Corners ES	591	0	0	0	14	55	881	0	0	0	55	257	78	250	336	0	0	0	55	162	78	99	99
Liberty Tree ES	413	42	0	0	73	101	526	42	0	0	101	435	53	781	200	42	0	0	101	237	53	309	309
Oak Creek ES	525	120	0	0	0	4	1,051	120	0	0	4	0	0	0	401	120	0	0	4	0	0	0	0
Olentangy Meadows ES	284	301	0	0	0	6	401	301	0	5	6	0	0	68	153	301	0	5	6	0	0	27	27
Scrito Ridge ES	582	112	0	0	0	13	1,218	112	0	0	13	11	0	0	465	112	0	0	13	4	0	0	0
Shale Meadows ES	564	5	0	0	22	19	769	5	0	0	19	108	7	399	294	5	0	0	19	45	7	158	158
Tyler Run ES	583	7	0	0	0	18	1,155	7	0	0	18	4	1	12	441	7	0	0	18	2	1	5	5
Walnut Creek ES	506	51	0	0	0	36	1,000	51	0	0	36	15	57	65	382	51	0	0	36	58	57	26	26
Wyandot Run ES	614	5	0	0	0	31	1,209	5	0	0	31	14	31	12	462	5	0	0	31	34	31	5	5
ELEMENTARY SUBTOTAL	8,092	1,243	48	5	523	480	976	111	0	0	64	173	67	201	5,202	1,243	48	5	480	1,588	497	1,578	1,578
Berkshire Middle School	692	111	0	0	39	64	850	6	23	0	65	691	42	1,023	373	111	0	0	64	123	67	80	80
Berlin Middle School	626	6	23	0	64	65	850	6	23	0	65	691	42	1,023	325	6	23	0	65	291	42	405	405
Hyatts Middle School	691	36	0	0	65	90	953	36	0	0	90	295	36	417	364	36	0	0	90	155	36	165	165
Liberty Middle School	912	54	0	0	7	32	1,577	54	0	0	32	39	16	64	602	54	0	0	32	29	16	25	25
Orange Middle School	747	248	0	5	0	20	1,244	248	0	5	20	0	0	76	475	248	0	5	20	1	0	30	30
Shannah Middle School	804	119	0	0	32	23	1,211	119	0	0	23	290	87	211	463	119	0	0	23	195	87	84	84
MIDDLE SCHOOL SUBTOTAL	4,472	574	23	5	207	294	2,005	22	31	0	241	1,432	131	2,105	2,601	574	23	5	294	794	249	789	789
Berlin High School	1,367	22	31	0	103	241	2,005	22	31	0	241	1,432	131	2,105	765	22	31	0	241	660	131	834	834
Liberty High School	1,573	149	0	0	21	77	2,392	149	0	0	77	113	46	48	914	149	0	0	77	83	46	19	19
Olentangy High School	1,524	159	0	0	47	64	2,358	159	0	0	64	429	117	358	901	159	0	0	64	276	117	142	142
Orange High School	1,580	362	0	7	1	47	2,325	362	0	7	47	10	38	144	888	362	0	7	47	40	38	57	57
HIGH SCHOOL SUBTOTAL	6,044	692	31	7	172	429	11,271	692	31	7	429	1,052	1,052	3,468	11,271	692	31	7	429	1,059	332	1,052	1,052
TOTAL	18,608	2,509	102	17	902	1,203	18,608	2,509	102	17	902	1,203	1,203	3,418	11,271	2,509	102	17	1,203	3,441	1,078	3,418	3,418

700 Single-Family Units per Year

School Boundary	Existing Housing Stock Students from:						Maximum Housing Stock Students from:						Mature Housing Stock Students from:										
	Single-Family	Multi-Family	Mobile Home Park	Hotel	Developing Single-Family and Multi-Family	Non-Subdivided	Single-Family	Multi-Family	Mobile Home Park	Hotel	Non-Subdivided	Developing Single-Family	Developing Multi-Family	Vacant Developable Land	Single-Family	Multi-Family	Mobile Home Park	Hotel	Non-Subdivided	Developing Single-Family	Developing Multi-Family	Vacant Developable Land	
Alum Creek ES	389	162	0	0	4	6	780	162	0	0	6	9	0	0	298	162	0	0	6	3	0	0	0
Arrowhead ES	351	68	48	0	189	29	701	68	48	0	29	1,192	147	259	268	68	48	0	29	572	147	102	102
Cheshire ES	654	37	0	0	95	65	666	37	0	0	65	630	68	1,603	254	37	0	0	65	285	68	630	630
Freedom Trail ES	491	116	0	0	0	22	988	116	0	0	22	0	84	0	377	116	0	0	22	2	0	33	33
Glen Oak ES	564	127	0	0	0	5	837	127	0	0	5	12	0	116	320	127	0	0	5	4	0	46	46
Heritage ES	517	44	0	0	25	33	607	44	0	0	33	136	37	297	232	44	0	0	33	106	37	117	117
Indian Springs ES	464	46	0	0	101	37	831	46	0	0	37	155	18	52	317	46	0	0	37	72	18	21	21
Johnnyzake Corners ES	591	0	0	0	14	55	881	0	0	0	55	257	78	252	336	0	0	0	55	162	78	99	99
Liberty Tree ES	413	42	0	0	73	101	526	42	0	0	101	435	53	787	200	42	0	0	101	237	53	309	309
Oak Creek ES	525	120	0	0	0	4	1,051	120	0	0	4	0	0	0	401	120	0	0	4	0	0	0	0
Olentangy Meadows ES	284	301	0	5	0	6	401	301	0	5	6	0	0	68	153	301	0	5	6	0	0	27	27
Scrito Ridge ES	582	112	0	0	0	13	1,218	112	0	0	13	11	0	0	465	112	0	0	13	4	0	0	0
Shale Meadows ES	564	5	0	0	22	19	769	5	0	0	19	108	7	402	294	5	0	0	19	45	7	158	158
Tyler Run ES	583	7	0	0	0	18	1,155	7	0	0	18	4	1	13	441	7	0	0	18	2	1	5	5
Walnut Creek ES	506	51	0	0	0	36	1,000	51	0	0	36	15	57	66	382	51	0	0	36	58	57	26	26
Wyandot Run ES	614	5	0	0	0	31	1,209	5	0	0	31	14	31	12	462	5	0	0	31	34	31	5	5
ELEMENTARY SUBTOTAL	8,092	1,243	48	5	523	480	976	111	0	0	64	173	67	203	5,202	1,243	48	5	480	1,588	497	1,578	1,578
Berkshire Middle School	692	111	0	0	39	64	850	6	23	0	65	691	42	1,030	373	111	0	0	64	123	67	80	80
Berlin Middle School	626	6	23	0	64	65	850	6	23	0	65	691	42	1,030	325	6	23	0	65	291	42	405	405
Hyatts Middle School	691	36	0	0	65	90	953	36	0	0	90	295	36	419	364	36	0	0	90	155	36	165	165
Liberty Middle School	912	54	0	0	7	32	1,577	54	0	0	32	39	16	64	602	54	0	0	32	29	16	25	25
Orange Middle School	747	248	0	5	0	20	1,244	248	0	5	20	0	0	76	475	248	0	5	20	1	0	30	30
Shanahan Middle School	804	119	0	0	32	23	1,211	119	0	0	23	290	87	212	463	119	0	0	23	195	87	84	84
MIDDLE SCHOOL SUBTOTAL	4,472	574	23	5	207	294	2,005	22	31	0	241	1,432	131	2,119	2,601	574	23	5	294	794	249	789	789
Berlin High School	1,367	22	31	0	103	241	2,005	22	31	0	241	1,432	131	2,119	765	22	31	0	241	660	131	834	834
Liberty High School	1,573	149	0	0	21	77	2,392	149	0	0	77	113	46	49	914	149	0	0	77	83	46	19	19
Olentangy High School	1,524	159	0	0	47	64	2,358	159	0	0	64	429	117	360	901	159	0	0	64	276	117	142	142
Orange High School	1,580	362	0	7	1	47	2,325	362	0	7	47	10	38	145	888	362	0	7	47	40	38	57	57
HIGH SCHOOL SUBTOTAL	6,044	692	31	7	172	429	11,271	692	31	7	429	1,052	1,052	3,468	692	31	7	429	1,059	332	1,052	1,052	
TOTAL	18,608	2,509	102	17	902	1,203	11,271	2,509	102	17	1,203	3,441	3,441	11,271	2,509	102	17	1,203	3,441	1,078	1,078	3,418	3,418

CONCLUSION

As with any projection, the District should review any updated information including land annexation plans, zoning, planned and active housing development, student enrollment trends, and student location data.

Cooperative Strategies is pleased to have had the opportunity to provide the District with this student potential analysis. We hope this document will provide the necessary information to make informed decisions about the future of the Olentangy Local School District.