



IOWA CITY
COMMUNITY
SCHOOL DISTRICT

Child-Centered : Future-Focused

**ENROLLMENT,
DEMOGRAPHICS,
AND
CLASS SIZE REPORT**

Winter 2018-19

Prepared by

Matt Degner, Assistant Superintendent

Amy Kortemeyer, Assistant Superintendent

CONTENTS

- Overview
- Enrollment
 - Enrollment Details
 - Open Enrollment
 - Live-Enroll
 - Enrollment Projections
- Demographics
 - Race/Ethnicity
 - Socioeconomic Status
 - English Language Learners
 - Home Language
 - Special Education
- Class Size
 - Board Policy
 - Elementary Class Sizes
 - Secondary Class Sizes

EQUITY STATEMENT

It is the policy of the Iowa City Community School District not to discriminate on the basis of race, color, national origin, sex, disability, religion, creed, age, marital status, sexual orientation, gender identity and socioeconomic status in its educational programs, activities, or employment practices. There is a grievance procedure for processing complaints of discrimination.

If you have questions or a grievance related to this policy, please contact Chace Ramey, Chief Human Resources Director, 1725 N. Dodge St., Iowa City, IA 52245, 319-688-1000, Ramey.Chace@iowacityschools.org.

2018-19 BOARD OF EDUCATION

Name	Title
Mr. J.P. Claussen	Director
Mr. Shawn Eyestone	Director
Ms. Janet Godwin	President
Mr. Phil Hemingway	Director
Ms. Ruthina Malone	Director
Mr. Paul Roesler	Vice President
Ms. Lori Roetlin	Director

2018-19 DISTRICT ADMINISTRATORS

Name	Title
Ms. Kate Callahan	Director of Student Services
Ms. Laura Cottrell	Director of Diversity & Cultural Responsiveness
Ms. Lora Daily	Director of Learning Supports
Mr. Matt Degner	Assistant Superintendent
Ms. Alison Demory	Director of Nutrition Services
Mr. Leslie Finger	Director of Budget & Finance
Ms. Jane Fry	Director of Talent and Leadership
Ms. Lisa Glenn	Director of Special Education
Dr. Craig Hansel	Chief Financial Officer
Ms. Amy Kortemeyer	Assistant Superintendent
Mr. Adam Kurth	Director of Technology & Innovation
Mr. Stephen Murley	Superintendent
Dr. Diane Schumacher	Director of Curriculum, Instruction & Assessment
Mr. Duane Van Hemert	Director of Physical Plant



OVERVIEW

The Enrollment, Demographics, and Class Size Report is a combined report intended to serve as a single source for information related to counts and characteristics of students. The report includes current enrollment and future enrollment projections, demographic information (related to race/ethnicity, socioeconomic status, English language learners, home language, and special education), and class size information for both the elementary and secondary levels.

Every attempt has been made to provide accurate information in this report. If you believe there is an error, or if you desire further clarification, please contact Matt Degner, Assistant Superintendent or Amy Kortemeyer, Assistant Superintendent.

ENROLLMENT

CERTIFIED ENROLLMENT VERSUS HEAD COUNTS VERSUS STUDENTS PROVIDED INSTRUCTION

District students are counted for many different purposes, including staffing, class sizes, capacity, and funding, to name a few. Depending on the purpose of the count, a headcount may be used, or some sort of method to “weight” some students differently than others. For instance, for purposes of funding, traditional, full-time students who don’t require special services may provide the district with one level of funding, while those who require more or less services may be weighted such that the district receives more or less funding. Some of the categories for weighting include pre-school, dual-enrolled, home school assistance, and special education.

The Department of Education determines a formula that all districts in the State of Iowa use to determine their enrollment for purposes of funding. This formula is based on the students present in each school district on October 1st and results in what is called the “certified enrollment.” **The certified enrollment for the 2018-19 school year is 14,285.06.** This number is a weighted value based on the way each student in the district is categorized.

The district often uses headcounts when referring to enrollment. **The K-12 enrollment headcount for the 2018-19 school year is 14,118.**

Some agencies, such as Grant Wood Area Education Agency, refer to an alternative form of weighted enrollment, often called **“students provided instruction.” For the 2018-19 school year, this weighted enrollment is 14064.46.**

The method used to calculate the three values, on the previous page, can be seen in Appendix 1 of this report. The table there represents the actual categories and counts that were submitted to the Iowa Department of Education for the 2018-19 school year. The blue-shaded cells combine to give the “headcount” of K-12 students (14,118); the purple-shaded cells add up to the “certified enrollment” (14,285.06) upon which District funding for the 2018-19 school year is based; and the orange-shaded cells add up to the value some call “students provided instruction” (14,064.46).

STUDENTS COUNTED IN ONE SCHOOL BUT ATTENDING ANOTHER

Some students are counted in one school although they actually attend in another location. For instance, students served at Transitions or the Theodore Roosevelt Education Center (TREC) are reflected in the counts of the school to which they are assigned (such as City, Liberty or West). For purposes of reporting enrollment to the Iowa Department of Education, these are programs, not schools. While Tate High School also draws students from throughout the District without regard to where the students live, much like Transitions and TREC, this is considered a school by the Department of Education, and therefore Tate enrollments are provided in this report.

ENROLLMENT DETAILS

Tables 1 through 4 and figure 1 present information on current and past enrollment. **For the 2018-19 school year, the district has increased 144 students in grades K through 12, representing a 1% increase.** Certified enrollment increased 87.48 or .6%, from 14,197.58 to 14285.06.

Table 1. K-12 enrollment (headcount) change from 2017-18 to 2018-19.

School	2017-18	2018-19	Growth/ Reduction	% Growth/ Reduction
Alexander ES	429	430	1	0.2%
Borlaug ES	457	503	46	10.1%
Coralville Central ES	435	427	-8	-1.8%
Garner ES	663	688	25	3.8%
Hills ES	205	192	-13	-6.3%
Hoover ES	263	263	0	0.0%
Horn ES	419	395	-24	-5.7%
Kirkwood ES	328	354	26	7.9%
Lemme ES	380	398	18	4.7%
Lincoln ES	230	215	-15	-6.5%
Longfellow ES	313	341	28	8.9%
Lucas ES	458	457	-1	-0.2%
Mann ES	227	216	-11	-4.8%
Penn ES	650	621	-29	-4.5%
Shimek ES	218	215	-3	-1.4%
Twain ES	340	342	2	0.6%
Van Allen ES	508	505	-3	-0.6%
Weber ES	472	464	-8	-1.7%
Wickham ES	486	482	-4	-0.8%
Wood ES	310	302	-8	-2.6%
ES Total	7,791	7,810	19	0.2%
North Central JH	557	570	13	2.3%
Northwest JH	736	710	-26	-3.5%
South East JH	767	789	22	2.9%
JH Total	2,060	2,069	9	0.4%
City HS	1,622	1,605	-17	-1.0%
Liberty HS	743	948	205	27.6%
Tate HS	165	160	-5	-3.0%
West HS	1,593	1,526	-67	-4.2%
HS Total	4,123	4,239	116	2.8%
GRAND TOTAL	13,974	14,118	144	1.0%

Table 2. 2018-19 enrollment headcount by school by grade.

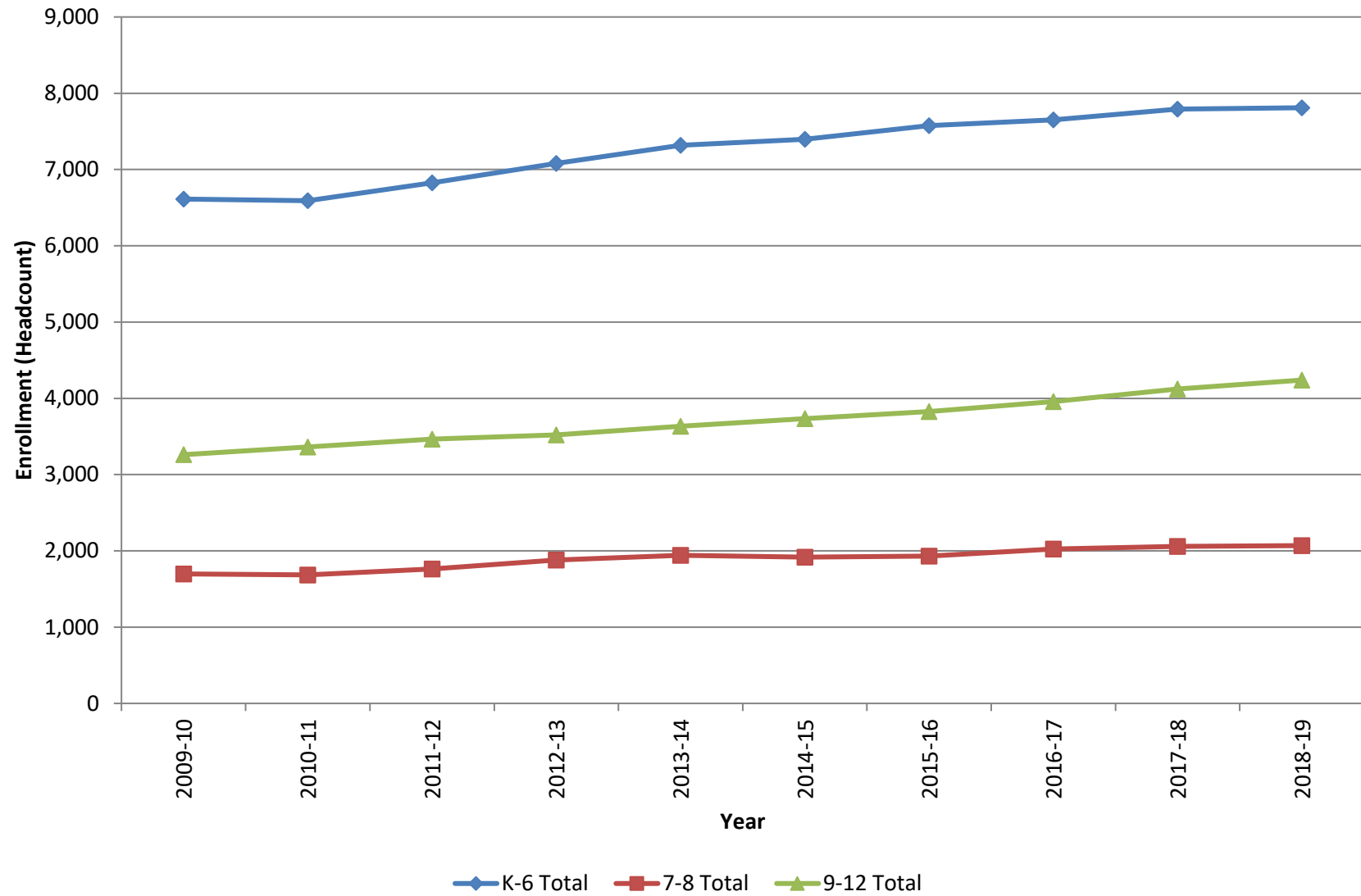
	GRADE															
School	PK	K	1	2	3	4	5	6	7	8	9	10	11	12	Total PK-12	Total K-12
Alexander ES	34	76	66	60	62	53	58	55							464	430
Borlaug ES	37	74	81	68	68	66	82	64							540	503
Coralville Central ES	34	62	63	61	63	62	52	64							461	427
Garner ES		95	121	85	120	87	96	84							688	688
Hills ES	18	28	27	21	32	24	29	31							210	192
Hoover ES	40	39	43	39	42	32	30	38							303	263
Horn ES		73	56	47	57	57	53	52							395	395
Kirkwood ES	28	51	44	49	58	53	53	46							382	354
Lemme ES		64	55	58	53	39	60	69							398	398
Lincoln EES		34	24	36	34	37	28	22							215	215
Longfellow ES	31	39	49	47	54	54	48	50							372	341
Lucas ES		65	74	60	58	51	75	74							457	457
Mann ES	13	33	26	28	42	22	32	33							229	216
Penn ES	36	86	97	104	89	79	88	78							657	621
Shimek ES	18	41	25	27	29	29	42	22							233	215
Twain ES	35	53	50	47	61	53	42	36							377	342
Van Allen ES	68	72	57	77	73	75	70	81							573	505
Weber ES	30	65	86	64	61	48	69	71							494	464
Wickham ES		67	59	69	71	74	72	70							482	482
Wood ES	35	44	45	42	40	51	46	34							337	302
Offsite Preschools	113														113	0
ES Total	570	1,161	1,148	1,089	1,167	1,046	1,125	1,074	0	0	0	0	0	0	8,380	7,810
North Central JH									288	282					570	570
Northwest JH									380	330					710	710
South East JH									405	384					789	789
JH Total									1,073	996					2,069	2,069
City HS											396	413	370	426	1,605	1,605
Liberty HS											288	290	271	99	948	948
Tate HS											9	15	50	86	160	160
West HS											391	351	356	428	1,526	1,526
HS Total											1,084	1,069	1,047	1,039	4,239	4,239
GRAND TOTAL	570	1,161	1,148	1,089	1,167	1,046	1,125	1,074	1,073	996	1,084	1,069	1,047	1,039	14,688	14,118

Table 3. K-12 enrollment headcount 10-year trend by building.

School	YEAR									
	2009-10	2010-11	2011-12	2012-13	2013-14	2014-15	2015-16	2016-17	2017-18	2018-19
Alexander ES							348	406	429	430
Borlaug ES				326	373	403	431	431	457	503
Coralville Central ES	430	427	430	429	430	404	422	438	435	427
Garner ES		382	425	491	535	581	609	617	663	688
Hills ES	126	98	110	108	101	111	184	199	205	192
Hoover ES	362	373	372	361	328	311	272	261	263	263
Horn ES	331	362	363	461	466	493	500	483	419	395
Kirkwood ES	345	313	320	331	386	363	314	338	328	354
Lemme ES	332	333	338	372	403	407	395	377	380	398
Lincoln ES	263	244	237	246	239	237	239	237	230	215
Longfellow ES	311	317	345	334	322	329	338	335	313	341
Lucas ES	416	411	440	436	428	405	442	441	458	457
Mann ES	259	250	243	247	243	223	222	242	227	216
Penn ES	511	451	488	516	537	530	552	576	650	621
Roosevelt ES	309	295	279							
Shimek ES	200	201	207	199	212	210	212	215	218	215
Twain ES	229	197	225	268	316	378	262	311	340	342
Van Allen ES	661	425	446	467	496	507	524	500	508	505
Weber ES	544	553	564	477	494	490	422	425	472	464
Wickham ES	492	487	476	481	483	503	529	513	486	482
Wood ES	492	472	517	530	525	511	360	305	310	302
ES Total	6,613	6,591	6,825	7,080	7,317	7,396	7,577	7,650	7,791	7,810
North Central JH	396	396	409	469	477	478	504	551	557	570
Northwest JH	615	628	634	650	684	641	628	652	736	710
South East JH	688	661	721	761	781	800	801	823	767	789
JH Total	1,699	1,685	1,764	1,880	1,942	1,919	1,933	2,026	2,060	2,069
City HS	1,371	1,393	1,393	1,414	1,545	1,599	1,668	1,712	1,622	1,605
Liberty HS									743	948
Tate HS	120	118	162	149	139	151	158	154	165	160
West HS	1,770	1,853	1,910	1,956	1,951	1,985	2,001	2,091	1,593	1,526
HS Total	3,261	3,364	3,465	3,519	3,635	3,735	3,827	3,957	4,123	4,239
GRAND TOTAL	11,573	11,640	12,054	12,479	12,894	13,050	13,337	13,633	13,974	14,118

Table 4. K-12 enrollment headcount 10-year trend by grade.

Grade	YEAR									
	2009-10	2010-11	2011-12	2012-13	2013-14	2014-15	2015-16	2016-17	2017-18	2018-19
K	1,020	972	1,031	1,084	1,175	1,085	1,178	1134	1,153	1,161
1	970	1,000	983	1,037	1,122	1,160	1,071	1176	1,122	1,148
2	926	946	1,023	989	1,069	1,095	1,143	1072	1,174	1,089
3	982	906	960	1,035	1,004	1,067	1,078	1127	1,061	1,167
4	943	943	929	957	1,043	993	1,076	1094	1,134	1,046
5	894	920	968	965	958	1,032	981	1061	1,076	1,125
6	878	904	931	1,013	946	964	1,050	986	1,071	1,074
K-6 Total	6,613	6,591	6,825	7,080	7,317	7,396	7,577	7650	7791	7,810
7	851	867	897	952	994	941	975	1056	998	1073
8	848	818	867	928	948	978	958	970	1,062	996
7-8 Total	1,699	1,685	1,764	1,880	1,942	1,919	1,933	2026	2,060	2,069
9	835	848	856	884	914	955	985	1006	1,032	1,084
10	833	852	882	873	898	949	957	992	1,038	1,069
11	791	834	851	861	888	910	932	955	1,016	1,047
12	802	830	876	901	935	921	953	1004	1,037	1,039
9-12 Total	3,261	3,364	3,465	3,519	3,635	3,735	3,827	3957	4,123	4,239
GRAND TOTAL	11,573	11,640	12,054	12,479	12,894	13,050	13,337	13,633	13,974	14,118

Figure 1. K-12 enrollment headcount 10-year trend by grade range.

OPEN ENROLLMENT

Iowa law allows a student to “open enroll” between districts. Students who open enroll are allowed to attend a district other than the district in which they reside, and the funding for that student goes with him/her to the new district. Tables 5 through 9 and figure 2 and 3 present information on open enrollment for the district. **In 2018-19, 451 students open enrolled out of the district and 163 students open enrolled into the district, for a net loss of 288 students.** The net loss of students in 2016-17 was 415, the net loss this year was 288, a 30.6% decrease. This was in part due to the opening of Liberty High School.

Students open enroll into and out of many different districts, usually in close proximity with the district in which they reside. There are 24 students who appear to open enroll out to districts far from Iowa City, however those students are actually enrolled in online programs offered by CAM and Clayton Ridge school districts. Mid-Prairie school district has a homeschool assistance program into which many families enroll.

Table 5. Open enrollment comparison, 2017-18 to 2018-19.

	2017-18	2018-19	% Growth/Reduction
Open Enrollment In	139.0	163.0	17.3%
Open Enrollment Out	-473.0	-451.0	-4.7%
Net Open Enrollment	-334.0	-288.0	-13.8%

Table 6. Open enrollment into ICCSD by district by grade.

District	GRADE														Total
	PK	K	1	2	3	4	5	6	7	8	9	10	11	12	
Cedar Rapids					1		1					1	2		5
Clear Creek Amana		5	9	3	4	4	5	4	3	9	9	12	10	5	82
College		1						1	1			1			4
Fairfield									1		1				2
Highland		1	1			1					1				4
Iowa Valley												1			1
Lone Tree		1	1	1		1			1			2	2	3	12
Mid-Prairie			1	1		1	1				1	2		1	8
Monticello			1												1
Solon		2	1	1				1		1		1			7
Tipton				1											1
Waco Comm			1												1
Washington						1									1
West Branch		1	3	2		1	3	1	1	4	2	3	2	2	25
West Liberty					1			1		1	1			2	6
Williamsburg						1		1					1		3
Total	11	18	9	6	10	10	9	7	15	15	23	17	13	163	

Table 7. Open enrollment out of ICCSD by district by grade.

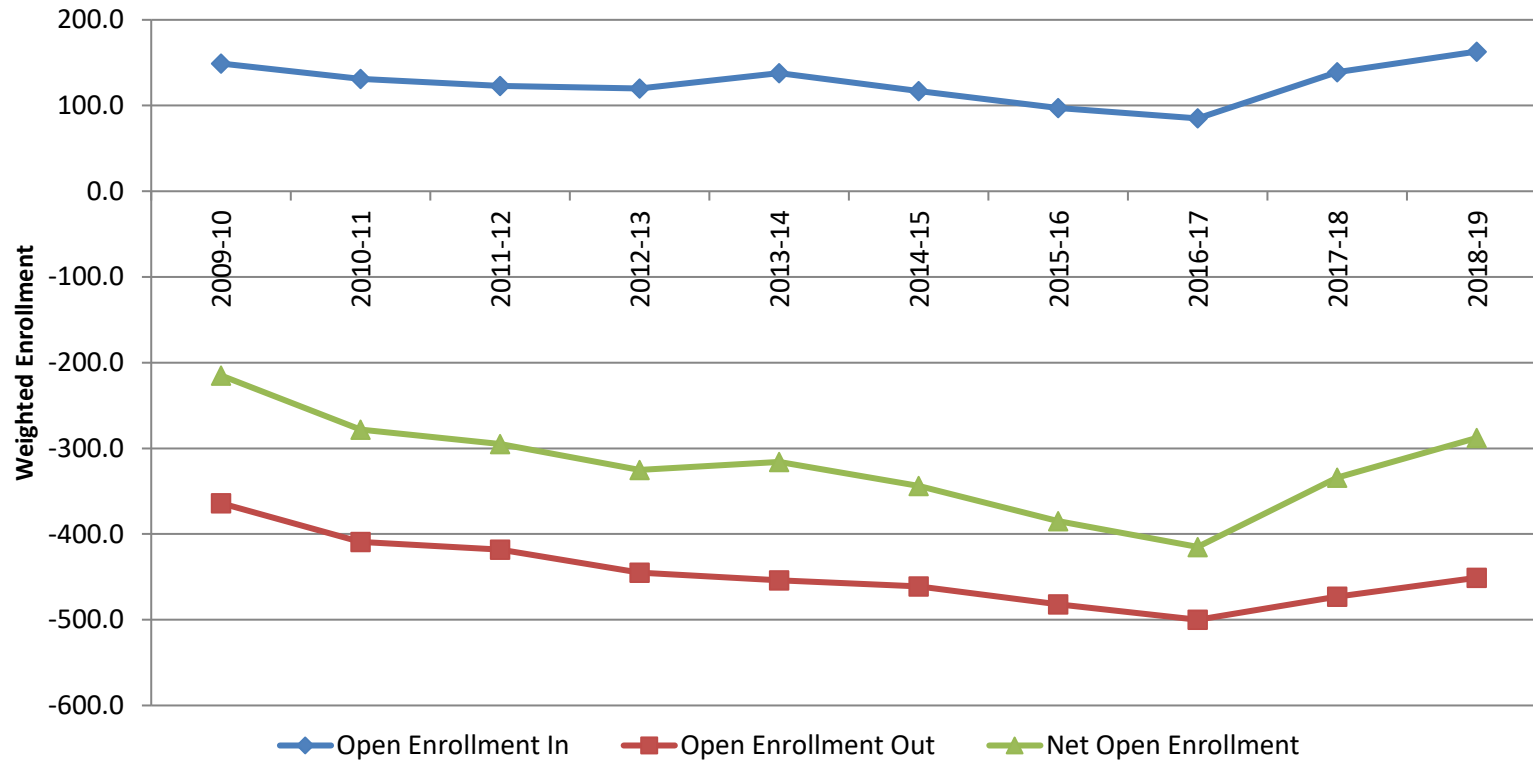
District	GRADE														Total
	PK	K	1	2	3	4	5	6	7	8	9	10	11	12	PK-12
CAM							2	1	3		3	1	5	6	21
Cedar Rapids				1		1					1	1		2	6
Clear Creek Amana	1	8	11	6	11	4	12	9	11	14	13	20	14	11	145
Clayton Ridge									1				1	1	3
College Community							1			1		1		1	4
Highland			3	2	3		2	2	3	2	3	5	4	2	31
Lone Tree		1	1	1	1						1		1		6
Marion				2			2					1			5
Mid-Prairie		14	11	13	12	15	11	13	7	12	5	7	3	7	130
Mount Vernon												1			1
Solon			2	2	1	7	3	2	10	8	7	12	4	8	66
Vinton Shellsburg		1													1
Waco													1		1
Washington											1		1		2
West Branch		1	1	1	1	4	1	1	1		4		3	2	20
West Liberty		2	1	1	2	1		1						1	9
GRAND TOTAL	1	27	30	29	31	32	34	29	36	37	38	49	37	41	451

Table 8. Net open enrollment (open enrollment in minus open enrollment out) by district by grade.

District	GRADE														Total
	PK	K	1	2	3	4	5	6	7	8	9	10	11	12	PK-12
CAM	0	0	0	0	1	0	-1	-1	-3	0	-3	0	-3	-6	-16
Cedar Rapids	0	0	0	-1	0	-1	0	0	0	0	-1	-1	0	-2	-6
Clayton Ridge	0	0	0	0	0	0	0	0	-1	0	0	0	-1	-1	-3
Clear Creek Amana	-1	-3	-2	-3	-7	0	-7	-5	-8	-5	-4	-8	-4	-6	-63
College	0	1	0	0	0	0	-1	1	1	-1	0	0	0	-1	0
Fairfield	0	0	0	0	0	0	0	0	1	0	1	0	0	0	2
Highland	0	1	-2	-2	-3	1	-2	-2	-3	-2	-2	-5	-4	-2	-27
Iowa Valley	0	0	0	0	0	0	0	0	0	0	0	1	0	0	1
Lone Tree	0	0	0	0	-1	1	0	0	1	0	-1	2	1	3	6
Marion	0	0	0	-2	0	0	-2	0	0	0	0	-1	0	0	-5
Mid-Prairie	0	-14	-10	-12	-12	-14	-10	-13	-7	-12	-4	-5	-3	-6	-122
Monticello	0	0	1	0	0	0	0	0	0	0	0	0	0	0	1
Mount Vernon	0	0	0	0	0	0	0	0	0	0	0	-1	0	0	-1
Solon	0	2	-1	-1	-1	-7	-3	-1	-10	-7	-7	-11	-4	-8	-59
Tipton	0	0	0	1	0	0	0	0	0	0	0	0	0	0	1
Vinton-Shellsburg	0	-1	0	0	0	0	0	0	0	0	0	0	0	0	-1
Waco	0	0	1	0	0	0	0	0	0	0	0	0	-1	0	0
Washington	0	0	0	0	0	1	0	0	0	0	-1	0	-1	0	-1
West Branch	0	0	2	1	-1	-3	2	0	0	4	-2	3	-1	0	5
West Liberty	0	-2	-1	-1	-1	-1	0	0	0	1	1	0	0	1	-3
Williamsburg	0	0	0	0	0	1	0	1	0	0	0	0	1	0	3
GRAND TOTAL	-1	-16	-12	-20	-25	-22	-24	-20	-29	-22	-23	-26	-20	-28	-288

Table 9. Open enrollment 10-year trend.

	YEAR									
	2009-10	2010-11	2011-12	2012-13	2013-14	2014-15	2015-16	2016-17	2017-18	2018-19
Open Enrollment In	149.0	131.0	123.0	120.0	138.0	117.0	97.0	85.0	139	163
Open Enrollment Out	-364.0	-409.0	-418.0	-445.0	-454.0	-461.0	-482.0	-500.0	-473	-451
Net Open Enrollment	-215.0	-278.0	-295.0	-325.0	-316.0	-344.0	-385.0	-415.0	-334.0	-288.0

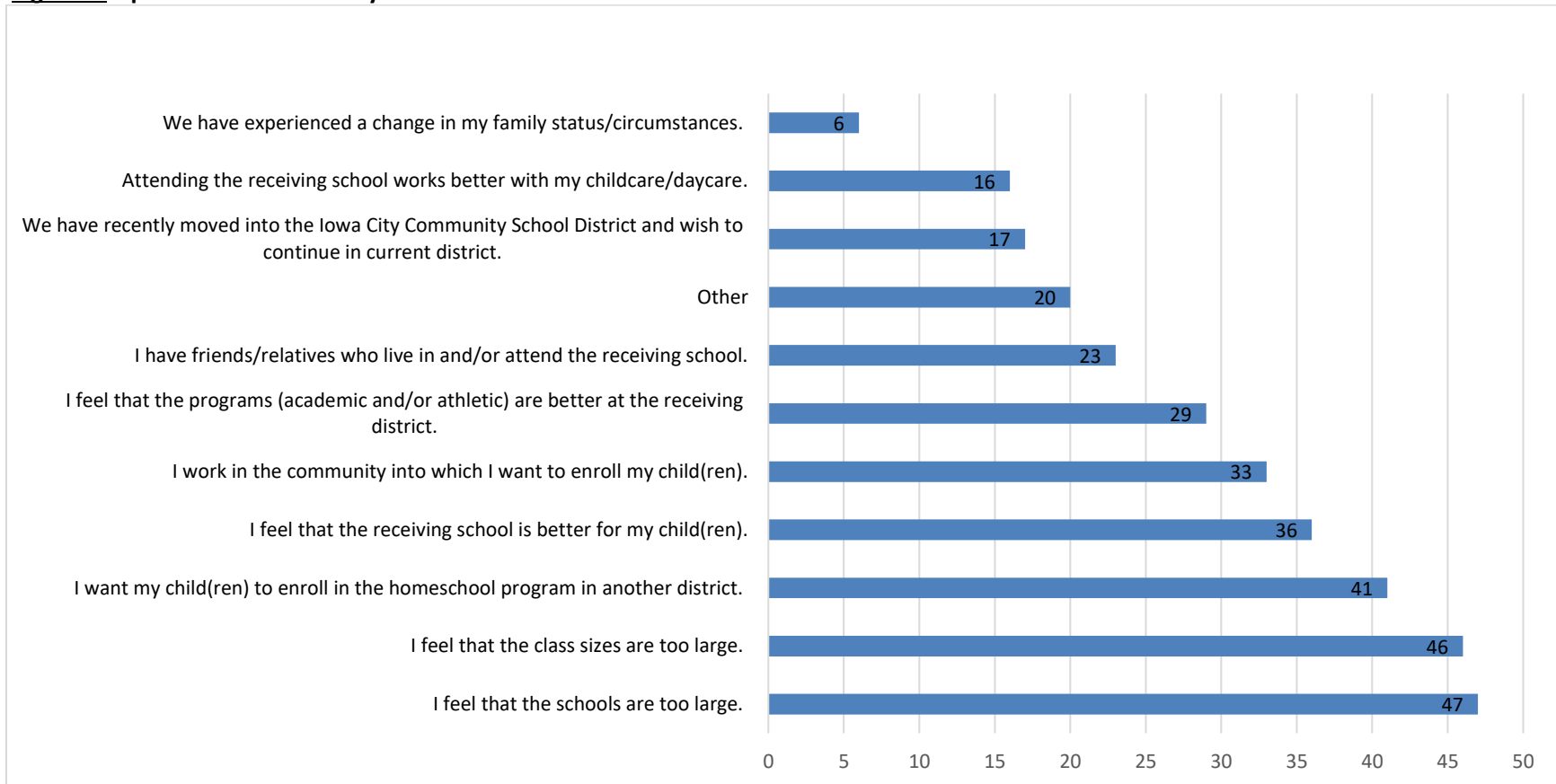
Figure 2. Open enrollment 10-year trend.

Each year, the District sends a survey to families of students who are currently open enrolled out of the district. This year the District emailed 440 surveys, one for each student currently open enrolled out of the district, and received 165 responses. The surveys were only sent to families with an email address on file. The results of the survey are presented in figure 3.

The top two reasons for open enrolling out were:

- 1)** I feel that the schools are too large.
- 2)** I feel that the class sizes are too large.

Figure 3. Open enrollment Survey Results



LIVE-ENROLL

Students sometimes attend schools other than the school to which their home address is assigned. This may occur because the student is assigned to a special education or ELL program, is on a voluntary or SINA transfer, or open enrolls into the district. Tables 10 and 11, and figures 4 and 5, show counts of K-12 students disaggregated by where they live versus where they enroll.

Definitions:

- ENROLL: Number of students enrolled in the school
- LIVE: Number of students in the applicable grade levels living within the attendance boundary of the school
- LIVE & ENROLL: Number of students living within the attendance boundary of the school who are also enrolled in the school
- TRANSFER IN: Number of students enrolled in the school that live outside the attendance boundary of the school
- TRANSFER OUT: Number of students that live within the attendance boundary of the school that are enrolled in a different school

Table 10. 2018-19 Grades K-6 student live-enroll table.

	ENROLL																							Live & Transfer	Transfer
	01.	02.	03.	04.	05.	06.	07.	08.	09.	10.	11.	12.	13.	14.	15.	16.	17.	18.	19.	20.	26.	Live	Enroll	Out	(% of Live)
01. Alexander	388	1	2		4	2	2	2	5	4	6	6	3		2	9		2		19		457	388	69	15.1%
02. Borlaug		457				3	4							1				3				468	457	11	2.4%
03. Coralville Central		6	369					15	2	1	2			2		1	4	2	18			423	369	54	12.8%
04. Garner				663			1			2				8			6	1	3			684	663	21	3.1%
05. Hills	3	3	2		172	1	1									6						188	172	16	8.5%
06. Hoover						212			4		4		3		2	2				2		229	212	17	7.4%
07. Horn		1	2		2	1	360				2		1		1	2		3		4		379	360	19	5.0%
08. Kirkwood	2	24	34	3			2	323	1	3	5	1		1	1	1	1		14	2		418	323	95	22.7%
09. Lemme	2					6			364			8	1		3	3						387	364	23	5.9%
10. Lincoln	1									178				5		3	3		2	4		190	178	12	6.3%
11. Longfellow	2		1			7			3	4	289	9	3		2	2				3		325	289	36	11.1%
12. Lucas	6					11	2		9		5	407	4			4				10		458	407	51	11.1%
13. Mann	1						1			11	2	7	200			11	2					235	200	35	14.9%
14. Penn			2	11						2				589				15		2		621	589	32	5.2%
15. Shimek		2	2		2				1	4	2	2			178					1		194	178	16	8.2%
16. Twain	3	3	1		7	6			3	1	9	7			2	297		1		2		342	297	45	13.2%
17. Van Allen				4				2	1					6			467			4		484	467	17	3.5%
18. Weber	1	6	2				20		2		1				2	2		448	2			486	448	38	7.8%
19. Wickham			9					3		2				1	1		1	1	430			448	430	18	4.0%
20. Wood	18			1	1	8			2	2	7	10			3	10	1			258		321	258	63	19.6%
26. Out of District	3		1	6	4	6	1	9	1	1	7		1	8	7	1	8	3	5	1		73	-	73	100.0%
Enroll	430	503	427	688	192	263	395	354	398	215	341	457	216	621	215	342	505	464	482	302	-	7,810	7,049	761	9.7%
Live & Enroll	388	457	369	663	172	212	360	323	364	178	289	407	200	589	178	297	467	448	430	258	-	7,049			
Transfer In	42	46	58	25	20	51	35	31	34	37	52	50	16	32	37	45	38	16	52	44	-	761			
Transfer (% of Enroll)	9.8%	9.1%	13.6%	3.6%	10.4%	19.4%	8.9%	8.8%	8.5%	17.2%	15.2%	10.9%	7.4%	5.2%	17.2%	13.2%	7.5%	3.4%	10.8%	14.6%		9.7%			

Table 11. 2018-19 Grades 7-12 student live-enroll table.

		NC	NW	SE	C	L	T	W						
		ENROLL												
		20.	21.	22.	23.	24	25	26	27	Live	Live & Enroll	Transfer Out	Transfer (% of Live)	
LIVE	20. NCJH	535	90	7						632	535	97	15.3%	
	21. NWJH	21	607	37						665	607	58	8.7%	
	22. SEJH	2	9	739						750	739	11	1.5%	
	23. CHS				1,402	4		42		1,448	1,402	46	3.2%	
	24. LHS				41	879		177		1,097	879	218	19.9%	
	25. THS									-				
	26. WHS				141	45		1,281		1,467	1,281	186	12.7%	
	27. Out of District	12	4	6	21	20	-	26		89	-	89	100.0%	
	Enroll	570	710	789	1,605	948	-	1,526	-	6,148	5,443	705	11.5%	
	Live & Enroll	535	607	739	1,402	879		1,281	-	5,443				
	Transfer In	35	103	50	203	69		245	-	705				
	Transfer (% of Enroll)	6.1%	14.5%	6.3%	12.6%	7.3%		16.1%		11.5%				

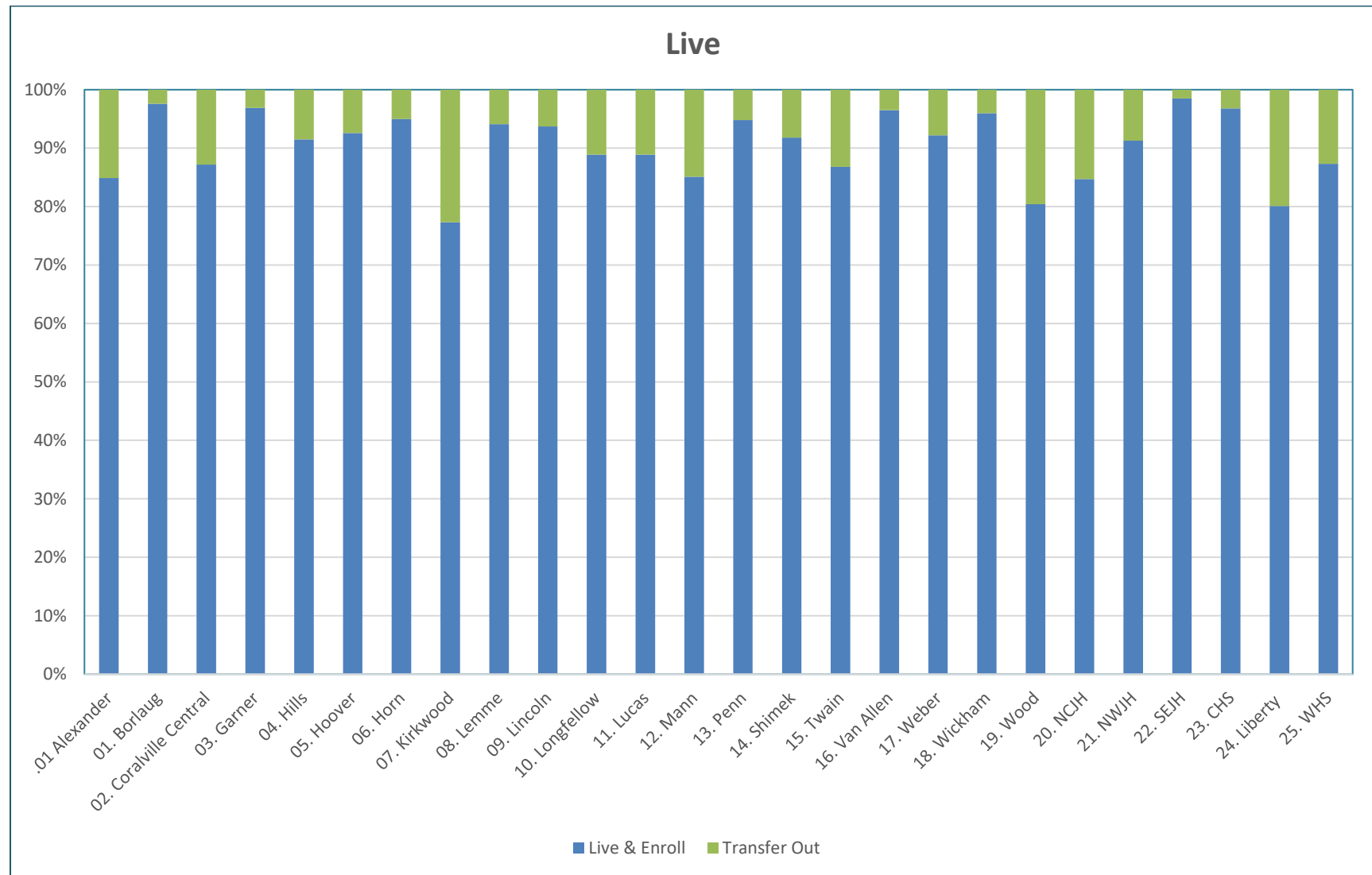
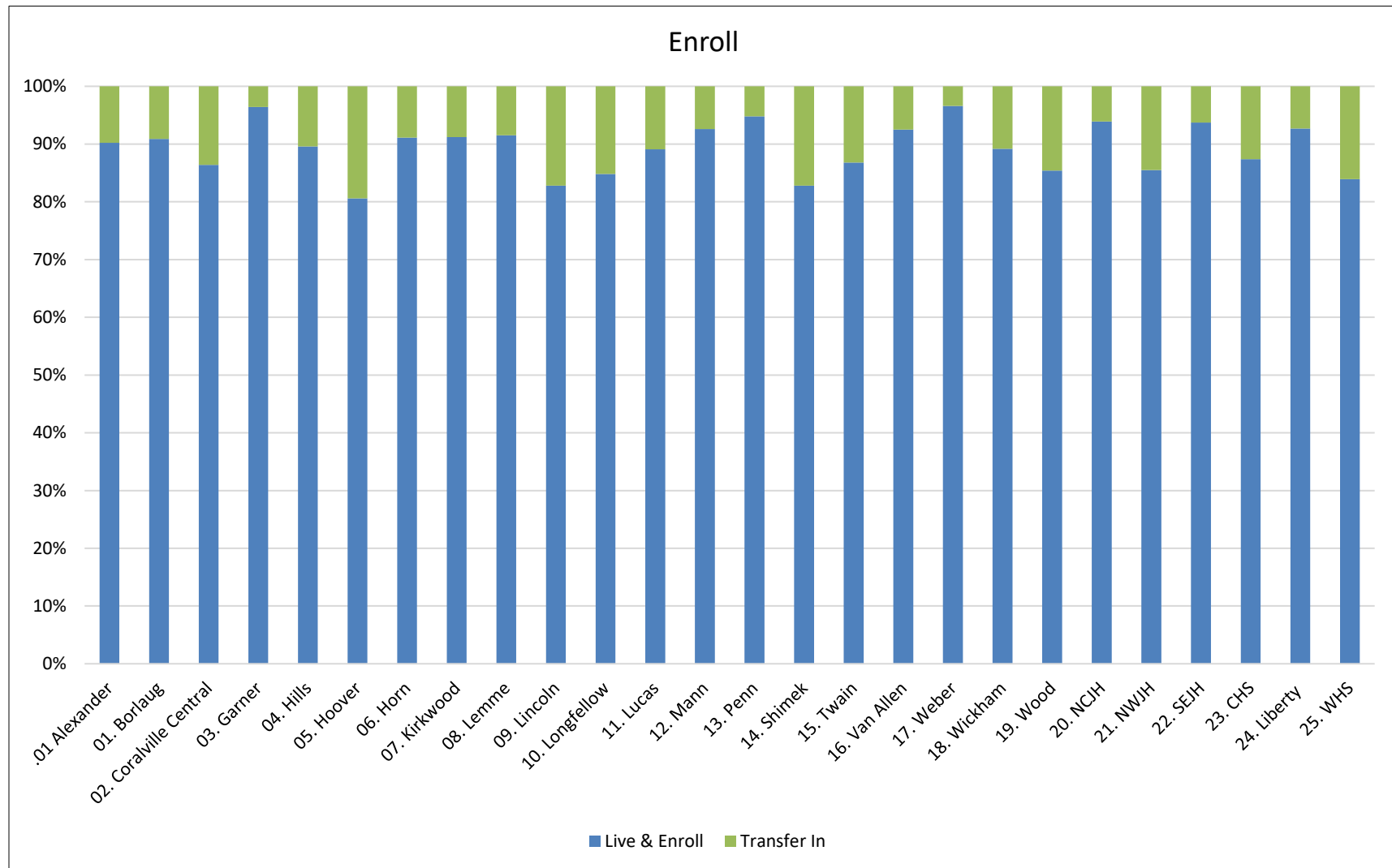
Figure 4. Percent of students enrolling or transferring out of the school boundary within which they live.

Figure 5. Percent of students living or transferring in to the school boundary within which they enroll.

ENROLLMENT PROJECTIONS

PROJECTIONS BASED ON WHERE STUDENTS ATTEND

The District has regularly contracted with DeJong-Richter for development of enrollment and student population projections. The most recent set of projections were completed in Fall of 2016. Table 12 shows the 2018-19 enrollment projections from the three DeJong-Richter reports by grade level, compared with our actual student enrollment in 2018-19. The projections completed in 2016 were 140 students over the actual enrollment, a difference of 1%. While K-6 enrollment lags projections by 2.3%, high school enrollment is outpacing projections by .9%.

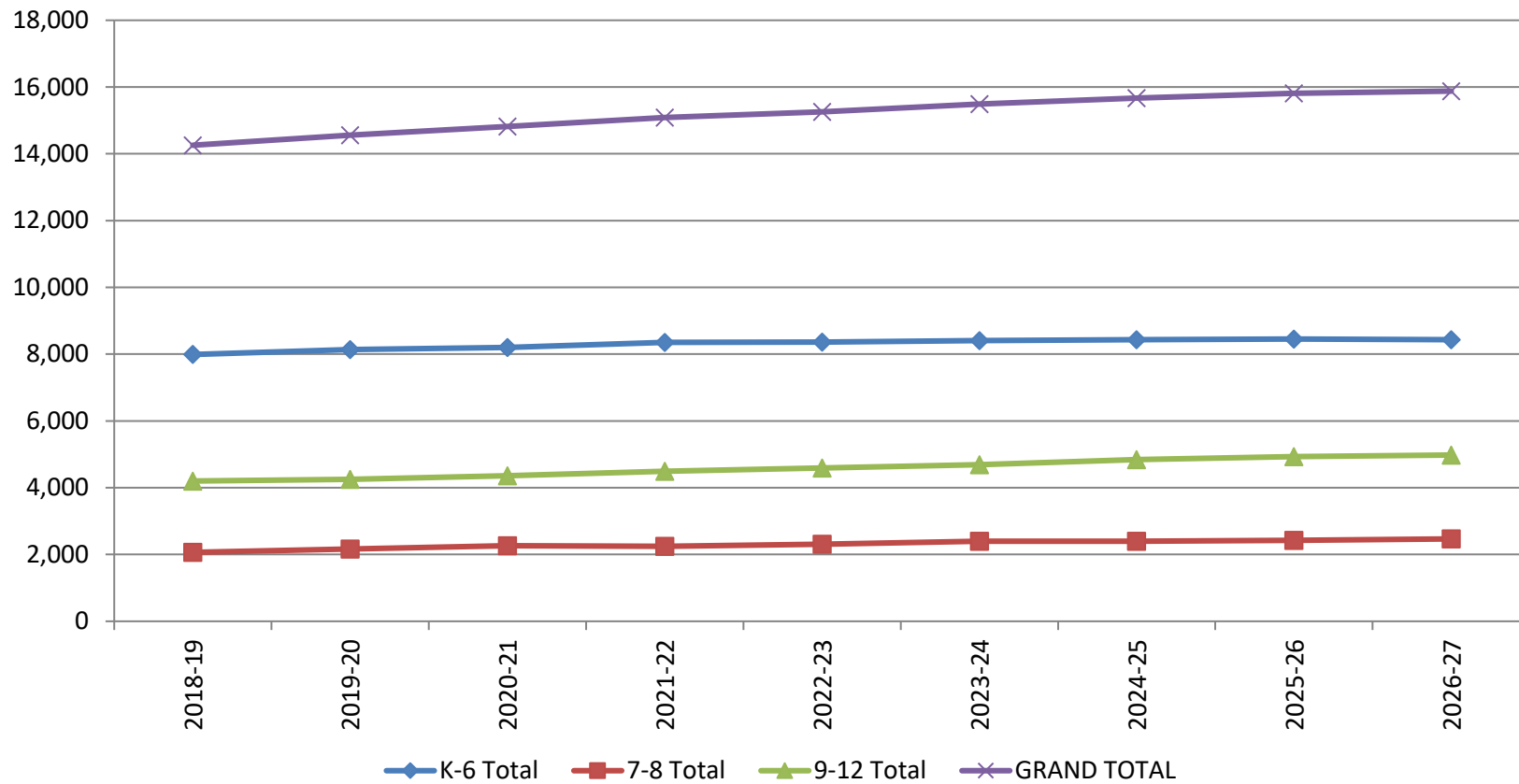
Table 13 shows the 2016 report's enrollment projections for years through 2026-27. The district is expected to add approximately 1,600 students over the next 9 years based upon these projections.

Table 12. Enrollment projections.

Grade	Actual	11/26/13 Projections			2/2/15 Projections			11/28/16 Projections		
		Predicted	Diff.	% Diff.	Predicted	Diff.	% Diff.	Predicted	Diff.	% Diff.
K	1,161	1,202	-41	-3.5%	1,251	-90	-7.8%	1,175	-14	-1.2%
1	1,148	1,257	-109	-9.5%	1,236	-88	-7.7%	1,190	-42	-3.7%
2	1,089	1,213	-124	-11.4%	1,237	-148	-13.6%	1,144	-55	-5.1%
3	1,167	1,278	-111	-9.5%	1,224	-57	-4.9%	1,176	-9	-0.8%
4	1,046	1,223	-177	-16.9%	1,128	-82	-7.8%	1,079	-33	-3.2%
5	1,125	1,274	-149	-13.2%	1,194	-69	-6.1%	1,135	-10	-0.9%
6	1,074	1,198	-124	-11.5%	1,127	-53	-4.9%	1,092	-18	-1.7%
K-6 Total	7,810	8,645	-835	-10.7%	8,397	-587	-7.5%	7,991	-181	-2.3%
7	1073	1,112	-39	-3.6%	1,083	-10	-0.9%	1,065	8	0.7%
8	996	1,031	-35	-3.5%	993	3	0.3%	1,000	-4	-0.4%
7-8 Total	2,069	2,143	-74	-3.6%	2,076	-7	-0.3%	2,065	4	0.2%
9	1,084	1,068	16	1.5%	1,036	48	4.4%	1,103	-19	-1.8%
10	1,069	977	92	8.6%	985	84	7.9%	1,021	48	4.5%
11	1,047	954	93	8.9%	968	79	7.5%	1,014	33	3.2%
12	1,039	1,063	-24	-2.3%	1,084	-45	-4.3%	1,064	-25	-2.4%
9-12 Total	4,239	4,062	177	4.2%	4,073	166	3.9%	4,202	37	0.9%
GRAND TOTAL	14,118	14,850	-732	-4.9%	14,546	-428	-2.9%	14,258	-140	-1.0%

Table 13. 2018-19 Nine-year enrollment projections by grade. (Attend)

Grade	2018-19	2019-20	2020-21	2021-22	2022-23	2023-24	2024-25	2025-26	2026-27
K	1,175	1,217	1,188	1,192	1,196	1,197	1,196	1,197	1,196
1	1,190	1,185	1,226	1,203	1,205	1,206	1,207	1,206	1,206
2	1,144	1,188	1,181	1,226	1,198	1,202	1,201	1,204	1,204
3	1,176	1,141	1,185	1,173	1,214	1,189	1,195	1,195	1,197
4	1,079	1,188	1,155	1,197	1,185	1,225	1,202	1,206	1,207
5	1,135	1,073	1,189	1,155	1,193	1,184	1,228	1,202	1,206
6	1,092	1,149	1,078	1,205	1,171	1,207	1,201	1,244	1,217
K-6 Total	7,991	8,141	8,202	8,351	8,362	8,410	8,430	8,454	8,433
7	1,065	1,101	1,158	1,088	1,217	1,180	1,218	1,212	1,254
8	1,000	1,065	1,102	1,159	1,087	1,217	1,179	1,217	1,213
7-8 Total	2,065	2,166	2,260	2,247	2,304	2,397	2,397	2,429	2,467
9	1,103	1,041	1,109	1,146	1,207	1,132	1,267	1,227	1,267
10	1,021	1,111	1,048	1,116	1,154	1,215	1,137	1,275	1,233
11	1,014	1,020	1,109	1,047	1,115	1,153	1,213	1,135	1,273
12	1,064	1,082	1,090	1,185	1,118	1,188	1,227	1,294	1,206
9-12 Total	4,202	4,254	4,356	4,494	4,594	4,688	4,844	4,931	4,979
GRAND TOTAL	14,258	14,561	14,818	15,092	15,260	15,495	15,671	15,814	15,879

Figure 6. 10-year enrollment projections by grade range.

DEMOGRAPHICS

Demographic information on race/ethnicity, socioeconomic status, English language learners (ELL), home language, and special education is presented next.

RACE/ETHNICITY

The racial and ethnic diversity of the district continues to grow. Tables 14 and 15 present information of race and ethnicity. **From 2017-18 to 2018-19, the percent of minority students increased 2.4%.**

Table 14. Race/ethnicity comparison, 2017-18 to 2018-19.

Race/Ethnicity	2017-18	2018-19	% Growth/Reduction
Asian	6.1%	5.8%	-4.9%
Black	19.2%	19.9%	3.6%
Hispanic	11.5%	11.8%	2.6%
Multi-racial	5.2%	5.6%	7.7%
Native American/Alaskan	0.3%	0.2%	-33.3%
Pacific Islander/Other	0.1%	0.1%	0.0%
Total Minority	42.4%	43.4%	2.4%
White	57.6%	56.6%	-1.7%
GRAND TOTAL	100.0%	100.0%	

Table 15. Race/ethnicity by school.

*cell sizes less than 10 have been suppressed.

School	Asian	Black	Hispanic	Multi-racial	Native Am/Alaskan	Pacific Isl/Other	Total Minority	White	Grand Total
Alexander ES	3.9%	45.0%	17.2%	6.9%	0.0%	*	72.0%-76.0%	24.0%-28.0%	100%
Borlaug ES	22.8%	29.3%	5.0%	2.8%	*	0.0%	58.0%-62.0%	38.0%-42.0%	100%
Coralville Central ES	6.5%	26.7%	10.4%	5.6%	*	0.0%	47.0%-51.0%	49.0%-53.0%	100%
Garner ES	3.1%	7.6%	6.5%	7.4%	0.0%	*	23.0%-27.0%	73.0%-77.0%	100%
Hills ES	*	8.1%	37.6%	9.5%	0.0%	*	53.0%-57.0%	43.0%-47.0%	100%
Hoover ES	*	8.9%	7.9%	4.3%	0.0%	0.0%	21.0%-25.0%	75.0%-79.0%	100%
Horn ES	10.6%	27.6%	7.8%	4.6%	*	0.0%	48.0%-52.0%	48.0%-52.0%	100%
Kirkwood ES	*	52.6%	12.3%	9.7%	0.0%	0.0%	74.0%-78.0%	22.0%-26.0%	100%
Lemme ES	2.5%	7.5%	14.8%	7.5%	*	*	31.0%-35.0%	65.0%-69.0%	100%
Lincoln ES	6.5%	5.6%	6.0%	11.2%	0.0%	0.0%	29.3%	70.7%	100%
Longfellow ES	*	15.9%	4.8%	5.1%	*	0.0%	26.0%-30.0%	70.0%-74.0%	100%
Lucas ES	4.8%	21.9%	21.2%	7.7%	0.0%	0.0%	55.6%	44.4%	100%
Mann ES	*	12.2%	27.5%	7.4%	0.0%	0.0%	46.0%-50.0%	50.0%-54.0%	100%
Penn ES	*	11.1%	4.1%	6.5%	*	0.0%	21.0%-25.0%	75.0%-79.0%	100%
Shimek ES	*	8.2%	5.2%	5.2%	*	0.0%	18.0%-22.0%	78.0%-82.0%	100%
Twain ES	*	29.4%	29.4%	6.1%	0.0%	0.0%	64.0%-68.0%	32.0%-36.0%	100%
Van Allen ES	7.5%	7.5%	7.3%	5.6%	*	0.0%	26.0%-30.0%	70.0%-74.0%	100%
Weber ES	7.1%	30.8%	2.8%	3.6%	*	0.0%	44.0%-48.0%	52.0%-56.0%	100%
Wickham ES	18.0%	3.7%	5.8%	7.3%	0.0%	0.0%	34.9%	65.1%	100%
Wood ES	3.3%	48.7%	22.0%	4.2%	*	0.0%	76.0%-80.0%	20.0%-24.0%	100%
OFFSITE	*	27.4%	11.5%	*	0.0%	0.0%	44.0%-48.0%	52.0%-56.0%	100%
ES Total	6.0%	20.7%	11.4%	6.1%	0.2%	*	43.0%-47.0%	53.0%-57.0%	100%
North Central JH	3.0%	10.7%	8.2%	5.4%	*	0.0%	25.0%-29.0%	71.0%-75.0%	100%
Northwest JH	10.6%	25.6%	13.0%	4.6%	*	*	52.0%-56.0%	44.0%-48.0%	100%
South East JH	1.6%	18.8%	17.4%	4.4%	*	0.0%	40.0%-44.0%	56.0%-60.0%	100%
JH Total	5.1%	18.9%	13.3%	4.8%	*	*	40.0%-44.0%	56.0%-60.0%	100%
City HS	3.4%	17.8%	17.1%	4.2%	*	*	40.0%-44.0%	56.0%-60.0%	100%
Liberty HS	2.1%	16.7%	8.4%	4.3%	*	*	31.0%-35.0%	65.0%-69.0%	100%
Tate HS	0.0%	36.9%	11.3%	*	0.0%	*	51.0%-55.0%	45.0%-49.0%	100%
West HS	11.2%	19.2%	8.8%	5.7%	0.0%	*	43.0%-47.0%	53.0%-57.0%	100%
HS Total	5.8%	18.8%	11.9%	4.8%	0.3%	*	40.0%-44.0%	56.0%-60.0%	100%
GRAND TOTAL	5.8%	19.9%	11.8%	5.6%	0.2%	0.1%	43.4%	56.6%	100%

SOCIOECONOMIC STATUS

School districts use the number of students approved for free or reduced price lunch (FRL) as an indicator of socioeconomic status. At the elementary level, the building percent of FRL range from 9.1% at Wickham ES to 80.1% at Kirkwood ES. At the junior high level, the range is from 23.9% at North Central JH to 44.6% at Northwest JH. The three comprehensive high schools range from 32.7% at West HS to 33.3% at Liberty HS to 39.5% at City HS, and Tate HS is at 66.9% FRL. Thirteen schools had FRL averages over the average for the grades they serve, and 13 schools had FRL averages over the overall district average.

Tables 16 through 18 and figure 7 present information on FRL over the last 10 years.

Table 16. 2018-19 Socioeconomic status by building

School	K-12 Enrollment*	FRL	%FRL		
Alexander ES	424	305	71.9%	†	‡
Borlaug ES	503	185	36.8%		
Coralville Central ES	424	214	50.5%	†	‡
Garner ES	687	155	22.6%		
Hills ES	190	147	77.4%	†	‡
Hoover ES	257	51	19.8%		
Horn ES	390	176	45.1%	†	‡
Kirkwood ES	352	282	80.1%	†	‡
Lemme ES	395	116	29.4%		
Lincoln EES	214	20	9.3%		
Longfellow ES	337	92	27.3%		
Lucas ES	454	261	57.5%	†	‡
Mann ES	209	106	50.7%	†	‡
Penn ES	619	136	22.0%		
Shimek ES	211	39	18.5%		
Twain ES	340	268	78.8%	†	‡
Van Allen ES	505	122	24.2%		
Weber ES	459	170	37.0%		
Wickham ES	481	44	9.1%		
Wood ES	301	232	77.1%	†	‡
ES Total	7752	3121	40.3%		
North Central JH	557	133	23.9%		
Northwest JH	702	313	44.6%	†	‡
South East JH	780	334	42.8%	†	‡
JH Total	2039	780	38.3%		
City HS	1581	625	39.5%	†	‡
Liberty HS	943	314	33.3%		
Tate HS	160	107	66.9%	†	‡
West HS	1515	495	32.7%		
HS Total	4199	1541	36.7%		
GRAND TOTAL	13990	5442	38.9%		

* Due to federal rules for FRL, some students included in the district enrollment headcount are not included here,

† Over K-6, 7-8, or 9-12 Average,

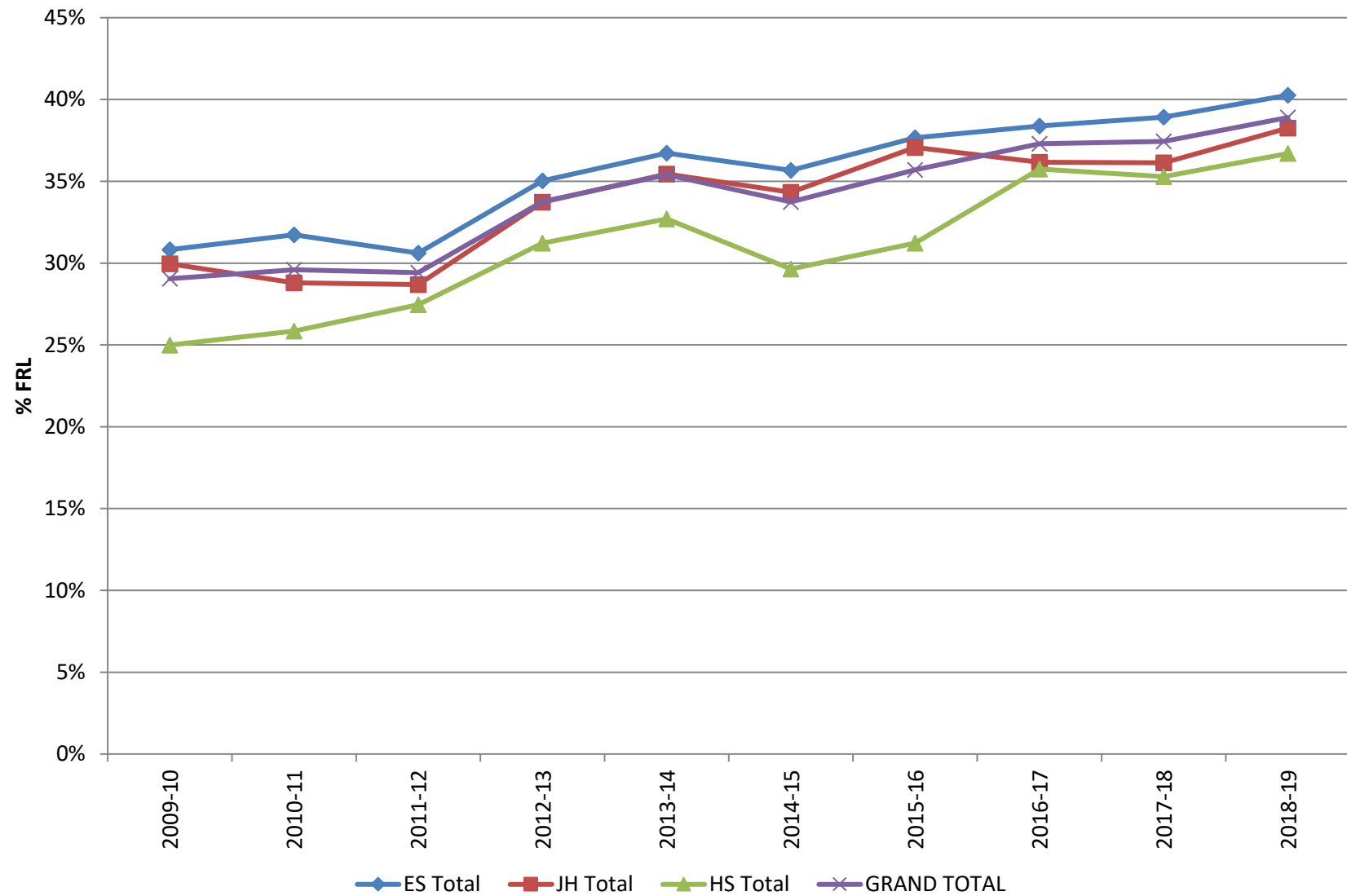
‡ Over District K-12 Average

Table 17. Socioeconomic status by building comparison, 2017-18 to 2018-19.

School	2017-18	2018-19	% Growth/Reduction
Alexander ES	71.5%	71.9%	0.6%
Borlaug ES	30.6%	36.8%	20.3%
Coralville Central ES	52.0%	50.5%	-2.9%
Garner ES	18.7%	22.6%	20.6%
Hills ES	74.9%	77.4%	3.3%
Hoover ES	17.8%	19.8%	11.7%
Horn ES	42.0%	45.1%	7.5%
Kirkwood ES	75.6%	80.1%	6.0%
Lemme ES	28.7%	29.4%	2.2%
Lincoln ES	12.7%	9.3%	-26.2%
Longfellow ES	18.6%	27.3%	47.0%
Lucas ES	56.5%	57.5%	1.8%
Mann ES	51.8%	50.7%	-2.1%
Penn ES	23.0%	22.0%	-4.6%
Shimek ES	18.6%	18.5%	-0.7%
Twain ES	78.9%	78.8%	-0.1%
Van Allen ES	23.9%	24.2%	1.0%
Weber ES	36.2%	37.0%	2.2%
Wickham ES	12.2%	9.1%	-24.8%
Wood ES	74.5%	77.1%	3.4%
ES Total	38.9%	40.3%	3.5%
North Central JH	21.1%	23.9%	13.2%
Northwest JH	42.1%	44.6%	6.0%
South East JH	41.3%	42.8%	3.6%
JH Total	36.1%	38.3%	6.0%
City HS	39.7%	39.5%	-0.4%
Liberty HS	35.0%	33.3%	-4.8%
Tate HS	64.6%	66.9%	3.5%
West HS	28.0%	32.7%	16.8%
HS Total	35.3%	36.7%	4.0%
GRAND TOTAL	37.4%	38.9%	3.9%

Table 18. Socioeconomic status 10-year trend by building.

School	YEAR									
	2009-10	2010-11	2011-12	2012-13	2013-14	2014-15	2015-16	2016-17	2017-18	2018-19
Alexander ES							74.1%	73.7%	71.5%	71.9%
Borlaug ES				26.3%	25.9%	28.3%	32.0%	32.2%	30.6%	36.8%
Coralville Central ES	28.4%	31.6%	26.8%	33.5%	42.0%	38.5%	47.8%	49.8%	52.0%	50.5%
Garner ES		23.0%	21.2%	21.0%	20.6%	18.6%	19.8%	18.2%	18.7%	22.6%
Hills ES	56.3%	56.1%	59.1%	63.9%	67.3%	63.1%	75.5%	75.5%	74.9%	77.4%
Hoover ES	22.9%	24.4%	21.9%	25.7%	23.8%	20.6%	18.0%	14.1%	17.8%	19.8%
Horn ES	18.4%	19.9%	20.1%	28.6%	35.9%	37.6%	41.2%	40.7%	42.0%	45.1%
Kirkwood ES	59.1%	62.6%	60.7%	72.0%	73.9%	72.8%	73.8%	76.9%	75.6%	80.1%
Lemme ES	24.7%	26.7%	24.4%	25.5%	26.6%	26.3%	27.4%	30.7%	28.7%	29.4%
Lincoln ES	5.3%	4.9%	5.4%	5.9%	4.3%	7.3%	7.2%	10.6%	12.7%	9.3%
Longfellow ES	16.1%	17.7%	19.5%	19.7%	18.5%	20.2%	23.1%	20.8%	18.6%	27.3%
Lucas ES	37.7%	44.5%	46.5%	54.0%	54.4%	57.6%	61.1%	59.4%	56.5%	57.5%
Mann ES	51.4%	50.4%	53.9%	55.5%	56.1%	49.8%	48.4%	48.8%	51.8%	50.7%
Penn ES	27.4%	22.8%	21.7%	24.2%	22.2%	19.2%	18.1%	16.1%	23.0%	22.0%
Shimek ES	8.0%	9.5%	9.6%	13.1%	12.0%	14.4%	16.5%	17.9%	18.6%	18.5%
Twain ES	66.4%	80.2%	69.0%	78.6%	77.1%	75.9%	78.9%	78.2%	78.9%	78.8%
Van Allen ES	21.3%	19.1%	17.7%	19.9%	19.4%	16.8%	19.3%	23.4%	23.9%	24.2%
Weber ES	16.2%	14.8%	15.3%	35.1%	41.0%	42.0%	32.2%	36.2%	36.2%	37.0%
Wickham ES	2.8%	5.5%	5.7%	7.1%	10.8%	10.4%	15.3%	13.4%	12.2%	9.1%
Wood ES	64.8%	68.4%	62.7%	77.1%	78.8%	74.0%	74.7%	71.9%	74.5%	77.1%
ES Total	30.8%	31.7%	30.6%	35.0%	36.7%	35.7%	37.7%	38.4%	38.9%	40.3%
North Central JH	15.4%	16.0%	17.6%	20.0%	21.9%	19.7%	18.0%	17.4%	21.1%	23.9%
Northwest JH	32.7%	29.8%	26.5%	31.9%	35.5%	34.0%	38.2%	40.2%	42.1%	44.6%
South East JH	35.9%	35.5%	36.8%	43.8%	43.7%	43.3%	48.2%	45.7%	41.3%	42.8%
JH Total	30.0%	28.8%	28.7%	33.7%	35.5%	34.3%	37.1%	36.2%	36.1%	38.3%
City HS	27.5%	28.6%	31.5%	35.6%	38.6%	36.9%	37.5%	42.3%	39.7%	39.5%
Liberty HS									35.0%	33.3%
Tate HS	69.2%	67.8%	56.2%	76.0%	80.6%	49.7%	63.9%	68.2%	64.6%	66.9%
West HS	20.1%	21.1%	22.0%	24.7%	24.6%	22.3%	23.4%	28.0%	28.0%	32.7%
HS Total	25.0%	25.8%	27.5%	31.2%	32.7%	29.6%	31.2%	35.8%	35.3%	36.7%
GRAND TOTAL	29.1%	29.6%	29.4%	33.8%	35.4%	33.7%	35.7%	37.3%	37.4%	38.9%

Figure 7. Socioeconomic status 10-year trend by grand range.

ENGLISH LANGUAGE LEARNERS (ELL)

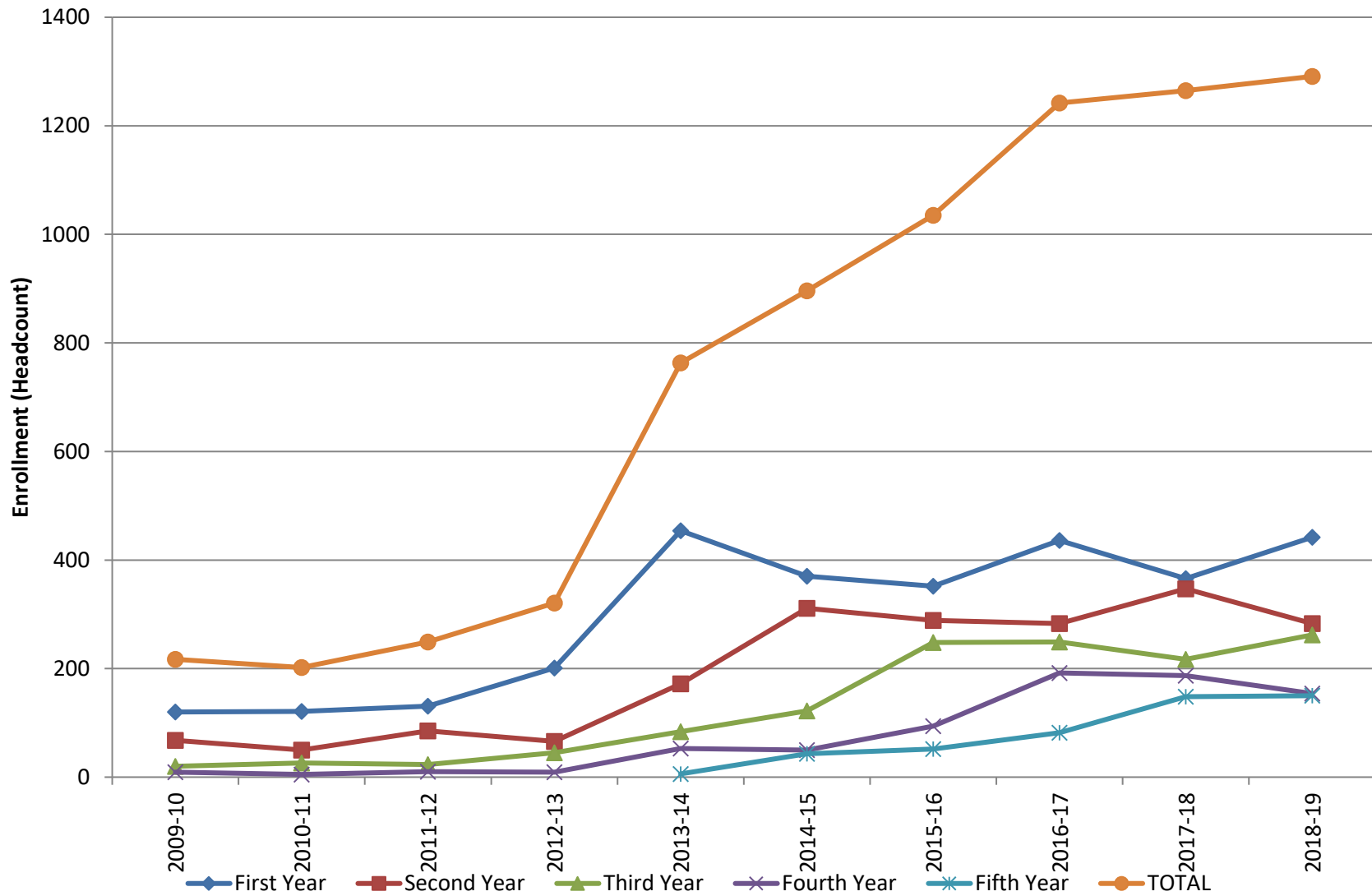
English language learners (ELL) are students who speak a language other than English as their primary language. The number of students in ELL has increased dramatically over the last 10 years. **Since 2009-10, the number of students in ELL has increased 495%.** Tables 19 and 20 and figure 8 present information on ELL over the last 10 years.

Table 19. English Language Learners (ELL) comparison, 2017-18 to 2018-19.

Year Funded in Program	2017-18	2018-19	% Growth/Reduction
First Year	366	442	20.8%
Second Year	347	283	-18.4%
Third Year	217	262	20.7%
Fourth Year	187	154	-17.6%
Fifth Year	148	150	1.4%
TOTAL	1265	1291	2.1%

Table 20. English Language Learners (ELL) 10-year trend.

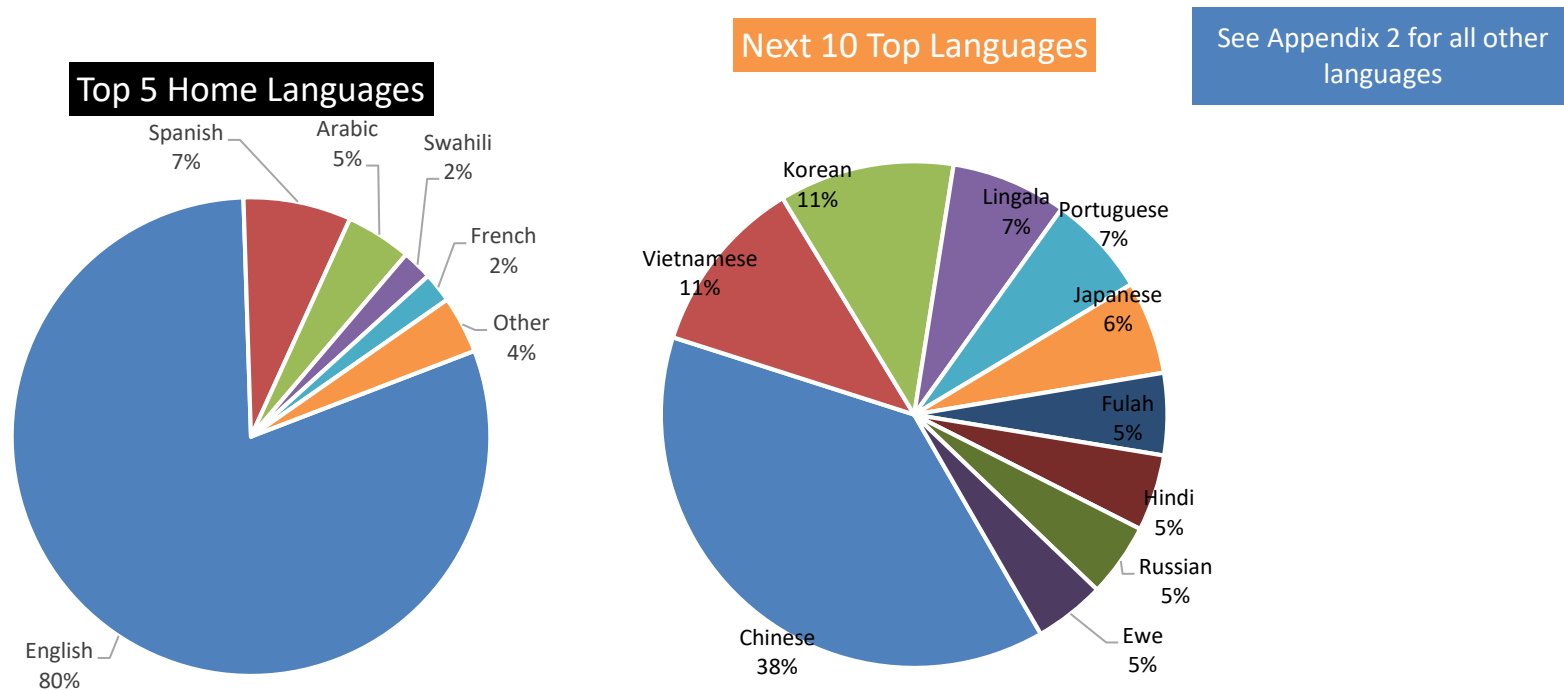
Year Funded in Program	YEAR									
	2009-10	2010-11	2011-12	2012-13	2013-14	2014-15	2015-16	2016-17	2017-18	2018-19
First Year	120	121	131	201	454	370	352	436	366	442
Second Year	68	50	85	66	172	311	289	283	347	283
Third Year	20	26	23	45	84	122	248	249	217	262
Fourth Year	9	5	10	9	53	50	94	192	187	154
Fifth Year					6	43	52	82	148	150
TOTAL	217	202	249	321	763	896	1035	1242	1265	1291

Figure 8. English Language Learners (ELL) 10-year trend.

HOME LANGUAGE

For many families, a language other than English is the primary language spoken at home. In 2018-19, **district students spoke 94 different languages in their homes**. The top five languages spoken were English (80%), Spanish (7%), Arabic (5%), Swahili (2%), and French (2%). The other 89 languages were spoken by 4% of our students.

Figure 9. Home languages



SPECIAL EDUCATION

Depending on their needs, some students are provided additional services through the special education program. Tables 21 through 23 and figure 10 present information on special education students, including gender and race/ethnicity breakdowns, over the last 10 years. For purposes of funding, special education students are “weighted” based on a level system (1, 2, or 3). In the tables for special education, both headcounts and weighted enrollments are provided. In comparing special education weighted enrollment to district-wide K-12 weighted enrollment over the last 10 years, the percent of students served by special education services has decreased from 14.4% in 2009-10 to 9.6% this year.

Table 21. Special education headcount and weighted enrollment comparison, 2017-18 to 2018-19.

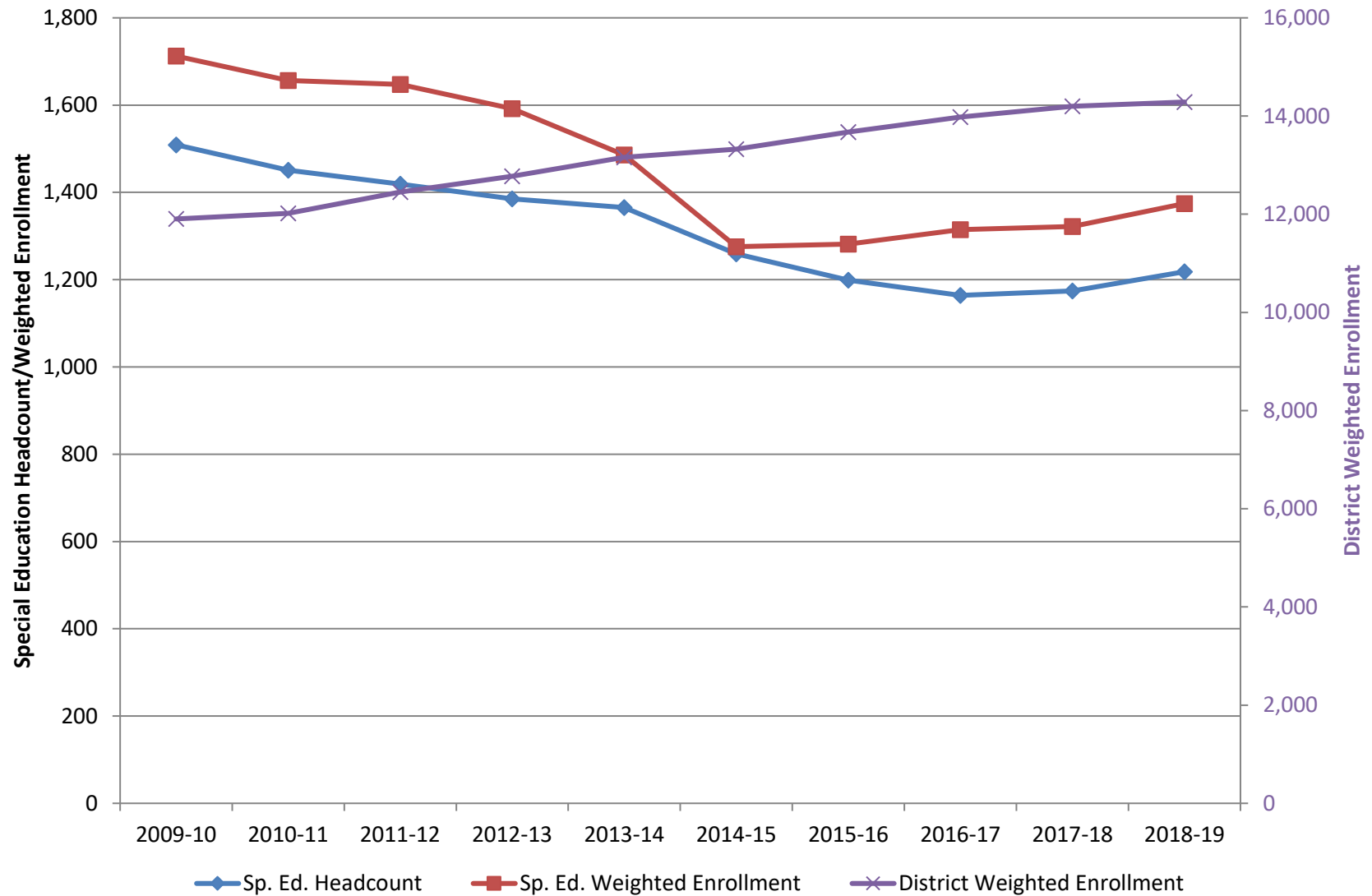
	2017-18	2018-19	% Growth/Reduction
Special Education Headcount	1,174	1,218	3.7%
Special Education Weighted Enrollment	1,321.7	1,374.1	4.0%
Special Education % of District Weighted Enrollment	9.3%	9.6%	3.3%
District Weighted Enrollment	14,197.6	14,285.1	0.6%

Table 22. Proportion of special education students versus all students, by race/ethnicity and by gender.

% of Row	SP. ED. STUDENTS			ALL STUDENTS		
	Male	Female	Total	Male	Female	Total
Minority	67.5%	32.5%	100.0%	51.7%	48.3%	100.0%
White	64.5%	35.5%	100.0%	50.1%	49.9%	100.0%
Total	66.0%	34.0%	100.0%	50.8%	49.2%	100.0%
% of Column	Male	Female	Total	Male	Female	Total
Minority	51.9%	48.5%	50.7%	44.2%	42.6%	43.4%
White	48.1%	51.5%	49.3%	55.8%	57.4%	56.6%
Total	100.0%	100.0%	100.0%	100.0%	100.0%	100.0%

Table 23. Special education headcount and weighted enrollment 10-year trend.

	2009-10	2010-11	2011-12	2012-13	2013-14	2014-15	2015-16	2016-17	2017-18	2018-19
Sp. Ed. Headcount	1,509	1,451	1,419	1,385	1,365	1,259	1,199	1,164	1,174	1,218
Sp. Ed. Weighted Enrollment	1,712.4	1,656.2	1,647.5	1,591.9	1,485.6	1,275.7	1,281.32	1,314.5	1,321.7	1,374.1
Sp. Ed. % of District Weighted Enrollment	14.4%	13.8%	13.2%	12.5%	11.3%	9.6%	9.4%	9.4%	9.3%	9.6%
District Weighted Enrollment	11,903.8	12,017.6	12,454.0	12,774.4	13,159.8	13,328.0	13,671.2	13,981.6	14,197.6	14,285.1

Figure 10. Special education headcount and weighted enrollment 10-year trend. Note: district enrollment axis is on the right.

CLASS SIZE

The Board of Education's Superintendent Directions include a policy on class size. The related portions of the Superintendent Directions follow. As with the other portions of this report, class size information is based on a 10/1/18 snapshot.

BOARD POLICY

SUPERINTENDENT DIRECTIONS

[Portions of the Superintendent Directions not relevant to this report have been removed for brevity.]

In the section entitled Ends Policies we state the desired educational outcomes for the District. It is the role of the Superintendent to provide the means to these ends. The Board does not attempt to prescribe the methods or practices of the Superintendent in accomplishing the District goals. The following Superintendent Directions define those procedures and behaviors used to accomplish these goals. Within these boundaries, the Superintendent is free to take whatever steps seem advisable to reach District goals without further authorization from the Board.

GLOBAL SUPERINTENDENT DIRECTIONS (LEVEL 1):

The Superintendent shall ensure that practices, activities, decisions, and organizational circumstances comply with (a) any applicable or

relevant requirements of the U.S. or Iowa Constitutions, laws, court decisions, administrative regulations and requirements;(b) binding contracts; and, (c) commonly accepted standards of professional and business ethics and prudence.

LEARNING ENVIRONMENT (LEVEL 2j):

The Superintendent shall provide a process for continual review and improvement of the district's learning environment and learning supports that is data-driven and research based.

The Superintendent shall (LEVEL 3j):

6. Provide pupil teacher ratios that are educationally appropriate and fiscally sustainable. Annual pupil teacher ratio review and implementation shall consider all factors relevant to academic opportunity and student achievement and include, but not be limited to, the following access to opportunity gaps: English Language Learner status, Special Education Learner status, and Socio-Economic Learner status.

Identified Opportunity Gaps	Grades K-2	Grades 3-6	Grades 7-8	Grades 9-12
Low	26	30	32	34
Average	24	28	30	32
High	20	24	26	28

ELEMENTARY CLASS SIZE

The following tables present class sizes by grade, disaggregated by school. The tables show average homeroom class size. Staffing is based on the latter. Elementary average class sizes ranged from **11 students to 26 students at the K-2 level**, and from **11 students to 30 students at the grades 3-6 level**. Home school students are not represented in the following counts. Tables 24 through 30 and figures 11 and 12 provide elementary average class size data.

Questions about Elementary Class Size should be directed to the applicable building principal or Amy Kortemeyer, Assistant Superintendent.

Table 24. Kindergarten enrollment, assigned teacher FTE, and class sizes disaggregated by school.

School	Enrollment	FTE	Average Homeroom Class Size
Alexander ES	76	4	19.0
Borlaug ES	74	3	24.7
Coralville Central ES	62	3	20.7
Garner ES	95	4	23.8
Hills ES	28	2	14.0
Hoover ES	38	2	19.0
Horn ES	73	3	24.3
Kirkwood ES	50	3	16.7
Lemme ES	64	3	21.3
Lincoln ES	34	2	17.0
Longfellow ES	39	2	19.5
Lucas ES	65	3	21.7
Mann ES	29	2	14.5
Penn ES	86	4	21.5
Shimek ES	40	2	20.0
Twain ES	53	3	17.7
Van Allen ES	72	3	24.0
Weber ES	65	3	21.7
Wickham ES	67	3	22.3
Wood ES	43	3	14.3
Total	1153	57	20.2

Table 25. First Grade enrollment, assigned teacher FTE, and class sizes disaggregated by school.

School	Enrollment	FTE	Average Homeroom Class Size
Alexander ES	65	4	16.3
Borlaug ES	81	4	20.3
Coralville Central ES	63	3	21.0
Garner ES	121	5	24.2
Hills ES	26	2	13.0
Hoover ES	43	2	21.5
Horn ES	55	3	18.3
Kirkwood ES	44	3	14.7
Lemme ES	55	3	18.3
Lincoln ES	24	1	24.0
Longfellow ES	48	2	24.0
Lucas ES	74	4	18.5
Mann ES	24	2	12.0
Penn ES	97	4	24.3
Shimek ES	25	1.5	16.7
Twain ES	49	3	16.3
Van Allen ES	57	3	19.0
Weber ES	85	4	21.3
Wickham ES	59	3	19.7
Wood ES	45	3	15.0
Total	1140	59.5	19.2

Table 26. Second Grade enrollment, assigned teacher FTE, and class sizes disaggregated by school.

School	Enrollment	FTE	Average Homeroom Class Size
Alexander ES	59	4	14.8
Borlaug ES	68	3	22.7
Coralville Central ES	60	3	20.0
Garner ES	85	4	21.3
Hills ES	21	1.5	14.0
Hoover ES	38	2	19.0
Horn ES	45	2	22.5
Kirkwood ES	49	3	16.3
Lemme ES	58	3	19.3
Lincoln ES	36	2	18.0
Longfellow ES	47	2	23.5
Lucas ES	60	3	20.0
Mann ES	27	2	13.5
Penn ES	104	4	26.0
Shimek ES	26	1.5	17.3
Twain ES	47	3	15.7
Van Allen ES	77	3	25.7
Weber ES	64	3	21.3
Wickham ES	69	3	23.0
Wood ES	42	3	14.0
Total	1082	55	19.7

Table 27. Third Grade enrollment, assigned teacher FTE, and class sizes disaggregated by school.

School	Enrollment	FTE	Average Homeroom Class Size
Alexander ES	60	3	20.0
Borlaug ES	67	3	22.3
Coralville Central ES	62	3	20.7
Garner ES	119	4.4	27.0
Hills ES	32	2	16.0
Hoover ES	42	2	21.0
Horn ES	56	2	28.0
Kirkwood ES	57	3	19.0
Lemme ES	52	2	26.0
Lincoln ES	34	2	17.0
Longfellow ES	54	2	27.0
Lucas ES	58	3	19.3
Mann ES	41	2	20.5
Penn ES	88	4	22.0
Shimek ES	29	1	29.0
Twain ES	61	3	20.3
Van Allen ES	73	3	24.3
Weber ES	61	3	20.3
Wickham ES	71	3	23.7
Wood ES	40	2	20.0
Total	1157	52.4	22.1

Table 28. Fourth Grade enrollment, assigned teacher FTE, and class sizes disaggregated by school.

School	Enrollment	FTE	Average Homeroom Class Size
Alexander ES	53	3	17.7
Borlaug ES	66	3	22.0
Coralville Central ES	62	3	20.7
Garner ES	86	3.5	24.6
Hills ES	23	1.5	15.3
Hoover ES	31	2	15.5
Horn ES	56	2	28.0
Kirkwood ES	51	3	17.0
Lemme ES	39	2	19.5
Lincoln ES	37	2	18.5
Longfellow ES	53	2	26.5
Lucas ES	49	2	24.5
Mann ES	22	1	22.0
Penn ES	78	3	26.0
Shimek ES	28	1	28.0
Twain ES	52	3	17.3
Van Allen ES	75	3	25.0
Weber ES	48	2	24.0
Wickham ES	74	3	24.7
Wood ES	51	3	17.0
Total	1034	48.0	21.5

Table 29. Fifth Grade enrollment, assigned teacher FTE, and class sizes disaggregated by school.

School	Enrollment	FTE	Average Homeroom Class Size
Alexander ES	57	3	19.0
Borlaug ES	82	3	27.3
Coralville Central ES	52	2	26.0
Garner ES	96	4.0	24.0
Hills ES	29	2	14.5
Hoover ES	29	1	29.0
Horn ES	53	2	26.5
Kirkwood ES	53	3	17.7
Lemme ES	60	2	30.0
Lincoln ES	28	1	28.0
Longfellow ES	48	2	24.0
Lucas ES	74	4	18.5
Mann ES	32	2	16.0
Penn ES	87	4	21.8
Shimek ES	42	2	21.0
Twain ES	42	2	21.0
Van Allen ES	70	3	23.3
Weber ES	68	3	22.7
Wickham ES	72	3	24.0
Wood ES	46	2	23.0
Total	1120	50.0	22.4

Table 30. Sixth Grade enrollment, assigned teacher FTE, and class sizes disaggregated by school.

School	Enrollment	FTE	Average Homeroom Class Size
Alexander ES	55	3	18.3
Borlaug ES	64	3	21.3
Coralville Central ES	64	3	21.3
Garner ES	84	3.1	27.1
Hills ES	31	2	15.5
Hoover ES	38	2	19.0
Horn ES	51	2	25.5
Kirkwood ES	45	2	22.5
Lemme ES	67	3	22.3
Lincoln ES	22	1	22.0
Longfellow ES	48	2	24.0
Lucas ES	73	3	24.3
Mann ES	32	2	16.0
Penn ES	78	3	26.0
Shimek ES	21	1	21.0
Twain ES	36	2	18.0
Van Allen ES	81	3	27.0
Weber ES	71	3	23.7
Wickham ES	69	3	23.0
Wood ES	34	2	17.0
Total	1064	48.1	22.1

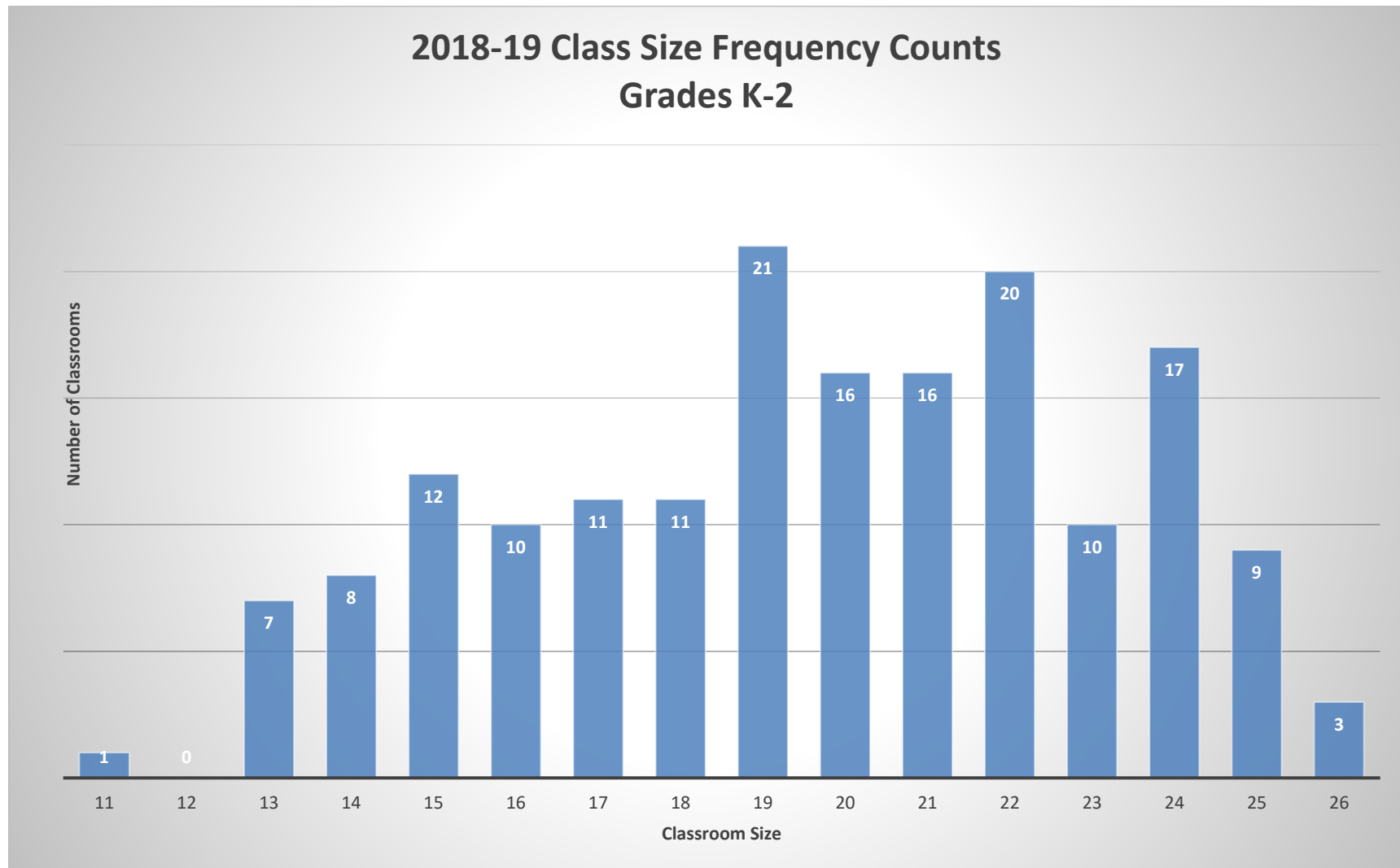
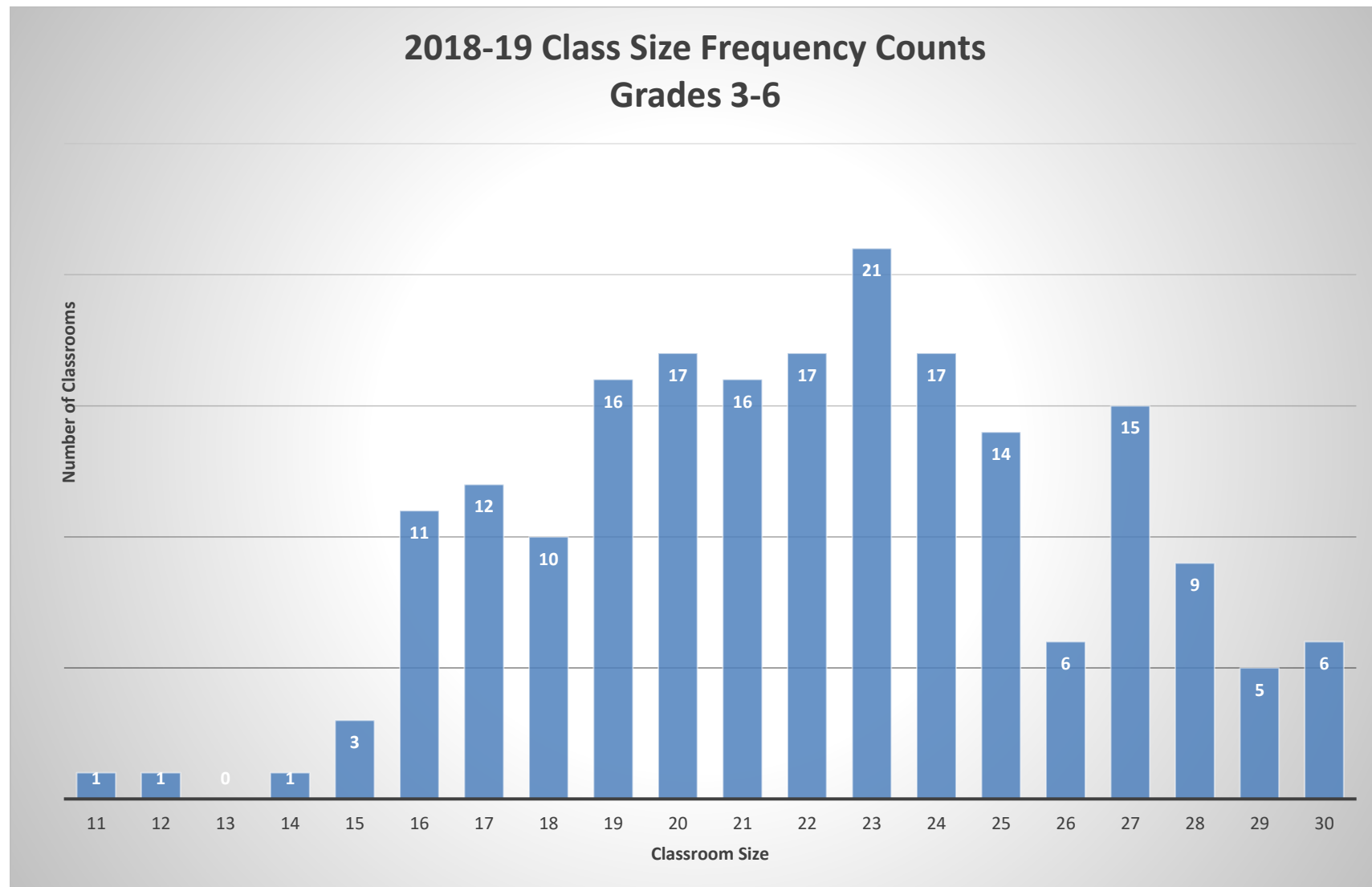
Figure 11. Grades K-2 class size frequency count.

Figure 12. Grades 3-6 class size frequency count.

SECONDARY CLASS SIZE

The following tables and figures present information on class sizes for each junior high and high school. “Goal posts” for class size are 22-30 for junior high and 24-32 for high school. These are represented by gray-shaded areas in each figure. Reasons for the classes being above the “aspirational” size are provided below. Questions about any information provided for a particular school should be directed to the applicable principal.

Potential Reasons for classes over aspirational size:

Single section course thus enrollment above goalpost.

Section sizes vary due to scheduling.

Late enrollments caused higher than desired class sizes.

Average size for performance music class or physical education class.

Table 31. High School Class Size

At City High, class sizes average of 27.4 students per class. At Liberty High, class sizes average of 24.9 students per class. At West High, class sizes average of 27.6 students per class. At Tate High, class sizes average 12 students per class.

	City HS			Liberty HS			West HS			Tate HS		
	SES	ELL	SpEd	SES	ELL	SpEd	SES	ELL	SpEd	SES	ELL	SpEd
1st Trimester	Students - Fall 2018	Sections - Fall 2018	Students/Class	Students - Fall 2018	Sections - Fall 2018	Students/Class	Students - Fall 2018	Sections - Fall 2018	Students/Class	Students - Fall 2018	Sections - Fall 2018	Students/Class
English	1680	68	24.7	944	38	24.8	1543	59	26.2	177	14	12.6
Math	1527	54	28.3	909	38	23.9	1436	53	27.1	121	12	10.1
Science	1608	57	28.2	967	39	24.8	1548	59	26.2	106	6	17.7
Social Studies	1370	49	28.0	901	35	25.7	1419	50	28.4	131	11	11.9
World Language	918	37	24.8	697	29	24.0	948	34	27.9	0	0	0.0
Career and Technology Education	432	18	24.0	299	15	19.9	440	21	21.0	22	3	7.3
Art	267	10	26.7	150	7	21.4	177	7	25.3	50	4	12.5
Music	467	9	51.9	275	6	45.8	565	10	56.5	0	0	0.0
Physical Education/Health	443	16	27.7	326	13	25.1	440	15	29.3	17	2	8.5
	8712	318	27.4	5468	220	24.9	8516	308	27.6	624	52	12.0

FIGURE 13. CITY HS CLASS SIZES.

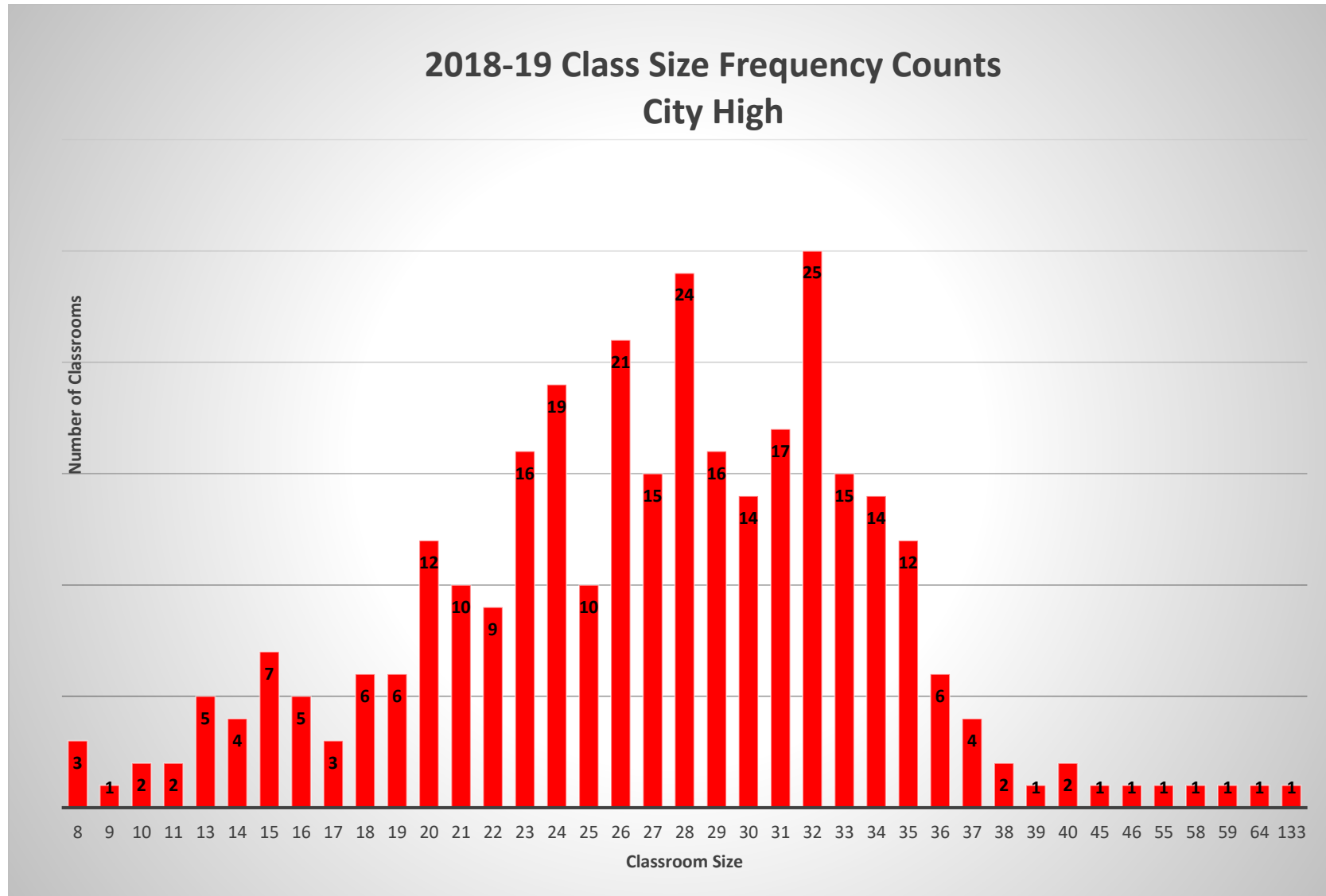


FIGURE 14. LIBERTY HS CLASS SIZES.

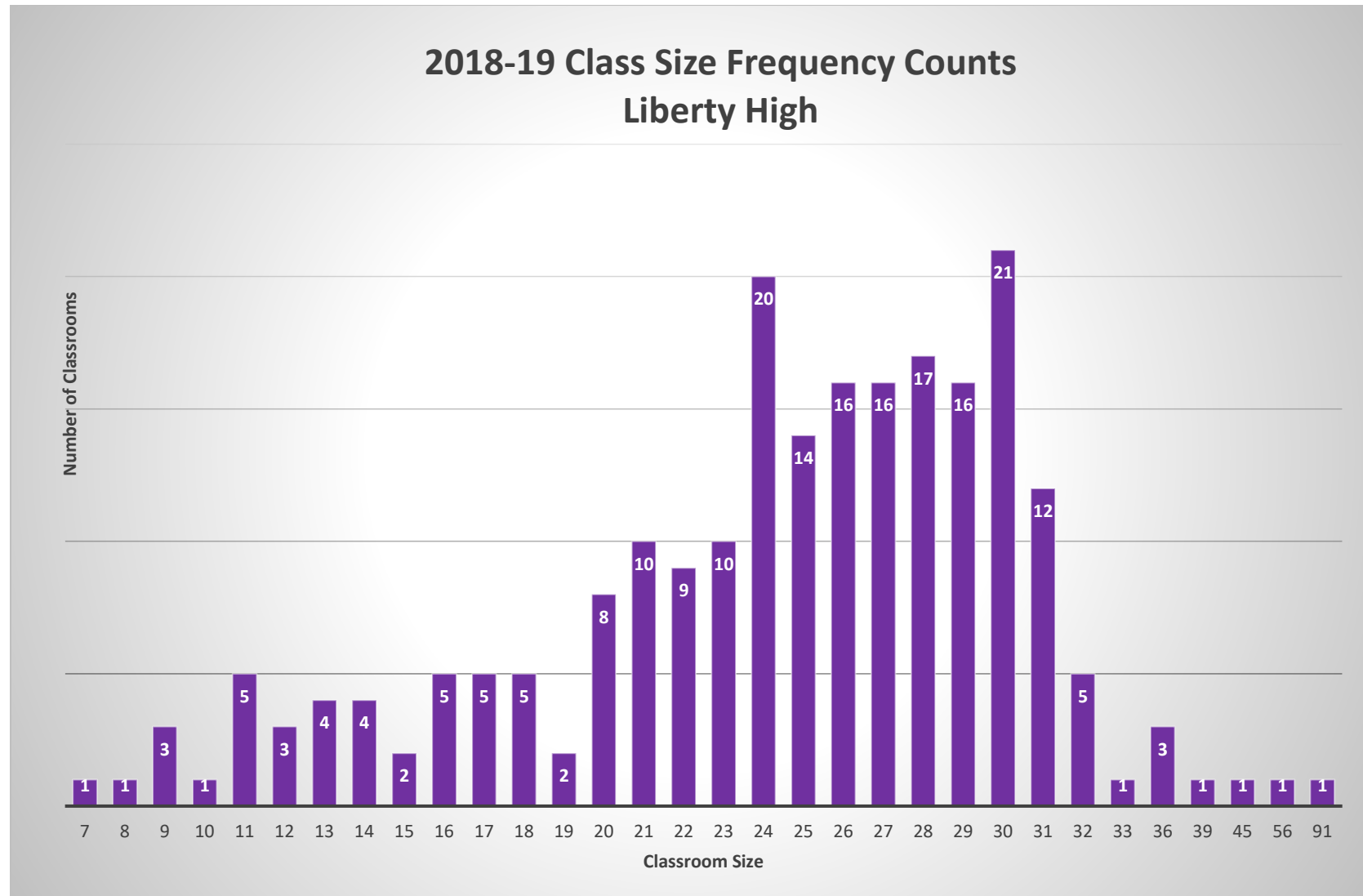


FIGURE 15. WEST HS CLASS SIZES.

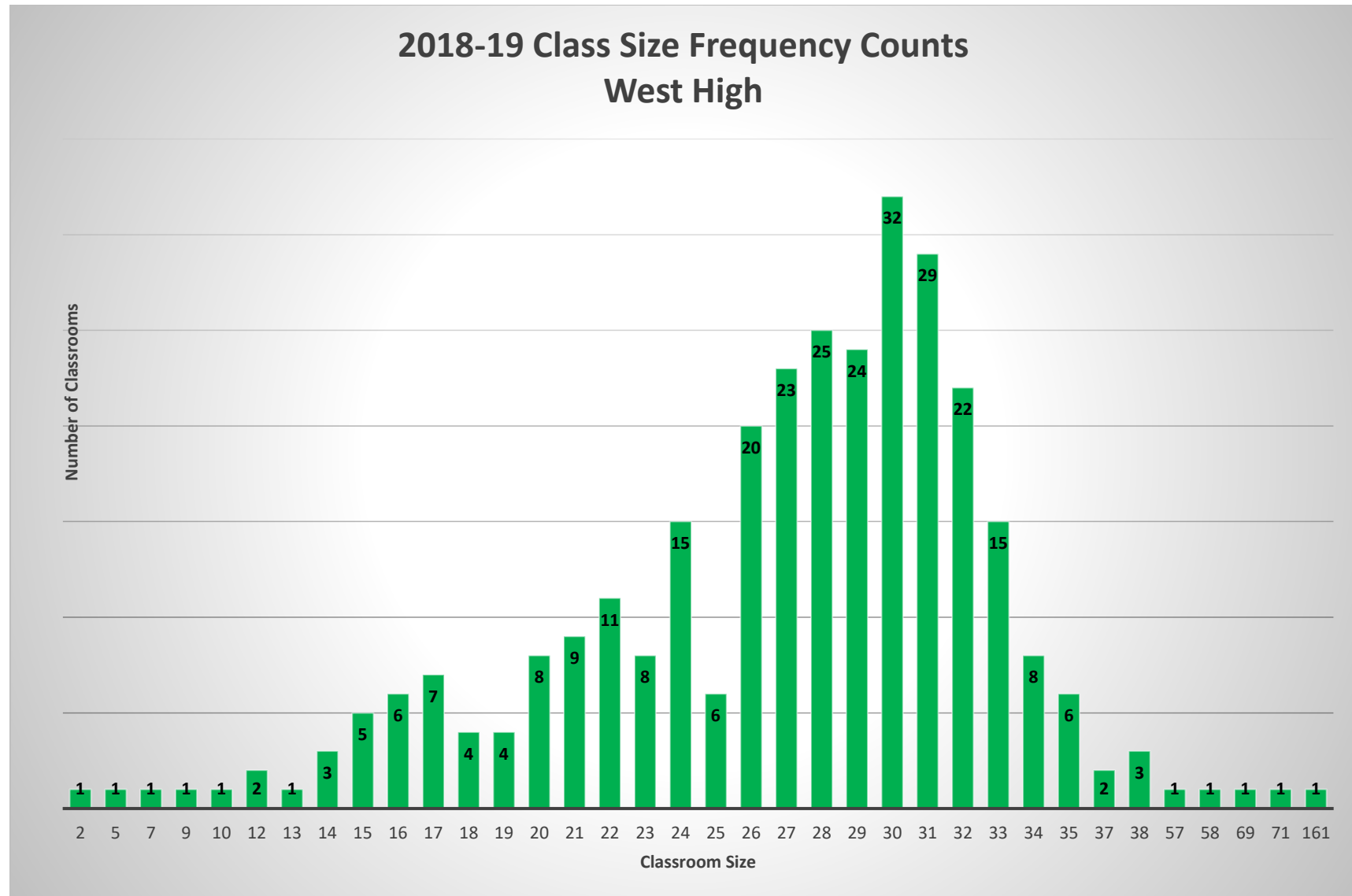


FIGURE 16. TATE HS CLASS SIZES.

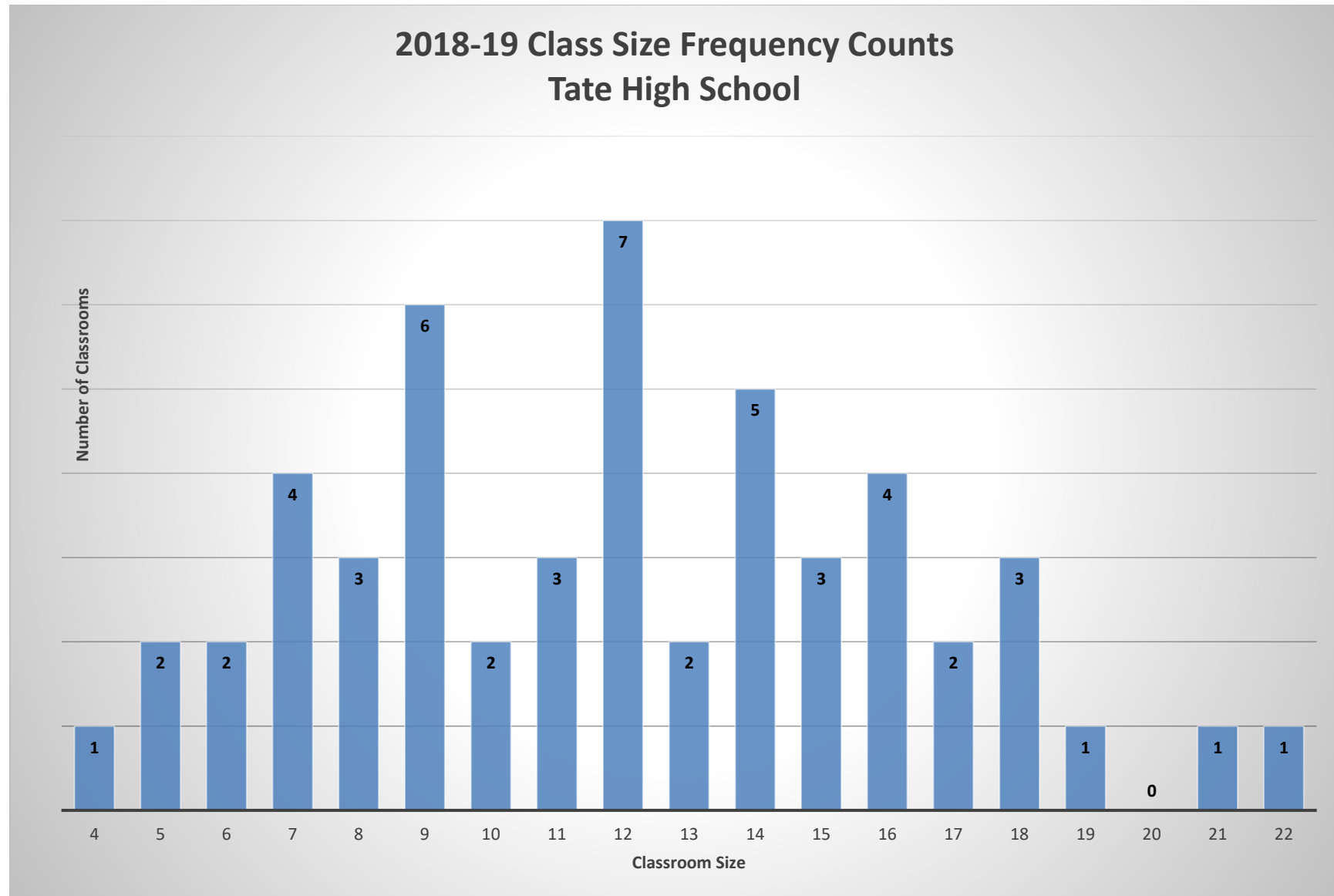


TABLE 32. PSEO 2018-19 COURSE INFORMATION

Course Name	Number of Students City High	Number of Students Liberty High	Number of Students West High	Total ICCSD Students
Topics in African American Studies	1			1
Modern Standard Arabic II	1			1
Beginning Chinese I		6		
Beginning Chinese II	3		9	12
Beginning Chinese IV			6	6
First Year Chinese - First Semester		1		
Second Year Chinese - Second Semester	2			2
Greek Civilization			1	1
Discrete Structures			4	4
Computer Science II: Data Structures			2	2
Digital Arts: An Introduction			1	1
Programming Languages and Tools			1	1
Intro to Networks and their Applications			1	1
Topics in Computer Science I Interactive Multimedia Programming			1	1
Topics in Computer Science I			1	1
Database Systems			1	1
Intermediate Economics			1	1
Oral Expression in French II	2		1	3
Intro to Global Health	1		1	2
Diversity in History		1		
Modern Japan			1	1
Intro to International Studies	1			1
Principles of Strategic Communication			1	1
Fourth Year Japanese II			1	1
Third Year Korean: Second Semester			1	1

Engineer Math II: Multivariable Calculus			1	1
Calculus III	1			1
Engineer Math IV: Differential Equations			1	1
Intro to Linear Algebra	1			1
Calculus III	3		9	12
Introduction to Abstract Algebra I			2	2
Fundamental Properties of Space and Functions			1	1
Foundations of Analysis	1			1
Intro to Philosophy			1	1
Physics I			1	1
Physics II			2	2
Comparative Politics	1			1
Middle East: Policy and Diplomacy	1			1
First Year Russian II			1	1
Spanish Language Skills: Speaking			1	1
Spanish in the US			1	1
Introduction to Reading Literature			1	1
Health for Living			1	1
Intro to Mathematical Statistics II			1	1
Totals	19	8	59	78

TABLE 33. KIRKWOOD REGIONAL CENTER ACADEMIES 2018-19

Academy	Number of Students at City High	Number of Students at Liberty High	Number of Students at West High	Number of Students at Tate	Total ICCSD Students
Advanced Manufacturing/Engineering Technology Academy	0	1	3	1	5
Architecture, Construction & Engineering (ACE) Academy	2	1	7	1	11
Arts & Sciences Academy A	18	8	77	0	103
Arts & Sciences Academy B	4	3	9	0	16
Arts & Sciences Academy C	2	5	2	0	9
Arts & Sciences Academy D	2	2	4	0	8
Arts & Sciences Academy E	1	3	5	0	9
Computer Programming and Web Development	4	6	8	0	18
Emergency Medical Technology	1	2	6	1	10
Energy, Electrical, Automation	1	1	0	0	2
Networking and Computer Support	1	1	0	0	2
Patient Care	11	6	21	0	38
Pharmacy Technician	2	0	3	0	5
Pre-Business Administration	3	3	5	0	11
Pre-Criminal Justice	9	4	8	1	22
Pre-Education	5	4	5	0	14
Pre-Professional/Health Careers	4	0	10	0	14
Pre-Social Work	3	3	6	0	12
Transportation Auto Tech	3	2	1	0	6
Transportation Collision	3	1	1	0	5
Visual Design	2	2	4	0	8
Totals	81	58	185	4	328

TABLE 34. JUNIOR HIGH CLASS SIZE AVERAGES

At North Central JH, class sizes average of 29.4 students per class. At Northwest JH, class sizes average of 26.4 students per class. At South East JH, class sizes average of 29.4 students per class.

1st Trimester	North Central JHS			Northwest JHS			South East JHS		
	SES	23.9%		SES	44.6%		SES	42.8%	
	ELL	1.8%		ELL	8.0%		ELL	5.5%	
	SpEd	10.0%		SpEd	10.6%		SpEd	13.8%	
	Students - Fall 2018	Sections - Fall 2018	Students/ Class	Students - Fall 2018	Sections - Fall 2018	Students/ Class	Students - Fall 2018	Sections - Fall 2018	Students/ Class
English	831	29	28.7	1022	42	24.3	1115	40	27.9
Math	542	19	28.5	684	24	28.5	757	29	26.1
Science	580	20	29.0	746	29	25.7	777	29	26.8
Social Studies	549	20	27.5	657	26	25.3	744	26	28.6
World Language	217	8	27.1	231	8	28.9	280	9	31.1
Career and Technology Education	313	13	24.1	391	16	24.4	449	20	22.5
Art	93	4	23.3	148	6	24.7	169	6	28.2
Music	459	11	41.7	269	9	29.9	529	9	58.8
Physical Education/Health	735	23	32.0	921	32	28.8	1029	31	33.2
	4319	147	29.4	5069	192	26.4	5849	199	29.4

Figure 17. North Central JH class sizes.

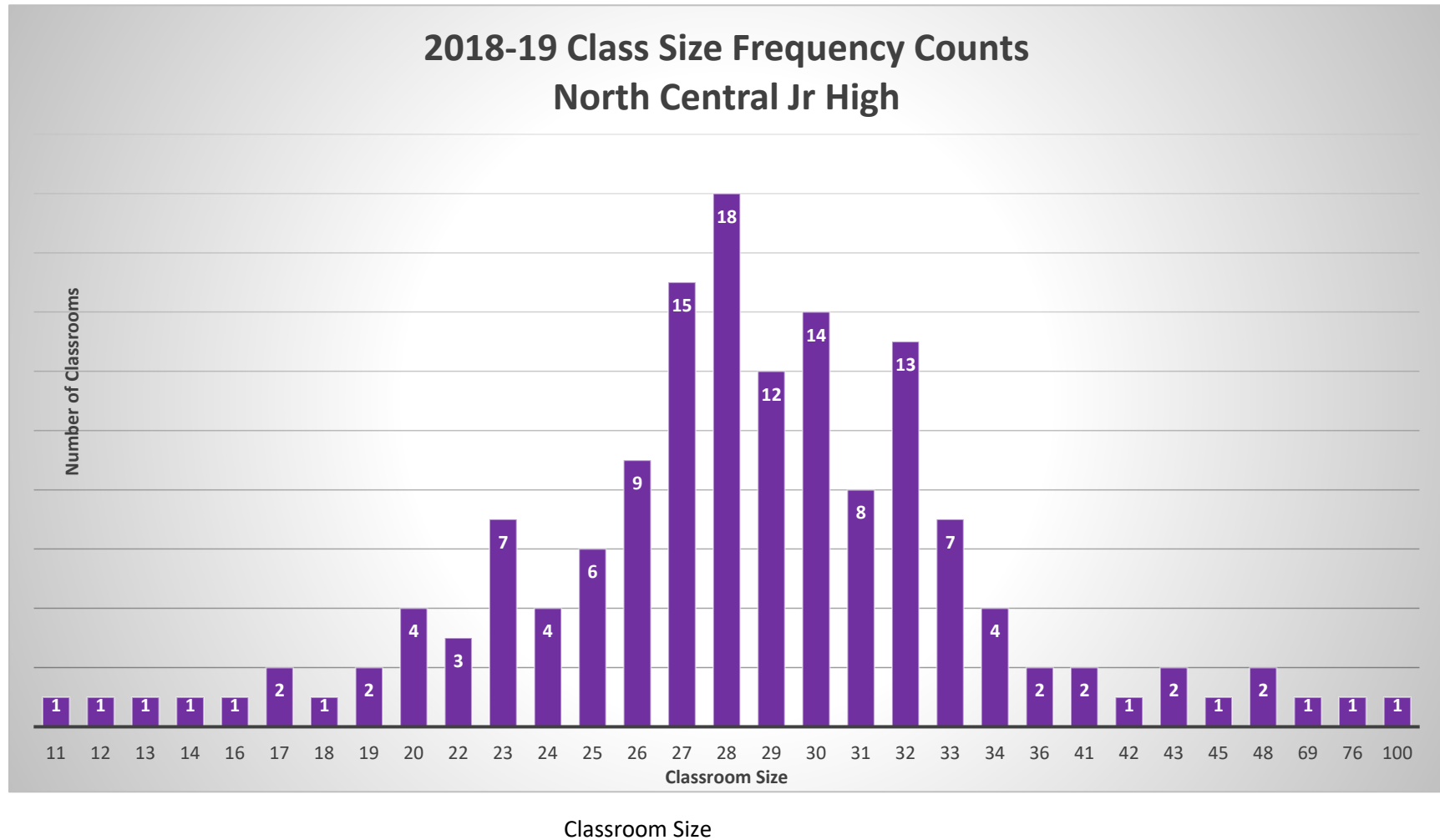


FIGURE 18. NORTHWEST JH CLASS SIZES.

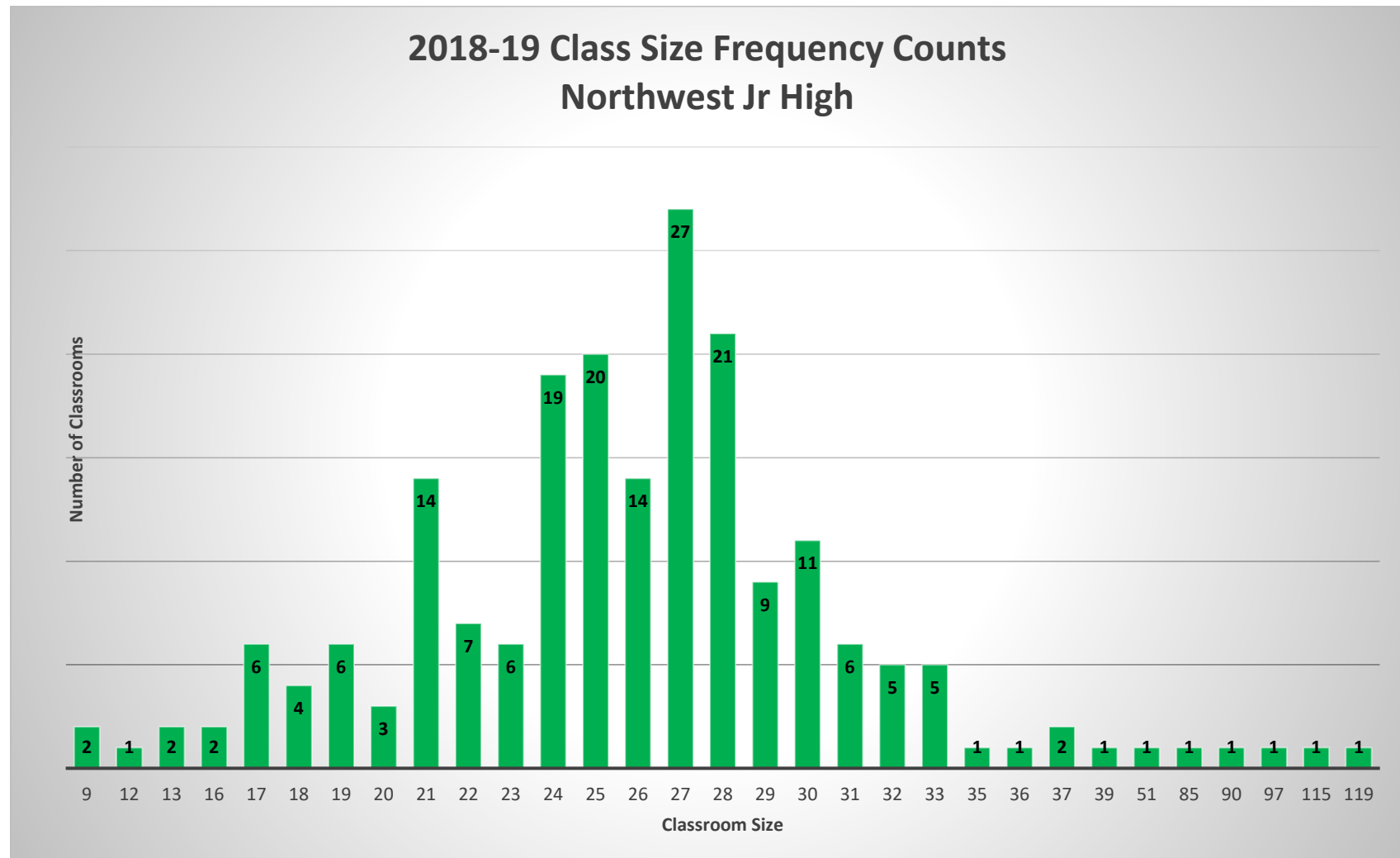
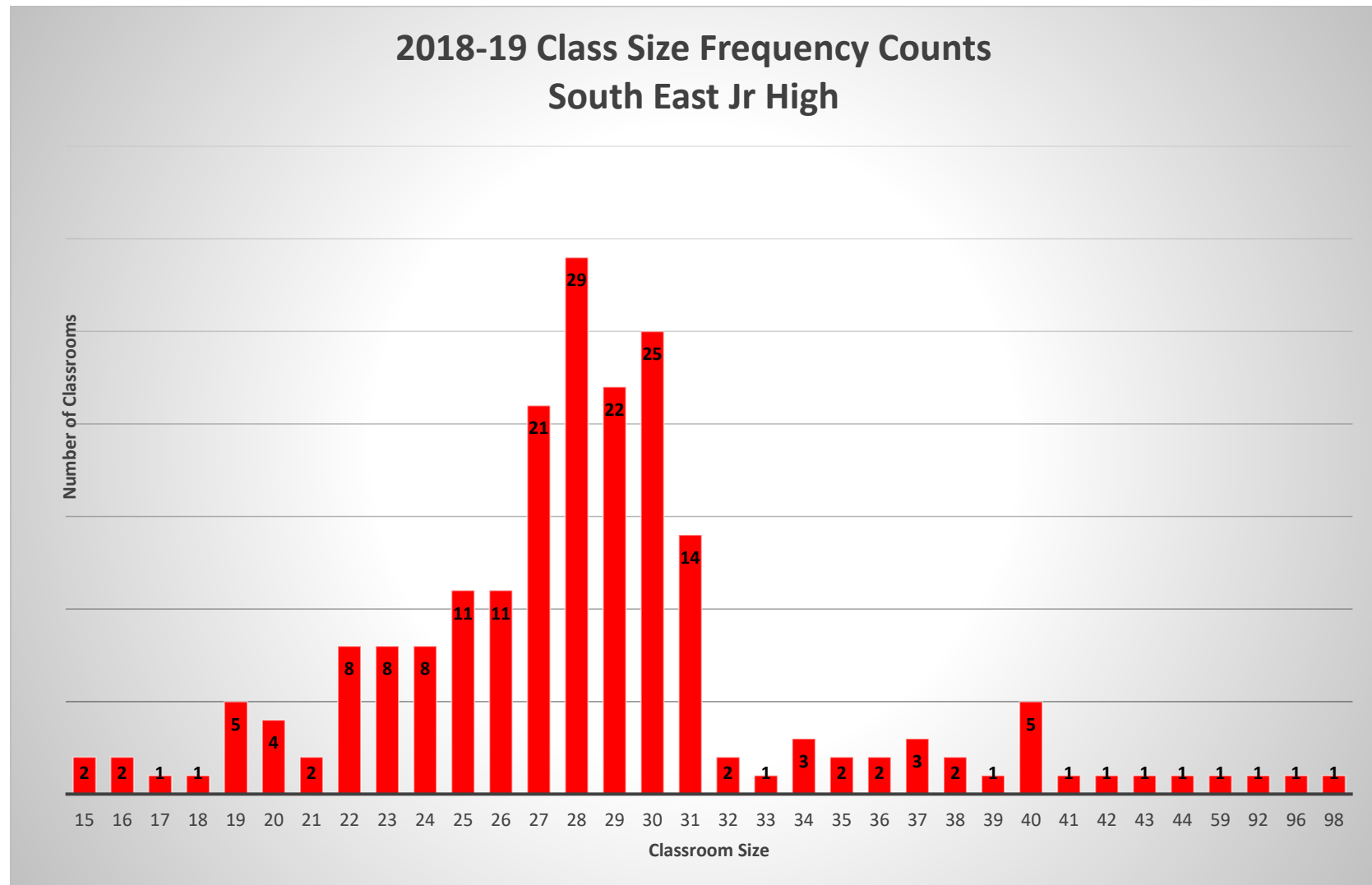


FIGURE 19. SOUTH EAST JH CLASS SIZES.



APPENDIX 1 – HEADCOUNT VERSUS CERTIFIED ENROLLMENT

As mentioned earlier in this report, there are several different ways to calculate enrollment, depending on the purpose of the information. Table 35 shows the actual data reported to the Department of Education from the October 2, 2018 “official count day.” The highlighted cells indicate the components used to calculate headcount, certified enrollment, and students provided instruction.

Table 35. Official enrollment counts submitted to Department of Education and associated calculations.

	Count	Weight	Weighted Count	Weighted Count
Resident public students for whom your district provides all, or a major portion of, the instructional program within your district.				
Full-time K-12	13817	1.000	13817.00	13817.00
Pre-K Special Education	46	1.000	46.00	46.00
Dual Enrolled K-8 or 9-12 Enrolled for Activity Program	47	0.100	4.70	4.70
Home School Assistance K-12	16	0.300	4.80	4.80
Dual Enrolled and Home School Assistance K-8 or 9-12 Enrolled for Activity Program	28	0.400	11.20	11.20
	Count	Weight	Weighted Count	Weighted Count
Open Enrolled Out				
Full time K-12	337	1.000	337.00	337.00
Dual Enrolled K-8 or 9-12 Enrolled for Activity Program	1	0.100	0.10	0.10
Home School Assistance K-12	1	0.300	0.30	0.30
Dual Enrolled and Home School Assistance K-8 or 9-12 Enrolled for Activity Program	112	0.400	44.80	44.80
Tuitioned Out				
Full time K-12	12	1.000	12.00	12.00
Dual Enrolled K-8 or 9-12 Enrolled for Activity Program	0	0.100	0.00	0.00
Home School Assistance K-12	0	0.300	0.00	0.00

Dual Enrolled and Home School Assistance K-8 or 9-12 Enrolled for Activity Program	0	0.400	0.00	0.00
---	---	-------	------	------

Whole Grade Sharing Out

Full time K-12	0	1.000	0.00	0.00
Dual Enrolled K-8 or 9-12 Enrolled for Activity Program	0	0.100	0.00	0.00
Home School Assistance K-12	0	0.300	0.00	0.00
Dual Enrolled and Home School Assistance K-8 or 9-12 Enrolled for Activity Program	0	0.400	0.00	0.00

	Count	Weight	Weighted Count	Weighted Count
Open Enrolled In				
Full time K-12	150	1.000	150.00	150.00
Dual Enrolled K-8 or 9-12 Enrolled for Activity Program	0	0.100	0.00	0.00
Home School Assistance K-12	6	0.300	1.80	1.80
Dual Enrolled and Home School Assistance K-8 or 9-12 Enrolled for Activity Program	7	0.400	2.80	2.80
Tuitioned In				
Full time K-12	19	1.000	19.00	19.00
Dual Enrolled K-8 or 9-12 Enrolled for Activity Program	0	0.100	0.00	0.00
Home School Assistance K-12	0	0.300	0.00	0.00
Dual Enrolled and Home School Assistance K-8 or 9-12 Enrolled for Activity Program	0	0.400	0.00	0.00
Whole Grade Sharing In				
Full time K-12	0	1.000	0.00	0.00
Dual Enrolled K-8 or 9-12 Enrolled for Activity Program	0	0.100	0.00	0.00
Home School Assistance K-12	0	0.300	0.00	0.00
Dual Enrolled and Home School Assistance K-8 or 9-12 Enrolled for Activity Program	0	0.400	0.00	0.00

	Count	Weight	Weighted Count	Weighted Count
Non-Public Shared Time K-8	7	0.130	0.91	0.91
Non-Public Shared Time K-8	2	0.200	0.40	0.40
Non-Public Shared Time K-8	2	0.100	0.20	0.20
Non-Public Shared Time K-8	1	0.330	0.33	0.33
Non-Public Shared Time 9-12	2	0.700	1.40	1.40
Non-Public Shared Time 9-12	1	0.450	0.45	0.45
Non-Public Shared Time 9-12	1	0.150	0.15	0.15
Non-Public Shared Time 9-12	4	0.300	1.20	1.20
CPI Dual Enrolled/CPI Dual Enrolled and HSAP (9-12)				
Resident	14	0.000	0.00	0.00
Resident	0	0.100	0.00	0.00
Resident	1	0.200	0.20	0.20
Resident	6	0.300	1.80	1.80
Resident	0	0.500	0.00	0.00
Open Enrolled In	0	0.500	0.00	0.00
Tuitioned In	0		0.00	0.00
Whole Grade Sharing In	0		0.00	0.00
	Count	Weight	Weighted Count	Weighted Count
Non-Public Shared Time K-8	0		0.00	0.00
Non-Public Shared Time 9-12	1	0.040	0.04	0.04
CPI Dual Enrolled/CPI Dual Enrolled and HSAP (9-12)				
Resident	0	0.040	0.00	0.00
Open Enrolled In	0	0.040	0.00	0.00
Tuitioned In	0		0.00	0.00
Whole Grade Sharing In	0		0.00	0.00

	Count	Weight	Weighted Count	Weighted Count
Non-Public Shared Time K-8	0		0.00	0.00
Non-Public Shared Time 9-12	1	0.040	0.04	0.04
CPI Dual Enrolled/CPI Dual Enrolled and HSAP (9-12)				
Resident	1	0.040	0.04	0.04
Resident	0	0.200	0.00	0.00
Open Enrolled In	0		0.00	0.00
Tuitioned In	0		0.00	0.00
Whole Grade Sharing In	0		0.00	0.00
14090/14118			14285.06	14064.46
Head Count			Certified Enrollment	Students Provided Instruction

APPENDIX 2 – HOME LANGUAGES

Remaining Home Languages	Count
Afar	1
Abkazian	1
Afrikaans	3
Akkadian	1
Albanian	2
Amharic	12
Awadhi	1
Azerbaijani	1
Bambara	13
Bengali	10
Berber	1
Bantu	2
Bosnian	6
Bulgarian	1
Burmese	1
Central American Indian Languages	3
Chamorro	2
Creoles and pidgins, English based (Other)	3
Creoles and pidgins (Other)	2
Cushitic (Other)	2
Czech	1
Dutch, Middle	1
Dutch:Flemish	5
Dyula	2
Filipino;Pilipino	1
Fon	1
Georgian	4

German	5
German, Middle High (ca.1050-1500)	1
Greek, Modern	1
Guarani	1
Gujarati	16
Haitian; Haitian Creole	1
Hebrew	10
Icelandic	1
Indic (Other)	1
Indonesian	8
Indo-European (Other)	1
Italian	8
Kabyle	1
Kannadu	5
Central Khmer	5
Kinyarwanda	12
Lao	16
Lithuanian	2
Malayalam	7
Mandingo	3
Marathi	7
Mandar	2
Uncoded languages	1
Multiple languages	2
Napali	13
Oromo	13
Papuan (Other)	1
Panjabi	4
Palauan	2
Persian	5

Philippine (Other)	1
Polish	6
Quechua	2
Romanian	7
Sinhala; Sinhalese	1
Slavic (Other)	1
Slovak	2
Soninke	1
Somali	2
Serbian	1
Nilo-Saharan (Other)	1
Sundanese	7
Swedish	4
Tamil	20
Telugu	18
Tagalog	1
Thai	1
Tigrinya	2
Turkish	18
Twi	10
Ukrainian	1
Urdu	18