

IOWA CITY COMMUNITY SCHOOL DISTRICT



IOWA CITY
COMMUNITY
SCHOOL DISTRICT
2022-2023

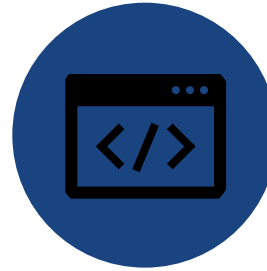
Data Sets

Historic Trends 1999-2023

Class Size Data 2022-23

Presented January 2023

Data statistics in this presentation will be found on the Iowa Department of Education website under the Education Statistics page and the Certified Enrollment page.



<https://educateiowa.gov/data-reporting/education-statistics-pk-12>



https://educateiowa.gov/data-reporting/education-statistics-pk-12#Student_Enrollment

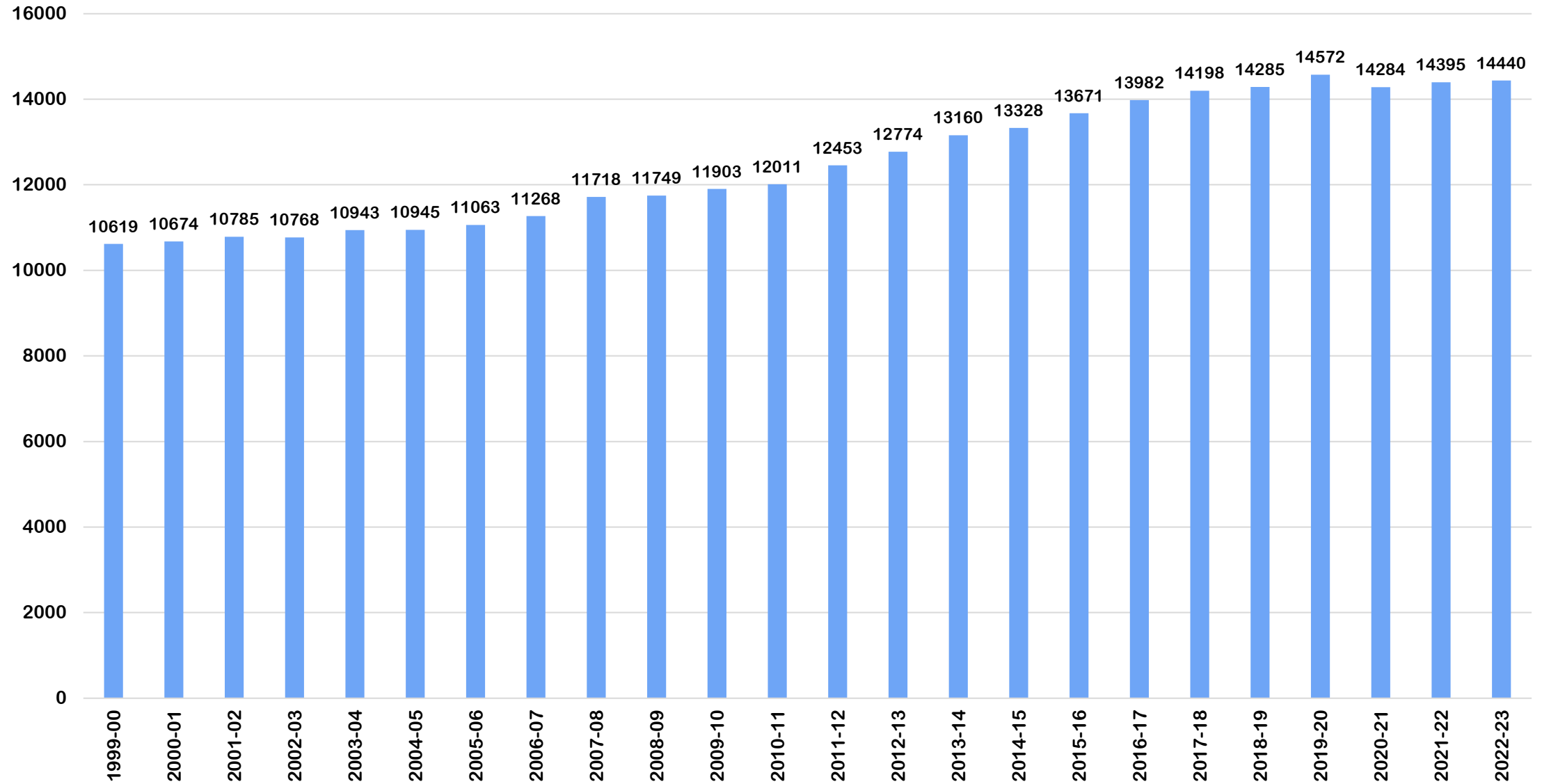


Special Education Data: Certified enrollment data provided to Iowa Department of Education on December 9, 2022. Data not published at time of reporting. Adjusted count forthcoming from Department of Education.



Education Statistics and Certified Enrollment reports were unavailable prior to reporting and may be adjusted by the Iowa Department of Education upon publication.

DISTRICT CERTIFIED ENROLLMENT – TOTAL K-12



DISTRICT ENROLLMENT CHANGE

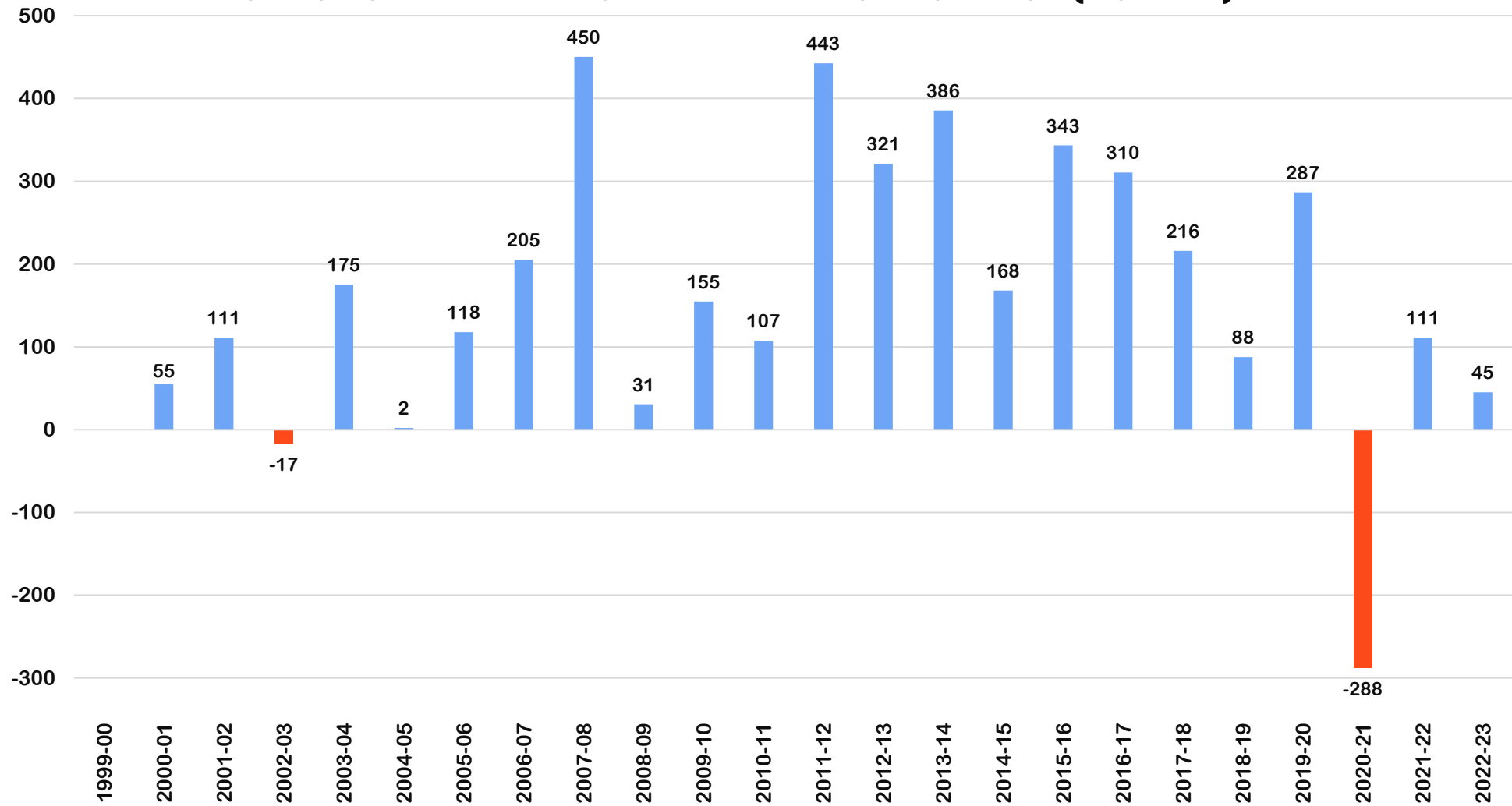
24-year
1999-00 to
2022-23
+3821

10-year
2013-14 to
2022-23
+1280

5-year
2018-19 to
2022-23
+155



DISTRICT CERTIFIED ENROLLMENT - ANNUAL CHANGE (NUMBER) K-12



Enrollment as Reported to the Iowa Department of Education

	10/15/2020		10/15/2021		10/14/2022			
	Count	Weight	Weighted Count	Count	Weight	Weighted Count	Change in Count	Change in Weighting
Residents								
Resident public students for whom your district provides all, or a major portion of, the instructional program within your district.								
Full-time K-12	13,962	1.000	13,962.00	13,963	1.000	13,963.00	1.00	1.00
Pre-K Special Education	55	1.000	55.00	77	1.000	77.00	22.00	22.00
Dual Enrolled K-8 or 9-12 Enrolled for Activity Program	24	0.100	2.40	18	0.100	1.80	(6.00)	(0.60)
Home School Assistance K-12	69	0.300	20.70	54	0.300	16.20	(15.00)	(4.50)
Dual Enrolled and Home School Assistance K-8 or 9-12 Enrolled for Activity Program	68	0.400	27.20	49	0.400	19.60	(19.00)	(7.60)
							-	-
Students Leaving								
Open Enrolled Out								
Full-time K-12	271	1.000	271.00	281	1.000	281.00	10.00	10.00
Dual Enrolled K-8 or 9-12 Enrolled for Activity Program	2	0.100	0.20	3	0.100	0.30	1.00	0.10
Home School Assistance K-12	10	0.300	3.00	10	0.300	3.00	-	-
Dual Enrolled and Home School Assistance K-8 or 9-12 Enrolled for Activity Program	99	0.400	39.60	122	0.400	48.80	23.00	9.20
Tuitioned Out								
Full-time K-12	8	1.000	8.00	11	1.000	11.00	3.00	3.00
Dual Enrolled K-8 or 9-12 Enrolled for Activity Program	-	0.100	-	-	0.100	-	-	-
Home School Assistance K-12	-	0.300	-	-	0.300	-	-	-
Dual Enrolled and Home School Assistance K-8 or 9-12 Enrolled for Activity Program	-	0.400	-	-	0.400	-	-	-
Whole Grade Sharing Out								
Full-time K-12	-	1.000	-	-	1.000	-	-	-
Dual Enrolled K-8 or 9-12 Enrolled for Activity Program	-	0.100	-	-	0.100	-	-	-
Home School Assistance K-12	-	0.300	-	-	0.300	-	-	-
Dual Enrolled and Home School Assistance K-8 or 9-12 Enrolled for Activity Program	-	0.400	-	-	0.400	-	-	-
Charter School	-	1.000	-	1	1.000	1.00	1.00	1.00
Students Entering								
Open Enrolled In								
Full-time K-12	268	1.000	268.00	284	1.000	284.00	16.00	16.00
Dual Enrolled K-8 or 9-12 Enrolled for Activity Program	1	0.100	0.10	1	0.100	0.10	-	-

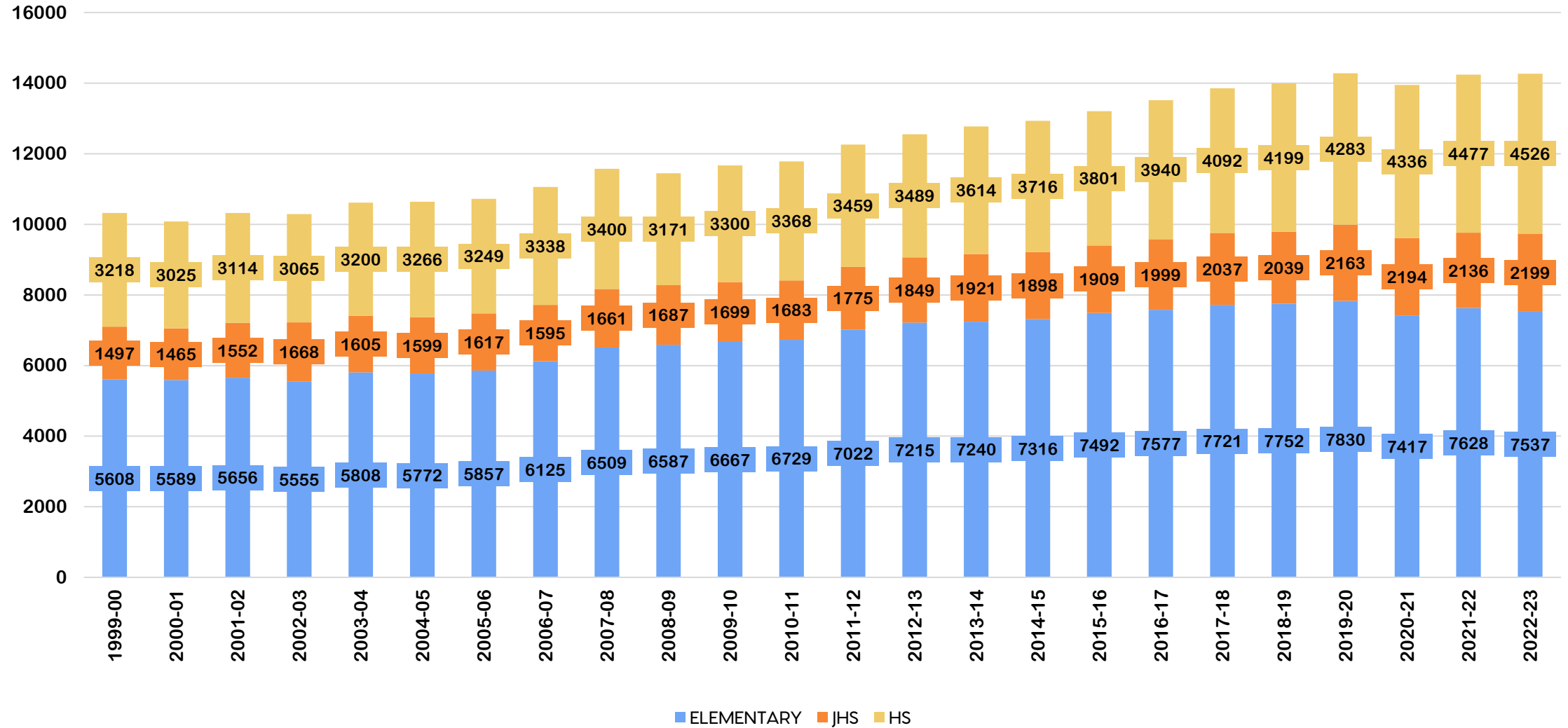
Enrollment as Reported to the Iowa Department of Education

Home School Assistance K-12	10	0.300	3.00	5	0.300	1.50	(5.00)	(1.50)
Dual Enrolled and Home School Assistance K-8 or 9-12 Enrolled for Activity Program	7	0.400	2.80	10	0.400	4.00	3.00	1.20
Tuitioned In							-	-
Full-time K-12	12	1.000	12.00	14	1.000	14.00	2.00	2.00
Dual Enrolled K-8 or 9-12 Enrolled for Activity Program	-	0.100	-	-	0.100	-	-	-
Home School Assistance K-12	-	0.300	-	-	0.300	-	-	-
Dual Enrolled and Home School Assistance K-8 or 9-12 Enrolled for Activity Program	-	0.400	-	-	0.400	-	-	-
							-	-
Whole Grade Sharing In							-	-
Full-time K-12	-	1.000	-	-	1.000	-	-	-
Dual Enrolled K-8 or 9-12 Enrolled for Activity Program	-	0.100	-	-	0.100	-	-	-
Home School Assistance K-12	-	0.300	-	-	0.300	-	-	-
Dual Enrolled and Home School Assistance K-8 or 9-12 Enrolled for Activity Program	-	0.400	-	-	0.400	-	-	-
							-	-
District Courses	Count	Weight	Weighted Count	Count	Weight	Weighted Count	Change in Count	Change in Count
Non-Public Shared Time K-8	0.50	0.100	0.05	48.00	0.100	4.80	47.50	4.75
Non-Public Shared Time K-8	-	0.130	-	-	0.130	-	-	-
Non-Public Shared Time K-8	-	0.100	-	-	0.200	-	-	-
Non-Public Shared Time K-8	-	0.330	-	-	0.330	-	-	-
Non-Public Shared Time 9-12	-	0.300	-	-	0.300	-	-	-
Non-Public Shared Time 9-12	-	0.700	-	-	0.700	-	-	-
Non-Public Shared Time 9-12	4.30	0.100	0.43	46.40	0.100	4.64	42.10	4.21
Non-Public Shared Time 9-12	-	0.450	-	-	0.450	-	-	-
CPI Dual Enrolled/CPI Dual Enrolled and HSAP (9-12)							-	-
Resident	-	0.140	-	-	0.140	-	-	-
Resident	-	0.100	-	1.00	0.100	0.10	1.00	0.10
Resident	-	0.200	-	-	0.200	-	-	-
Resident	4.90	0.300	1.47	23.67	0.300	7.10	18.77	5.63
Resident	8.00	0.450	3.60	-	0.450	-	(8.00)	(3.60)
Open Enrolled in	-	0.500	-	0.60	0.500	0.30	0.60	0.30
Tuitioned In	-		-	-		-	-	-
Whole Grade Sharing In	-		-	-		-	-	-
							-	-
PSEO Courses (Spring)	Count	Weight	Weighted Count	Count	Weight	Weighted Count	Change in Count	Change in Count

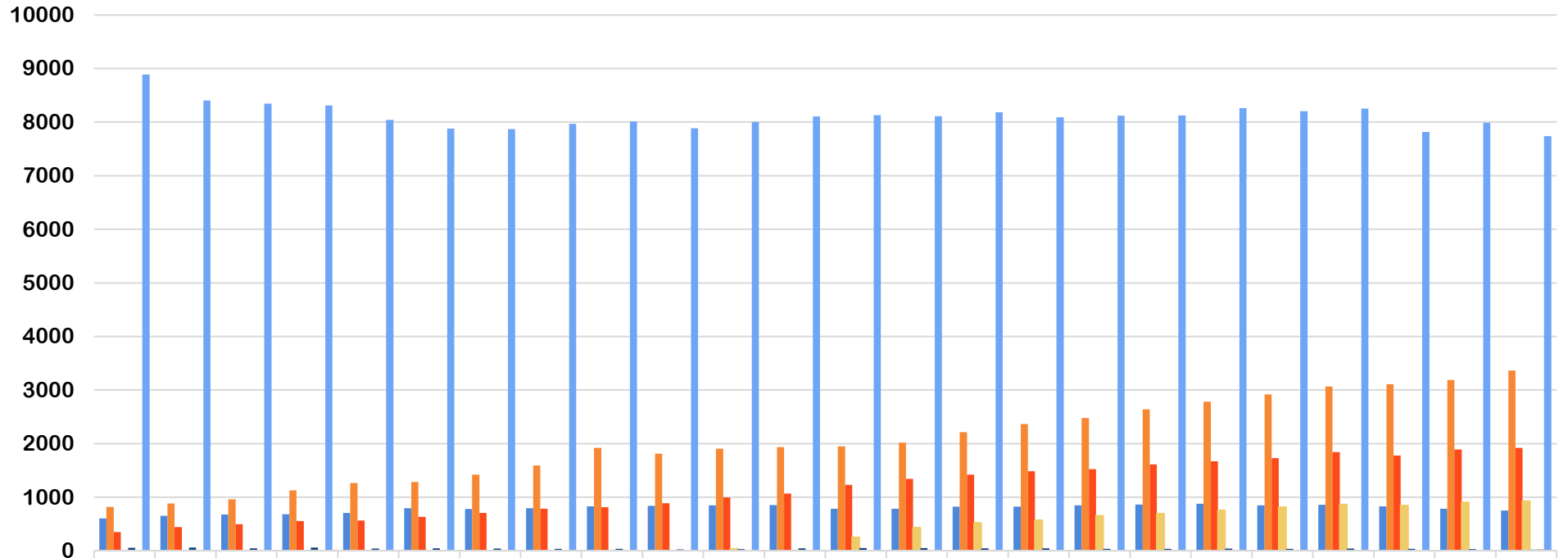
Enrollment as Reported to the Iowa Department of Education

Non-Public Shared Time K-8	-	-	-	-	-	-	-	-
Non-Public Shared Time 9-12	-	0.040	-	-	0.040	-	-	-
CPI Dual Enrolled/CPI Dual Enrolled and HSAP (9-12)								
Resident	-	0.040	-	-	0.040	-	-	-
Open Enrolled in	-	-	-	-	-	-	-	-
Tuitioned In	-	-	-	-	-	-	-	-
Whole Grade Sharing In	-	-	-	-	-	-	-	-
PSEO Courses (Fall)			Weighted			Weighted	Change in	Change in
	Count	Weight	Count	Count	Weight	Count	Count	Count
Non-Public Shared Time K-8	1	0.030	0.03	3.00	0.030	0.09	2.00	0.06
Non-Public Shared Time 9-12	6	0.040	0.24	2.00	0.040	0.08	(4.00)	(0.16)
CPI Dual Enrolled/CPI Dual Enrolled and HSAP (9-12)								
Resident	-	0.040	-	1.00	0.030	0.03	1.00	0.03
Open Enrolled in	-	-	-	-	-	-	-	-
Tuitioned In	-	-	-	-	-	-	-	-
Whole Grade Sharing In	-	-	-	-	-	-	-	-
TOTAL of corresponding shaded cells	14,421		14,394.92	14,398		14,439.84	(23.00)	44.92
	Head Count		Certified Enrollment	Head Count		Certified Enrollment	Change in Count	Change in Enrollment

DISTRICT HEADCOUNT ENROLLMENT BY GRADE LEVEL (NUMBER) K-12



DISTRICT ENROLLMENT RACE AND ETHNICITY HEADCOUNT (NUMBER) PK-12



	1999-00	2000-01	2001-02	2002-03	2003-04	2004-05	2005-06	2006-07	2007-08	2008-09	2009-10	2010-11	2011-12	2012-13	2013-14	2014-15	2015-16	2016-17	2017-18	2018-19	2019-20	2020-21	2021-22	2022-23
Asian	604	655	678	683	707	794	782	795	829	840	847	853	785	784	822	824	848	863	877	848	860	829	786	748
Black	820	883	963	1129	1263	1284	1423	1593	1921	1814	1906	1933	1951	2019	2214	2367	2477	2638	2782	2917	3064	3111	3185	3363
Hispanic	348	444	498	556	566	631	705	784	814	885	994	1068	1232	1344	1423	1486	1523	1614	1671	1728	1842	1779	1891	1922
Multi-Racial											34	9	251	430	520	570	652	692	754	813	862	845	903	925
Native American/ Alaskan	56	61	47	62	43	48	42	38	38	26	32	44	52	53	45	44	38	38	43	35	42	34	29	23
Pacific Islander/ Other												5	7	9	9	14	9	18	18	16	16	12	17	28
White	8889	8403	8345	8310	8041	7880	7870	7970	8013	7884	8002	8103	8127	8112	8182	8092	8119	8123	8260	8203	8253	7818	7988	7736



DISTRICT HEADCOUNT ENROLLMENT CHANGE

GRADES PK-12

RACE AND ETHNICITY

Asian

1999-00 – 2022-23 = +144

2013-14 – 2022-23 = -74

2018-19 – 2021-22 = -100

Black

1999-00 – 2022-23 = +2543

2013-14 – 2022-23 = +1149

2018-19 – 2022-23 = +446

Hispanic

1999-00 – 2022-23 = +1574

2013-14 – 2022-23 = +499

2018-19 – 2022-23 = +194

Multi-Racial

2009-10 – 2022-23 = +925

2013-14 – 2022-23 = +405

2018-19 – 2022-23 = +112

Native American/Alaskan

1999-00 – 2022-23 = -33

2013-14 – 2022-23 = -22

2018-19 – 2022-23 = -12

Pacific Islander/Other

2010-11 – 2022-23 = +28

2013-14 – 2022-23 = +19

2018-19 – 2022-23 = +12

White

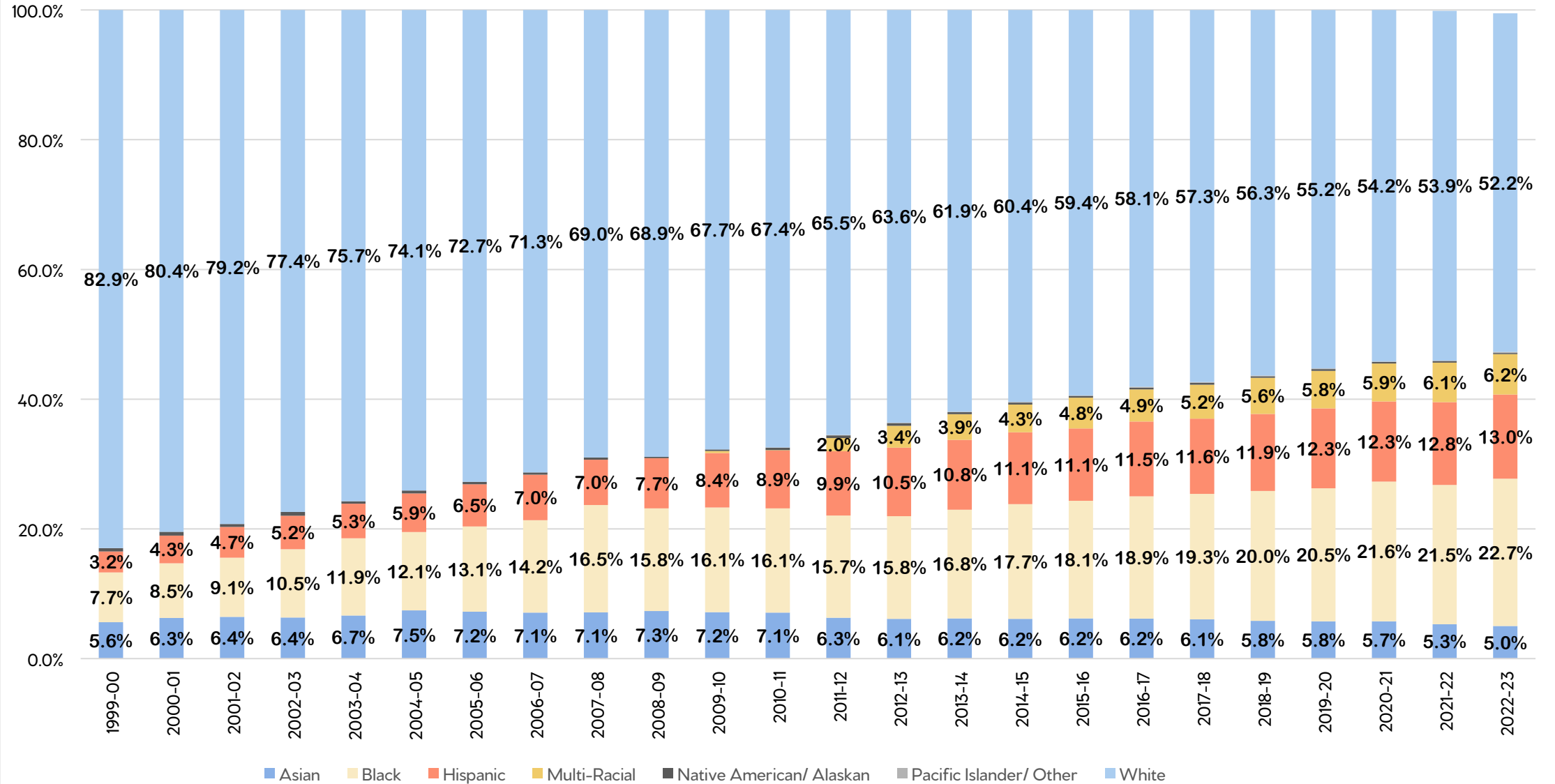
1999-00 – 2022-23 = -1153

2013-14 – 2022-23 = -446

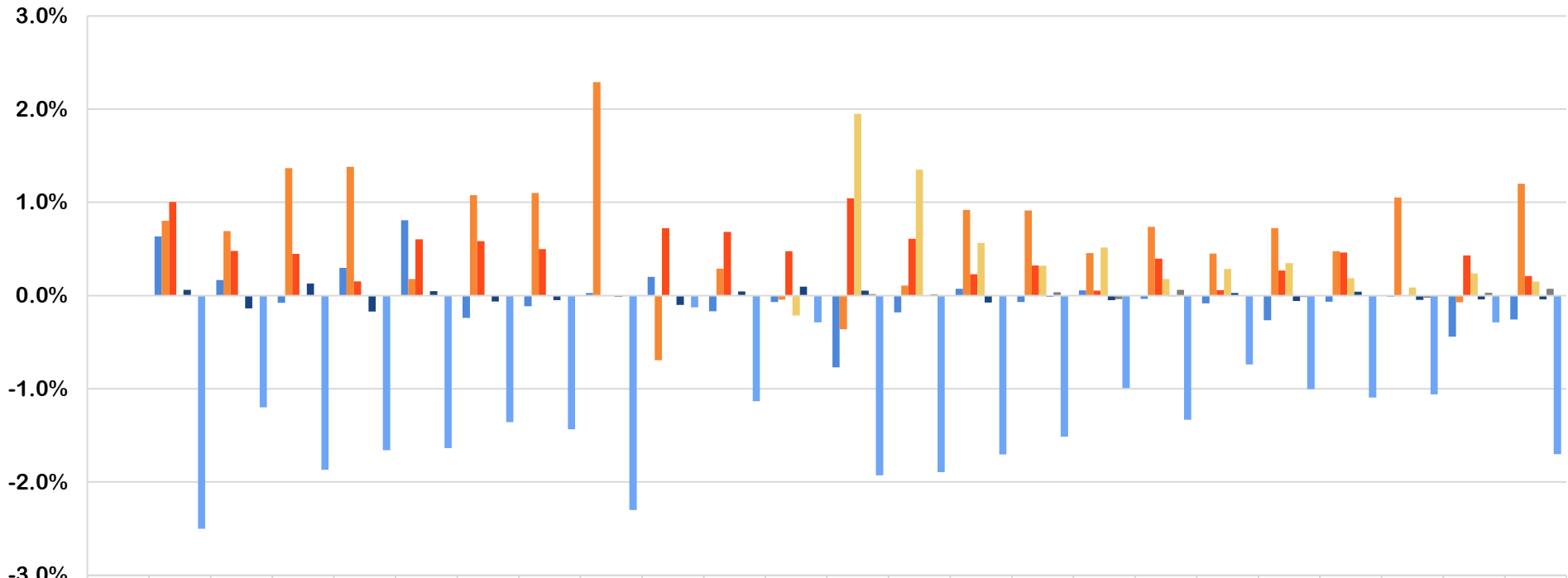
2018-19 – 2022-23 = -467



DISTRICT ENROLLMENT - RACE AND ETHNICITY PK-12

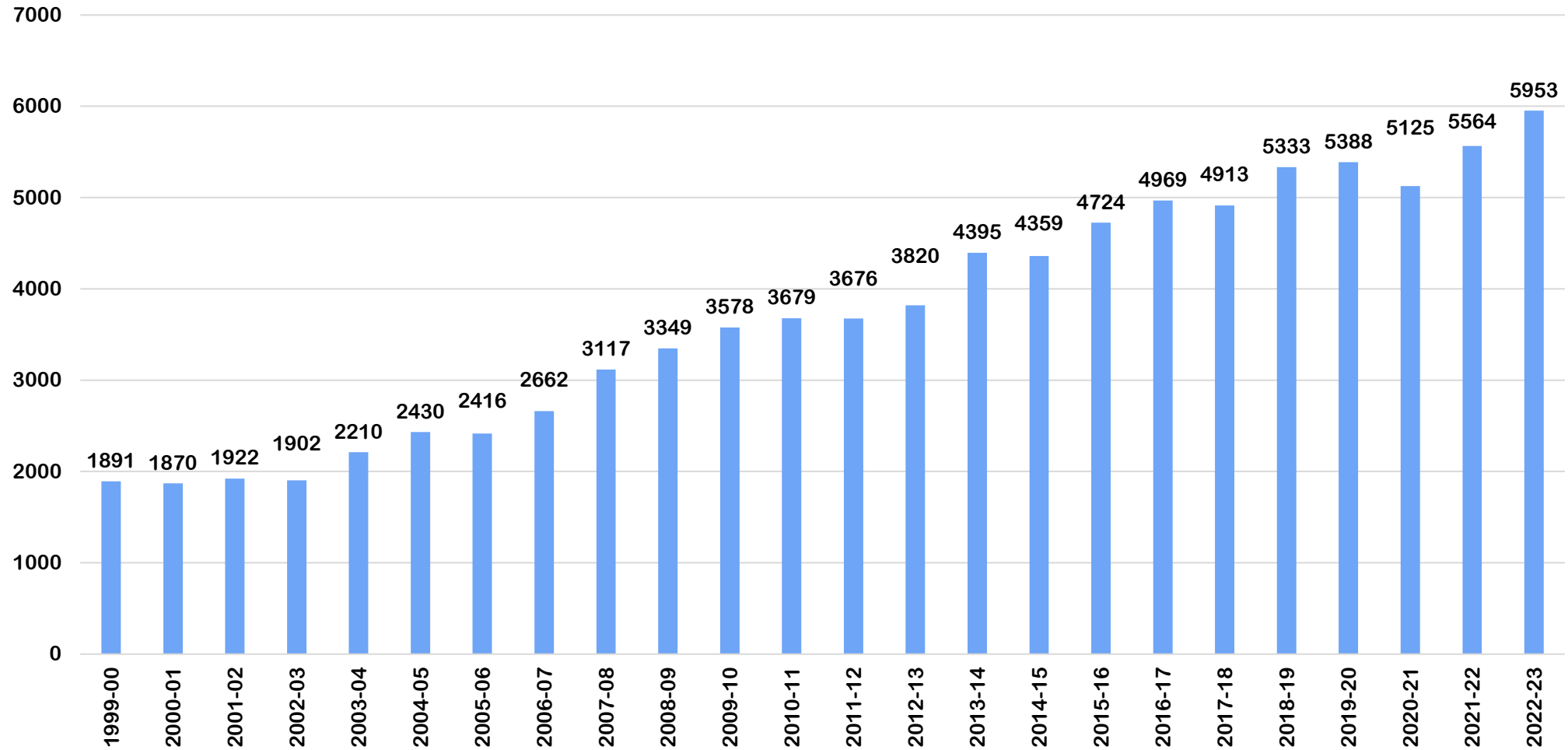


DISTRICT ENROLLMENT RACE AND ETHNICITY ANNUAL CHANGE (PERCENTAGE) PK-12

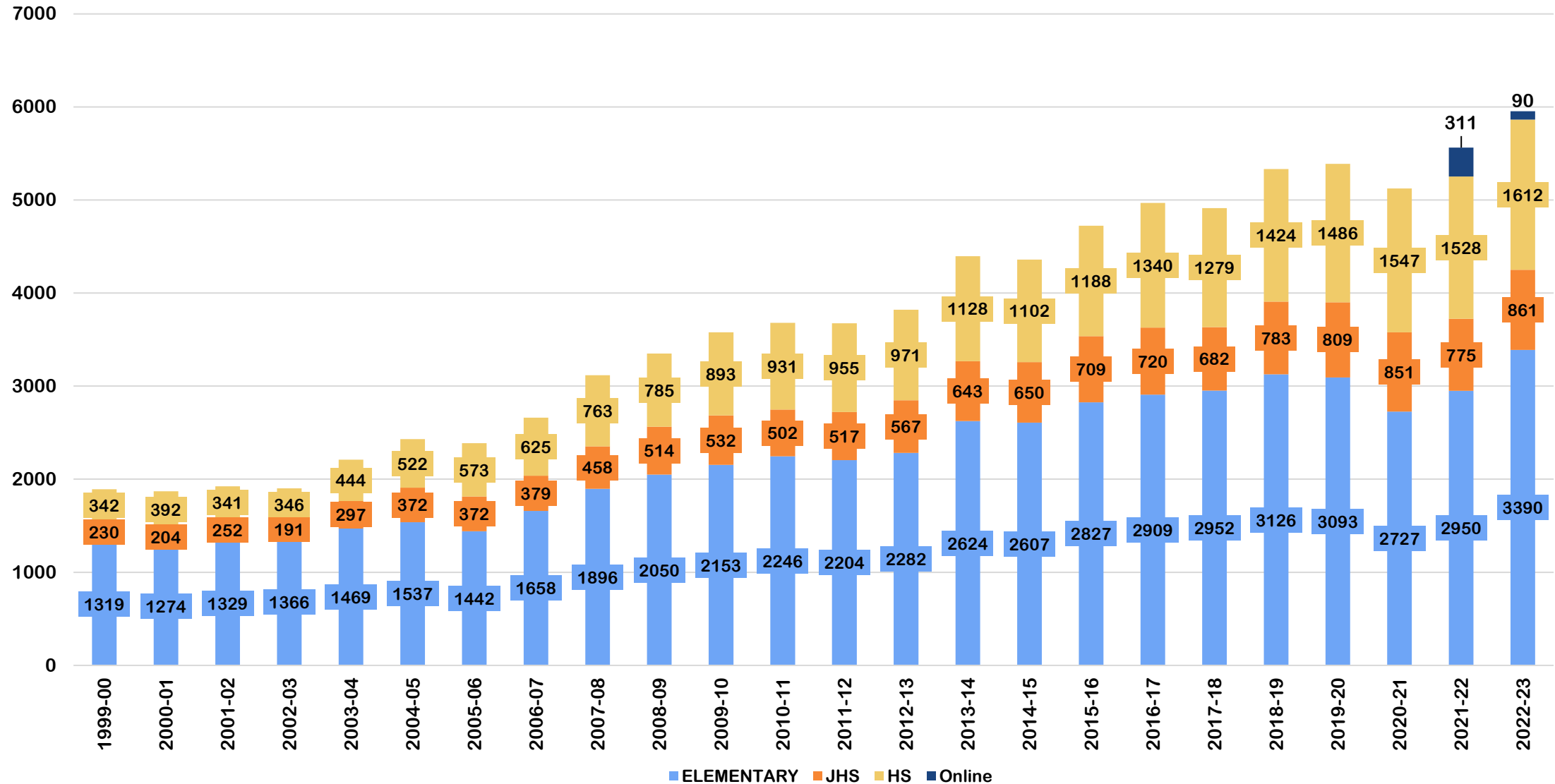


	1999-00	2000-01	2001-02	2002-03	2003-04	2004-05	2005-06	2006-07	2007-08	2008-09	2009-10	2010-11	2011-12	2012-13	2013-14	2014-15	2015-16	2016-17	2017-18	2018-19	2019-20	2020-21	2021-22	2022-23
Asian		0.6%	0.2%	-0.1%	0.3%	0.8%	-0.2%	-0.1%	0.0%	0.2%	-0.2%	-0.1%	-0.8%	-0.2%	0.1%	-0.1%	0.1%	0.0%	-0.1%	-0.3%	-0.1%	0.0%	-0.4%	-0.3%
Black		0.8%	0.7%	1.4%	1.4%	0.2%	1.1%	1.1%	2.3%	-0.7%	0.3%	0.0%	-0.4%	0.1%	0.9%	0.9%	0.5%	0.7%	0.5%	0.7%	0.5%	1.1%	-0.1%	1.2%
Hispanic		1.0%	0.5%	0.4%	0.2%	0.6%	0.6%	0.5%	0.0%	0.7%	0.7%	0.5%	1.0%	0.6%	0.2%	0.3%	0.1%	0.4%	0.1%	0.3%	0.5%	0.0%	0.4%	0.2%
Multi-Racial												-0.2%	1.9%	1.3%	0.6%	0.3%	0.5%	0.2%	0.3%	0.3%	0.2%	0.1%	0.2%	0.1%
Native American/ Alaskan		0.1%	-0.1%	0.1%	-0.2%	0.0%	-0.1%	0.0%	0.0%	-0.1%	0.0%	0.1%	0.1%	0.0%	-0.1%	0.0%	-0.1%	0.0%	0.0%	-0.1%	0.0%	0.0%	0.0%	0.0%
Pacific Islander/ Other													0.0%	0.0%	0.0%	0.0%	0.0%	0.1%	0.0%	0.0%	0.0%	0.0%	0.0%	0.1%
White		-2.5%	-1.2%	-1.9%	-1.7%	-1.6%	-1.4%	-1.4%	-2.3%	-0.1%	-1.1%	-0.3%	-1.9%	-1.9%	-1.7%	-1.5%	-1.0%	-1.3%	-0.7%	-1.0%	-1.1%	-1.1%	-0.3%	-1.7%

FREE AND REDUCED-PRICE LUNCH ELIGIBLE STUDENTS HEADCOUNT (NUMBER) K-12



FREE AND REDUCED-PRICE LUNCH ELIGIBLE STUDENTS – HEADCOUNT (NUMBER) K-12



DISTRICT ENROLLMENT CHANGE

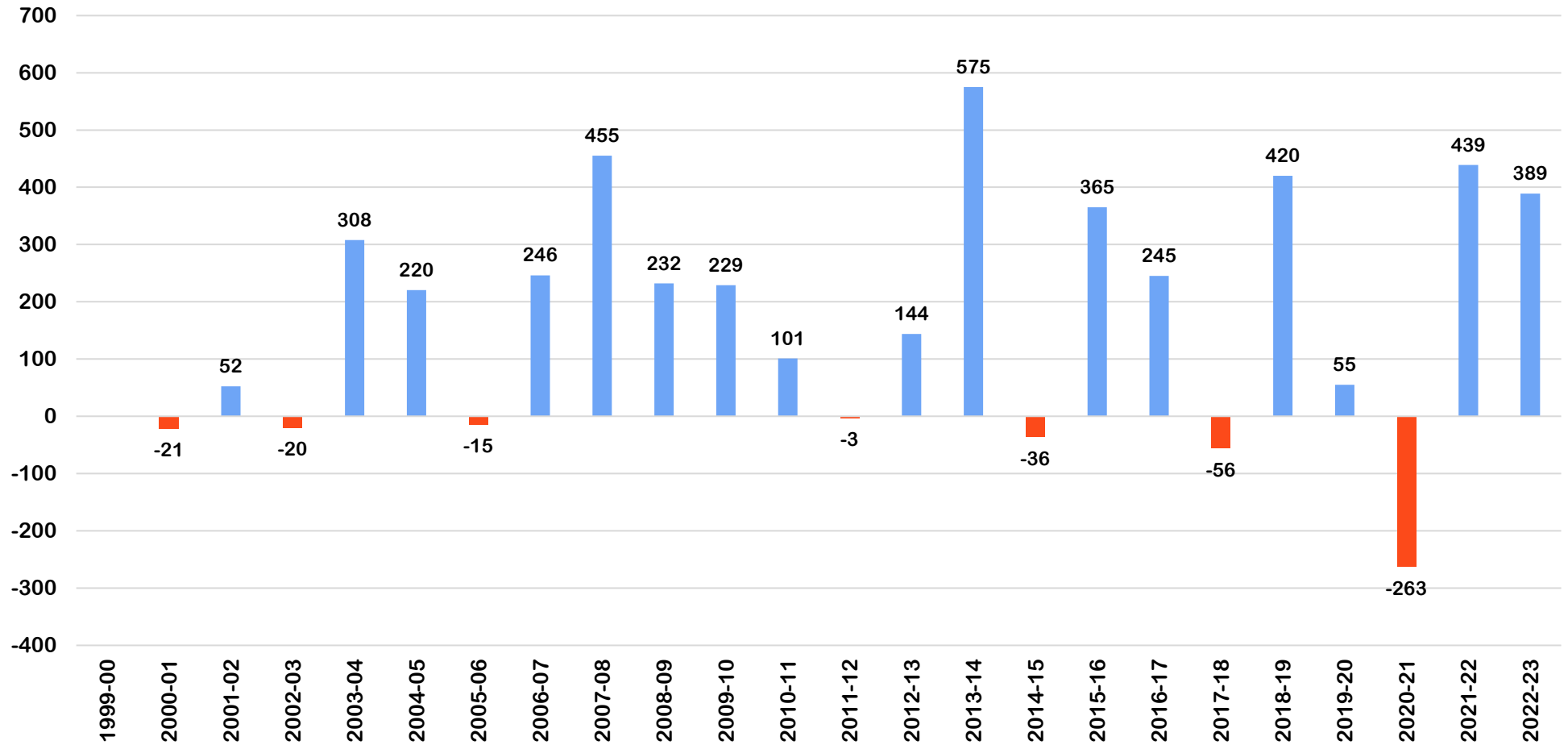
24-year
1999-00 to
2022-23
+4062

10-year
2013-14 to
2022-23
+1558

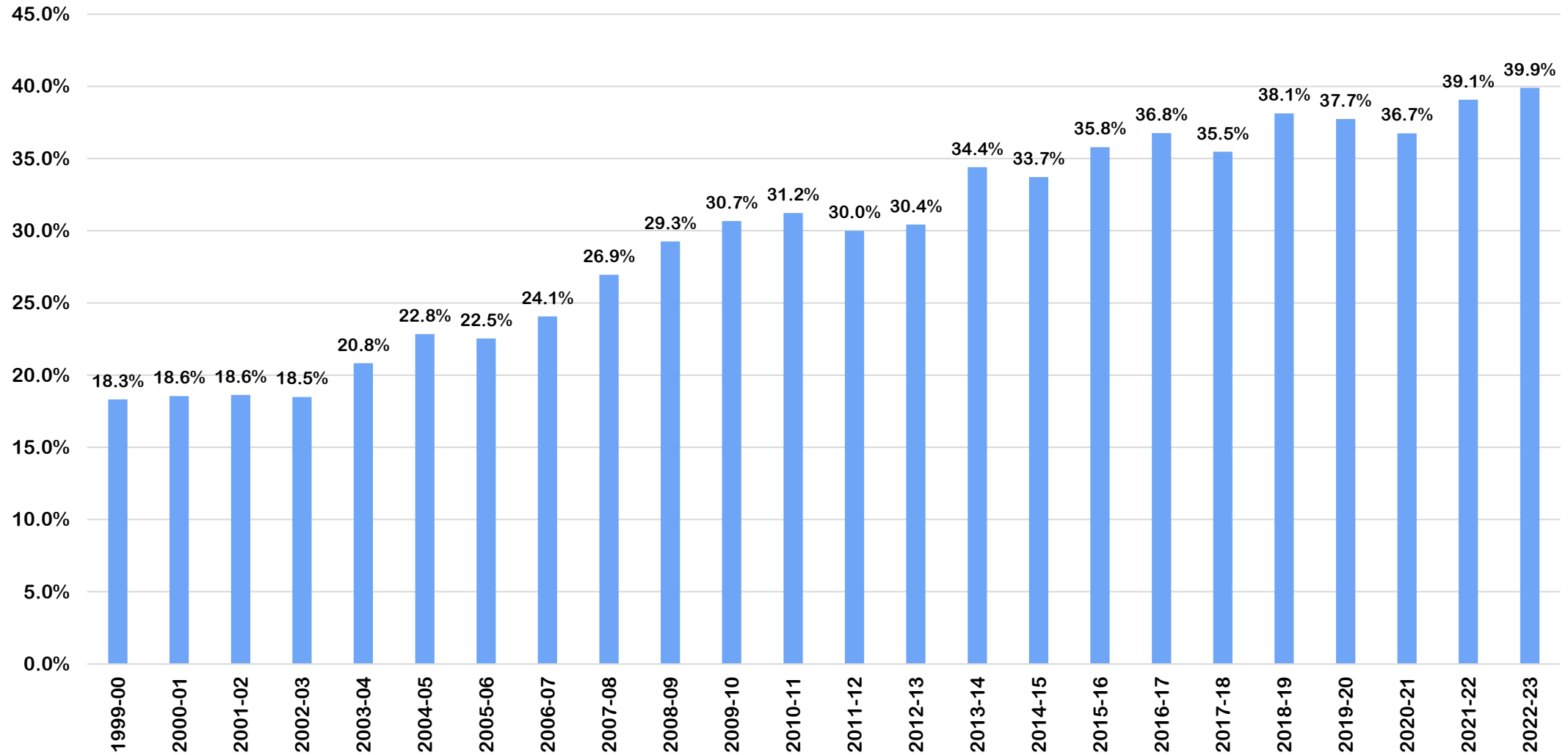
5-year
2018-19 to
2022-23
+620



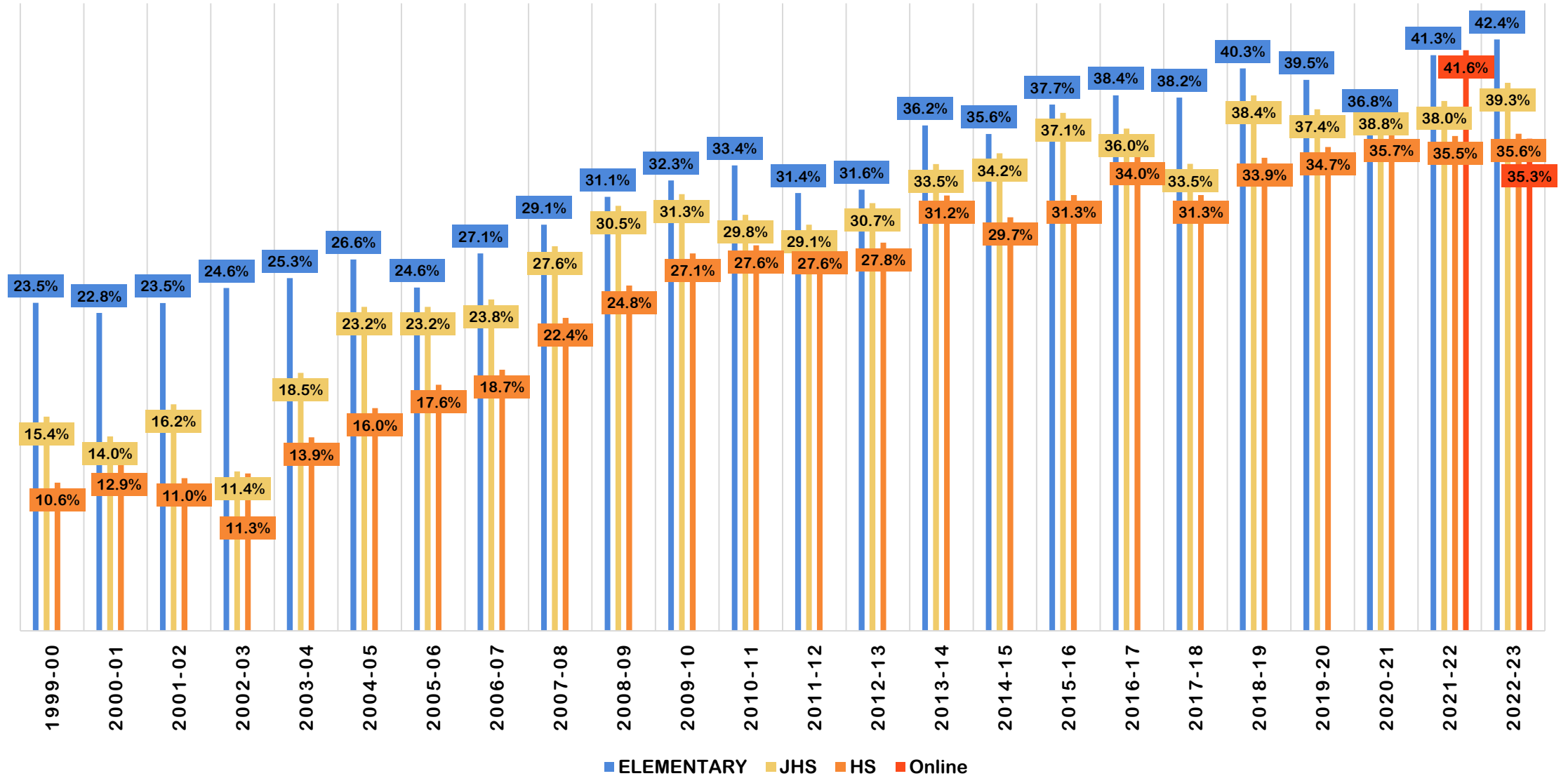
FREE AND REDUCED-PRICE LUNCH ELIGIBLE STUDENTS ANNUAL CHANGE HEADCOUNT (NUMBER) K-12



FREE AND REDUCED-PRICE LUNCH ELIGIBLE STUDENTS HEADCOUNT (PERCENTAGE) K-12



FREE AND REDUCED-PRICE LUNCH ELIGIBLE STUDENTS (PERCENTAGE) K-12



DISTRICT ENROLLMENT CHANGE

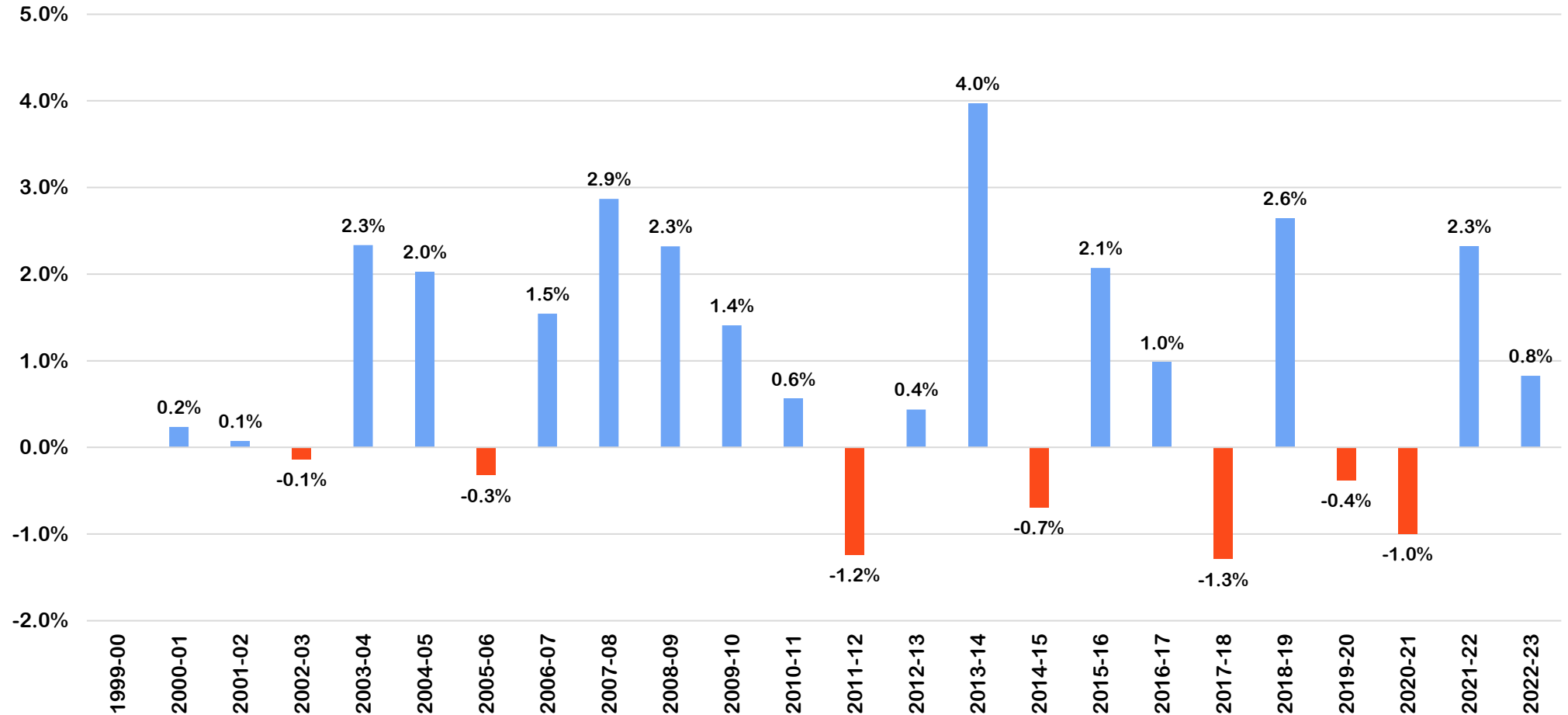
24-year
1999-00 to
2022-23
21.58%

10-year
2013-14 to
2022-23
5.49%

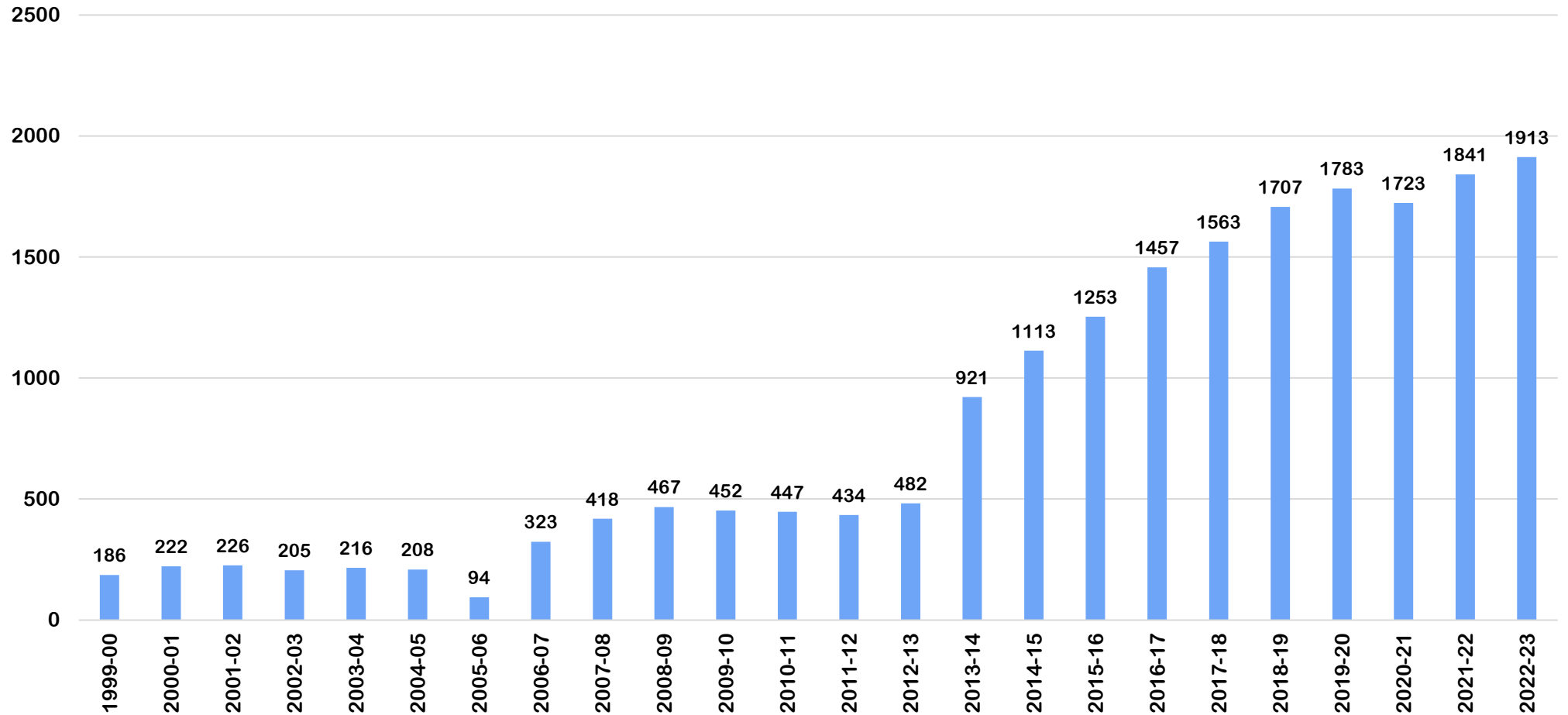
5-year
2018-19 to
2022-23
1.78%



FREE AND REDUCED-PRICE LUNCH ELIGIBLE STUDENTS ANNUAL CHANGE HEADCOUNT (PERCENTAGE) K-12



ENGLISH LANGUAGE LEARNER ELIGIBLE STUDENTS HEADCOUNT (NUMBER) K-12



In school year 2022-23, state law changed to allow districts to count ELL students for up to five years. They are no longer counted after exiting. Previously, students were counted up to four years and one year after exiting.

In 2013 state screening and identification processes changed.

DISTRICT ENROLLMENT CHANGE

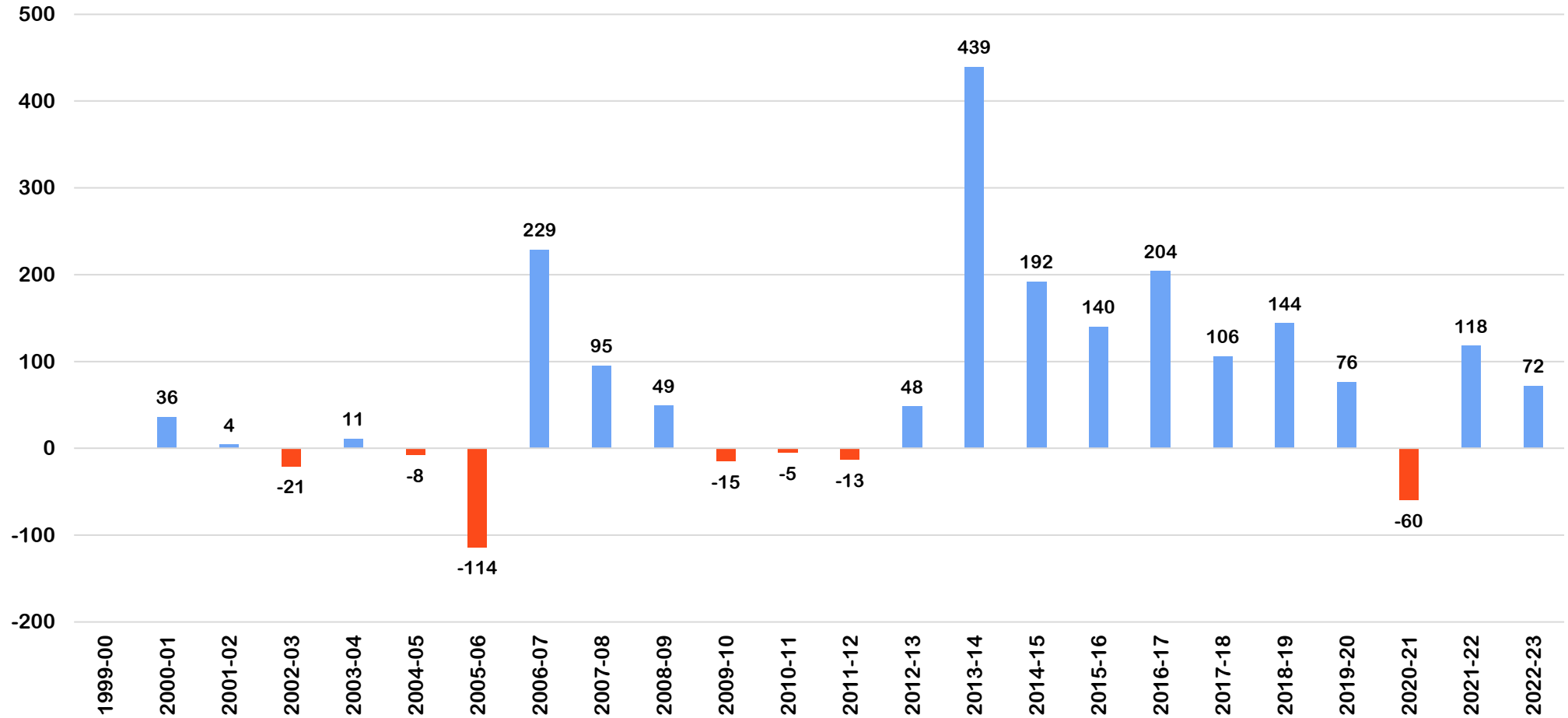
24-year
1999-00 to
2022-23
+1727

10-year
2013-14 to
2022-23
+992

5-year
2018-19 to
2022-23
+206



ENGLISH LANGUAGE LEARNER ELIGIBLE STUDENTS ANNUAL CHANGE (NUMBER) HEADCOUNT K-12



DISTRICT ENROLLMENT CHANGE

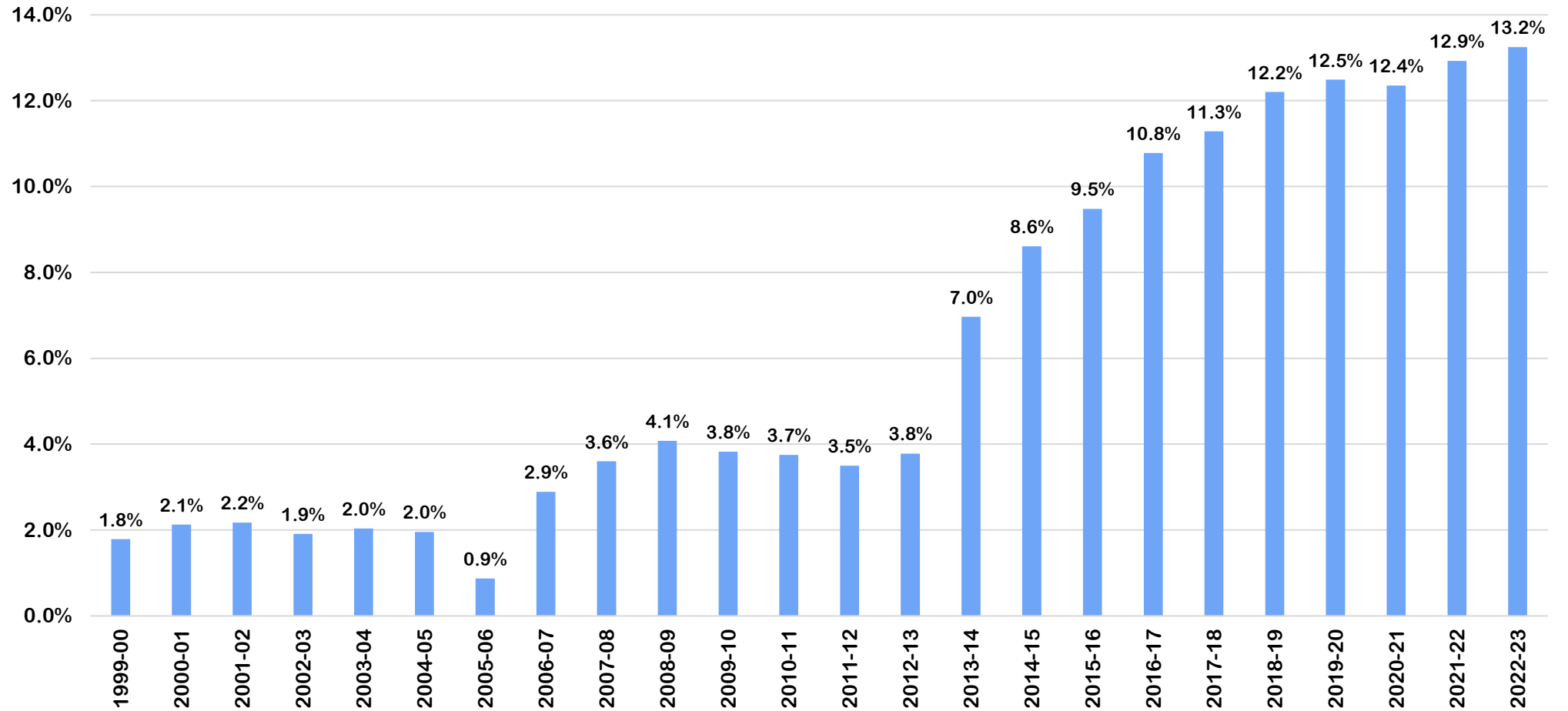
24-year
1999-00 to
2022-23
11.46%

10-year
2013-14 to
2022-23
6.28%

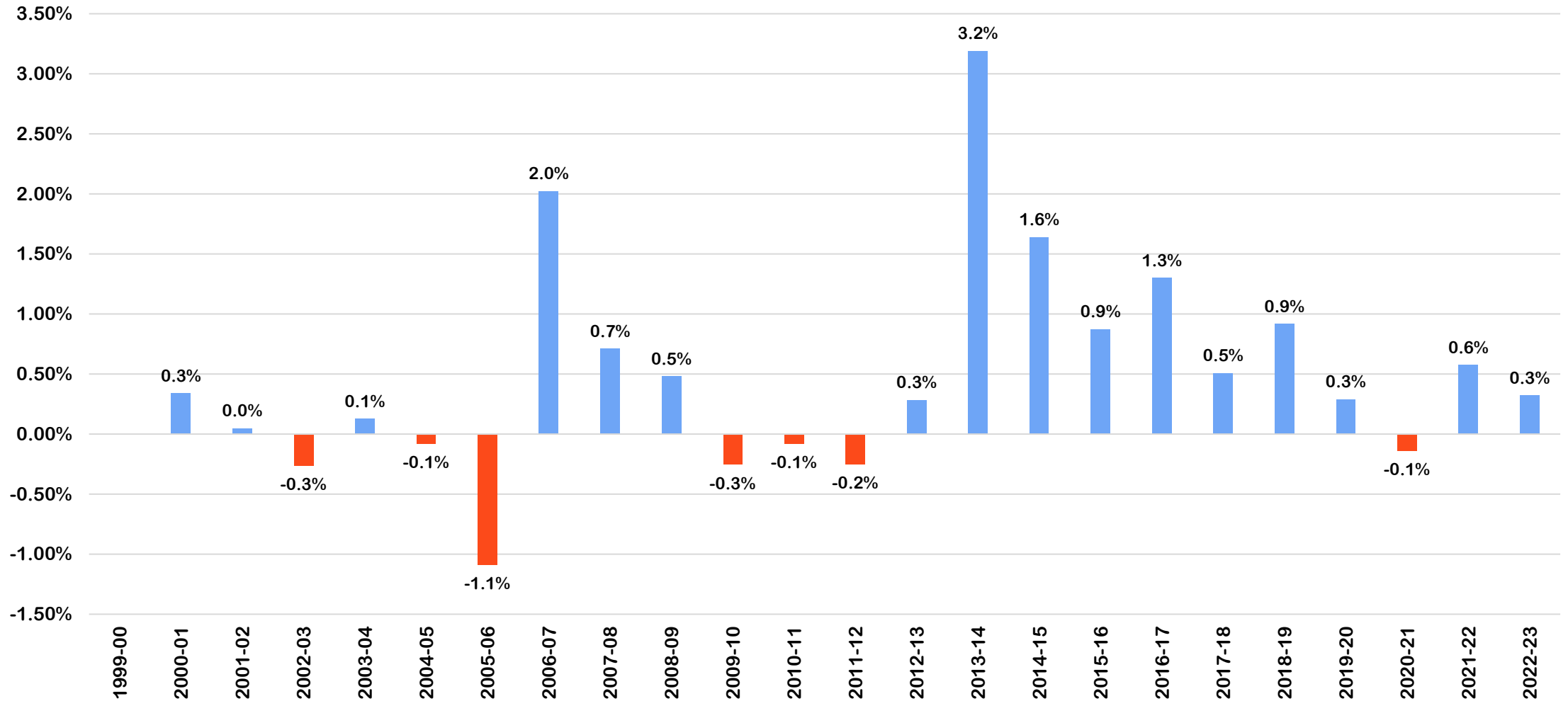
5-year
2018-19 to
2022-23
1.05%



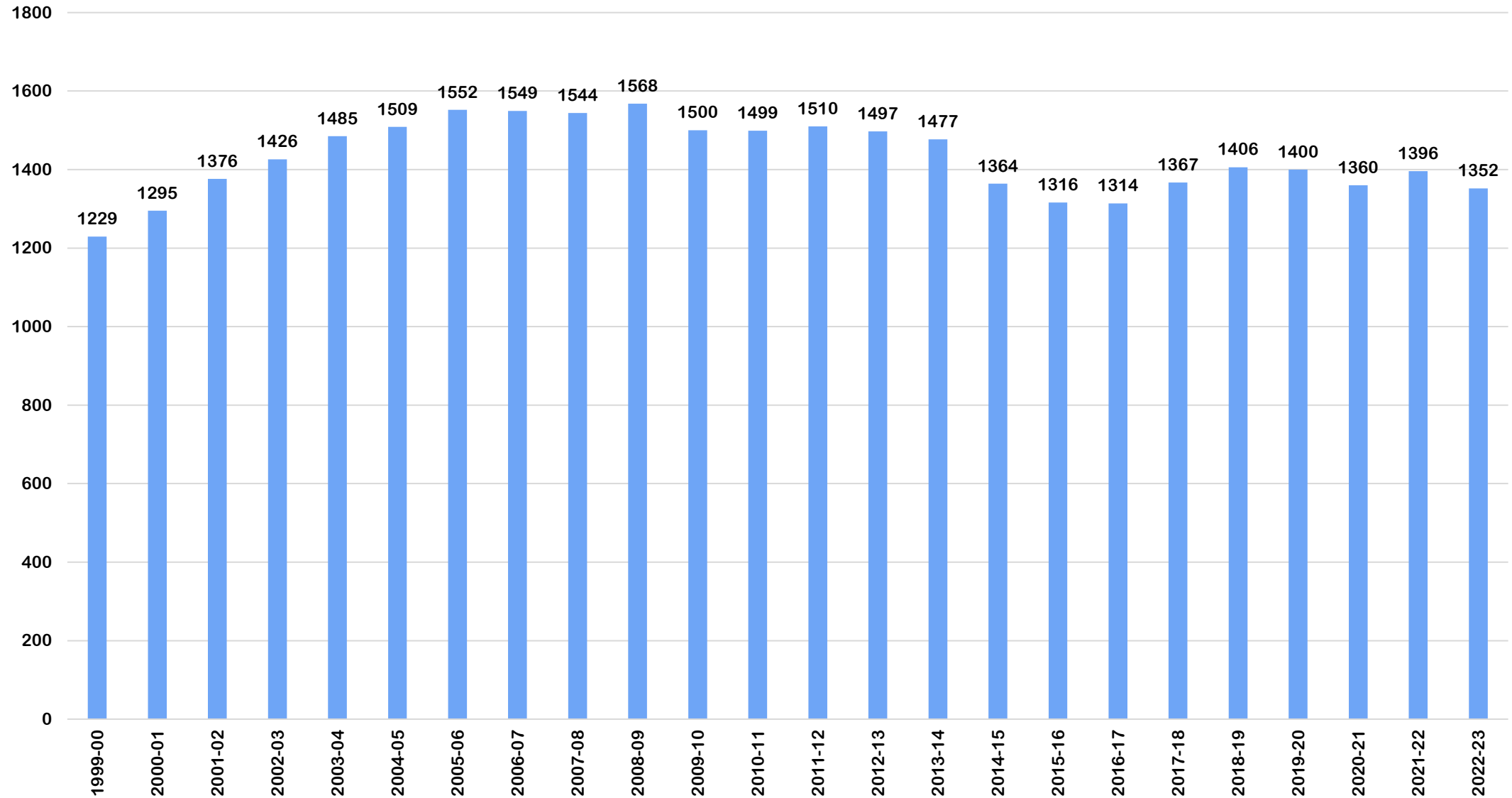
ENGLISH LANGUAGE LEARNER ELIGIBLE STUDENTS (PERCENTAGE) K-12



ENGLISH LANGUAGE LEARNER ELIGIBLE STUDENTS ANNUAL CHANGE (PERCENTAGE) K-12



SPECIAL EDUCATION ELIGIBLE STUDENTS – HEADCOUNT (NUMBER) K - 12



DISTRICT ENROLLMENT CHANGE

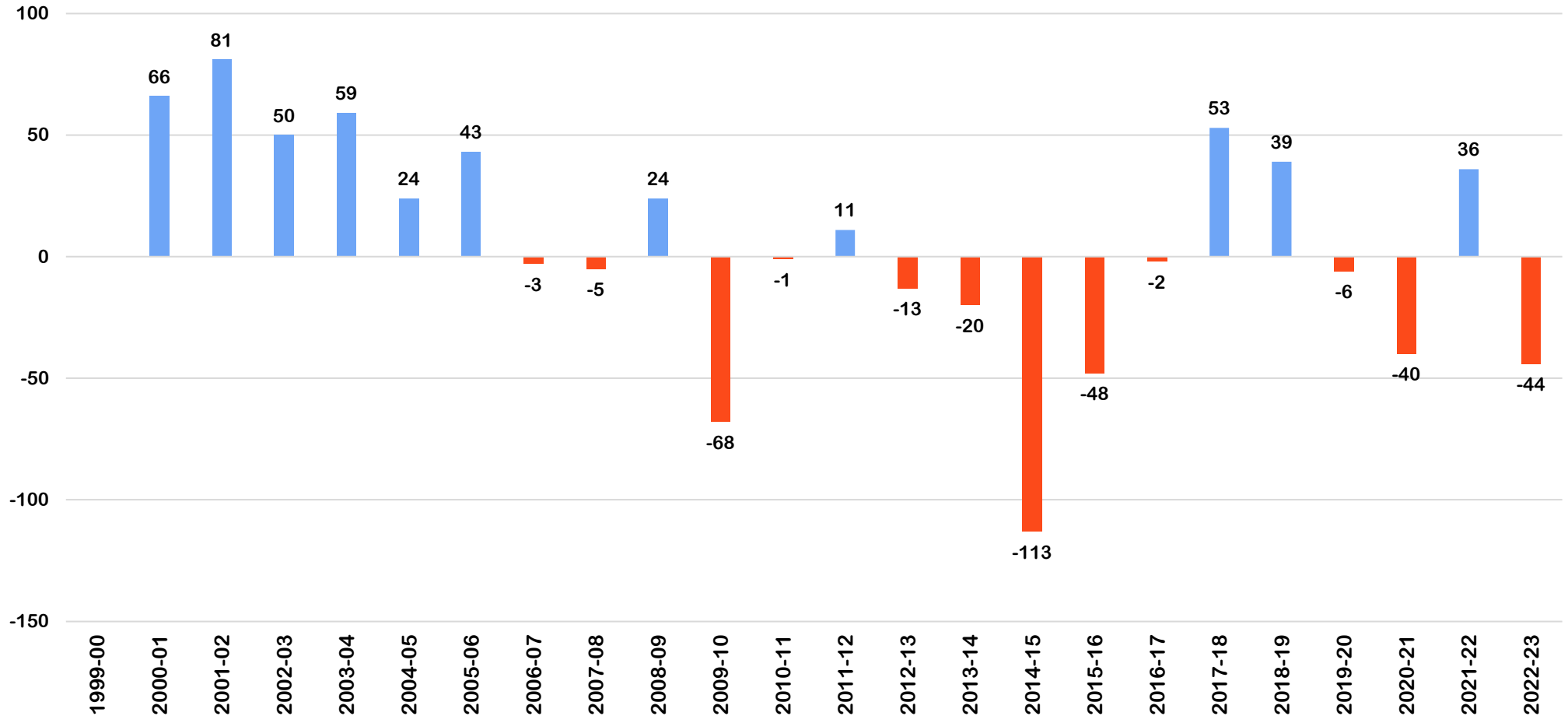
24-year
1999-00 to
2022-23
+123

10-year
2013-14 to
2022-23
-125

5-year
2018-19 to
2022-23
-54



SPECIAL EDUCATION ELIGIBLE STUDENTS ANNUAL CHANGE (NUMBER) K-12



DISTRICT ENROLLMENT CHANGE

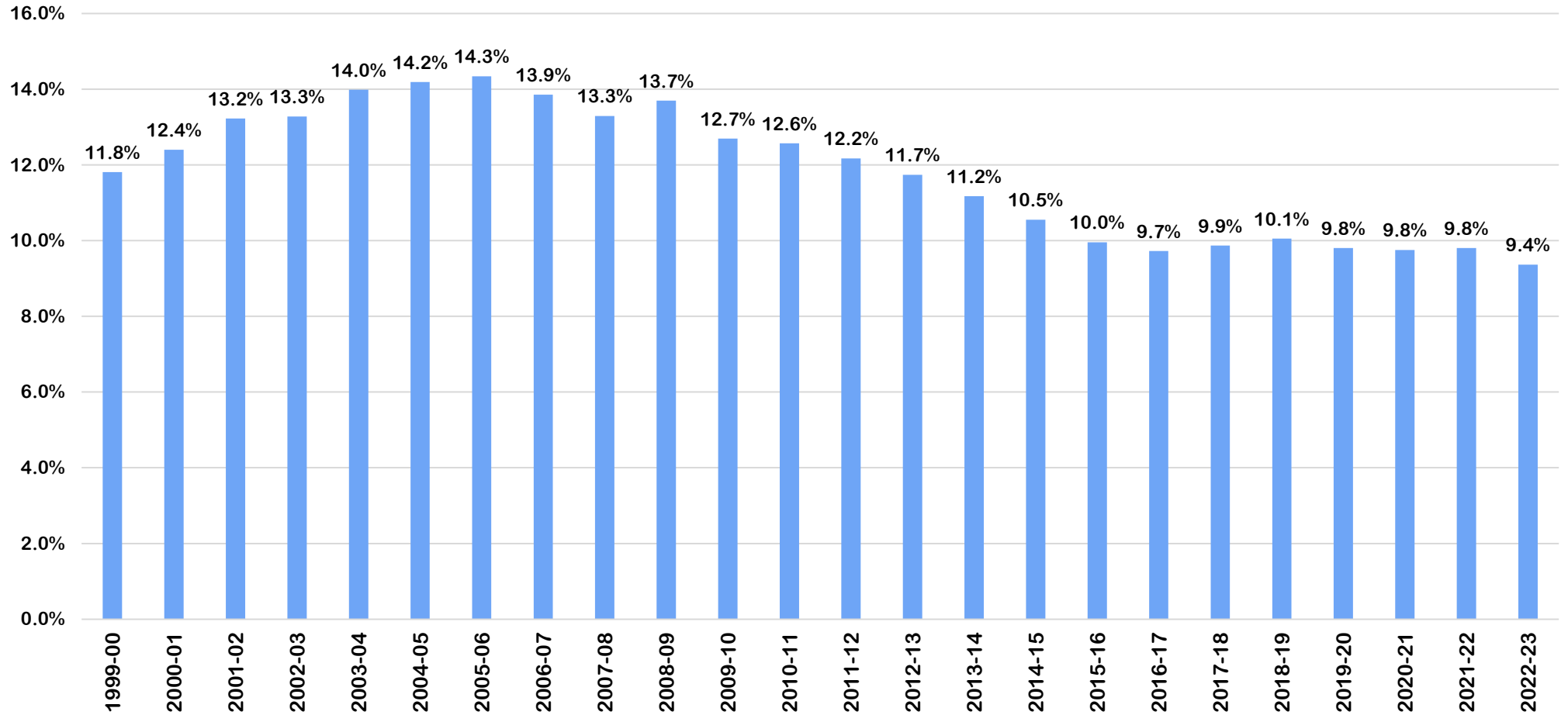
24-year
1999-00 to
2022-23
-2.45%

10-year
2013-14 to
2022-23
-1.81%

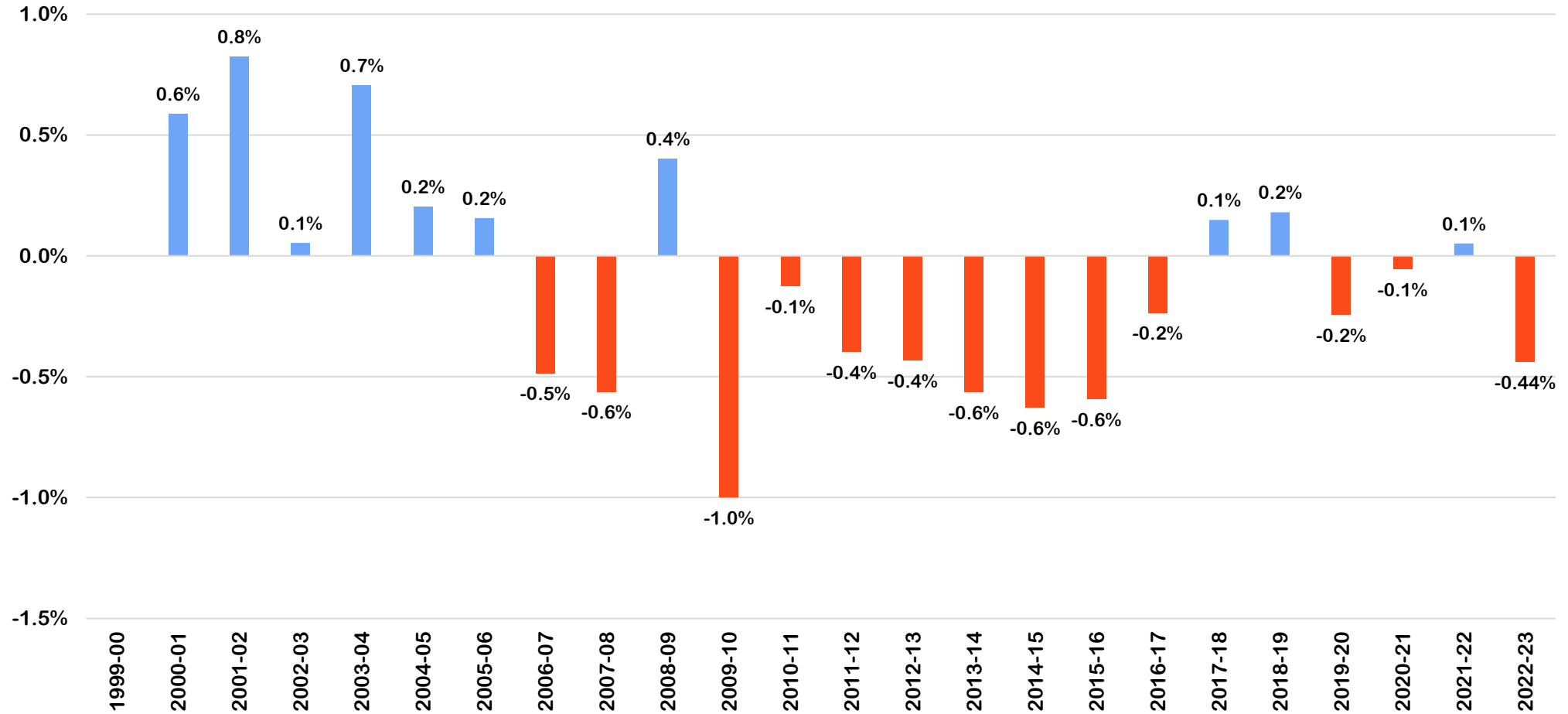
5-year
2018-19 to
2022-23
-0.69%



SPECIAL EDUCATION ELIGIBLE STUDENTS (PERCENTAGE) K-12



SPECIAL EDUCATION ELIGIBLE STUDENTS ANNUAL CHANGE (PERCENTAGE) K-12

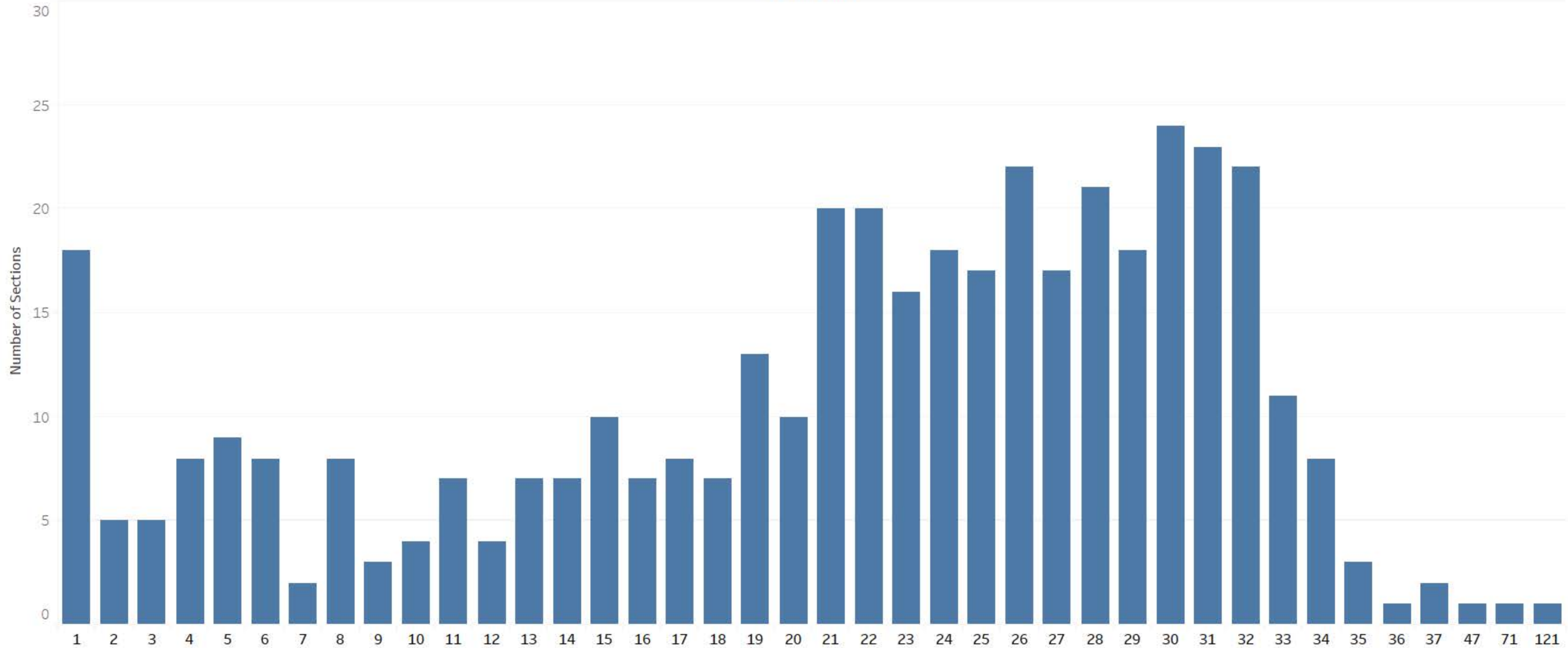


SECONDARY MEDIAN CLASS SIZES 2022-23

	City High School	Liberty High School	West High School	Elizabeth Tate High School	ICCS Online	Southeast Junior High	North Central Junior High	Northwest Junior High	Total
Art	24	18	20	5	16.5	29	27.5	27	24
Business	30	19	19		8	19	10	19	19
Engineering (PLTW)	11	19	16			22.5	27.5	26	17
English Language Arts	26	28	26	10	24	28	26	23	25
Family & Consumer Science	5	22	22	4	13	29.5	29	26	23
Industrial Arts	8	9	20	1		19	21	22	15
Mathematics	26	25	23	7	15	27	25.5	15	24
Music	32	25	12		14	22	19	19	20.5
Physical Education & Health	21	31	25	12	24	29	33	25	27
Science	25	25	27	7	20	27	28	23	25
Social Studies	28	27	26	11	20	27	32	23	27
World Languages	24	24	27		3	27	33	31	26
Grand Total	26	26	24	8	18	27	28	23	25

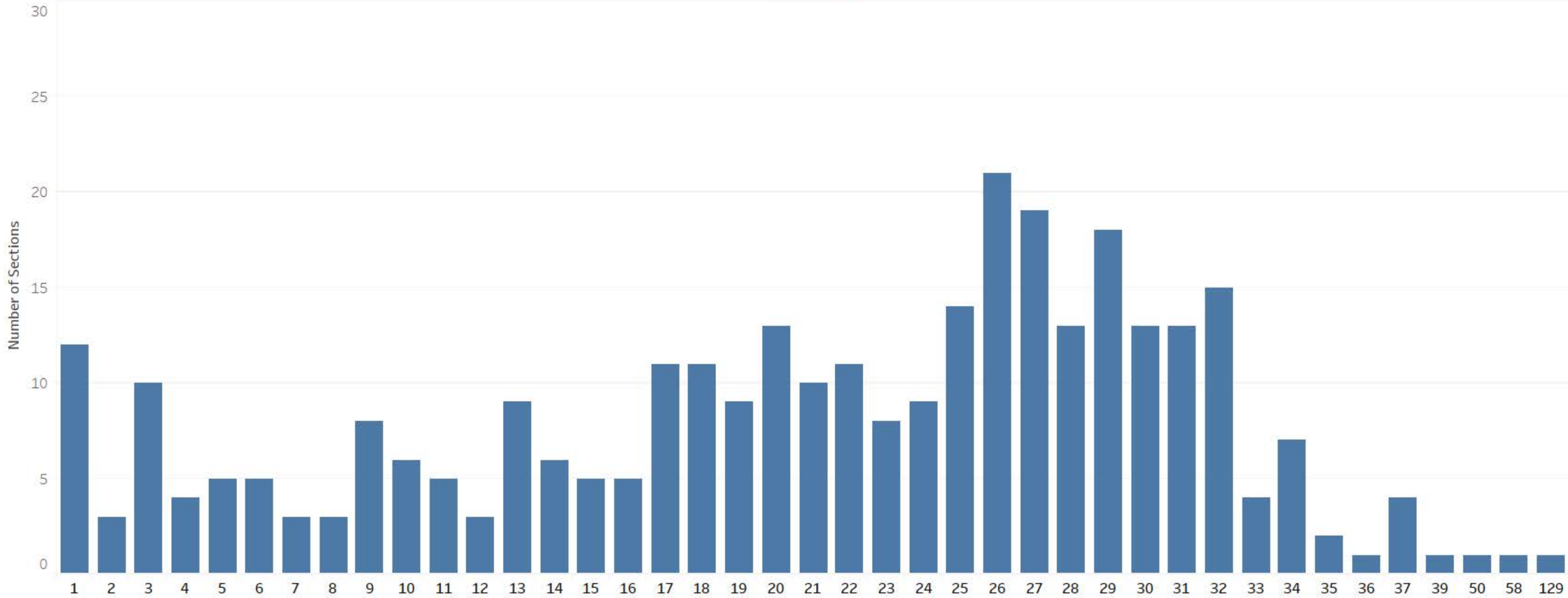
Frequency of Class Size for: City High School

Student Count



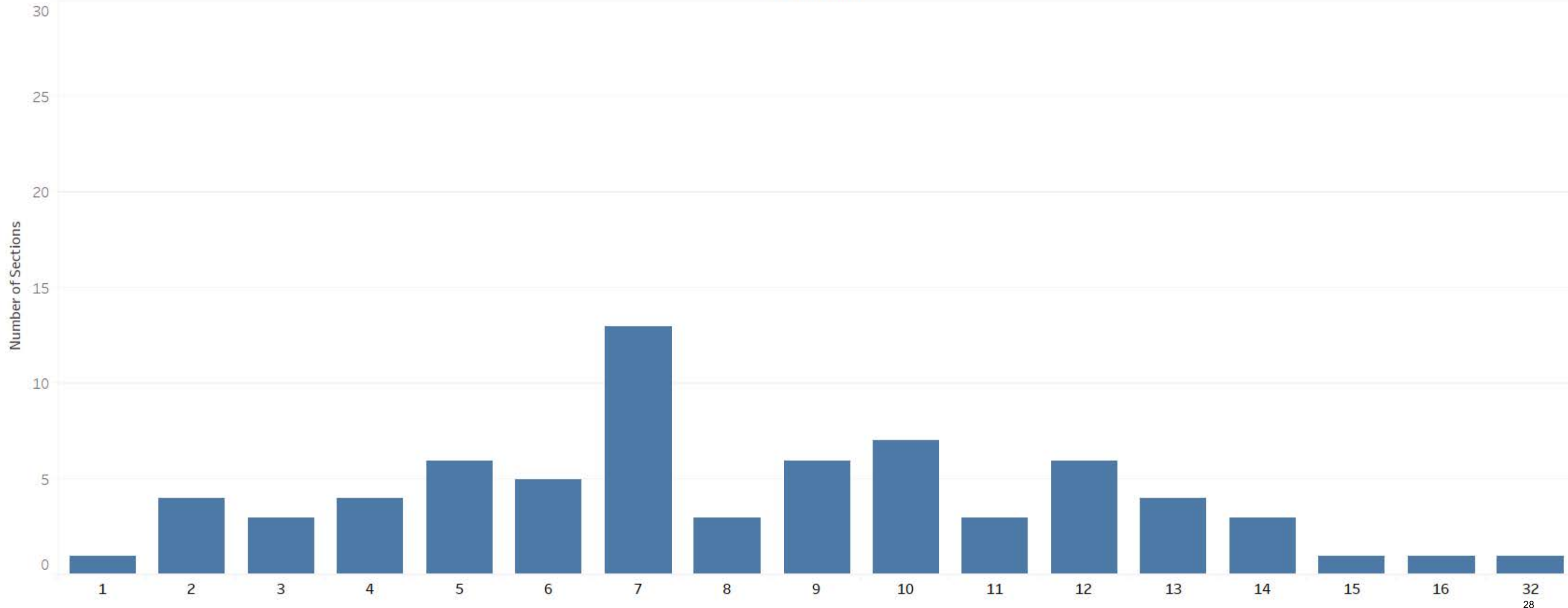
Frequency of Class Size for: Liberty High School

Student Count



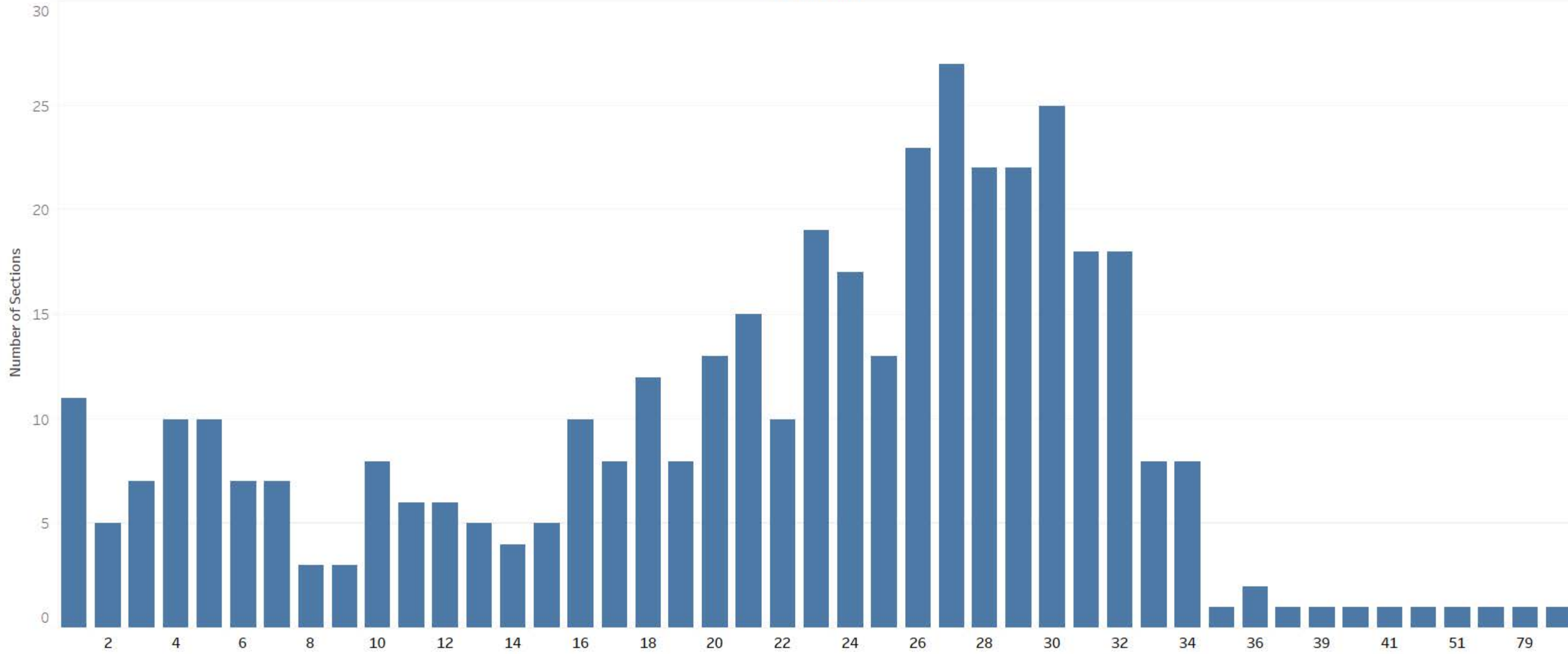
Frequency of Class Size for: Elizabeth Tate High School

Student Count



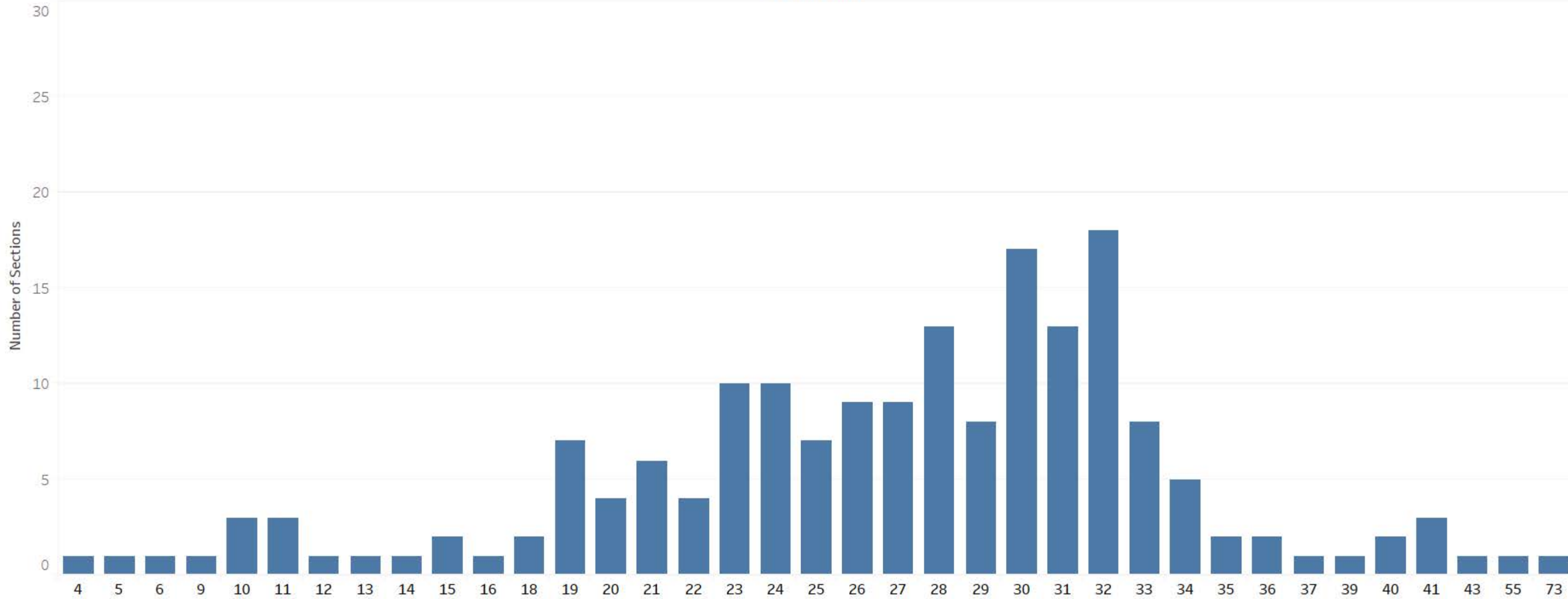
Frequency of Class Size for: West High School

Student Count



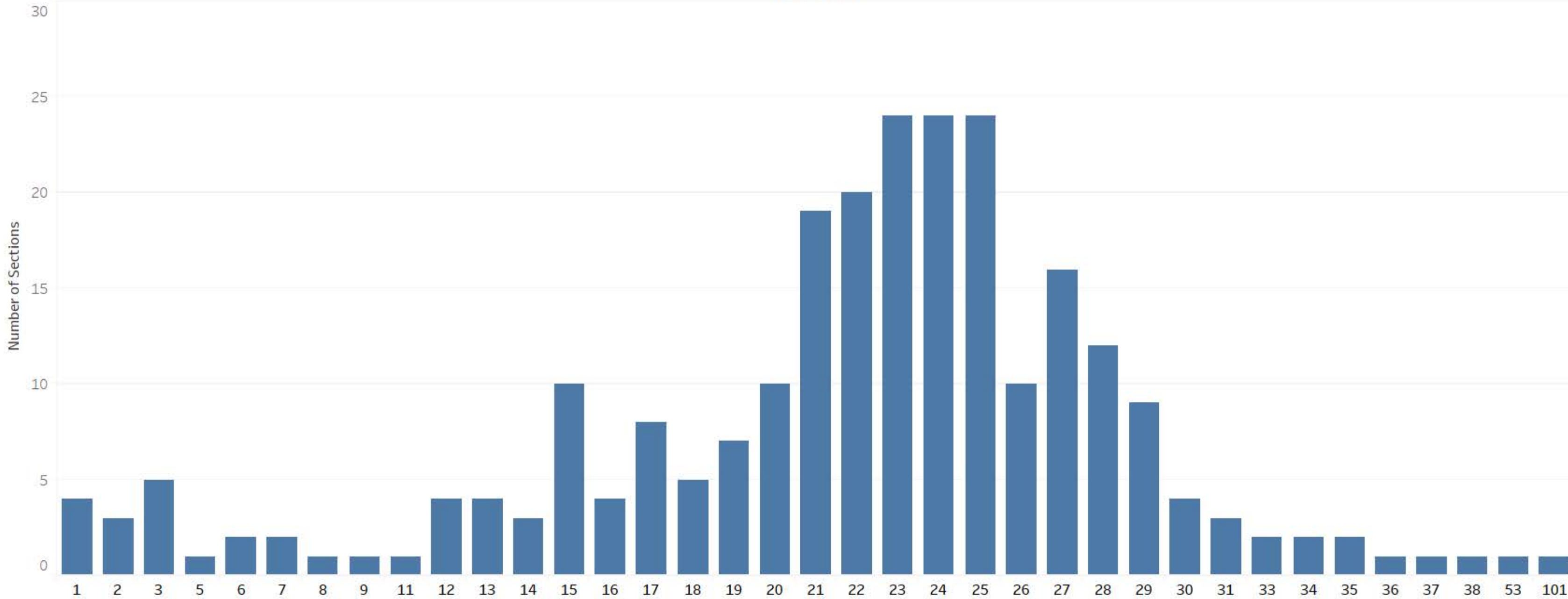
Frequency of Class Size for: North Central Junior High

Student Count

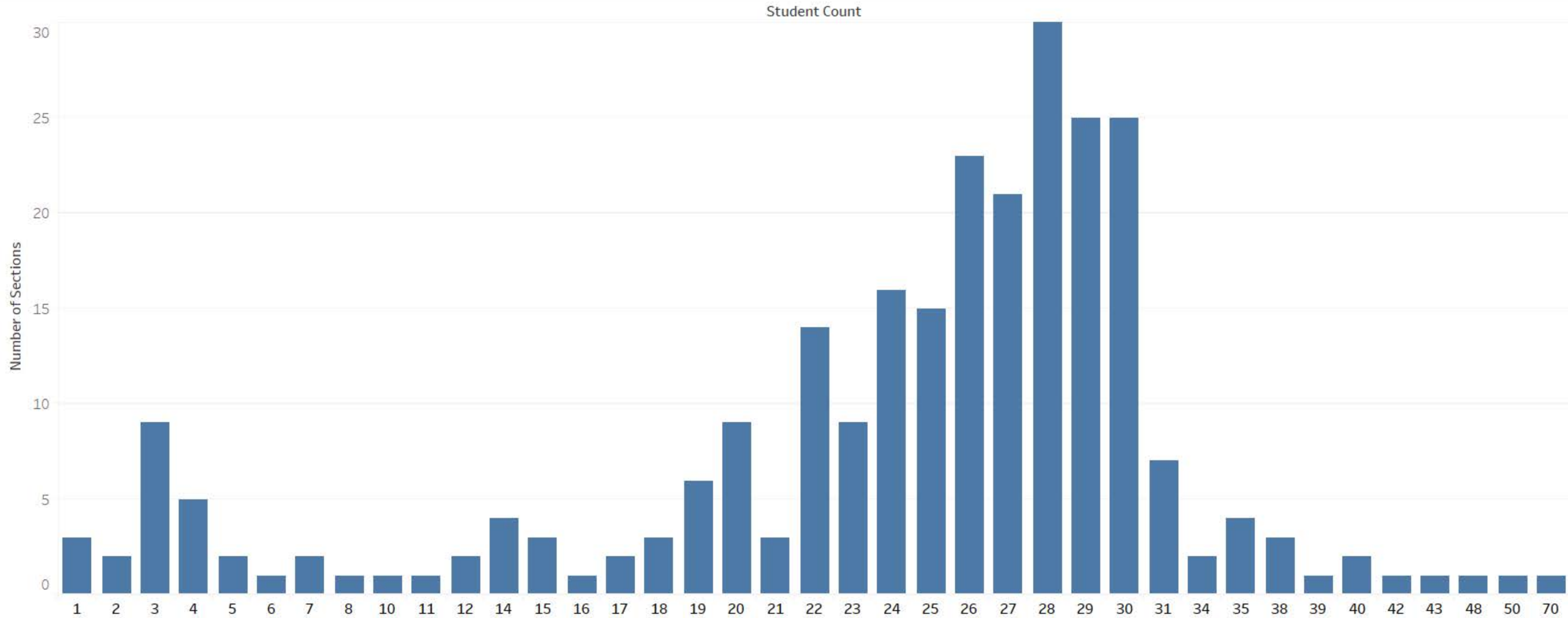


Frequency of Class Size for: Northwest Junior High

Student Count



Frequency of Class Size for: South East Junior High



		Hills Elementary					Kirkwood Elementary						Alexander Elementary											
WRAM level for K doesn't go above 3																								
22-23 WRAM 1-5 Based on FRL(80,60,50,40)		SES 73.9%					SES 70.5%						SES 64.5%											
Updated: 1:00 PM 10/1/2022		ELL					ELL						ELL											
		SpEd					SpEd						SpEd											
District Total							21-22 Actual FTE			22-23 WRAM Allocation			21-22 Actual FTE			22-23 WRAM Allocation			21-22 Actual FTE			22-23 WRAM Allocation		
21-22 Actual FTE			22-23 WRAM Allocation				WRAM 1			WRAM 2			WRAM 1			WRAM 2			WRAM 1			WRAM 2		
Students	Sections	Avg. Class Size	Students	Sections	Avg. Class Size	Students	Sections	Avg. Class Size	Students	Sections	Avg. Class Size	Students	Sections	Avg. Class Size	Students	Sections	Avg. Class Size	Students	Sections	Avg. Class Size	Students	Sections	Avg. Class Size	
KG	1086	59.5	18.3	1043	54	19.3	20	2.0	10.0	17	1	17.0	35	2.0	17.5	40	2	20.0	62	4.0	15.5	50	3	16.7
1	1090	58.0	18.8	1098	53	20.7	18	2.0	9.0	19	1	19.0	36	2.0	18.0	37	2	18.5	40	3.0	13.3	63	3	21.0
2	1073	55.0	19.5	1094	54	20.3	18	1.0	18.0	19	1	19.0	42	3.0	14.0	32	2	16.0	46	3.0	15.3	41	2	20.5
3	1090	49.0	22.2	1068	48	22.3	22	1.0	22.0	20	1	20.0	30	2.0	15.0	38	2	19.0	44	2.0	22.0	46	2	23.0
4	1099	50.0	22.0	1091	48	22.7	24	2.0	12.0	20	1	20.0	34	2.0	17.0	33	2	16.5	33	2.0	16.5	44	2	22.0
5	1056	48.5	21.8	1093	47	23.3	12	1.0	12.0	24	1	24.0	27	2.0	13.5	36	2	18.0	38	2.0	19.0	32	2	16.0
6	1127	50.5	22.3	1062	45	23.6	31	2.0	15.5	11	1	11.0	30	2.0	15.0	28	2	14.0	32	2.0	16.0	38	2	19.0
Total	7621	370.5	20.6	7549	349	21.6	145	11.0	13.2	130	7	18.6	234	15.0	15.6	244	14	17.4	295	18.0	16.4	314	16	19.6
Grant Wood Elementary							Twain Elementary						Horn Elementary						Coralville Central Elementary					
SES 68.2%							SES 64.5%						SES 56.7%						SES 53.3%					
ELL							ELL						ELL						ELL					
SpEd							SpEd						SpEd						SpEd					
21-22 Actual FTE			22-23 WRAM Allocation				21-22 Actual FTE			22-23 WRAM Allocation			21-22 Actual FTE			22-23 WRAM Allocation			21-22 Actual FTE			22-23 WRAM Allocation		
WRAM 1			WRAM 2				WRAM 1			WRAM 2			WRAM 3			WRAM 3			WRAM 3			WRAM 3		
Students	Sections	Avg. Class Size	Students	Sections	Avg. Class Size	Students	Sections	Avg. Class Size	Students	Sections	Avg. Class Size	Students	Sections	Avg. Class Size	Students	Sections	Avg. Class Size	Students	Sections	Avg. Class Size	Students	Sections	Avg. Class Size	
KG	51	3.0	17.0	56	3	18.7	33	2.0	16.5	35	2	17.5	68	3.0	22.7	68	3	22.7	67	3.0	22.3	61	3	20.3
1	55	3.0	18.3	53	3	17.7	31	2.0	15.5	30	2	15.0	78	4.0	19.5	72	3	24.0	65	3.0	21.7	62	3	20.7
2	51	3.0	17.0	47	3	15.7	27	2.0	13.5	29	2	14.5	54	3.0	18.0	80	4	20.0	62	3.0	20.7	72	3	24.0
3	56	3.0	18.7	54	3	18.0	30	2.0	15.0	23	1	23.0	64	3.0	21.3	63	3	21.0	53	2.0	26.5	61	3	20.3
4	52	3.0	17.3	53	3	17.7	26	1.0	26.0	33	2	16.5	60	3.0	20.0	64	3	21.3	58	3.0	19.3	59	3	19.7
5	50	3.0	16.7	54	3	18.0	25	2.0	12.5	24	1	24.0	42	2.0	21.0	55	2	27.5	54	2.0	27.0	66	3	22.0
6	41	2.0	20.5	51	2	25.5	31	2.0	15.5	24	1	24.0	55	2.0	27.5	46	2	23.0	63	3.0	21.0	65	3	21.7
Total	356	20.0	17.8	368	20	18.4	203	13.0	15.6	198	11	18.0	421	20.0	21.1	448	20	22.4	422	19.0	22.2	446	21	21.2

Hoover Elementary							Lucas Elementary						Weber Elementary						Borlaug Elementary												
SES	47.1%			ESSA				SES	49.2%			ESSA				SES	52.9%			ESSA				SES	35.2%			ESSA			
ELL				IA RC				ELL				IA RC				ELL				IA RC				ELL				IA RC			
SpEd							SpEd							SpEd							SpEd										
21-22 Actual FTE				22-23 WRAM Allocation			21-22 Actual FTE			22-23 WRAM Allocation			21-22 Actual FTE			22-23 WRAM Allocation			21-22 Actual FTE			22-23 WRAM Allocation									
WRAM 3			WRAM 4				WRAM 3			WRAM 4			WRAM 3			WRAM 3			WRAM 4			WRAM 5									
	Students	Sections	Avg. Class Size	Students	Sections	Avg. Class Size	Students	Sections	Avg. Class Size	Students	Sections	Avg. Class Size	Students	Sections	Avg. Class Size	Students	Sections	Avg. Class Size	Students	Sections	Avg. Class Size	Students	Sections	Avg. Class Size	Students	Sections	Avg. Class Size				
KG	76	4.0	19.0	61	3	20.3	42	2.0	21.0	41	2	20.5	74	4.0	18.5	81	4	20.3	50	3.0	16.7	44	2	22.0							
1	76	4.0	19.0	83	4	20.8	39	2.0	19.5	41	2	20.5	59	3.0	19.7	78	4	19.5	58	3.0	19.3	60	3	20.0							
2	56	3.0	18.7	84	4	21.0	31	2.0	15.5	38	2	19.0	83	4.0	20.8	74	4	18.5	56	3.0	18.7	56	2	28.0							
3	64	3.0	21.3	63	3	21.0	37	2.0	18.5	26	1	26.0	81	3.0	27.0	86	4	21.5	47	2.0	23.5	51	2	25.5							
4	62	3.0	20.7	67	3	22.3	42	2.0	21.0	33	2	16.5	93	4.0	23.3	88	4	22.0	68	3.0	22.7	50	2	25.0							
5	47	2.0	23.5	66	3	22.0	44	2.0	22.0	39	2	19.5	83	3.0	27.7	94	4	23.5	57	3.0	19.0	67	3	22.3							
6	67	3.0	22.3	53	2	26.5	43	2.0	21.5	43	2	21.5	65	3.0	21.7	83	3	27.7	61	2.0	30.5	58	2	29.0							
Total	448	22.0	20.4	477	22	21.7	278	14.0	19.9	261	13	20.1	538	24.0	22.4	584	27	21.6	397	19.0	20.9	386	16	24.1							
Longfellow Elementary							Mann Elementary						Garner Elementary						Lincoln Elementary												
SES	52.2%			ESSA				SES	39.0%			ESSA				SES	35.4%			ESSA				SES	29.6%			ESSA			
ELL				IA RC				ELL				IA RC				ELL				IA RC				ELL				IA RC			
SpEd							SpEd							SpEd							SpEd										
21-22 Actual FTE				22-23 WRAM Allocation			21-22 Actual FTE			22-23 WRAM Allocation			21-22 Actual FTE			22-23 WRAM Allocation			21-22 Actual FTE			22-23 WRAM Allocation									
WRAM 4			WRAM 3				WRAM 4			WRAM 5			WRAM 4			WRAM 5			WRAM 4			WRAM 5									
	Students	Sections	Avg. Class Size	Students	Sections	Avg. Class Size	Students	Sections	Avg. Class Size	Students	Sections	Avg. Class Size	Students	Sections	Avg. Class Size	Students	Sections	Avg. Class Size	Students	Sections	Avg. Class Size	Students	Sections	Avg. Class Size	Students	Sections	Avg. Class Size				
KG	43	2.0	21.5	44	2	22.0	31	2.0	15.5	28	2	14.0	57	3.0	19.0	59	3	19.7	24	2.0	12.0	30	2	15.0							
1	57	3.0	19.0	48	2	24.0	37	2.0	18.5	24	1	24.0	60	3.0	20.0	61	3	20.3	30	2.0	15.0	31	2	15.5							
2	68	3.0	22.7	61	3	20.3	20	1.0	20.0	34	2	17.0	74	3.0	24.7	59	3	19.7	27	2.0	13.5	35	2	17.5							
3	49	2.0	24.5	69	3	23.0	30	1.0	30.0	26	1	26.0	65	3.0	21.7	73	3	24.3	32	2.0	16.0	28	1	28.0							
4	49	2.0	24.5	55	2	27.5	29	1.0	29.0	26	1	26.0	72	3.0	24.0	60	2	30.0	25	1.0	25.0	30	1	30.0							
5	56	3.0	18.7	52	2	26.0	27	1.0	27.0	26	1	26.0	49	2.0	24.5	75	3	25.0	35	2.0	17.5	32	1	32.0							
6	65	3.0	21.7	58	3	19.3	42	2.0	21.0	24	1	24.0	73	3.0	24.3	52	2	26.0	33	2.0	16.5	35	2	17.5							
Total	387	18.0	21.5	387	17	22.8	216	10.0	21.6	188	9	20.9	450	20.0	22.5	439	19	23.1	206	13.0	15.8	221	11	20.1							

Lemme Elementary							Van Allen Elementary						Shimek Elementary						Christine Grant Elementary												
SES	31.9%			ESSA				SES	24.9%			ESSA				SES	18.1%			ESSA				SES	15.6%			ESSA			
ELL				IA RC				ELL				IA RC				ELL				IA RC				ELL				IA RC			
SpEd							SpEd							SpEd							SpEd										
21-22 Actual FTE				22-23 WRAM Allocation			21-22 Actual FTE				22-23 WRAM Allocation		21-22 Actual FTE				22-23 WRAM Allocation		21-22 Actual FTE				22-23 WRAM Allocation								
WRAM 4			WRAM 5				WRAM 4			WRAM 5			WRAM 4			WRAM 5			WRAM 4			WRAM 5									
Students	Sections	Avg. Class Size	Students	Sections	Avg. Class Size	Students	Sections	Avg. Class Size	Students	Sections	Avg. Class Size	Students	Sections	Avg. Class Size	Students	Sections	Avg. Class Size	Students	Sections	Avg. Class Size	Students	Sections	Avg. Class Size	Students	Sections	Avg. Class Size					
KG	51	3.0	17.0	35	2	17.5	58	3.0	19.3	67	3	22.3	33	2.0	16.5	29	2	14.5	60	3.0	20.0	68	3	22.7							
1	52	2.0	26.0	51	2	25.5	60	3.0	20.0	54	2	27.0	27	2.0	13.5	32	2	16.0	71	3.0	23.7	62	3	20.7							
2	46	2.0	23.0	55	2	27.5	56	3.0	18.7	57	3	19.0	18	1.0	18.0	26	1	26.0	78	3.0	26.0	70	3	23.3							
3	59	2.0	29.5	51	2	25.5	51	2.0	25.5	66	3	22.0	36	2.0	18.0	20	1	20.0	74	3.0	24.7	78	3	26.0							
4	48	2.0	24.0	63	2	31.5	52	2.0	26.0	53	2	26.5	23	1.0	23.0	34	2	17.0	81	3.0	27.0	84	3	28.0							
5	66	3.0	22.0	55	2	27.5	57	2.0	28.5	56	2	28.0	26	1.0	26.0	24	1	24.0	85	3.0	28.3	87	3	29.0							
6	55	2.0	27.5	60	2	30.0	60	2.5	20.0	65	3	21.7	30	1.0	30.0	27	1	27.0	81	3.0	27.0	92	3	30.7							
Total	377	16.0	23.6	370	14	26.4	394	17.5	21.9	418	18	23.2	193	10.0	19.3	192	10	19.2	530	21.0	25.2	541	21	25.8							
Penn Elementary							Wickham Elementary						ICCS D PK-12 Online Learning Program																		
SES	12.7%			ESSA				SES	12.2%			ESSA				SES	33.5%			ESSA											
ELL				IA RC				ELL				IA RC				ELL				IA RC											
SpEd							SpEd							SpEd																	
21-22 Actual FTE				22-23 WRAM Allocation			21-22 Actual FTE				22-23 WRAM Allocation		21-22 Actual FTE				22-23 WRAM Allocation														
WRAM 4			WRAM 5				WRAM 4			WRAM 5			WRAM 5			WRAM 5															
Students	Sections	Avg. Class Size	Students	Sections	Avg. Class Size	Students	Sections	Avg. Class Size	Students	Sections	Avg. Class Size	Students	Sections	Avg. Class Size	Students	Sections	Avg. Class Size	Students	Sections	Avg. Class Size											
KG	76	3.5	19.0	68	3	22.7	40	2.0	20.0	56	3	18.7	35	2.0	17.5	5	1	5.0													
1	68	3.0	22.7	82	3	27.3	42	2.0	21.0	43	2	21.5	31	2.0	15.5	12	1	12.0													
2	68	3.0	22.7	67	3	22.3	45	2.0	22.5	46	2	23.0	47	2.0	23.5	12	1	12.0													
3	71	3.0	23.7	72	3	24.0	58	2.0	29.0	43	2	21.5	37	2.0	18.5	11	1	11.0													
4	72	3.0	24.0	76	3	25.3	42	2.0	21.0	60	2	30.0	54	2.0	27.0	6	1	6.0													
5	74	3.0	24.7	77	3	25.7	61	2.5	20.3	40	2	20.0	41	2.0	20.5	12	1	12.0													
6	68	3.0	22.7	76	3	25.3	59	2.0	29.5	62	2	31.0	42	2.0	21.0	11	1	11.0													
Total	497	21.5	22.6	518	21	24.7	347	14.5	23.1	350	15	23.3	287	14.0	20.5	69	7	9.9													