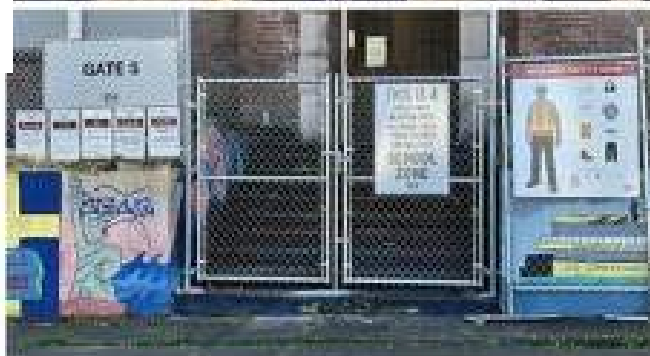


KIRKLAND MIDDLE SCHOOL- SAFETY PLAN

- 2020 National Winner of the AGC Safety Excellence Award
- 100% badging of personnel (background checks required)
- 100% Personal Protective Equipment (PPE)
- Site Specific Safety Plan for Each Company
- Full Height Safety Barriers, Screened Site Fences and Viewing Ports
- Dust and Noise Mitigation plans
- 100% Spotters and Flaggers for all Vehicles, Equipment and deliveries
- Mandatory Stretch and Flex and Safety meeting prior to start of work each day
- Daily site leadership meeting to review activities
- Mandatory job site orientation for review of all rules and protocols prior to starting any work
- Daily communication with School Leaders
- Multi-lingual safety signs
- Weekly Site wide Safety Trainings

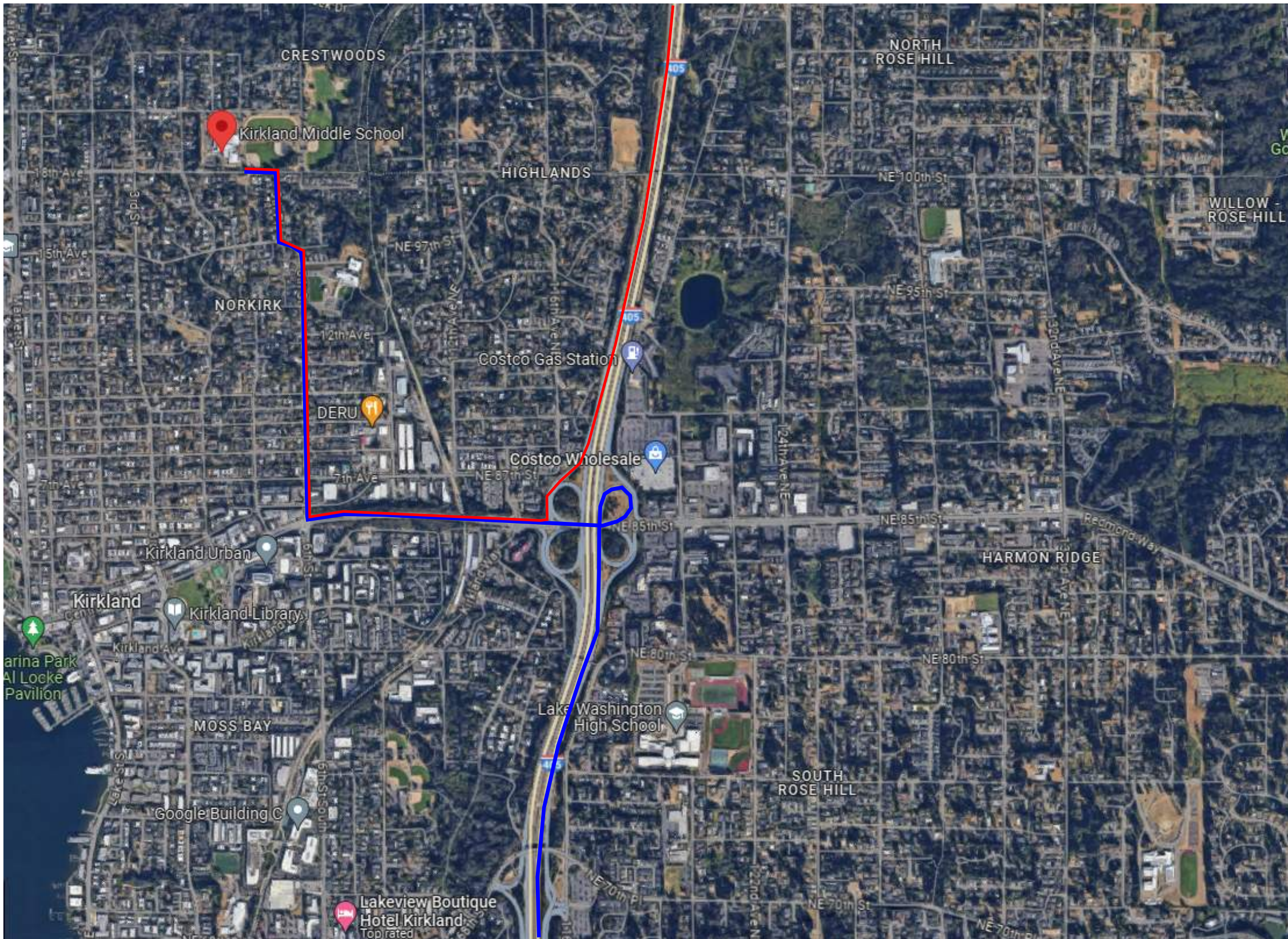


BNBuilders
2601 Fourth Avenue
Suite 350
Seattle, Washington 98121
206.382.3443

KIRKLAND MIDDLE SCHOOL- SAFETY PLAN

- 2020 National Winner of the AGC Safety Excellence Award
- 100% badging of personnel (background checks required)
- 100% Personal Protective Equipment (PPE)
- Site Specific Safety Plan for Each Company
- Full Height Safety Barriers, Screened Site Fences and Viewing Ports
- Dust and Noise Mitigation plans
- 100% Spotters and Flaggers for all Vehicles, Equipment and deliveries
- Mandatory Stretch and Flex and Safety meeting prior to start of work each day
- Daily site leadership meeting to review activities
- Mandatory job site orientation for review of all rules and protocols prior to starting any work
- Daily communication with School Leaders
- Multi-lingual safety signs
- Weekly Site wide Safety Trainings





Kirkland Middle School

430 18th Ave,
Kirkland, WA 98033

From 405 south

Follow I - 405N to NE 85th St
Take exit 18
Head westbound on 85th
Turn right onto 6th st
Continue onto 15th ave
Turn right onto 5th pl
Turn left on to 18th ave
Destination will be on the left

From 405 North

Follow I - 405s to NE 85th St
Take Exit 18
Head westbound on 85th
Turn right onto 6th st
Continue onto 15th ave
Turn right onto 5th pl
Turn left on to 18th ave
Destination will be on the left



BNBuilders

2601 Fourth Avenue
Suite 350
Seattle, Washington 98121
206.382.3443



TRUCK DELIVERY ROUTE

- Emergency/ Job Site Entrance
- Construction Site Fencing
- Pacific Mobile Construction Entrance
- BNB Construction Entrance

LEGEND

- PAC MOBILE HOG FUEL
- SECONDARY LAYDOWN
- NEW FIRE LANE/ CONSTRUCTION ENTRANCE
- EXIT OPEN DURING CONSTRUCTION
- AREA CLOSED & FENCED OFF WHEN DOING CANOPY WORK
- BNB JOBSITE TRAILER
- CONSTRUCTION AREA BATHROOMS
- Placeholder (Delete if unused)
- Placeholder (Delete if unused)