



January 11, 2024

Peartree+Belli Job #: 20035

Regarding:

**SHERWOOD ELEMENTARY SCHOOL
NEW BUS DROP-OFF, ACCESSIBLE RAMP AND RESTROOM MODERNIZATION
110 S. WOOD STREET, SALINAS, CA
SALINAS CITY ELEMENTARY SCHOOL DISTRICT
BID ADDENDUM #4R**

THIS ADDENDUM DOES NOT CHANGE THE SEALED PROPOSALS DUE DATE OF
JANUARY 16, 2024 BEFORE 2:00PM

Clarifications and changes:

1. Q: The plans and specifications are not clear on how to modify the existing structure to allow slope for positive drainage in the bathrooms as directed in addendum #1. Please provide cross sections showing how this is to be achieved, as well as, threshold transitions at door openings and transition details from concrete to wood as some of the subfloor in several of the restrooms have different conditions.

A: Floor drains are only required in the toilet room portions of restrooms. See floor drain diagram on P2.1 now provided in this Addendum. Existing restroom floor finishes to be demolished down to subfloor. Use Ardex or other approved topping material compatible with epoxy floor to create new slopes, maximum 2% in any direction. Threshold transitions and slopes to comply with detail 3/A1.3.
2. Q: Can you provide an idea of what might constitute excessive noise where the activities would be required to be performed after school hours?

A: Jack hammering, saw-cutting, use of saws, hammering, chipping, any other similar concussive and loud noises and vibrations.
3. Q: The bid form indicates three alternates and that the specifications will have information. Are there alternates associated with this project?

A: No.
4. Q: Besides the Encroachment Permit are there any other local agency, utility, or governmental permits that the contractor is responsible for?

A: Not that we are aware of.



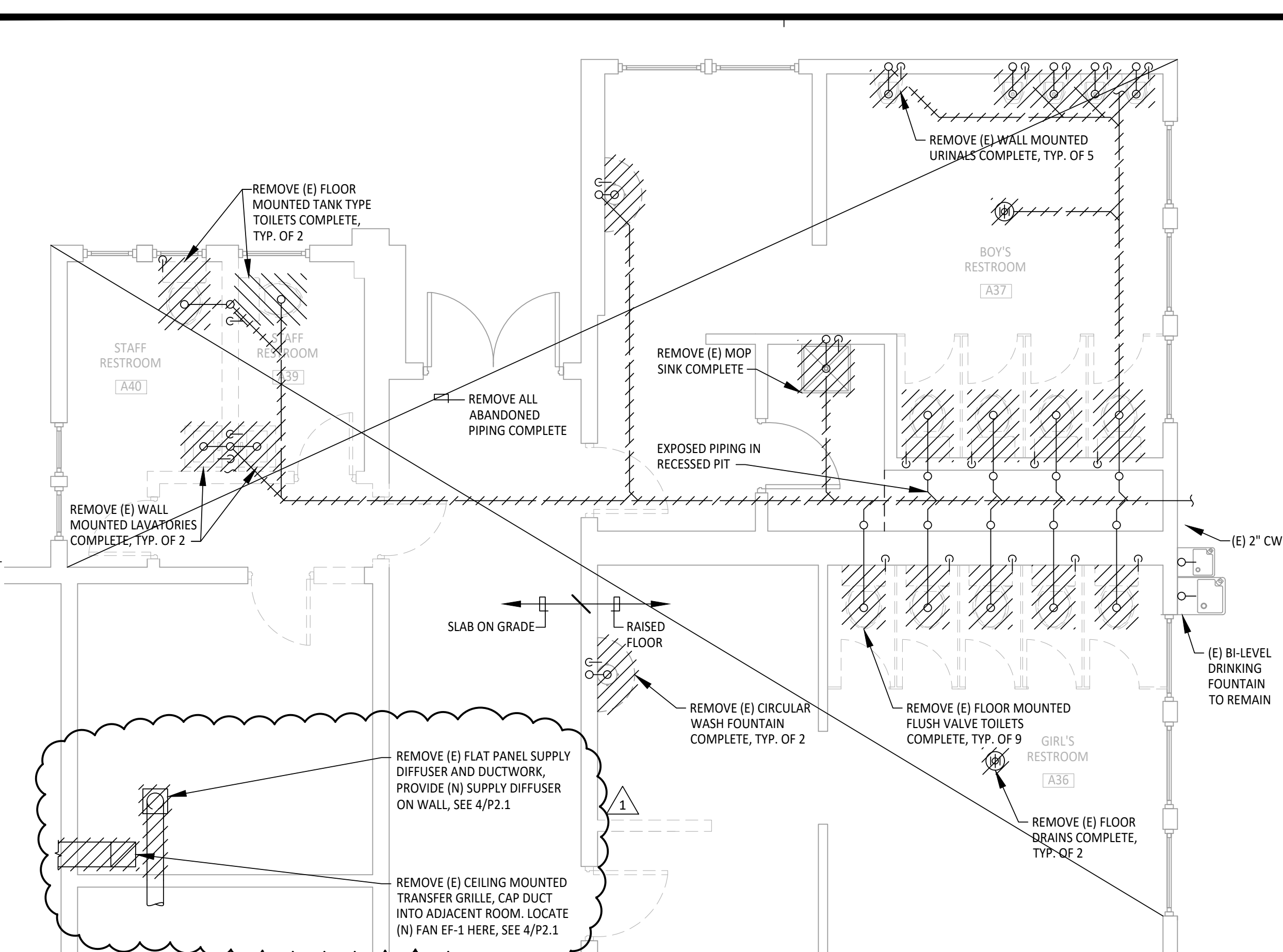
5. Q: Please provide the model numbers for the CFCI toilet accessories?
**A: Toilet accessories to be OFCI. District will provide toilet paper dispensers, seat cover dispensers and soap dispensers.
Contractor to provide and install recessed combo accessory units in all ADA stalls and single-occupancy Staff Restrooms. Design based on Bobrick B-3091 and B-3092. Cut sheets provided in this Addendum.**

6. Q: Are the exterior handrails at the ramp and stairs to be both galvanized or power coated? If power coated, please provide a color.
A: Galvanized, primed and painted. Standard color to be selected by Architect.

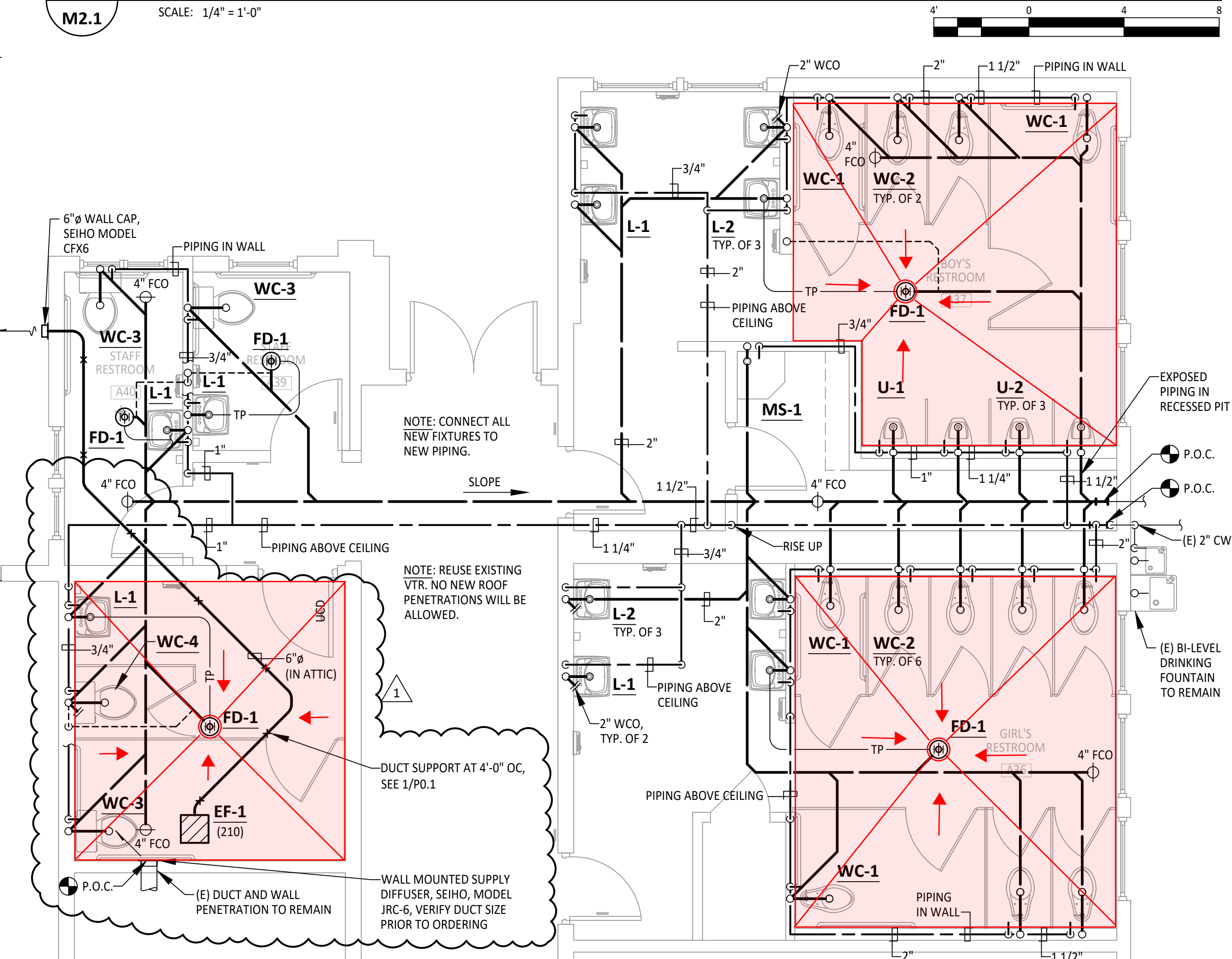
7. Q: Please confirm that there are no allowances to be included in the bid? None were noted in the documents.
A: None.

8. Q: Subcontractor Prequalification Question: As a hypothetical prequalification situation; if a subcontractor has a C-27 Landscaping license and a C-10 Electrical license and only bids the landscaping scope of work is this subcontractor required to be prequalified? See Notice Inviting Bids Page 2; Prequalification for Bidders for reference.
A: Yes, subcontractor still has to be prequalified if they contain any of the licenses listed in the Notice Inviting Bids.

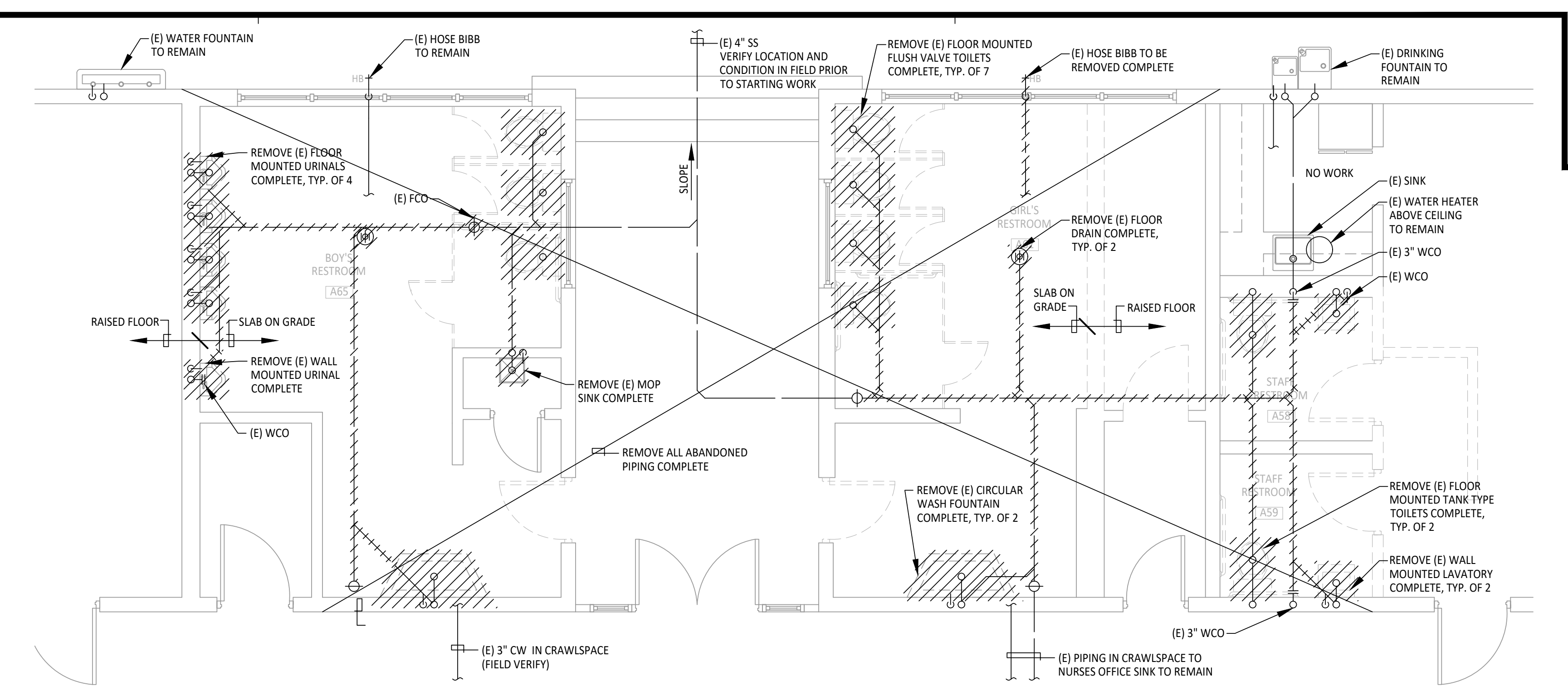
End of Addendum



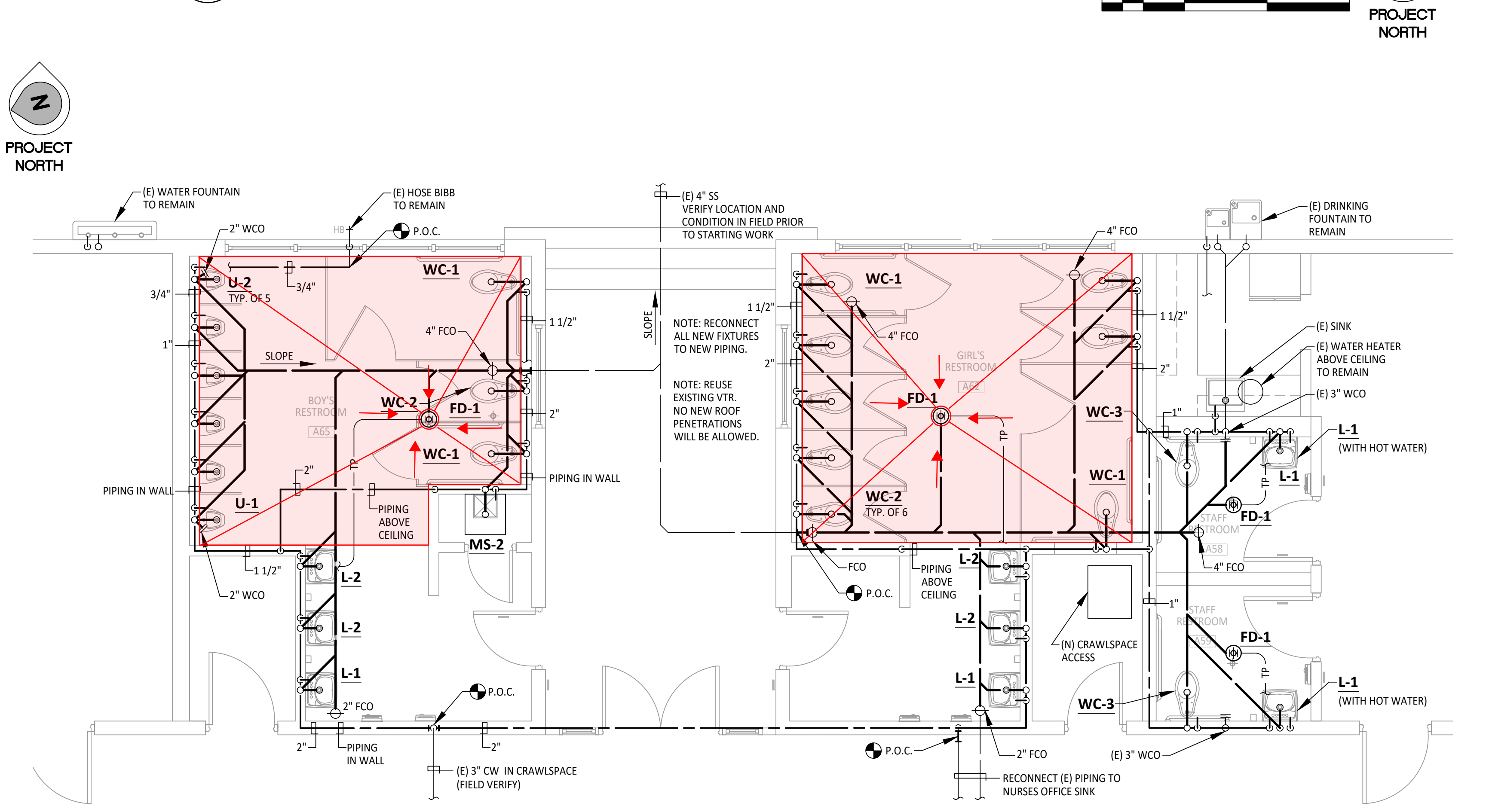
3
M2.1 STAFF RR 3 AND 4, BOYS RR 2, AND GIRLS RR 2 - PLUMBING AND MECHANICAL DEMOLITION
 SCALE: 1/4" = 1'-0"



4
M2.1 STAFF RR 3 AND 4, BOYS RR 2, AND GIRLS RR 2 - PLUMBING AND MECHANICAL NEW
 SCALE: 1/4" = 1'-0"



1
M2.1 BOYS RR 1, GIRLS RR 1 AND STAFF RR 1 AND 2 - PLUMBING DEMOLITION
 SCALE: 1/4" = 1'-0"



2
M2.1 BOYS RR 1, GIRLS RR 1 AND STAFF RR 1 AND 2 - PLUMBING NEW
 SCALE: 1/4" = 1'-0"

REVISIONS DATE	BY	DESCRIPTION
01/26/22	CC	1st DSA SUBMITAL
11/07/22	CC	1st PLAN CHECK SUBMITAL
11/07/23	CC	

BELLI ARCHITECTURAL GROUP 881 - 424 - 4820
 235 MONTEREY STREET, SUITE B, SALINAS, CA 93901
 BELLIAG.COM



ENLARGED RESTROOM PLANS - PLUMBING DEMOLITION AND NEW
 NEW BUS DROP-OFF AND PARKING FOR:
SHERWOOD ELEM. SCHOOL
 110 SOUTH WOOD STREET
 SALINAS, CA 93905

DATE	01/26/2022
SCALE	1/4" = 1'-0"
DRAWN	CADD
JOB	20035
SHEET	P2.1
OF	SHEETS



ph: (831) 649-8000
 fx: (831) 649-8038
 www.axiomengineers.com
AXIOM ENGINEERS
 CONSULTING ENGINEERS
 22 Lower Ragsdale Dr., Suite A
 Monterey, California 93940-5788
 AE Project #: 20220439.11

MATERIALS:

Cabinet — 18-8, Type-304, heavy-gauge stainless steel. All-welded construction. Exposed surfaces have satin finish or matte black, as specified.

Flange — 18-8, Type-304, 22-gauge (0.8mm) stainless steel with satin finish or matte black, as specified. Drawn and beveled, one-piece, seamless construction.

Doors (2) — 18-8, Type-304, 18-gauge (1.2mm) stainless steel with satin finish or matte black, as specified. One-piece, seamless construction. Secured to cabinet with a full-length stainless steel piano-hinge. Equipped with a tumbler lock keyed like other Bobrick washroom accessories.

Toilet Tissue Dispensers (2) — 18-8, Type-304, 22-gauge (0.8mm) stainless steel with satin finish or matte black, as specified. Equipped with two chrome-plated plastic spindles, each with a heavy-duty internal spring.

Disposal Panel — 18-8, Type-304, 22-gauge (0.8mm) stainless steel with hemmed edges; exposed surface has satin finish or matte black, as specified. Panel equipped with graphic symbol for waste "drop here". Secured to door with a spring-loaded, full-length stainless steel piano-hinge.

Waste Receptacle — 18-8, Type-304, heavy-gauge stainless steel. All-welded construction. Removable for servicing. Capacity: 0.4-gal. (1.5-L).

OPERATION:

Doors unlock with key provided and swing open for servicing. Toilet seat-cover dispenser holds 500 single- or half-fold paper covers. Receptacle is removable for servicing. Unit holds two standard-core toilet tissue rolls up to 5-1/4" (135mm) diameter (1800 sheets).

Designer's Note: It is recommended that one full toilet tissue roll remain wrapped until the other roll has been depleted to avoid wasting ends of both rolls.

INSTALLATION:

Provide framed rough wall opening 26-5/8" (675mm) wide, 12-5/8 (320mm) high. Minimum recessed depth required from finish face of wall is 4" (102mm). Allow clearance for construction features that may protrude into rough wall opening from opposite wall. Coordinate with mechanical engineer to avoid pipes, vents, and conduits in wall. If unit projects above top of wainscot, provide aluminum channel or other filler to eliminate gap between flange and finish face of wall. Mount unit in wall opening with shims between framing and cabinet at all points indicated by an S, then secure unit with #8 x 1-1/4" (4.2 x 30mm) sheet-metal screws (not furnished).

Designer's Notes:

1. Recessed B-3091 mounts flush in left side wall in accessible toilet compartment, with toilet seat cover dispenser on right side of unit (when seated on toilet).
2. For unit to mount on the right side of toilet (when seated on toilet) see model B-3092.
3. For visual placement of models inside toilet compartment, refer to Technical Bulletin TB-92.

SPECIFICATION:

Recessed toilet seat-cover dispenser, waste disposal, and toilet tissue dispenser shall be Type-304 stainless steel with all-welded construction; exposed surfaces shall have satin finish or matte black, as specified. Toilet tissue dispensers shall be ABS plastic. Flange shall be drawn and beveled, one-piece, seamless construction. Doors shall be one-piece, seamless construction; secured to cabinet with a full-length stainless steel piano-hinge; and equipped with a tumbler lock keyed like other Bobrick washroom accessories. Toilet seat-cover dispenser holds 500 paper covers. Self-closing disposal panel shall be secured to door with a spring-loaded, full-length stainless steel piano-hinge and hemmed edges. Disposal panel equipped with graphic symbol, "drop here". Disposal shall be furnished with a removable receptacle, 18-8, Type-304, heavy-gauge stainless steel. All-welded construction with a capacity of 0.4-gal. (1.5-L). Unit shall be equipped with two chrome-plated plastic spindles, each with a heavy-duty internal spring, that hold standard-core rolls up to 5-1/4" (135mm) diameter (1800 sheets).

Recessed Toilet Seat-Cover Dispenser, Waste Disposal, and Toilet Tissue Dispenser shall be Model B-3091 of Bobrick Washroom Equipment, Inc., Clifton Park, New York; Jackson, Tennessee; Los Angeles, California; Bobrick Washroom Equipment Company, Scarborough, Ontario; Bobrick Washroom Equipment Pty. Ltd., Australia; and Bobrick Washroom Equipment Limited, United Kingdom.



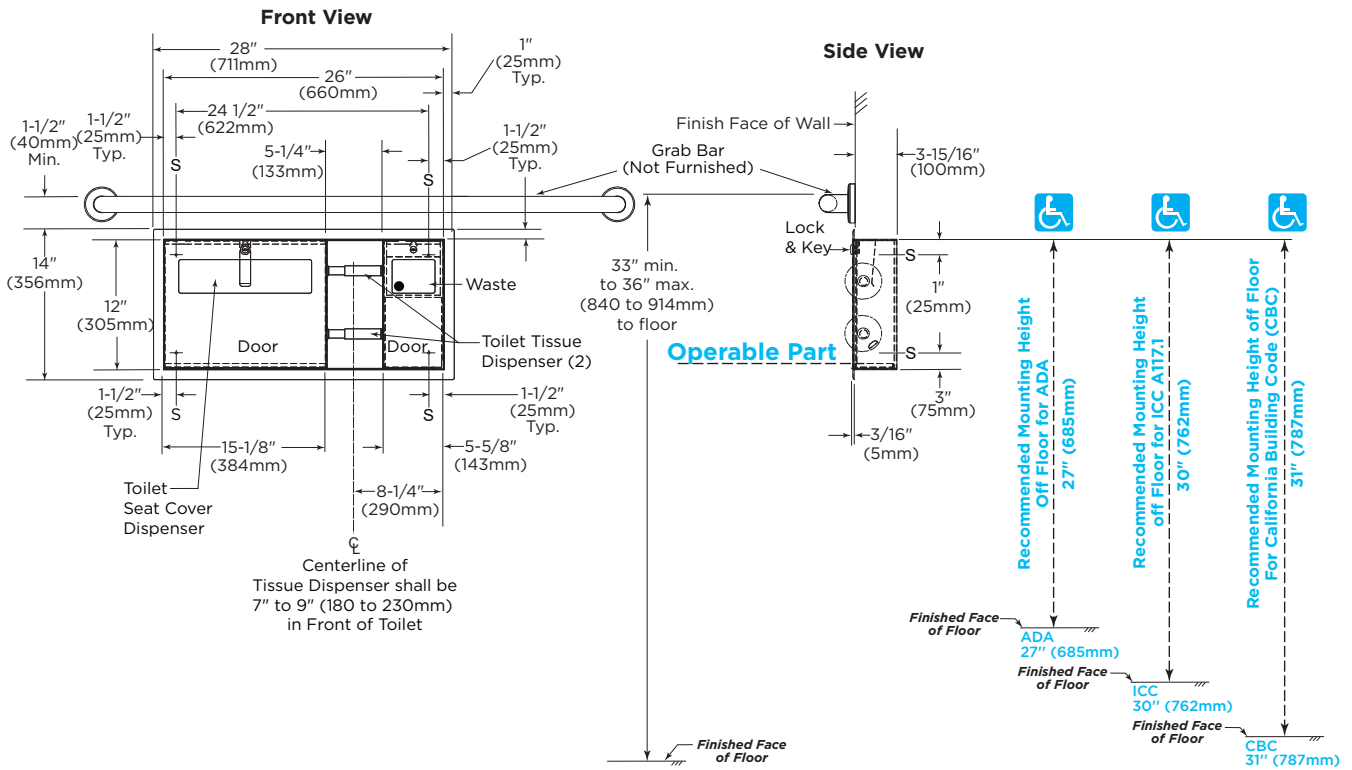
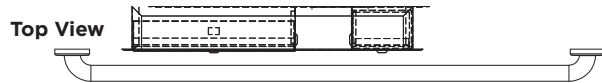
Technical Data

ClassicSeries® RECESSED TOILET SEAT-COVER DISPENSER, WASTE DISPOSAL, AND TOILET TISSUE DISPENSER

B-3092

Specify Finish Required

- Stainless Steel, Satin Finish
- Matte Black Finish, please use model no. 3092.MBLK



Rough Wall Opening
 26-5/8" (675mm) wide
 12-5/8" (320mm) high
 4" (102mm) minimum recessed depth

ADA/ICC/CBC Installation Guidance

***Operable Part:** Bottom of outlet of toilet tissue dispenser

Minimum mounting height of Operable Part:
 ADA: 15" (380mm) above finished floor (AFF)
 ICC: 18" (457mm) above finished floor (AFF)
 CBC: 19" (482mm) above finished floor (AFF)

*For more information regarding operable parts, please refer to Bobrick Planning Guide for Accessible Restrooms, page 9.

continued . . .

MATERIALS:

Cabinet — 18-8, Type-304, heavy-gauge stainless steel. Welded construction. Exposed surfaces have satin finish or matte black, as specified.

Flange — 18-8, Type-304, 22-gauge (0.8mm) stainless steel with satin finish or matte black, as specified. Drawn and beveled, one-piece, seamless construction.

Doors (2) — 18-8, Type-304, 18-gauge (1.2mm) stainless steel with satin finish or matte black, as specified. One-piece, seamless construction. Secured to cabinet with a full-length stainless steel piano-hinge. Equipped with a tumbler lock keyed like other Bobrick washroom accessories.

Toilet Tissue Dispensers (2) — 18-8, Type-304, 22-gauge (0.8mm) stainless steel with satin finish or matte black, as specified. Equipped with two chrome-plated plastic spindles, each with a heavy-duty internal spring.

Disposal Panel — 18-8, Type-304, 22-gauge (0.8mm) stainless steel with hemmed edges; exposed surface has satin finish or matte black, as specified. Panel equipped with graphic symbol for waste "drop here". Secured to door with a spring-loaded, full-length stainless steel piano-hinge.

Waste Receptacle — 18-8, Type-304, heavy-gauge stainless steel. All-welded construction. Removable for servicing. Capacity: 0.4-gal. (1.5-L).

OPERATION:

Doors unlock with key provided and swing open for servicing. Toilet seat-cover dispenser holds 500 single- or half-fold paper covers. Receptacle is removable for servicing. Unit holds two standard-core toilet tissue rolls up to 5-1/4" (135mm) diameter (1800 sheets).

Designer's Note: It is recommended that one full toilet tissue roll remain wrapped until the other roll has been depleted to avoid wasting ends of both rolls.

INSTALLATION:

Provide framed rough wall opening 26-5/8" (675mm) wide, 12-5/8" (320mm) high. Minimum recessed depth required from finish face of wall is 4" (102mm). Allow clearance for construction features that may protrude into rough wall opening from opposite wall. Coordinate with mechanical engineer to avoid pipes, vents, and conduits in wall. If unit projects above top of wainscot, provide aluminum channel or other filler to eliminate gap between flange and finish face of wall. Mount unit in wall opening with shims between framing and cabinet, then secure unit with #8 x 1-1/4" (4.2 x 30mm) sheet-metal screws (not furnished).

Designer's Notes:

1. Recessed B-3092 mounts flush in right side wall in accessible toilet compartment, with toilet seat cover dispenser on left side of unit (when seated on toilet).
2. For unit to mount on the left side of toilet (when seated on toilet) see model B-3091.
3. For visual placement of models inside toilet compartment, refer to Technical Bulletin TB-92.

SPECIFICATION:

Recessed toilet seat-cover dispenser, waste disposal, and toilet tissue dispenser shall be Type-304 stainless steel with all-welded construction; exposed surfaces shall have satin finish or matte black, as specified. Toilet tissue dispensers shall be ABS plastic. Flange shall be drawn and beveled, one-piece, seamless construction. Doors shall be one-piece, seamless construction; secured to cabinet with a full-length stainless steel piano-hinge; and equipped with a tumbler lock keyed like other Bobrick washroom accessories. Toilet seat-cover dispenser holds 500 paper covers. Self-closing disposal panel shall be secured to door with a spring-loaded, full-length stainless steel piano-hinge, has hemmed edges. Disposal panel equipped with graphic symbol, "drop here". Disposal shall be furnished with a removable receptacle, 18-8, Type-304, heavy-gauge stainless-steel. All-welded construction with a capacity of 0.4-gal. (1.5-L). Unit shall be equipped with two chrome-plated plastic spindles, each with a heavy-duty internal spring, that hold standard-core rolls up to 5-1/4" (135mm) diameter (1800 sheets).

Recessed Seat-Cover Dispenser, Waste Disposal, and Toilet Tissue Dispenser shall be Model B-3092 of Bobrick Washroom Equipment, Inc., Clifton Park, New York; Jackson, Tennessee; Los Angeles, California; Bobrick Washroom Equipment Company, Scarborough, Ontario; Bobrick Washroom Equipment Pty. Ltd., Australia; and Bobrick Washroom Equipment Limited, United Kingdom.