



American
Cooperative School
of Tunis
SINCE 1959

AMERICAN COOPERATIVE SCHOOL OF TUNIS

FINAL REPORT

AUGUST 2023

smithsinnett
ARCHITECTURE

EXECUTIVE SUMMARY

The design of the actual building began in earnest once the program was approved. As the classrooms were developed, so too was the circulation, horizontal and vertical. Two new stair towers were placed at the ends of the classroom wings with a third monumental stair at the connecting “bridge” between the two wings.

The first floor of the secondary school, as are the other floors, is composed of an east and west wing. The east wing houses large public spaces; cafeteria multipurpose room, main gym, and aquatic center. The west wing contains the administration, elementary learning center, and science. The central monumental stair leads to the first level of the two-story secondary learning commons. The monumental stair is envisioned as being an important activating feature of the central learning commons; a dynamic, interactive, and social version of the traditional library. Nearby to the learning commons in the second-floor west wing are the stem-related classrooms, drawing on the collaborative nature of the SLC. The east wing of the second floor includes the Language classrooms, Counselor Offices and the Fitness Room which overlooks the Gymnasium and Aquatic Center.

The third-floor welcomes students with an overlook to the second floor along with various seating areas and outdoor roof terraces. The east wing houses History, with English and Math in the west wing.

While plans were being developed, ARK’s research provided the technical parameters for consideration in the design. Zoning regulation requires that the third floor of a property which abuts a neighboring buildable lot be designed not to obstruct daylight from reaching the site. Effectively, the third floor of the west wing was restricted by an additional 3-meter setback. This was incorporated into the design with the addition of a balcony. As ARK continued to develop the design of the systems, a basement was added as an extension to the A-Block Safe Haven to house mechanical and electrical equipment, stormwater, and pool equipment.

A virtual plan review meeting was held with a small leadership and staff group on March 9th. A follow-up survey was posted which captured widely positive responses. The remainder of March and April were focused on developing the exterior and interiors of the facility. Two schemes were generated initially and developed in tandem to give ACST Leadership options to compare. The resulting scheme combines what the school felt to be the most successful aspects of the two. The aesthetic is decidedly modern, in keeping with the general language and materiality of the A-block. However, key material choices reference the ethnicity of Tunisia, i.e., the central courtyard is shaded by a canopy perforated with a traditional pattern that evokes the crafts of the region.

Renderings and fly-around videos were presented iteratively during design and the final presentation version was delivered to the board on May 9th. The schematic design package was unanimously approved.

This complex project required a detailed evaluation of current classroom scheduling and the capacity trade-off at each phase that weighs pre-demo against post-completion capacity. This was accomplished to assist the owner in preparing for temporary facilities, operations, and infrastructure throughout the duration of construction on an occupied campus. Several options were explored, but ultimately came down to a two phase, three prong approach. Important reasons for this include less construction activity due to a shortened time frame and a more economically affordable solution. A description of the relocation and phasing can be found in the phasing summary of this report.

Finally, following this report, you will find several Appendix sections included to illuminate all the valuable research done throughout the design phase, as well as previous phase documentation.

The schematic design establishes the overall scope and parameters for future campus development and will reinforce ACST's long-term vision for its' core educational concepts and community aspirations well into the future.

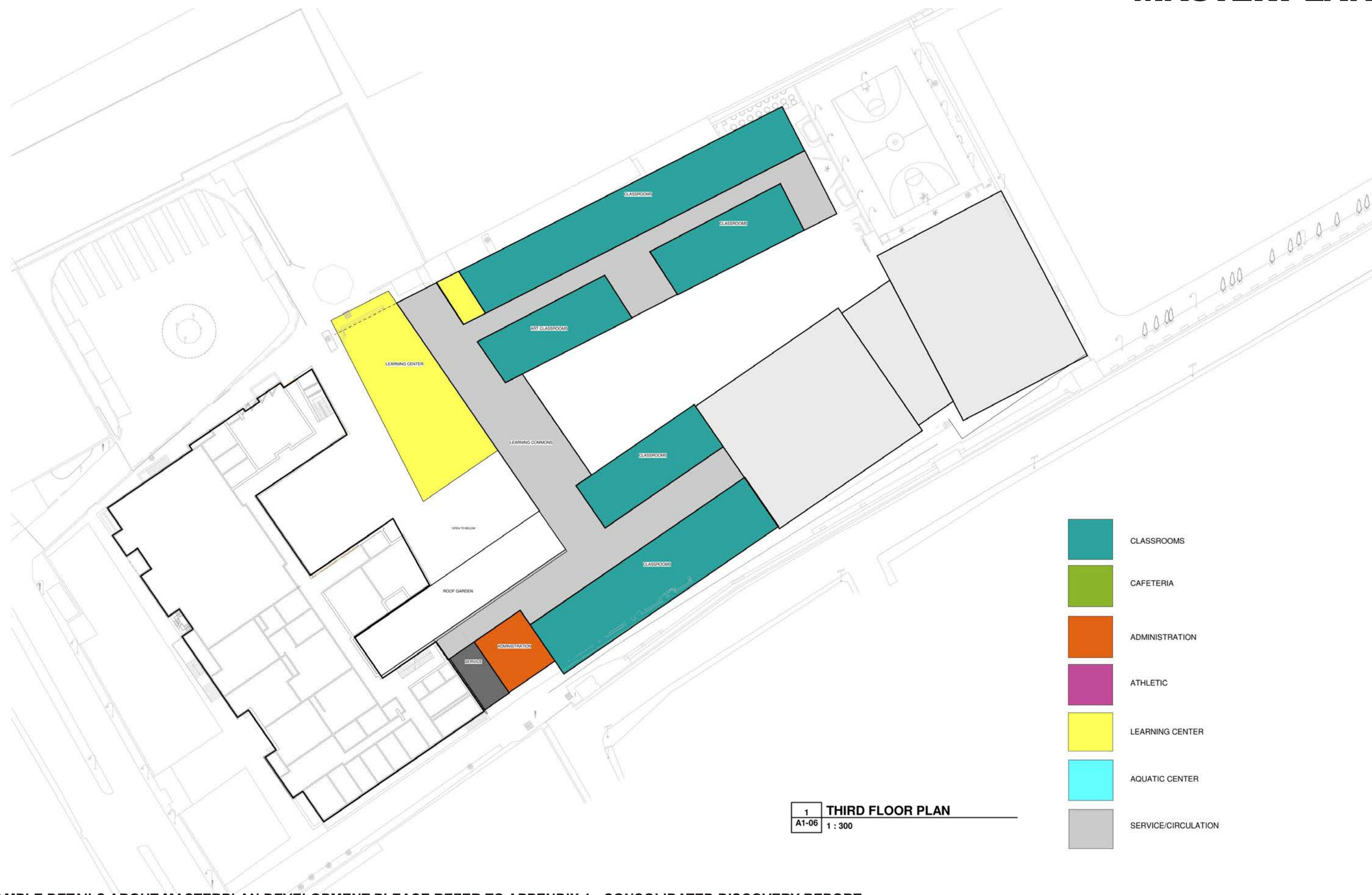
MASTERPLAN



MASTERPLAN



MASTERPLAN



SECONDARY LEARNING CENTER - SHADED COURTYARD



SHADED COURTYRAD



SECONDARY LEARNING CENTER



RENDERINGS



TERRACE THIRD FLOOR - EXTERIOR LEARNING SPACE



MAIN COURTYRAD



RENDERINGS

AQUATIC CENTER / BASKETBALL COURT



SITE OVERVIEW



MAIN LOBBY / CAFETERIA



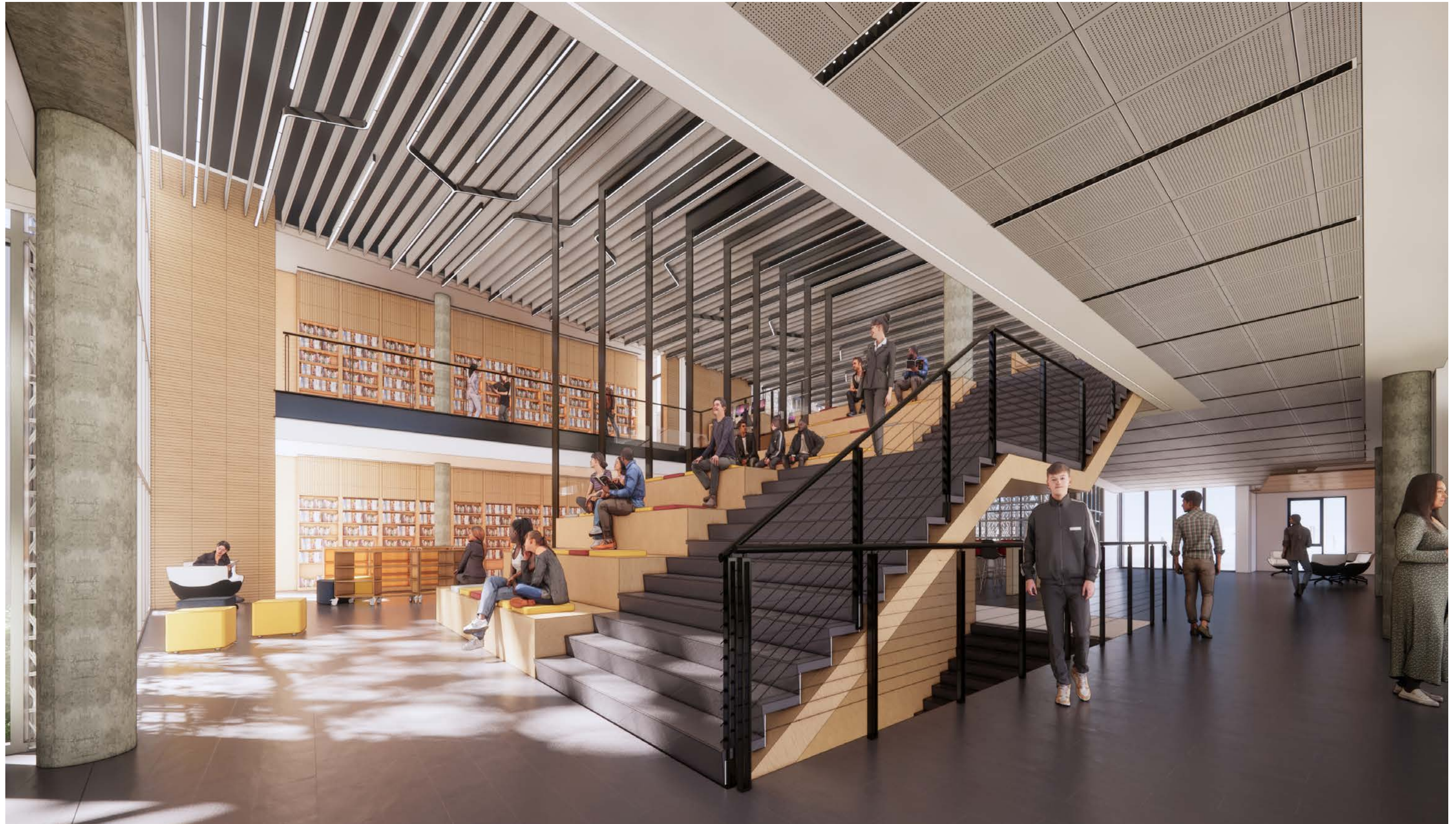
MAIN LOBBY / CAFETERIA



CAFETERIA

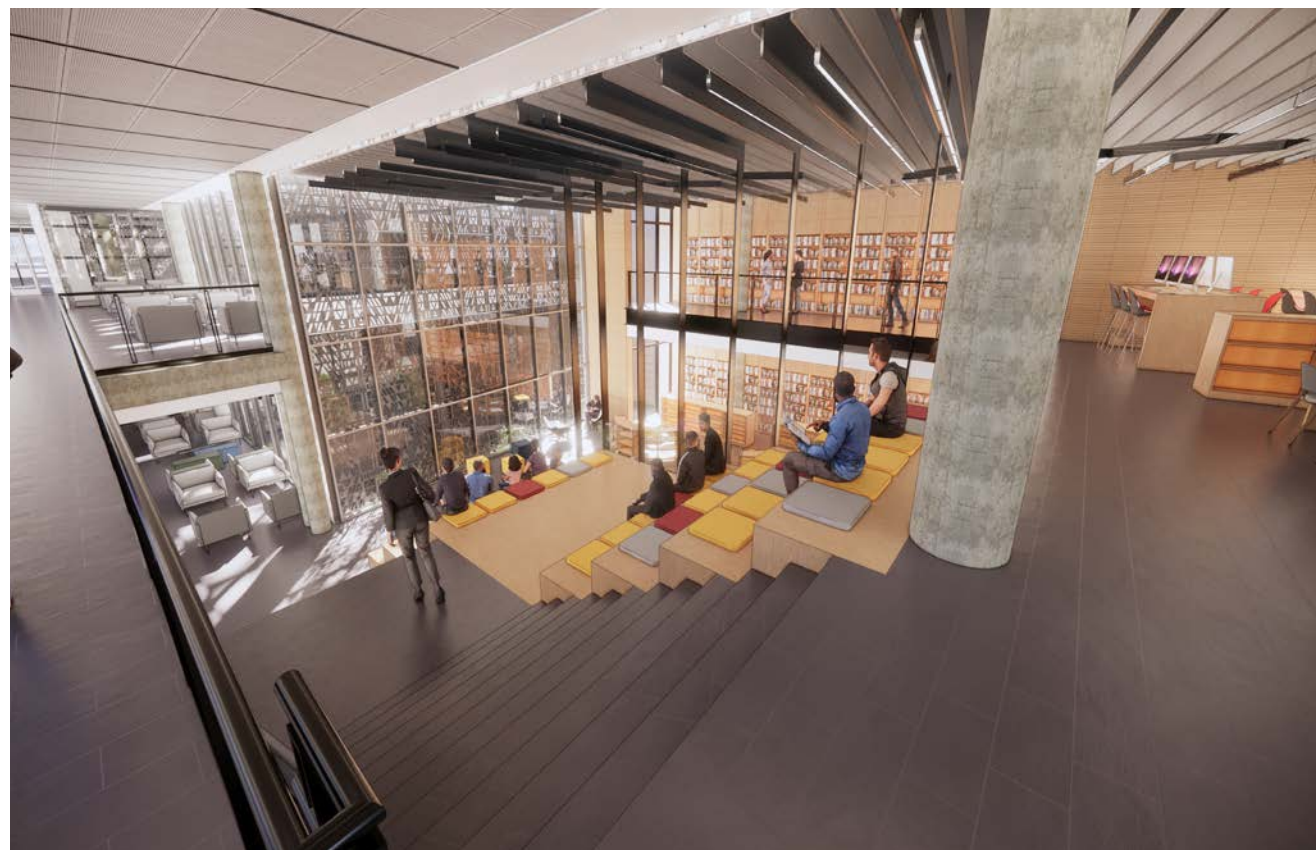


SECONDARY LEARNING CENTER



RENDERINGS

SECONDARY LEARNING CENTER



SECONDARY LEARNING CENTER



LEARNING COMMONS



MAKER SPACE



CLASSROOM



RENDERINGS

GYMNASIUM



ELEVATED RUNNING TRACK



MULTIPURPOSE ROOM



AQUATIC CENTER



- ADMINISTRATION
- SAFE HAVEN
- RESTROOMS
- TECHNICAL ROOMS
- CIRCUALTION AND COMMONS
- EXISTING



BASEMENT FLOOR PLAN

SCALE 0 5m 10m 15m 20m

- ADMINISTRATION
- PRIMARY LEARNING CENTER
- CAFETERIA
- SUPPORT AND BREAKOUT SPACES
- CLASSROOMS
- ATHLETIC
- RESTROOMS
- CIRCULATION AND COMMONS
- TECHNICAL ROOMS
- EXISTING



FIRST FLOOR PLAN



- ADMINISTRATION
- SECONDARY LEARNING CENTER
- SUPPORT AND BREAKOUT SPACES
- CLASSROOMS
- ATHLETIC
- RESTROOMS
- CIRCULATION AND COMMONS
- TECHNICAL ROOMS
- EXTERIOR LEARNING SPACES
- EXISTING



SECOND FLOOR PLAN

SCALE 0 5m 10m 15m 20m



- ADMINISTRATION
- SECONDARY LEARNING CENTER
- SUPPORT AND BREAKOUT SPACES
- CLASSROOMS
- RESTROOMS
- CIRCULATION AND COMMONS
- TECHNICAL ROOMS
- EXTERIOR LEARNING SPACES
- EXISTING

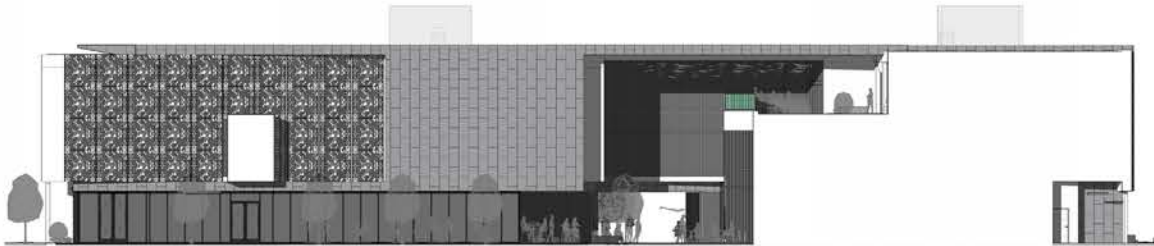


THIRD FLOOR PLAN

SCALE 0 5m 10m 15m 20m



ELEVATIONS



BUILDING ELEVATION - NORTH



BUILDING ELEVATION - ATHLETIC WING FACADE ON COURTYARD



BUILDING ELEVATION - NORTH WING FACADE ON COURTYARD



BUILDING ELEVATION - NORD



BUILDING ELEVATION - EST



BUILDING ELEVATION - WEST